



Fall & Associates

Stake and Elevation Service

719 W. 5th Street

P.O. Box 404

Concordia, KS. 66901

1-800-536-2821

Date 8-30-13

Invoice Number 0827131

MURFIN DRILLING

1-6

Shaw-Albers Unit

Operator

Number

Farm Name

Sheridan-KS

6

6s

29w

1275'FSL 2185'FEL

County-State

S

T

R

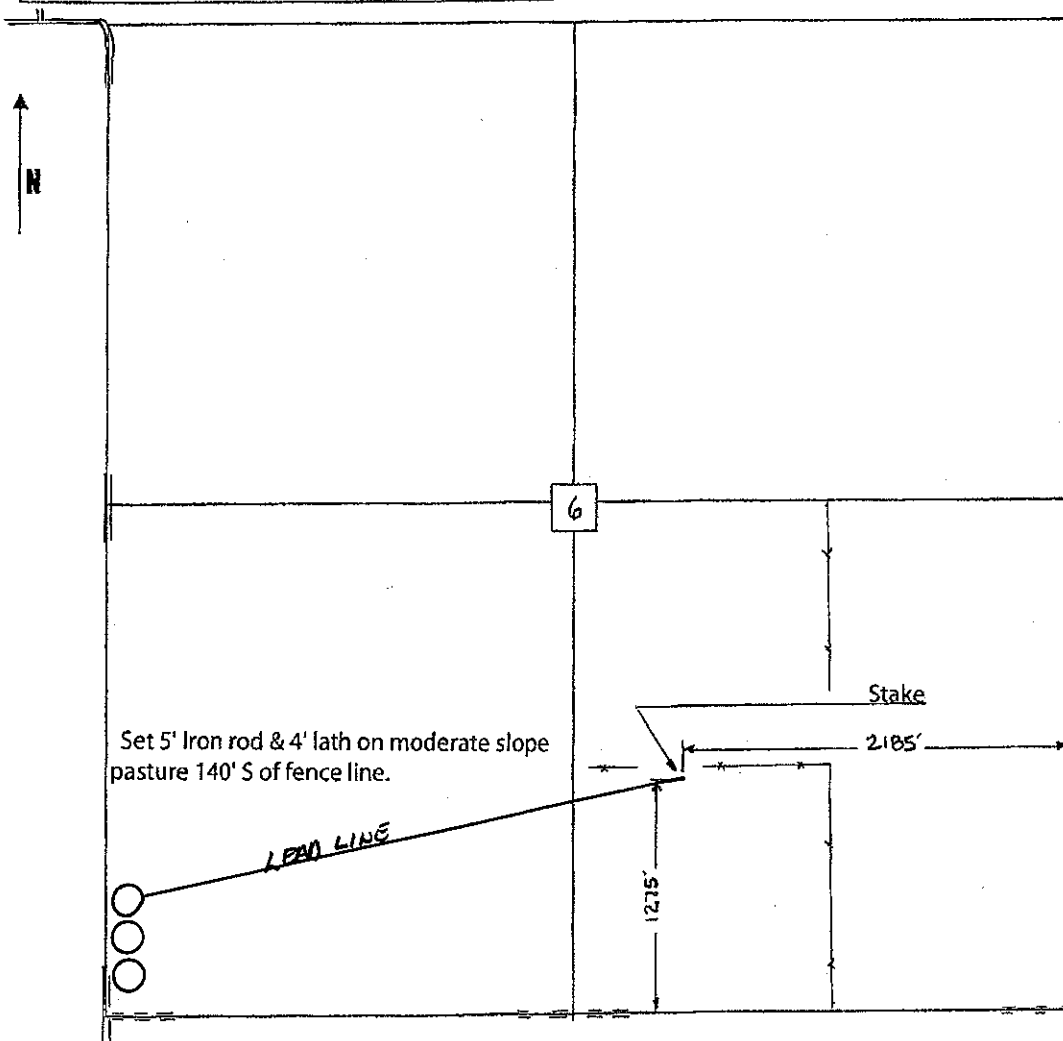
Location

Murfin Drilling
250 N. Water
Suite 300
Wichita, KS. 67202

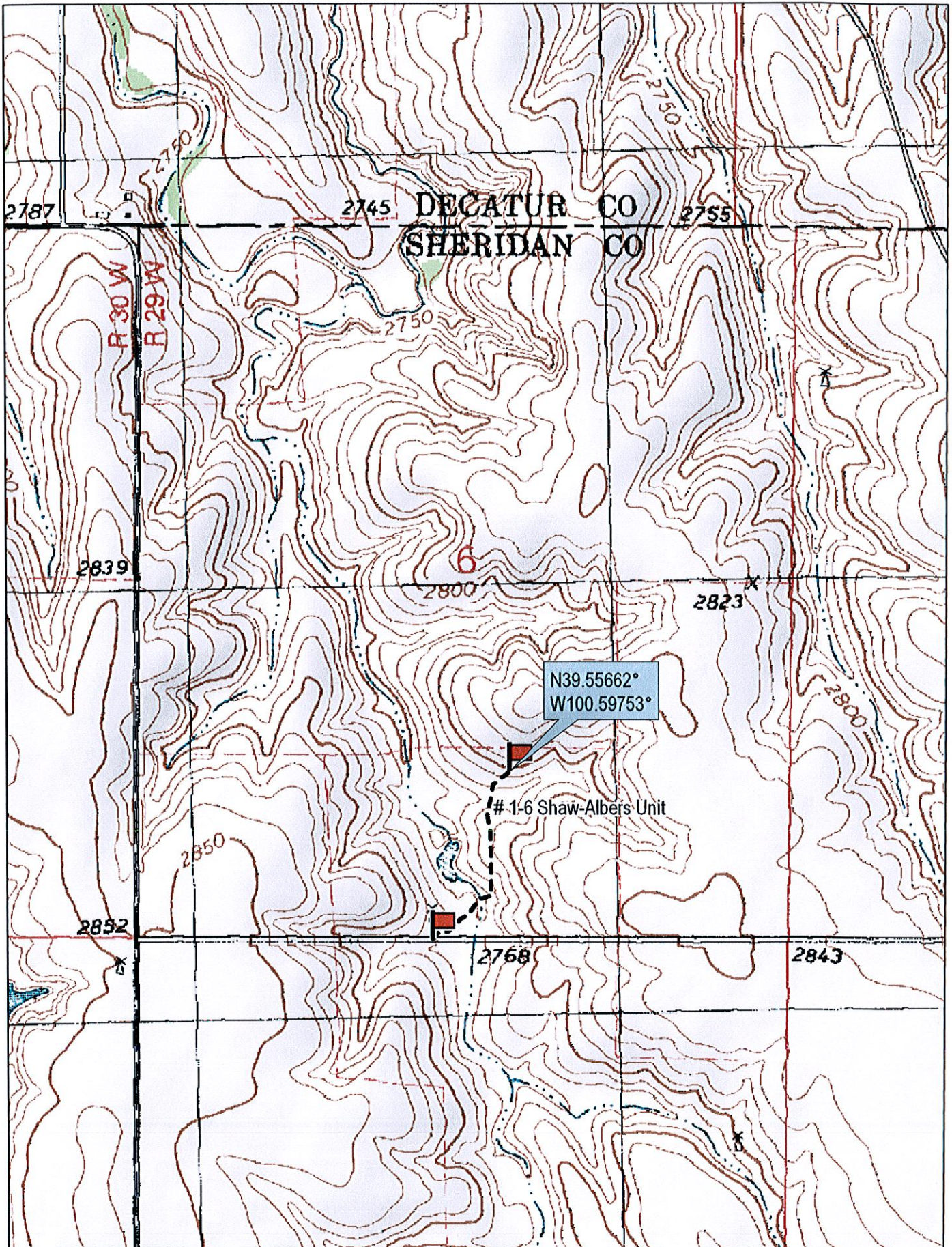
Elevation 2796 Gr.

Ordered By: Shauna

Scale 1"=1000'



Set 5' Iron rod & 4' lath on moderate slope pasture 140' S of fence line.



N39.55662°
W100.59753°

1-6 Shaw-Albers Unit



© 2002 DeLorme. 3-D TopoQuads®. Data copyright of content owner.
www.delorme.com

Scale 1 : 12,000
1" = 1000 ft

