



**TRILOBITE TESTING, INC.**

# DRILL STEM TEST REPORT

Shakespeare Oil Co, Inc

**16-14s-32w**

202 W Main St  
Salem, IL 62881

**Ottley #4-16**

ATTN: Tim Priest

Job Ticket: 53031

**DST#: 3**

Test Start: 2013.07.30 @ 23:57:00

## GENERAL INFORMATION:

Formation: **Lansing "J"**

Deviated: No Whipstock: ft (KB)

Time Tool Opened: 02:47:30

Time Test Ended: 08:28:45

Test Type: Conventional Bottom Hole (Reset)

Tester: Cornelio Landa III

Unit No: 58

**Interval: 4031.00 ft (KB) To 4065.00 ft (KB) (TVD)**

Reference Elevations: 2818.00 ft (KB)

Total Depth: 4065.00 ft (KB) (TVD)

2808.00 ft (CF)

Hole Diameter: 7.88 inches Hole Condition: Fair

KB to GR/CF: 10.00 ft

**Serial #: 8355 Outside**

Press @ RunDepth: 123.26 psig @ 4036.00 ft (KB)

Capacity: 8000.00 psig

Start Date: 2013.07.30

End Date:

2013.07.31

Last Calib.:

2013.07.31

Start Time:

23:57:05

End Time:

08:28:44

Time On Btm:

2013.07.31 @ 02:47:15

Time Off Btm:

2013.07.31 @ 06:19:15

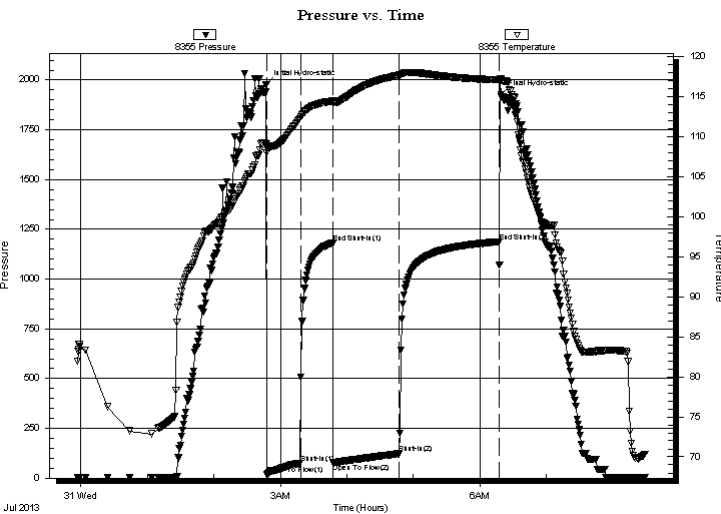
## TEST COMMENT:

IF: 6 in. of Blow

IS: Bled off in 2 mins.-Surface blow after 5 mins. open-Died in 10 mins.

FF: 8 1/2 in. of Blow

FS: Bled off in 3 mins-Surface blow after 4 1/2 mins. open-died in 12 mins.



## PRESSURE SUMMARY

Time (Min.)	Pressure (psig)	Temp (deg F)	Annotation
0	1976.73	109.07	Initial Hydro-static
1	18.77	108.00	Open To Flow (1)
31	74.90	112.33	Shut-In(1)
61	1179.76	114.44	End Shut-In(1)
61	76.88	114.25	Open To Flow (2)
120	123.26	117.67	Shut-In(2)
211	1187.86	117.08	End Shut-In(2)
212	1927.75	117.02	Final Hydro-static

## Recovery

Length (ft)	Description	Volume (bbl)
240.00	Mw 35m 65w	2.28

\* Recovery from multiple tests

## Gas Rates

Choke (inches)	Pressure (psig)	Gas Rate (Mcf/d)



**TRILOBITE  
TESTING, INC.**

# DRILL STEM TEST REPORT

## FLUID SUMMARY

Shakespeare Oil Co, Inc

**16-14s-32w**

202 W Main St  
Salem, IL 62881

**Ottley #4-16**

Job Ticket: 53031

**DST#: 3**

ATTN: Tim Priest

Test Start: 2013.07.30 @ 23:57:00

### Mud and Cushion Information

Mud Type: Gel Chem

Cushion Type:

Oil API:

deg API

Mud Weight: 9.00 lb/gal

Cushion Length:

ft

Water Salinity:

26000 ppm

Viscosity: 49.00 sec/qt

Cushion Volume:

bbbl

Water Loss: 9.59 in<sup>3</sup>

Gas Cushion Type:

Resistivity: ohm.m

Gas Cushion Pressure:

psig

Salinity: 3300.00 ppm

Filter Cake: 1.00 inches

### Recovery Information

Recovery Table

Length ft	Description	Volume bbl
240.00	Mw 35m 65w	2.283

Total Length: 240.00 ft      Total Volume: 2.283 bbl

Num Fluid Samples: 0

Num Gas Bombs: 0

Serial #:

Laboratory Name:

Laboratory Location:

Recovery Comments: RW - .116@70 degrees

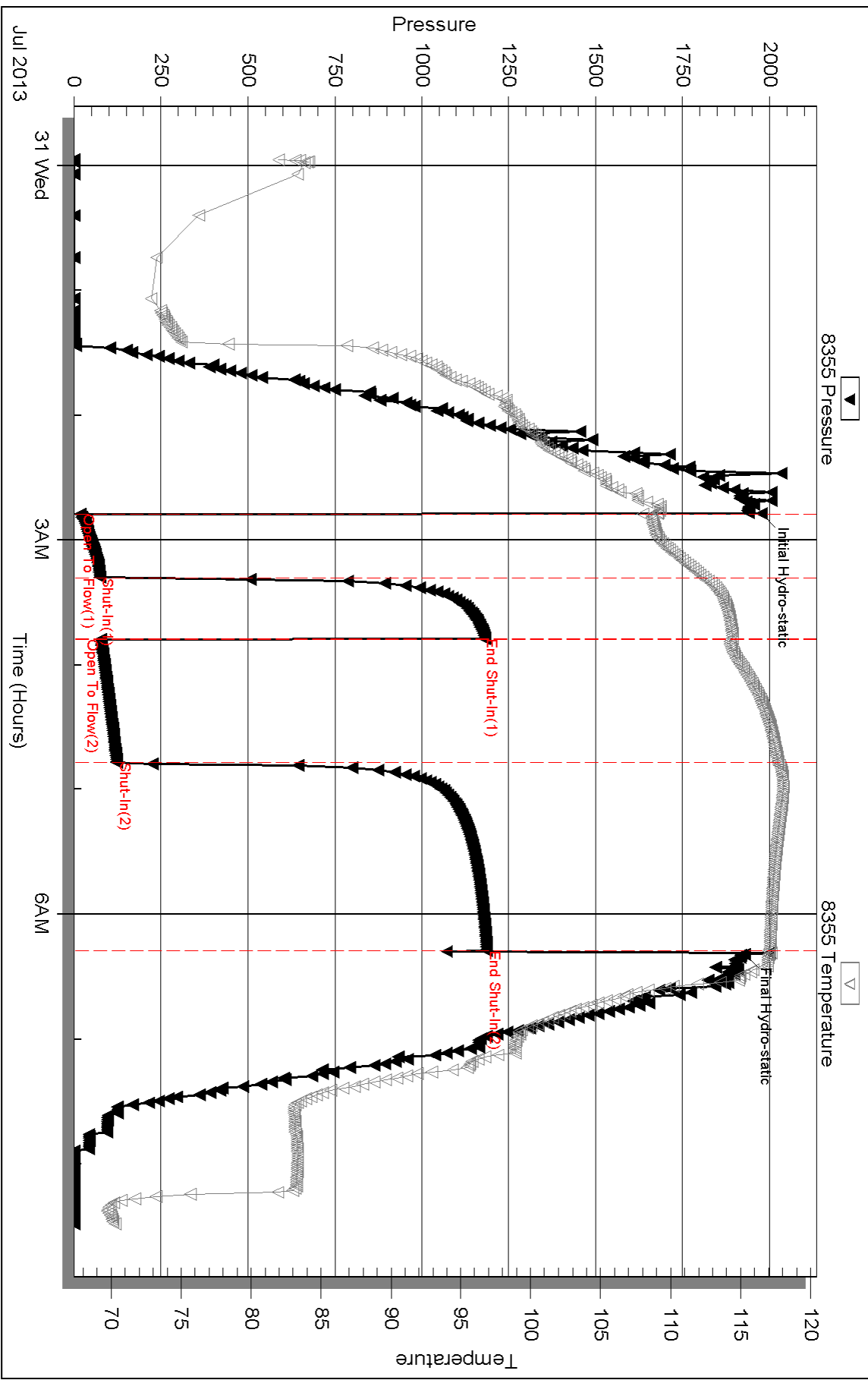
Serial #: 8355

Outside Shakespeare Oil Co, Inc

Oilley #4-16

DST Test Number: 3

### Pressure vs. Time



Triobite Testing, Inc

Ref. No: 53031

Printed: 2013.07.31 @ 10:07:08