



**TRILOBITE  
TESTING, INC.**

# DRILL STEM TEST REPORT

Shakespeare Oil Co, Inc

**16-14s-32w Logan Co. KS**

202 W Main St  
Salem, IL 62881

**Ottley #4-16**

Job Ticket: 49093

**DST#: 6**

ATTN: Tim Priest

Test Start: 2013.08.02 @ 19:12:00

## GENERAL INFORMATION:

Formation: **Myric Station**

Deviated: No Whipstock: ft (KB)

Time Tool Opened: 20:57:10

Time Test Ended: 00:59:09

Test Type: Conventional Bottom Hole (Reset)

Tester: Will MacLean

Unit No: 58

**Interval: 4295.00 ft (KB) To 4318.00 ft (KB) (TVD)**

Reference Elevations: 2818.00 ft (KB)

Total Depth: 4318.00 ft (KB) (TVD)

2808.00 ft (CF)

Hole Diameter: 7.88 inches Hole Condition: Good

KB to GR/CF: 10.00 ft

**Serial #: 8674 Inside**

Press @ Run Depth: 18.13 psig @ 4298.00 ft (KB)

Capacity: 8000.00 psig

Start Date: 2013.08.02

End Date:

2013.08.03

Last Calib.: 2013.08.03

Start Time: 19:12:00

End Time:

00:59:09

Time On Btm: 2013.08.02 @ 20:56:55

Time Off Btm: 2013.08.02 @ 23:00:25

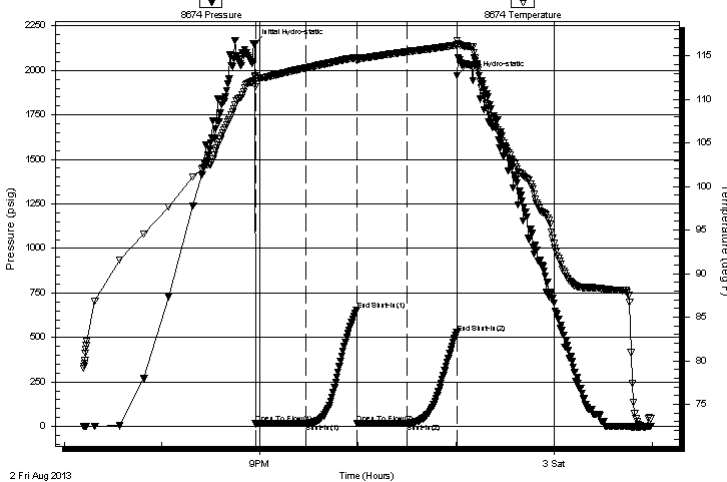
TEST COMMENT: IF- Weak Surface Blow Died in 2min

IS- No Blow

FF- No Blow

FS- No Blow

Pressure vs. Time



## PRESSURE SUMMARY

Time (Min.)	Pressure (psig)	Temp (deg F)	Annotation
0	2149.69	112.72	Initial Hydro-static
1	15.47	111.47	Open To Flow (1)
32	17.03	113.62	Shut-In(1)
62	653.79	114.80	End Shut-In(1)
63	17.02	114.45	Open To Flow (2)
93	18.13	115.48	Shut-In(2)
124	526.89	116.24	End Shut-In(2)
124	1969.12	116.79	Final Hydro-static

## Recovery

Length (ft)	Description	Volume (bbl)
5.00	100% m with a Few Oil Spots	0.02

\* Recovery from multiple tests

## Gas Rates

Choke (inches)	Pressure (psig)	Gas Rate (Mcf/d)



**TRILOBITE  
TESTING, INC.**

# DRILL STEM TEST REPORT

**FLUID SUMMARY**

Shakespeare Oil Co, Inc

**16-14s-32w Logan Co. KS**

202 W Main St  
Salem, IL 62881

**Ottley #4-16**

Job Ticket: 49093

**DST#: 6**

ATTN: Tim Priest

Test Start: 2013.08.02 @ 19:12:00

## Mud and Cushion Information

Mud Type: Gel Chem

Cushion Type:

Oil API:

deg API

Mud Weight: 9.00 lb/gal

Cushion Length:

ft

Water Salinity:

ppm

Viscosity: 50.00 sec/qt

Cushion Volume:

bbbl

Water Loss: 12.39 in<sup>3</sup>

Gas Cushion Type:

Resistivity: ohm.m

Gas Cushion Pressure:

psig

Salinity: 7100.00 ppm

Filter Cake: 2.00 inches

## Recovery Information

Recovery Table

Length ft	Description	Volume bbl
5.00	100% m with a Few Oil Spots	0.025

Total Length: 5.00 ft      Total Volume: 0.025 bbl

Num Fluid Samples: 0

Num Gas Bombs: 0

Serial #:

Laboratory Name:

Laboratory Location:

Recovery Comments:

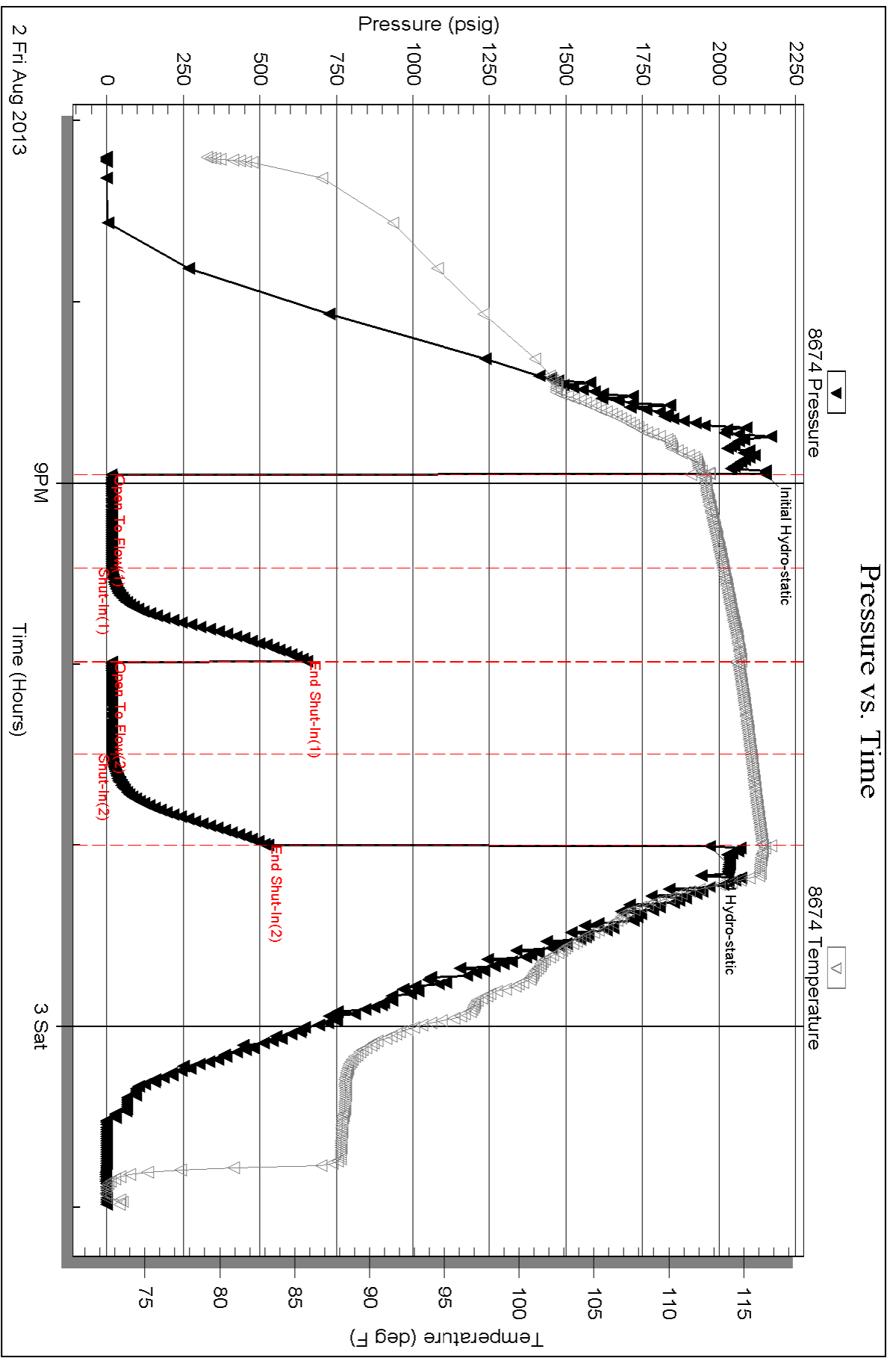
Serial #: 8674

Inside

Shakespeare Oil Co, Inc

Oilley #4-16

DST Test Number: 6



Triobite Testing, Inc

Ref. No: 49093

Printed: 2013.08.03 @ 06:14:35