



TRILOBITE TESTING, INC.

DRILL STEM TEST REPORT

WOOLSEY OPERATING CO.LLC

35-31S-12W, BARBER

125 N MARKEY STE 1000
WICHITA KS 67202

GRESS-DAWSON #2

ATTN: SCOTT ALBERG

Job Ticket: 52319

DST#: 1

Test Start: 2013.05.22 @ 15:50:00

GENERAL INFORMATION:

Formation: **MISS**

Deviated: No Whipstock: 1572.00 ft (KB)

Time Tool Opened: 18:14:15

Time Test Ended: 00:59:45

Test Type: Conventional Bottom Hole (Initial)

Tester: RANDY WILLIAMS

Unit No: 47

Interval: 4320.00 ft (KB) To 4350.00 ft (KB) (TVD)

Reference Elevations: 1572.00 ft (KB)

Total Depth: 4350.00 ft (KB) (TVD)

1560.00 ft (CF)

Hole Diameter: 7.88 inches Hole Condition: Fair

KB to GR/CF: 12.00 ft

Serial #: 6773

Press @ RunDepth: 119.67 psig @ ft (KB)

Capacity: 8000.00 psig

Start Date: 2013.05.22

End Date:

2013.05.23

Last Calib.:

2013.05.23

Start Time: 15:50:05

End Time:

00:59:45

Time On Btm:

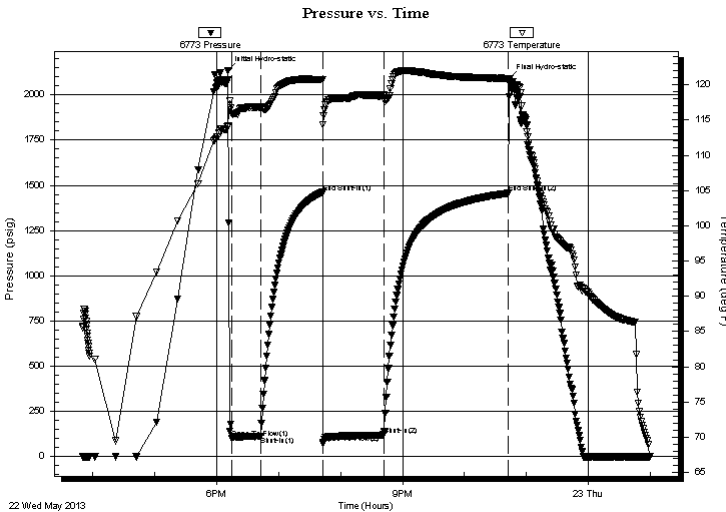
2013.05.22 @ 18:11:00

Time Off Btm:

2013.05.22 @ 22:43:30

TEST COMMENT: IF-30- SBB, BOTTOM BUCKET 30 SEC'S
ISI-60- YBB, BOTTOM BUCKET
FF-60- SBB, BOTTOM BUCKET AT OPEN
FSI-120- YBB, GAS TO SURFACE 16 MIN'S INTO

PRESSURE SUMMARY



Time (Min.)	Pressure (psig)	Temp (deg F)	Annotation
0	2135.76	114.20	Initial Hydro-static
4	101.32	115.87	Open To Flow (1)
32	111.72	116.84	Shut-In(1)
92	1461.37	120.70	End Shut-In(1)
92	74.52	114.34	Open To Flow (2)
151	119.67	118.56	Shut-In(2)
272	1456.95	120.89	End Shut-In(2)
273	2089.11	120.31	Final Hydro-static

Recovery

Length (ft)	Description	Volume (bbl)
114.00	MUD 100%	0.56
121.00	G-40%, O-10%, W-5%, M-45%	1.62

Gas Rates

Choke (inches)	Pressure (psig)	Gas Rate (Mcf/d)



**TRILOBITE
TESTING, INC.**

DRILL STEM TEST REPORT

FLUID SUMMARY

WOOLSEY OPERATING CO.LLC

35-31S-12W, BARBER

125 N MARKEY STE 1000
WICHITA KS 67202

GRESS-DAWSON #2

Job Ticket: 52319

DST#: 1

ATTN: SCOTT ALBERG

Test Start: 2013.05.22 @ 15:50:00

Mud and Cushion Information

Mud Type: Gel Chem

Cushion Type:

Oil API:

deg API

Mud Weight: 9.00 lb/gal

Cushion Length:

ft

Water Salinity:

ppm

Viscosity: 51.00 sec/qt

Cushion Volume:

bbbl

Water Loss: 9.18 in³

Gas Cushion Type:

Resistivity: ohm.m

Gas Cushion Pressure:

psig

Salinity: 4000.00 ppm

Filter Cake: 3.00 inches

Recovery Information

Recovery Table

Length ft	Description	Volume bbl
114.00	MUD 100%	0.561
121.00	G-40%, O-10%, W-5%, M-45%	1.624

Total Length: 235.00 ft

Total Volume: 2.185 bbl

Num Fluid Samples: 0

Num Gas Bombs: 0

Serial #:

Laboratory Name:

Laboratory Location:

Recovery Comments:

