



**TRILOBITE
TESTING, INC.**

DRILL STEM TEST REPORT

Samuel Gary Jr. and Associates, Inc.

32 16s 14w Barton

1515 Wynkoop St. Ste 700
Denver, CO 80202

Bob et al 1-32

Job Ticket: 53809

DST#: 1

ATTN: Chris Mitchell

Test Start: 2013.06.02 @ 23:50:00

GENERAL INFORMATION:

Formation: **LKC " D "**

Deviated: No Whipstock: 2011.00 ft (KB)

Time Tool Opened: 01:28:30

Time Test Ended: 06:25:00

Test Type: Conventional Bottom Hole (Initial)

Tester: Jim Svaty

Unit No: 41

Interval: 3240.00 ft (KB) To 3296.00 ft (KB) (TVD)

Reference Elevations: 2011.00 ft (KB)

Total Depth: 3296.00 ft (KB) (TVD)

2001.00 ft (CF)

Hole Diameter: 7.88 inches Hole Condition: Fair

KB to GR/CF: 10.00 ft

Serial #: 8322 Outside

Press @ Run Depth: 20.61 psig @ 3260.00 ft (KB)

Capacity: 8000.00 psig

Start Date: 2013.06.02

End Date:

2013.06.03

Last Calib.:

2013.06.03

Start Time: 23:50:01

End Time:

06:24:30

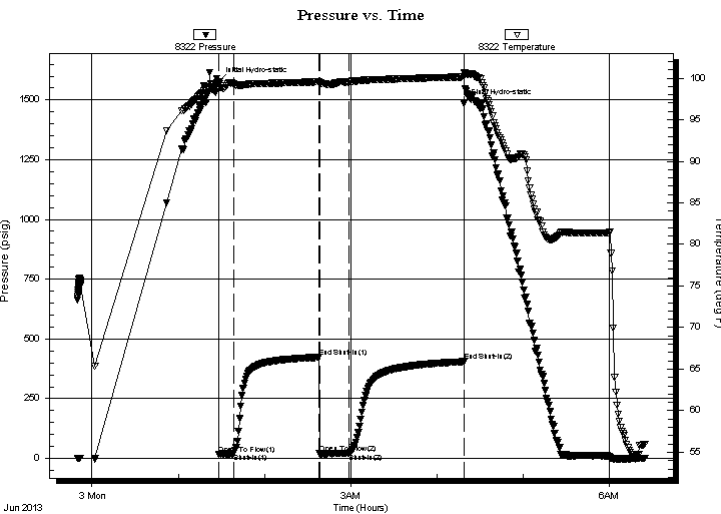
Time On Btm:

2013.06.03 @ 01:28:20

Time Off Btm:

2013.06.03 @ 04:18:40

TEST COMMENT: 10-IFP-Good Surge on Open Weak Surface Blow
60-ISIP- No Blow
20-FFP- No Blow
80-FSIP- No Blow



PRESSURE SUMMARY

Time (Min.)	Pressure (psig)	Temp (deg F)	Annotation
0	1575.18	99.38	Initial Hydro-static
1	17.92	98.76	Open To Flow (1)
10	20.82	99.31	Shut-In(1)
70	422.75	99.56	End Shut-In(1)
70	19.20	99.42	Open To Flow (2)
91	20.61	99.56	Shut-In(2)
171	404.99	100.15	End Shut-In(2)
171	1485.29	100.69	Final Hydro-static

Recovery

Length (ft)	Description	Volume (bbl)
7.00	Mud 100%	0.10

Gas Rates

Choke (inches)	Pressure (psig)	Gas Rate (Mcf/d)



TRILOBITE TESTING, INC.

DRILL STEM TEST REPORT

Samuel Gary Jr. and Associates, Inc.

32 16s 14w Barton

1515 Wynkoop St. Ste 700
Denver, CO 80202

Bob et al 1-32

Job Ticket: 53809

DST#: 1

ATTN: Chris Mitchell

Test Start: 2013.06.02 @ 23:50:00

GENERAL INFORMATION:

Formation: **LKC " D "**

Deviated: No Whipstock: 2011.00 ft (KB)

Time Tool Opened: 01:28:30

Time Test Ended: 06:25:00

Test Type: Conventional Bottom Hole (Initial)

Tester: Jim Svaty

Unit No: 41

Interval: 3240.00 ft (KB) To 3296.00 ft (KB) (TVD)

Reference Elevations: 2011.00 ft (KB)

Total Depth: 3296.00 ft (KB) (TVD)

2001.00 ft (CF)

Hole Diameter: 7.88 inches Hole Condition: Fair

KB to GR/CF: 10.00 ft

Serial #: 8734 Fluid

Press @ RunDepth: psig @ 3206.00 ft (KB)

Capacity: 8000.00 psig

Start Date: 2013.06.02

End Date: 2013.06.03

Last Calib.: 2013.06.03

Start Time: 23:50:01

End Time: 06:24:20

Time On Btm:

Time Off Btm:

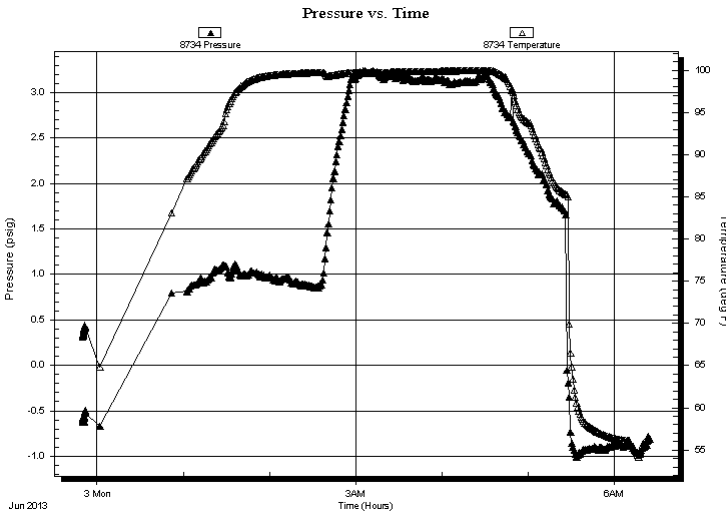
TEST COMMENT: 10-IFP-Good Surge on Open Weak Surface Blow

60-ISIP- No Blow

20-FFP- No Blow

80-FSIP- No Blow

PRESSURE SUMMARY



Time (Min.)	Pressure (psig)	Temp (deg F)	Annotation

Recovery

Length (ft)	Description	Volume (bbl)
7.00	Mud 100%	0.10

Gas Rates

Choke (inches)	Pressure (psig)	Gas Rate (Mcf/d)



**TRILOBITE
TESTING, INC.**

DRILL STEM TEST REPORT

FLUID SUMMARY

Samuel Gary Jr. and Associates, Inc.

32 16s 14w Barton

1515 Wynkoop St. Ste 700
Denver, CO 80202

Bob et al 1-32

Job Ticket: 53809

DST#: 1

ATTN: Chris Mitchell

Test Start: 2013.06.02 @ 23:50:00

Mud and Cushion Information

Mud Type: Gel Chem

Cushion Type:

Oil API:

deg API

Mud Weight: 9.00 lb/gal

Cushion Length:

ft

Water Salinity:

ppm

Viscosity: 52.00 sec/qt

Cushion Volume:

bbbl

Water Loss: 9.55 in³

Gas Cushion Type:

Resistivity: ohm.m

Gas Cushion Pressure:

psig

Salinity: 8400.00 ppm

Filter Cake: 0.00 inches

Recovery Information

Recovery Table

Length ft	Description	Volume bbl
7.00	Mud 100%	0.098

Total Length: 7.00 ft Total Volume: 0.098 bbl

Num Fluid Samples: 0

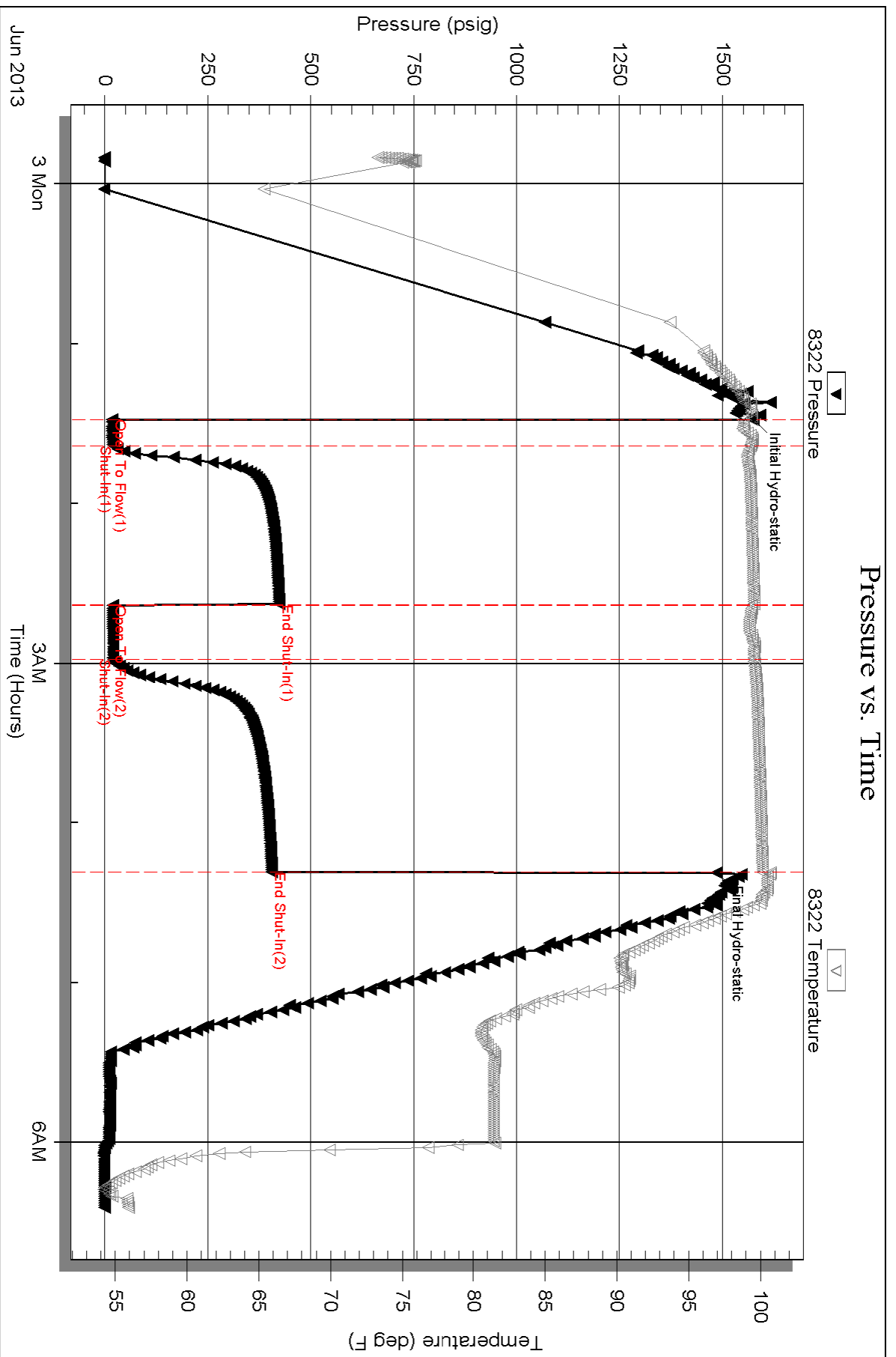
Num Gas Bombs: 0

Serial #:

Laboratory Name:

Laboratory Location:

Recovery Comments: SAMPLER 100ml Mud 100% - 165 psi



Serial #: 8734

Fluid

Samuel Gary Jr. and Associates, Inc.

Bob et al 1-32

DST Test Number: 1

