



Current

Field Stelbar
 County Harper
 State Kansas
 Well **Meineke 2-26**
 Location 26-33S-6W
 KB 1280'
 GL 1271'
 Spud Date 6/4/1996
 TD Date 6/10/1996
 First Sales 8/15/1996

Wellbore Schematic

15-077-21304
 API No

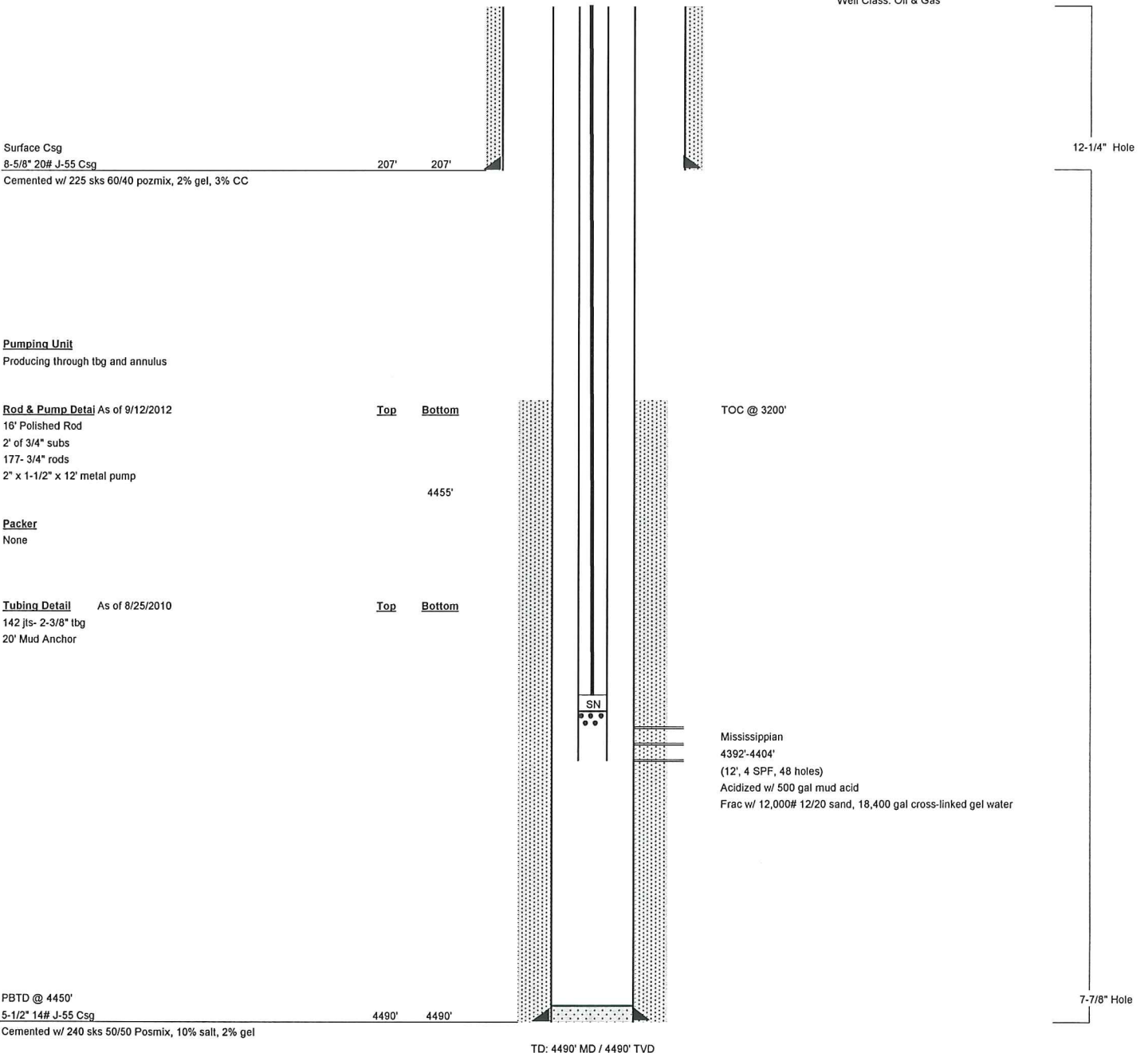
Original Completion (8/19/1996)
 Current X
 Proposed

Well Bore Data

MD TVD

Data On This Completion

Well Class: Oil & Gas



PBTD @ 4450'
 5-1/2" 14# J-55 Csg
 Cemented w/ 240 sks 50/50 Posmix, 10% salt, 2% gel

TD: 4490' MD / 4490' TVD

7-7/8" Hole