



DRILL STEM TEST REPORT

Prepared For: **F.G.Holl Company LLC**

9431 East Central Suite 100
Wichita, Kansas 67206 2563

ATTN: Rene Husted

Farthing #2-32

32-21s-15w Pawnee

Start Date: 2013.09.06 @ 00:00:00

End Date: 2013.09.06 @ 00:00:00

Job Ticket #: 17084 DST #: 3

Superior Testers Enterprises LLC
PO Box 138 Great Bend KS 67530
1-800-792-6902

Printed: 2013.09.06 @ 09:12:22

F.G.Holl Company LLC

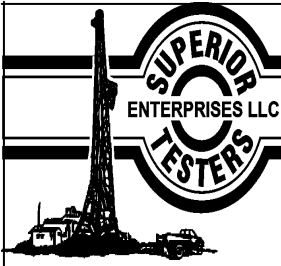
32-21s-15w Pawnee

Farthing #2-32

DST # 3

Kansas City "H"

2013.09.06



DRILL STEM TEST REPORT

F.G.Holl Company LLC

32-21s-15w Pawnee

9431 East Central Suite 100
Wichita, Kansas 67206 2563

Farthing #2-32

Job Ticket: 17084

DST#: 3

ATTN: Rene Husted

Test Start: 2013.09.06 @ 00:00:00

GENERAL INFORMATION:

Formation: **Kansas City "H"**

Deviated: No Whipstock: ft (KB)

Time Tool Opened: 00:00:00

Time Test Ended: 00:00:00

Test Type: Conventional Bottom Hole (Initial)

Tester: Gene Budiig

Unit No: 3335

Interval: 3624.00 ft (KB) To 3650.00 ft (KB) (TVD)

Reference Elevations: 1985.00 ft (KB)

Total Depth: 3650.00 ft (KB) (TVD)

1977.00 ft (CF)

Hole Diameter: 7.88 inches Hole Condition: Fair

KB to GR/CF: 8.00 ft

Serial #: 6748 Outside

Press@RunDepth: 1167.91 psia @ 3647.00 ft (KB)

Capacity: 5000.00 psia

Start Date: 2013.09.06

End Date: 2013.09.06

Last Calib.: 2013.09.06

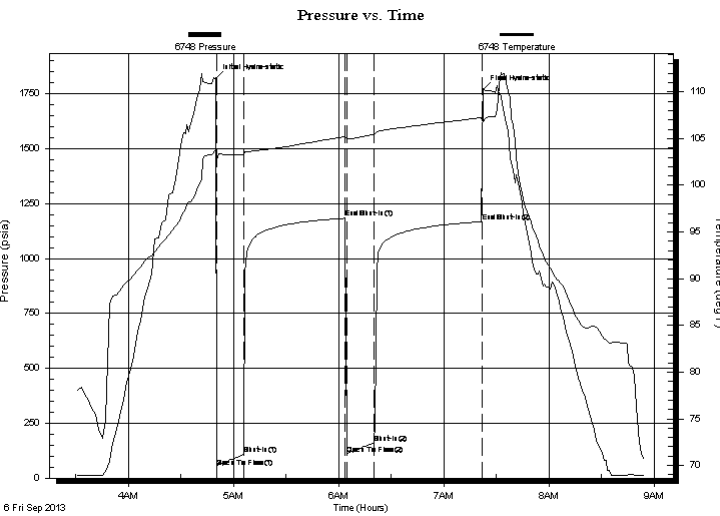
Start Time: 03:30:00

End Time: 08:55:00

Time On Btm: 2013.09.06 @ 04:50:00

Time Off Btm: 2013.09.06 @ 07:22:30

TEST COMMENT: 1st Opening 15 Minutes Weak building blow built to the bottom of 5 gallon bucket in 11 minutes
 1st Shut-In 60 Minutes-No blow back
 2nd Opening 15 Minutes Weak building blow built to the bottom of a 5 gallon bucket in 12 minutes
 2nd Shut-In 60 Minutes-No blow back



PRESSURE SUMMARY

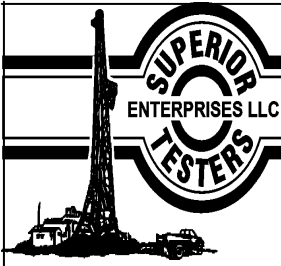
Time (Min.)	Pressure (psia)	Temp (deg F)	Annotation
0	1818.00	103.71	Initial Hydro-static
1	49.83	102.70	Open To Flow (1)
16	107.15	103.28	Shut-In(1)
74	1182.97	105.21	End Shut-In(1)
75	109.48	104.97	Open To Flow (2)
90	158.83	105.44	Shut-In(2)
152	1167.91	107.23	End Shut-In(2)
153	1767.12	106.84	Final Hydro-static

Recovery

Length (ft)	Description	Volume (bbl)
240.00	Slightly muddy Water	3.37
0.00	Chlorides 76000	0.00

Gas Rates

Choke (inches)	Pressure (psia)	Gas Rate (Mcf/d)



DRILL STEM TEST REPORT

F.G.Holl Company LLC

32-21s-15w Pawnee

9431 East Central Suite 100
Wichita, Kansas 67206 2563

Farthing #2-32

Job Ticket: 17084

DST#: 3

ATTN: Rene Husted

Test Start: 2013.09.06 @ 00:00:00

GENERAL INFORMATION:

Formation: **Kansas City "H"**

Deviated: No Whipstock: ft (KB)

Time Tool Opened: 00:00:00

Time Test Ended: 00:00:00

Test Type: Conventional Bottom Hole (Initial)

Tester: Gene Budiig

Unit No: 3335

Interval: 3624.00 ft (KB) To 3650.00 ft (KB) (TVD)

Reference Elevations: 1985.00 ft (KB)

Total Depth: 3650.00 ft (KB) (TVD)

1977.00 ft (CF)

Hole Diameter: 7.88 inches Hole Condition: Fair

KB to GR/CF: 8.00 ft

Serial #: 6663

Inside

Press@RunDepth: 1166.45 psia @ 3646.00 ft (KB)

Capacity: 5000.00 psia

Start Date: 2013.09.06

End Date:

2013.09.06

Last Calib.:

2013.09.06

Start Time: 03:30:00

End Time:

08:57:30

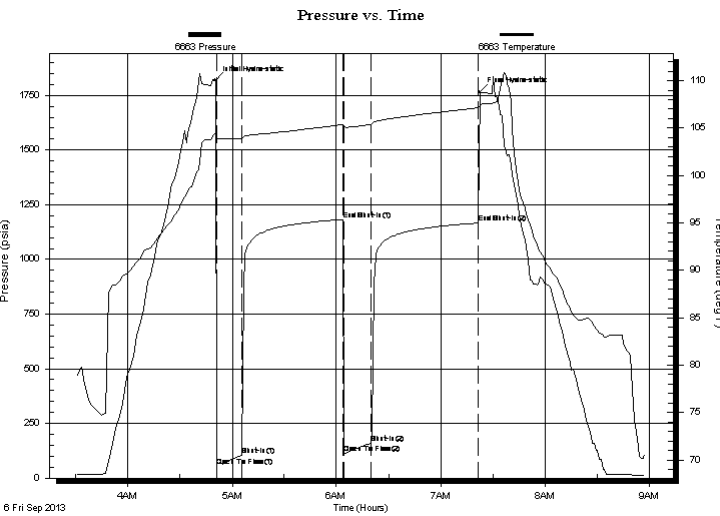
Time On Btm:

2013.09.06 @ 04:50:30

Time Off Btm:

2013.09.06 @ 07:22:30

TEST COMMENT: 1st Opening 15 Minutes Weak building blow built to the bottom of 5 gallon bucket in 11 minutes
 1st Shut-In 60 Minutes-No blow back
 2nd Opening 15 Minutes Weak building blow built to the bottom of a 5 gallon bucket in 12 minutes
 2nd Shut-In 60 Minutes-No blow back



PRESSURE SUMMARY

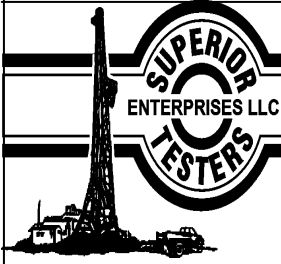
Time (Min.)	Pressure (psia)	Temp (deg F)	Annotation
0	1819.68	104.35	Initial Hydro-static
1	54.32	103.94	Open To Flow (1)
15	105.08	103.88	Shut-In(1)
74	1182.09	105.37	End Shut-In(1)
74	111.96	105.11	Open To Flow (2)
90	159.45	105.38	Shut-In(2)
151	1166.45	107.12	End Shut-In(2)
152	1765.53	107.38	Final Hydro-static

Recovery

Length (ft)	Description	Volume (bbl)
240.00	Slightly muddy Water	3.37
0.00	Chlorides 76000	0.00

Gas Rates

	Choke (inches)	Pressure (psia)	Gas Rate (Mcf/d)



DRILL STEM TEST REPORT

TOOL DIAGRAM

F.G.Holl Company LLC

32-21s-15w Pawnee

9431 East Central Suite 100
Wichita, Kansas 67206 2563

Farthing #2-32

Job Ticket: 17084

DST#: 3

ATTN: Rene Husted

Test Start: 2013.09.06 @ 00:00:00

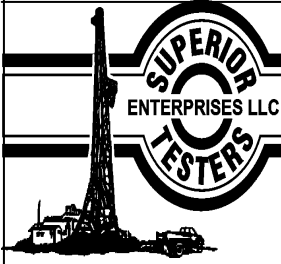
Tool Information

Drill Pipe:	Length: 3626.00 ft	Diameter: 3.80 inches	Volume: 50.86 bbl	Tool Weight: 2000.00 lb
Heavy Wt. Pipe:	Length: 0.00 ft	Diameter: 0.00 inches	Volume: 0.00 bbl	Weight set on Packer: 20000.00 lb
Drill Collar:	Length: 0.00 ft	Diameter: 0.00 inches	Volume: 0.00 bbl	Weight to Pull Loose: 60000.00 lb
			<u>Total Volume: 50.86 bbl</u>	Tool Chased 0.00 ft
Drill Pipe Above KB:	30.00 ft			String Weight: Initial 49000.00 lb
Depth to Top Packer:	3624.00 ft			Final 50000.00 lb
Depth to Bottom Packer:	ft			
Interval between Packers:	26.00 ft			
Tool Length:	54.00 ft			
Number of Packers:	1	Diameter: 6.75 inches		

Tool Comments:

Tool Description	Length (ft)	Serial No.	Position	Depth (ft)	Accum. Lengths
------------------	-------------	------------	----------	------------	----------------

Shut-In Tool	5.00			3601.00	
Hydraulic Tool	5.00			3606.00	
Safety Joint	2.00			3608.00	
Jars	6.00			3614.00	
Packer	5.00			3619.00	28.00 Bottom Of Top Packer
Packer	5.00			3624.00	
Anchor	21.00			3645.00	
Recorder	1.00	6663	Inside	3646.00	
Recorder	1.00	6748	Outside	3647.00	
Bullnose	3.00			3650.00	26.00 Bottom Packers & Anchor
Total Tool Length:	54.00				



DRILL STEM TEST REPORT

FLUID SUMMARY

F.G.Holl Company LLC

32-21s-15w Pawnee

9431 East Central Suite 100
Wichita, Kansas 67206 2563

Farthing #2-32

Job Ticket: 17084

DST#: 3

ATTN: Rene Husted

Test Start: 2013.09.06 @ 00:00:00

Mud and Cushion Information

Mud Type: Gel Chem
Mud Weight: 9.00 lb/gal
Viscosity: 58.00 sec/qt
Water Loss: 8.80 in³
Resistivity: ohm.m
Salinity: 5000.00 ppm
Filter Cake: 1.00 inches

Cushion Type:
Cushion Length: ft
Cushion Volume: bbl
Gas Cushion Type:
Gas Cushion Pressure: psia

Oil API: deg API
Water Salinity: ppm

Recovery Information

Recovery Table

Length ft	Description	Volume bbl
240.00	Slightly muddy Water	3.367
0.00	Chlorides 76000	0.000

Total Length: 240.00 ft Total Volume: 3.367 bbl

Num Fluid Samples: 0

Num Gas Bombs: 0

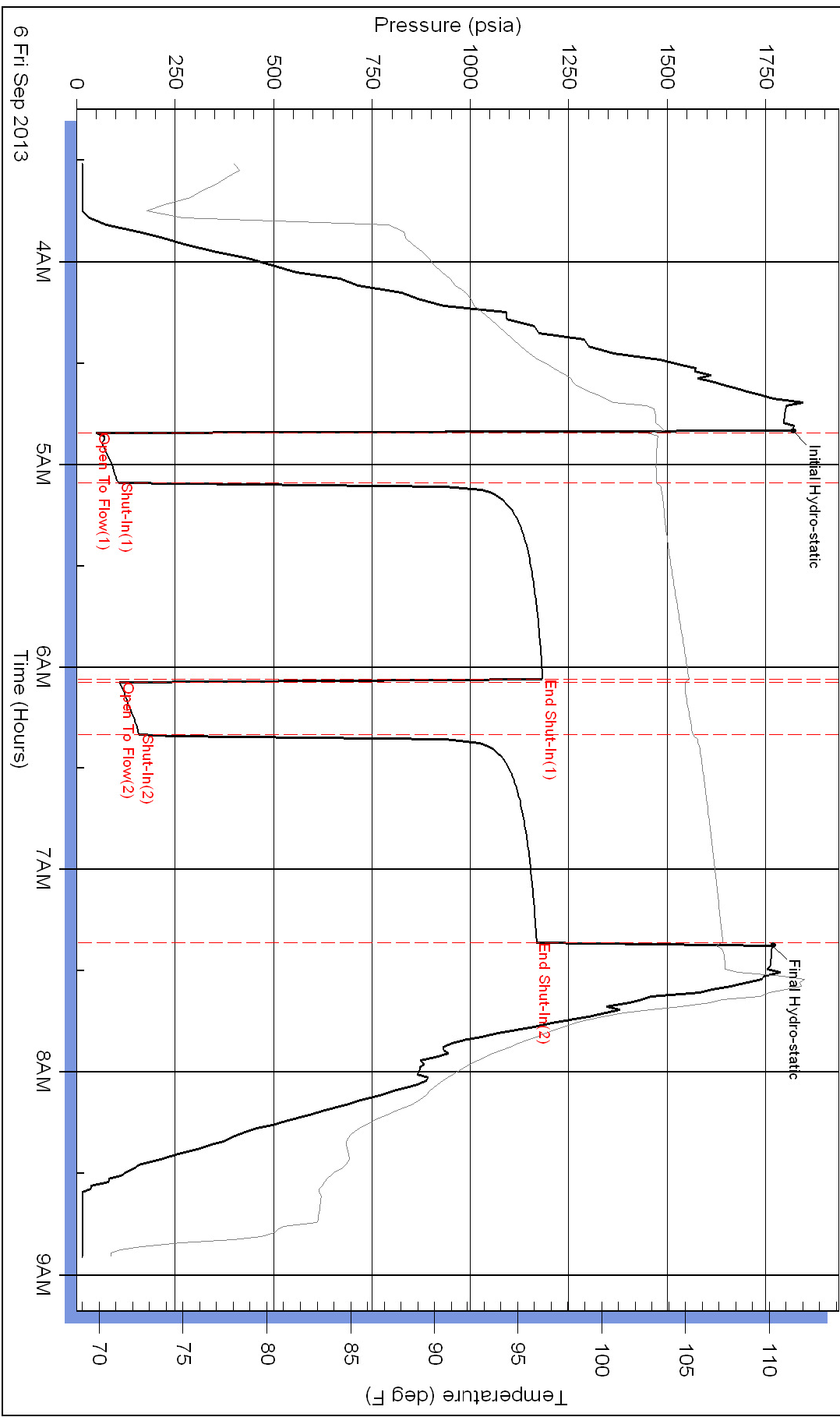
Serial #:

Laboratory Name:

Laboratory Location:

Recovery Comments:

Pressure vs. Time



Serial #: 6663

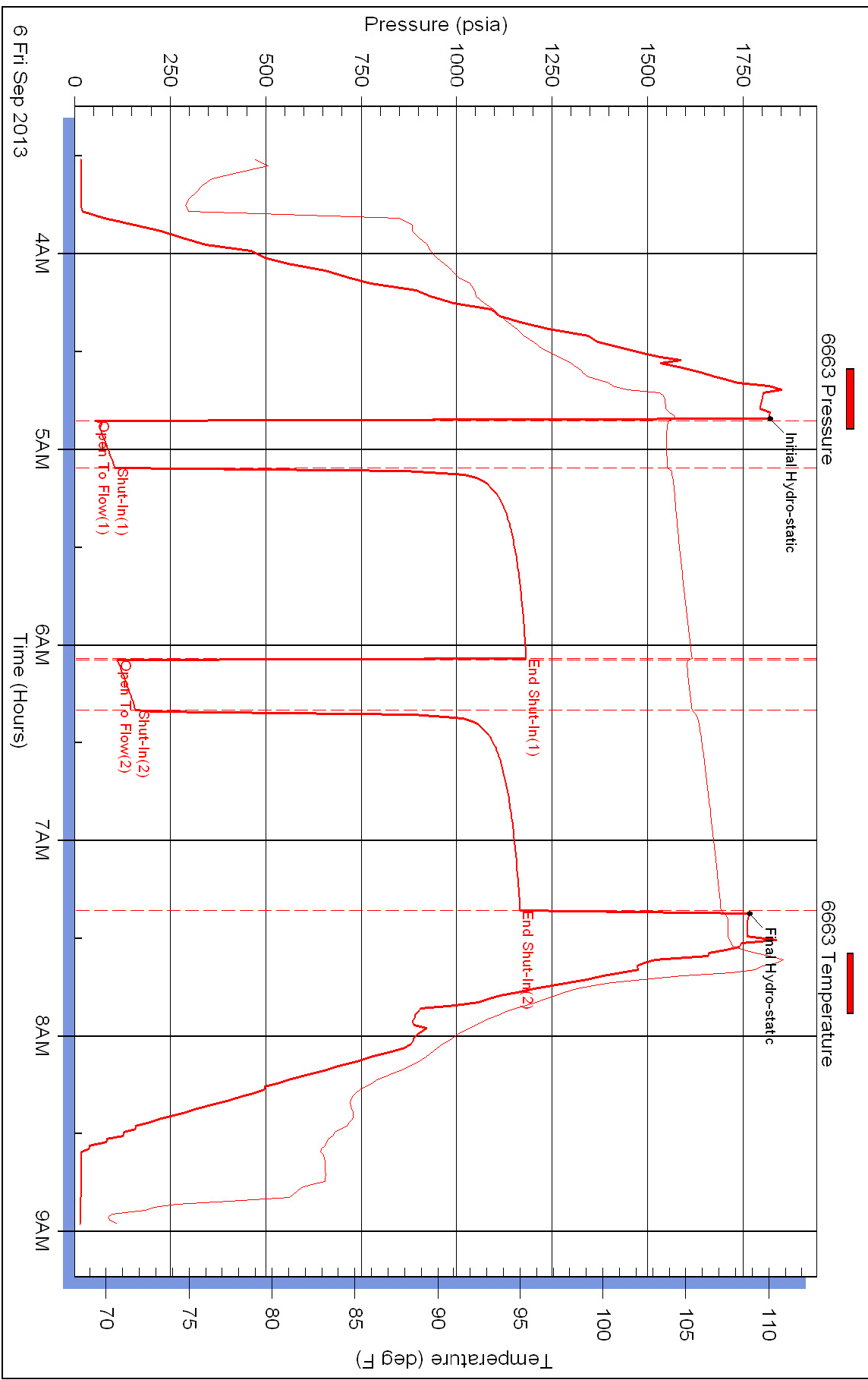
Inside

F.G.Holl Company LLC

Farthing #2-32

DST Test Number: 3

Pressure vs. Time



Superior Testers Enterprises LLC

Ref. No: 17084

Printed: 2013.09.06 @ 09:12:23