



DRILL STEM TEST REPORT

Prepared For: **F.G.Holl Company LLC**

9431 East Central Suite 100
Wichita, Kansas 67206 2563

ATTN: Rene Hustead

Farthing #2-32

32-21s-15w Pawnee

Start Date: 2013.09.09 @ 00:00:00

End Date: 2013.09.09 @ 00:00:00

Job Ticket #: 17088 DST #: 7

Superior Testers Enterprises LLC
PO Box 138 Great Bend KS 67530
1-800-792-6902

Printed: 2013.09.09 @ 06:32:32



DRILL STEM TEST REPORT

F.G.Holl Company LLC

32-21s-15w Pawnee

9431 East Central Suite 100
Wichita, Kansas 67206 2563

Farthing #2-32

Job Ticket: 17088

DST#: 7

ATTN: Rene Husted

Test Start: 2013.09.09 @ 00:00:00

GENERAL INFORMATION:

Formation: **Arbuckle**

Deviated: No Whipstock: ft (KB)

Time Tool Opened: 00:00:00

Time Test Ended: 00:00:00

Test Type: Conventional Bottom Hole (Initial)

Tester: Gene Budig

Unit No: 3335

Interval: 3885.00 ft (KB) To 3940.00 ft (KB) (TVD)

Reference Elevations: 1986.00 ft (KB)

Total Depth: 3940.00 ft (KB) (TVD)

1978.00 ft (CF)

Hole Diameter: 7.88 inches Hole Condition: Fair

KB to GR/CF: 8.00 ft

Serial #: 6663 Inside

Press@RunDepth: 103.80 psia @ 3935.75 ft (KB)

Capacity: 5000.00 psia

Start Date: 2013.09.09 End Date: 2013.09.09

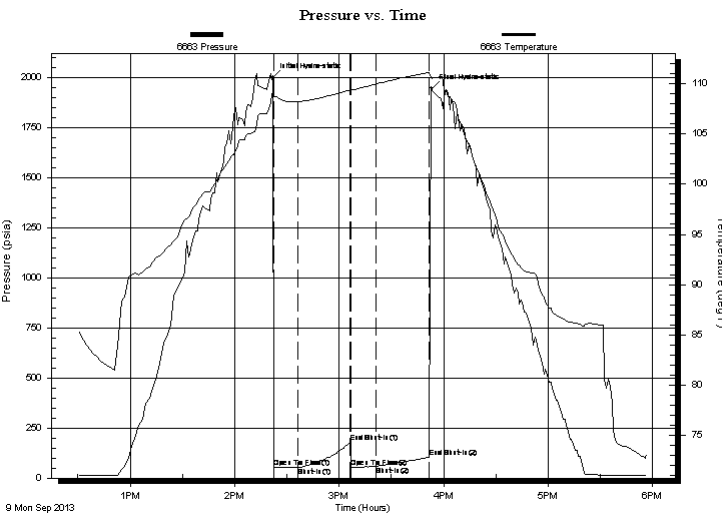
Last Calib.: 2013.09.09

Start Time: 12:30:00 End Time: 17:57:00

Time On Btm: 2013.09.09 @ 14:22:00

Time Off Btm: 2013.09.09 @ 15:53:00

TEST COMMENT: 1st Opening 15 Minutes Weak blow for 6 minutes and died
 1st Shut-In 30 Minutes No blow back
 2nd Opening 15 Minutes No blow
 2nd Shut-In 30 Minutes-No blow back



PRESSURE SUMMARY

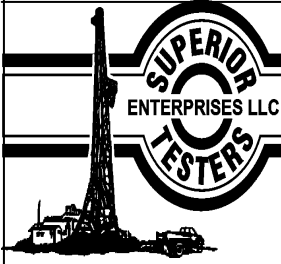
Time (Min.)	Pressure (psia)	Temp (deg F)	Annotation
0	1998.81	109.08	Initial Hydro-static
1	53.66	108.70	Open To Flow (1)
15	54.70	108.21	Shut-In(1)
44	177.31	109.34	End Shut-In(1)
45	55.01	109.32	Open To Flow (2)
59	58.52	109.95	Shut-In(2)
90	103.80	111.11	End Shut-In(2)
91	1945.95	110.52	Final Hydro-static

Recovery

Length (ft)	Description	Volume (bbl)
3.00	mud	0.04

Gas Rates

Choke (inches)	Pressure (psia)	Gas Rate (Mcf/d)



DRILL STEM TEST REPORT

F.G.Holl Company LLC

32-21s-15w Pawnee

9431 East Central Suite 100
Wichita, Kansas 67206 2563

Farthing #2-32

Job Ticket: 17088

DST#: 7

ATTN: Rene Husted

Test Start: 2013.09.09 @ 00:00:00

GENERAL INFORMATION:

Formation: **Arbuckle**

Deviated: No Whipstock: ft (KB)

Time Tool Opened: 00:00:00

Time Test Ended: 00:00:00

Test Type: Conventional Bottom Hole (Initial)

Tester: Gene Budig

Unit No: 3335

Interval: 3885.00 ft (KB) To 3940.00 ft (KB) (TVD)

Reference Elevations: 1986.00 ft (KB)

Total Depth: 3940.00 ft (KB) (TVD)

1978.00 ft (CF)

Hole Diameter: 7.88 inches Hole Condition: Fair

KB to GR/CF: 8.00 ft

Serial #: 6748 Inside

Press@RunDepth: 106.85 psia @ 3936.75 ft (KB)

Capacity: 5000.00 psia

Start Date: 2013.09.09 End Date: 2013.09.09

Last Calib.: 2013.09.09

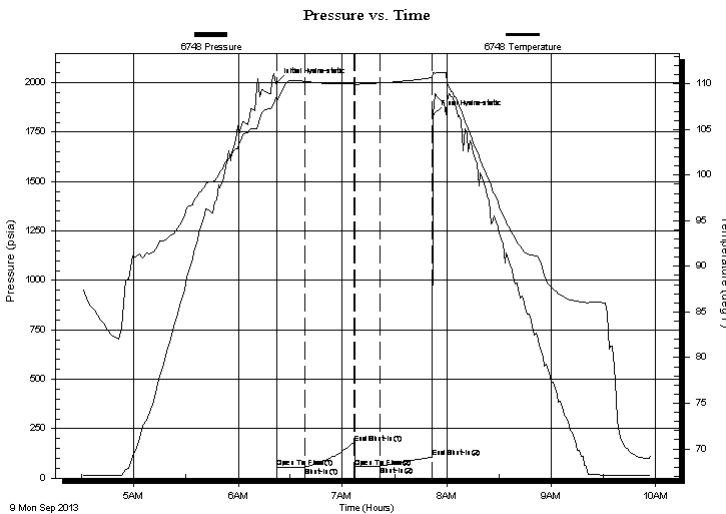
Start Time: 04:30:00 End Time: 09:58:00

Time On Btm: 2013.09.09 @ 06:22:00

Time Off Btm: 2013.09.09 @ 07:52:30

TEST COMMENT: 1st Opening 15 Minutes Weak blow for 6 minutes and died
1st Shut-In 30 Minutes No blow back
2nd Opening 15 Minutes No blow
2nd Shut-In 30 Minutes-No blow back

PRESSURE SUMMARY



Time (Min.)	Pressure (psia)	Temp (deg F)	Annotation
0	1999.01	108.61	Initial Hydro-static
1	54.45	108.05	Open To Flow (1)
17	56.24	110.26	Shut-In(1)
45	174.06	110.00	End Shut-In(1)
45	56.78	109.96	Open To Flow (2)
60	60.76	110.09	Shut-In(2)
90	106.85	110.67	End Shut-In(2)
91	1837.21	111.25	Final Hydro-static

Recovery

Length (ft)	Description	Volume (bbl)
3.00	mud	0.04

Gas Rates

Choke (inches)	Pressure (psia)	Gas Rate (Mcf/d)



DRILL STEM TEST REPORT

TOOL DIAGRAM

F.G.Holl Company LLC

32-21s-15w Pawnee

9431 East Central Suite 100
Wichita, Kansas 67206 2563

Farthing #2-32

Job Ticket: 17088

DST#:7

ATTN: Rene Husted

Test Start: 2013.09.09 @ 00:00:00

Tool Information

Drill Pipe:	Length: 3874.00 ft	Diameter: 3.80 inches	Volume: 54.34 bbl	Tool Weight: 2000.00 lb
Heavy Wt. Pipe:	Length: 0.00 ft	Diameter: 0.00 inches	Volume: 0.00 bbl	Weight set on Packer: 20000.00 lb
Drill Collar:	Length: 0.00 ft	Diameter: 0.00 inches	Volume: 0.00 bbl	Weight to Pull Loose: 58000.00 lb
			<u>Total Volume: 54.34 bbl</u>	Tool Chased 0.00 ft
Drill Pipe Above KB:	17.00 ft			String Weight: Initial 52000.00 lb
Depth to Top Packer:	3885.00 ft			Final 52000.00 lb
Depth to Bottom Packer:	ft			
Interval between Packers:	54.75 ft			
Tool Length:	82.75 ft			
Number of Packers:	2	Diameter: 6.75 inches		
Tool Comments:				

Tool Description	Length (ft)	Serial No.	Position	Depth (ft)	Accum. Lengths
------------------	-------------	------------	----------	------------	----------------

Shut-In Tool	5.00			3862.00	
Hydraulic Tool	5.00			3867.00	
Safety Joint	2.00			3869.00	
Jars	6.00			3875.00	
Packer	5.00			3880.00	28.00 Bottom Of Top Packer
Packer	5.00			3885.00	
Anchor	6.00			3891.00	
Change Over Sub	0.75			3891.75	
Drill Pipe	32.25			3924.00	
Change Over Sub	0.75			3924.75	
Anchor	10.00			3934.75	
Recorder	1.00	6663	Inside	3935.75	
Recorder	1.00	6748	Inside	3936.75	
Bullnose	3.00			3939.75	54.75 Bottom Packers & Anchor

Total Tool Length: 82.75



DRILL STEM TEST REPORT

FLUID SUMMARY

F.G.Holl Company LLC

32-21s-15w Pawnee

9431 East Central Suite 100
Wichita, Kansas 67206 2563

Farthing #2-32

Job Ticket: 17088

DST#: 7

ATTN: Rene Husted

Test Start: 2013.09.09 @ 00:00:00

Mud and Cushion Information

Mud Type: Gel Chem

Cushion Type:

Oil API:

deg API

Mud Weight: 9.00 lb/gal

Cushion Length: ft

Water Salinity: ppm

Viscosity: 55.00 sec/qt

Cushion Volume: bbl

Water Loss: 8.29 in³

Gas Cushion Type:

Resistivity: ohm.m

Gas Cushion Pressure: psia

Salinity: 5100.00 ppm

Filter Cake: inches

Recovery Information

Recovery Table

Length ft	Description	Volume bbl
3.00	mud	0.042

Total Length: 3.00 ft Total Volume: 0.042 bbl

Num Fluid Samples: 0

Num Gas Bombs: 0

Serial #:

Laboratory Name:

Laboratory Location:

Recovery Comments:

Serial #: 6663

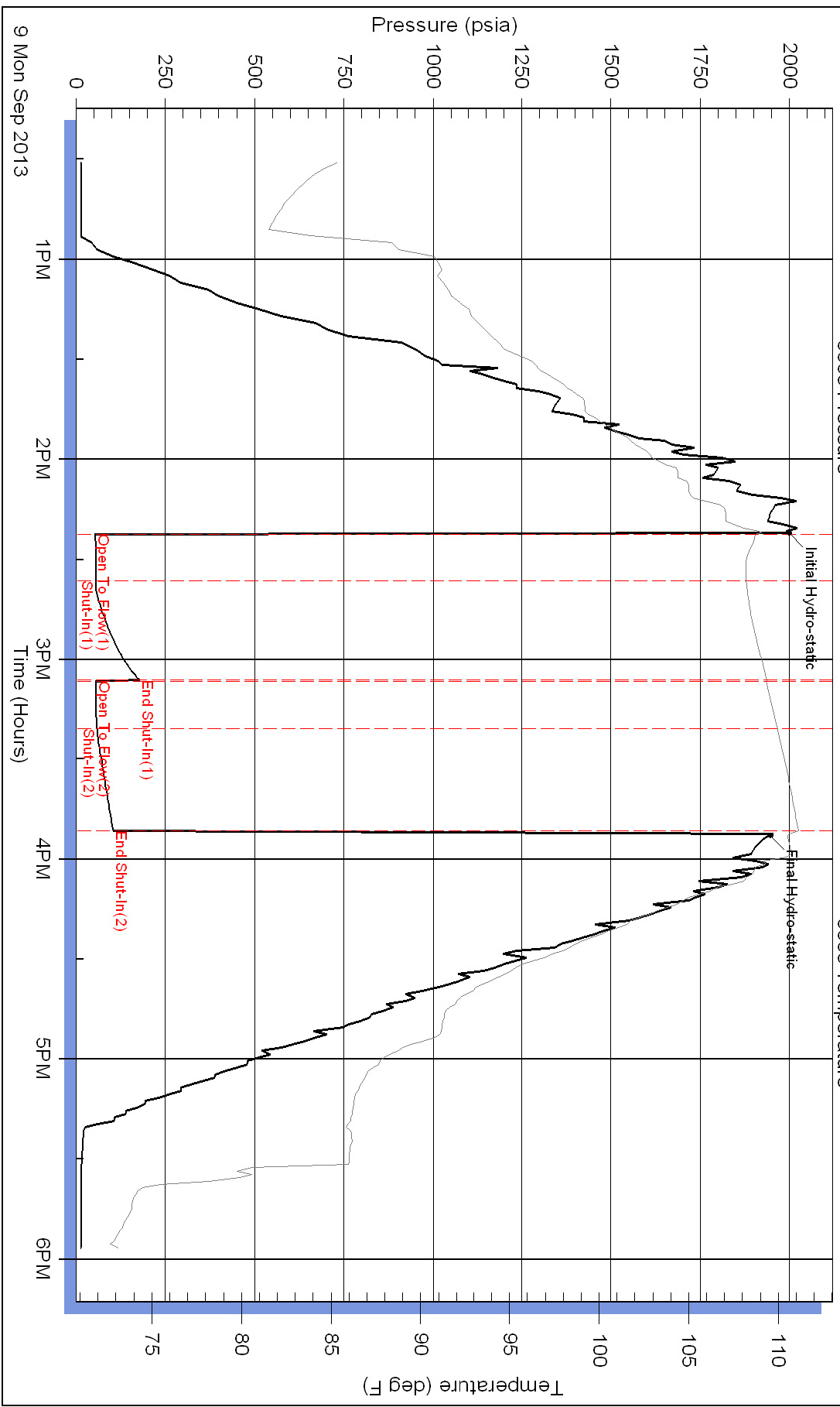
Inside

F.G.Holl Company LLC

Farthing #2-32

DST Test Number: 7

Pressure vs. Time



Superior Testers Enterprises LLC

Ref. No: 17088

Printed: 2013.09.09 @ 06:32:32

Pressure vs. Time

