

Carmen Schmitt, Inc.

Scale 1:240 Imperial

Well Name: Gosselin #1-22
Surface Location: 571' FNL and 1565' FEL
Bottom Location:
API: 15-163-24124-0000
License Number: 6569
Spud Date: 6/8/2013 Time: 2:45 PM
Region: Sec. 22 - T08S - R20W, Rooks County
Drilling Completed: 6/15/2013 Time: 3:25 AM
Surface Coordinates:
Bottom Hole Coordinates:
Ground Elevation: 2031.00ft
K.B. Elevation: 2036.00ft
Logged Interval: 2900.00ft To: 3620.00ft
Total Depth: 3620.00ft
Formation:
Drilling Fluid Type: Chemical/Fresh Water Gel

OPERATOR

Company: Carmen Schmitt, Inc.
Address: P.O. Box 47
Great Bend, KS 67530
Contact Geologist: Carmen Schmitt
Contact Phone Nbr: 620.793.5100
Well Name: Gosselin #1-22
Location: 571' FNL and 1565' FEL
Pool: API: 15-163-24124-0000
State: Kansas Field: Wildcat
Country: USA

LOGGED BY



Company: Valhalla Exploration, LLC
Address: 8100 E. 22nd St. North
Building 1800-2
Wichita, KS 67226
Phone Nbr: 316.655.3550
Logged By: Geologist Name: Derek W. Patterson

REMARKS

After review of the geologic report, open hole logs, and DST results, it was decided upon by operator to plug and abandon the Gosselin #1-22 as a dry hole. Said well was plugged on June 15, 2013.

The well samples were saved, submitted, and will be available for review at the Kansas Geologic Survey's Well Sample Library located in Wichita, KS.

Respectfully Submitted,

Derek W. Patterson

GENERAL INFORMATION

Service Companies

Drilling Contractor: Murfin Drilling Company - Rig #8
Tool Pusher: Rodney Farr
Daylight Driller: James Hale
Evening Driller: Travis Martin
Morning Driller: Ryan Hadley
Gas Detector: None

Drilling Fluid: Mud-Co/Service Mud
Engineer: Gary Schmidtberger

Logging Company: Pioneer Well Services
Engineer: Chris Desaire
Logs Ran: DI, CDNL, Micro, Sonic

Testing Company: Trilobite Testing
Tester: Brett Dickinson

| Deviation Survey | |
|------------------|--------|
| Depth | Survey |
| 218' | 3/4° |
| 3210' | 1° |
| 3620' | 1/2° |

| Pipe Strap | |
|------------|----------------------|
| Depth | Pipe Strap |
| 3210' | 3.21' Short to Board |

| Bit Record | | | | | | | | |
|------------|---------|-------|-------|---------------|----------|-----------|-------|-------|
| Bit # | Size | Make | Type | Serial Number | Depth In | Depth Out | Feet | Hours |
| 1 | 12 1/4" | HTCo. | MXC | 6050905 RT | 0' | 218' | 218' | 2.5 |
| 2 | 7 7/8" | HTCo. | GX20C | 5227217 RR | 218' | 3620' | 3402' | 65.5 |

| Surface Casing | |
|----------------|---|
| 6.8.2013 | Ran 5 joints of 23 #/ft 8 5/8" casing, tallying 210.38', set @ 218' KB. Cemented with 150 sacks Common(3% CC, 2% gel). Cement did circulate. Plug down @ 1930 hrs 6.8.13. By Quality. |

| Production Casing | |
|-------------------|--|
| | |

DAILY DRILLING REPORT

| Date | 0700 Hrs Depth | Previous 24 Hours of Operations |
|-----------|----------------------------|---|
| 6.11.2013 | 3163' | Geologist Derek W. Patterson depart Wichita for Gosselin #1-22, 2100 hrs 6.10.13. Geologist on location, 0035 hrs 6.11.13. Drilling and connections Permian beds and into Pennsylvanian beds. Displace mud system @ 2761'. Drilling and connections Topeka. Run 3 stand short trip to re-tally pipe @ 3062'. Resume drilling and connections Topeka. Made 933' over past 24 hrs of operations. WOB: 35-38k RPM: 80 PP: 650 SPM: 60 DMC: \$4,906.60 CMC: \$5,672.00 |
| 6.12.2013 | 3299' | Drilling and connections Topeka. CFS @ 3210' (Topeka - Plattsmouth). Shows warrant test. CTCH, conduct 20 stand short trip. CTCH, drop survey, strap out for DST #1, 1245 hrs 6.11.13. Rig up tester, make up tool, TIH with tool. Conducting DST #1, test successful. Rig lost volume while on bottom for test; make up tank and run into system. TIH with bit breaking circulation to try to repair loss of circulation zone. CTCH back on bottom. Resume drilling following DST #1, 0220 hrs 6.12.13. Drilling and connections Topeka, Heebner, and into Toronto. CFS @ 3260' (Toronto). Resume drilling and connections Toronto and into Lansing. CFS @ 3299' (LKC 'A'). Made 136' over past 24 hrs of operations. WOB: 38k RPM: 80 PP: 650 SPM: 60 DMC: \$2,649.70 CMC: \$8,321.70 |
| 6.13.2013 | 3430' | CFS @ 3299' (LKC 'A'). Resume drilling and connections Lansing. CFS @ 3318' (LKC 'B'). Resume drilling Lansing. CFS @ 3334' (LKC 'C'). Shows warrant test. CTCH, TOH for DST #2, 1200 hrs 6.12.13. Make up tool, TIH with tool. Conducting DST #2, test successful. TIH with bit, CTCH. Resume drilling following DST #2, 2235 hrs 6.12.13. Drilling and connections Lansing. CFS @ 3354' (LKC 'F'). Resume drilling and connections Lansing. CFS @ 3370' (LKC 'G'). Resume drilling and connections Lansing. CFS @ 3410' (LKC 'H'). Resume drilling and connections Lansing. CFS @ 3430' (LKC 'I'). Made 131' over past 24 hrs of operations. WOB: 38k RPM: 80 PP: 650 SPM: 60 DMC: \$1,703.35 CMC: \$10,025.05 |
| 6.14.2013 | 3488' | CFS @ 3430' (LKC 'I'). Resume drilling Lansing. CFS @ 3448' (LKC 'J'/Stark). Shows warrant test. CTCH, TOH for DST #3, 1000 hrs 6.13.13. Make up tool, TIH with tool. Conducting DST #3, test successful. TIH with bit, CTCH. Resume drilling following DST #3, 1900 hrs 6.13.13. Drilling and connections Lansing. CFS @ 3470' (LKC 'K'). Shows warrant test. CTCH, TOH for DST #4, 2150 hrs 6.13.13. Make up tool, TIH with tool. Conducting DST #4, test successful. TIH with bit, CTCH. Resume drilling following DST #4, 0545 hrs 6.14.13. Drilling and connections Lansing and into Base Kansas City. CFS @ 3488' (BKC). Made 58' over past 24 hrs of operations. WOB: 38k RPM: 80 PP: 650 SPM: 60 DMC: \$967.85 CMC: \$10,992.90 |
| 6.15.2013 | RTD - 3620' LTD - 3622' | CFS @ 3488' (BKC). Resume drilling and connections Base Kansas City, Marmaton, Basal Penn Conglomerate, and into Erosional Arbuckle. CFS @ 3544' (Arb). Shows warrant test. CTCH, TOH for DST #5, 1145 hrs 6.14.13. Make up tool, TIH with tool. Conducting DST #5, test successful. TIH with bit, CTCH. Resume drilling following DST #5, 2015 hrs 6.14.13. Drilling Erosional Arbuckle and into competent Arbuckle. CFS @ 3551' (Arb), CFS @ 3555' (Arb), CFS @ 3562' (Arb), CFS @ 3569' (Arb). Resume drilling and connections Arbuckle ahead to RTD of 3620'. |















RTD reached, 0325 hrs 6.15.13. CTCH, drop survey, TOH for open hole logging operations, 0515 hrs 6.15.13. Rig up loggers. Commence open hole logging operations.
 Made 132' over past 24 hrs of operations.
 WOB: 38k RPM: 80 PP: 650 SPM: 60
 DMC: \$441.95 CMC: \$11,434.85

6.16.2013 RTD - 3620' LTD - 3622' Conduct open hole logging operations. Decision made to run straddle test across Lansing 'F' zone. Make up tool, TIH with tool. Conducting DST #6, test successful. Orders received to plug and abandon the Gosselin #1-22 as a dry hole. Said well was plugged on 6.15.13. Geologist Derek W. Patterson off location, 1830 hrs 6.15.13. DMC: \$15.80 CMC: \$11,459.65

WELL COMPARISON SHEET

| Drilling Well | | | | | Comparison Well | | | | Comparison Well | | | |
|--|----------------|---------|------|---------|--|---------|----------------------------|-----|---|---------|----------------------------|-----|
| Carmen Schmitt - Gosselin #1-22 Sec. 22 - T08S - R20W 571' FNL & 1565' FEL | | | | | American Southern - Gosselin #1 Sec. 22 - T08S - R20W NE NE NE | | | | National Dev - Balthazor 'OWWO' #1 Sec. 22 - T08S - R20W NW NW SE | | | |
| 2036 KB | | | | | Dry 2030 KB | | Structural Relationship | | Dry 2013 KB | | Structural Relationship | |
| Formation | Sample | Sub-Sea | Log | Sub-Sea | Log | Sub-Sea | Sample | Log | Log | Sub-Sea | Sample | Log |
| Topeka | 3022 | -986 | 3021 | -985 | 3015 | -985 | -1 | 0 | 3000 | -987 | 1 | 2 |
| King Hill | 3118 | -1082 | 3117 | -1081 | 3110 | -1080 | -2 | -1 | 3095 | -1082 | 0 | 1 |
| Queen Hill | 3168 | -1132 | 3167 | -1131 | 3160 | -1130 | -2 | -1 | 3145 | -1132 | 0 | 1 |
| Heebner | 3224 | -1188 | 3224 | -1188 | 3217 | -1187 | -1 | -1 | 3203 | -1190 | 2 | 2 |
| Toronto | 3250 | -1214 | 3248 | -1212 | 3242 | -1212 | -2 | 0 | 3225 | -1212 | -2 | 0 |
| Lansing | 3264 | -1228 | 3264 | -1228 | 3258 | -1228 | 0 | 0 | 3241 | -1228 | 0 | 0 |
| LKC 'B' | 3305 | -1269 | 3304 | -1268 | 3298 | -1268 | -1 | 0 | 3282 | -1269 | 0 | 1 |
| LKC 'C' | 3324 | -1288 | 3322 | -1286 | 3317 | -1287 | -1 | 1 | 3299 | -1286 | -2 | 0 |
| LKC 'E' | 3337 | -1301 | 3338 | -1302 | 3332 | -1302 | 1 | 0 | 3317 | -1304 | 3 | 2 |
| LKC 'F' | 3345 | -1309 | 3346 | -1310 | 3340 | -1310 | 1 | 0 | 3324 | -1311 | 2 | 1 |
| LKC 'G' | 3356 | -1320 | 3358 | -1322 | 3353 | -1323 | 3 | 1 | 3333 | -1320 | 0 | -2 |
| Muncie Creek | 3385 | -1349 | 3384 | -1348 | 3378 | -1348 | -1 | 0 | 3360 | -1347 | -2 | -1 |
| LKC 'H' | 3397 | -1361 | 3396 | -1360 | 3391 | -1361 | 0 | 1 | 3373 | -1360 | -1 | 0 |
| LKC 'I' | 3418 | -1382 | 3418 | -1382 | 3413 | -1383 | 1 | 1 | 3394 | -1381 | -1 | -1 |
| LKC 'J' | 3435 | -1399 | 3433 | -1397 | 3430 | -1400 | 1 | 3 | 3412 | -1399 | 0 | 2 |
| Stark | 3448 | -1412 | 3447 | -1411 | 3442 | -1412 | 0 | 1 | 3425 | -1412 | 0 | 1 |
| LKC 'K' | 3460 | -1424 | 3458 | -1422 | 3452 | -1422 | -2 | 0 | 3434 | -1421 | -3 | -1 |
| Hushpuckney | 3467 | -1431 | 3467 | -1431 | 3461 | -1431 | 0 | 0 | 3444 | -1431 | 0 | 0 |
| LKC 'L' | 3476 | -1440 | 3475 | -1439 | 3472 | -1442 | 2 | 3 | 3456 | -1443 | 3 | 4 |
| Base Kansas City | 3487 | -1451 | 3485 | -1449 | 3480 | -1450 | -1 | 1 | 3462 | -1449 | -2 | 0 |
| Marmaton | 3515 | -1479 | 3516 | -1480 | 3513 | -1483 | 4 | 3 | 3494 | -1481 | 2 | 1 |
| Basal Penn Cglm | 3531 | -1495 | 3531 | -1495 | 3533 | -1503 | 8 | 8 | 3514 | -1501 | 6 | 6 |
| Shaley Arbuckle | 3539 | -1503 | 3545 | -1509 | 3542 | -1512 | 9 | 3 | Not Called | | | |
| Arbuckle | 3549 | -1513 | 3565 | -1529 | 3555 | -1525 | 12 | -4 | 3524 | -1511 | -2 | -18 |
| Precambrian | Not Penetrated | | | | 3776 | -1746 | N/A | | Not Penetrated | | | |
| Total Depth | 3620 | -1584 | 3622 | -1586 | 3840 | -1810 | 226 | 224 | 3580 | -1567 | -17 | -19 |

ROCK TYPES

| | | | | |
|--|---|---|--|--|
|  Congl |  DOL3 |  LMST3 |  SHALE CAR |  SHALE RED |
|  DOL1 |  LMST1 |  Ss |  SHALE GRN |  SHALE TEAL |
|  DOL2 |  LMST2 |  SHALE BRN |  SHALE GRA | |

ACCESSORIES

MINERAL

∟ Dolomitic
 P Pyrite
 * Sandy
 .. Silty
 △ Chert White

FOSSIL

F Fossils < 20%
 φ Oolite
 ⚙ Oomoldic










STRINGER

■ Limestone1
 ■ Limestone3
 ■ Shale Gray
 ■ Shale Red

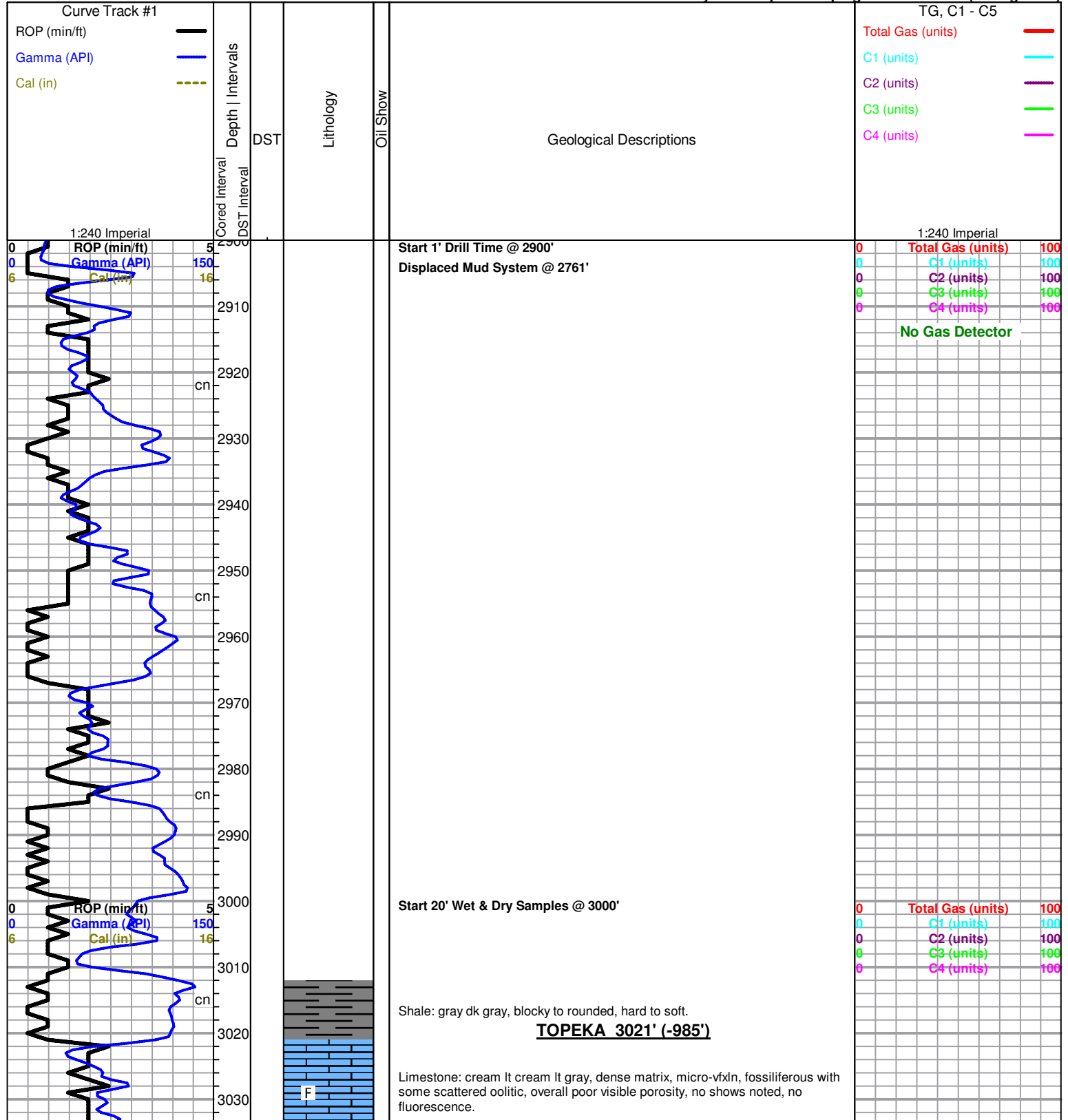
TEXTURE

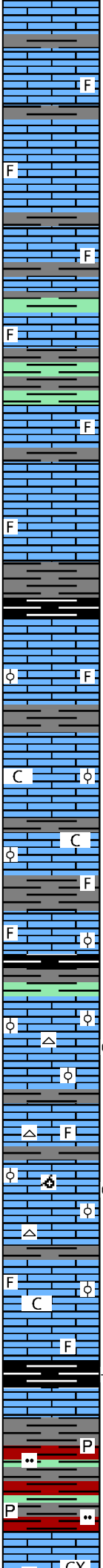
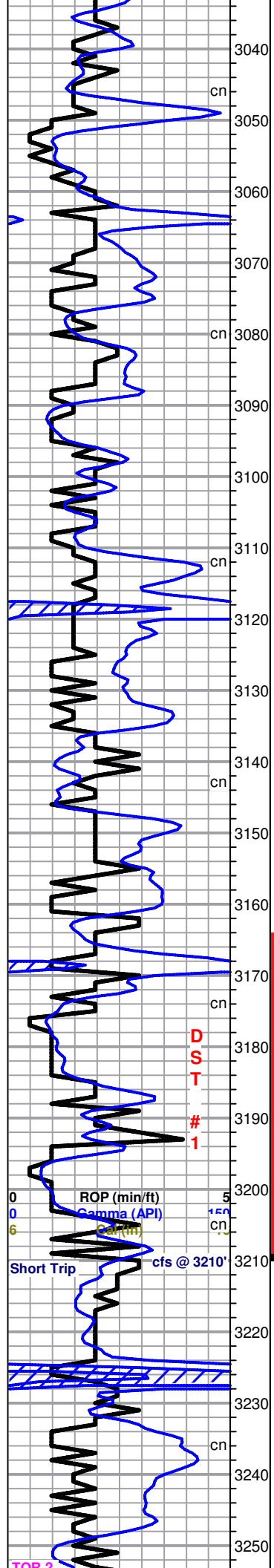
C Chalky
 CX Cryptocrystalline

OTHER SYMBOLS

- MISC**
-  Daily Report
 -  Digital Photo
 -  Document
 -  Folder
 -  Link
 -  Vertical Log File
 -  Horizontal Log File
 -  Core Log File
 -  Drill Cuttings Rpt

- DST**
-  DST1
 -  DST2
 -  DST3
 -  Core
 -  tail pipe





Limestone: cream lt gray gray, dense tight matrix, microxln, fossiliferous, poor visible porosity, no shows noted, no fluorescence.

Limestone: lt cream cream tan, softer sub-friable matrix, micro-vfxln, scattered poor oolitic to sub-fossiliferous, fair interxln porosity, no shows noted, no fluorescence.

Limestone: cream gray, dense tight matrix, microxln, sub-fossiliferous to barren, poor visible porosity, no shows noted, no fluorescence, with fair amount of interbedded Shale: gray dk gray dk green, rounded and soft, fissile to platy, some limey.

Limestone: cream lt cream, dense matrix, micro-vfxln, fair amount of oolitic/fossiliferous material, poor visible porosity, no shows noted, no fluorescence.

KING HILL 3117' (-1081')

Shale: black, carbonaceous, blocky to rounded, most soft to waxy, no gas show.

Limestone: lt cream cream lt tan, sub-friable matrix, vf-fxln, most heavily oolitic to fossiliferous, fair-good interfossiliferous porosity throughout, no shows noted, very poor-no mineral fluorescence.

Limestone: off white lt cream, softer sub-chalky matrix, micro-vfxln, sub-oolitic to barren, few pieces with fair-good interxln/pinpoint porosity, fair-poor saturated stain in those with porosity, no live shows noted, very poor spotty fluorescence, no cut, no odor.

Start 10' Wet & Dry Samples @ 3150'

Limestone: lt cream off white lt gray, dense matrix, vf-fxln, heavily oolitic/fossiliferous, fair-good interfossiliferous porosity, no shows noted, poor-no mineral fluorescence, no odor, with interbedded Shale: gray dk gray, blocky to rounded, mostly soft.

QUEEN HILL 3167' (-1131')

Shale: trace black, carbonaceous, blocky to rounded, soft and waxy, with Shale: gray dk gray lt green, blocky to rounded, hard to soft.

Limestone: off white lt cream, friable matrix, vfxln, heavily oolitic, good interoolitic/pinpoint porosity, scattered pieces with fair saturated stain and poor-fair show stringy heavy dk brown oil upon break, spotty lt yellow fluorescence, poor-fair bluish-white cut, faint odor, with scattered Chert: gray cream, opaque, fresh and sharp, sub-fossiliferous to barren, no shows noted.

Limestone: cream lt cream lt gray, dense tight matrix, micro-vfxln, sub-fossiliferous, poor visible porosity, no shows noted, no fluorescence, with continued Chert.

3210' cfs - Limestone: tan lt brown, dense matrix, vfxln, heavily oolitic with some scattered poor oomoldic development, good interoolitic/pinpoint porosity, 2ndary xln fill in porosity, even brown saturated stain, fair show heavy dk brown oil from porosity with slight increase upon break, spotty lt yellow fluorescence, milky-white cut, faint odor, with scattered Chert.

Limestone: gray lt gray some cream mottled, dense sub-chalky matrix, microxln, fossiliferous/oolitic in part, poor visible porosity, no shows noted, no fluorescence.

HIEBNER 3224' (-1188')

Shale: black, carbonaceous, dense and firm, some slightly waxy and soft, good show gas with increase upon break.

Shale: gray dk gray brick red dk green, blocky to rounded, mostly firm and hard with some softer and waxy, silty/pyritic in part.

TORONTO 3248' (-1212')

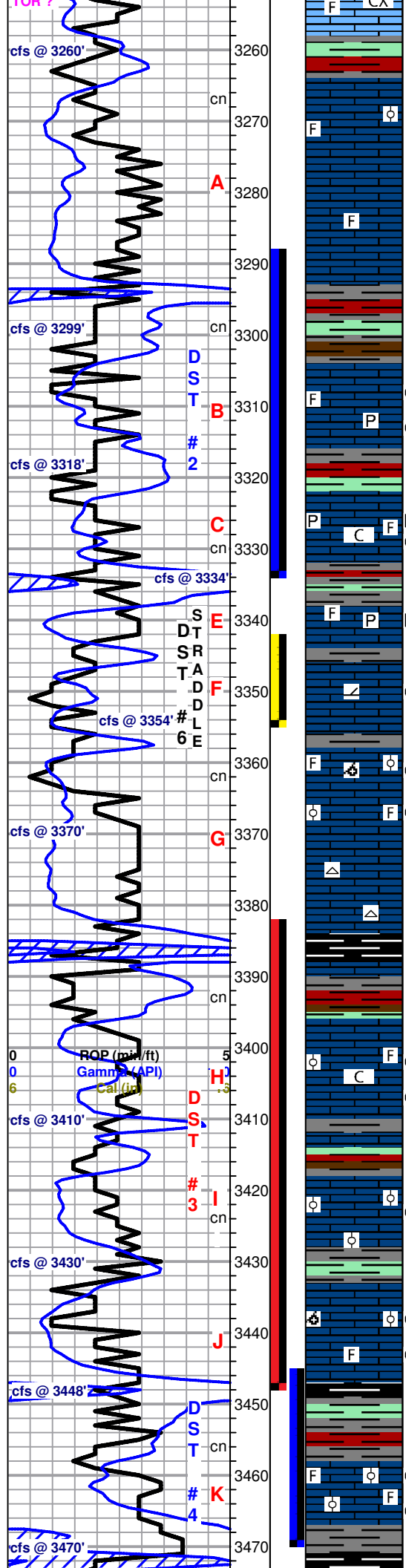
3260' cfs - Limestone: lt gray white lt cream, dense tight matrix, micro-xln, mostly barren with some scattered sub-fossiliferous, poor visible porosity, no shows noted, no fluorescence.

Mud-Co Mud Ck @ 3145'
 0605 hrs 6.11.13
 Vis: 50 Wt: 8.9
 PV: 12 YP: 20
 WL: 6.8
 Cake: 1/32nd
 pH: 11.5
 CHL: 1,200 ppm
 Cal: Nil
 Solids: 4.3
 LCM: 2 #/bbl
 DMC: \$2,649.70
 CMC: \$8,321.70

DST #1.bmp

Vis: 61
 Wt: 9.0
 LCM: 4 #/bbl

| | | |
|---|-------------------|-----|
| 0 | Total Gas (units) | 100 |
| 0 | C1 (units) | 100 |
| 0 | C2 (units) | 100 |
| 0 | C3 (units) | 100 |
| 0 | C4 (units) | 100 |



LANSING 3264' (-1228')

Limestone: cream lt gray, dense tight matrix, micro-vfxln, sub-oolitic/fossiliferous grading to fossiliferous, poor interxln to fair interfossiliferous porosity, no shows noted, poor dull white mineral fluorescence.

Limestone: cream lt cream off white, dense tight matrix, micro-cryptoxln, mostly barren with some scattered sub-fossiliferous, poor-no visible porosity, fair amount of 2ndary xln fill and along edges, no shows noted, very poor dull white mineral fluorescence, with Chert: white bone white, opaque, fresh and sharp, barren.

3299' cfs - Shale: gray dk gray dk red dk green some brown, blocky and hard, some limy in part, scattered splintery material, sample washes dk reddish-brown.

3318' cfs - Limestone: off white lt cream, friable to dense matrix, f-vfxln, most fossiliferous, pyritic in part, scattered good interxln/micro vug porosity, spotty saturated stain, poor show brown oil with slight increase upon break, even-spotty dull yellow fluorescence, bluish-white to milky-white cut, no odor.

Limestone: lt cream lt gray, dense tight matrix, micro-vfxln, barren, poor visible porosity, no shows noted, no fluorescence.

3334' cfs - Limestone: lt cream cream off white, dense sub-chalky matrix, vf-fxln, most fossiliferous, pyritic in part, fair-good interxln/interfossiliferous porosity with some poor-no visible porosity, most carrying fair edge stain (some dead), poor-fair show brown oil in porosity with increase upon break/under lamp, spotty dull yellow fluorescence, bluish-white cut, no odor.

Limestone: off white lt cream, mostly dense matrix, micro-vfxln, sub-fossiliferous, poor visible porosity, few scattered pieces with dead tarry stain along edges, no live shows noted, poor fluorescence, little-no cut, no odor, with loose Pyrite nodules.

3354' cfs 40"/60" - Limestone: lt tan cream, friable dolomitic matrix, vf-fxln, most barren, fair-good interxln porosity, fair golden spotty-even saturated stain, very poor show live oil upon break in a couple of pieces, poor spotty lt yellow fluorescence, poor bluish-white cut, no odor.

3370' cfs - Limestone: off white lt cream, mostly dense matrix, vfxln, oolitic/fossiliferous, fair-good interoolitic/vuggy/trace oomoldic porosity throughout, spotty-even lt brown saturated stain, very poor show lt brown oil upon break in few pieces, poor dull whitish-yellow fluorescence, poor bluish-white cut, no odor, grading to Limestone: cream lt cream, dense tight matrix, vfxln, oolitic/fossiliferous in part, decrease in visible porosity and staining from above, no live shows noted, poor fluorescence, no cut, no odor.

Limestone: lt gray lt cream white, dense tight cherty matrix, micro-cryptoxln, barren, very cherty, no visible porosity, no shows noted, no fluorescence, no odor.

MUNCIE CREEK 3384' (-1348')

Shale: black, carbonaceous, mostly rounded and soft, some waxy, fair gas show upon break.

Shale: gray dk gray brick red some brown dk green, blocky to rounded, mostly soft.

3410' cfs - Limestone: cream lt tan lt cream, slightly chalky dense tight matrix, micro-vfxln, most micro fossiliferous/oolitic, overall poor visible porosity with some scattered fair pinpoint, scattered spotty brown stain, no live shows noted, poor whitish-yellow fluorescence, poor-no cut, no odor.

Shale: gray dk gray brick red dk green dk brown, blocky to rounded, mostly soft, some splintery material.

3430' cfs - Limestone: off white white, dense to sub-friable matrix, vfxln, heavily oolitic compact, fair interoolitic porosity with abundant 2ndary xln fill between oolites, even to spotty saturated stain in porosity, some dead tarry gilsonitic staining, poor-fair show free oil upon break/left under lamp, dull lt yellow fluorescence, yellowish-white cut, faint gassy odor.

3448' cfs - Limestone: tan cream, friable matrix, vfxln, oolitic with excellent small oomoldic dev/porosity, 2ndary xln within porosity, even brown saturated stain, good show free oil upon break, even bright lt yellow fluorescence, milky-white cut, grading to Limestone: cream, dense matrix, micro-vfxln, sub-fossiliferous, scattered pinpoint porosity, even to spotty brown saturated stain, fair-poor show upon break, continued fluorescence and cut, faint odor.

STARK 3447' (-1411')

Shale: black dk gray, carbonaceous in part, with Shale: gray dk gray dk green brick red, blocky and hard, fair amount of splintery material.

Limestone: off white lt cream, dense/brittle matrix, vfxln, heavily compact fossiliferous/oolitic, fair interfossiliferous porosity with abundant 2ndary xln, free oil in tray, brown saturated stain, fair-good show brown oil upon break, spotty-even bright lt yellow fluorescence, milky-white cut, no odor.

HUSHPUCKNEY 3467' (-1431')

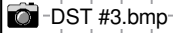
Shale: gray dk gray, blocky, mostly firm and hard, splintery/fissile in part, grading to Shale: black, carbonaceous and Shale: gray dk gray dk green.

Mud-Co Mud Ck @ 3285'
0618 hrs 6.12.13
Vis: 61 Wt: 8.9
PV: 15 YP: 29
WL: 6.8
Cake: 1/32nd
pH: 10.5
CHL: 1,900 ppm
Cal: Tr
Solids: 4.3
LCM: 4 #/bbl
DMC: \$1,703.35
CMC:
\$10,025.05

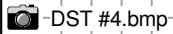


Vis: 59
Wt: 9.0
LCM: 4+ #/bbl

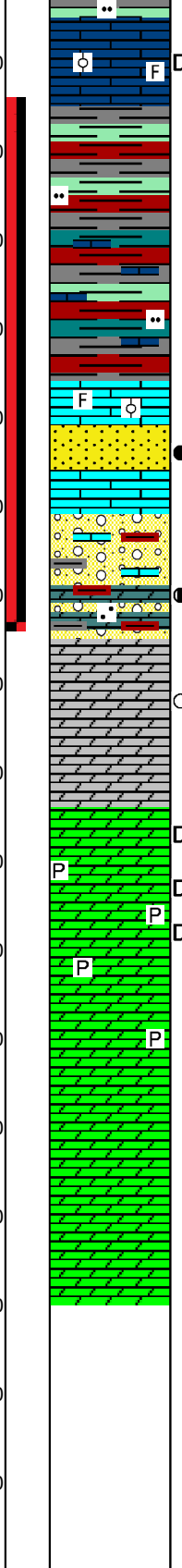
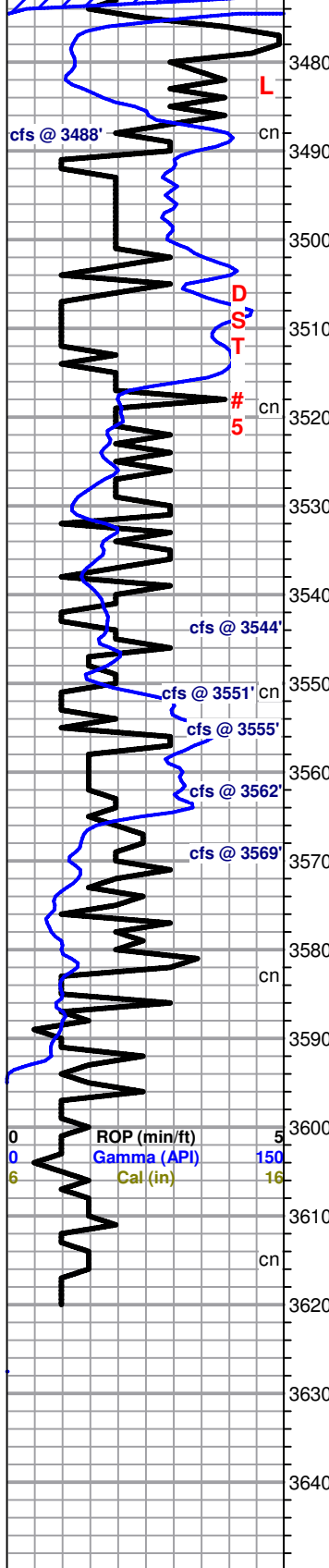
| | | |
|---|-------------------|-----|
| 0 | Total Gas (units) | 100 |
| 0 | C1 (units) | 100 |
| 0 | C2 (units) | 100 |
| 0 | C3 (units) | 100 |
| 0 | C4 (units) | 100 |



Mud-Co Mud Ck @ 3430'
0715 hrs 6.13.13
Vis: 50 Wt: 9.0
PV: 16 YP: 24
WL: 7.2
Cake: 1/32nd
pH: 7.2
CHL: 1,900 ppm
Cal: Tr
Solids: 4.9
LCM: 4 #/bbl
DMC: \$967.85
CMC: \$10,992.90



Vis: 52
Wt: 9.0
LCM: 5 #/bbl



3488' cfs - Limestone: cream lt cream lt gray, dense tight matrix, vfxln, most fossiliferous/oolitic, poor visible porosity, few pieces with poor dead black stain along edge, no live shows noted, no fluorescence, no cut, no odor.

BASE KANSAS CITY 3485' (-1449')

Shale: gray dk gray dk green brick red, most blocky and firm, abundant splintery/fissile material, some silty in part, sample washes reddish-brown.

Shale: gray dk gray dk green teal brick red, most blocky and firm, abundant splintery/fissile material, some silty in part, with Limestone stringers: white lt cream, dense matrix, microxln, fossiliferous/oolitic to barren, no visible porosity, no shows noted, no fluorescence, sample washes reddish-brown.

MARMATON 3516' (-1480')

Limestone: off white lt cream, dense tight matrix, micro-vfxln, most fossiliferous/oolitic, poor visible porosity, no shows noted, poor fluorescence.

Sandstone: tan, sub-friable calcareous matrix, vfgrained, well sorted and fairly cemented, fair-good intergranular porosity, even saturated stain, good show lt brown oil, even bright lt yellow fluorescence, milky-white cut, no odor.

3544' cfs - Conglomerate: mixed Shale, Clay, Limestone, and Dolomite: off white lt cream, mostly dense matrix, vf-coarsexln, good rhombic dev, arenaceous in part, fair-good interxln/vuggy porosity, good dk saturated stain in porosity, good show heavy oil upon break, even lt yellow fluorescence, milky-white cut, no odor.

REWORKED ARBUCKLE 3545' (-1509')

3551' cfs/3555' cfs - Dolomite: white lt pink, dense tight matrix, f-coarsexln, poor rhombic dev, poor porosity, trace lt brown stain, no live shows noted, even bright white fluorescence, poor-no cut, no odor.

3562' cfs (3558'-3564') - Dolomite: lt cream off white, mostly dense tight matrix, f-coarsexln, slight inc in xln dev and associated porosity, no shows noted, even whitish-yellow fluorescence, no cut, no odor.

ARBUCKLE 3565' (-1529')

3569' cfs (3565'-3569') - Dolomite: still carrying predominately same as above, a few pieces of Dolomite: white, dense matrix, f-coarsexln, poor rhombic dev, poor interxln-fair vuggy porosity, couple of pieces with dead tarry stain, no live shows noted, even dull lt yellow fluorescence, fair cut, no odor (may be from uphole reworked section).

(3572'-3580') - INFLUX Dolomite: white, dense to slightly friable matrix, vf-coarsexln, most pyritic, scattered good rhombic dev and associated porosity with some vuggy porosity, most carrying heavy dk black dead tarry stain, no live shows noted, dull lt yellow fluorescence, white cut, no odor.

(3581'-3592') - INFLUX Dolomite: lt cream cream, dense matrix, vf-fxln with some scattered coarsexln, pyritic in part, fair-good rhombic dev and associated porosity, no shows noted, dull white mineral fluorescence, no cut, no odor.

(3593'-3606') - Dolomite: lt cream cream, dense matrix, vf-fxln with some scattered coarsexln, pyritic in part, fair-good rhombic dev and associated fair porosity, some scattered small vugs, no shows noted, dull white mineral fluorescence, no cut no odor.

(3607'-3620') - Dolomite: lt cream cream, dense matrix, vf-fxln with some scattered coarsexln, fair-good rhombic dev and associated fair porosity, some scattered small vugs, no shows noted, dull white mineral fluorescence, no cut no odor.

LTD 3622' (-1586')

RTD 3620' (-1584')

Orders Received To Plug and Abandon Well As A Dry Hole

Geologist Derek W. Patterson Off Location, 1830 hrs 6.15.13

Respectfully Submitted,
Derek W. Patterson

Mud-Co Mud Ck @ 3485'
0635 hrs 6.14.13
Vis: 53 Wt: 9.0
PV: 15 YP: 21
WL: 7.6
Cake: 1/32nd
pH: 10.5
CHL: 1,800 ppm
Cal: Tr
Solids: 4.9
LCM: 4 #/bbl
DMC: \$441.95
CMC: \$11,434.85

DST #5.bmp

Vis: 56
Wt: 9.0
LCM: 4 #/bbl

| | | |
|---|-------------------|-----|
| 0 | Total Gas (units) | 100 |
| 0 | C1 (units) | 100 |
| 0 | C2 (units) | 100 |
| 0 | C3 (units) | 100 |
| 0 | C4 (units) | 100 |

Mud-Co Mud Ck @ 3620'
0630 hrs 6.15.13
Vis: 56 Wt: 9.1
PV: 14 YP: 25
WL: 7.6
Cake: 1/32nd
pH: 10.5
CHL: 1,800 ppm
Cal: 20 ppm
Solids: 5.7
LCM: 4 #/bbl
DMC: \$15.80
CMC:

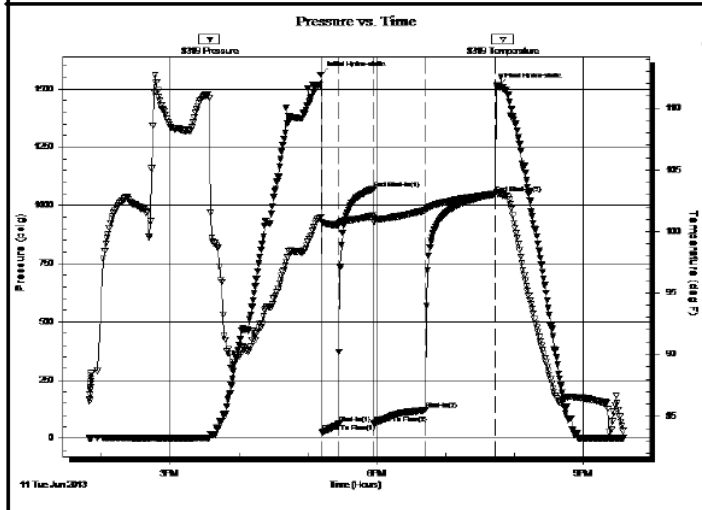
| | | |
|--|--|---|
|  TRILOBITE TESTING, INC | DRILL STEM TEST REPORT | |
| | Carmen Schmitt, Inc. PO Box 47 GreatBend KS 67530 ATTN: Derek Patterson | 22-8s-20w, Rooks, KS Gosselin #1-22 Job Ticket: 53895 DST#: 1 Test Start: 2013.06.11 @ 13:50:00 |

GENERAL INFORMATION:

| | |
|---|---|
| Formation: Topeka | Test Type: Conventional Bottom Hole (Initial) |
| Deviated: No Whipstock: ft (KB) | Tester: Brett Dickinson |
| Time Tool Opened: 17:12:30 | Unit No: 59 |
| Time Test Ended: 21:34:30 | Reference Elevations: 2036.00 ft (KB) |
| Interval: 3164.00 ft (KB) To 3210.00 ft (KB) (TVD) | 2031.00 ft (CF) |
| Total Depth: 3210.00 ft (KB) (TVD) | KB to GR/CF: 5.00 ft |
| Hole Diameter: 7.88 inches Hole Condition: Fair | |

| | | | | | |
|---|------------------------|------------|-------------------------------------|--|--|
| Serial #: 8319 | Outside | | | | |
| Press@RunDepth: 121.86 psig @ 3165.00 ft (KB) | Capacity: 8000.00 psig | | | | |
| Start Date: 2013.06.11 | End Date: 2013.06.11 | 2013.06.11 | Last Calib.: 2013.06.11 | | |
| Start Time: 13:50:05 | End Time: 21:34:29 | 21:34:29 | Time On Btm: 2013.06.11 @ 17:11:30 | | |
| | | | Time Off Btm: 2013.06.11 @ 19:45:30 | | |

TEST COMMENT: IF-3in blow
 IS-No blow
 FF-4in blow
 FSI-No blow



| PRESSURE SUMMARY | | | |
|------------------|-----------------|--------------|----------------------|
| Time (Min.) | Pressure (psig) | Temp (deg F) | Annotation |
| 0 | 1560.07 | 101.13 | Initial Hydro-static |
| 1 | 23.61 | 100.76 | Open To Flow (1) |
| 16 | 60.58 | 100.55 | Shut-In(1) |
| 46 | 1070.33 | 101.26 | End Shut-In(1) |
| 47 | 62.89 | 100.74 | Open To Flow (2) |
| 91 | 121.86 | 101.70 | Shut-In(2) |
| 152 | 1049.10 | 103.06 | End Shut-In(2) |
| 154 | 1511.48 | 103.10 | Final Hydro-static |

| Recovery | | |
|-------------|-----------------|--------------|
| Length (ft) | Description | Volume (bbl) |
| 125.00 | Water | 0.89 |
| 80.00 | MCW 30%M 70%W | 0.70 |
| 15.00 | Oil Spotted Mud | 0.21 |
| | | |
| | | |

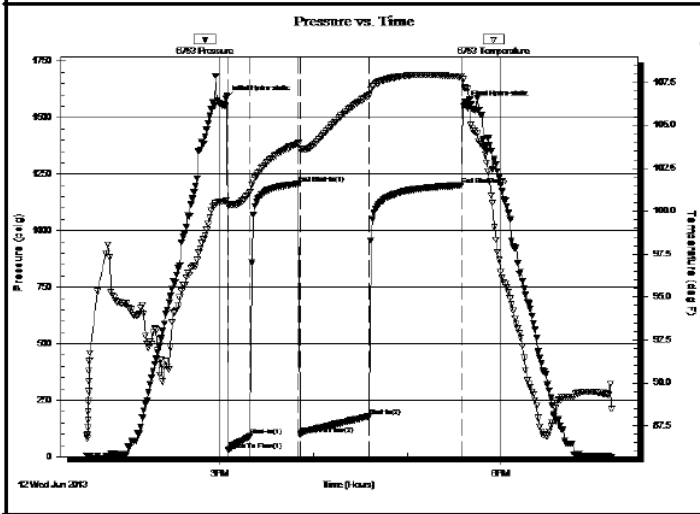
| Gas Rates | | | |
|-----------|----------------|-----------------|------------------|
| | Choke (inches) | Pressure (psig) | Gas Rate (Mcf/d) |
| | | | |

| | | |
|---|--|--|
|  <p style="font-size: 2em; font-weight: bold; margin: 0;">TRILOBITE TESTING, INC</p> | DRILL STEM TEST REPORT | |
| | <table style="width:100%; border: none;"> <tr> <td style="width:50%; border: none;"> Carmen Schmitt, Inc. PO Box 47 GreatBend KS 67530 ATTN: Derek Patterson </td> <td style="width:50%; border: none; text-align: right;"> 22-8s-20w, Rooks, KS Gosselin #1-22 Job Ticket: 53896 DST#: 2 Test Start: 2013.06.12 @ 13:35:00 </td> </tr> </table> | Carmen Schmitt, Inc. PO Box 47 GreatBend KS 67530 ATTN: Derek Patterson |
| Carmen Schmitt, Inc. PO Box 47 GreatBend KS 67530 ATTN: Derek Patterson | 22-8s-20w, Rooks, KS Gosselin #1-22 Job Ticket: 53896 DST#: 2 Test Start: 2013.06.12 @ 13:35:00 | |

GENERAL INFORMATION:

| | |
|---|---|
| Formation: KC "B,C" Deviated: No Whipstock: ft (KB) Time Tool Opened: 15:05:30 Time Test Ended: 19:11:00 Interval: 3288.00 ft (KB) To 3334.00 ft (KB) (TVD) Total Depth: 3334.00 ft (KB) (TVD) Hole Diameter: 7.88 inches Hole Condition: Fair | Test Type: Conventional Bottom Hole (Reset) Tester: Brett Dickinson Unit No: 59 Reference Elevations: 2036.00 ft (KB) 2031.00 ft (CF) KB to GR/CF: 5.00 ft |
|---|---|

| | |
|--|--|
| Serial #: 6753 Inside Press@RunDepth: 178.11 psig @ 3289.00 ft (KB) Start Date: 2013.06.12 End Date: 2013.06.12 Start Time: 13:35:05 End Time: 19:10:59 | Capacity: 8000.00 psig Last Calib.: 2013.06.12 Time On Btm: 2013.06.12 @ 15:04:00 Time Off Btm: 2013.06.12 @ 17:37:00 |
| <p>TEST COMMENT: IF-5in blow ISI-No blow FF-BOB in 38min FSI-No blow</p> | |



| PRESSURE SUMMARY | | | |
|------------------|-----------------|--------------|----------------------|
| Time (Min.) | Pressure (psig) | Temp (deg F) | Annotation |
| 0 | 1585.16 | 100.59 | Initial Hydro-static |
| 2 | 26.58 | 100.28 | Open To Flow (1) |
| 16 | 91.28 | 101.12 | Shut-In(1) |
| 47 | 1207.23 | 103.94 | End Shut-In(1) |
| 48 | 100.25 | 103.62 | Open To Flow (2) |
| 92 | 178.11 | 106.74 | Shut-In(2) |
| 151 | 1200.69 | 107.83 | End Shut-In(2) |
| 153 | 1557.68 | 107.16 | Final Hydro-static |

| Recovery | | |
|-------------|----------------|--------------|
| Length (ft) | Description | Volume (bbl) |
| 185.00 | Water | 1.31 |
| 120.00 | SMCW 85%W 15%M | 1.68 |
| 15.00 | MCW 60%W 40%M | 0.21 |
| | | |
| | | |

* Recovery from multiple tests

| Gas Rates | | | |
|-----------|----------------|-----------------|------------------|
| | Choke (inches) | Pressure (psig) | Gas Rate (Mcf/d) |
| | | | |

| | |
|---|---|
|  TRILOBITE TESTING, INC | <h2 style="margin: 0;">DRILL STEM TEST REPORT</h2> <p>Carmen Schmitt, Inc. 22-8s-20w, Rooks, KS</p> <p>PO Box 47 Gosselin #1-22</p> <p>GreatBend KS 67530 Job Ticket: 53897 DST#: 3</p> <p>ATTN: Derek Patterson Test Start: 2013.06.13 @ 11:20:00</p> |
|---|---|

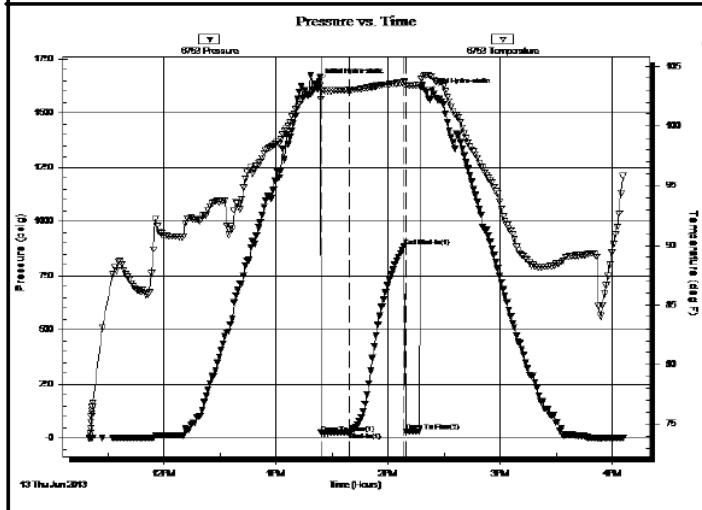
GENERAL INFORMATION:

| | |
|---|---|
| Formation: KC"H-J" | Test Type: Conventional Bottom Hole (Reset) |
| Deviated: No Whipstock: ft (KB) | Tester: Brett Dickinson |
| Time Tool Opened: 13:24:00 | Unit No: 59 |
| Time Test Ended: 16:05:30 | Reference Elevations: 2036.00 ft (KB) |
| Interval: 3382.00 ft (KB) To 3448.00 ft (KB) (TVD) | 2031.00 ft (CF) |
| Total Depth: 3448.00 ft (KB) (TVD) | KB to GR/CF: 5.00 ft |
| Hole Diameter: 7.88 inches Hole Condition: Fair | |

Serial #: 6753 Inside

| | |
|--|-------------------------------------|
| Press@RunDepth: 28.45 psig @ 3383.00 ft (KB) | Capacity: 8000.00 psig |
| Start Date: 2013.06.13 End Date: 2013.06.13 | Last Calib.: 2013.06.13 |
| Start Time: 11:20:05 End Time: 16:05:29 | Time On Btm: 2013.06.13 @ 13:23:00 |
| | Time Off Btm: 2013.06.13 @ 14:20:30 |

TEST COMMENT: IF-1/2in blow
 IS-No blow
 FF-Very weak surface blow

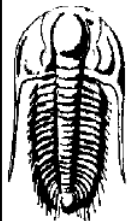


| PRESSURE SUMMARY | | | |
|------------------|-----------------|--------------|----------------------|
| Time (Min.) | Pressure (psig) | Temp (deg F) | Annotation |
| 0 | 1643.61 | 103.23 | Initial Hydro-static |
| 1 | 25.36 | 102.24 | Open To Flow (1) |
| 16 | 28.45 | 103.05 | Shut-In(1) |
| 46 | 883.72 | 103.67 | End Shut-In(1) |
| 47 | 31.05 | 103.42 | Open To Flow (2) |
| 58 | 1598.87 | 104.27 | Final Hydro-static |

| Recovery | | |
|-------------|----------------|--------------|
| Length (ft) | Description | Volume (bbl) |
| 5.00 | VSOCM 2%O 98%M | 0.04 |
| | | |
| | | |
| | | |
| | | |

* Recovery from multiple tests

| Gas Rates | | | |
|-----------|----------------|-----------------|------------------|
| | Choke (inches) | Pressure (psig) | Gas Rate (Mcf/d) |
| | | | |



TRILOBITE TESTING, INC

DRILL STEM TEST REPORT

Carmen Schmitt, Inc.

22-8s-20w, Rooks, KS

PO Box 47
GreatBend KS 67530

Gosselin #1-22

Job Ticket: 53898

DST#: 4

ATTN: Derek Patterson

Test Start: 2013.06.13 @ 23:15:00

GENERAL INFORMATION:

Formation: **KC "K"**

Deviated: No Whipstock: ft (KB)

Time Tool Opened: 00:54:30

Time Test Ended: 03:14:00

Test Type: Conventional Bottom Hole (Reset)

Tester: Brett Dickinson

Unit No: 59

Interval: 3445.00 ft (KB) To 3470.00 ft (KB) (TVD)

Reference Elevations: 2036.00 ft (KB)

Total Depth: 3470.00 ft (KB) (TVD)

2031.00 ft (CF)

Hole Diameter: 7.88 inches Hole Condition: Fair

KB to GR/CF: 5.00 ft

Serial #: 6753

Inside

Press@RunDepth: 18.69 psig @ 3446.00 ft (KB)

Capacity: 8000.00 psig

Start Date: 2013.06.13

End Date: 2013.06.14

Last Calib.: 2013.06.14

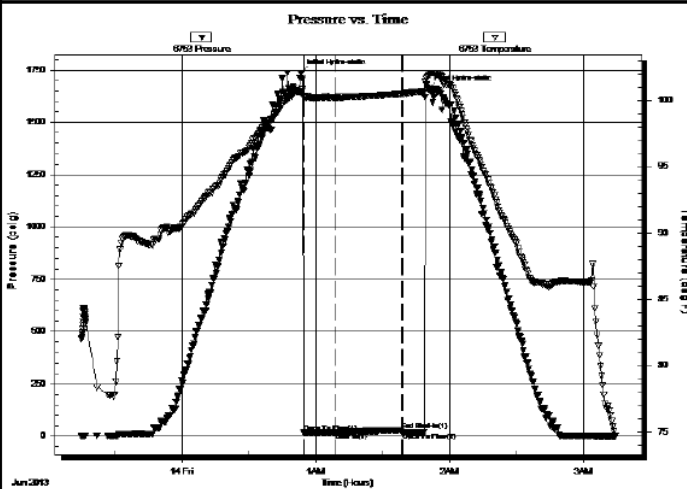
Start Time: 23:15:05

End Time: 03:14:00

Time On Btm: 2013.06.14 @ 00:53:30

Time Off Btm: 2013.06.14 @ 01:50:30

TEST COMMENT: IF-Very weak surface blow
ISI-No blow
FF-No blow



PRESSURE SUMMARY

| Time (Min.) | Pressure (psig) | Temp (deg F) | Annotation |
|-------------|-----------------|--------------|----------------------|
| 0 | 1736.35 | 100.64 | Initial Hydro-static |
| 1 | 18.23 | 100.26 | Open To Flow (1) |
| 16 | 18.69 | 100.23 | Shut-In(1) |
| 45 | 29.28 | 100.48 | End Shut-In(1) |
| 46 | 18.82 | 100.48 | Open To Flow (2) |
| 57 | 1659.16 | 101.86 | Final Hydro-static |

Recovery

| Length (ft) | Description | Volume (bbl) |
|-------------|----------------|--------------|
| 2.00 | Oilspotted Mud | 0.01 |
| | | |
| | | |
| | | |
| | | |

Gas Rates

| Choke (inches) | Pressure (psig) | Gas Rate (Mcf/d) |
|----------------|-----------------|------------------|
| | | |

* Recovery from multiple tests

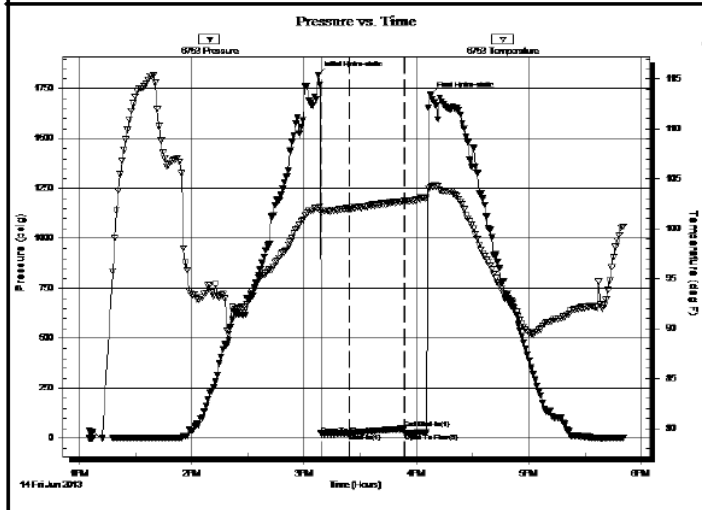
| | | |
|--|--|---|
|  TRILOBITE TESTING, INC | DRILL STEM TEST REPORT | |
| | Carmen Schmitt, Inc. PO Box 47 GreatBend KS 67530 ATTN: Derek Patterson | 22-8s-20w, Rooks, KS Gosselin #1-22 Job Ticket: 53899 DST#: 5 Test Start: 2013.06.14 @ 13:05:00 |

GENERAL INFORMATION:

| | |
|---|---|
| Formation: Cong Sd/ Arbuckle | Test Type: Conventional Bottom Hole (Reset) |
| Deviated: No Whipstock: ft (KB) | Tester: Brett Dickinson |
| Time Tool Opened: 15:09:00 | Unit No: 59 |
| Time Test Ended: 17:51:00 | Reference Elevations: 2036.00 ft (KB) |
| Interval: 3484.00 ft (KB) To 3584.00 ft (KB) (TVD) | 2031.00 ft (CF) |
| Total Depth: 3544.00 ft (KB) (TVD) | KB to GR/CF: 5.00 ft |
| Hole Diameter: 7.88 inches Hole Condition: Fair | |

| | | |
|--|------------------------|-------------------------------------|
| Serial #: 6753 | Inside | Capacity: 8000.00 psig |
| Press@RunDepth: 24.63 psig @ 3485.00 ft (KB) | Start Date: 2013.06.14 | End Date: 2013.06.14 |
| Start Time: 13:05:05 | End Time: 17:50:59 | Time On Btm: 2013.06.14 @ 15:07:30 |
| | | Time Off Btm: 2013.06.14 @ 16:07:30 |

TEST COMMENT: IF-Very weak surface blow died in 12min
 IS-No blow
 FF-No blow flush tool No blow



| PRESSURE SUMMARY | | | |
|------------------|-----------------|--------------|----------------------|
| Time (Min.) | Pressure (psig) | Temp (deg F) | Annotation |
| 0 | 1818.28 | 102.05 | Initial Hydro-static |
| 2 | 22.94 | 101.62 | Open To Flow (1) |
| 17 | 24.63 | 101.95 | Shut-in(1) |
| 46 | 47.84 | 102.83 | End Shut-in(1) |
| 47 | 25.43 | 102.83 | Open To Flow (2) |
| 60 | 1715.91 | 104.16 | Final Hydro-static |

| Recovery | | |
|-------------|-------------|--------------|
| Length (ft) | Description | Volume (bbl) |
| 5.00 | Mud | 0.04 |
| | | |
| | | |
| | | |
| | | |

* Recovery from multiple tests

| Gas Rates | | | |
|-----------|----------------|-----------------|------------------|
| | Choke (inches) | Pressure (psig) | Gas Rate (Mcf/d) |
| | | | |