



TRILOBITE TESTING, INC.

DRILL STEM TEST REPORT

Samuel Gary Jr & Associates Inc

15-12s-17w Ellis

1515 Wynkoop
Ste 700
Denver Co 80202
ATTN: Chris Mitchell

Schmeidler etal#2-15

Job Ticket: 52091 **DST#: 3**

Test Start: 2013.06.07 @ 09:20:05

GENERAL INFORMATION:

Formation: **LKC I-L**
 Deviated: No Whipstock: ft (KB)
 Test Type: Conventional Bottom Hole (Reset)
 Time Tool Opened: 10:56:30 Tester: Ray Schwager
 Time Test Ended: 16:13:59 Unit No: 42
 Interval: **3530.00 ft (KB) To 3599.00 ft (KB) (TVD)** Reference Elevations: 2143.00 ft (KB)
 Total Depth: 3599.00 ft (KB) (TVD) 2135.00 ft (CF)
 Hole Diameter: 7.85 inches Hole Condition: Fair KB to GR/CF: 8.00 ft

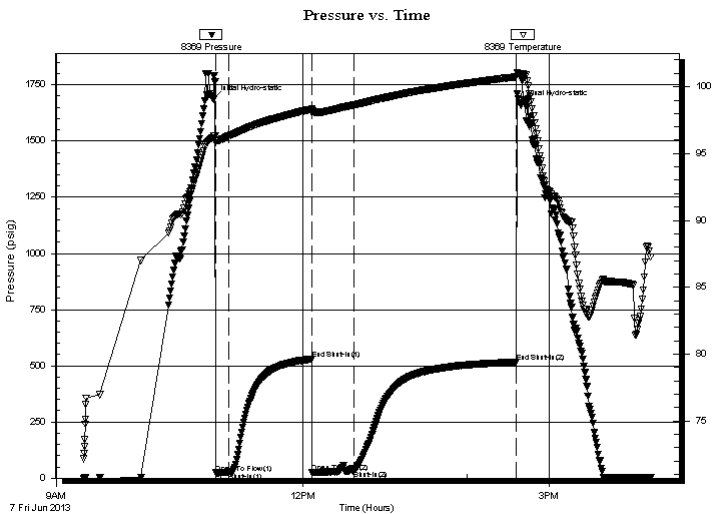
Serial #: 8369

Inside

Press @ Run Depth: 33.17 psig @ 3539.00 ft (KB) Capacity: 8000.00 psig
 Start Date: 2013.06.07 End Date: 2013.06.07 Last Calib.: 2013.06.07
 Start Time: 09:20:05 End Time: 16:13:59 Time On Btm: 2013.06.07 @ 10:54:45
 Time Off Btm: 2013.06.07 @ 14:38:59

TEST COMMENT: 10-IFP-surface bl thru-out
 60-ISIP-no bl
 30-FFP-no bl
 120-FSIP-no bl

PRESSURE SUMMARY



Time (Min.)	Pressure (psig)	Temp (deg F)	Annotation
0	1686.39	96.21	Initial Hydro-static
2	23.03	95.83	Open To Flow (1)
12	24.82	96.32	Shut-In(1)
72	529.97	98.33	End Shut-In(1)
73	23.87	98.05	Open To Flow (2)
103	33.17	98.63	Shut-In(2)
221	516.08	100.74	End Shut-In(2)
225	1662.92	100.96	Final Hydro-static

Recovery

Length (ft)	Description	Volume (bbl)
5.00	Mud	0.02

Gas Rates

Choke (inches)	Pressure (psig)	Gas Rate (Mcf/d)

* Recovery from multiple tests



**TRILOBITE
TESTING, INC.**

DRILL STEM TEST REPORT

FLUID SUMMARY

Samuel Gary Jr & Associates Inc

15-12s-17w Ellis

1515 Wynkoop
Ste 700
Denver Co 80202
ATTN: Chris Mitchell

Schmeidler etal#2-15

Job Ticket: 52091 **DST#: 3**

Test Start: 2013.06.07 @ 09:20:05

Mud and Cushion Information

Mud Type: Gel Chem	Cushion Type:	Oil API:	deg API
Mud Weight: 9.00 lb/gal	Cushion Length: ft	Water Salinity:	ppm
Viscosity: 54.00 sec/qt	Cushion Volume: bbl		
Water Loss: 8.34 in ³	Gas Cushion Type:		
Resistivity: ohm.m	Gas Cushion Pressure: psig		
Salinity: 3500.00 ppm			
Filter Cake: 1.00 inches			

Recovery Information

Recovery Table

Length ft	Description	Volume bbl
5.00	Mud	0.025

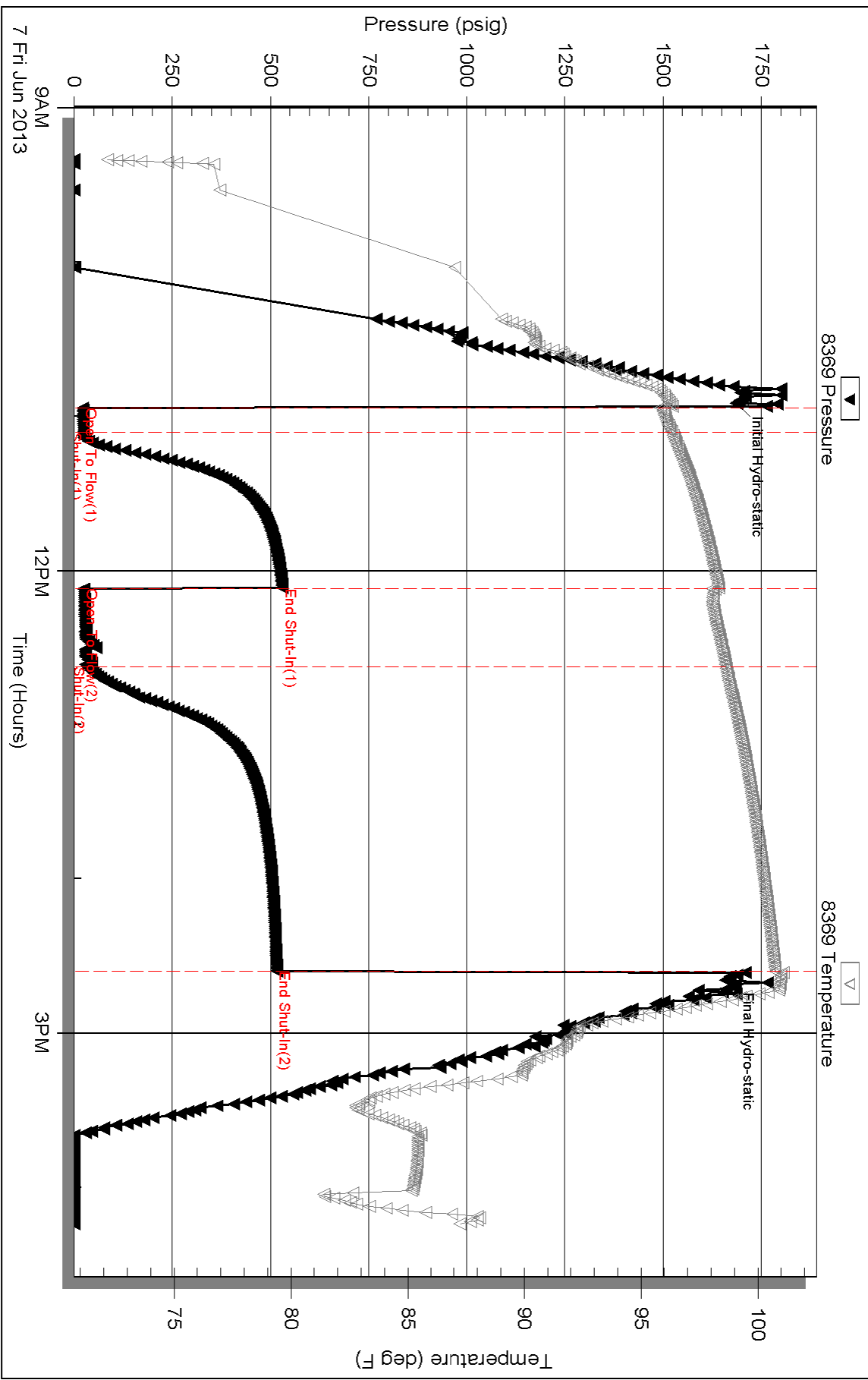
Total Length: 5.00 ft Total Volume: 0.025 bbl

Num Fluid Samples: 0 Num Gas Bombs: 0 Serial #:

Laboratory Name: Laboratory Location:

Recovery Comments: Sampler Data: PSI,25 # 1500ML Mud

Pressure vs. Time



Serial #: 8374

Fluid

Samuel Gary Jr & Associates Inc

Schneider et al #2-15

DST Test Number: 3

