

**OPERATOR**

Company: CARRIE EXPLORATION AND DEVELOPMENT  
 Address: 210 W. 22ND  
 HAYS, KS 67601

Contact Geologist: RON HEROLD  
 Contact Phone Nbr: 913-961-2760

Well Name: DOLL C-1

Location: SW NE NE SW Sec.19 T19S R10W API: 15-159-22,750-00-00

Pool: CHASE-SILICA

State: KANSAS

Country: USA

**Scale 1:240 Imperial**

Well Name: DOLL C-1  
 Surface Location: SW NE NE SW Sec.19 T19S R10W  
 Bottom Location:  
 API: 15-159-22,750-00-00  
 License Number: 6768  
 Spud Date: 9/11/2013 Time: 5:00 PM  
 Region: BARTON COUNTY  
 Drilling Completed: 9/15/2013 Time: 9:30 AM  
 Surface Coordinates: 2300' FSL & 2300' FWL  
 Bottom Hole Coordinates:  
 Ground Elevation: 1769.00ft  
 K.B. Elevation: 1778.00ft  
 Logged Interval: 2500.00ft To: 3390.00ft  
 Total Depth: 3390.00ft  
 Formation: ARBUCKLE  
 Drilling Fluid Type: CHEMICAL/FRESH WATER GEL

**SURFACE CO-ORDINATES**

Well Type: Vertical  
 Longitude:  
 N/S Co-ord: 2300' FSL  
 E/W Co-ord: 2300' FWL  
 Latitude:

**LOGGED BY**

Company: SOLUTIONS CONSULTING, INC  
 Address: 108 W 35TH  
 HAYS, KS 67601

Phone Nbr: (785) 639-1337  
 Logged By: Geologist

Name: STEVE REED / HERB DEINES

**CONTRACTOR**

Contractor: SOUTHWIND DRILLING CO  
 Rig #: 2  
 Rig Type: MUD ROTARY  
 Spud Date: 9/11/2013  
 TD Date: 9/15/2013  
 Rig Release: 9/16/2013

Time: 5:00 PM  
 Time: 9:30 AM  
 Time: 12:00 AM

**ELEVATIONS**

K.B. Elevation: 1778.00ft  
 K.B. to Ground: 9.00ft  
 Ground Elevation: 1769.00ft

**NOTES**

RECOMMENDATION TO RUN 5 1/2" PRODUCTION CASING BASED ON FAVORABLE SHOWS AND HIGHER STRUCTURE THROUGH THE LANSING/KANSAS CITY AND ARBUCKLE FORMATIONS THAN SURROUNDING WELLS.

OPEN HOLE LOGGING PERFORMED BY PIONEER ENERGY SERVICES: DUAL COMPENSATED POROSITY LOG, DUAL INDUCTION LOG, MICRO RESISTIVITY LOG.

NO DST'S WERE PERFORMED.

**FORMATION TOPS COMPARISON SUMMARY AND CHRONOLOGY OF DAILY ACTIVITY**

	WELL NAME		COMP. WELL	COMP. WELL
	DOLL C-1 CARRIE EXPLORATION		DOLL B-2	DOLL B-1
FORMATION	SAMPLE TOPS	LOG TOPS	LOG TOPS	LOG TOPS
TOPEKA	2605 - 827	2598 - 820	-824	-840
HEEBNER SHALE	2866 - 1088	2864 - 1086	-1091	-1094
TORONTO	2888 - 1110	2886 - 1108	-1113	-1115
DOUGLAS SHALE	2896 - 1120	2894 - 1116	-1122	-1124
BROWN LIME	2982 - 1204	2982 - 1204	-1209	-1211
LKC	3004 - 1226	3009 - 1231	-1233	-1235
BKC	3268 - 1490	3267 - 1489	-1495	-1476
ARBUCKLE	3296 - 1518	3296 - 1518	-1519	-1520

**SUMMARY OF DAILY ACTIVITY**

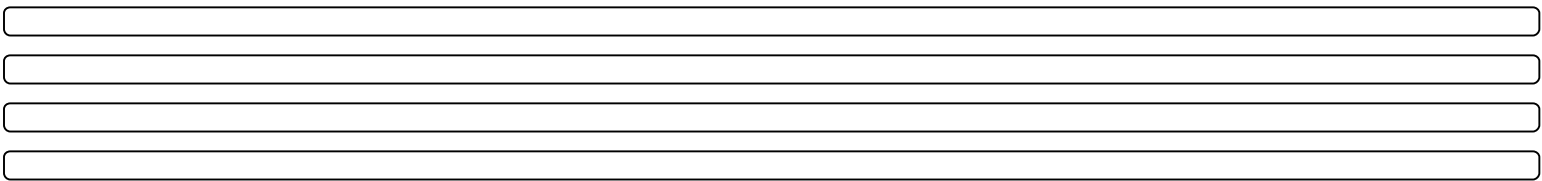
9-11-13 RU, spud @ 5:00pm; 8 5/8" surface casing set at 296' w/180 sxs common, 2% gel, 3%cc, woc.

9-12-13 933' drilling

9-13-13 2103' drilling

9-14-13 2895' drilling

9-15-13 3390 RTD @ 9:30am, CTCH 1hr, short trip (25 stands), CTCH 1hr, TOWB, slope 1°, strap 3554.57', board 3554.54', .03' long, open hole logging.



**ROCK TYPES**

Cht vari	Lmst fw<7	shale, gry	Ss
Dolprim	Lmst fw7>	Carbon Sh	Cht brn
Dol Lime	shale, grn	shale, red	

**ACCESSORIES**

<b>MINERAL</b>	<b>FOSSIL</b>	<b>TEXTURE</b>
▲ Chert, dark	F Fossils < 20%	C Chalky
∩ Glauconite	○ Oolite	
P Pyrite	⊕ Oomoldic	
△ Chert White	⊕ Fossilinid	
∕ Euhed rhombs of dol or		

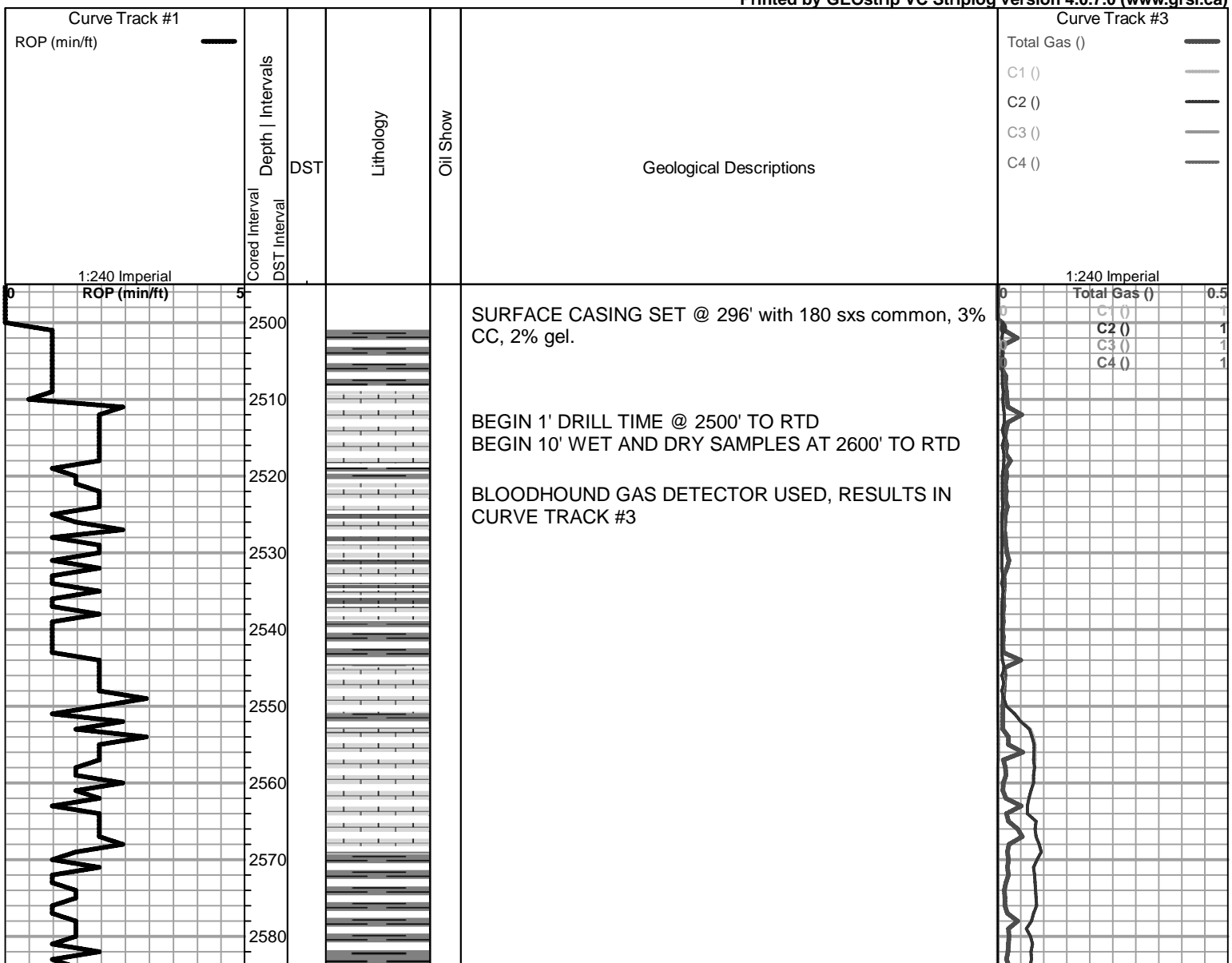
**OTHER SYMBOLS**

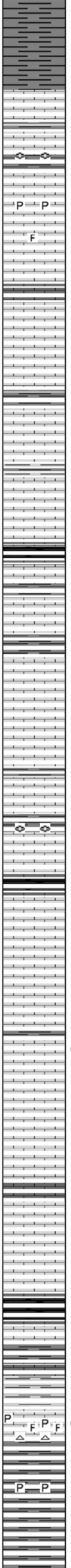
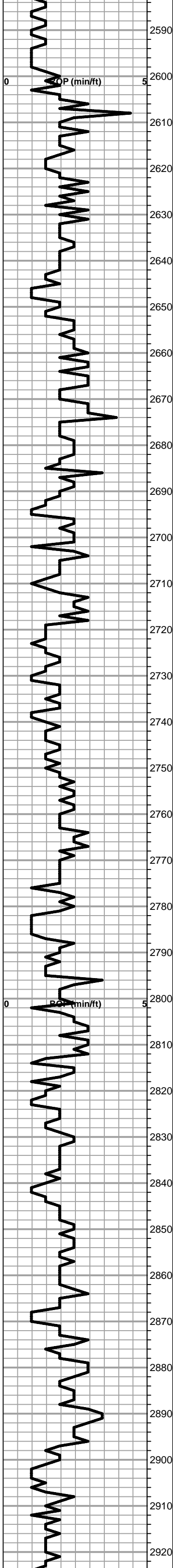
**DST**

■ DST Int

■ DST alt

Printed by GEOstrip VC Striplog version 4.0.7.0 (www.grsi.ca)





Shale, light to medium gray soft-medium blocky

**TOPEKA SPL 2605 (-827) ELOG 2598 (-820)**

Lime, tan-brown fnxn, chalky in part

Lime, light gray-brown fnxn, fusulinids

Lime, cream-light brown fn-med xln, pyrite

Lime, light brown fnxn, slightly fossiliferous

Lime, tan-medium xln

Lime, medium brown fnxn  
chalk soft sticky

Shale, medium gray soft blocky

Lime, medium brown-gray fnxn

Shale, greenish gray soft blocky bedded

Lime, tan-light brown medium xln

Shale, black carbonaceous

Shale, gray-brown soft sticky

Lime, light-medium brown fnxn

Lime, light-medium brown granular, friable

Lime, tan fnxn dense  
chalk soft sticky in part

Lime, tan-light brown fnxn, with bedded chalk

Lime, cream-tan granular, friable, fusulinids

Lime, medium brown fnxn dense, bedded chalk in part  
Shale, black carbonaceous

Lime, cream-tan granular friable

Lime, light-medium brown fnxn dense

Lime, light-medium brown fine interxn porosity, slight stain,  
no odor, NSFO, bedded chalk in part

Lime, light-medium brown fn-med xln

Lime, tan-light brown fnxn

Lime, cream-medium brown fnxn, bedded chalk

Lime, cream-light brown granular, chalky in part

Lime, cream-light brown medium xln, bedded chalk

**HEEBNER SH SPL 2866 (-1088) ELOG 2864 (-1086)**

Shale, black carbonaceous  
Lime, light-medium brown fnxn

Shale, greenish/gray soft blocky

**TORONTO SPL 2888 (-1110) ELOG 2886 (-1108)**

Lime, cream clean fnxn, couple chips with slight vuggy  
porosity, slight show of heavy dark oil

**DOUGLAS SH SPL 2896 (-1120) ELOG 2894 (-1116)**

Shale, light gray blocky granular, pyrite

Shale, light-medium gray with black specks, fissile

Shale, light-medium gray soft blocky

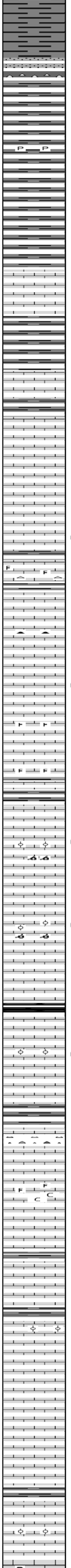
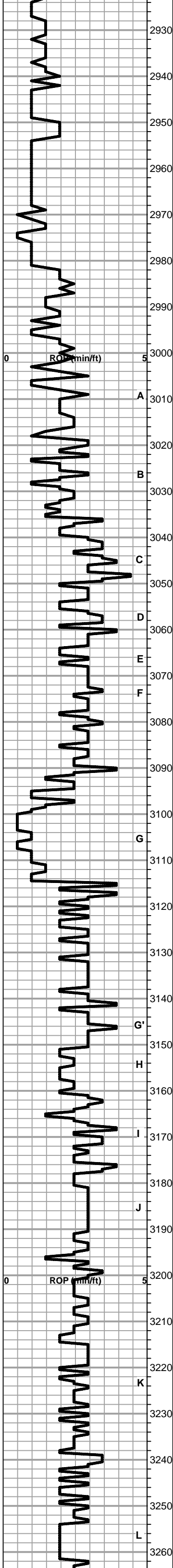
Total Gas ( ) 0.5

C1 ( ) 1  
C2 ( ) 1  
C3 ( ) 1  
C4 ( ) 1

Total Gas ( ) 0.5

C1 ( ) 1  
C2 ( ) 1  
C3 ( ) 1  
C4 ( ) 1

Data lost because of  
faulty geograph trigger  
switch.



Shale, light gray soft blocky waxy

Sandstone, tan-dark brown clasts, well rounded, well sorted clusters NSFO, medium brown chert

Shale, light gray soft blocky

Shale, light-medium gray/brown soft blocky pyritic

Shale, light-medium gray soft blocky

**BROWN LIME SPL 2982 (-1204) ELOG 2982 (-1204)**

Lime, medium brown fnxn, hard, dense

Shale, light gray soft blocky

**LKC SPL 3004 (-1226) ELOG 3009 (-1231)**

Lime, light-medium brown fnxn

Lime, cream-tan oolitic/oomoldic NSFO, chalk soft sticky

Lime, cream fnxn, few chips oolitic with slight stain NSFO limited pinpoint porosity

Lime, cream-light brown fnxn slightly fossiliferous, white chert

Lime, cream-light brown fin-medium xln, brown chert

Lime, cream-light brown/gray with some fine pinpoint porosity, 1 chip with scattered stain, NSFO

Lime, light brown-gray fnxn slightly fossiliferous

Lime, cream fnxn slightly fossiliferous

Lime, light brown oolitic/oomoldic slight vuggy porosity, light scattered stain, NSFO, good odor, tan chert

Lime, light brown oolitic, scattered vuggy porosity, NSFO, scattered stain, slight odor

Lime, medium brown fnxn, bedded chalk in part

Shale, black carbonaceous

Lime, cream-medium brown oolitic with scattered stain, NSFO, no odor

Lime, light-medium brown fnxn, some oolitic NSFO, no odor

Lime, medium brown fnxn, very hard, various colored cherts.

Lime, light-medium brown fnxn, chalk soft sticky, slightly fossiliferous

Lime, light brown-gray fnxn dense

Lime, cream-light brown fnxn, bedded chalk in part

Lime, cream-medium brown fnxn some oolitic with slight vuggy porosity, NSFO, no odor

Lime, offwhite-light brown granular, brittle upon crush

Lime, cream-medium brown fn-vfxln

Lime, light gray vfxln, hard, dense

Lime, light brown-gray fnxn

Lime, light-medium brown fn-medxln, some oolitic with low porosity, NSFO, no odor

Lime, cream-light gray fn-vfxln, pyrite

Total Gas (l)	0.5
C1 (l)	1
C2 (l)	1
C3 (l)	1
C4 (l)	1

Total Gas (l)	0.5
C1 (l)	1
C2 (l)	1
C3 (l)	1
C4 (l)	1

**Data lost because of faulty geograph trigger switch.**

