

GEOLOGIST'S REPORT

DRILLING TIME AND SAMPLE LOG

COMPANY TRANS PACIFIC OIL CORP.
 WELLS Hagens "A" 1-11
 FIELD W.C.
 LOCATION 3300' FSL 1320' FWL
 SEC 11 TWP 17S RGE 27W
 COUNTY LANE STATE Ks
 CONTRACTOR Duke Rig #4
 SPUD 8/26/13 COMP 9/15/13
 RTE 4570 4572
 MUD 3600 TYPE MUD chem.

ELEVATIONS
 KB 2605
 GF _____
 OL 2596
 Measurements Are All
 From KB
 CASING
 SURFACE 8 5/8" @ 222
 PRODUCTION _____
 ELECTRICAL SURVEYS
DUAL
Comp-Den Micro

SAMPLES TAKEN FROM 3800 TO RTD
 DRILLING TIME REPORT FROM 3600 TO RTD
 SAMPLES EXAMINED FROM 3800 TO RTD
 LOGGING SURVEYS RUN FROM 3700 TO RTD
 GEOLOGIST ON WELL Michael R. Kidwell

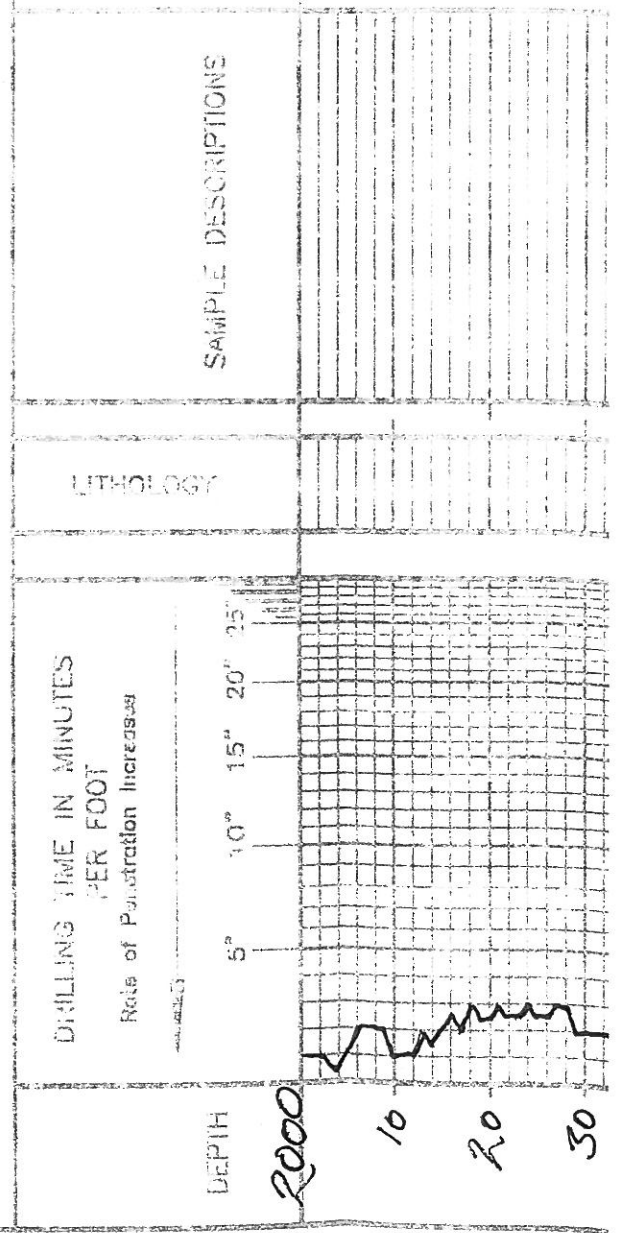
FORMATION TOPS	LOG	SAMPLES
Anhydrite	2005 - 4600	
B/Anhy	2039 - 4567	
Heebner Sh.	3861 - 1256	3858
Lansing	3903 - 1298	3900
Stark Sh.	4153 - 1548	4152
G/KC	4224 - 1619	4222
Ft. Scott	4411 - 1806	4408
Okeroc	4436 - 1831	4434
Miss LS	4542 - 1937	4536

REMARKS

LEGEND

-  Dolomite
-  Chert
-  Ool. Lims
-  Gypsions
-  Carb. sh.
-  Sand
-  Sandstone
-  Salt
-  Anhydrite

SCALE 1" = 100'



3600

10

20

30

40

50

60

70

80

90

3700

10

20

30

40

50

60

70

80

90

3800

10

20

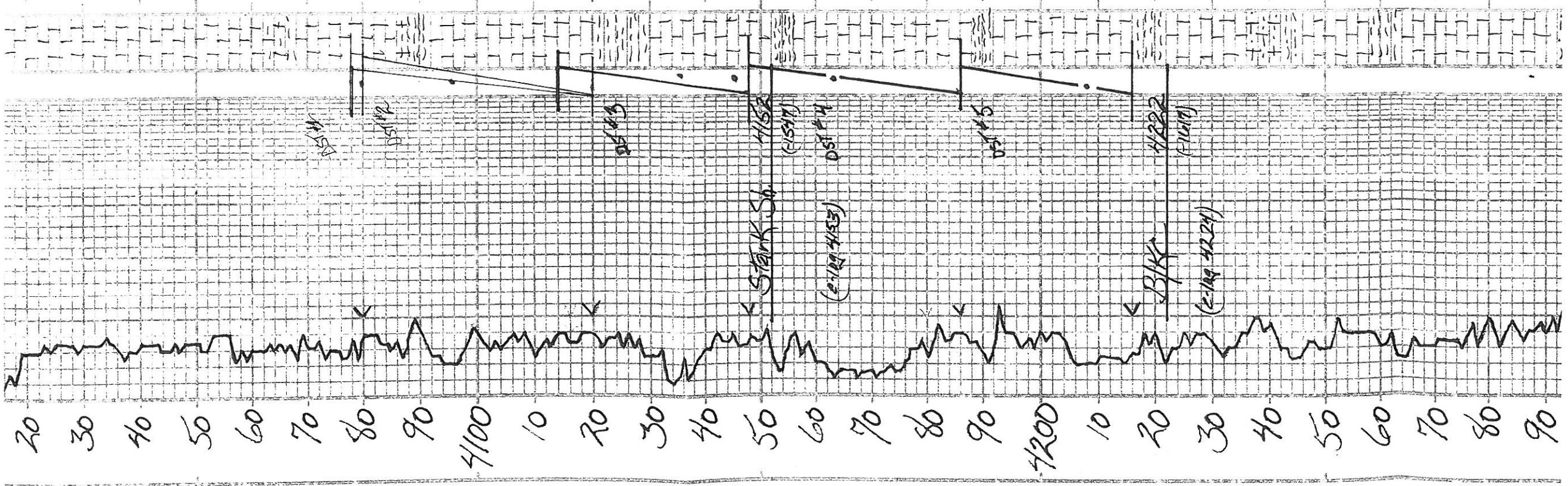
30

40

LS: 11.44 $\frac{cm}{m}$ for $x=9$
LS: 11.44 $\frac{cm}{m}$ for $x=9$
LS: 11.44 $\frac{cm}{m}$ for $x=9$

LS: 11.44 $\frac{cm}{m}$ for $x=9$
LS: 11.44 $\frac{cm}{m}$ for $x=9$
LS: 11.44 $\frac{cm}{m}$ for $x=9$

LS: 11.44 $\frac{cm}{m}$ for $x=9$
LS: 11.44 $\frac{cm}{m}$ for $x=9$
LS: 11.44 $\frac{cm}{m}$ for $x=9$



LS-1491 vr. fa. xln
ool

LS-cm vr. fa. xln
chrt-cm Spm

LS-cm 1491 vr. fa. xln

LS-1491 vr. fa. xln
Sh-grly

LS-1491 vr. fa. xln
LS-1491 vr. fa. xln
fine w/ S.S. to nodu
partly

Sh-grly

LS-1491 vr. fa. xln
Sck-sh ool vr. fa. xln
ool ool S.S. to nodu
partly

LS-cm 1491 vr. fa. xln

Sh-grly

LS-1491 vr. fa. xln
ool ool S.S. to nodu
partly

LS-dex vr. fa. xln
ool ool S.S. to nodu
partly

Sh-blk carb

LS-1491 vr. fa. xln
ool ool S.S. to nodu
partly

LS-1491 vr. fa. xln s. d. d. b.

LS-cm vr. fa. xln

LS-1491 vr. fa. xln

Sh-blk carb

LS-1491 vr. fa. xln

LS-fan vr. fa. xln
ool ool S.S. to nodu
partly

Sh-blk

LS-1491 vr. fa. xln
ool ool S.S. to nodu
partly

Sh-sh-grly

LS-cm 1491 vr. fa. xln
ool ool S.S. to nodu
partly

Sh-grly

LS-1491 vr. fa. xln

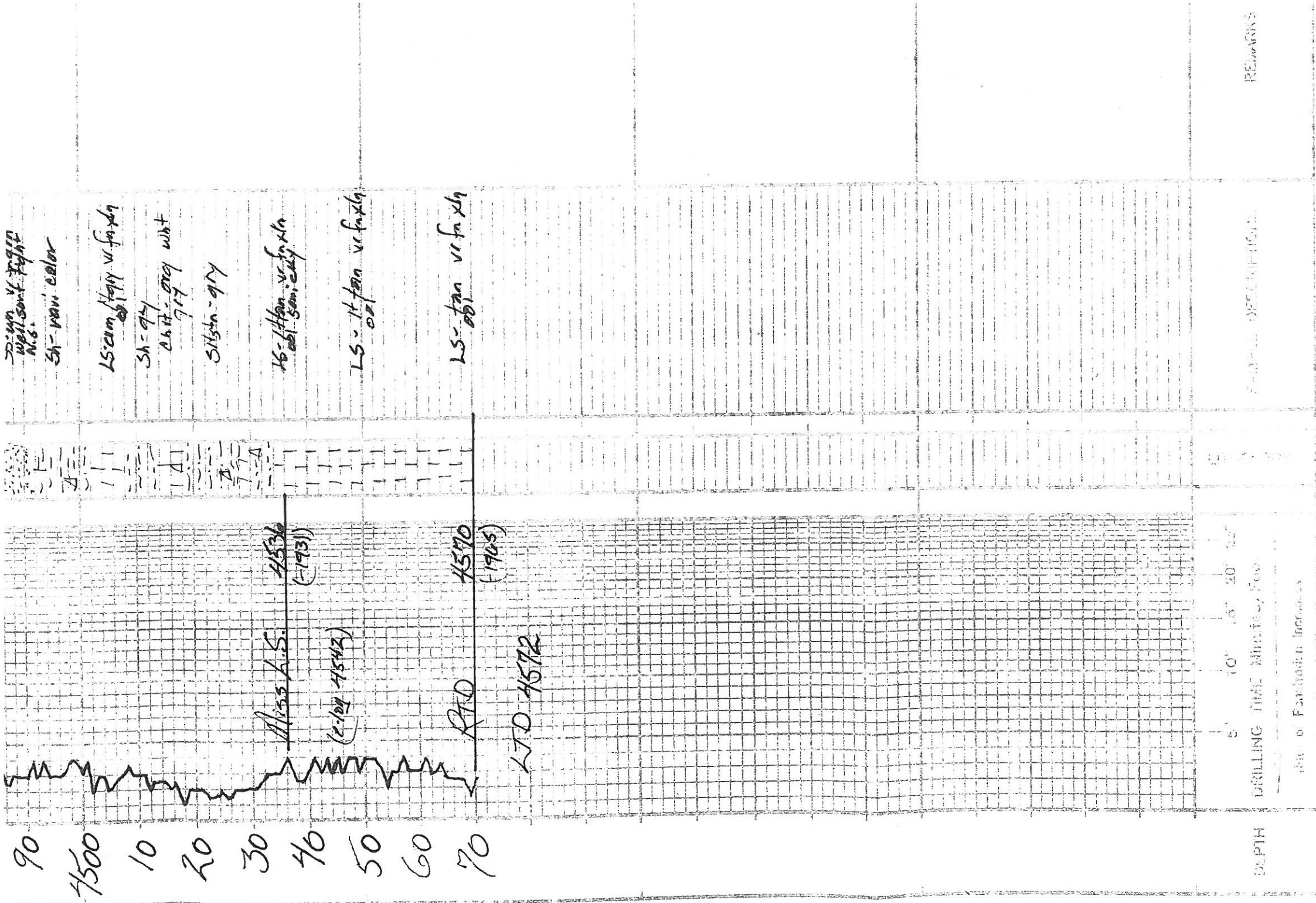
LS-1491 vr. fa. xln

LS-1491 vr. fa. xln
ool ool S.S. to nodu
partly

DST #2
4080-4120
30'-75'-60'-9'
1st open - 8
2nd open - 8
Rec:;
IHP 13-24
FFP 25-37
ISIP 1111
F&IP 1089
IHP 1933
FHP 1933

DST #3
4114-4148
30'-75'-60'-9'
1st open -
2nd open -
Rec:;
IHP 10-69
FFP 74-153
ISIP 906
F&IP 873
IHP 1944
FHP 1929

DST #4
4148-4186
30'-75'-60'-90
1st open - B
2nd open - B
Rec:;
IHP 21-118
FFP 128-293
ISIP 806
FFP 873



COMPANY _____

LEASE _____

LOCATION _____

COUNTY _____ STATE _____

REMARKS _____