



**TRILOBITE  
TESTING, INC.**

# DRILL STEM TEST REPORT

Russell Oil, Inc  
 PO Box 8050  
 Edmond, Ok 73083  
 ATTN: Kit Noah

**27 15s 35w Logan, Ks**  
**Ken Baker #27**  
 Job Ticket: 48756 **DST#: 1**  
 Test Start: 2013.06.27 @ 02:29:00

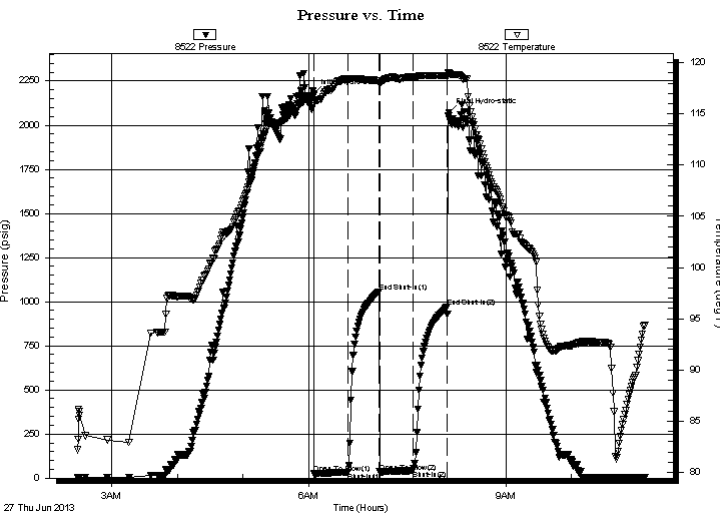
## GENERAL INFORMATION:

Formation: **Altamont C**  
 Deviated: No Whipstock: ft (KB)  
 Time Tool Opened: 06:05:00  
 Time Test Ended: 11:07:15  
 Interval: **4381.00 ft (KB) To 4414.00 ft (KB) (TVD)**  
 Total Depth: 4414.00 ft (KB) (TVD)  
 Hole Diameter: 7.88 inches Hole Condition: Good  
 Test Type: Conventional Bottom Hole (Initial)  
 Tester: Bradley Walter  
 Unit No: 53  
 Reference Elevations: 3112.00 ft (KB)  
 3102.00 ft (CF)  
 KB to GR/CF: 10.00 ft

## Serial #: 8522 Outside

Press @ Run Depth: 42.62 psig @ 4382.00 ft (KB) Capacity: 8000.00 psig  
 Start Date: 2013.06.27 End Date: 2013.06.27 Last Calib.: 2013.06.27  
 Start Time: 02:29:05 End Time: 11:07:15 Time On Btm: 2013.06.27 @ 06:04:45  
 Time Off Btm: 2013.06.27 @ 08:08:00

TEST COMMENT: IF: Surface blow, died @ 11 min.  
 IS: No return.  
 FF: No return, Flushed tool, no blow.  
 FS: No return.



## PRESSURE SUMMARY

Time (Min.)	Pressure (psig)	Temp (deg F)	Annotation
0	2180.44	116.83	Initial Hydro-static
1	24.50	116.04	Open To Flow (1)
31	34.37	118.36	Shut-In(1)
60	1056.20	118.28	End Shut-In(1)
60	35.42	117.88	Open To Flow (2)
91	42.62	118.59	Shut-In(2)
122	969.09	118.73	End Shut-In(2)
124	2071.87	118.98	Final Hydro-static

## Recovery

Length (ft)	Description	Volume (bbl)
40.00	w cm 30w 70m (oil spots)	0.20

## Gas Rates

Choke (inches)	Pressure (psig)	Gas Rate (Mcf/d)



**TRILOBITE  
TESTING, INC.**

**DRILL STEM TEST REPORT**

**FLUID SUMMARY**

Russell Oil, Inc  
PO Box 8050  
Edmond, Ok 73083  
ATTN: Kit Noah

**27 15s 35w Logan, Ks**  
**Ken Baker #27**  
Job Ticket: 48756      **DST#: 1**  
Test Start: 2013.06.27 @ 02:29:00

**Mud and Cushion Information**

Mud Type: Gel Chem	Cushion Type:	Oil API: 0 deg API
Mud Weight: 9.00 lb/gal	Cushion Length: ft	Water Salinity: 20000 ppm
Viscosity: 52.00 sec/qt	Cushion Volume: bbl	
Water Loss: 8.78 in <sup>3</sup>	Gas Cushion Type:	
Resistivity: ohm.m	Gas Cushion Pressure: psig	
Salinity: 5700.00 ppm		
Filter Cake: 1.00 inches		

**Recovery Information**

Recovery Table

Length ft	Description	Volume bbl
40.00	w cm 30w 70m (oil spots)	0.197

Total Length: 40.00 ft      Total Volume: 0.197 bbl  
 Num Fluid Samples: 0      Num Gas Bombs: 0      Serial #:  
 Laboratory Name:      Laboratory Location:  
 Recovery Comments: rw is .280 @ 88F = 20,000ppm

