

# KITT NOAH

PETROLEUM GEOLOGIST  
Kansas License #229



## GEOLOGIST'S REPORT

DRILLING TIME AND SAMPLE LOG

ELEVATION: **KB 3112**  
 G.L.: **3102**  
 MEASURED FROM: **KB**  
 #15-109-21.186

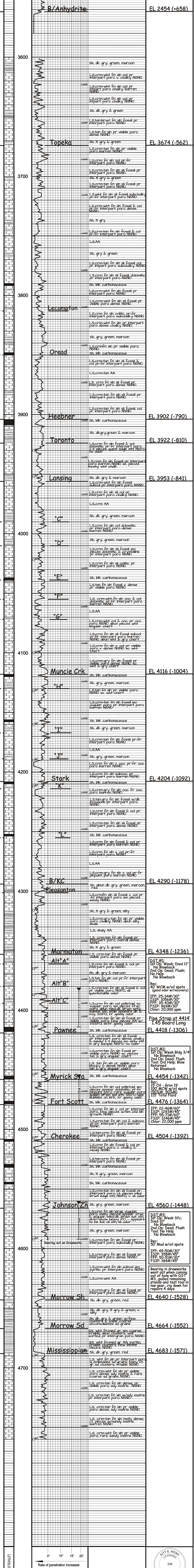
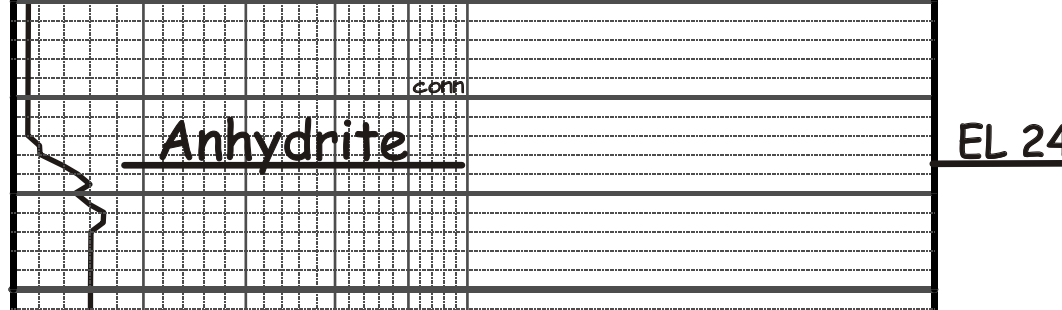
OPERATOR: **Russell Oil, Inc.** LOCATION: **1200FS & 1480FE**  
 LEASE: **Ken Baker "B"** WELL NO.: **#27-1** SEC.: **27** TWP.: **15S** RNG.: **35W**  
 API: **15-109-21.186** FIELD: **Wildcat** COUNTY: **Logan** STATE: **Kansas**

FORMATION TOG LOG  
**Anhydrite** 2434 (+678)  
**B/Anhydrite** 2454 (+658)  
**Heebner** 3902 (-790)  
**Toronto** 3922 (-810)  
**Lansing** 3923 (-841)  
**Stark** 4204 (-1092)  
**B/KC** 4290 (-1178)  
**Marmaton** 4338 (-1236)  
**Pawnee** 4418 (-1306)  
**Cherokee** 4504 (-1392)  
**Mississippian** 4683 (-1571)  
**RTD** 4758 (-1646)

CONTRACTOR: **H2 Drilling Bldg #2**  
 COMM. - **6-20-2013** COM. PL. - **7-5-2013**  
 RTD - **4760** LTD - **4758**  
 SAMPLES SAVED FROM: **3600 to TD**  
 DRILLING TIME SAVED FROM: **3600 to TD**  
 SAMPLES EXAMINED FROM: **3600 to TD**  
 GEO. ORICAL SUPERVISION FROM: **3730 to TD**  
 MUD JIP: **3450** MUD TYPE: **Chemical**  
 MUDDER: **Terex Sealin 1100**  
 DRILL STEAMERS TAKEN: **None**  
 LITHOBLITE - **Bradley Wilfers**

SURVERS: **Primer Energy Services**  
 Data Production  
 Microlog  
 Real-time Compensated Sonic

### LEGEND



DST #1:  
1st Op: Weak; Died 11"  
No Blowback  
2nd Op: Dead; Flush;  
No Help  
No Blowback  
Rec: 40' WCM w/oil spots (good odor w/recovery)  
IFP: 25-34#/30"  
ISIP: 1056#/30"  
FFP: 35-43#/30"  
FSIP: 969#/30"  
Chlor: 20,000 ppm

Pipe Stand at 4414'  
1.45 Board Long

DST #2:  
1st Op: Weak Bldg 3/4"  
No Blowback  
2nd Op: Dead; Flush  
Tool: Did Help; Blow  
Returned  
No Blowback  
Rec: 15' Oil - Grav 19  
100' MCW w/oil spots (90%W, 50%AM)  
115' Total Fluid

IFP: 22-46#/60"  
ISIP: 1293#/45"  
FFP: 57-71#/60"  
FSIP: 1246#/45"  
Chlor: 22,000 ppm

DST #3:  
1st Op: Weak Sfc;  
Died 10"  
No Blowback  
2nd Op: Dead; Flush  
Tool: No Help  
No Blowback  
Rec: 50' Mud w/oil spots  
IFP: 49-50#/30"  
ISIP: 358#/45"  
FFP: 50-51#/30"  
FSIP: 184#/45"

Bearing in drawworks went out when coming out of hole with DST #3...pulled remaining stands and test tool in low gear...rig down for repairs 4 days



ELEVATION: **KB 3112**

OPERATOR: **Russell Oil, Inc.** LOCATION: **1200FS & 1480FE**  
 LEASE: **Ken Baker "B"** WELL NO.: **#27-1** SEC.: **27** TWP.: **15S** RNG.: **35W**  
 API: **15-109-21.186** FIELD: **Wildcat** COUNTY: **Logan** STATE: **Kansas**