

KITT NOAH

PETROLEUM GEOLOGIST
Kansas License #229



GEOLOGIST'S REPORT

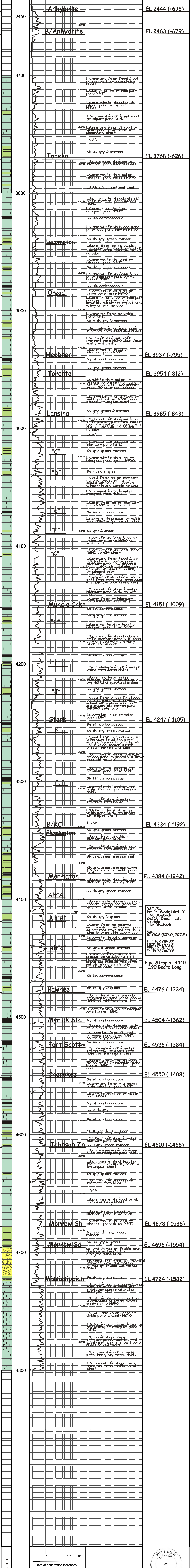
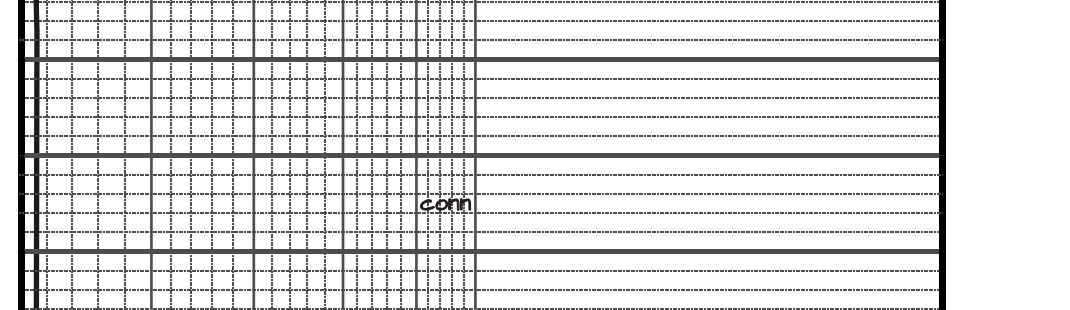
DRILLING TIME AND SAMPLE LOG

#15-203-20-221

ELEVATION: KB 3142
CL: 3132
MEASURED FROM: KB

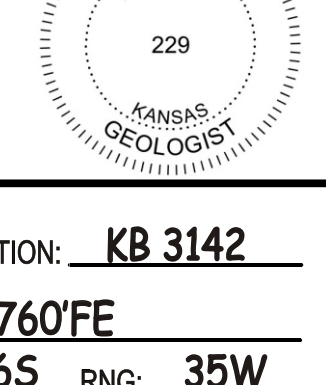
OPERATOR: Russell Oil, Inc.	LEASE: Ken Baker "A"	WELL NO.: #10-1	SEC.: 10	TWP.: 16S	RNG.: 35W
API: 15-203-20-221	FIELD: Wildcat	COUNTY: Wichita	STATE: Kansas		
FORMATION TOG LOG			CONTRACTOR: H2 Drilling Bldg #2		
Anyhrite	2444 (+698)	CONTRACTOR: H2 Drilling Bldg #2	COMM: 7-10-2013	CDP: 7-18-2013	
B/Anyhrite	2463 (+679)	RTD: 4800	LTD: 4800		
Heebner	3937 (-795)	SAMPLES SAVED FROM: 3700 to TD			
Toronto	3954 (-812)	DRILLING TIME SAVED FROM: 3700 to TD			
Lansing	3985 (-843)	SAMPLES EXAMINED FROM: 3700 to TD			
Stark	4247 (-1105)	GEO. ORICAL SUPERVISION FROM: 3900 to TD			
B/KC	4334 (-1192)	MUD JP: 3450	MUD TYPE: Chemical		
Marmaton	4387 (-1239)	MUDUC: Tom Mueseler			
Pleasanton	4476 (-1334)	DRILL STEAM PRESS. RAGEN: 1			
Morrow Sh	4504 (-1362)	TRIBIBITE: Sam Bennett			
Morrow Sd	4526 (-1384)				
Cherokee	4550 (-1408)				
Johnson Zn	4610 (-1468)				
Fort Scott	4678 (-1536)				
Myrick Sta	4696 (-1554)				
Pawnee	4724 (-1582)				
Mississippian	4800 (-1658)				
Surveys: Primer Energy Services					
Mud Production					
Micro Logging					
Compressed Sonic					

LEGEND



DST #1:
1st Op: Weak; Died 10"
No Blowback
2nd Op: Dead; Flush;
No Help
No Blowback
Rec:
10' OCM (30%O, 70%M)
TFP: 16-17#/30"
ISIP: 953#/30"
FFP: 19-19#/15"
FSIP: 767#/30"

Pipe Strap at 4440'
1.90 Board Long



ELEVATION: **KB 3142**

OPERATOR: **Russell Oil, Inc.** LOCATION: **420'FN & 1760'FE**

LEASE: **Ken Baker "A"** WELL NO.: **#10-1** SEC.: **10** TWP.: **16S** RNG.: **35W**

API: **15-203-20-221** FIELD: **Wildcat** COUNTY: **Wichita** STATE: **Kansas**