

Thomas J. Funk  
Petroleum Geologist

**Geologists Report**  
**Drilling Time and Sample Log**

OPERATOR **Murfin Drilling Co., Inc**  
WELL NO **#3-25**  
ELEVATION **3105'**

LEASE **Gary**  
FIELD **Wildcat**  
API **15-109-21189**

LOCATION **330' FSL & 500' FWL**  
SEC. **25** TWP. **12S** RGE. **33W**  
COUNTY **Logan** STATE **Kansas**

CONTRACTOR **Murfin Drilling Co** Rig #**22**  
COMM **6/7/13** COMP **6/16/13**  
RTD **4/760'** LOG TD **4756'**  
SAMPLES SAVED FROM **3720'** TO **4760'**  
DRILLING TIME KEPT FROM **3720'** TO **4760'**  
SAMPLES EXAMINED FROM **3720'** TO **4760'**

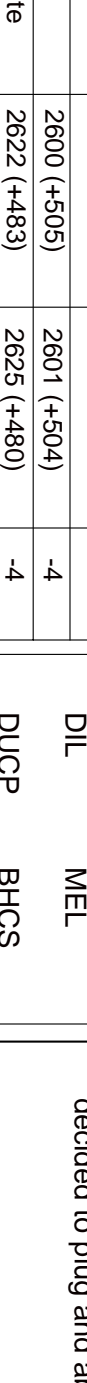
MEASUREMENTS ARE ALL FROM **KB**

CASING RECORD  
SURFACE **8 5/8" at 227' KB w/1655x**  
PRODUCTION **None**

GEOLOGICAL SUPERVISION FROM **3715'** TO **4760'**  
MUD/UP **3200** TYPE MUD **Chemical**

ELECTRICAL SURVEYS  
Pioneer Energy Serv  
DIL  
MEL  
DUCP  
BHCS

| FORMATION    | LOG TOP DATUM | SAMPLE TOP DATUM | STRUCT COMP |
|--------------|---------------|------------------|-------------|
| Anyndite     | 2800 (-450)   | 2801 (-454)      | -4          |
| B/Anyndite   | 2822 (-433)   | 2825 (-430)      | -4          |
| Topoka       | 3826 (-721)   | 3828 (-723)      | -7          |
| Heebner Sh   | 4039 (-934)   | 4043 (-938)      | -9          |
| Lansing      | 4081 (-976)   | 4084 (-979)      | -7          |
| Murcie Creek | 4230 (-1125)  | 4232 (-1127)     | -7          |
| Stark Sh     | 4314 (-1209)  | 4316 (-1211)     | -8          |
| Marmaton     | 4422 (-1317)  | 4424 (-1319)     | -8          |
| Pawnee       | 4511 (-1406)  | 4511 (-1406)     | -3          |
| Cherokee Sh  | 4592 (-1487)  | 4595 (-1490)     | -2          |
| Johnson Zone | 4634 (-1529)  | 4637 (-1532)     | -1          |
| Mississippi  | 4693 (-1588)  | 4697 (-1592)     | +5          |



| Date    | Depth    | NO. Size | Make        | Type   | Depth Out | Feet | Hours |
|---------|----------|----------|-------------|--------|-----------|------|-------|
| 6/7/13  | 3105'    | 1        | 12 1/4" GMS | RR     | 229       | 229  | 3     |
| 6/8/13  | 1045'    | 2        | 7 7/8" HTC  | DP506F | 3645      | 3416 | 52    |
| 6/9/13  | 2800'    | 3        | 7 7/8" HTC  | GX22s  | 4760      | 1015 | 94    |
| 6/10/13 | 3800'    |          |             |        |           |      |       |
| 6/11/13 | 3850'    |          |             |        |           |      |       |
| 6/12/13 | 4155'    |          |             |        |           |      |       |
| 6/13/13 | 4350'    |          |             |        |           |      |       |
| 6/14/13 | 4592'    |          |             |        |           |      |       |
| 6/15/13 | 4672'    |          |             |        |           |      |       |
| 6/16/13 | 4760' TD |          |             |        |           |      |       |

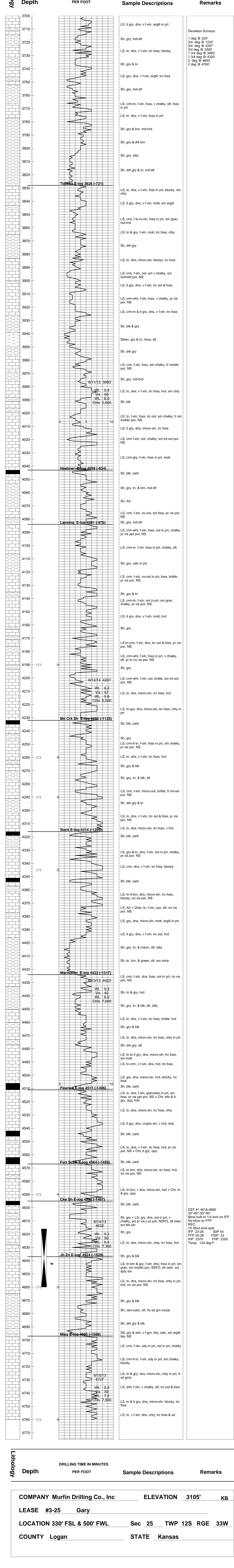
Remarks And Recommendations:  
Based upon log analysis, DST recovery, and sample examination, it was decided to plug and abandon the #3-25 Gary.

Thomas Funk  
Petroleum Geologist

REFERENCE WELL FOR STRUCTURAL COMPARISON: Murfin Drilling Co. #2-25 Gary  
FSL & 500' FWL sec. 25-12S-33W, Logan Co. KS

**LEGEND**

|           |      |           |       |            |           |               |       |          |
|-----------|------|-----------|-------|------------|-----------|---------------|-------|----------|
|           |      |           |       |            |           |               |       |          |
| Anhydrite | Salt | Sandstone | Shale | Carb Shale | Limestone | Ool Limestone | Chert | Dolomite |



|   |                        |                               |
|---|------------------------|-------------------------------|
| <b>COMPANY</b> Murfin Drilling Co., Inc | <b>ELEVATION</b> 3105' | <b>KB</b>                     |
| <b>LEASE</b> #3-25 Gary                 |                        |                               |
| <b>LOCATION</b> 330' FSL & 500' FWL     | <b>Sec</b> 25          | <b>TWP</b> 12S <b>RGE</b> 33W |
| <b>COUNTY</b> Logan                     | <b>STATE</b> Kansas    |                               |