

**TRILOBITE  
TESTING, INC.**

# DRILL STEM TEST REPORT

Murfin Drilling Company Inc

250 N Water STE 300  
Wichita KS, 67202 - 1216

ATTN: Tom Funk

25-12s-33w Logan Co, KS

Gary #3-25

Job Ticket: 53078

DST#: 1

Test Start: 2013.06.14 @ 19:10:00

## GENERAL INFORMATION:

Formation: **Johnson Zone**

Deviated: No Whipstock: ft (KB)

Time Tool Opened: 21:22:45

Time Test Ended: 02:41:00

Test Type: Conventional Bottom Hole (Initial)

Tester: Jace McKinney

Unit No: 46

Interval: **4616.00 ft (KB) To 4660.00 ft (KB) (TVD)**

Total Depth: 4660.00 ft (KB) (TVD)

Hole Diameter: 7.88 inches Hole Condition: Fair

Reference Elevations: 3105.00 ft (KB)

3094.00 ft (CF)

KB to GR/CF: 11.00 ft

Serial #: **8675**

Inside

Press@RunDepth: 25.90 psig @ 4617.00 ft (KB)

Start Date: 2013.06.14

End Date:

2013.06.15

Start Time: 19:10:00

End Time:

02:41:00

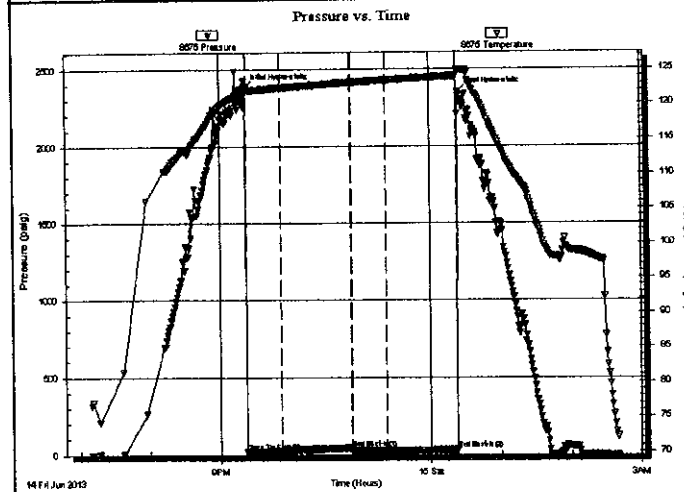
Capacity: 8000.00 psig

Last Calib.: 2013.06.15

Time On Btm: 2013.06.14 @ 21:22:15

Time Off Btm: 2013.06.15 @ 00:23:45

**TEST COMMENT:** Built to 1/4" blow, died to weak surface blow  
No return blow  
No blow  
No return blow



## PRESSURE SUMMARY

Time (Min.)	Pressure (psig)	Temp (deg F)	Annotation
0	2378.83	122.62	Initial Hydro-static
1	23.49	121.93	Open To Flow (1)
30	25.53	122.38	Shut-in(1)
90	44.25	123.11	End Shut-in(1)
91	25.37	123.11	Open To Flow (2)
120	25.90	123.42	Shut-in(2)
181	32.75	124.00	End Shut-in(2)
182	2350.16	124.82	Final Hydro-static

## Recovery

Length (ft)	Description	Volume (bbl)
10.00	100% Mud with oil spots	0.05

## Gas Rates

Choke (inches)	Pressure (psig)	Gas Rate (Mcf/d)

Serial #: 8675

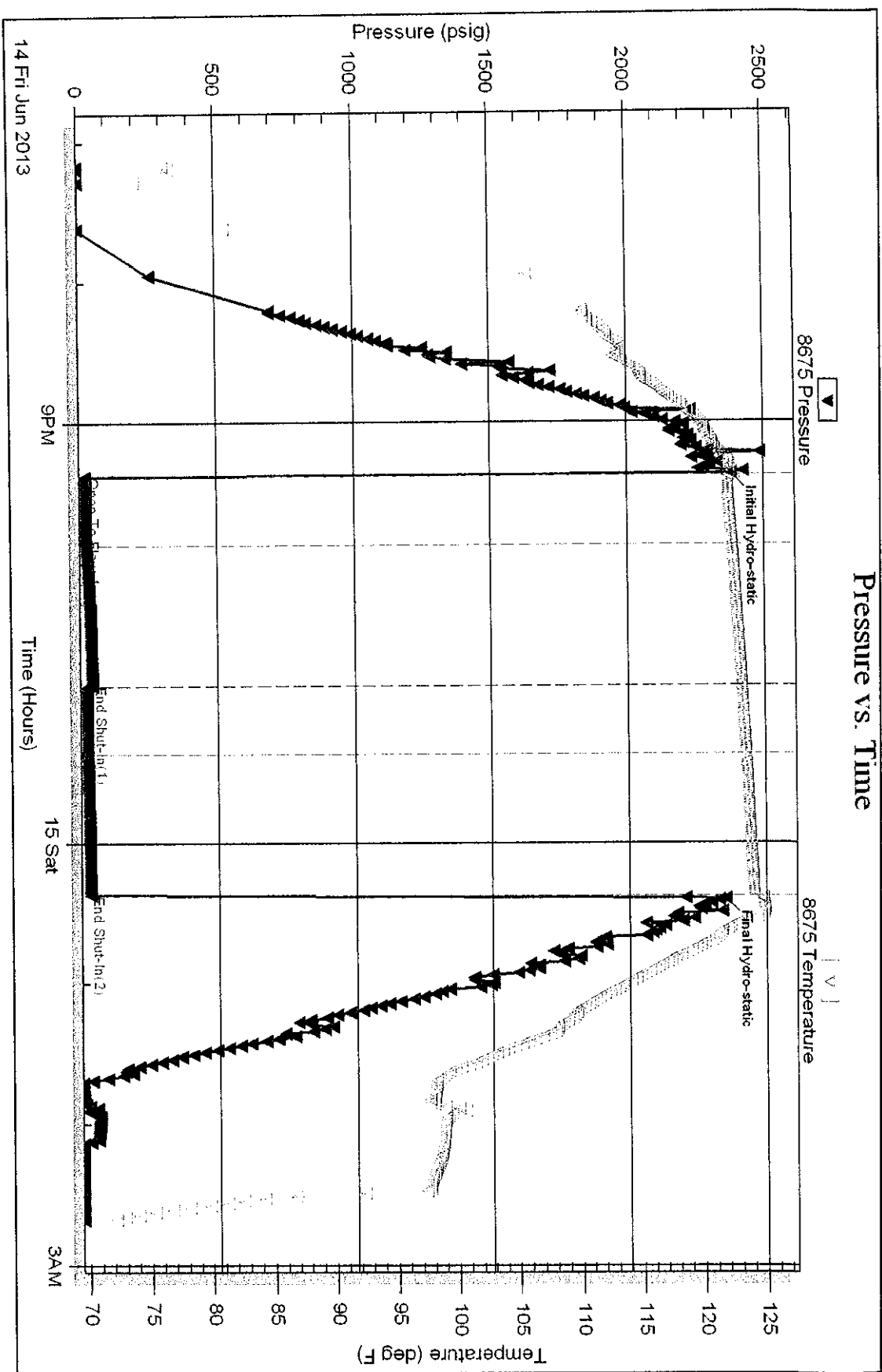
Inside

Murfin Drilling Company Inc

Gary #3-25

DST Test Number: 1

### Pressure vs. Time



Trickle Testing, Inc

Ref. No: 53078

Printed: 2013.06.15 @ 02:48:43