



DRILL STEM TEST REPORT

Prepared For: **Murfin Drilling Co**
250 N Water STE #300
Wichita, KS 67202

ATTN: Wes Hansen

Culwell 'A' #1-27

27-1s-37w Cheyenne, KS

Start Date: 2013.06.23 @ 12:00:00

End Date: 2013.06.23 @ 20:08:00

Job Ticket #: 52649 DST #: 1

Trilobite Testing, Inc
PO Box 362 Hays, KS 67601
ph: 785-625-4778 fax: 785-625-5620

Printed: 2013.06.27 @ 15:22:24



TRILOBITE TESTING, INC.

DRILL STEM TEST REPORT

Murfin Drilling Co
 250 N Water STE #300
 Wichita, KS 67202
 ATTN: Wes Hansen

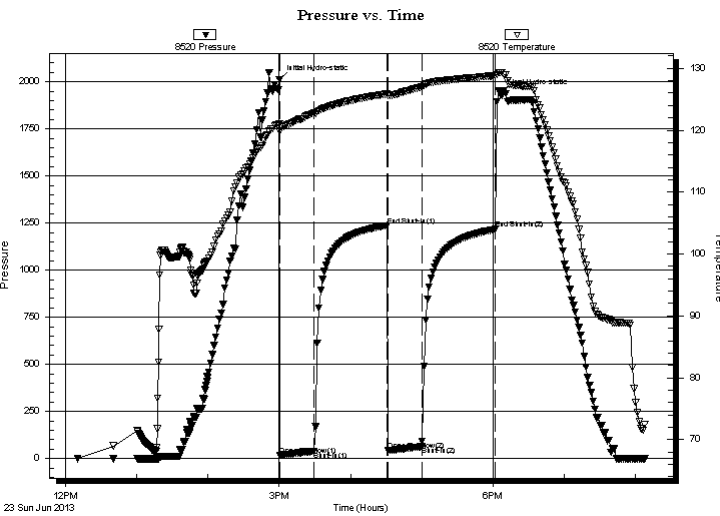
27-1s-37w Cheyenne, KS
Culwell 'A' #1-27
 Job Ticket: 52649 **DST#: 1**
 Test Start: 2013.06.23 @ 12:00:00

GENERAL INFORMATION:

Formation: **Oread**
 Deviated: No Whipstock: ft (KB)
 Test Type: Conventional Bottom Hole (Initial)
 Time Tool Opened: 15:00:30 Tester: Kevin Mack
 Time Test Ended: 20:08:00 Unit No: 66
 Interval: **4132.00 ft (KB) To 4189.00 ft (KB) (TVD)** Reference Elevations: 3304.00 ft (KB)
 Total Depth: 4189.00 ft (KB) (TVD) 3294.00 ft (CF)
 Hole Diameter: 7.88 inches Hole Condition: Good KB to GR/CF: 10.00 ft

Serial #: 8520 Outside
 Press @ Run Depth: 62.74 psig @ 4133.00 ft (KB) Capacity: 8000.00 psig
 Start Date: 2013.06.23 End Date: 2013.06.23 Last Calib.: 2013.06.23
 Start Time: 12:10:00 End Time: 20:08:00 Time On Btm: 2013.06.23 @ 15:00:00
 Time Off Btm: 2013.06.23 @ 18:06:30

TEST COMMENT: 30 - IF- 1/4" Blow built to 2"
 60 - IS- No Return
 30 - FF- Surface Blow started at 1 min. Built to 1"
 60 - FS- No Return



PRESSURE SUMMARY

Time (Min.)	Pressure (psig)	Temp (deg F)	Annotation
0	2012.61	121.11	Initial Hydro-static
1	16.69	119.81	Open To Flow (1)
29	37.27	122.82	Shut-In(1)
91	1236.78	125.87	End Shut-In(1)
92	42.53	125.57	Open To Flow (2)
120	62.74	126.99	Shut-In(2)
182	1216.78	128.83	End Shut-In(2)
187	1934.61	129.34	Final Hydro-static

Recovery

Length (ft)	Description	Volume (bbl)
90.00	OSM 100M (oil spots)	0.44

Gas Rates

Choke (inches)	Pressure (psig)	Gas Rate (Mcf/d)



**TRILOBITE
TESTING, INC.**

DRILL STEM TEST REPORT

TOOL DIAGRAM

Murfin Drilling Co
250 N Water STE #300
Wichita, KS 67202
ATTN: Wes Hansen

27-1s-37w Cheyenne, KS
Culwell 'A' #1-27
Job Ticket: 52649 **DST#: 1**
Test Start: 2013.06.23 @ 12:00:00

Tool Information

Drill Pipe:	Length: 3589.00 ft	Diameter: 3.80 inches	Volume: 50.34 bbl	Tool Weight: 2500.00 lb
Heavy Wt. Pipe:	Length: 0.00 ft	Diameter: 0.00 inches	Volume: 0.00 bbl	Weight set on Packer: 25000.00 lb
Drill Collar:	Length: 533.00 ft	Diameter: 2.25 inches	Volume: 2.62 bbl	Weight to Pull Loose: 80000.00 lb
			<u>Total Volume: 52.96 bbl</u>	Tool Chased ft
Drill Pipe Above KB:	18.00 ft			String Weight: Initial 75000.00 lb
Depth to Top Packer:	4132.00 ft			Final 75000.00 lb
Depth to Bottom Packer:	ft			
Interval between Packers:	57.00 ft			
Tool Length:	85.00 ft			
Number of Packers:	2	Diameter: 6.75 inches		

Tool Comments:

Tool Description	Length (ft)	Serial No.	Position	Depth (ft)	Accum. Lengths
-------------------------	--------------------	-------------------	-----------------	-------------------	-----------------------

Change Over Sub	1.00			4105.00	
Shut In Tool	5.00			4110.00	
Hydraulic tool	5.00			4115.00	
Jars	5.00			4120.00	
Safety Joint	3.00			4123.00	
Packer	5.00			4128.00	28.00 Bottom Of Top Packer
Packer	4.00			4132.00	
Stubb	1.00			4133.00	
Recorder	0.00	8354	Inside	4133.00	
Recorder	0.00	8520	Outside	4133.00	
Perforations	17.00			4150.00	
Change Over Sub	1.00			4151.00	
Drill Pipe	32.00			4183.00	
Change Over Sub	1.00			4184.00	
Bullnose	5.00			4189.00	57.00 Bottom Packers & Anchor

Total Tool Length: 85.00



**TRILOBITE
TESTING, INC.**

DRILL STEM TEST REPORT

FLUID SUMMARY

Murfin Drilling Co

27-1s-37w Cheyenne, KS

250 N Water STE #300
Wichita, KS 67202

Culwell 'A' #1-27

Job Ticket: 52649

DST#: 1

ATTN: Wes Hansen

Test Start: 2013.06.23 @ 12:00:00

Mud and Cushion Information

Mud Type: Gel Chem

Cushion Type:

Oil API:

deg API

Mud Weight: 9.00 lb/gal

Cushion Length:

ft

Water Salinity:

ppm

Viscosity: 65.00 sec/qt

Cushion Volume:

bbbl

Water Loss: 5.98 in³

Gas Cushion Type:

Resistivity: 0.00 ohm.m

Gas Cushion Pressure:

psig

Salinity: 500.00 ppm

Filter Cake: 2.00 inches

Recovery Information

Recovery Table

Length ft	Description	Volume bbl
90.00	OSM 100M (oil spots)	0.443

Total Length: 90.00 ft Total Volume: 0.443 bbl

Num Fluid Samples: 0

Num Gas Bombs: 0

Serial #:

Laboratory Name:

Laboratory Location:

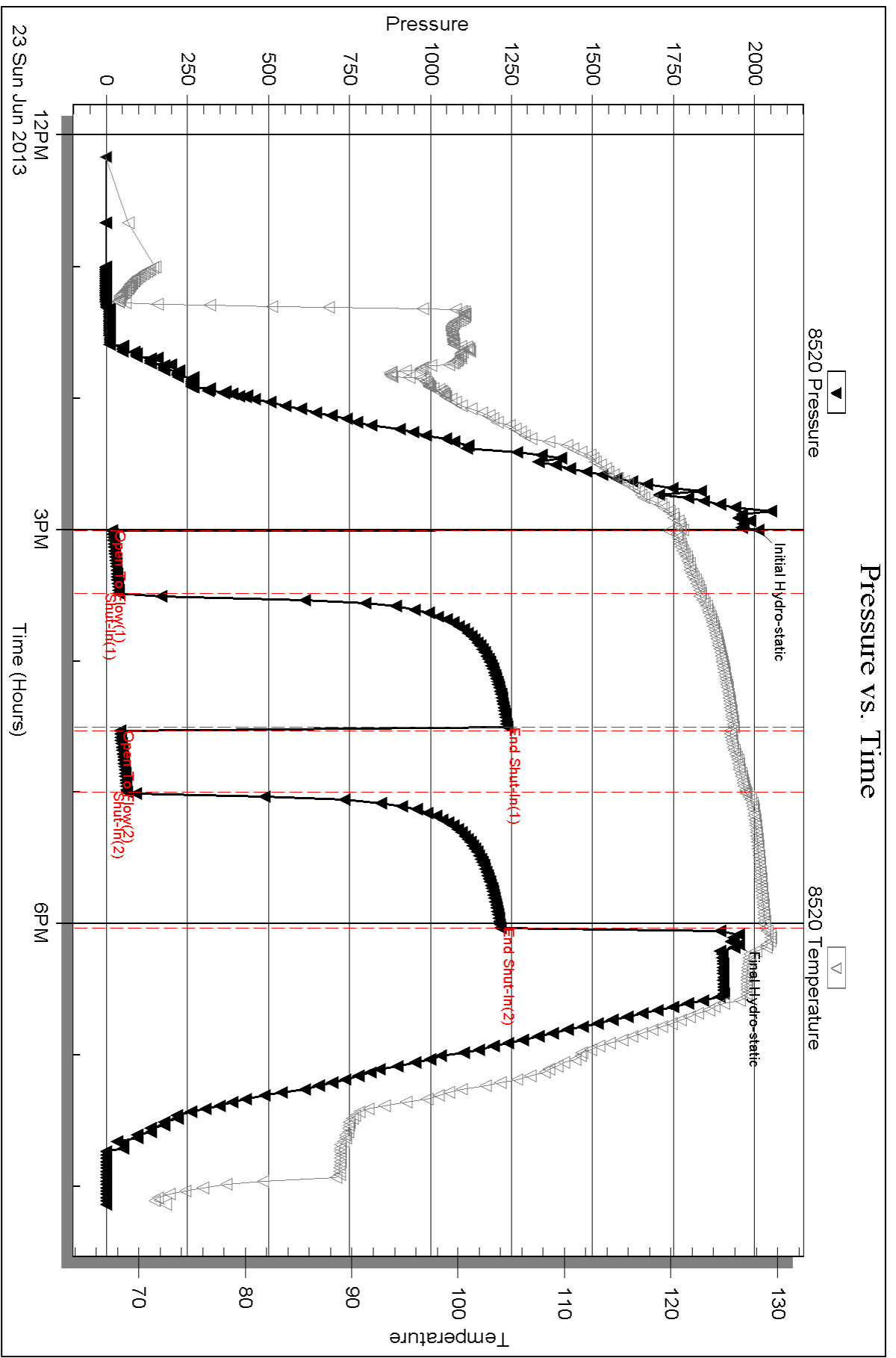
Recovery Comments:

Serial #: 8520

Outside Murfin Drilling Co

Oilwell 'A' #1-27

DST Test Number: 1



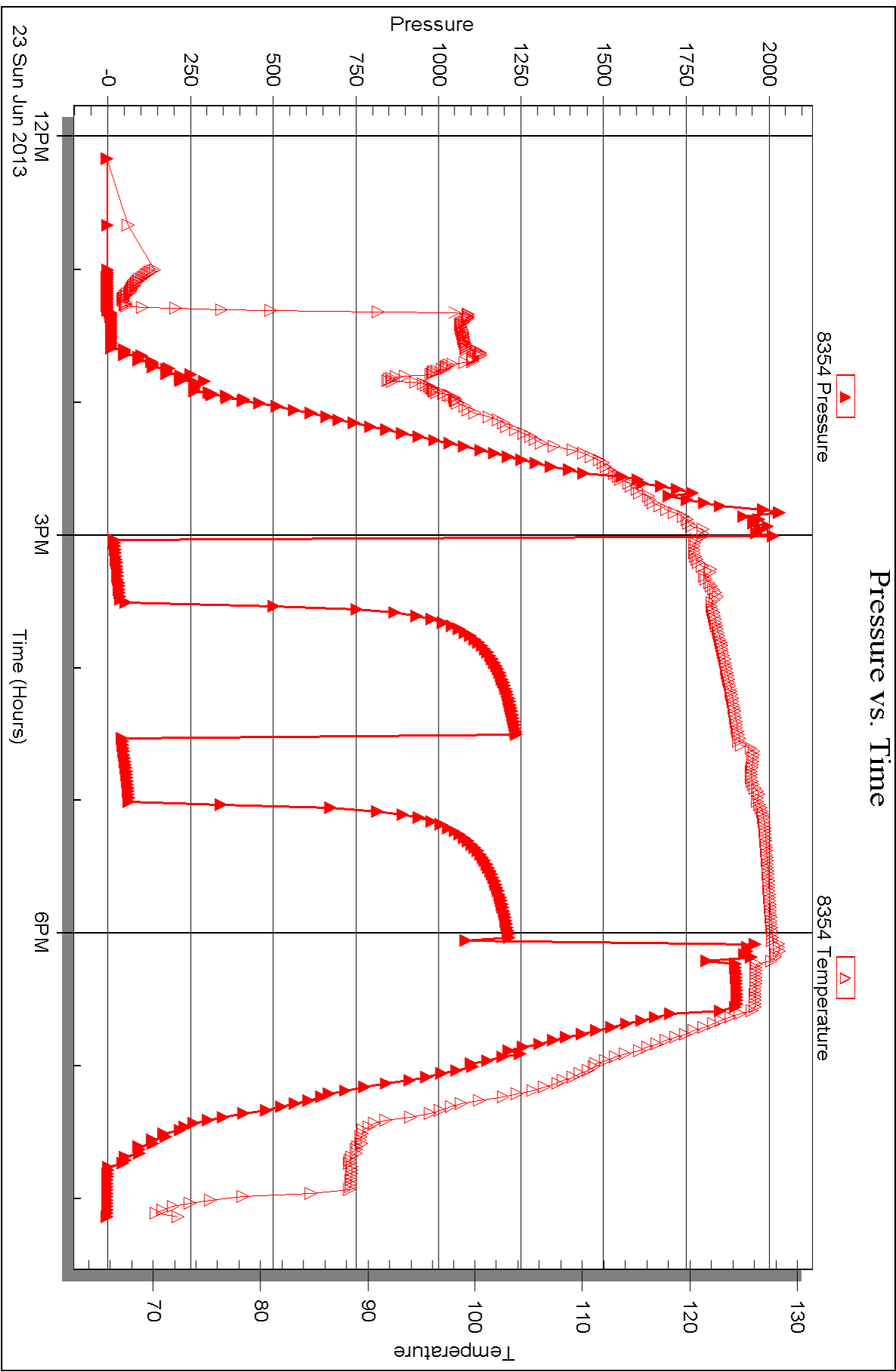
Serial #: 8354

Inside

Murfin Drilling Co

Oilwell 'A' #1-27

DST Test Number: 1





DRILL STEM TEST REPORT

Prepared For: **Murfin Drilling Co**
250 N Water STE #300
Wichita, KS 67202

ATTN: Wes Hansen

Culwell 'A' #1-27

27-1s-37w Cheyenne, KS

Start Date: 2013.06.23 @ 21:50:00

End Date: 2013.06.24 @ 06:38:30

Job Ticket #: 52650 DST #: 2

Trilobite Testing, Inc
PO Box 362 Hays, KS 67601
ph: 785-625-4778 fax: 785-625-5620

Printed: 2013.06.27 @ 15:21:39



TRILOBITE TESTING, INC.

DRILL STEM TEST REPORT

Murfin Drilling Co
 250 N Water STE #300
 Wichita, KS 67202
 ATTN: Wes Hansen

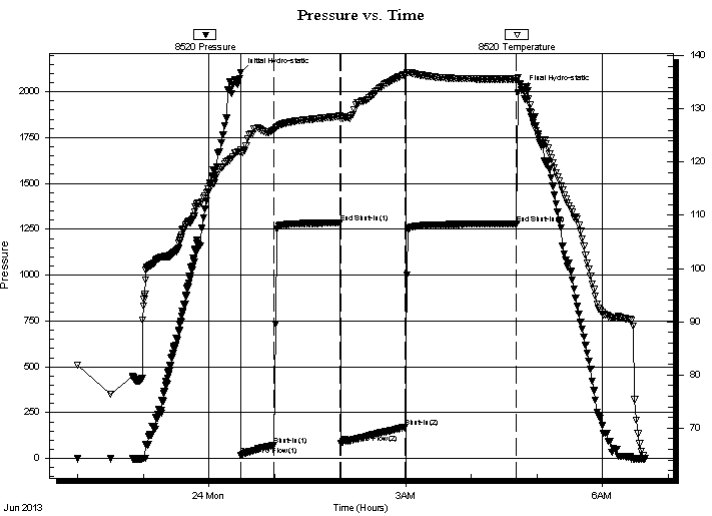
27-1s-37w Cheyenne, KS
Culwell 'A' #1-27
 Job Ticket: 52650 **DST#: 2**
 Test Start: 2013.06.23 @ 21:50:00

GENERAL INFORMATION:

Formation: **LKC "D"**
 Deviated: No Whipstock: ft (KB)
 Time Tool Opened: 00:29:30
 Time Test Ended: 06:38:30
 Interval: **4264.00 ft (KB) To 4330.00 ft (KB) (TVD)**
 Total Depth: 4330.00 ft (KB) (TVD)
 Hole Diameter: 7.88 inches Hole Condition: Good
 Test Type: Conventional Bottom Hole (Initial)
 Tester: Kevin Mack
 Unit No: 66
 Reference Elevations: 3304.00 ft (KB)
 3294.00 ft (CF)
 KB to GR/CF: 10.00 ft

Serial #: 8520 Outside
 Press @ Run Depth: 171.04 psig @ 4265.00 ft (KB) Capacity: 8000.00 psig
 Start Date: 2013.06.23 End Date: 2013.06.24 Last Calib.: 2013.06.24
 Start Time: 22:00:00 End Time: 06:38:30 Time On Btm: 2013.06.24 @ 00:29:00
 Time Off Btm: 2013.06.24 @ 04:46:00

TEST COMMENT: 30 - IF Blow built to 4"
 60 - IS- Surface Return started at 20 min. Built to 3/4"
 60 - FF- Blow built to 5"
 90 - FS- No Return



PRESSURE SUMMARY

Time (Min.)	Pressure (psig)	Temp (deg F)	Annotation
0	2105.31	122.29	Initial Hydro-static
1	19.55	121.83	Open To Flow (1)
31	72.87	126.04	Shut-In(1)
91	1284.66	128.64	End Shut-In(1)
92	81.75	128.24	Open To Flow (2)
151	171.04	136.52	Shut-In(2)
253	1281.09	135.62	End Shut-In(2)
257	2009.21	134.21	Final Hydro-static

Recovery

Length (ft)	Description	Volume (bbl)
180.00	OSMW 50M50W (oil spots)	0.89
100.00	OSM 100M (oil spots)	0.49

Gas Rates

	Choke (inches)	Pressure (psig)	Gas Rate (Mcf/d)



**TRILOBITE
TESTING, INC.**

DRILL STEM TEST REPORT

TOOL DIAGRAM

Murfin Drilling Co
250 N Water STE #300
Wichita, KS 67202
ATTN: Wes Hansen

27-1s-37w Cheyenne, KS
Culwell 'A' #1-27
Job Ticket: 52650 **DST#: 2**
Test Start: 2013.06.23 @ 21:50:00

Tool Information

Drill Pipe:	Length: 3718.00 ft	Diameter: 3.80 inches	Volume: 52.15 bbl	Tool Weight: 2500.00 lb
Heavy Wt. Pipe:	Length: 0.00 ft	Diameter: 0.00 inches	Volume: 0.00 bbl	Weight set on Packer: 25000.00 lb
Drill Collar:	Length: 533.00 ft	Diameter: 2.25 inches	Volume: 2.62 bbl	Weight to Pull Loose: 90000.00 lb
			<u>Total Volume: 54.77 bbl</u>	Tool Chased ft
Drill Pipe Above KB:	15.00 ft			String Weight: Initial 72000.00 lb
Depth to Top Packer:	4264.00 ft			Final 78000.00 lb
Depth to Bottom Packer:	ft			
Interval between Packers:	66.00 ft			
Tool Length:	94.00 ft			
Number of Packers:	2	Diameter: 6.75 inches		

Tool Comments:

Tool Description	Length (ft)	Serial No.	Position	Depth (ft)	Accum. Lengths
-------------------------	--------------------	-------------------	-----------------	-------------------	-----------------------

Change Over Sub	1.00			4237.00	
Shut In Tool	5.00			4242.00	
Hydraulic tool	5.00			4247.00	
Jars	5.00			4252.00	
Safety Joint	3.00			4255.00	
Packer	5.00			4260.00	28.00 Bottom Of Top Packer
Packer	4.00			4264.00	
Stubb	1.00			4265.00	
Recorder	0.00	8354	Inside	4265.00	
Recorder	0.00	8520	Outside	4265.00	
Perforations	26.00			4291.00	
Change Over Sub	1.00			4292.00	
Drill Pipe	32.00			4324.00	
Change Over Sub	1.00			4325.00	
Bullnose	5.00			4330.00	66.00 Bottom Packers & Anchor

Total Tool Length: 94.00



**TRILOBITE
TESTING, INC.**

DRILL STEM TEST REPORT

FLUID SUMMARY

Murfin Drilling Co
250 N Water STE #300
Wichita, KS 67202
ATTN: Wes Hansen

27-1s-37w Cheyenne, KS
Culwell 'A' #1-27
Job Ticket: 52650 **DST#: 2**
Test Start: 2013.06.23 @ 21:50:00

Mud and Cushion Information

Mud Type: Gel Chem	Cushion Type:	Oil API:	deg API
Mud Weight: 9.00 lb/gal	Cushion Length: ft	Water Salinity:	28000 ppm
Viscosity: 59.00 sec/qt	Cushion Volume: bbl		
Water Loss: 6.78 in ³	Gas Cushion Type:		
Resistivity: 0.00 ohm.m	Gas Cushion Pressure: psig		
Salinity: 600.00 ppm			
Filter Cake: 2.00 inches			

Recovery Information

Recovery Table

Length ft	Description	Volume bbl
180.00	OSMW 50M 50W (oil spots)	0.885
100.00	OSM 100M (oil spots)	0.492

Total Length: 280.00 ft Total Volume: 1.377 bbl

Num Fluid Samples: 0 Num Gas Bombs: 0 Serial #:

Laboratory Name: Laboratory Location:

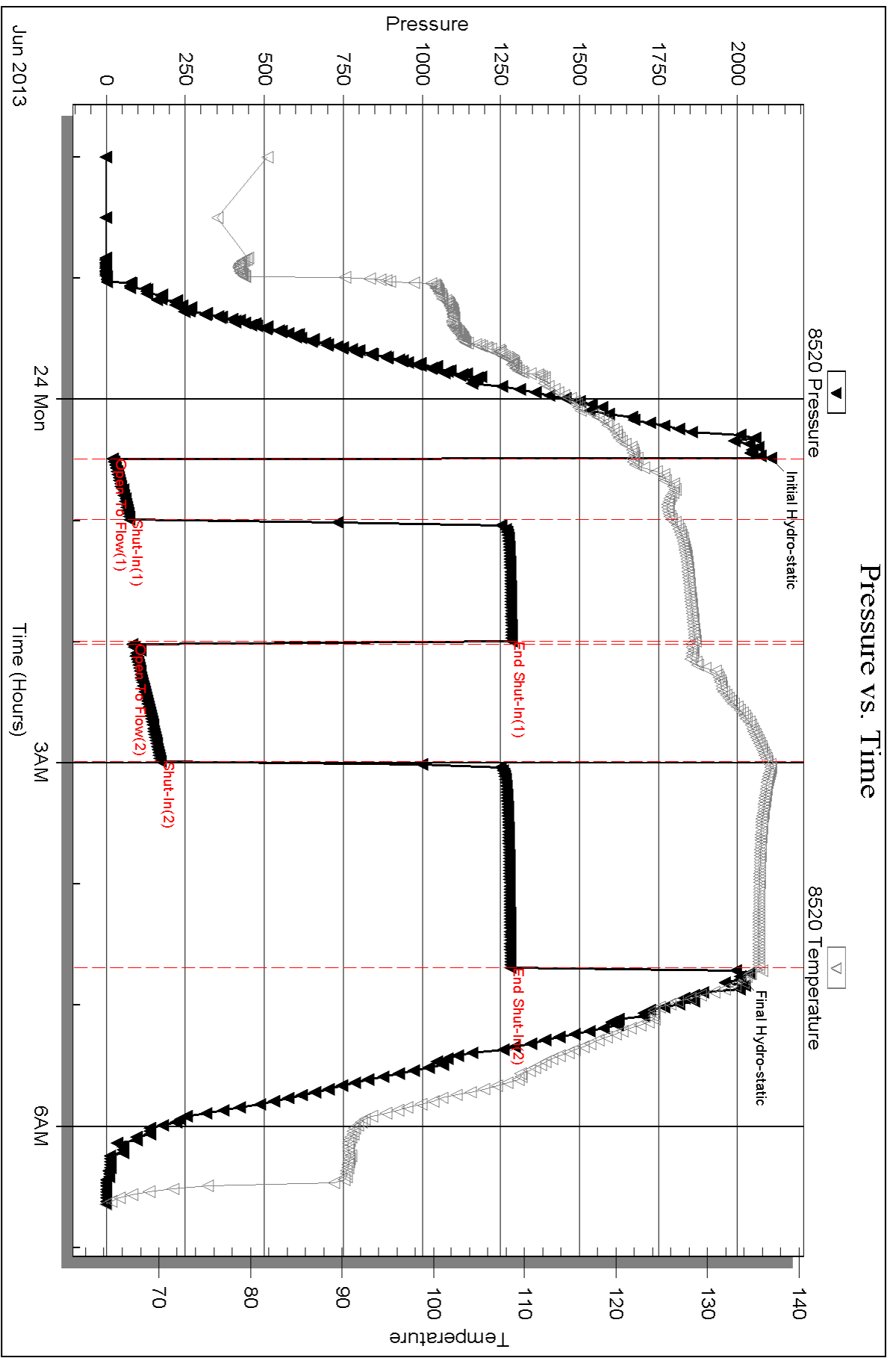
Recovery Comments: RW = .25 @ 71 deg = 28000ppm

Serial #: 8520

Outside Murfin Drilling Co

Oilwell 'A' #1-27

DST Test Number: 2



Triobite Testing, Inc

Ref. No: 52650

Printed: 2013.06.27 @ 15:21:42

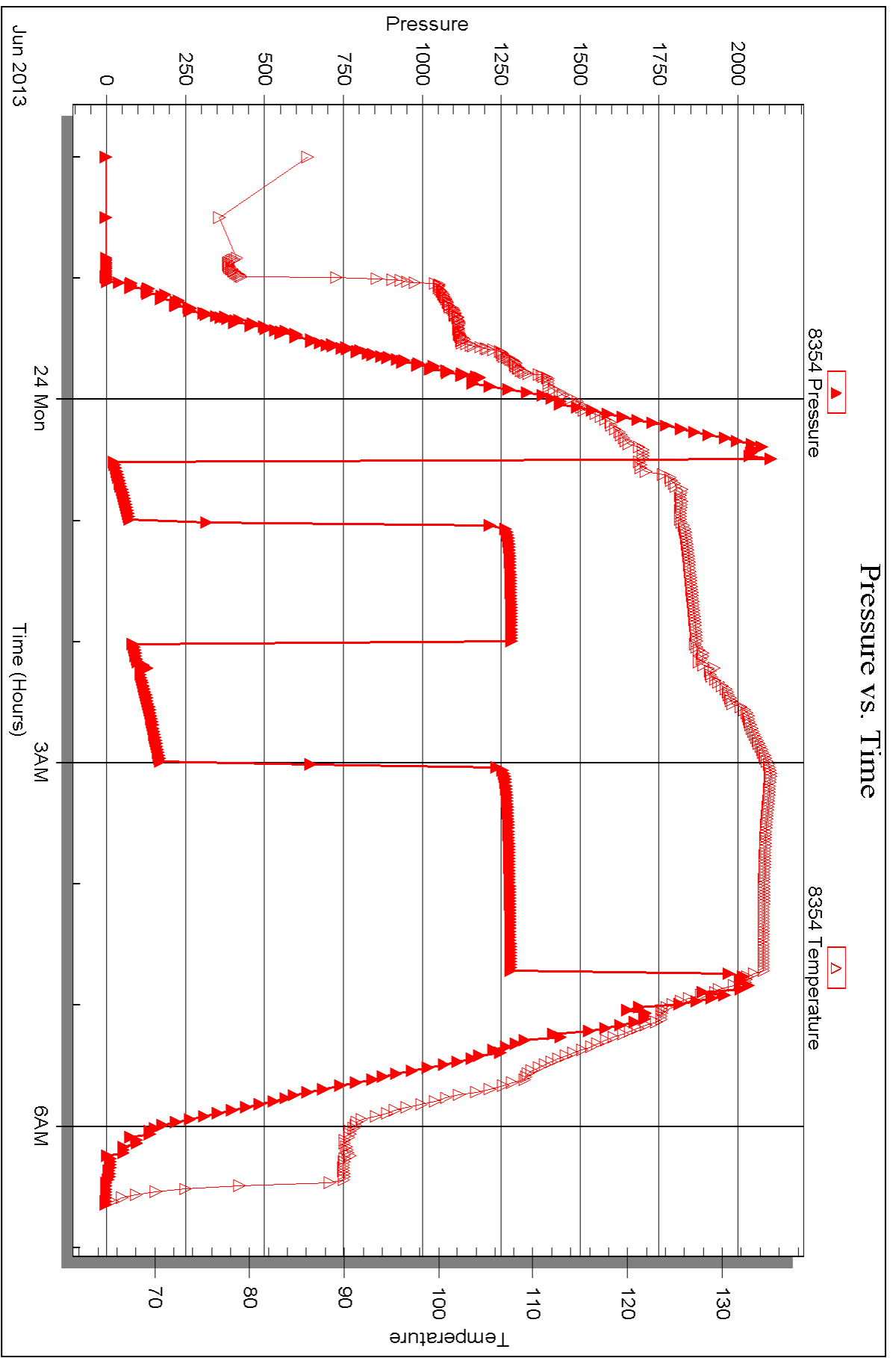
Serial #: 8354

Inside

Murfin Drilling Co

Oilwell 'A' #1-27

DST Test Number: 2



Triobite Testing, Inc

Ref. No: 52650

Printed: 2013.06.27 @ 15:21:43



DRILL STEM TEST REPORT

Prepared For: **Murfin Drilling Co**

250 N Water STE #300
Wichita, KS 67202

ATTN: Wes Hansen

Culwell 'A' #1-27

27-1s-37w Cheyenne, KS

Start Date: 2013.06.24 @ 20:05:00

End Date: 2013.06.25 @ 03:30:30

Job Ticket #: 51219 DST #: 3

Trilobite Testing, Inc

PO Box 362 Hays, KS 67601

ph: 785-625-4778 fax: 785-625-5620

Printed: 2013.06.27 @ 15:21:00



**TRILOBITE
TESTING, INC.**

DRILL STEM TEST REPORT

Murfin Drilling Co
250 N Water STE #300
Wichita, KS 67202
ATTN: Wes Hansen

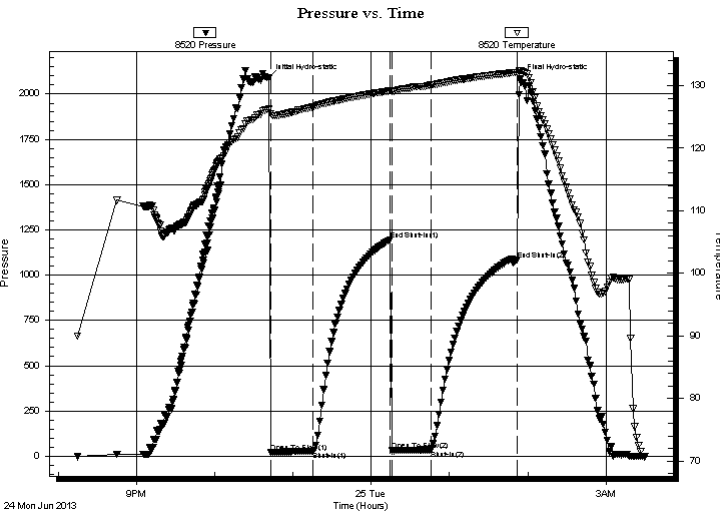
27-1s-37w Cheyenne, KS
Culwell 'A' #1-27
Job Ticket: 51219 **DST#: 3**
Test Start: 2013.06.24 @ 20:05:00

GENERAL INFORMATION:

Formation: **LKC "G-I"**
Deviated: No Whipstock: ft (KB)
Time Tool Opened: 22:43:00
Time Test Ended: 03:30:30
Interval: **4330.00 ft (KB) To 4430.00 ft (KB) (TVD)**
Total Depth: 4430.00 ft (KB) (TVD)
Hole Diameter: 7.88 inches Hole Condition: Good
Test Type: Conventional Bottom Hole (Initial)
Tester: Kevin Mack
Unit No: 66
Reference Elevations: 3304.00 ft (KB)
3294.00 ft (CF)
KB to GR/CF: 10.00 ft

Serial #: 8520 Outside
Press @ Run Depth: 35.42 psig @ 4331.00 ft (KB) Capacity: 8000.00 psig
Start Date: 2013.06.24 End Date: 2013.06.25 Last Calib.: 2013.06.25
Start Time: 20:15:00 End Time: 03:30:30 Time On Btm: 2013.06.24 @ 22:41:30
Time Off Btm: 2013.06.25 @ 01:54:00

TEST COMMENT: 30 - IF- 1/4" Blow built to 3/4"
60 - IS- No Return
30 - FF- No Blow
60 - FS- No Return



PRESSURE SUMMARY

Time (Min.)	Pressure (psig)	Temp (deg F)	Annotation
0	2088.26	126.24	Initial Hydro-static
2	20.97	125.54	Open To Flow (1)
34	27.87	126.63	Shut-In(1)
93	1194.63	129.20	End Shut-In(1)
95	30.77	129.01	Open To Flow (2)
124	35.42	130.08	Shut-In(2)
191	1085.78	132.15	End Shut-In(2)
193	2083.19	132.39	Final Hydro-static

Recovery

Length (ft)	Description	Volume (bbl)
10.00	Mud 100M	0.05

Gas Rates

Choke (inches)	Pressure (psig)	Gas Rate (Mcf/d)



**TRILOBITE
TESTING, INC.**

DRILL STEM TEST REPORT

TOOL DIAGRAM

Murfin Drilling Co
250 N Water STE #300
Wichita, KS 67202
ATTN: Wes Hansen

27-1s-37w Cheyenne, KS
Culwell 'A' #1-27
Job Ticket: 51219 **DST#: 3**
Test Start: 2013.06.24 @ 20:05:00

Tool Information

Drill Pipe:	Length: 3809.00 ft	Diameter: 3.80 inches	Volume: 53.43 bbl	Tool Weight: 2500.00 lb
Heavy Wt. Pipe:	Length: 0.00 ft	Diameter: 0.00 inches	Volume: 0.00 bbl	Weight set on Packer: 25000.00 lb
Drill Collar:	Length: 533.00 ft	Diameter: 2.25 inches	Volume: 2.62 bbl	Weight to Pull Loose: 90000.00 lb
			<u>Total Volume: 56.05 bbl</u>	Tool Chased ft
Drill Pipe Above KB:	40.00 ft			String Weight: Initial 75000.00 lb
Depth to Top Packer:	4330.00 ft			Final 75000.00 lb
Depth to Bottom Packer:	ft			
Interval between Packers:	100.00 ft			
Tool Length:	128.00 ft			
Number of Packers:	2	Diameter: 6.75 inches		

Tool Comments:

Tool Description	Length (ft)	Serial No.	Position	Depth (ft)	Accum. Lengths
-------------------------	--------------------	-------------------	-----------------	-------------------	-----------------------

Change Over Sub	1.00			4303.00	
Shut In Tool	5.00			4308.00	
Hydraulic tool	5.00			4313.00	
Jars	5.00			4318.00	
Safety Joint	3.00			4321.00	
Packer	5.00			4326.00	28.00 Bottom Of Top Packer
Packer	4.00			4330.00	
Stubb	1.00			4331.00	
Recorder	0.00	8354	Inside	4331.00	
Recorder	0.00	8520	Outside	4331.00	
Perforations	28.00			4359.00	
Change Over Sub	1.00			4360.00	
Drill Pipe	64.00			4424.00	
Change Over Sub	1.00			4425.00	
Bullnose	5.00			4430.00	100.00 Bottom Packers & Anchor

Total Tool Length: 128.00



**TRILOBITE
TESTING, INC.**

DRILL STEM TEST REPORT

FLUID SUMMARY

Murfin Drilling Co
250 N Water STE #300
Wichita, KS 67202
ATTN: Wes Hansen

27-1s-37w Cheyenne, KS
Culwell 'A' #1-27
Job Ticket: 51219 **DST#: 3**
Test Start: 2013.06.24 @ 20:05:00

Mud and Cushion Information

Mud Type: Gel Chem	Cushion Type:	Oil API:	deg API
Mud Weight: 9.00 lb/gal	Cushion Length: ft	Water Salinity:	ppm
Viscosity: 69.00 sec/qt	Cushion Volume: bbl		
Water Loss: 6.79 in ³	Gas Cushion Type:		
Resistivity: 0.00 ohm.m	Gas Cushion Pressure: psig		
Salinity: 600.00 ppm			
Filter Cake: 2.00 inches			

Recovery Information

Recovery Table

Length ft	Description	Volume bbl
10.00	Mud 100M	0.049

Total Length: 10.00 ft Total Volume: 0.049 bbl
 Num Fluid Samples: 0 Num Gas Bombs: 0 Serial #:
 Laboratory Name: Laboratory Location:
 Recovery Comments:

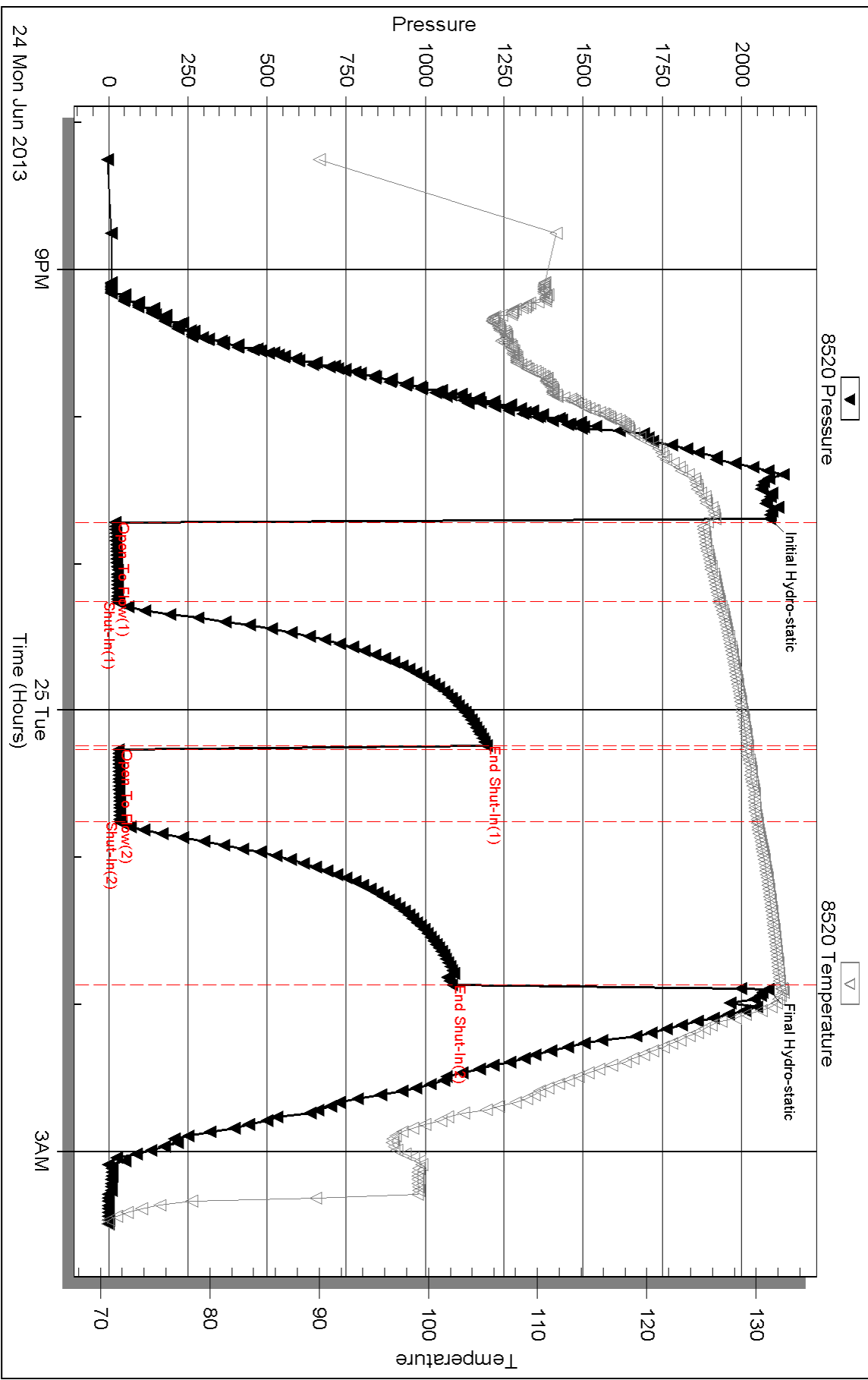
Serial #: 8520

Outside Murfin Drilling Co

Oilwell 'A' #1-27

DST Test Number: 3

Pressure vs. Time





DRILL STEM TEST REPORT

Prepared For: **Murfin Drilling Co**

250 N Water STE #300
Wichita, KS 67202

ATTN: Wes Hansen

Culwell 'A' #1-27

27-1s-37w Cheyenne, KS

Start Date: 2013.06.25 @ 11:10:00

End Date: 2013.06.25 @ 18:38:30

Job Ticket #: 51220 DST #: 4

Trilobite Testing, Inc

PO Box 362 Hays, KS 67601

ph: 785-625-4778 fax: 785-625-5620

Printed: 2013.06.27 @ 15:20:20

Murfin Drilling Co
27-1s-37w Cheyenne, KS
Culwell 'A' #1-27
DST # 4
LKC "J"
2013.06.25



**TRILOBITE
TESTING, INC.**

DRILL STEM TEST REPORT

Murfin Drilling Co
250 N Water STE #300
Wichita, KS 67202
ATTN: Wes Hansen

27-1s-37w Cheyenne, KS
Culwell 'A' #1-27
Job Ticket: 51220 **DST#: 4**
Test Start: 2013.06.25 @ 11:10:00

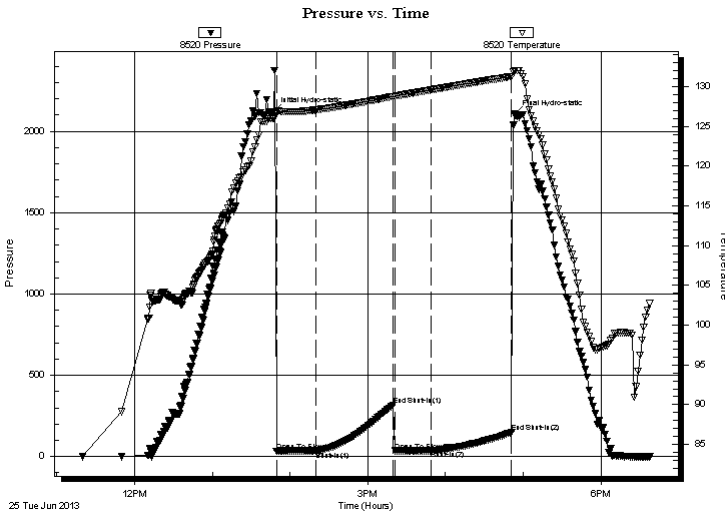
GENERAL INFORMATION:

Formation: **LKC "J"**
Deviated: No Whipstock: ft (KB)
Time Tool Opened: 13:49:30
Time Test Ended: 18:38:30
Interval: **4424.00 ft (KB) To 4427.00 ft (KB) (TVD)**
Total Depth: 4474.00 ft (KB) (TVD)
Hole Diameter: 7.88 inches Hole Condition: Good
Test Type: Conventional Bottom Hole (Initial)
Tester: Kevin Mack
Unit No: 66
Reference Elevations: 3304.00 ft (KB)
3294.00 ft (CF)
KB to GR/CF: 10.00 ft

Serial #: 8520 Outside
Press @ Run Depth: 36.06 psig @ 4425.00 ft (KB) Capacity: 8000.00 psig
Start Date: 2013.06.25 End Date: 2013.06.25 Last Calib.: 2013.06.25
Start Time: 11:20:00 End Time: 18:38:30 Time On Btm: 2013.06.25 @ 13:47:30
Time Off Btm: 2013.06.25 @ 16:53:30

TEST COMMENT: 30 - IF- 1/4" Blow Died in 25 min.
60 - IS- No Return
30 - FF- No Blow
60 - FS- No Return

PRESSURE SUMMARY



Time (Min.)	Pressure (psig)	Temp (deg F)	Annotation
0	2122.59	125.97	Initial Hydro-static
2	34.01	126.89	Open To Flow (1)
33	35.21	127.09	Shut-In(1)
92	316.73	128.79	End Shut-In(1)
94	35.41	128.78	Open To Flow (2)
122	36.06	129.61	Shut-In(2)
184	149.91	131.31	End Shut-In(2)
186	2105.54	132.06	Final Hydro-static

Recovery

Length (ft)	Description	Volume (bbl)
20.00	Mud 100M	0.10

Gas Rates

Choke (inches)	Pressure (psig)	Gas Rate (Mcf/d)



**TRILOBITE
TESTING, INC.**

DRILL STEM TEST REPORT

TOOL DIAGRAM

Murfin Drilling Co
250 N Water STE #300
Wichita, KS 67202
ATTN: Wes Hansen

27-1s-37w Cheyenne, KS
Culwell 'A' #1-27
Job Ticket: 51220 **DST#: 4**
Test Start: 2013.06.25 @ 11:10:00

Tool Information

Drill Pipe:	Length: 3868.00 ft	Diameter: 3.80 inches	Volume: 54.26 bbl	Tool Weight:	2500.00 lb
Heavy Wt. Pipe:	Length: 0.00 ft	Diameter: 0.00 inches	Volume: 0.00 bbl	Weight set on Packer:	25000.00 lb
Drill Collar:	Length: 533.00 ft	Diameter: 2.25 inches	Volume: 2.62 bbl	Weight to Pull Loose:	80000.00 lb
			<u>Total Volume: 56.88 bbl</u>	Tool Chased	5.00 ft
Drill Pipe Above KB:	5.00 ft			String Weight: Initial	75000.00 lb
Depth to Top Packer:	4424.00 ft			Final	75000.00 lb
Depth to Bottom Packer:	ft				
Interval between Packers:	50.00 ft				
Tool Length:	78.00 ft				
Number of Packers:	2	Diameter:	6.75 inches		

Tool Comments: Bled off initial Surge from tool opening prematurely.

Tool Description	Length (ft)	Serial No.	Position	Depth (ft)	Accum. Lengths
Change Over Sub	1.00			4397.00	
Shut In Tool	5.00			4402.00	
Hydraulic tool	5.00			4407.00	
Jars	5.00			4412.00	
Safety Joint	3.00			4415.00	
Packer	5.00			4420.00	28.00 Bottom Of Top Packer
Packer	4.00			4424.00	
Stubb	1.00			4425.00	
Recorder	0.00	8354	Inside	4425.00	
Recorder	0.00	8520	Outside	4425.00	
Perforations	10.00			4435.00	
Change Over Sub	1.00			4436.00	
Drill Pipe	32.00			4468.00	
Change Over Sub	1.00			4469.00	
Bullnose	5.00			4474.00	50.00 Bottom Packers & Anchor

Total Tool Length: 78.00



**TRILOBITE
TESTING, INC.**

DRILL STEM TEST REPORT

FLUID SUMMARY

Murfin Drilling Co
250 N Water STE #300
Wichita, KS 67202
ATTN: Wes Hansen

27-1s-37w Cheyenne, KS
Culwell 'A' #1-27
Job Ticket: 51220 **DST#: 4**
Test Start: 2013.06.25 @ 11:10:00

Mud and Cushion Information

Mud Type: Gel Chem	Cushion Type:	Oil API:	deg API
Mud Weight: 9.00 lb/gal	Cushion Length: ft	Water Salinity:	ppm
Viscosity: 65.00 sec/qt	Cushion Volume: bbl		
Water Loss: 5.99 in ³	Gas Cushion Type:		
Resistivity: 0.00 ohm.m	Gas Cushion Pressure: psig		
Salinity: 1000.00 ppm			
Filter Cake: 2.00 inches			

Recovery Information

Recovery Table

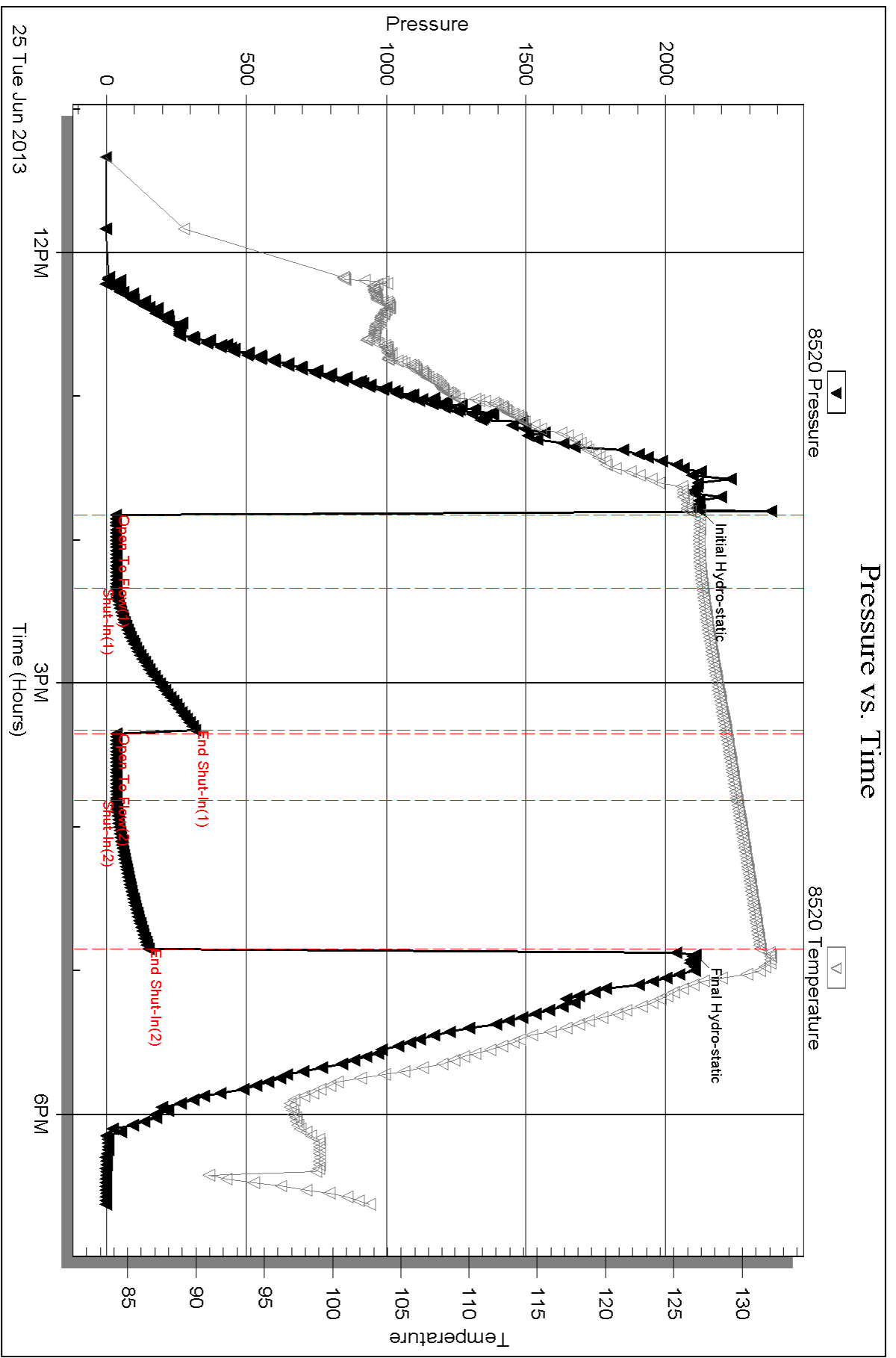
Length ft	Description	Volume bbl
20.00	Mud 100M	0.098

Total Length: 20.00 ft Total Volume: 0.098 bbl

Num Fluid Samples: 0 Num Gas Bombs: 0 Serial #:

Laboratory Name: Laboratory Location:

Recovery Comments:



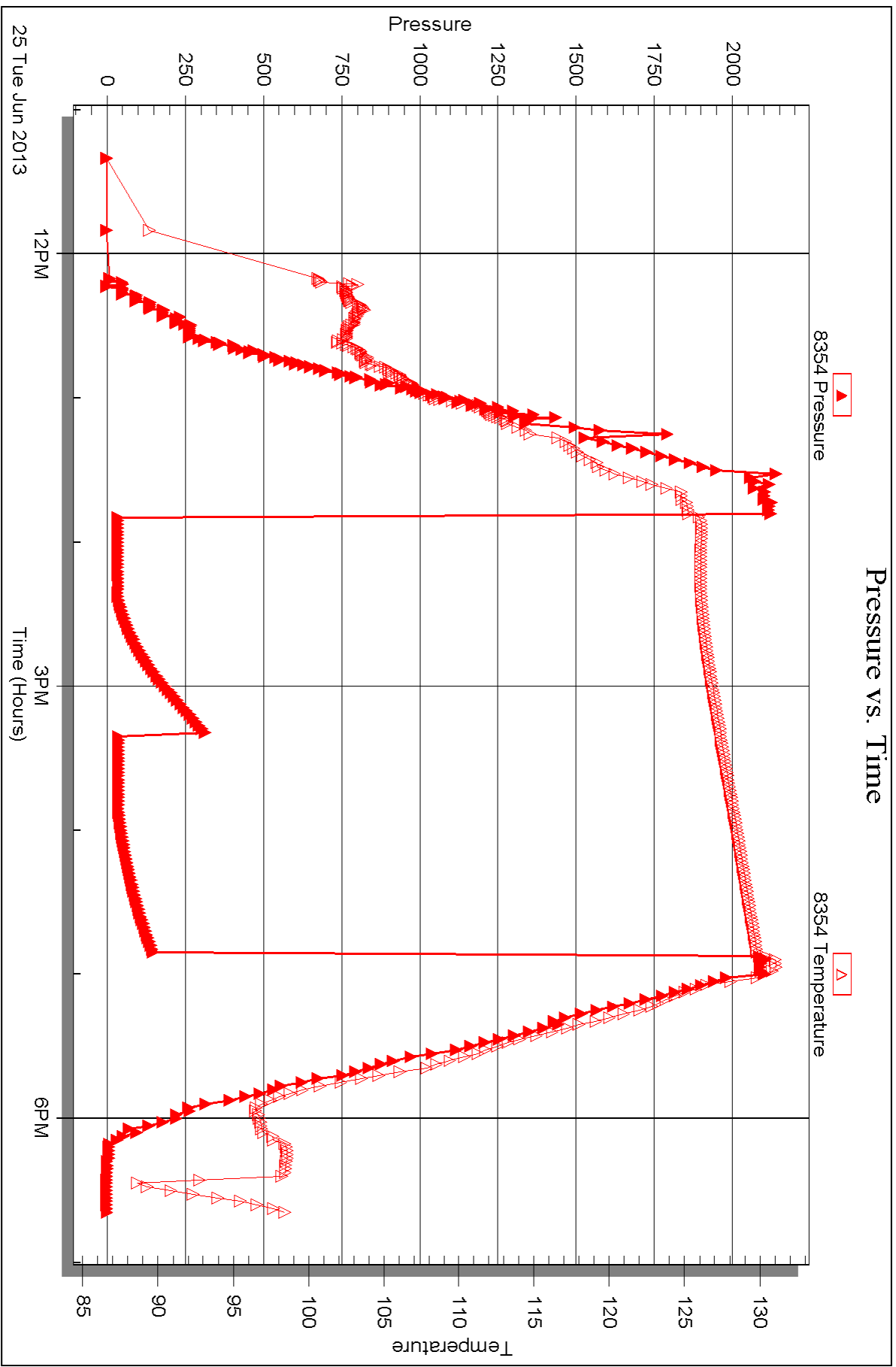
Serial #: 8354

Inside

Murfin Drilling Co

Oilwell 'A' #1-27

DST Test Number: 4



Triobite Testing, Inc

Ref. No: 51220

Printed: 2013.06.27 @ 15:20:23



DRILL STEM TEST REPORT

Prepared For: **Murfin Drilling Co**
250 N Water STE #300
Wichita, KS 67202

ATTN: Wes Hansen

Culwell 'A' #1-27

27-1s-37w Cheyenne, KS

Start Date: 2013.06.26 @ 17:50:00

End Date: 2013.06.27 @ 01:19:00

Job Ticket #: 52131 DST #: 5

Trilobite Testing, Inc
PO Box 362 Hays, KS 67601
ph: 785-625-4778 fax: 785-625-5620

Printed: 2013.06.27 @ 15:19:27



TRILOBITE TESTING, INC.

DRILL STEM TEST REPORT

Murfin Drilling Co
 250 N Water STE #300
 Wichita, KS 67202
 ATTN: Wes Hansen

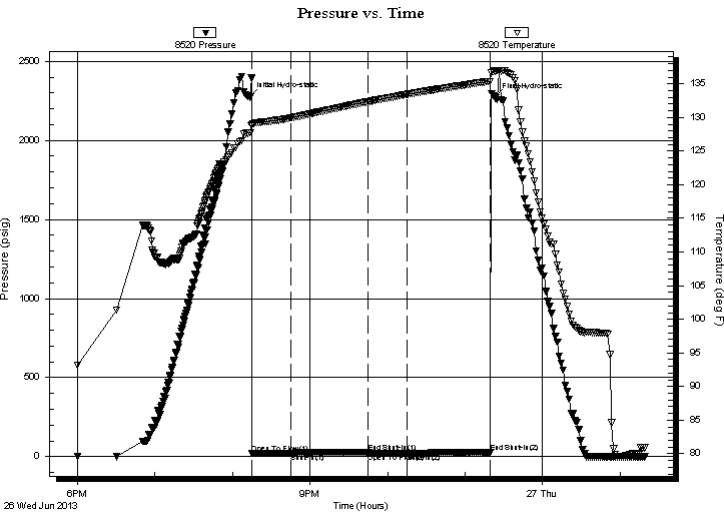
27-1s-37w Cheyenne, KS
Culwell 'A' #1-27
 Job Ticket: 52131 **DST#: 5**
 Test Start: 2013.06.26 @ 17:50:00

GENERAL INFORMATION:

Formation: **Pawnee**
 Deviated: No Whipstock: ft (KB)
 Time Tool Opened: 20:15:00
 Time Test Ended: 01:19:00
 Interval: **4625.00 ft (KB) To 4670.00 ft (KB) (TVD)**
 Total Depth: 4670.00 ft (KB) (TVD)
 Hole Diameter: 7.88 inches Hole Condition: Good
 Test Type: Conventional Bottom Hole (Initial)
 Tester: Kevin Mack
 Unit No: 66
 Reference Elevations: 3304.00 ft (KB)
 3294.00 ft (CF)
 KB to GR/CF: 10.00 ft

Serial #: 8520 Outside
 Press @ Run Depth: 22.86 psig @ 4626.00 ft (KB) Capacity: 8000.00 psig
 Start Date: 2013.06.26 End Date: 2013.06.27 Last Calib.: 2013.06.27
 Start Time: 18:00:00 End Time: 01:19:00 Time On Btm: 2013.06.26 @ 20:13:30
 Time Off Btm: 2013.06.26 @ 23:23:00

TEST COMMENT: 30 - IF- 1/4" Blow died back to 1/8"
 60 - IS- No Return
 30 - FF- No Blow
 60 - FS- No Return



PRESSURE SUMMARY

Time (Min.)	Pressure (psig)	Temp (deg F)	Annotation
0	2274.58	127.75	Initial Hydro-static
2	20.60	128.85	Open To Flow (1)
32	21.19	129.94	Shut-In(1)
91	29.54	132.35	End Shut-In(1)
92	21.39	132.36	Open To Flow (2)
122	22.86	133.43	Shut-In(2)
186	24.54	135.39	End Shut-In(2)
190	2273.79	136.90	Final Hydro-static

Recovery

Length (ft)	Description	Volume (bbl)
5.00	Mud 100M	0.02

Gas Rates

Choke (inches)	Pressure (psig)	Gas Rate (Mcf/d)



**TRILOBITE
TESTING, INC.**

DRILL STEM TEST REPORT

TOOL DIAGRAM

Murfin Drilling Co
250 N Water STE #300
Wichita, KS 67202
ATTN: Wes Hansen

27-1s-37w Cheyenne, KS
Culwell 'A' #1-27
Job Ticket: 52131 **DST#: 5**
Test Start: 2013.06.26 @ 17:50:00

Tool Information

Drill Pipe:	Length: 4089.00 ft	Diameter: 3.80 inches	Volume: 57.36 bbl	Tool Weight: 2500.00 lb
Heavy Wt. Pipe:	Length: 0.00 ft	Diameter: 0.00 inches	Volume: 0.00 bbl	Weight set on Packer: 25000.00 lb
Drill Collar:	Length: 533.00 ft	Diameter: 2.25 inches	Volume: 2.62 bbl	Weight to Pull Loose: 95000.00 lb
			<u>Total Volume: 59.98 bbl</u>	Tool Chased ft
Drill Pipe Above KB:	25.00 ft			String Weight: Initial 80000.00 lb
Depth to Top Packer:	4625.00 ft			Final 80000.00 lb
Depth to Bottom Packer:	ft			
Interval between Packers:	45.00 ft			
Tool Length:	73.00 ft			
Number of Packers:	2	Diameter: 6.75 inches		

Tool Comments:

Tool Description	Length (ft)	Serial No.	Position	Depth (ft)	Accum. Lengths
-------------------------	--------------------	-------------------	-----------------	-------------------	-----------------------

Change Over Sub	1.00			4598.00	
Shut In Tool	5.00			4603.00	
Hydraulic tool	5.00			4608.00	
Jars	5.00			4613.00	
Safety Joint	3.00			4616.00	
Packer	5.00			4621.00	28.00 Bottom Of Top Packer
Packer	4.00			4625.00	
Stubb	1.00			4626.00	
Recorder	0.00	8354	Inside	4626.00	
Recorder	0.00	8520	Outside	4626.00	
Perforations	5.00			4631.00	
Change Over Sub	1.00			4632.00	
Drill Pipe	32.00			4664.00	
Change Over Sub	1.00			4665.00	
Bullnose	5.00			4670.00	45.00 Bottom Packers & Anchor

Total Tool Length: 73.00



**TRILOBITE
TESTING, INC.**

DRILL STEM TEST REPORT

FLUID SUMMARY

Murfin Drilling Co
250 N Water STE #300
Wichita, KS 67202
ATTN: Wes Hansen

27-1s-37w Cheyenne, KS
Culwell 'A' #1-27
Job Ticket: 52131 **DST#: 5**
Test Start: 2013.06.26 @ 17:50:00

Mud and Cushion Information

Mud Type: Gel Chem	Cushion Type:	Oil API:	deg API
Mud Weight: 9.00 lb/gal	Cushion Length: ft	Water Salinity:	ppm
Viscosity: 69.00 sec/qt	Cushion Volume: bbl		
Water Loss: 6.79 in ³	Gas Cushion Type:		
Resistivity: 0.00 ohm.m	Gas Cushion Pressure: psig		
Salinity: 1000.00 ppm			
Filter Cake: 2.00 inches			

Recovery Information

Recovery Table

Length ft	Description	Volume bbl
5.00	Mud 100M	0.025

Total Length: 5.00 ft Total Volume: 0.025 bbl

Num Fluid Samples: 0 Num Gas Bombs: 0 Serial #:

Laboratory Name: Laboratory Location:

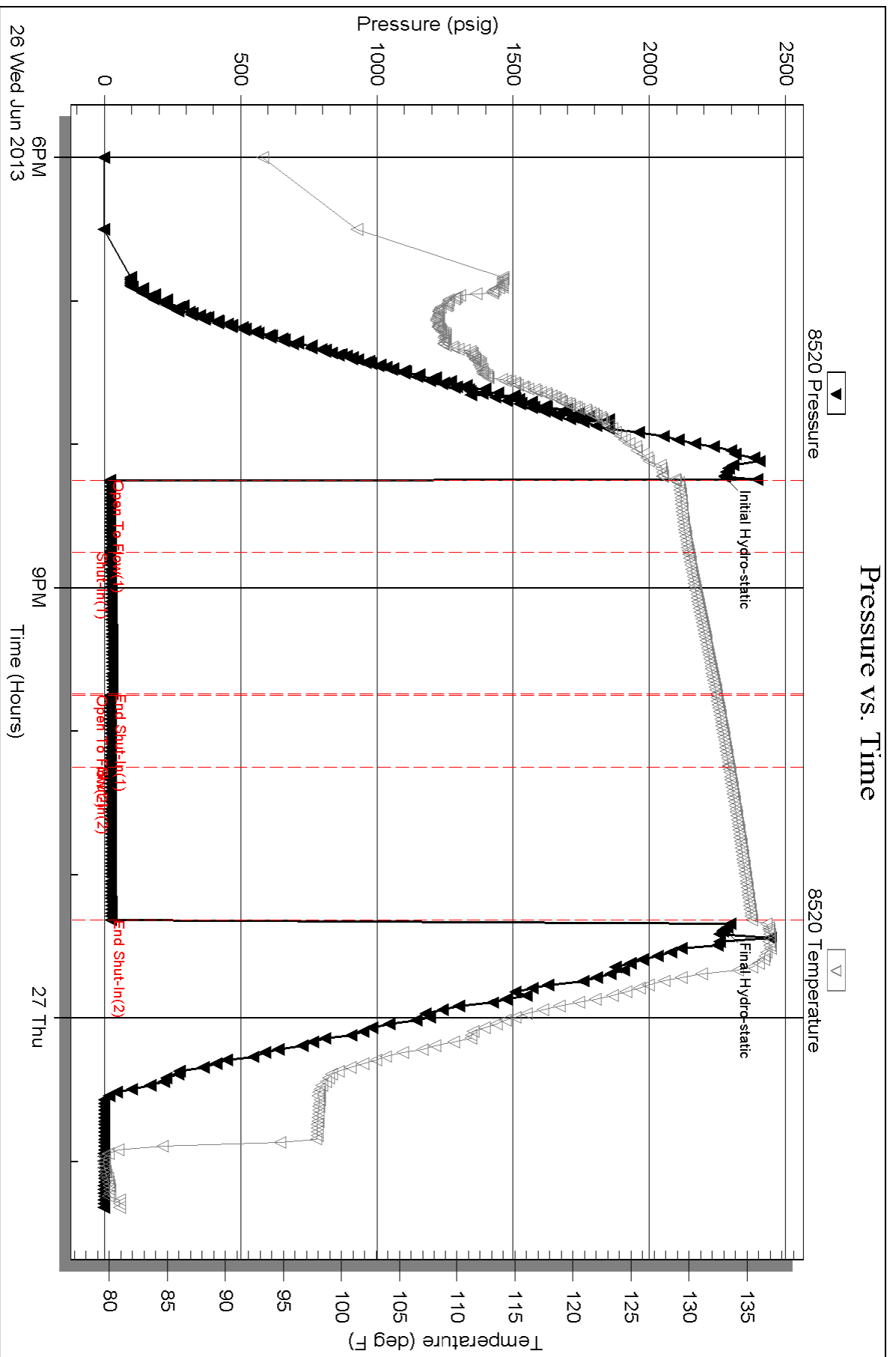
Recovery Comments:

Serial #: 8520

Outside Murfin Drilling Co

Oilwell 'A' #1-27

DST Test Number: 5



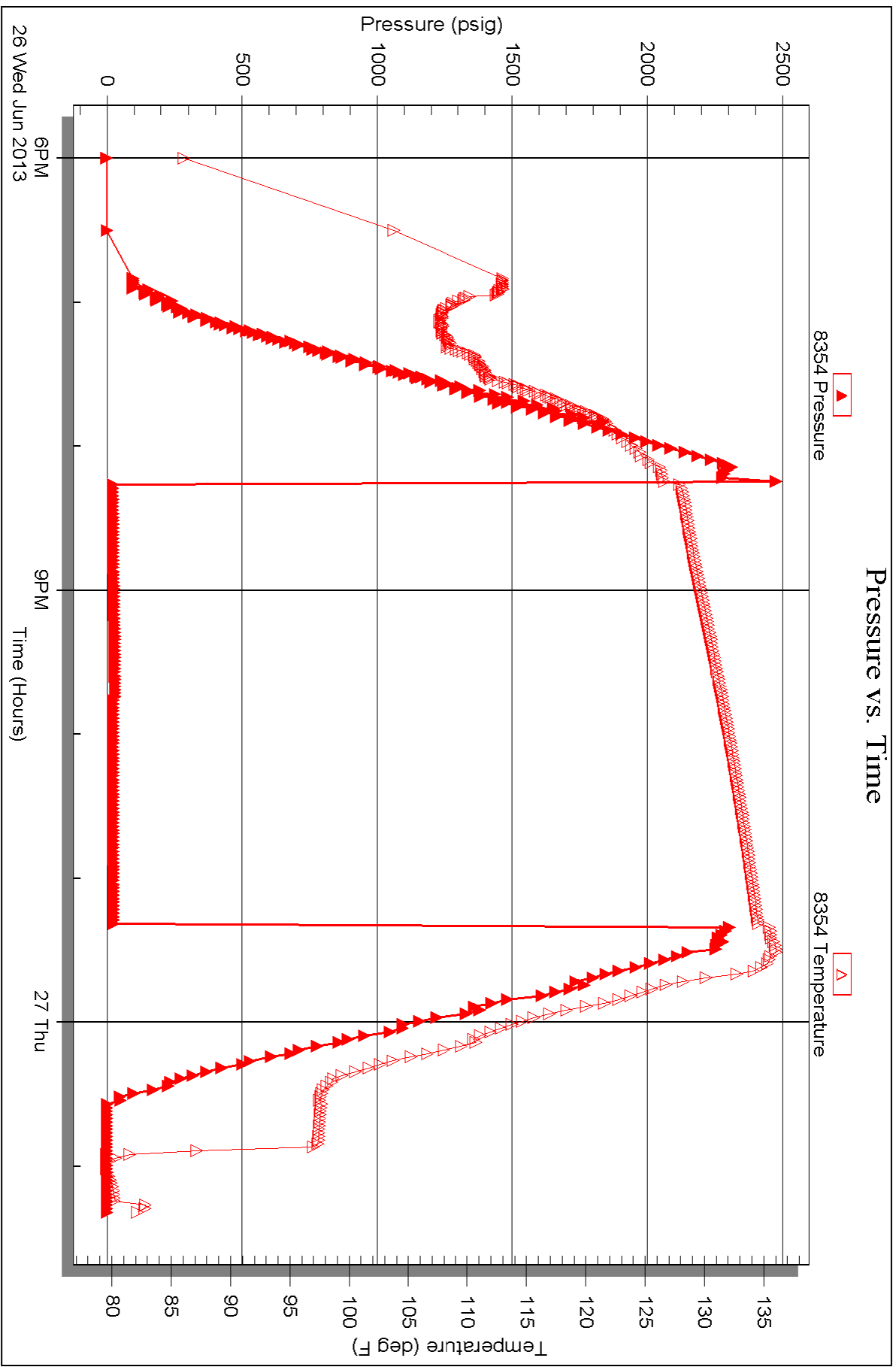
Serial #: 8354

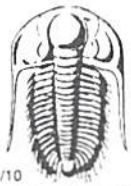
Inside

Murfin Drilling Co

Oilwell 'A' #1-27

DST Test Number: 5





TRILOBITE TESTING INC.

1515 Commerce Parkway • Hays, Kansas 67601

Test Ticket

NO. 52649

Well Name & No. Culwell 'A' #1-27 Test No. 1 Date 6-22-13
 Company Murfin Drilling, Co. Elevation 3384 KB 3294 GL
 Address 250 N Water STE # 308 Wichita, KS 67202
 Co. Rep / Geo. Wes Hansen Rig Murfin #14
 Location: Sec. 27 Twp. 1S Rge. 37W Co. Cheyenne State KS

Interval Tested 4132 - 4189 Zone Tested Uread
 Anchor Length 57' Drill Pipe Run 3589 Mud Wt. 8.8
 Top Packer Depth 4128 Drill Collars Run 533 Vis 65
 Bottom Packer Depth 4132 Wt. Pipe Run Ø WL 6.0
 Total Depth 4189 Chlorides 5000 ppm System LCM 16#

Blow Description IF- 1/4" Blow built to 2"
ISI- NO Return
FF- Surface Blow started at 1 min. 1"
FSL- NO Return

Rec	Feet of	%gas	%oil	%water	%mud
<u>90</u>	<u>OSM</u>	<u>SPOTS</u>		<u>100</u>	
Rec	Feet of	%gas	%oil	%water	%mud
Rec	Feet of	%gas	%oil	%water	%mud
Rec	Feet of	%gas	%oil	%water	%mud

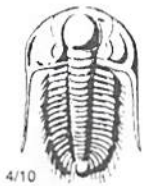
Rec Total 90 BHT 129 Gravity - API RW - @ - °F Chlorides - ppm

(A) Initial Hydrostatic <u>2012</u>	<input checked="" type="checkbox"/> Test 1250	T-On Location <u>9:00 PM</u>
(B) First Initial Flow <u>16</u>	<input checked="" type="checkbox"/> Jars 250	T-Started <u>12:00 AM</u>
(C) First Final Flow <u>37</u>	<input checked="" type="checkbox"/> Safety Joint 75	T-Open <u>3:00 AM</u>
(D) Initial Shut-In <u>1236</u>	<input checked="" type="checkbox"/> Circ Sub <u>N/C</u>	T-Pulled <u>6:00 AM</u>
(E) Second Initial Flow <u>42</u>	<input type="checkbox"/> Hourly Standby	T-Out <u>8:15 AM</u>
(F) Second Final Flow <u>62</u>	<input checked="" type="checkbox"/> Mileage <u>150 RT</u> 232.50	Comments _____
(G) Final Shut-In <u>1216</u>	<input type="checkbox"/> Sampler	<input type="checkbox"/> Ruined Shale Packer
(H) Final Hydrostatic <u>1934</u>	<input type="checkbox"/> Straddle	<input type="checkbox"/> Ruined Packer

Initial Open 30 Extra Packer _____
 Initial Shut-In 60 Extra Recorder _____
 Final Flow 30 Day Standby _____
 Final Shut-In 60 Accessibility _____
 Sub Total 1807.50

Approved By _____ Our Representative [Signature]

TriLOBITE TESTING INC. shall not be liable for damaged of any kind of the property or personnel of the one for whom a test is made, or for any loss suffered or sustained, directly or indirectly, through the use of its equipment, or its statements or opinion concerning the results of any test, tools lost or damaged in the hole shall be paid for at cost by the party for whom the test is made.



TRILOBITE TESTING INC.

1515 Commerce Parkway • Hays, Kansas 67601

Test Ticket

NO. 52650

Well Name & No. Culwell 'A' # 1-27 Test No. 2 Date 6-23-13
 Company Murfin Drilling, Co. Elevation 3384 KB 3294 GL
 Address 250 N Water STE #3000 Wichita, KS 67202
 Co. Rep / Geo. Wes Hansen Rig Murfin #14
 Location: Sec. 27 Twp. 15 Rge. 37W Co. Cheyenne State KS

Interval Tested 4264-4338 Zone Tested LKC "D"
 Anchor Length 66' Drill Pipe Run 3718 Mud Wt. 8.9
 Top Packer Depth 4268 Drill Collars Run 533 Vis 59
 Bottom Packer Depth 4264 Wt. Pipe Run Ø WL 6.8
 Total Depth 4338 Chlorides 6000 ppm System LCM 12#

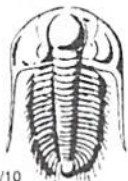
Blow Description IF - Blow built to 4"
ISI - Surface Return started at 20 min. Built to 3/4"
FF - Blow built to 5"
FSI - No Return

Rec	Feet of	%gas	%oil	%water	%mud
<u>1000</u>	<u>OSM</u>	<u>SPOTS</u>		<u>100</u>	
<u>1800</u>	<u>OSMW</u>	<u>SPOTS</u>	<u>50</u>	<u>50</u>	
Rec	Feet of	%gas	%oil	%water	%mud
Rec	Feet of	%gas	%oil	%water	%mud
Rec	Feet of	%gas	%oil	%water	%mud

Rec Total 2800 BHT 136 Gravity - API RW .25 @ 71 °F Chlorides 28,000 ppm
 (A) Initial Hydrostatic 2105 Test 1250 T-On Location 9:15 PM
 (B) First Initial Flow 19 Jars 250 T-Started 9:50 PM
 (C) First Final Flow 72 Safety Joint 75 T-Open 12:30 AM
 (D) Initial Shut-In 1284 Circ Sub T-Pulled 4:30 AM
 (E) Second Initial Flow 81 Hourly Standby T-Out 6:50 AM
 (F) Second Final Flow 171 Mileage 150RT 232.50 Comments
 (G) Final Shut-In 1281 Sampler Ruined Shale Packer
 (H) Final Hydrostatic 2009 Straddle Ruined Packer
 Initial Open 30 Shale Packer Extra Copies
 Initial Shut-In 60 Extra Packer Sub Total 0
 Final Flow 60 Extra Recorder Total 1807.50
 Final Shut-In 90 Day Standby MP/DST Disc't
 Sub Total 1807.50 Accessibility

Approved By _____ Our Representative 

Trilobite Testing Inc. shall not be liable for damaged of any kind of the property or personnel of the one for whom a test is made, or for any loss suffered or sustained, directly or indirectly, through the use of its equipment, or its statements or opinion concerning the results of any test, tools lost or damaged in the hole shall be paid for at cost by the party for whom the test is made.



TRILOBITE TESTING INC.

1515 Commerce Parkway • Hays, Kansas 67601

Test Ticket

NO. 52129

Well Name & No. Curlwell 'A' #1-27 Test No. 3 Date 6-24-13
 Company Murfin Drilling, Co. Elevation 3304 KB 3294 GL
 Address 250 N Water STE #3000 Wichita, KS 67202
 Co. Rep / Geo. Wes Hansen Rig Murfin #14
 Location: Sec. 27 Twp. 1S Rge. 37W Co. Cheyenne State KS

Interval Tested 4330-4430 Zone Tested LKC "G-I"
 Anchor Length 100 Drill Pipe Run 3809 Mud Wt. 9.1
 Top Packer Depth 4326 Drill Collars Run 533 Vis 69
 Bottom Packer Depth 4330 Wt. Pipe Run 0 WL 6.8
 Total Depth 4430 Chlorides 6000 ppm System LCM 12#

Blow Description IF - 1/4" Blow built to 3/4"
ISI - NO Return
FF - NO Blow
FST - NO Return

Rec	Feet of	%gas	%oil	%water	%mud
<u>10</u>	<u>Mud</u>			<u>100</u>	
Rec	Feet of	%gas	%oil	%water	%mud
Rec	Feet of	%gas	%oil	%water	%mud
Rec	Feet of	%gas	%oil	%water	%mud

Rec Total 10 BHT 132 Gravity - API RW - @ - ° F Chlorides - ppm

(A) Initial Hydrostatic	<u>2088</u>	<input checked="" type="checkbox"/> Test	<u>1250</u>	T-On Location	<u>7:15 PM</u>
(B) First Initial Flow	<u>20</u>	<input checked="" type="checkbox"/> Jars	<u>250</u>	T-Started	<u>8:05 PM</u>
(C) First Final Flow	<u>27</u>	<input checked="" type="checkbox"/> Safety Joint	<u>75</u>	T-Open	<u>10:45 PM</u>
(D) Initial Shut-In	<u>1194</u>	<input checked="" type="checkbox"/> Circ Sub	<u>NIL</u>	T-Pulled	<u>11:45 AM</u>
(E) Second Initial Flow	<u>30</u>	<input type="checkbox"/> Hourly Standby		T-Out	<u>3:45 AM</u>
(F) Second Final Flow	<u>35</u>	<input checked="" type="checkbox"/> Mileage	<u>150 RT</u> 232.50	Comments	
(G) Final Shut-In	<u>1085</u>	<input type="checkbox"/> Sampler			
(H) Final Hydrostatic	<u>2083</u>	<input type="checkbox"/> Straddle		<input type="checkbox"/> Ruined Shale Packer	

Initial Open	<u>30</u>	<input type="checkbox"/> Shale Packer		<input type="checkbox"/> Ruined Packer	
Initial Shut-In	<u>60</u>	<input type="checkbox"/> Extra Packer		<input type="checkbox"/> Extra Copies	
Final Flow	<u>30</u>	<input type="checkbox"/> Extra Recorder		Sub Total	<u>0</u>
Final Shut-In	<u>60</u>	<input type="checkbox"/> Day Standby		Total	<u>1807.50</u>
		<input type="checkbox"/> Accessibility		MP/DST Disc't	
		Sub Total	<u>1807.50</u>		

Approved By _____ Our Representative [Signature]

Trilobite Testing Inc. shall not be liable for damaged of any kind of the property or personnel of the one for whom a test is made, or for any loss suffered or sustained, directly or indirectly, through the use of its equipment, or its statements or opinion concerning the results of any test, tools lost or damaged in the hole shall be paid for at cost by the party for whom the test is made.



TRILOBITE TESTING INC.

1515 Commerce Parkway • Hays, Kansas 67601

Test Ticket

NO. 52130

Well Name & No. Cul Well 'A' #1-27 Test No. 4 Date 6-25-13
 Company Murrin Drilling, CO Elevation 3304 KB 3294 GL
 Address 250 N Water STE #300 Wichita, KS 67202
 Co. Rep / Geo. Wes Hansen Rig Murrin #14
 Location: Sec. 27 Twp. 1S Rge. 37W Co. Cheyenne State KS

Interval Tested 4424-4474 Zone Tested LKC "J"
 Anchor Length 50' Drill Pipe Run 3868 Mud Wt. 9.1
 Top Packer Depth 4420 Drill Collars Run 533' Vis 65
 Bottom Packer Depth 4424 Wt. Pipe Run 0 WL 6.0
 Total Depth 4474 Chlorides 1,000 ppm System LCM 9#

Blow Description IF- 1/4" Blow Died in 25 min.
ISI- NO Return
FF- NO Blow
FSI- NO Return

Rec	Feet of	%gas	%oil	%water	%mud
<u>20</u>	<u>Mud</u>			<u>100</u>	
Rec	Feet of	%gas	%oil	%water	%mud
Rec	Feet of	%gas	%oil	%water	%mud
Rec	Feet of	%gas	%oil	%water	%mud

Rec Total 20 BHT 131 Gravity — API RW — @ — °F Chlorides — ppm

(A) Initial Hydrostatic <u>2122</u>	<input checked="" type="checkbox"/> Test <u>1250</u>	T-On Location <u>10:40 AM</u>
(B) First Initial Flow <u>34</u>	<input checked="" type="checkbox"/> Jars <u>250</u>	T-Started <u>11:10 AM</u>
(C) First Final Flow <u>35</u>	<input checked="" type="checkbox"/> Safety Joint <u>75</u>	T-Open <u>1:50 PM</u>
(D) Initial Shut-In <u>316</u>	<input checked="" type="checkbox"/> Circ Sub <u>NIC</u>	T-Pulled <u>4:50 PM</u>
(E) Second Initial Flow <u>35</u>	<input type="checkbox"/> Hourly Standby	T-Out <u>6:50 PM</u>
(F) Second Final Flow <u>36</u>	<input checked="" type="checkbox"/> Mileage <u>150 RT</u> 232.50	Comments <u>Tool opened early and stuck approx 5' to bottom.</u>
(G) Final Shut-In <u>149</u>	<input type="checkbox"/> Sampler	<input type="checkbox"/> Ruined Shale Packer
(H) Final Hydrostatic <u>2105</u>	<input type="checkbox"/> Straddle	<input type="checkbox"/> Ruined Packer
Initial Open <u>30</u>	<input type="checkbox"/> Shale Packer	<input type="checkbox"/> Extra Copies
Initial Shut-In <u>60</u>	<input type="checkbox"/> Extra Packer	Sub Total <u>0</u>
Final Flow <u>30</u>	<input type="checkbox"/> Extra Recorder	Total <u>1807.50</u>
Final Shut-In <u>60</u>	<input type="checkbox"/> Day Standby	MP/DST Disc't
	<input type="checkbox"/> Accessibility	
	Sub Total <u>1807.50</u>	

Approved By _____ Our Representative [Signature]

Trilobite Testing Inc. shall not be liable for damaged of any kind of the property or personnel of the one for whom a test is made, or for any loss suffered or sustained, directly or indirectly, through the use of its equipment, or its statements or opinion concerning the results of any test, tools lost or damaged in the hole shall be paid for at cost by the party for whom the test is made.



TRILOBITE TESTING INC.

1515 Commerce Parkway • Hays, Kansas 67601

Test Ticket

NO. 52131

Well Name & No. Culwell 'A' #1-27 Test No. 5 Date 6-26-13
 Company Murfin Drilling, Co. Elevation 3304 KB 3294 GL
 Address 2508 N Water STE #3000 Wichita, KS 67202
 Co. Rep / Geo. Wes Hansen Rig Murfin #14
 Location: Sec. 27 Twp. 1S Rge. 37W Co. Cheyenne State KS

Interval Tested 4625-4670 Zone Tested Pawnee
 Anchor Length 45' Drill Pipe Run 4089 Mud Wt. 9.1
 Top Packer Depth 4621 Drill Collars Run 533' Vis 69
 Bottom Packer Depth 4625 Wt. Pipe Run Ø WL 6.8
 Total Depth 4670 Chlorides 1,000 ppm System LCM 8#

Blow Description IF - 1/4" Blow died back to 1/8"
ISI - NO Return
FF - NO Blow
FSI - NO Return

Rec	Feet of	%gas	%oil	%water	%mud
<u>5</u>	<u>Mud</u>			<u>100</u>	
Rec	Feet of	%gas	%oil	%water	%mud
Rec	Feet of	%gas	%oil	%water	%mud
Rec	Feet of	%gas	%oil	%water	%mud

Rec Total 5 BHT 135° Gravity - API RW - @ - ° F Chlorides - ppm

(A) Initial Hydrostatic <u>2274</u>	<input checked="" type="checkbox"/> Test <u>1250</u>	T-On Location <u>4:20 PM</u>
(B) First Initial Flow <u>20</u>	<input checked="" type="checkbox"/> Jars <u>250</u>	T-Started <u>5:50 PM</u>
(C) First Final Flow <u>21</u>	<input checked="" type="checkbox"/> Safety Joint <u>75</u>	T-Open <u>8:15 PM</u>
(D) Initial Shut-In <u>29</u>	<input checked="" type="checkbox"/> Circ Sub <u>NIC</u>	T-Pulled <u>11:15 PM</u>
(E) Second Initial Flow <u>21</u>	<input type="checkbox"/> Hourly Standby	T-Out <u>1:25 AM</u>
(F) Second Final Flow <u>22</u>	<input checked="" type="checkbox"/> Mileage <u>150 RT</u> 232.50	Comments
(G) Final Shut-In <u>24</u>	<input type="checkbox"/> Sampler	
(H) Final Hydrostatic <u>2273</u>	<input type="checkbox"/> Straddle	<input type="checkbox"/> Ruined Shale Packer
Initial Open <u>30</u>	<input type="checkbox"/> Shale Packer	<input type="checkbox"/> Ruined Packer
Initial Shut-In <u>60</u>	<input type="checkbox"/> Extra Packer	<input type="checkbox"/> Extra Copies
Final Flow <u>30</u>	<input type="checkbox"/> Extra Recorder	Sub Total <u>0</u>
Final Shut-In <u>60</u>	<input type="checkbox"/> Day Standby	Total <u>1807.50</u>
	<input type="checkbox"/> Accessibility	MP/DST Disc't

Sub Total 1807.50

Approved By _____ Our Representative [Signature]

Trilobite Testing Inc. shall not be liable for damaged of any kind of the property or personnel of the one for whom a test is made, or for any loss suffered or sustained, directly or indirectly, through the use of its equipment, or its statements or opinion concerning the results of any test, tools lost or damaged in the hole shall be paid for at cost by the party for whom the test is made.