

# Timothy G. Pierce

## Petroleum Geologist

### GEOLOGIST'S REPORT DRILLING TIME AND SAMPLE LOG

COMPANY R & B Oil and Gas, Inc.  
 LEASE Baker 'A' #1  
 FIELD Spivey-Grabs  
 LOCATION NE NW SW  
 SEC 5 TWP 31S RGE 8W  
 COUNTY Harper STATE Kansas  
 CONTRACTOR Hardt Drilling Rig #1  
 SPUD 6-10-2013 COMP 6-17-2013  
 RTD 4686 LTD NA  
 MUD UP 2808 TYPE MUD Chemical  
 SAMPLES SAVED FROM 2400 TO RTD  
 DRILLING TIME KEPT FROM 2400 TO RTD  
 SAMPLES EXAMINED FROM 2400 TO RTD  
 GEOLOGICAL SUPERVISION FROM 2085 TO RTD  
 GEOLOGIST ON WELL Tim Pierce

#### ELEVATIONS

KB 1695'  
 DF \_\_\_\_\_  
 GL 1685'  
 Measurements Are All  
 From Kelly Bushing

#### CASING

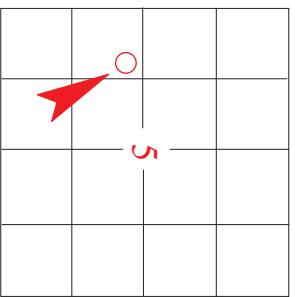
CONDUCTOR \_\_\_\_\_  
 SURFACE 8-5/8" at 263'  
 PRODUCTION 5-1/2" at 4664'

#### ELECTRICAL SURVEYS

None

#### FORMATION TOPS ELECTRIC LOG SAMPLE

<u>Onaga Sh.</u>	<u>2442 (-747)</u>
<u>Topoka LS</u>	<u>3061 (-1366)</u>
<u>Heebner Sh.</u>	<u>3450 (-1755)</u>
<u>Lansing</u>	<u>3653 (-1958)</u>
<u>Stark Sh.</u>	<u>4090 (-2395)</u>
<u>Cherokee Sh.</u>	<u>4329 (-2634)</u>
<u>Mississippi</u>	<u>4414 (-2719)</u>


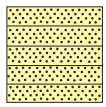
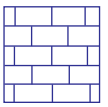
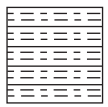

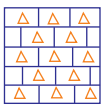

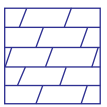


API # 15-077-21,941

REMARKS Samples and drill time indicate a probable productive zone in the Mississippi from 4414' - 4485'  
A slight sample show was observed in the Hertha LS at 4136' - 4142', this zone should be considered before this well is plugged.  
Due to continuing hole problems, no electric logs were run, the decision was made to run casing based on samples and drill time.  
There were no other zones of interest indicated by samples.

Timothy G. Pierce

### LEGEND

							
Anhydrite	Sandstone	Limestone	Shale	Carb Sh	Cherty LS	Chert	Dolomite

DRILLING TIME IN MINUTES PER FOOT  
 Rate of Penetration Decreases  
 →

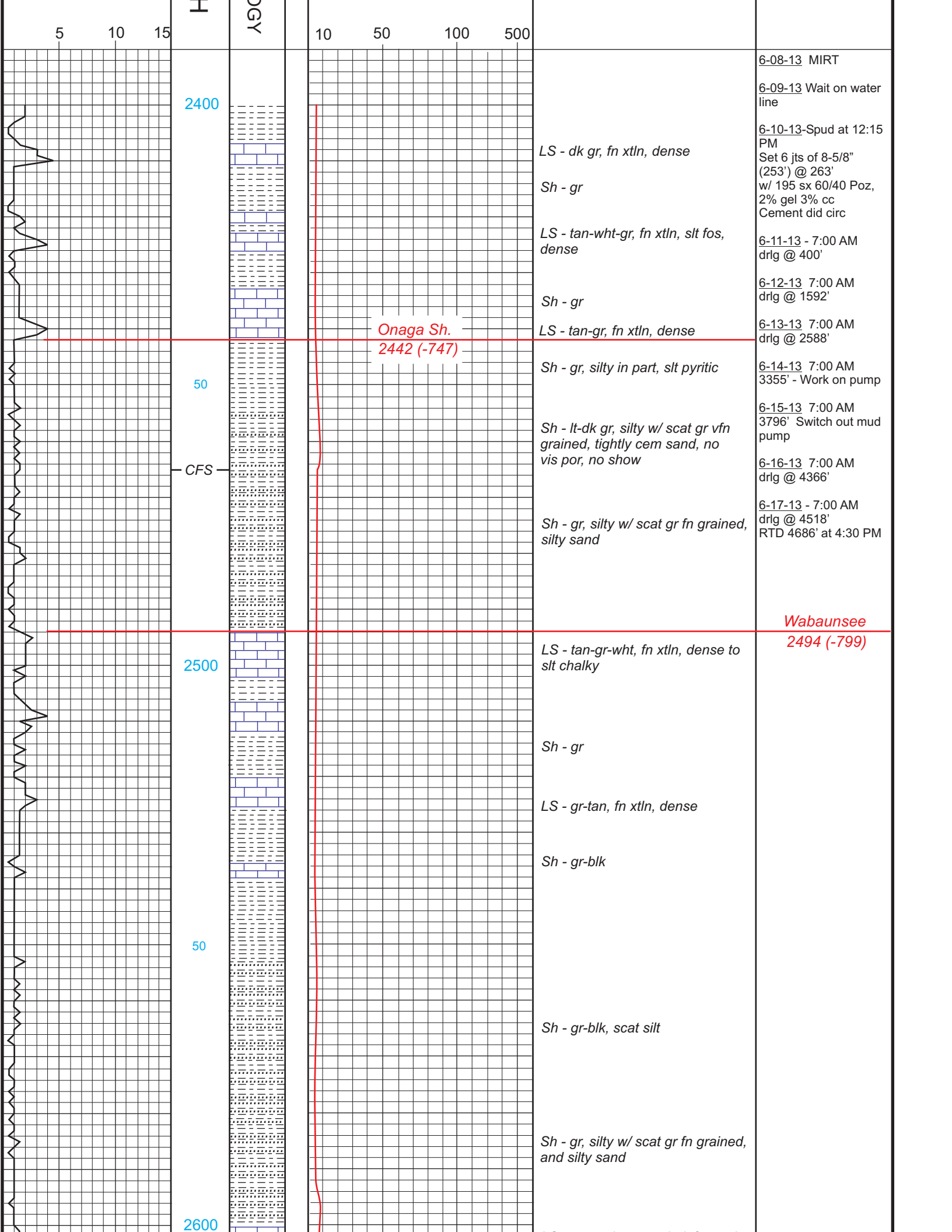
DEPTH

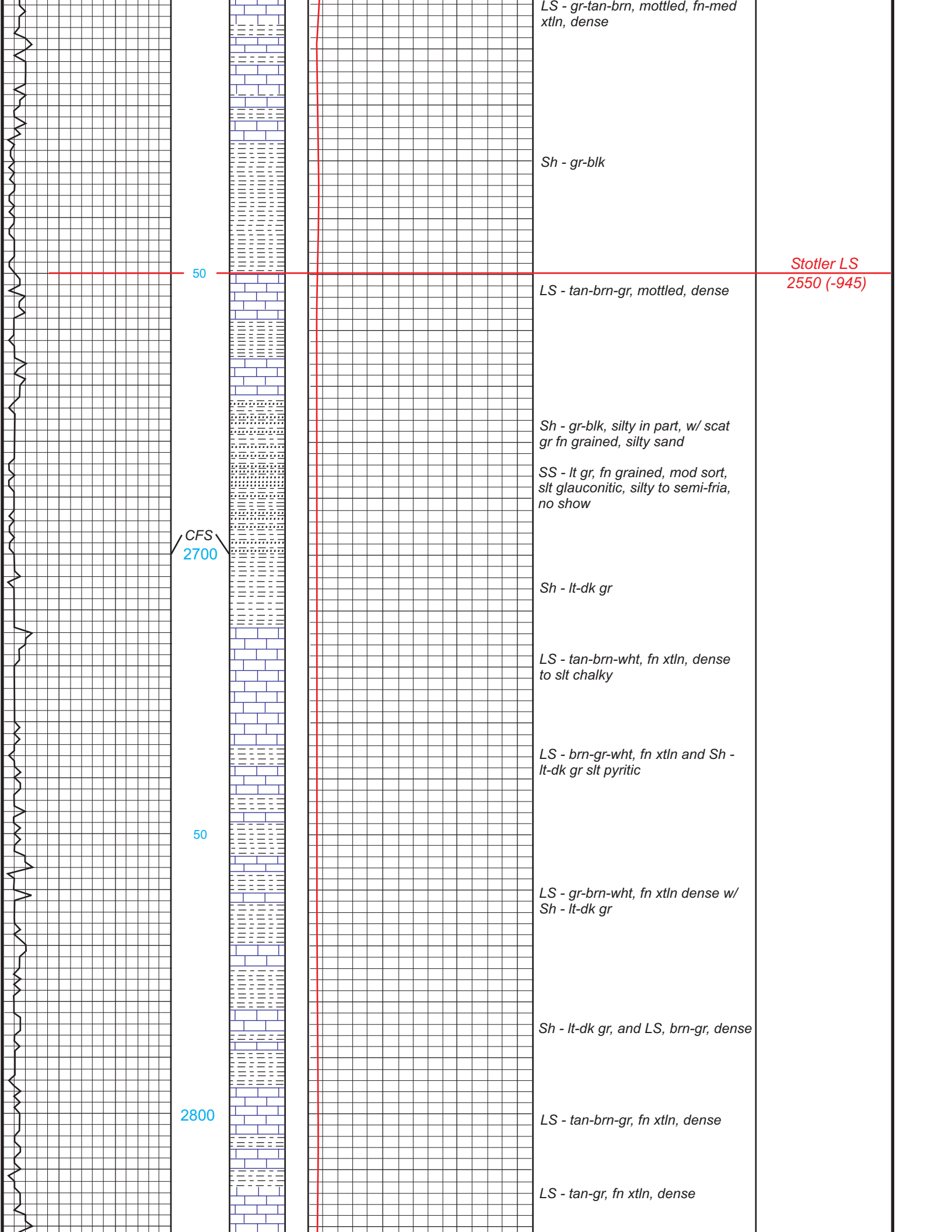
LITHOLOG

GAS SCALE

SAMPLE DESCRIPTION

REMARKS





*LS - gr-tan-brn, mottled, fn-med xtln, dense*

*Sh - gr-blk*

*Stotler LS  
2550 (-945)*

50

*LS - tan-brn-gr, mottled, dense*

*Sh - gr-blk, silty in part, w/ scat gr fn grained, silty sand*

*SS - lt gr, fn grained, mod sort, slt glauconitic, silty to semi-fria, no show*

CFS  
2700

*Sh - lt-dk gr*

*LS - tan-brn-wht, fn xtl, dense to slt chalky*

*LS - brn-gr-wht, fn xtl and Sh - lt-dk gr slt pyritic*

50

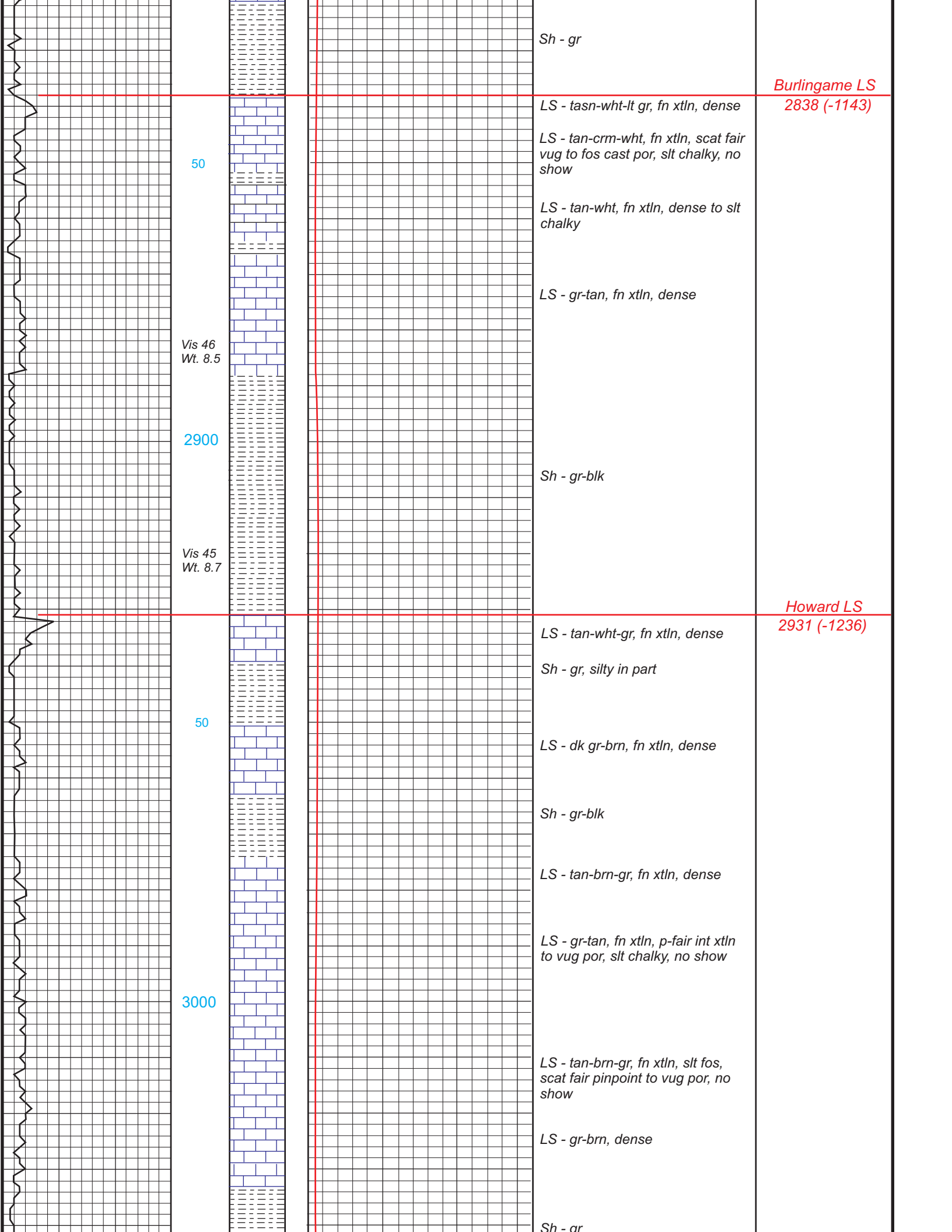
*LS - gr-brn-wht, fn xtl dense w/ Sh - lt-dk gr*

*Sh - lt-dk gr, and LS, brn-gr, dense*

2800

*LS - tan-brn-gr, fn xtl, dense*

*LS - tan-gr, fn xtl, dense*



Sh - gr

*Burlingame LS*  
2838 (-1143)

50

LS - tan-wht-lt gr, fn xtl, dense

LS - tan-crm-wht, fn xtl, scat fair vug to fos cast por, slt chalky, no show

LS - tan-wht, fn xtl, dense to slt chalky

LS - gr-tan, fn xtl, dense

Vis 46  
Wt. 8.5

2900

Sh - gr-blk

Vis 45  
Wt. 8.7

*Howard LS*  
2931 (-1236)

LS - tan-wht-gr, fn xtl, dense

Sh - gr, silty in part

50

LS - dk gr-brn, fn xtl, dense

Sh - gr-blk

LS - tan-brn-gr, fn xtl, dense

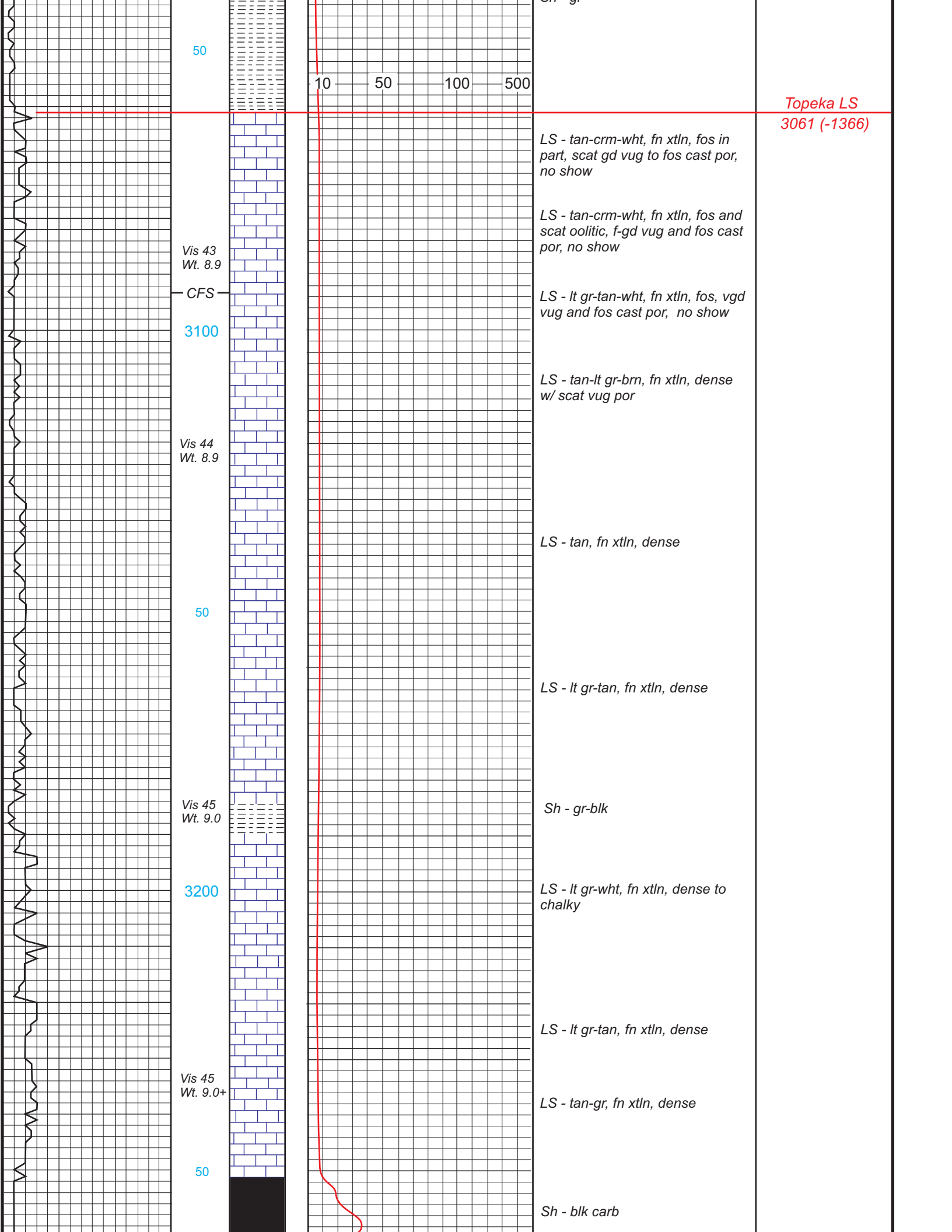
LS - gr-tan, fn xtl, p-fair int xtl to vug por, slt chalky, no show

3000

LS - tan-brn-gr, fn xtl, slt fos, scat fair pinpoint to vug por, no show

LS - gr-brn, dense

Sh - gr



50

10 50 100 500

Topeka LS  
3061 (-1366)

LS - tan-crm-wht, fn xtln, fos in part, scat gd vug to fos cast por, no show

LS - tan-crm-wht, fn xtln, fos and scat oolitic, f-gd vug and fos cast por, no show

Vis 43  
Wt. 8.9

CFS

LS - lt gr-tan-wht, fn xtln, fos, vgd vug and fos cast por, no show

3100

LS - tan-lt gr-brn, fn xtln, dense w/ scat vug por

Vis 44  
Wt. 8.9

LS - tan, fn xtln, dense

50

LS - lt gr-tan, fn xtln, dense

Vis 45  
Wt. 9.0

Sh - gr-blk

3200

LS - lt gr-wht, fn xtln, dense to chalky

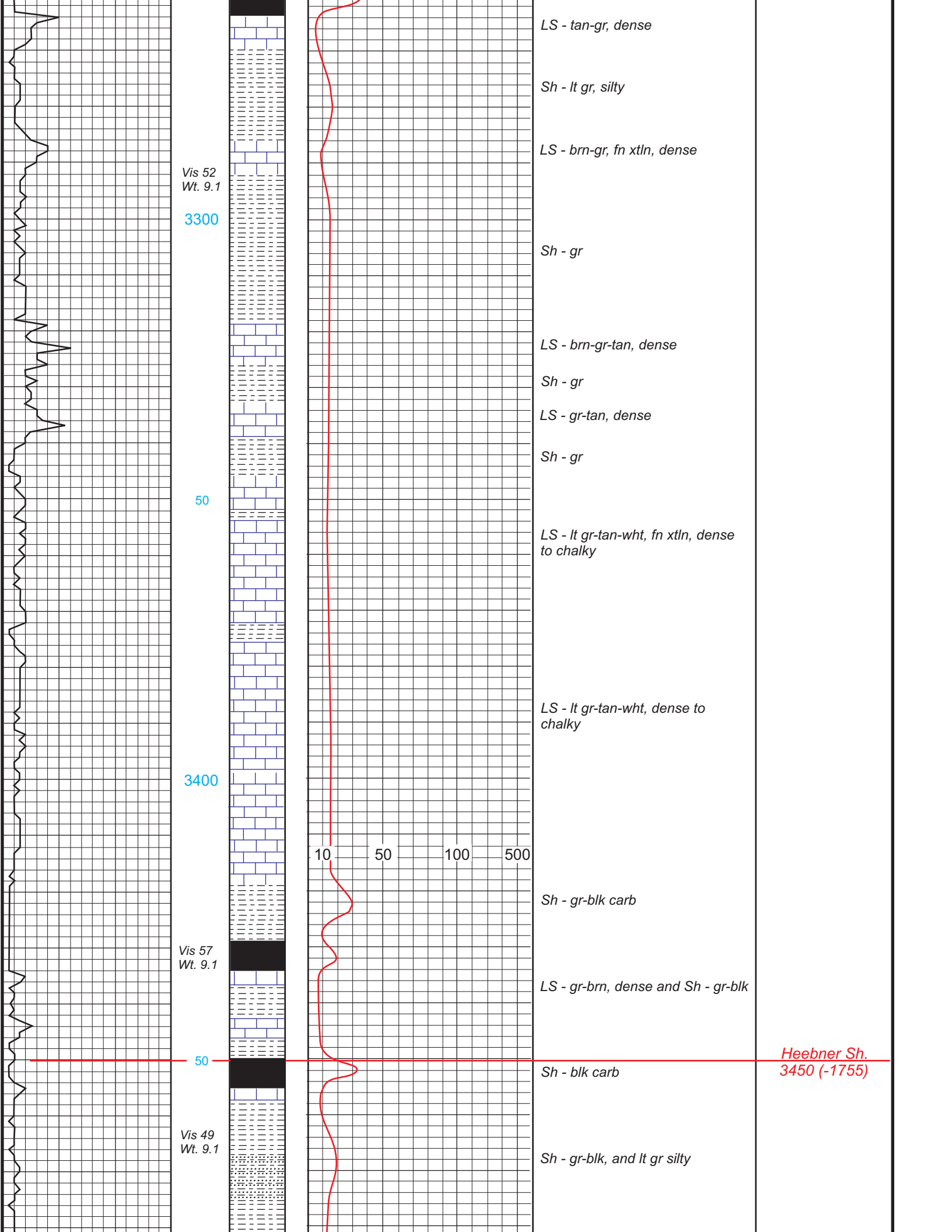
Vis 45  
Wt. 9.0+

LS - lt gr-tan, fn xtln, dense

LS - tan-gr, fn xtln, dense

50

Sh - blk carb



Vis 52  
Wt. 9.1

3300

50

3400

Vis 57  
Wt. 9.1

50

Vis 49  
Wt. 9.1

LS - tan-gr, dense

Sh - lt gr, silty

LS - brn-gr, fn xtln, dense

Sh - gr

LS - brn-gr-tan, dense

Sh - gr

LS - gr-tan, dense

Sh - gr

LS - lt gr-tan-wht, fn xtln, dense to chalky

LS - lt gr-tan-wht, dense to chalky

10 50 100 500

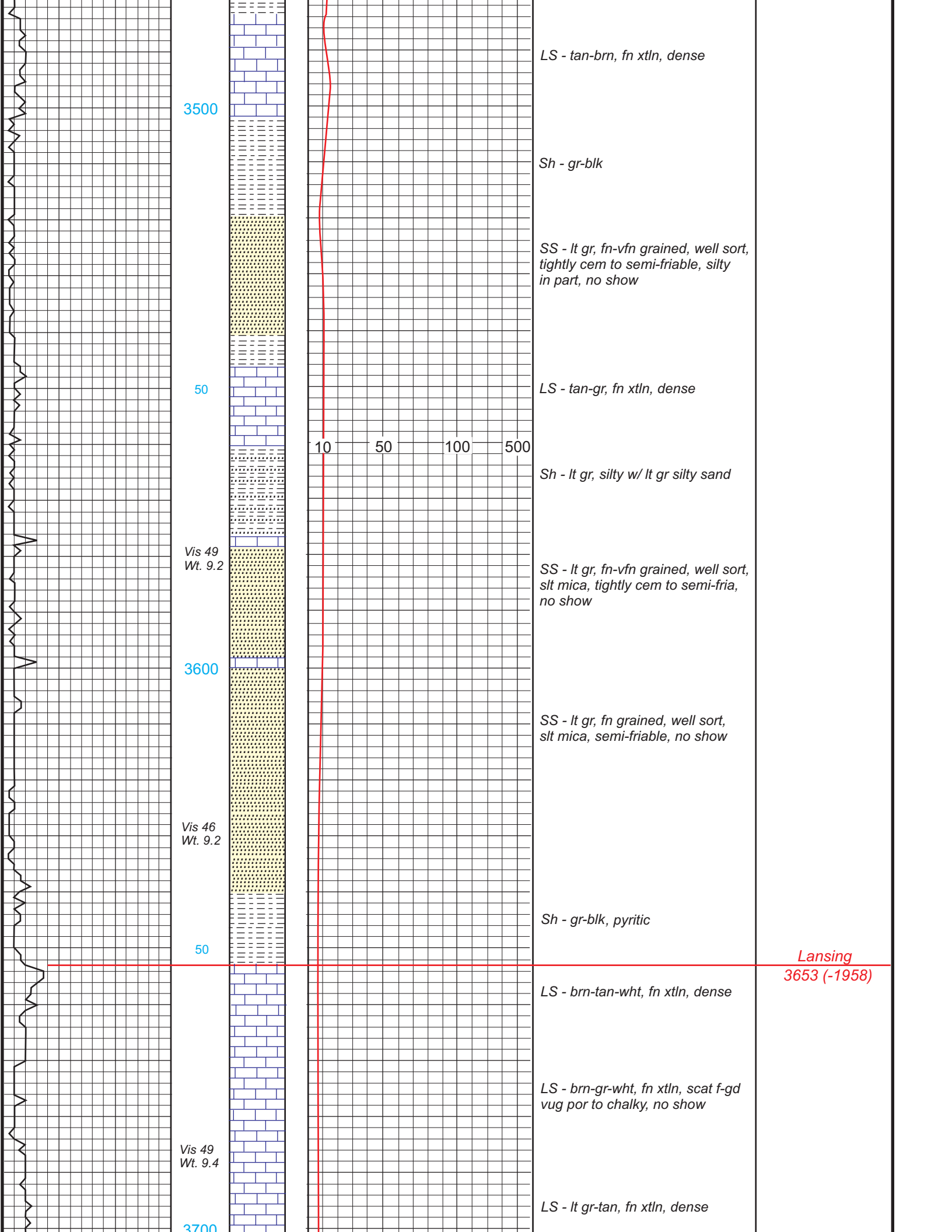
Sh - gr-blk carb

LS - gr-brn, dense and Sh - gr-blk

Sh - blk carb

Heebner Sh.  
3450 (-1755)

Sh - gr-blk, and lt gr silty



3500

LS - tan-brn, fn xtl, dense

Sh - gr-blk

SS - lt gr, fn-vfn grained, well sort, tightly cem to semi-friable, silty in part, no show

50

LS - tan-gr, fn xtl, dense

10 50 100 500

Sh - lt gr, silty w/ lt gr silty sand

Vis 49  
Wt. 9.2

SS - lt gr, fn-vfn grained, well sort, slt mica, tightly cem to semi-fria, no show

3600

SS - lt gr, fn grained, well sort, slt mica, semi-friable, no show

Vis 46  
Wt. 9.2

Sh - gr-blk, pyritic

50

Lansing  
3653 (-1958)

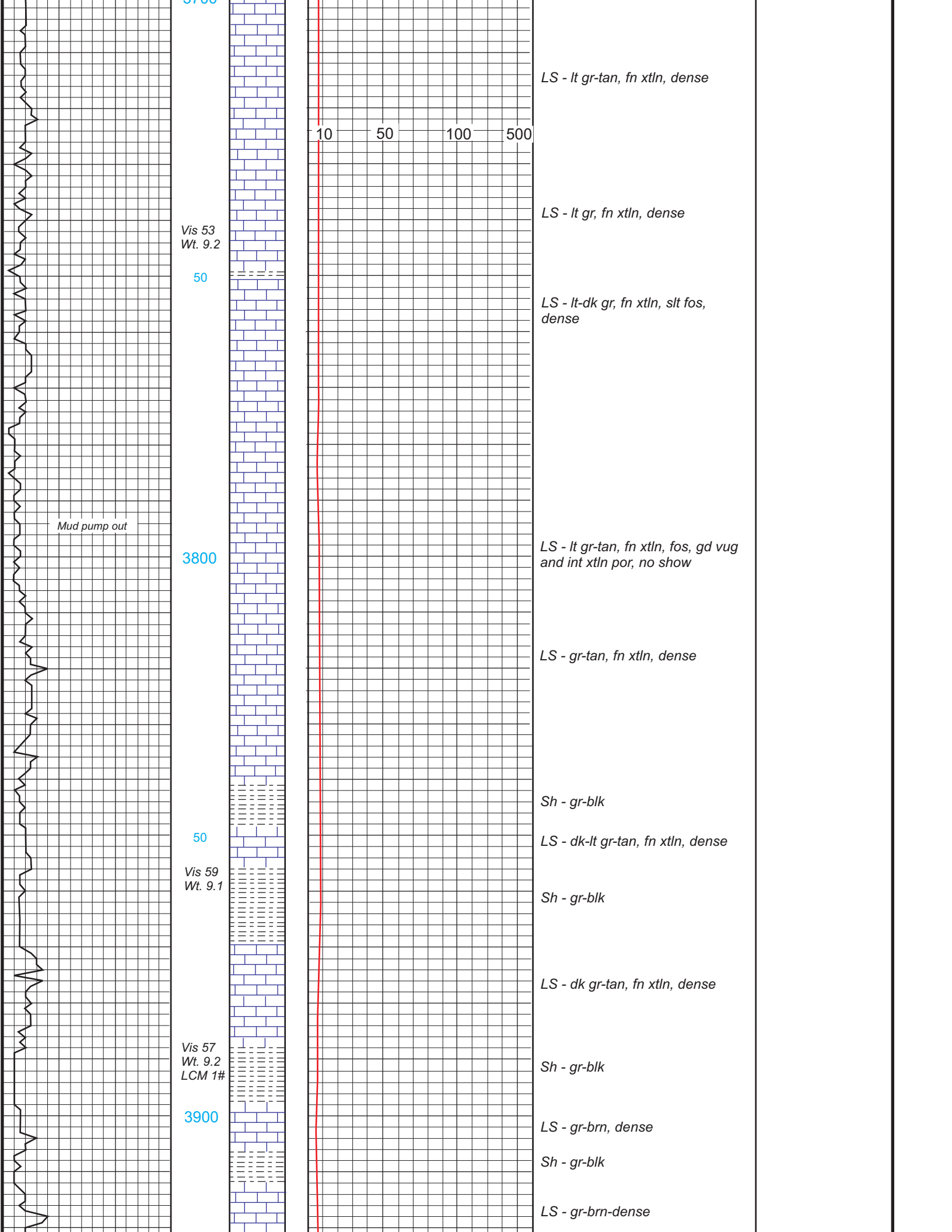
LS - brn-tan-wht, fn xtl, dense

LS - brn-gr-wht, fn xtl, scat f-gd vug por to chalky, no show

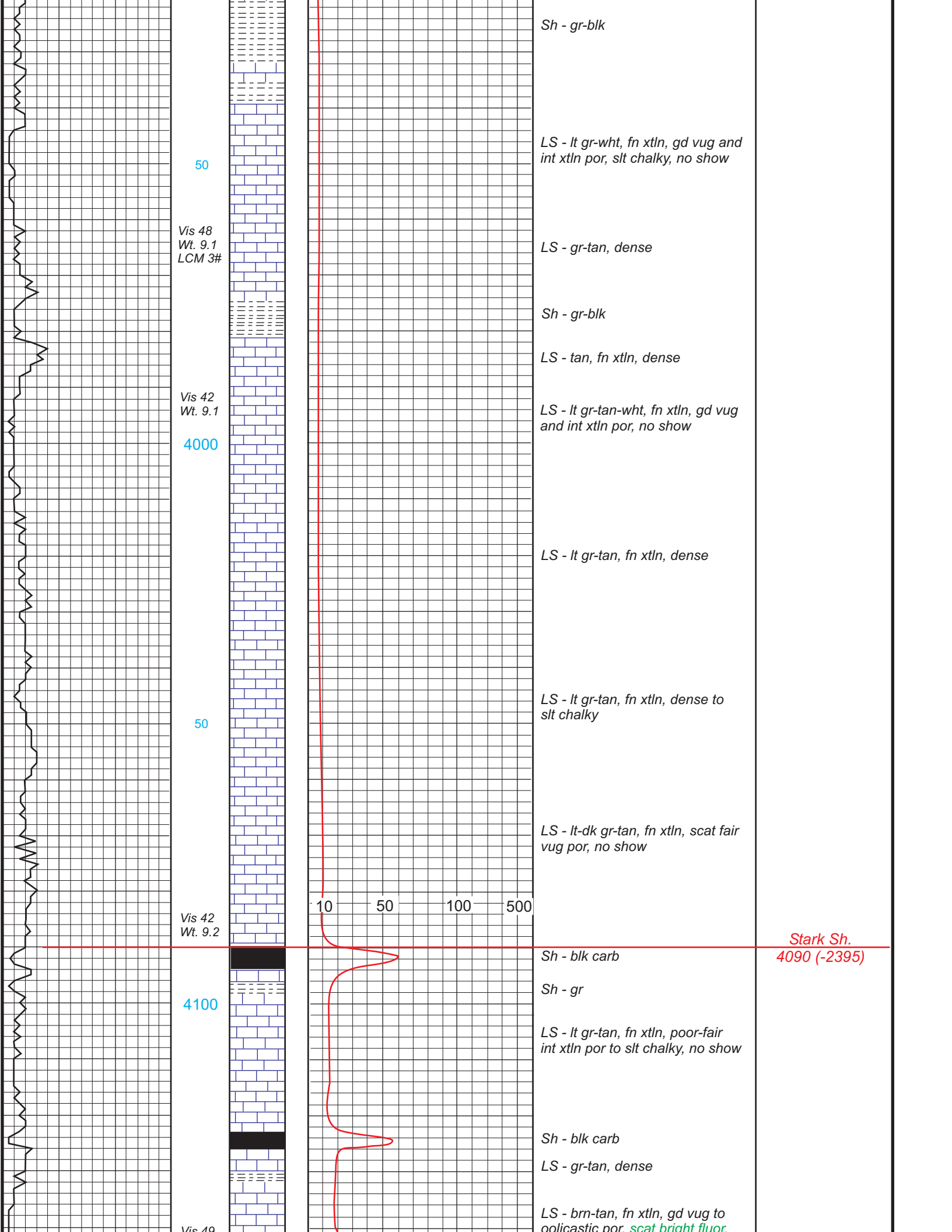
Vis 49  
Wt. 9.4

LS - lt gr-tan, fn xtl, dense

3700







Sh - gr-blk

LS - lt gr-wht, fn xtln, gd vug and int xtln por, slt chalky, no show

50

Vis 48  
Wt. 9.1  
LCM 3#

LS - gr-tan, dense

Sh - gr-blk

LS - tan, fn xtln, dense

Vis 42  
Wt. 9.1

LS - lt gr-tan-wht, fn xtln, gd vug and int xtln por, no show

4000

LS - lt gr-tan, fn xtln, dense

LS - lt gr-tan, fn xtln, dense to slt chalky

50

LS - lt-dk gr-tan, fn xtln, scat fair vug por, no show

10 50 100 500

Vis 42  
Wt. 9.2

Stark Sh.  
4090 (-2395)

Sh - blk carb

4100

Sh - gr

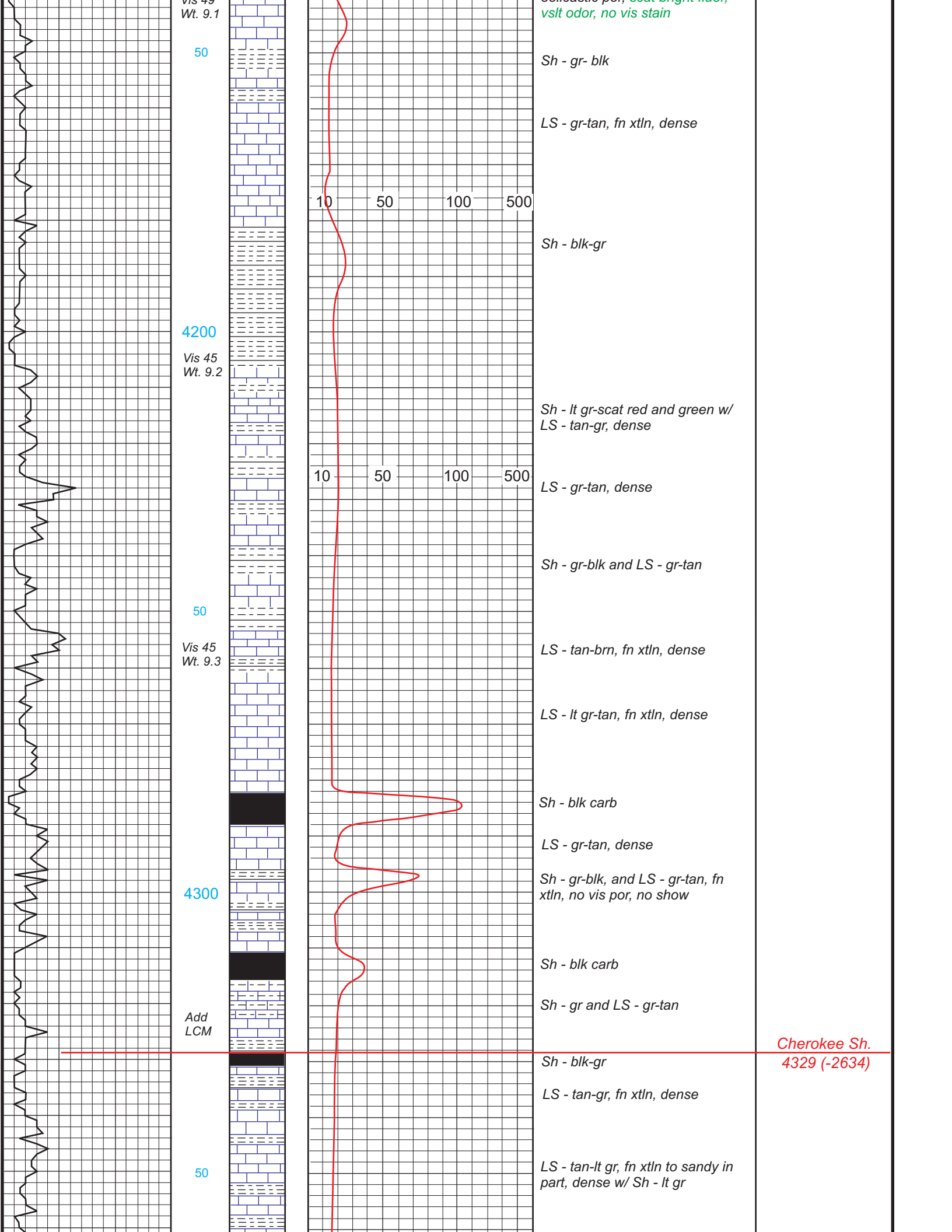
LS - lt gr-tan, fn xtln, poor-fair int xtln por to slt chalky, no show

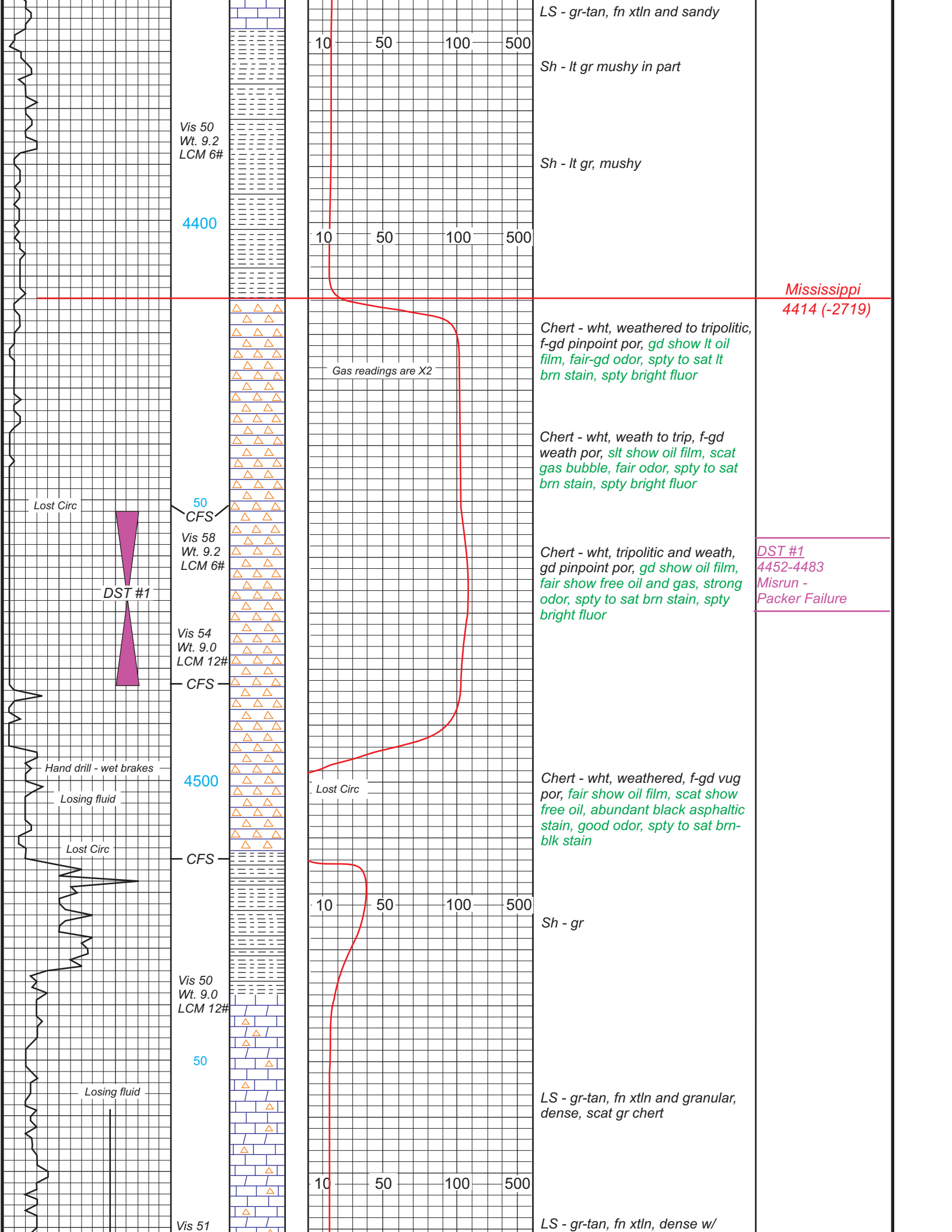
Sh - blk carb

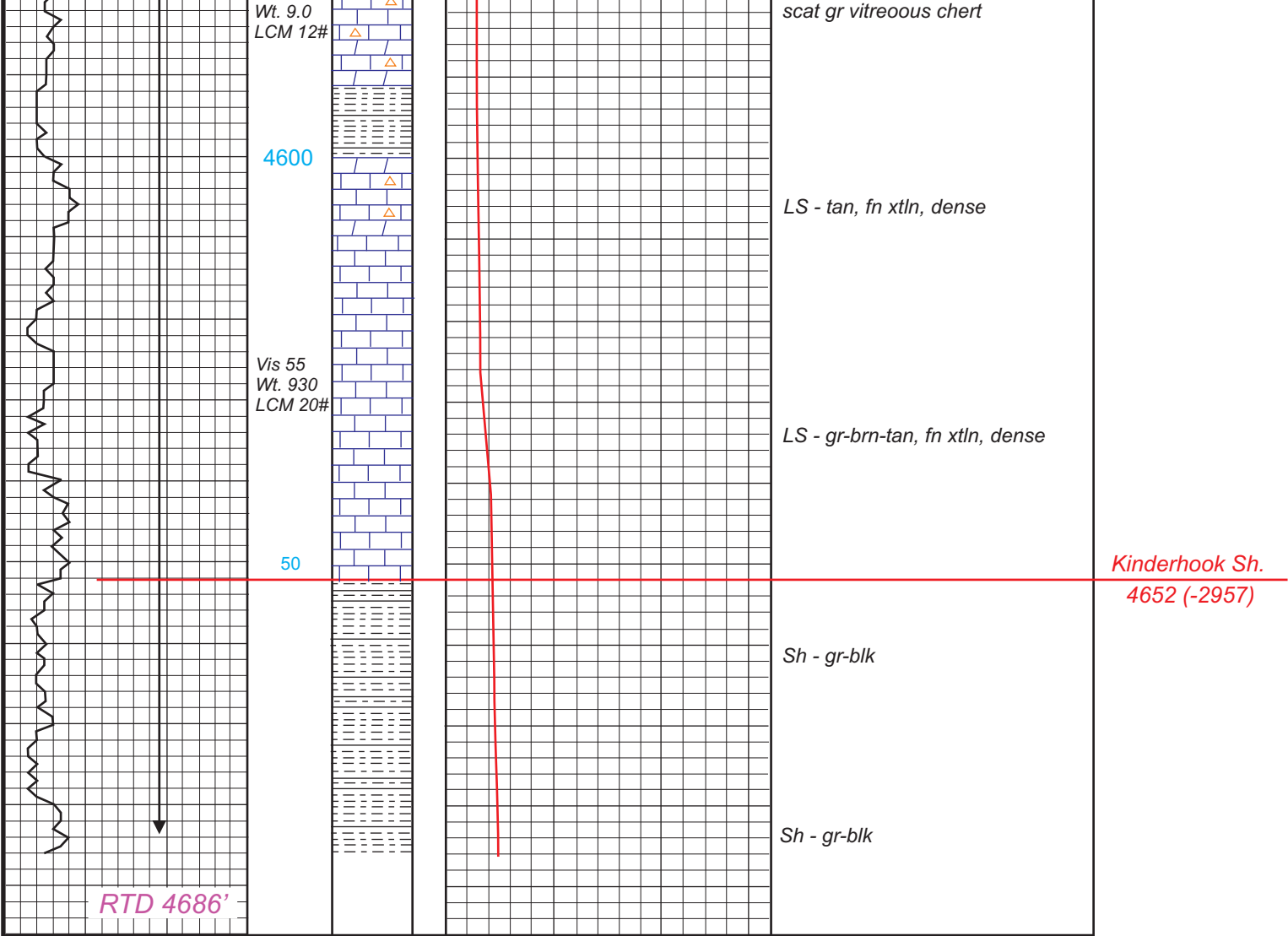
LS - gr-tan, dense

Vis 40

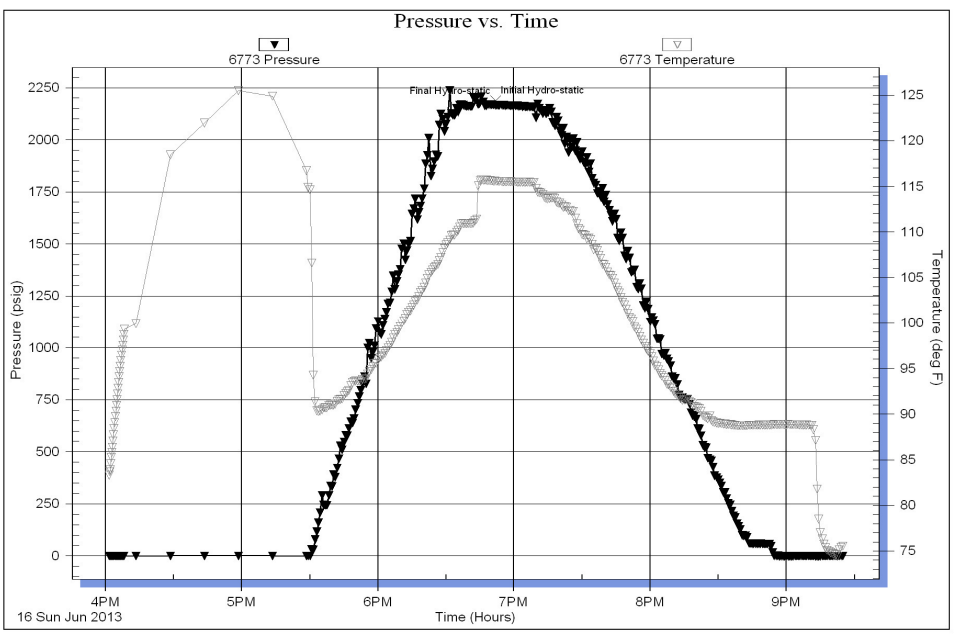
LS - brn-tan, fn xtln, gd vug to polycastic por. scat bright fluor.







Serial #: 6773    Outside    R&B Oil & Gas Inc    Baker A #1    DST Test Number: 1



*DST #1  
4452-4483  
Misrun -  
Packer Failure*

