

JOE GERSTNER OIL LLC

WellSight Systems

Scale 1:240 (5"=100') Imperial
Measured Depth Log

Well Name: Bradshaw 1-21
Location: 21-21S-23W(Hodgeman County)
License Number: 15-083-21896
Spud Date: 8-21-13
Surface Coordinates: 2065' FNL & 1556' FWL NW SW SE NW
Region: KANSAS
Drilling Completed: 8-30-13

Bottom Hole
Coordinates:
Ground Elevation (ft): 2378
Logged Interval (ft): 3600 To: TD
Formation:
Type of Drilling Fluid: Mud-Co Chemical
K.B. Elevation (ft): 2385
Total Depth (ft): 4706

Printed by MUD.LOG from WellSight Systems 1-800-447-1534 www.WellSight.com

OPERATOR

Company: Joe Gerstner Oil, LLC
Address: PO Box 509
Ness City, KS 67560

GEOLOGIST

Name: Andrew Stenzel
Company:
Address: 515 S. Franklin
Ness City, KS 67560

Formation Tops

Sample Tops		LogTops	
Anhy.	1620 (+765)	Anhy.	1626 (+758)
Base Anhy.	1652 (+733)	Base Anhy.	1650 (+734)
Heebner	3905 (-1520)	Heebner	3902 (-1518)
Lansing	3956 (-1571)	Lansing	3955 (-1572)
Stark Sh.	4221 (-1836)	Stark Sh.	4257 (-1873)
BKC	4329 (-1944)	BKC	4322 (-1938)
Marmaton	4341 (-1956)	Marmaton	4337 (-1953)
Ft. Scott	4583 (-2198)	Ft. Scott	4482 (-2098)
Cher. Sh.	4510 (-2125)	Cher. Sh.	4506 (-2123)
Miss.	4583 (-2198)	Miss.	4582 (-2198)
Miss. Por	4587 (-2202)	Miss. Por	4588 (-2204)
RTD	4706 (-2321)	LTD	4708 (-2324)

Drilling Report

DAILY DRILLING REPORT:

8-21-13 MIRU Spud
8-22-13 Drilling @ 1786'
8-23-13 Drilling @ 2662'
8-25-13 Drilling @ 3913'
8-26-13 Drilling @ 4930', DST1
8-27-13 4530'
8-28-13 Drilling @ 4600', DST2
8-29-13 Drilling @ 4606', DST3, DST4
8-30-13 Drilling @ 4706', Logged, Ran 5 1/2" casing

Misc. Info.

RIG: Pickrell Rig 10

MUD: MUDCO

LOGS: Nabors (CND, DIL, & Micro)

Comments

SURFACE Casing: 8 5/8" set at 218'

Production Casing: 113 jts of new 5 1/2, 14# casing 10' off bottom. Port collar at 1595'.

DST 1 4294-4430

30-30-30-30

IF: BOB in 5"

IS: Dead

FF: BOB in 5"

FS: Dead

Rec. 1426' fluid

310' mud

496' wcm

620' sw

Flow Pressures 67-417. 430-648

Shut in Pressures

897-889

Hydrostatic Pressures

2118-2101

DST2 4522-4600

30-30-60-60

IF: 1/4" built to 4"

IS: Dead

FF: 1/4" built to BOB in 39"

FS: Dead

Rec. 278' fluid

124' GIP

30' free oil

62' GCMO (10%g, 30%m, 60%o)

62' OCGM (5%o, 10%g, 85%m)

Flow Pressures 34-51, 54-80

Shut in Pressures

1220-1199

Hydrostatic Pressures
2242-2220

DST#3 4598-4606

30-30-30-30

IF: Weak surface blow, died

IS: Dead

FF: Dead

FS: Dead

Rec.

10' mud w trace of oil spots

Flow Pressures 26-25, 24-25

Shut in Pressures 1235-1088

Hydrostatic 2287-2283

DST#4 4604-4616

30-30-30-30

IF: Built to 1/4"

IS: Dead

FF: Dead

FS: Dead

Rec.

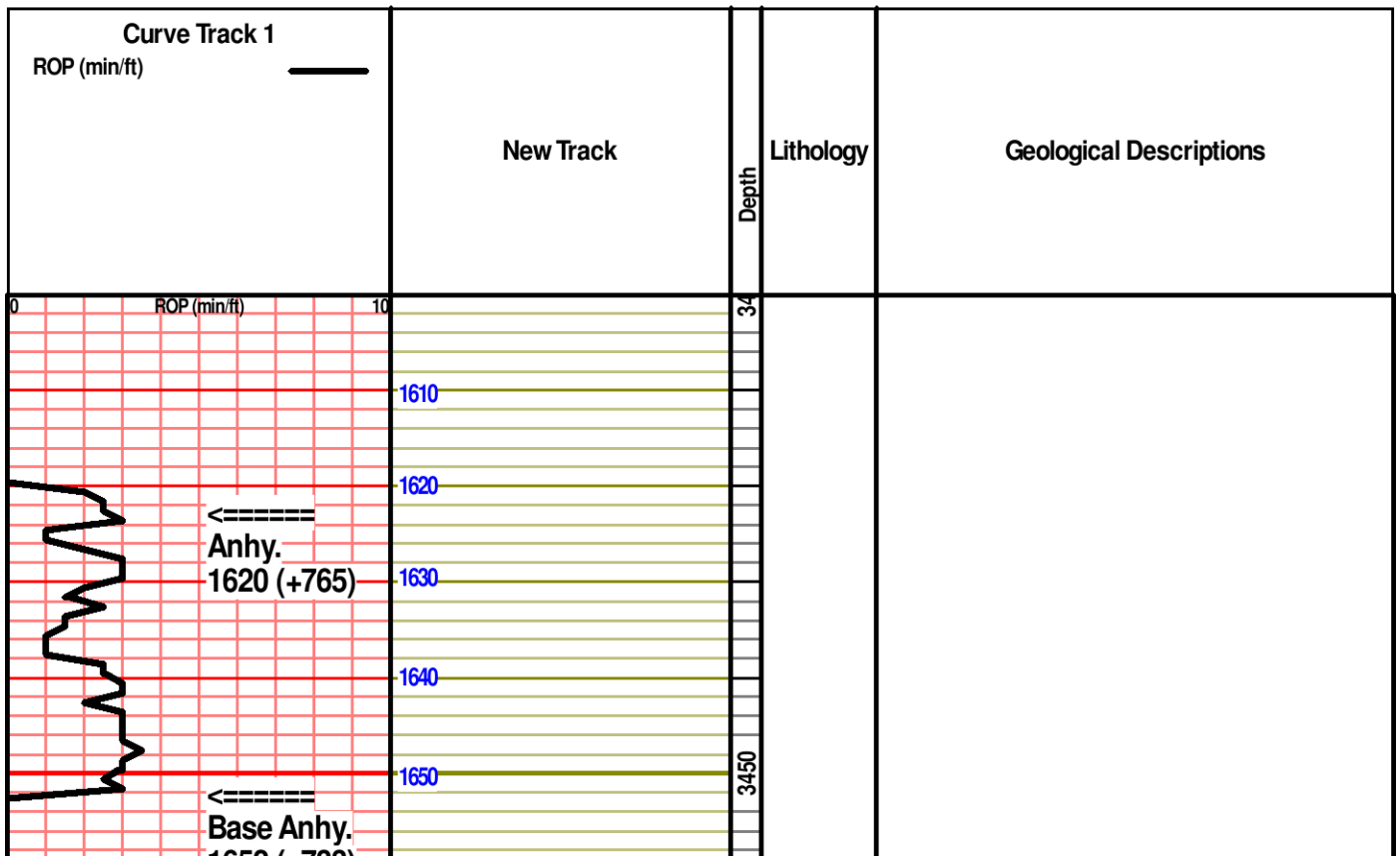
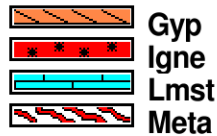
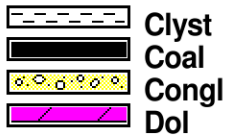
15' mud

Flow Pressures 24-23, 24-25

Shut in Pressures 1296-1211

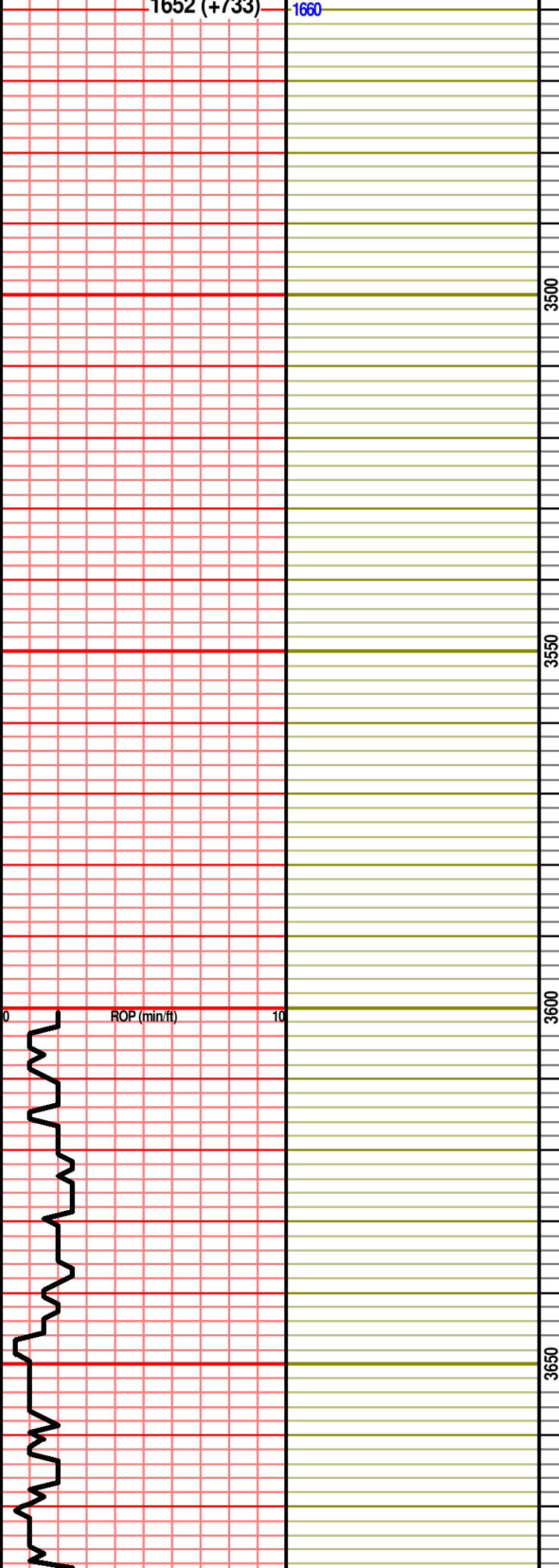
Hydrostatic 2311-2226

ROCK TYPES



1652 (+733)

1660



Ls., crm, fnxn, dns, bri ip, n/s

Ls., aa

Ls., tn-crm, vfn-fnxn, dns, hd, sli chlky, n/s

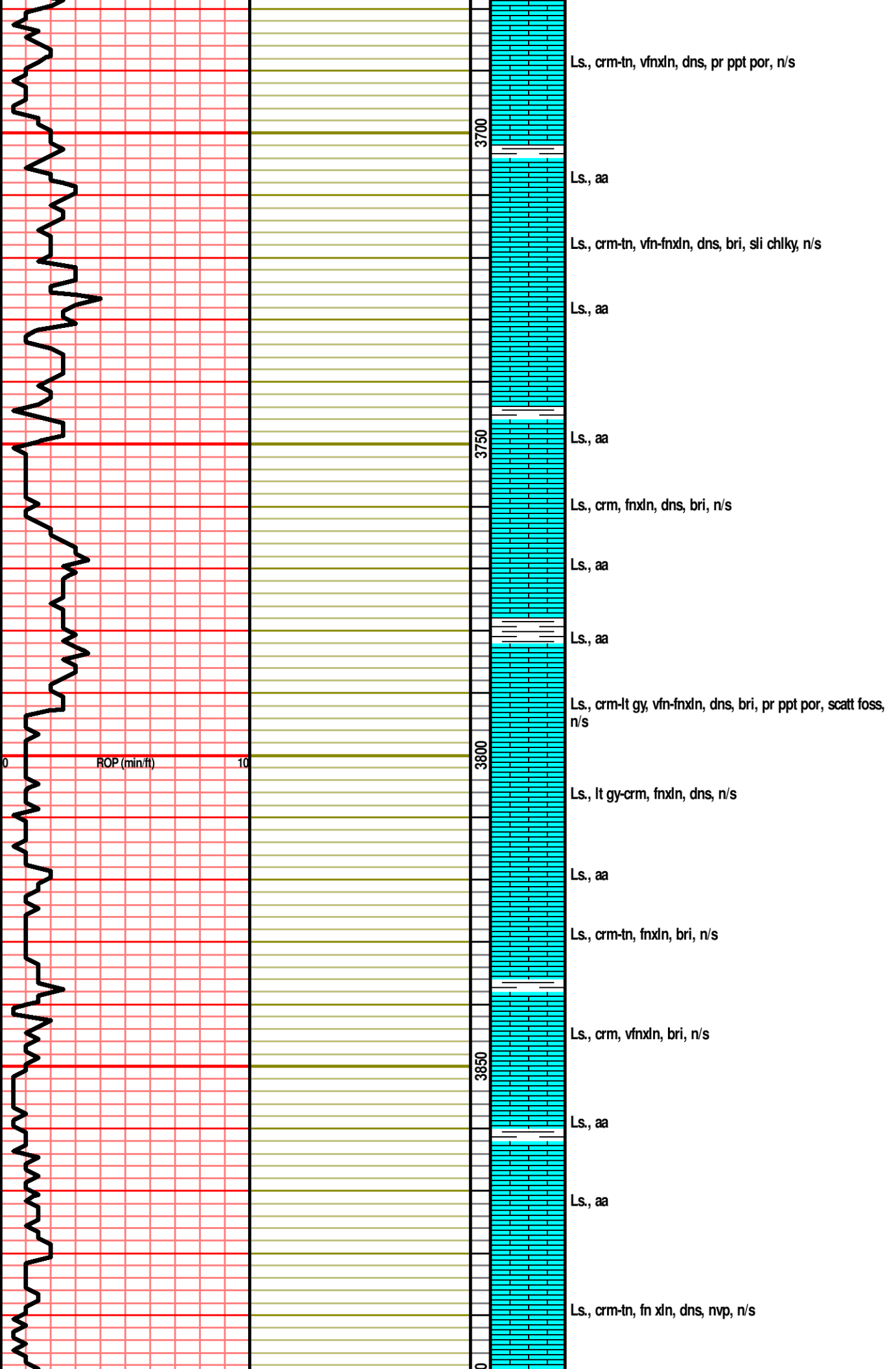
Ls., crm, vfn-fnxn, dns, bri, n/s

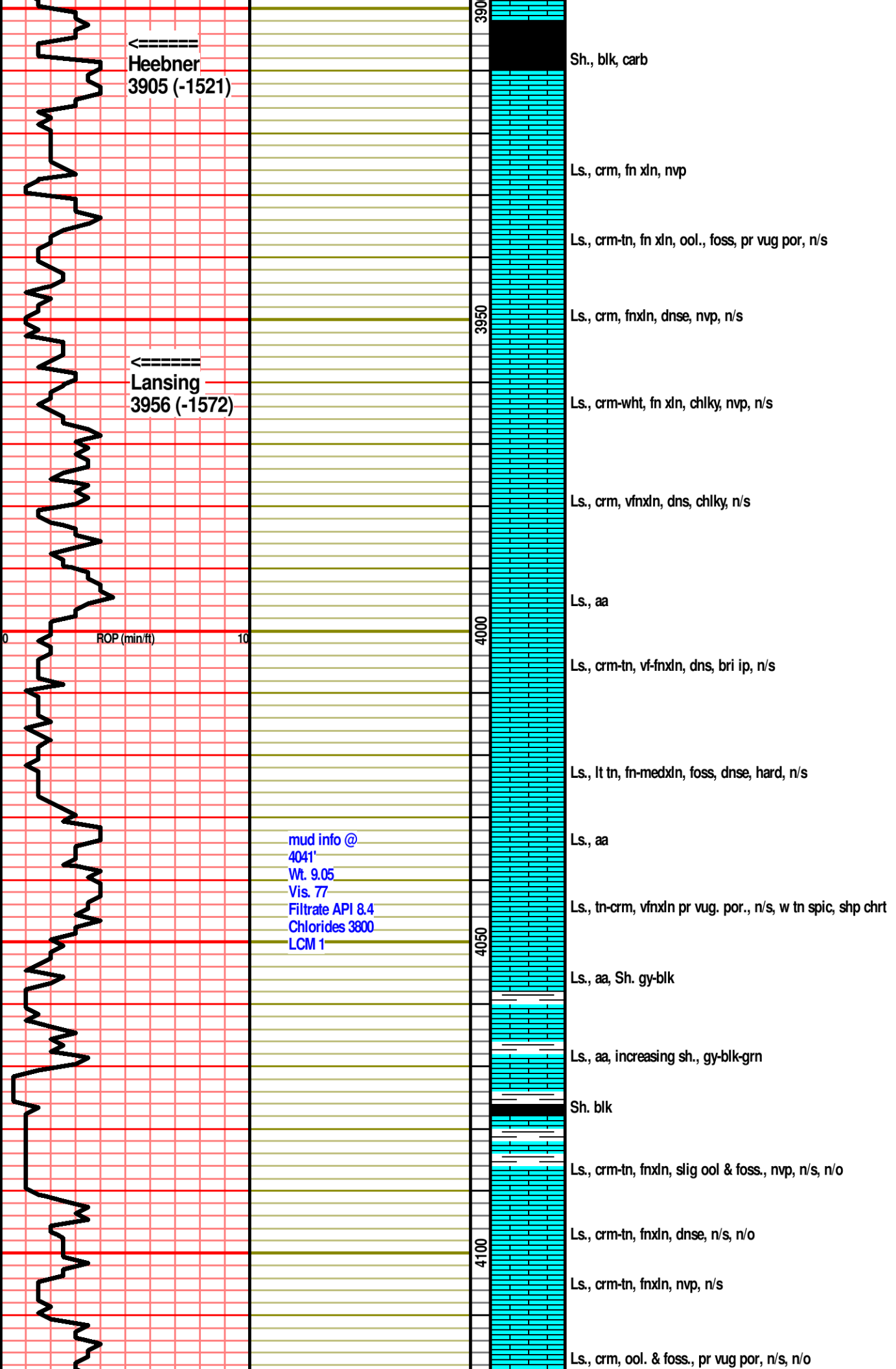
Ls., aa

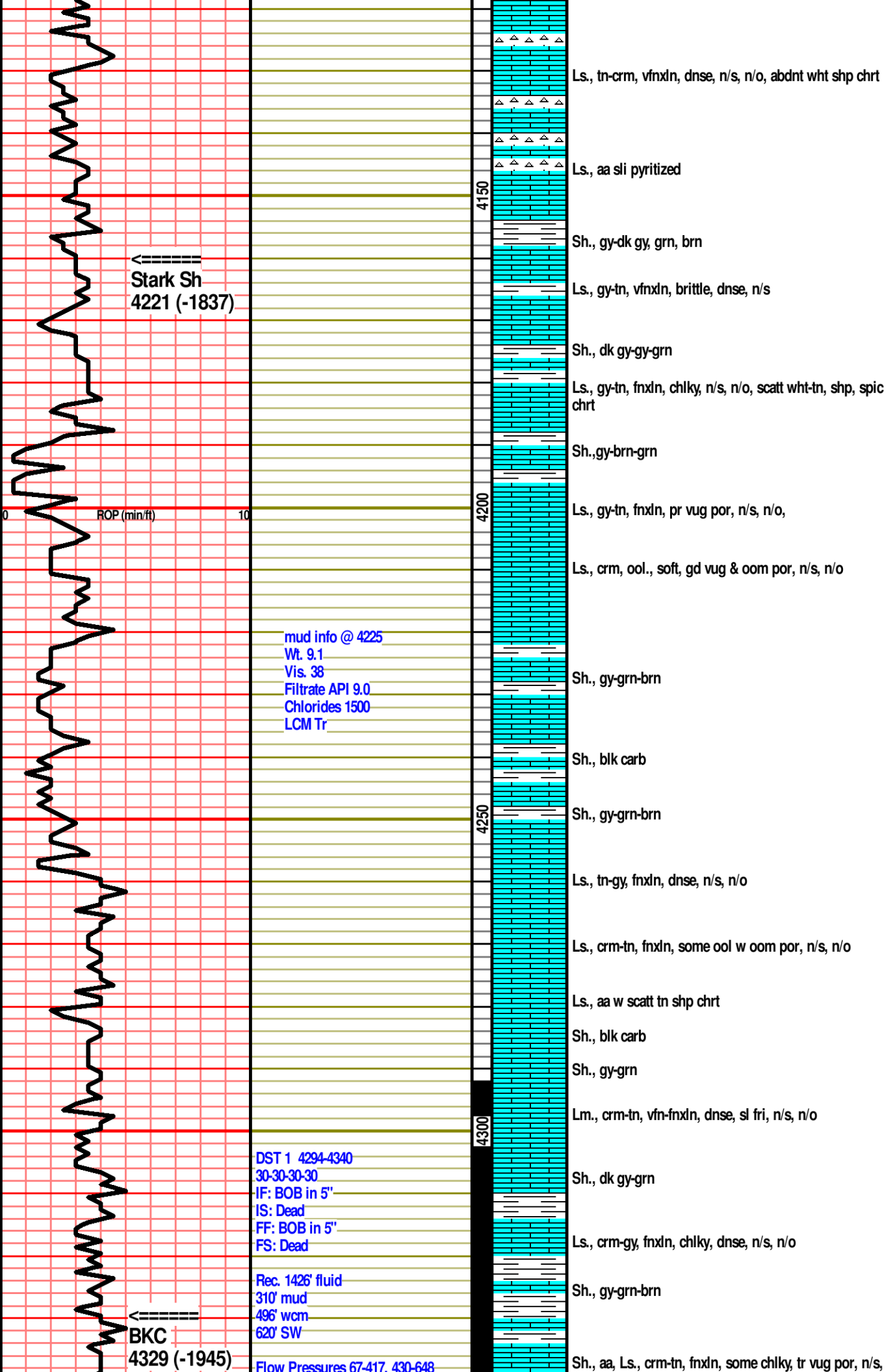
Ls., crm-lt gy, vfnxn, dns, hd, scatt ooids, n/s

Ls., crm-gy, fnxn, dns, hd, n/s

Ls., crm, vfnxn, bri, n/s







← Stark Sh
4221 (-1837)

mud info @ 4225
Wt. 9.1
Vis. 38
Filtrate API 9.0
Chlorides 1500
LCM Tr

← BKC
4329 (-1945)

DST 1 4294-4340
30-30-30-30
IF: BOB in 5"
IS: Dead
FF: BOB in 5"
FS: Dead

Rec. 1426' fluid
310' mud
496' wcm
620' SW

Flow Pressures 67-417, 430-648

Ls., tn-crm, vfnxn, dnse, n/s, n/o, abndt wht shp chrt
Ls., aa sli pyritized
Sh., gy-dk gy, grn, brn
Ls., gy-tn, vfnxn, brittle, dnse, n/s
Sh., dk gy-gy-grn
Ls., gy-tn, fnxln, chiky, n/s, n/o, scatt wht-tn, shp, spic chrt
Sh., gy-brn-grn
Ls., gy-tn, fnxln, pr vug por, n/s, n/o,
Ls., crm, ool., soft, gd vug & oom por, n/s, n/o
Sh., gy-grn-brn
Sh., blk carb
Sh., gy-grn-brn
Ls., tn-gy, fnxln, dnse, n/s, n/o
Ls., crm-tn, fnxln, some ool w oom por, n/s, n/o
Ls., aa w scatt tn shp chrt
Sh., blk carb
Sh., gy-grn
Lm., crm-tn, vfn-fnxln, dnse, sl fri, n/s, n/o
Sh., dk gy-grn
Ls., crm-gy, fnxln, chiky, dnse, n/s, n/o
Sh., gy-grn-brn
Sh., aa, Ls., crm-tn, fnxln, some chiky, tr vug por, n/s,

