



DRILL STEM TEST REPORT

Prepared For: **Murfin Drilling Co., Inc**

250 N. Water STE 300
Wichita, KS 67202

ATTN: Terry McLeod

Culwell 'B' #1-11

11-1s-37w Cheyenne KS

Start Date: 2013.06.10 @ 03:10:00

End Date: 2013.06.10 @ 10:22:15

Job Ticket #: 52621 DST #: 1

Trilobite Testing, Inc

PO Box 362 Hays, KS 67601

ph: 785-625-4778 fax: 785-625-5620

Printed: 2013.06.17 @ 14:15:48



**TRILOBITE
TESTING, INC.**

DRILL STEM TEST REPORT

Murfin Drilling Co., Inc

250 N. Water STE 300
Wichita, KS 67202

ATTN: Terry McLeod

11-1s-37w Cheyenne KS

Culwell 'B' #1-11

Job Ticket: 52621

DST#: 1

Test Start: 2013.06.10 @ 03:10:00

GENERAL INFORMATION:

Formation: **Oread**

Deviated: No Whipstock: ft (KB)

Time Tool Opened: 05:26:00

Time Test Ended: 10:22:15

Test Type: Conventional Bottom Hole (Initial)

Tester: James Winder

Unit No: 57

Interval: 3958.00 ft (KB) To 4025.00 ft (KB) (TVD)

Reference Elevations: 3150.00 ft (KB)

Total Depth: 4025.00 ft (KB) (TVD)

3140.00 ft (CF)

Hole Diameter: 7.88 inches Hole Condition: Fair

KB to GR/CF: 10.00 ft

Serial #: 8671

Inside

Press @ RunDepth: 23.22 psig @ 3959.00 ft (KB)

Capacity: 8000.00 psig

Start Date: 2013.06.10

End Date:

2013.06.10

Last Calib.:

2013.06.10

Start Time: 03:10:05

End Time:

10:22:14

Time On Btm:

2013.06.10 @ 05:25:45

Time Off Btm:

2013.06.10 @ 08:38:45

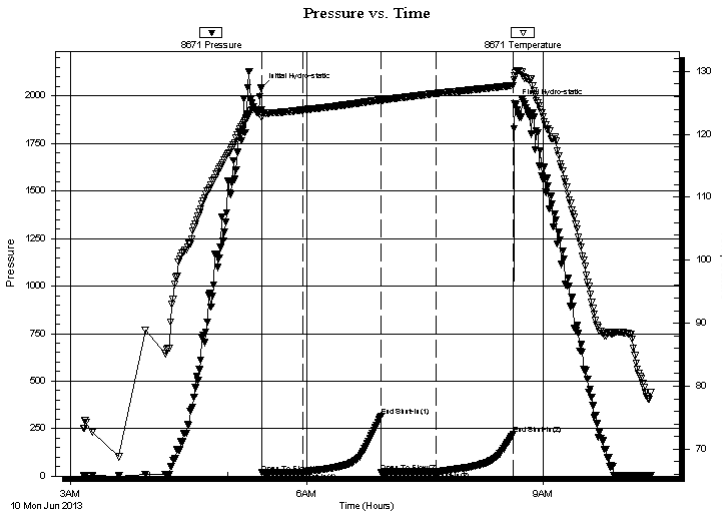
TEST COMMENT: 30 - IF: Blow built to 1/4" then died back, dead at 21 min.

60 - IS: No blow back

40 - FF: No blow

60 - FS: No blow back

PRESSURE SUMMARY



Time (Min.)	Pressure (psig)	Temp (deg F)	Annotation
0	2043.13	123.93	Initial Hydro-static
1	16.85	122.62	Open To Flow (1)
31	20.26	123.87	Shut-In(1)
91	313.67	125.50	End Shut-In(1)
91	20.13	125.30	Open To Flow (2)
133	23.22	126.49	Shut-In(2)
192	221.23	127.78	End Shut-In(2)
193	1960.14	129.24	Final Hydro-static

Recovery

Length (ft)	Description	Volume (bbl)
2.00	Mud 100%	0.01

Gas Rates

Choke (inches)	Pressure (psig)	Gas Rate (Mcf/d)



**TRILOBITE
TESTING, INC.**

DRILL STEM TEST REPORT

TOOL DIAGRAM

Murfin Drilling Co., Inc

11-1s-37w Cheyenne KS

250 N. Water STE 300
Wichita, KS 67202

Culwell 'B' #1-11

Job Ticket: 52621

DST#: 1

ATTN: Terry McLeod

Test Start: 2013.06.10 @ 03:10:00

Tool Information

Drill Pipe:	Length: 3425.00 ft	Diameter: 3.80 inches	Volume: 48.04 bbl	Tool Weight: 2500.00 lb
Heavy Wt. Pipe:	Length: 0.00 ft	Diameter: 0.00 inches	Volume: 0.00 bbl	Weight set on Packer: 25000.00 lb
Drill Collar:	Length: 533.00 ft	Diameter: 2.25 inches	Volume: 2.62 bbl	Weight to Pull Loose: 78000.00 lb
			<u>Total Volume: 50.66 bbl</u>	Tool Chased 0.00 ft
Drill Pipe Above KB:	23.00 ft			String Weight: Initial 70000.00 lb
Depth to Top Packer:	3958.00 ft			Final 70000.00 lb
Depth to Bottom Packer:	ft			
Interval between Packers:	67.00 ft			
Tool Length:	90.00 ft			
Number of Packers:	2	Diameter: 6.75 inches		

Tool Comments:

Tool Description	Length (ft)	Serial No.	Position	Depth (ft)	Accum. Lengths
------------------	-------------	------------	----------	------------	----------------

Shut In Tool	5.00			3940.00	
Hydraulic tool	5.00			3945.00	
Safety Joint	3.00			3948.00	
Packer	5.00			3953.00	23.00 Bottom Of Top Packer
Packer	5.00			3958.00	
Stubb	1.00			3959.00	
Recorder	0.00	8671	Inside	3959.00	
Recorder	0.00	8320	Outside	3959.00	
Perforations	26.00			3985.00	
Blank Spacing	33.00			4018.00	
Perforations	4.00			4022.00	
Bullnose	3.00			4025.00	67.00 Bottom Packers & Anchor

Total Tool Length: 90.00



**TRILOBITE
TESTING, INC.**

DRILL STEM TEST REPORT

FLUID SUMMARY

Murfin Drilling Co., Inc

11-1s-37w Cheyenne KS

250 N. Water STE 300
Wichita, KS 67202

Culwell 'B' #1-11

Job Ticket: 52621

DST#: 1

ATTN: Terry McLeod

Test Start: 2013.06.10 @ 03:10:00

Mud and Cushion Information

Mud Type: Gel Chem

Cushion Type:

Oil API:

deg API

Mud Weight: 9.00 lb/gal

Cushion Length:

ft

Water Salinity:

ppm

Viscosity: 65.00 sec/qt

Cushion Volume:

bbbl

Water Loss: 6.76 in³

Gas Cushion Type:

Resistivity: ohm.m

Gas Cushion Pressure:

psig

Salinity: 800.00 ppm

Filter Cake: 2.00 inches

Recovery Information

Recovery Table

Length ft	Description	Volume bbl
2.00	Mud 100%	0.010

Total Length: 2.00 ft Total Volume: 0.010 bbl

Num Fluid Samples: 0

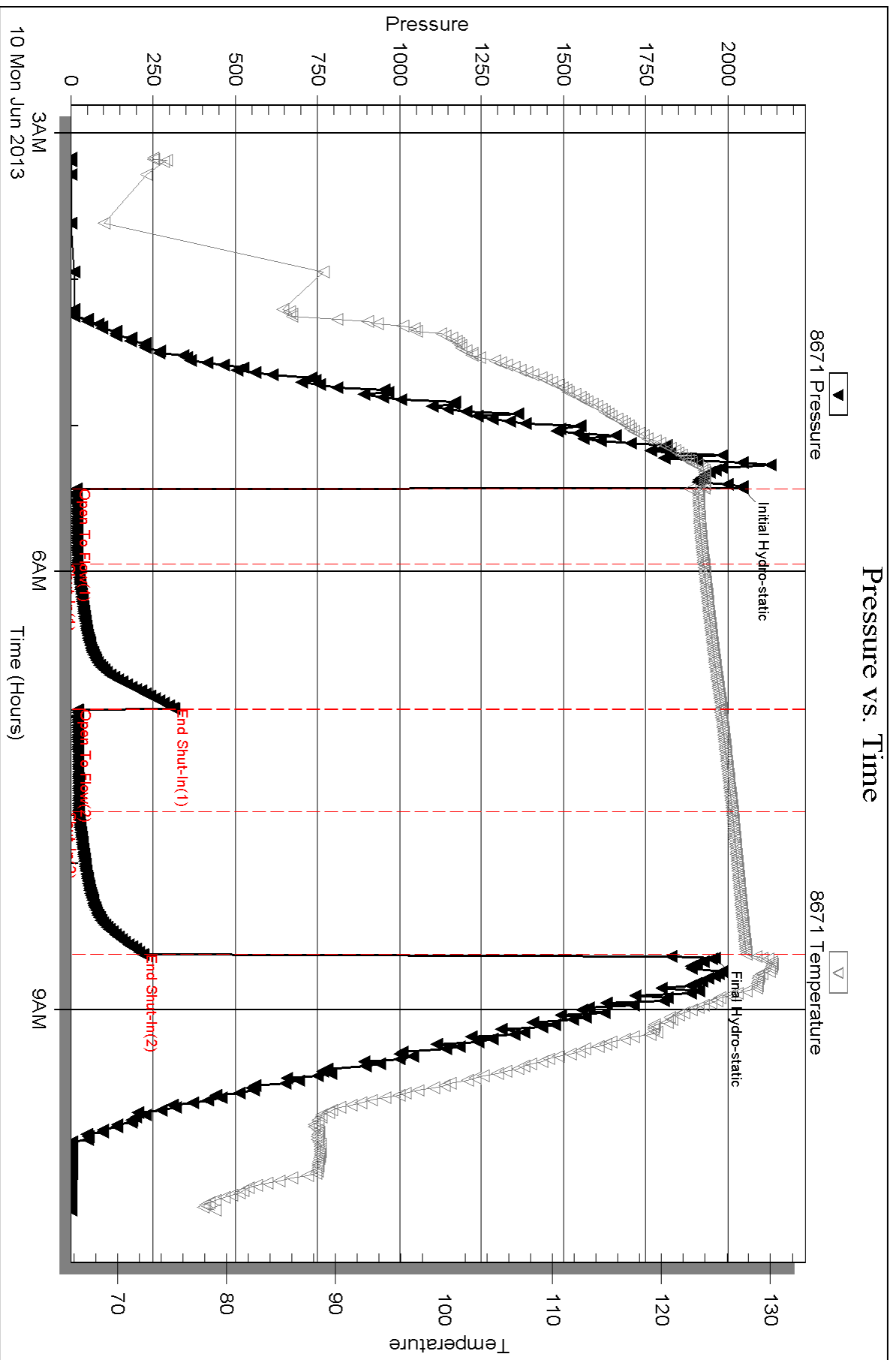
Num Gas Bombs: 0

Serial #:

Laboratory Name:

Laboratory Location:

Recovery Comments:

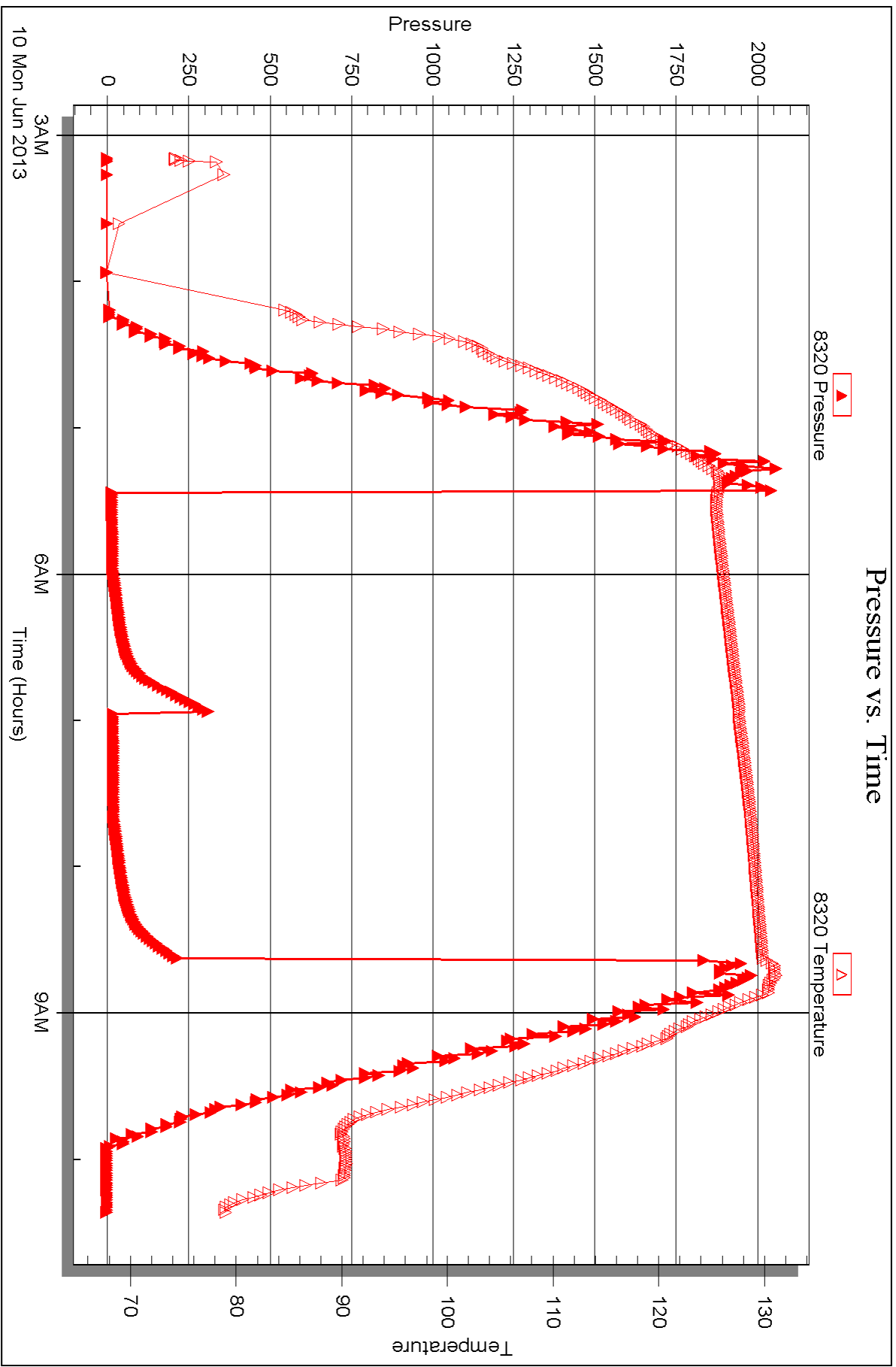


Serial #: 8320

Outside Murfin Drilling Co., Inc

Oilwell 'B' #1-11

DST Test Number: 1





DRILL STEM TEST REPORT

Prepared For: **Murfin Drilling Co., Inc**

250 N. Water STE 300
Wichita, KS 67202

ATTN: Terry McLeod

Culwell 'B' #1-11

11-1s-37w Cheyenne KS

Start Date: 2013.06.10 @ 22:18:00

End Date: 2013.06.11 @ 07:43:45

Job Ticket #: 52622 DST #: 2

Trilobite Testing, Inc

PO Box 362 Hays, KS 67601

ph: 785-625-4778 fax: 785-625-5620

Printed: 2013.06.17 @ 14:15:10



**TRILOBITE
TESTING, INC.**

DRILL STEM TEST REPORT

Murfin Drilling Co., Inc
250 N. Water STE 300
Wichita, KS 67202
ATTN: Terry McLeod

11-1s-37w Cheyenne KS

Culwell 'B' #1-11

Job Ticket: 52622

DST#: 2

Test Start: 2013.06.10 @ 22:18:00

GENERAL INFORMATION:

Formation: **LKC "D"**
 Deviated: No Whipstock: ft (KB)
 Time Tool Opened: 00:37:45
 Time Test Ended: 07:43:45
 Interval: **4103.00 ft (KB) To 4160.00 ft (KB) (TVD)**
 Total Depth: 4160.00 ft (KB) (TVD)
 Hole Diameter: 7.88 inches Hole Condition: Fair
 Test Type: Conventional Bottom Hole (Reset)
 Tester: James Winder
 Unit No: 57
 Reference Elevations: 3150.00 ft (KB)
 3140.00 ft (CF)
 KB to GR/CF: 10.00 ft

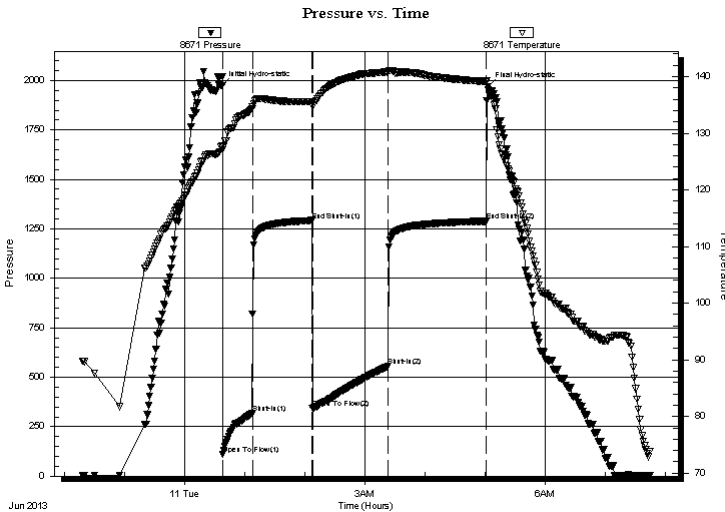
Serial #: 8671

Inside

Press @ Run Depth: 556.31 psig @ 4104.00 ft (KB) Capacity: 8000.00 psig
 Start Date: 2013.06.10 End Date: 2013.06.11 Last Calib.: 2013.06.11
 Start Time: 22:18:05 End Time: 07:43:45 Time On Btm: 2013.06.11 @ 00:37:15
 Time Off Btm: 2013.06.11 @ 05:02:30

TEST COMMENT: 30 - IF: Blow built to BOB (11") in 9 min.
 60 - IS: Blow back built to BOB in 40 min.
 75 - FF: Blow built to BOB in 8 1/2 min.
 90 - FS: Blow back built to BOB in 41 min.

PRESSURE SUMMARY



Time (Min.)	Pressure (psig)	Temp (deg F)	Annotation
0	1972.99	127.78	Initial Hydro-static
1	111.23	127.09	Open To Flow (1)
30	318.20	134.30	Shut-In(1)
90	1292.43	135.55	End Shut-In(1)
91	344.48	134.80	Open To Flow (2)
166	556.31	140.84	Shut-In(2)
264	1288.82	139.14	End Shut-In(2)
266	1969.47	137.73	Final Hydro-static

Recovery

Length (ft)	Description	Volume (bbl)
533.00	MCW w/oil spots 76%w, 20%m, 2%o, 2%g	2.62
286.00	GOWCM 67%m, 16%w, 10%g, 7%o	4.01
441.00	GO 72%o, 26%g, 2%m	6.19
0.00	GIP = 550'	0.00

* Recovery from multiple tests

Gas Rates

Choke (inches)	Pressure (psig)	Gas Rate (Mcf/d)



**TRILOBITE
TESTING, INC.**

DRILL STEM TEST REPORT

TOOL DIAGRAM

Murfin Drilling Co., Inc

11-1s-37w Cheyenne KS

250 N. Water STE 300
Wichita, KS 67202

Culwell 'B' #1-11

Job Ticket: 52622

DST#: 2

ATTN: Terry McLeod

Test Start: 2013.06.10 @ 22:18:00

Tool Information

Drill Pipe:	Length: 3581.00 ft	Diameter: 3.80 inches	Volume: 50.23 bbl	Tool Weight: 2500.00 lb
Heavy Wt. Pipe:	Length: 0.00 ft	Diameter: 0.00 inches	Volume: 0.00 bbl	Weight set on Packer: 25000.00 lb
Drill Collar:	Length: 533.00 ft	Diameter: 2.25 inches	Volume: 2.62 bbl	Weight to Pull Loose: 86000.00 lb
			<u>Total Volume: 52.85 bbl</u>	Tool Chased 0.00 ft
Drill Pipe Above KB:	34.00 ft			String Weight: Initial 70000.00 lb
Depth to Top Packer:	4103.00 ft			Final 76000.00 lb
Depth to Bottom Packer:	ft			
Interval between Packers:	57.00 ft			
Tool Length:	80.00 ft			
Number of Packers:	2	Diameter: 6.75 inches		

Tool Comments: Tool opened w hile going through bridge about 10' above bottom
reset tool and bled off before opening at bottom

Tool Description	Length (ft)	Serial No.	Position	Depth (ft)	Accum. Lengths
Shut In Tool	5.00			4085.00	
Hydraulic tool	5.00			4090.00	
Safety Joint	3.00			4093.00	
Packer	5.00			4098.00	23.00 Bottom Of Top Packer
Packer	5.00			4103.00	
Stubb	1.00			4104.00	
Recorder	0.00	8671	Inside	4104.00	
Recorder	0.00	8320	Outside	4104.00	
Perforations	15.00			4119.00	
Blank Spacing	33.00			4152.00	
Perforations	5.00			4157.00	
Bullnose	3.00			4160.00	57.00 Bottom Packers & Anchor

Total Tool Length: 80.00



**TRILOBITE
TESTING, INC.**

DRILL STEM TEST REPORT

FLUID SUMMARY

Murfin Drilling Co., Inc

11-1s-37w Cheyenne KS

250 N. Water STE 300
Wichita, KS 67202

Culwell 'B' #1-11

Job Ticket: 52622

DST#: 2

ATTN: Terry McLeod

Test Start: 2013.06.10 @ 22:18:00

Mud and Cushion Information

Mud Type: Gel Chem

Cushion Type:

Oil API:

23.2 deg API

Mud Weight: 9.00 lb/gal

Cushion Length:

ft

Water Salinity:

22500 ppm

Viscosity: 56.00 sec/qt

Cushion Volume:

bbbl

Water Loss: 6.75 in³

Gas Cushion Type:

Resistivity: ohm.m

Gas Cushion Pressure:

psig

Salinity: 800.00 ppm

Filter Cake: 2.00 inches

Recovery Information

Recovery Table

Length ft	Description	Volume bbbl
533.00	MCW w/oil spots 76%w , 20%m, 2%o, 2%g	2.621
286.00	GOWCM 67%m, 16%w , 10%g, 7%o	4.012
441.00	GO 72%o, 26%g, 2%m	6.186
0.00	GIP = 550'	0.000

Total Length: 1260.00 ft Total Volume: 12.819 bbl

Num Fluid Samples: 0

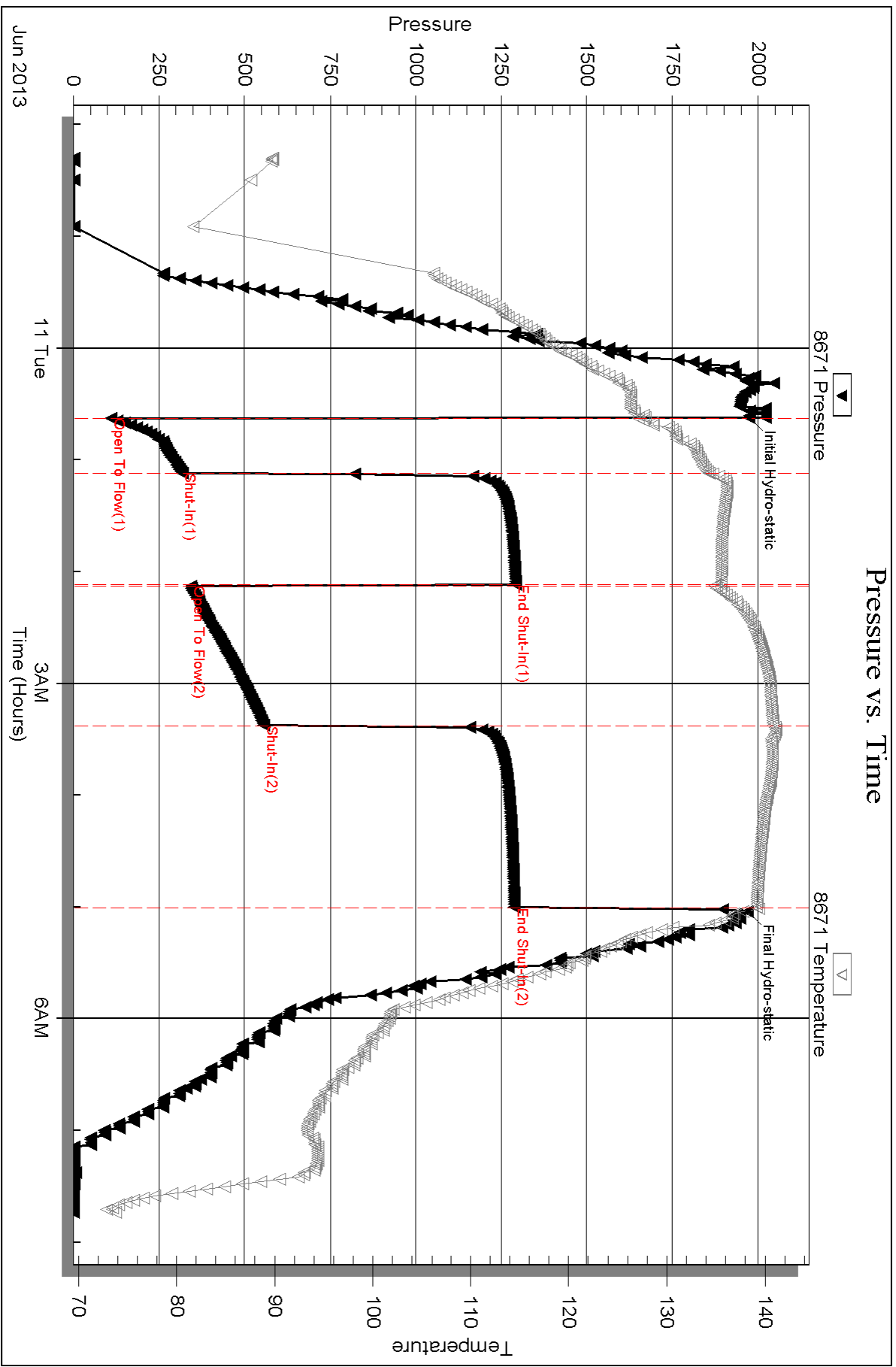
Num Gas Bombs: 0

Serial #:

Laboratory Name:

Laboratory Location:

Recovery Comments: Gravity = 24.6 api @ 74 deg F Corrected Gravity = 23.2 api
RW = .275 ohms @ 77.7 deg F Chlorides = 22,500 ppm

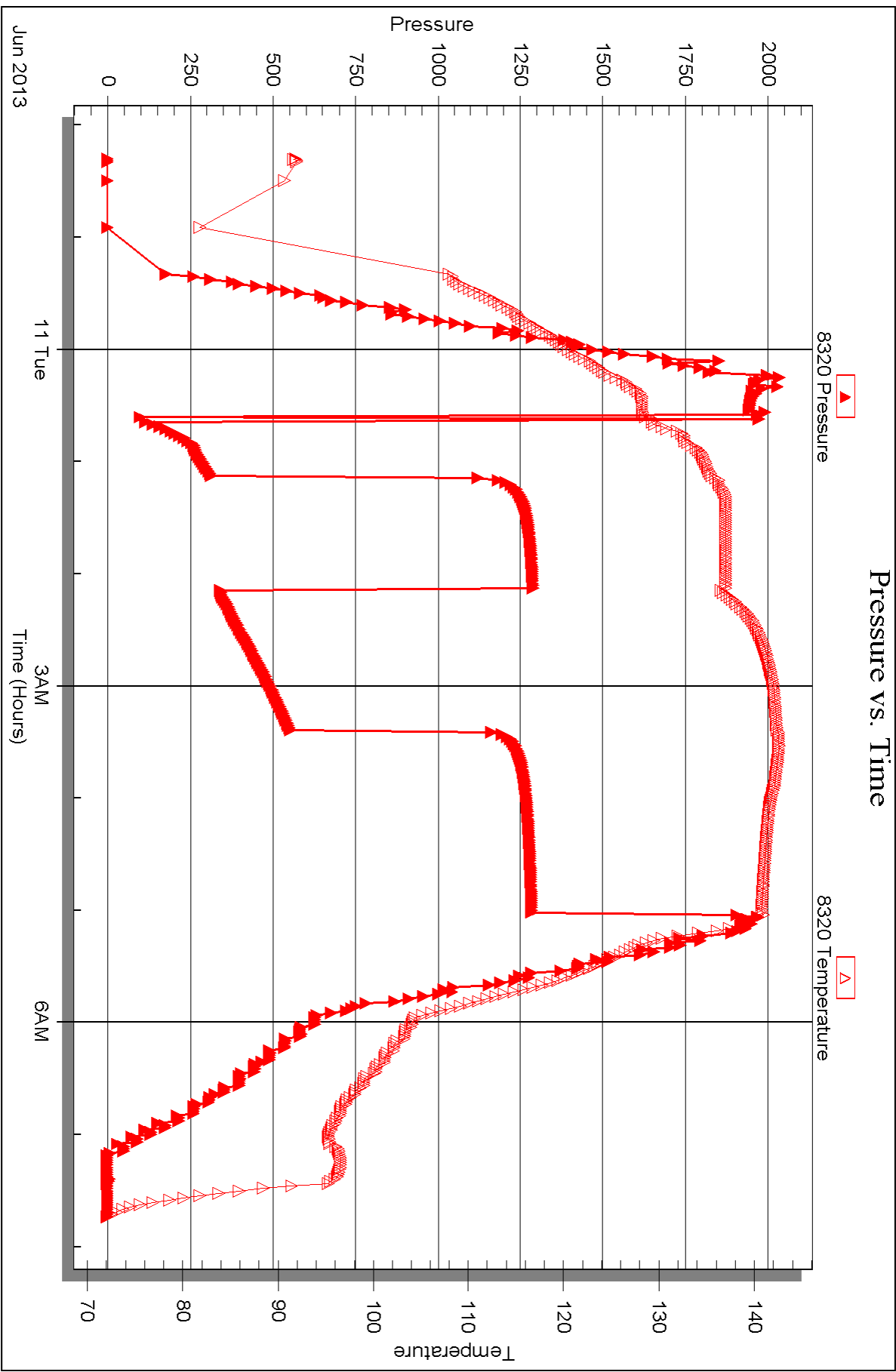


Serial #: 8320

Outside Murfin Drilling Co., Inc

Oilwell 'B' #1-11

DST Test Number: 2





DRILL STEM TEST REPORT

Prepared For: **Murfin Drilling Co., Inc**

250 N. Water STE 300
Wichita, KS 67202

ATTN: Terry McLeod

Culwell 'B' #1-11

11-1s-37w Cheyenne KS

Start Date: 2013.06.11 @ 16:25:00

End Date: 2013.06.12 @ 00:30:15

Job Ticket #: 52623 DST #: 3

Trilobite Testing, Inc

PO Box 362 Hays, KS 67601

ph: 785-625-4778 fax: 785-625-5620

Printed: 2013.06.17 @ 14:14:36

Murfin Drilling Co., Inc

11-1s-37w Cheyenne KS

Culwell 'B' #1-11

DST # 3

LKC "G"

2013.06.11



**TRILOBITE
TESTING, INC.**

DRILL STEM TEST REPORT

Murfin Drilling Co., Inc
250 N. Water STE 300
Wichita, KS 67202
ATTN: Terry McLeod

11-1s-37w Cheyenne KS

Culwell 'B' #1-11

Job Ticket: 52623

DST#: 3

Test Start: 2013.06.11 @ 16:25:00

GENERAL INFORMATION:

Formation: **LKC "G"**
 Deviated: No Whipstock: ft (KB)
 Time Tool Opened: 18:37:00
 Time Test Ended: 00:30:15
 Interval: **4169.00 ft (KB) To 4220.00 ft (KB) (TVD)**
 Total Depth: 4220.00 ft (KB) (TVD)
 Hole Diameter: 7.88 inches Hole Condition: Fair
 Test Type: Conventional Bottom Hole (Reset)
 Tester: James Winder
 Unit No: 57
 Reference Elevations: 3150.00 ft (KB)
 3140.00 ft (CF)
 KB to GR/CF: 10.00 ft

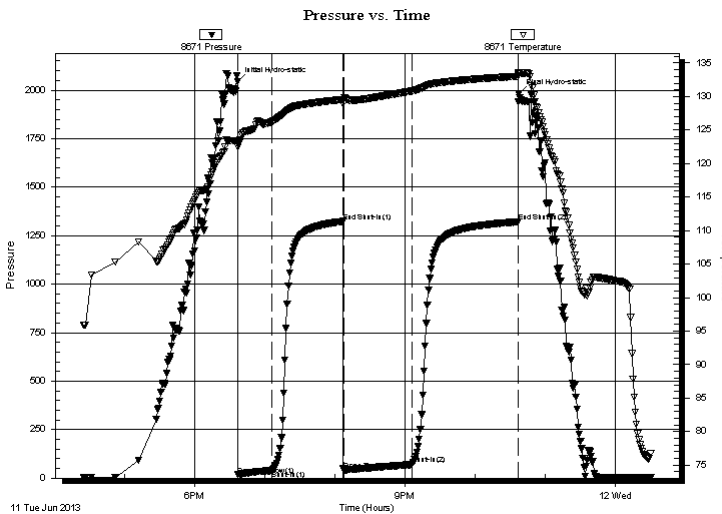
Serial #: 8671

Inside

Press @ Run Depth: 70.38 psig @ 4170.00 ft (KB) Capacity: 8000.00 psig
 Start Date: 2013.06.11 End Date: 2013.06.12 Last Calib.: 2013.06.12
 Start Time: 16:25:05 End Time: 00:30:14 Time On Btm: 2013.06.11 @ 18:36:45
 Time Off Btm: 2013.06.11 @ 22:37:30

TEST COMMENT: 30 - IF: Blow built to 3 3/4"
 60 - IS: No blow back
 60 - FF: Blow built to 7 1/4"
 90 - FS: No blow back

PRESSURE SUMMARY



Time (Min.)	Pressure (psig)	Temp (deg F)	Annotation
0	2043.42	123.47	Initial Hydro-static
1	17.33	122.42	Open To Flow (1)
30	39.17	126.24	Shut-In(1)
91	1323.13	129.57	End Shut-In(1)
91	42.27	129.52	Open To Flow (2)
150	70.38	130.85	Shut-In(2)
240	1320.72	133.03	End Shut-In(2)
241	1981.50	133.61	Final Hydro-static

Recovery

Length (ft)	Description	Volume (bbl)
60.00	GOM 51% _m , 36% _o , 13% _g	0.30
30.00	MCO 76% _o , 22% _m , 2% _g	0.15
45.00	CGO 84% _o , 10% _g , 6% _m	0.22
0.00	GIP = 45'+	0.00

Gas Rates

	Choke (inches)	Pressure (psig)	Gas Rate (Mcf/d)

* Recovery from multiple tests



**TRILOBITE
TESTING, INC.**

DRILL STEM TEST REPORT

TOOL DIAGRAM

Murfin Drilling Co., Inc

11-1s-37w Cheyenne KS

250 N. Water STE 300
Wichita, KS 67202

Culwell 'B' #1-11

Job Ticket: 52623

DST#: 3

ATTN: Terry McLeod

Test Start: 2013.06.11 @ 16:25:00

Tool Information

Drill Pipe:	Length: 3646.00 ft	Diameter: 3.80 inches	Volume: 51.14 bbl	Tool Weight: 2500.00 lb
Heavy Wt. Pipe:	Length: 0.00 ft	Diameter: 0.00 inches	Volume: 0.00 bbl	Weight set on Packer: 25000.00 lb
Drill Collar:	Length: 533.00 ft	Diameter: 2.25 inches	Volume: 2.62 bbl	Weight to Pull Loose: 90000.00 lb
			<u>Total Volume: 53.76 bbl</u>	Tool Chased 0.00 ft
Drill Pipe Above KB:	33.00 ft			String Weight: Initial 70000.00 lb
Depth to Top Packer:	4169.00 ft			Final 72000.00 lb
Depth to Bottom Packer:	ft			
Interval between Packers:	51.00 ft			
Tool Length:	74.00 ft			
Number of Packers:	2	Diameter: 6.75 inches		

Tool Comments:

Tool Description	Length (ft)	Serial No.	Position	Depth (ft)	Accum. Lengths
------------------	-------------	------------	----------	------------	----------------

Shut In Tool	5.00			4151.00	
Hydraulic tool	5.00			4156.00	
Safety Joint	3.00			4159.00	
Packer	5.00			4164.00	23.00 Bottom Of Top Packer
Packer	5.00			4169.00	
Stubb	1.00			4170.00	
Recorder	0.00	8671	Inside	4170.00	
Recorder	0.00	8320	Outside	4170.00	
Perforations	10.00			4180.00	
Blank Spacing	33.00			4213.00	
Perforations	4.00			4217.00	
Bullnose	3.00			4220.00	51.00 Bottom Packers & Anchor

Total Tool Length: 74.00



**TRILOBITE
TESTING, INC.**

DRILL STEM TEST REPORT

FLUID SUMMARY

Murfin Drilling Co., Inc

11-1s-37w Cheyenne KS

250 N. Water STE 300
Wichita, KS 67202

Culwell 'B' #1-11

Job Ticket: 52623

DST#: 3

ATTN: Terry McLeod

Test Start: 2013.06.11 @ 16:25:00

Mud and Cushion Information

Mud Type: Gel Chem

Cushion Type:

Oil API:

29.2 deg API

Mud Weight: 9.00 lb/gal

Cushion Length:

ft

Water Salinity:

ppm

Viscosity: 54.00 sec/qt

Cushion Volume:

bbbl

Water Loss: 5.57 in³

Gas Cushion Type:

Resistivity: ohm.m

Gas Cushion Pressure:

psig

Salinity: 2600.00 ppm

Filter Cake: 2.00 inches

Recovery Information

Recovery Table

Length ft	Description	Volume bbbl
60.00	GOM 51% <i>m</i> , 36% <i>o</i> , 13% <i>g</i>	0.295
30.00	MCO 76% <i>o</i> , 22% <i>m</i> , 2% <i>g</i>	0.148
45.00	CGO 84% <i>o</i> , 10% <i>g</i> , 6% <i>m</i>	0.221
0.00	GIP = 45'+	0.000

Total Length: 135.00 ft Total Volume: 0.664 bbl

Num Fluid Samples: 0

Num Gas Bombs: 0

Serial #:

Laboratory Name:

Laboratory Location:

Recovery Comments: Gravity = 31.4 api @ 82 deg F

Corrected Gravity = 29.2 api

Serial #: 8671

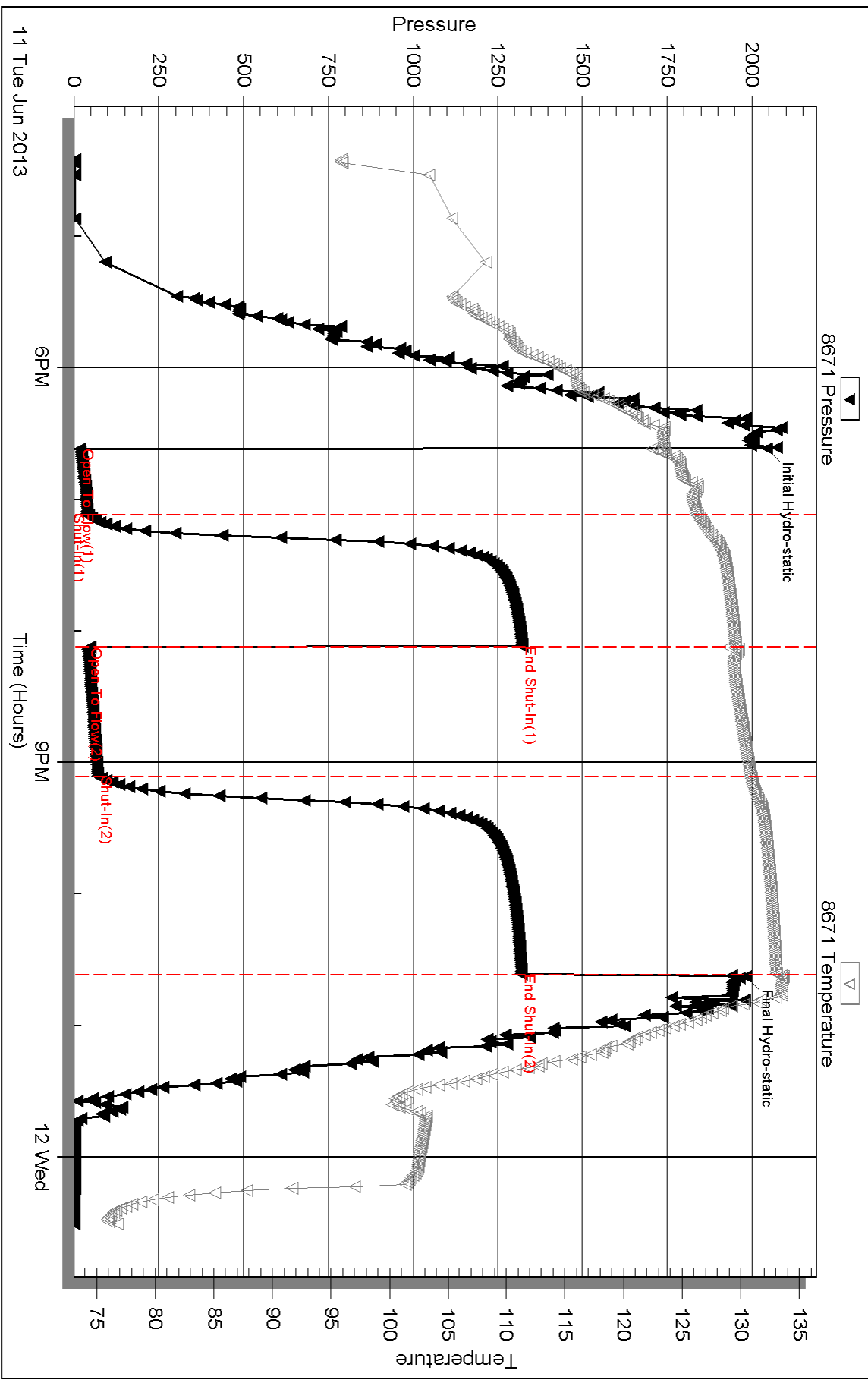
Inside

Murfin Drilling Co., Inc

Oilwell 'B' #1-11

DST Test Number: 3

Pressure vs. Time

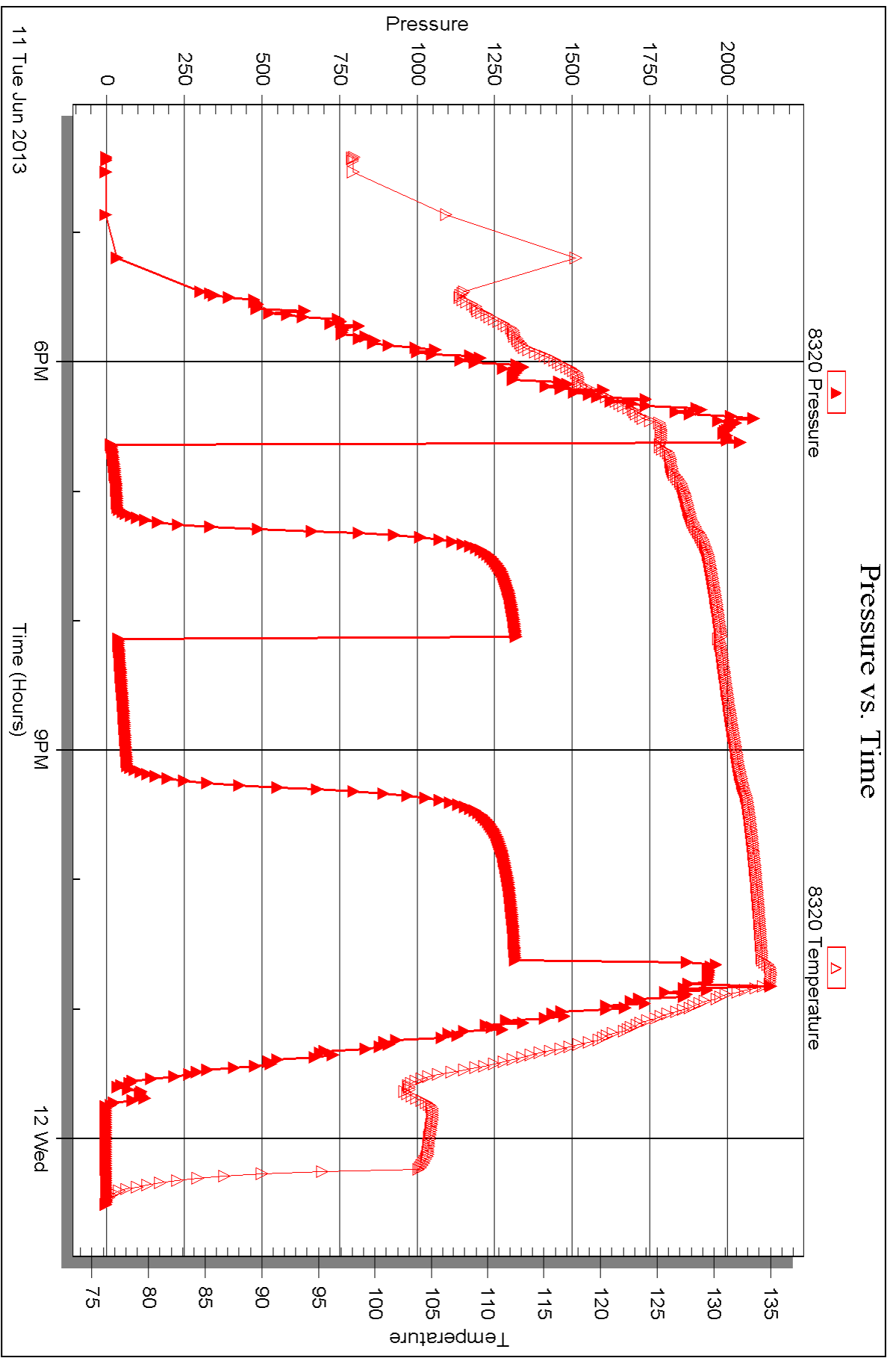


Serial #: 8320

Outside Murfin Drilling Co., Inc

Oilwell 'B' #1-11

DST Test Number: 3



Triobite Testing, Inc

Ref. No: 52623

Printed: 2013.06.17 @ 14:14:39



DRILL STEM TEST REPORT

Prepared For: **Murfin Drilling Co., Inc**

250 N. Water STE 300
Wichita, KS 67202

ATTN: Terry McLeod

Culwell 'B' #1-11

11-1s-37w Cheyenne KS

Start Date: 2013.06.12 @ 14:54:00

End Date: 2013.06.12 @ 22:25:15

Job Ticket #: 52624 DST #: 4

Trilobite Testing, Inc

PO Box 362 Hays, KS 67601

ph: 785-625-4778 fax: 785-625-5620

Printed: 2013.06.17 @ 14:13:41

Murfin Drilling Co., Inc

11-1s-37w Cheyenne KS

Culwell 'B' #1-11

DST # 4

LKC "H - J"

2013.06.12



**TRILOBITE
TESTING, INC.**

DRILL STEM TEST REPORT

Murfin Drilling Co., Inc
250 N. Water STE 300
Wichita, KS 67202
ATTN: Terry McLeod

11-1s-37w Cheyenne KS

Culwell 'B' #1-11

Job Ticket: 52624

DST#: 4

Test Start: 2013.06.12 @ 14:54:00

GENERAL INFORMATION:

Formation: **LKC "H - J"**
 Deviated: No Whipstock: ft (KB)
 Time Tool Opened: 17:41:00
 Time Test Ended: 22:25:15
 Interval: **4213.00 ft (KB) To 4320.00 ft (KB) (TVD)**
 Total Depth: 4320.00 ft (KB) (TVD)
 Hole Diameter: 7.88 inches Hole Condition: Fair
 Test Type: Conventional Bottom Hole (Reset)
 Tester: James Winder
 Unit No: 57
 Reference Elevations: 3150.00 ft (KB)
 3140.00 ft (CF)
 KB to GR/CF: 10.00 ft

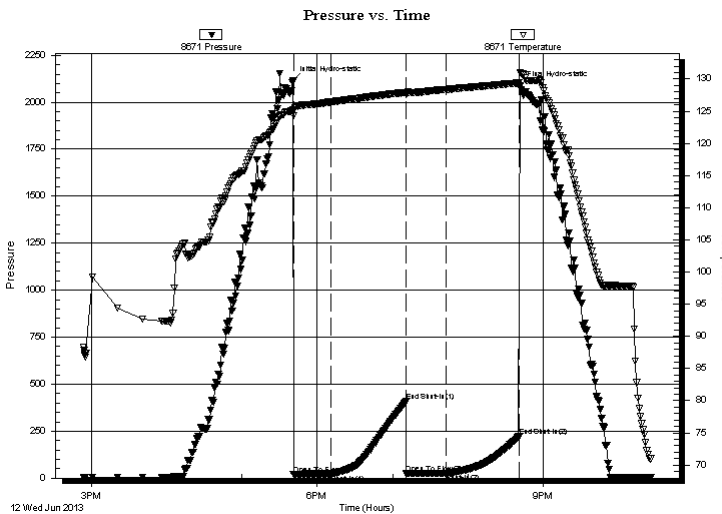
Serial #: 8671

Inside

Press @ Run Depth: 24.90 psig @ 4214.00 ft (KB) Capacity: 8000.00 psig
 Start Date: 2013.06.12 End Date: 2013.06.12 Last Calib.: 2013.06.12
 Start Time: 14:54:05 End Time: 22:25:14 Time On Btm: 2013.06.12 @ 17:40:45
 Time Off Btm: 2013.06.12 @ 20:41:15

TEST COMMENT: 30 - IF: 1/8" blow at open, dead in 9 min.
 60 - IS: No blow back
 30 - FF: No blow
 60 - FS: No blow back

PRESSURE SUMMARY



Time (Min.)	Pressure (psig)	Temp (deg F)	Annotation
0	2114.55	125.14	Initial Hydro-static
1	19.83	124.28	Open To Flow (1)
30	22.80	126.43	Shut-In(1)
90	408.75	127.93	End Shut-In(1)
91	23.42	127.63	Open To Flow (2)
122	24.90	128.34	Shut-In(2)
180	221.79	129.40	End Shut-In(2)
181	2087.00	131.03	Final Hydro-static

Recovery

Length (ft)	Description	Volume (bbl)
10.00	Mud w /trace oil 100%m	0.05

Gas Rates

	Choke (inches)	Pressure (psig)	Gas Rate (Mcf/d)

* Recovery from multiple tests



**TRILOBITE
TESTING, INC.**

DRILL STEM TEST REPORT

TOOL DIAGRAM

Murfin Drilling Co., Inc

11-1s-37w Cheyenne KS

250 N. Water STE 300
Wichita, KS 67202

Culwell 'B' #1-11

Job Ticket: 52624

DST#: 4

ATTN: Terry McLeod

Test Start: 2013.06.12 @ 14:54:00

Tool Information

Drill Pipe:	Length: 3677.00 ft	Diameter: 3.80 inches	Volume: 51.58 bbl	Tool Weight: 2500.00 lb
Heavy Wt. Pipe:	Length: 0.00 ft	Diameter: 0.00 inches	Volume: 0.00 bbl	Weight set on Packer: 25000.00 lb
Drill Collar:	Length: 533.00 ft	Diameter: 2.25 inches	Volume: 2.62 bbl	Weight to Pull Loose: 88000.00 lb
			<u>Total Volume: 54.20 bbl</u>	Tool Chased 0.00 ft
Drill Pipe Above KB:	20.00 ft			String Weight: Initial 72000.00 lb
Depth to Top Packer:	4213.00 ft			Final 72000.00 lb
Depth to Bottom Packer:	ft			
Interval between Packers:	107.00 ft			
Tool Length:	130.00 ft			
Number of Packers:	2	Diameter: 6.75 inches		

Tool Comments:

Tool Description	Length (ft)	Serial No.	Position	Depth (ft)	Accum. Lengths
------------------	-------------	------------	----------	------------	----------------

Shut In Tool	5.00			4195.00	
Hydraulic tool	5.00			4200.00	
Safety Joint	3.00			4203.00	
Packer	5.00			4208.00	23.00 Bottom Of Top Packer
Packer	5.00			4213.00	
Stubb	1.00			4214.00	
Recorder	0.00	8671	Inside	4214.00	
Recorder	0.00	8320	Outside	4214.00	
Perforations	5.00			4219.00	
Blank Spacing	97.00			4316.00	
Perforations	1.00			4317.00	
Bullnose	3.00			4320.00	107.00 Bottom Packers & Anchor

Total Tool Length: 130.00



**TRILOBITE
TESTING, INC.**

DRILL STEM TEST REPORT

FLUID SUMMARY

Murfin Drilling Co., Inc

11-1s-37w Cheyenne KS

250 N. Water STE 300
Wichita, KS 67202

Culwell 'B' #1-11

Job Ticket: 52624

DST#: 4

ATTN: Terry McLeod

Test Start: 2013.06.12 @ 14:54:00

Mud and Cushion Information

Mud Type: Gel Chem

Cushion Type:

Oil API:

deg API

Mud Weight: 9.00 lb/gal

Cushion Length:

ft

Water Salinity:

ppm

Viscosity: 71.00 sec/qt

Cushion Volume:

bbbl

Water Loss: 5.99 in³

Gas Cushion Type:

Resistivity: ohm.m

Gas Cushion Pressure:

psig

Salinity: 2600.00 ppm

Filter Cake: 2.00 inches

Recovery Information

Recovery Table

Length ft	Description	Volume bbl
10.00	Mud w /trace oil 100%m	0.049

Total Length: 10.00 ft Total Volume: 0.049 bbl

Num Fluid Samples: 0

Num Gas Bombs: 0

Serial #:

Laboratory Name:

Laboratory Location:

Recovery Comments:

Serial #: 8671

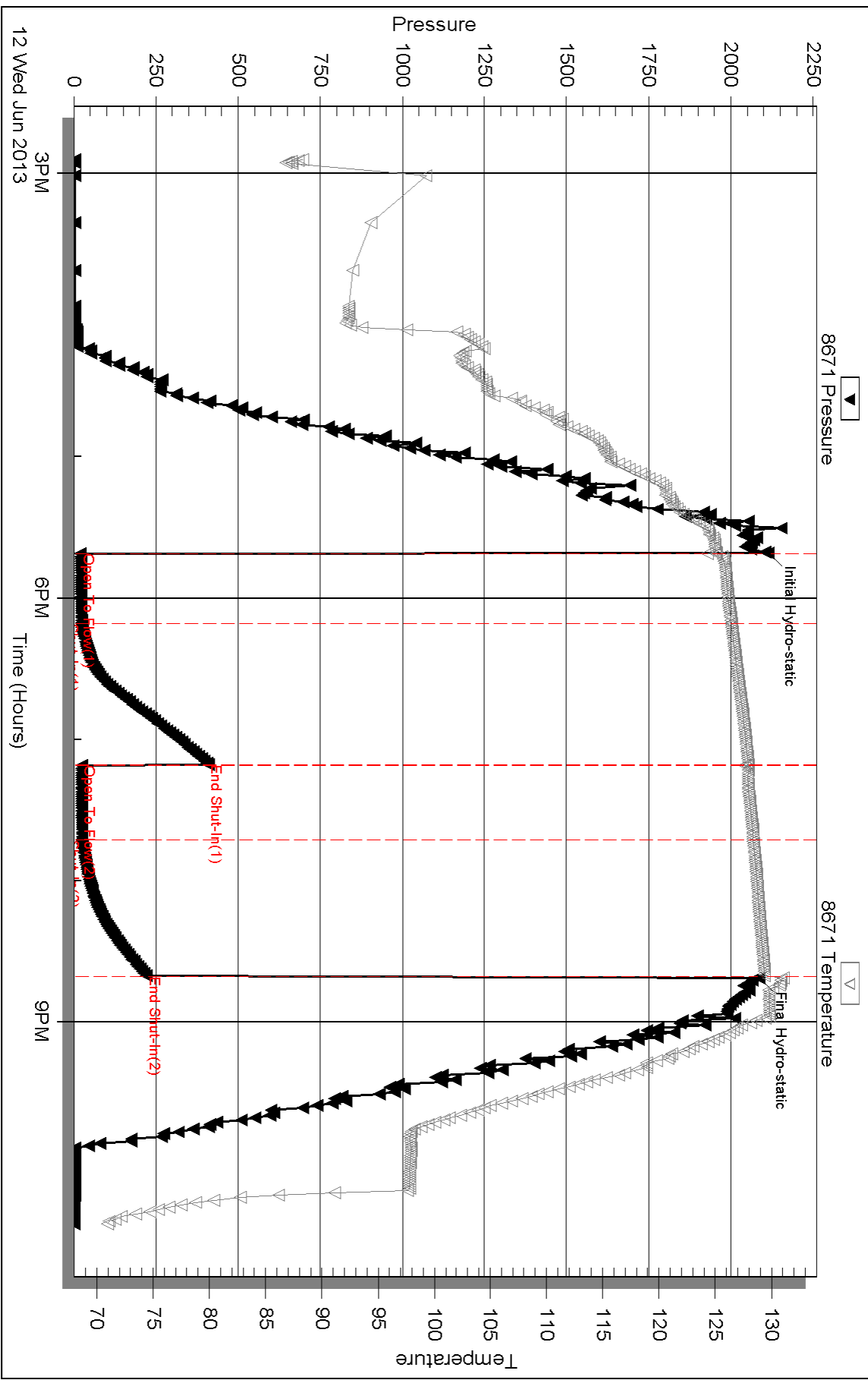
Inside

Murfin Drilling Co., Inc

Oilwell 'B' #1-11

DST Test Number: 4

Pressure vs. Time

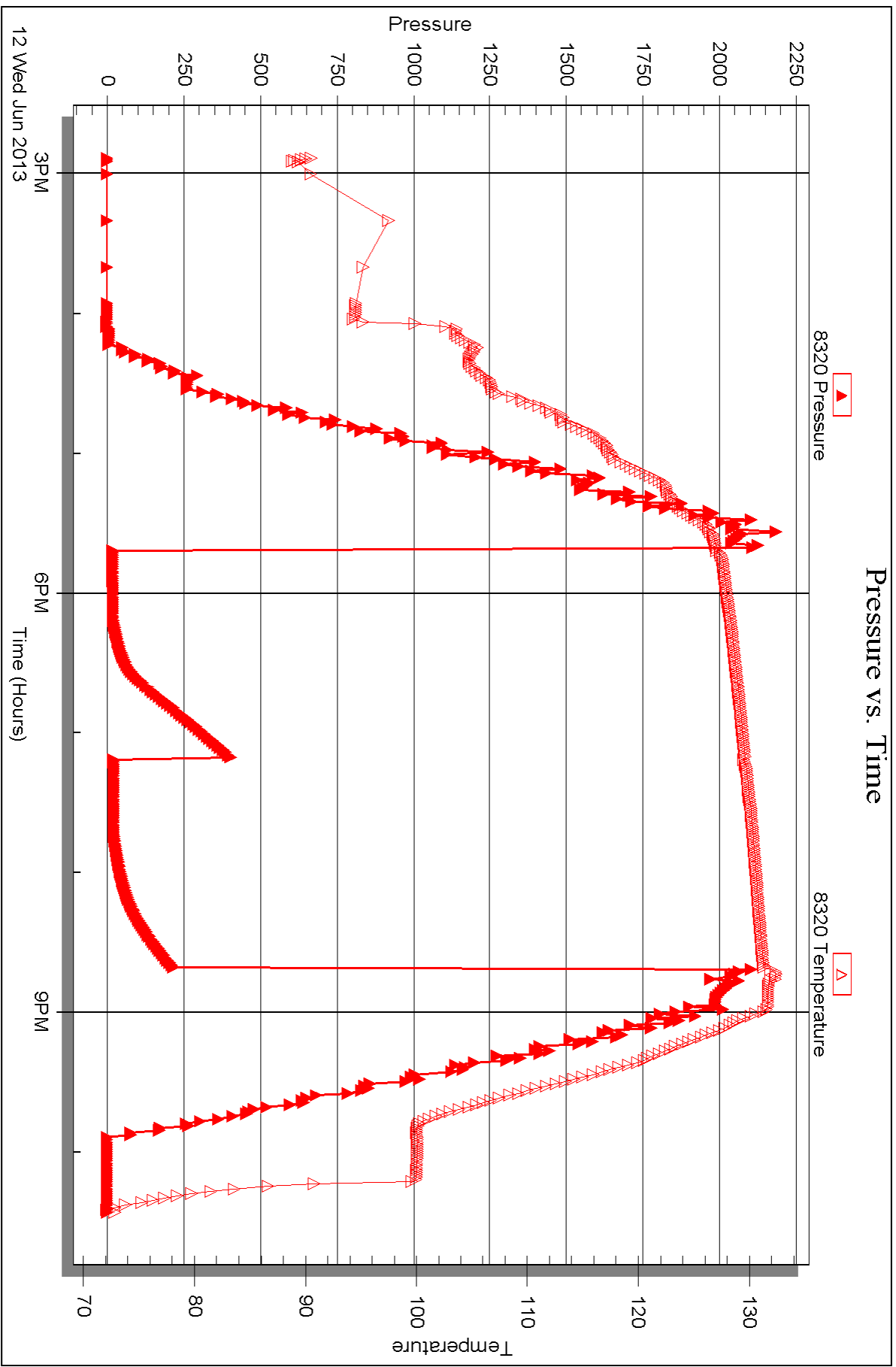


Serial #: 8320

Outside Murfin Drilling Co., Inc

Oilwell 'B' #1-11

DST Test Number: 4





DRILL STEM TEST REPORT

Prepared For: **Murfin Drilling Co., Inc**

250 N. Water STE 300
Wichita, KS 67202

ATTN: Terry McLeod

Culwell 'B' #1-11

11-1s-37w Cheyenne KS

Start Date: 2013.06.13 @ 16:00:00

End Date: 2013.06.13 @ 22:53:15

Job Ticket #: 52625 DST #: 5

Trilobite Testing, Inc

PO Box 362 Hays, KS 67601

ph: 785-625-4778 fax: 785-625-5620

Printed: 2013.06.17 @ 14:12:51



TRILOBITE TESTING, INC.

DRILL STEM TEST REPORT

Murfin Drilling Co., Inc
 250 N. Water STE 300
 Wichita, KS 67202
 ATTN: Terry McLeod

11-1s-37w Cheyenne KS

Culwell 'B' #1-11

Job Ticket: 52625 **DST#: 5**
 Test Start: 2013.06.13 @ 16:00:00

GENERAL INFORMATION:

Formation: **Pawnee**
 Deviated: No Whipstock: ft (KB)
 Time Tool Opened: 18:11:30
 Time Test Ended: 22:53:15
 Interval: **4454.00 ft (KB) To 4500.00 ft (KB) (TVD)**
 Total Depth: 4500.00 ft (KB) (TVD)
 Hole Diameter: 7.88 inches Hole Condition: Fair
 Test Type: Conventional Bottom Hole (Reset)
 Tester: James Winder
 Unit No: 57
 Reference Elevations: 3150.00 ft (KB)
 3140.00 ft (CF)
 KB to GR/CF: 10.00 ft

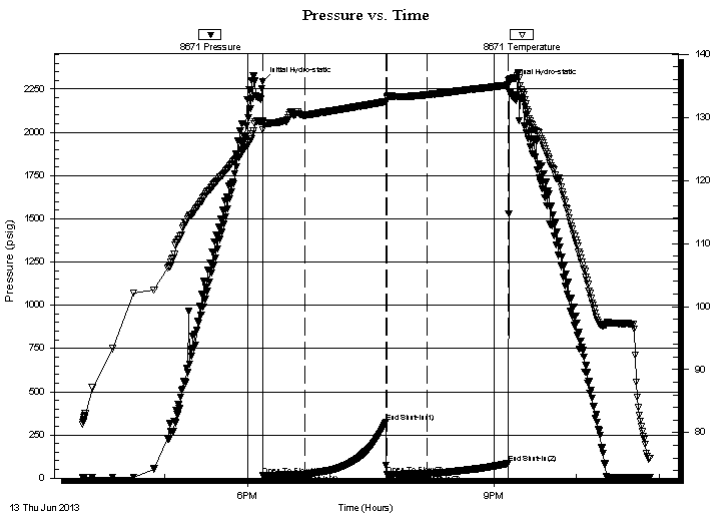
Serial #: 8671

Inside

Press @ Run Depth: 24.32 psig @ 4455.00 ft (KB) Capacity: 8000.00 psig
 Start Date: 2013.06.13 End Date: 2013.06.13 Last Calib.: 2013.06.13
 Start Time: 16:00:05 End Time: 22:53:14 Time On Btm: 2013.06.13 @ 18:11:15
 Time Off Btm: 2013.06.13 @ 21:10:45

TEST COMMENT: 30 - IF: Blow built to 1/8" then died back, dead at 15 min.
 60 - IS: No blow back
 30 - FF: No blow
 60 - FS: No blow back

PRESSURE SUMMARY



Time (Min.)	Pressure (psig)	Temp (deg F)	Annotation
0	2293.58	129.38	Initial Hydro-static
1	17.27	128.09	Open To Flow (1)
31	20.21	130.36	Shut-In(1)
90	321.79	132.50	End Shut-In(1)
91	19.67	133.15	Open To Flow (2)
120	24.32	133.58	Shut-In(2)
179	85.36	135.11	End Shut-In(2)
180	2284.42	136.02	Final Hydro-static

Recovery

Length (ft)	Description	Volume (bbl)
30.00	OCM 81% <i>m</i> , 16% <i>o</i> , 3% <i>g</i>	0.15
5.00	SMCO 83% <i>o</i> , 10% <i>m</i> , 7% <i>g</i>	0.02

* Recovery from multiple tests

Gas Rates

Choke (inches)	Pressure (psig)	Gas Rate (Mcf/d)



**TRILOBITE
TESTING, INC.**

DRILL STEM TEST REPORT

TOOL DIAGRAM

Murfin Drilling Co., Inc

11-1s-37w Cheyenne KS

250 N. Water STE 300
Wichita, KS 67202

Culwell 'B' #1-11

Job Ticket: 52625

DST#: 5

ATTN: Terry McLeod

Test Start: 2013.06.13 @ 16:00:00

Tool Information

Drill Pipe:	Length: 3931.00 ft	Diameter: 3.80 inches	Volume: 55.14 bbl	Tool Weight: 2500.00 lb
Heavy Wt. Pipe:	Length: 0.00 ft	Diameter: 0.00 inches	Volume: 0.00 bbl	Weight set on Packer: 25000.00 lb
Drill Collar:	Length: 533.00 ft	Diameter: 2.25 inches	Volume: 2.62 bbl	Weight to Pull Loose: 84000.00 lb
			<u>Total Volume: 57.76 bbl</u>	Tool Chased 0.00 ft
Drill Pipe Above KB:	33.00 ft			String Weight: Initial 74000.00 lb
Depth to Top Packer:	4454.00 ft			Final 74000.00 lb
Depth to Bottom Packer:	ft			
Interval between Packers:	46.00 ft			
Tool Length:	69.00 ft			
Number of Packers:	2	Diameter: 6.75 inches		

Tool Comments:

Tool Description	Length (ft)	Serial No.	Position	Depth (ft)	Accum. Lengths
------------------	-------------	------------	----------	------------	----------------

Shut In Tool	5.00			4436.00	
Hydraulic tool	5.00			4441.00	
Safety Joint	3.00			4444.00	
Packer	5.00			4449.00	23.00 Bottom Of Top Packer
Packer	5.00			4454.00	
Stubb	1.00			4455.00	
Recorder	0.00	8671	Inside	4455.00	
Recorder	0.00	8320	Outside	4455.00	
Perforations	5.00			4460.00	
Blank Spacing	33.00			4493.00	
Perforations	4.00			4497.00	
Bullnose	3.00			4500.00	46.00 Bottom Packers & Anchor

Total Tool Length: 69.00



**TRILOBITE
TESTING, INC.**

DRILL STEM TEST REPORT

FLUID SUMMARY

Murfin Drilling Co., Inc

11-1s-37w Cheyenne KS

250 N. Water STE 300
Wichita, KS 67202

Culwell 'B' #1-11

Job Ticket: 52625

DST#: 5

ATTN: Terry McLeod

Test Start: 2013.06.13 @ 16:00:00

Mud and Cushion Information

Mud Type: Gel Chem

Cushion Type:

Oil API:

deg API

Mud Weight: 9.00 lb/gal

Cushion Length:

ft

Water Salinity:

ppm

Viscosity: 75.00 sec/qt

Cushion Volume:

bbbl

Water Loss: 6.39 in³

Gas Cushion Type:

Resistivity: ohm.m

Gas Cushion Pressure:

psig

Salinity: 2600.00 ppm

Filter Cake: 2.00 inches

Recovery Information

Recovery Table

Length ft	Description	Volume bbl
30.00	OCM 81% <i>m</i> , 16% <i>o</i> , 3% <i>g</i>	0.148
5.00	SMCO 83% <i>o</i> , 10% <i>m</i> , 7% <i>g</i>	0.025

Total Length: 35.00 ft Total Volume: 0.173 bbl

Num Fluid Samples: 0

Num Gas Bombs: 0

Serial #:

Laboratory Name:

Laboratory Location:

Recovery Comments: not enough to get a gravity

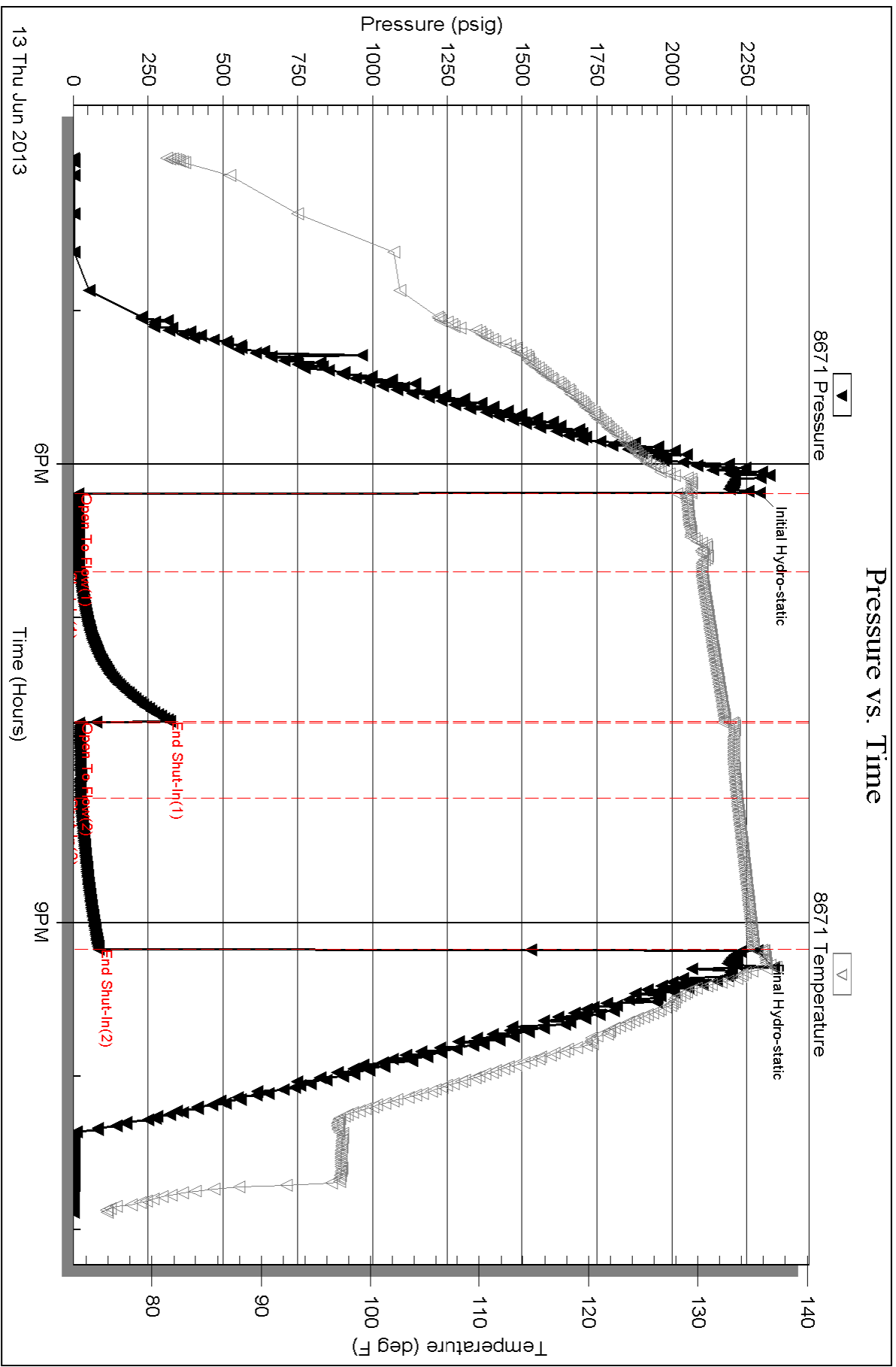
Serial #: 8671

Inside

Murfin Drilling Co., Inc

Oilwell 'B' #1-11

DST Test Number: 5

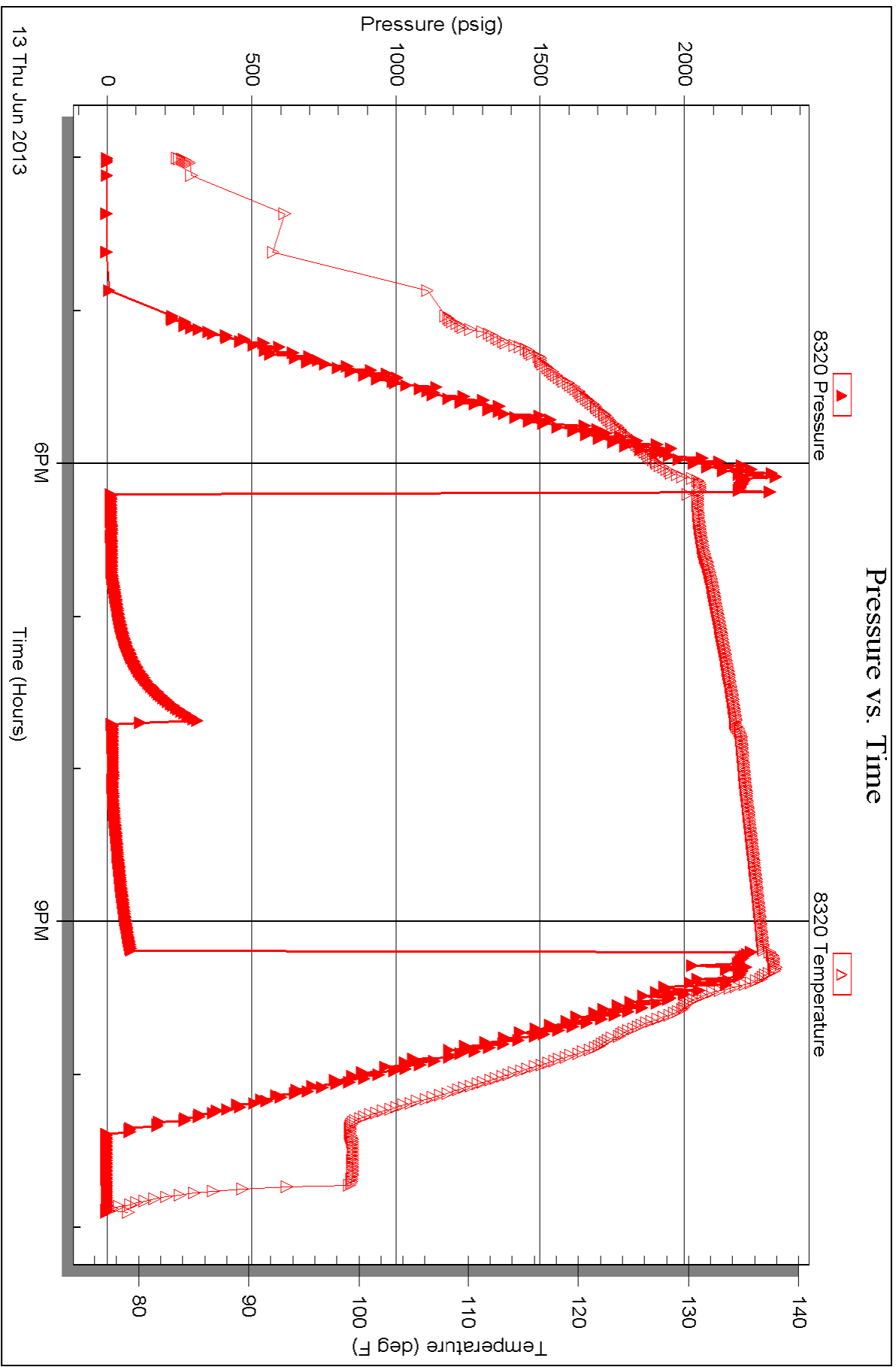


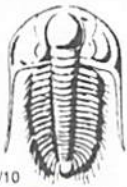
Serial #: 8320

Outside Murfin Drilling Co., Inc

Oilwell 'B' #1-11

DST Test Number: 5





TRILOBITE TESTING INC.

1515 Commerce Parkway • Hays, Kansas 67601

Test Ticket

NO. 52621

Well Name & No. Culwell 'B' #1-11 Test No. 1 Date 6-10-13
 Company Murfin Drilling Co. Inc Elevation 3150 KB 3140 GL
 Address 250 N. Water STE 300 Wichita, KS 67202
 Co. Rep / Geo. Terry McLeod Rig Murfin #14
 Location: Sec. 11 Twp. 1s Rge. 37w Co. Cheyenne State KS

Interval Tested 3958 - 4025 Zone Tested Oread
 Anchor Length 67 Drill Pipe Run 3425 Mud Wt. 9.3
 Top Packer Depth 3953 Drill Collars Run 533 Vis 65
 Bottom Packer Depth 3958 Wt. Pipe Run - WL 6.8
 Total Depth 4025 Chlorides 800 ppm System LCM 7

Blow Description IF: Blow built to 1/4" then died back dead at 21 min.
ISI: No blowback
FF: No blow
FSI: No blowback

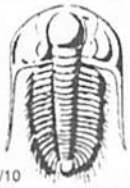
Rec	Feet of	%gas	%oil	%water	%mud
<u>2</u>	<u>Mud</u>			<u>100</u>	
Rec	Feet of	%gas	%oil	%water	%mud
Rec	Feet of	%gas	%oil	%water	%mud
Rec	Feet of	%gas	%oil	%water	%mud
Rec	Feet of	%gas	%oil	%water	%mud

Rec Total 2 BHT 128 Gravity - API RW - @ - °F Chlorides - ppm

(A) Initial Hydrostatic <u>2043</u>	<input type="checkbox"/> Test <u>★</u> 1250	T-On Location <u>2:15</u>
(B) First Initial Flow <u>17</u>	<input checked="" type="checkbox"/> Jars	T-Started <u>3:10</u>
(C) First Final Flow <u>20</u>	<input type="checkbox"/> Safety Joint <u>★</u> 75	T-Open <u>5:26</u>
(D) Initial Shut-In <u>314</u>	<input checked="" type="checkbox"/> Circ Sub <u>★ NA</u>	T-Pulled <u>8:37</u>
(E) Second Initial Flow <u>20</u>	<input checked="" type="checkbox"/> Hourly Standby	T-Out <u>10:15</u>
(F) Second Final Flow <u>23</u>	<input type="checkbox"/> Mileage <u>134RT</u> 207.70	Comments
(G) Final Shut-In <u>221</u>	<input checked="" type="checkbox"/> Sampler	
(H) Final Hydrostatic <u>1960</u>	<input checked="" type="checkbox"/> Straddle	<input checked="" type="checkbox"/> Ruined Shale Packer
Initial Open <u>30</u>	<input checked="" type="checkbox"/> Shale Packer	<input checked="" type="checkbox"/> Ruined Packer
Initial Shut-In <u>60</u>	<input checked="" type="checkbox"/> Extra Packer	<input checked="" type="checkbox"/> Extra Copies
Final Flow <u>38 40</u>	<input checked="" type="checkbox"/> Extra Recorder	Sub Total <u>0</u>
Final Shut-In <u>60</u>	<input checked="" type="checkbox"/> Day Standby	Total <u>1532.70</u>
	<input checked="" type="checkbox"/> Accessibility	MP/DST Disc't
	Sub Total <u>1532.70</u>	

Approved By Terry McLeod Our Representative James Winder

Trilobite Testing Inc. shall not be liable for damaged or any kind of the property or personnel of the one for whom a test is made, or for any loss suffered or sustained, directly or indirectly, through the use of its equipment, or its statements or opinion concerning the results of any test, tools lost or damaged in the hole shall be paid for at cost by the party for whom the test is made.



TRILOBITE TESTING INC.

1515 Commerce Parkway • Hays, Kansas 67601

Test Ticket

NO. 52622

Well Name & No. Culwell 'B' # 1-11 Test No. 2 Date 6-10-13
 Company Murfin Drilling Co. Inc. Elevation 3150 KB 3140 GL
 Address 250 N. Water STE 300 Wichita, KS 67202
 Co. Rep / Geo. Terry McLeod Rig Murfin #14
 Location: Sec. 11 Twp. 1s Rge. 37w Co. Cheyenne State KS

Interval Tested 4103 - 4160 Zone Tested LKC "D"
 Anchor Length 57 Drill Pipe Run 3581 Mud Wt. 9.1
 Top Packer Depth 4098 Drill Collars Run 533 Vis 56
 Bottom Packer Depth 4103 Wt. Pipe Run - WL 6.8
 Total Depth 4160 Chlorides 800 ppm System LCM 4

Blow Description IF: Blow built to BOB (11") in 9 min.
ISI: Blow^{back} built to BOB in 40 min.
FF: Blow built to BOB in 8 1/2 min.
FST: Blowback built to BOB in 41 min.

Rec	Feet of	%gas	%oil	%water	%mud
<u>441</u>	<u>60</u>	<u>26</u>	<u>72</u>	<u>-</u>	<u>2</u>
<u>286</u>	<u>60wcm</u>	<u>10</u>	<u>7</u>	<u>16</u>	<u>67</u>
<u>533</u>	<u>mcw w/oil spots</u>	<u>2</u>	<u>2</u>	<u>76</u>	<u>20</u>
Rec	Feet of <u>GIP=550'</u>	%gas	%oil	%water	%mud
Rec	Feet of	%gas	%oil	%water	%mud

Rec Total 1260 BHT 139 Gravity 23.2 API RW .275 @ 77.7 °F Chlorides 22,500 ppm

(A) Initial Hydrostatic 1973 Test ★ 1250 T-On Location 22:00 6/10
 (B) First Initial Flow 111 Jars ★ T-Started 22:18
 (C) First Final Flow 318 Safety Joint ★ 75 T-Open 00:37
 (D) Initial Shut-In 1292 Circ Sub ★ NA T-Pulled 5:00
 (E) Second Initial Flow 344 Hourly Standby T-Out 7:30 6/11
 (F) Second Final Flow 556 Mileage 134 207.70 Comments tool opened at bridge
 (G) Final Shut-In 1289 Sampler about 10' off bottom - Reset
 (H) Final Hydrostatic 1969 Straddle before open at bottom
 Shale Packer Ruined Shale Packer
 Shale Packer Ruined Packer
 Extra Packer Extra Copies

Initial Open 30 Sub Total 0
 Initial Shut-In 60 Total 1532.70
 Final Flow 75 MP/DST Disc't
 Final Shut-In 90 Sub Total 1532.70

Approved By Terry McLeod Our Representative James Winder

Trilobite Testing Inc. shall not be liable for damaged or any kind of the property or personnel of the one for whom a test is made, or for any loss suffered or sustained, directly or indirectly, through the use of its equipment, or its statements or opinion concerning the results of any test, tools lost or damaged in the hole shall be paid for at cost by the party for whom the test is made.



TRILOBITE TESTING INC.

1515 Commerce Parkway • Hays, Kansas 67601

Test Ticket

NO. 52623

Well Name & No. Culwell 'B' #1-11 Test No. 3 Date 6-11-13
 Company Murfin Drilling Co. Inc Elevation 3150 KB 3140 GL
 Address 250 N. Water STE 300 Wichita, KS 67202
 Co. Rep / Geo. Terry McLeod Rig Murfin #14
 Location: Sec. 11 Twp. 1s Rge. 37W Co. Cheyenne State KS

Interval Tested 4169 - 4220 Zone Tested LKC "5"
 Anchor Length 51 Drill Pipe Run 3646 Mud Wt. 9.0
 Top Packer Depth 4164 Drill Collars Run 533 Vis 54
 Bottom Packer Depth 4169 Wt. Pipe Run - WL 5.6
 Total Depth 4220 Chlorides 2600 ppm System LCM 6

Blow Description IF: Blow built to 3 3/4"
ISI: No blowback
FF: Blow built to 7 1/4"
FSI: No blowback

Rec	Feet of	%gas	%oil	%water	%mud
<u>45</u>	<u>CGO</u>	<u>10</u>	<u>84</u>	<u>-</u>	<u>6</u>
<u>30</u>	<u>MCO</u>	<u>2</u>	<u>76</u>	<u>-</u>	<u>22</u>
<u>60</u>	<u>GOM</u>	<u>13</u>	<u>36</u>	<u>-</u>	<u>51</u>
Rec	Feet of <u>GIP=45'</u>	%gas	%oil	%water	%mud
Rec	Feet of	%gas	%oil	%water	%mud

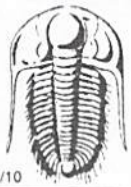
Rec Total 135 BHT 133 Gravity 29.2 API RW - @ - ° F Chlorides - ppm

(A) Initial Hydrostatic 2043 Test * 1250 T-On Location 16:00 4/1
 (B) First Initial Flow 17 Jars T-Started 16:25
 (C) First Final Flow 39 Safety Joint * 75 T-Open 18:37
 (D) Initial Shut-In 1323 Circ Sub *NA T-Pulled 22:36
 (E) Second Initial Flow 42 Hourly Standby T-Out 00:25 4/2
 (F) Second Final Flow 70 Mileage 134 RT 207.70 Comments
 (G) Final Shut-In 1321 Sampler
 (H) Final Hydrostatic 1982 Straddle Ruined Shale Packer
 Shale Packer Ruined Packer

Initial Open 30 Extra Packer Extra Copies
 Initial Shut-In 60 Extra Recorder Sub Total 0
 Final Flow 60 Day Standby Total 1532.70
 Final Shut-In 90 Accessibility MP/DST Disc't
 Sub Total 1532.70

Approved By Jay L. McLeod Our Representative James Winder

Trilobite Testing Inc. shall not be liable for damaged of any kind of the property or personnel of the one for whom a test is made, or for any loss suffered or sustained, directly or indirectly, through the use of its equipment, or its statements or opinion concerning the results of any test, tools lost or damaged in the hole shall be paid for at cost by the party for whom the test is made.



TRILOBITE TESTING INC.

1515 Commerce Parkway • Hays, Kansas 67601

Test Ticket

NO. 52624

Well Name & No. 2220 Culwell 'B' #1-11 Test No. 4 Date 6-12-13
 Company Murfin Drilling Co. Inc Elevation 3150 KB 3140 GL
 Address 250 N. Water STE 300 Wichita, KS 67202
 Co. Rep / Geo. Terry McLeod Rig Murfin #14
 Location: Sec. 11 Twp. 1s Rge. 37W Co. Cheyenne State KS

Interval Tested 4213 - 4320 Zone Tested LKC "H-J"
 Anchor Length 107 Drill Pipe Run 3677 Mud Wt. 9.0
 Top Packer Depth 4208 Drill Collars Run 533 Vis 71
 Bottom Packer Depth 4213 Wt. Pipe Run - WL 6.0
 Total Depth 4320 Chlorides 2600 ppm System LCM 6

Blow Description IF: '18" Blow at open, dead in 9 min.
ISI: No blowback
FF: No blow
FSI: No blowback

Rec	Feet of	%gas	%oil	%water	%mud
<u>10</u>	<u>Mud w/trace of oil</u>	<u>-</u>	<u>trace</u>	<u>-</u>	<u>100</u>
Rec	Feet of	%gas	%oil	%water	%mud
Rec	Feet of	%gas	%oil	%water	%mud
Rec	Feet of	%gas	%oil	%water	%mud
Rec	Feet of	%gas	%oil	%water	%mud

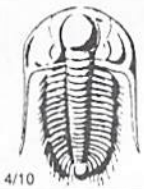
Rec Total 10 BHT 129 Gravity - API RW - @ - ° F Chlorides - ppm

(A) Initial Hydrostatic 2115 Test * 1250 T-On Location 14:05
 (B) First Initial Flow 20 Jars T-Started 14:54
 (C) First Final Flow 23 Safety Joint * 75 T-Open 17:41
 (D) Initial Shut-In 409 Circ Sub *NA T-Pulled 20:40
 (E) Second Initial Flow 23 Hourly Standby T-Out 22:20
 (F) Second Final Flow 25 Mileage 134RT 207.70 Comments _____
 (G) Final Shut-In 222 Sampler _____
 (H) Final Hydrostatic 2087 Straddle _____
 Shale Packer _____ Ruined Shale Packer _____
 Extra Packer _____ Ruined Packer _____

Initial Open 30 Extra Recorder _____ Sub Total 0
 Initial Shut-In 60 Day Standby _____ Total 1532.70
 Final Flow 30 Accessibility _____ MP/DST Disc't _____
 Final Shut-In 60 Sub Total 1532.70

Approved By _____ Our Representative James Winder

Trilobite Testing Inc. shall not be liable for damaged of any kind of the property or personnel of the one for whom a test is made, or for any loss suffered or sustained, directly or indirectly, through the use of its equipment, or its statements or opinion concerning the results of any test, tools lost or damaged in the hole shall be paid for at cost by the party for whom the test is made.



TRILOBITE TESTING INC.

1515 Commerce Parkway • Hays, Kansas 67601

Test Ticket

NO. 52625

Well Name & No. Culwell 'B' #1-11 Test No. 5 Date 6-13-13
 Company Murfin Drilling Co. Inc. Elevation 3150 KB 3140 GL
 Address 250 N. Water STE 300 Wichita, KS 67202
 Co. Rep / Geo. Terry McLeod Rig Murfin #14
 Location: Sec. 11 Twp. 1s Rge. 37w Co. cheyenne State KS

Interval Tested 4454 - 4500 Zone Tested Pawnee
 Anchor Length 46 Drill Pipe Run 3931 Mud Wt. 9.2
 Top Packer Depth 4449 Drill Collars Run 533 Vis 75
 Bottom Packer Depth 4454 Wt. Pipe Run - WL 6.4
 Total Depth 4500 Chlorides 2600 ppm System LCM 5
 Blow Description IF: Blow built to 1/8" then died back dead at 15 min.
ISI: No blowback
FF: No blow
FSI: No blowback

Rec	Feet of	%gas	%oil	%water	%mud
<u>5</u>	<u>SMCO</u>	<u>7</u>	<u>83</u>	<u>-</u>	<u>10</u>
<u>30</u>	<u>OCM</u>	<u>3</u>	<u>16</u>	<u>-</u>	<u>81</u>
Rec	Feet of	%gas	%oil	%water	%mud
Rec	Feet of	%gas	%oil	%water	%mud
Rec	Feet of	%gas	%oil	%water	%mud

Rec Total 35 BHT 135 Gravity - API RW - @ - °F Chlorides - ppm

(A) Initial Hydrostatic <u>2294</u>	<input type="checkbox"/> Test <u>*</u> 1250	T-On Location <u>15:30</u>
(B) First Initial Flow <u>17</u>	<input checked="" type="checkbox"/> Jars	T-Started <u>16:00</u>
(C) First Final Flow <u>20</u>	<input type="checkbox"/> Safety Joint <u>*</u> 75	T-Open <u>18:11</u>
(D) Initial Shut-In <u>322</u>	<input checked="" type="checkbox"/> Circ Sub <u>*NA</u>	T-Pulled <u>21:10</u>
(E) Second Initial Flow <u>20</u>	<input checked="" type="checkbox"/> Hourly Standby	T-Out <u>22:45</u>
(F) Second Final Flow <u>24</u>	<input type="checkbox"/> Mileage <u>134 RT x 2</u> 415.40	Comments <u>tools loaded at</u>
(G) Final Shut-In <u>85</u>	<input checked="" type="checkbox"/> Sampler	<u>23:00 6/14</u>
(H) Final Hydrostatic <u>2284</u>	<input checked="" type="checkbox"/> Straddle	<input checked="" type="checkbox"/> Ruined Shale Packer
Initial Open <u>30</u>	<input checked="" type="checkbox"/> Shale Packer	<input checked="" type="checkbox"/> Ruined Packer
Initial Shut-In <u>60</u>	<input checked="" type="checkbox"/> Extra Packer	<input checked="" type="checkbox"/> Extra Copies
Final Flow <u>30</u>	<input checked="" type="checkbox"/> Extra Recorder	Sub Total <u>0</u>
Final Shut-In <u>60</u>	<input checked="" type="checkbox"/> Day Standby	Total <u>1740.40</u>
	<input checked="" type="checkbox"/> Accessibility	MP/DST Disc't
	Sub Total <u>1740.40</u>	

Approved By _____ Our Representative James Winder

Trilobite Testing Inc. shall not be liable for damaged of any kind of the property or personnel of the one for whom a test is made, or for any loss suffered or sustained, directly or indirectly, through the use of its equipment, or its statements or opinion concerning the results of any test, tools lost or damaged in the hole shall be paid for at cost by the party for whom the test is made.