



Woolsey Operating Company, LLC

Scale 1:240 (5"=100') Imperial

Measured Depth Log

Well Name: STEWART TRUST B-2
Location: APPROX S2 SW SW NW
License Number: API: 15-007-24026-00-00
Spud Date: June 7, 2013
Surface Coordinates: Section 21-T33S-R10W, 2480' FNL, 330' FWL
Traffas
Bottom Hole Vertical Hole
Coordinates:
Ground Elevation (ft): 1489
Logged Interval (ft): 4000 To: RTD
Formation: McLish Shale
Type of Drilling Fluid: Chemical Mud, Displace at 3377'.
K.B. Elevation (ft): 1501
Total Depth (ft): 5087'
Region: Barber County, Kansas
Drilling Completed: June 14, 2013
Printed by WellSight Log Viewer from WellSight Systems 1-800-447-1534 www.WellSight.com

OPERATOR

Company: Woolsey Operating Company, LLC
Address: 125 N. Market, Suite 1000
Wichita, KS 67202

GEOLOGIST

Name: W. Scott Alberg
Company: Alberg Petroleum, LLC
Address: 609 Meadowlark Lane
Pratt, Kansas 67124

FORMATION TOPS

	SAMPLE TOPS	LOG TOPS
STARK SHALE	4292(-2791)	4292(-2791)
HUSHPUCKNEY SHALE	4327(-2826)	4325(-2824)
B/KC	4382(-2881)	4382(-2881)
PAWNEE	4470(-2969)	4470(-2969)
MISSISSIPPIAN	4547(-3046)	4547(-3046)
KINDERHOOK SHALE	4783(-3282)	4782(-3281)
WOODFORD SHALE	4850(-3349)	4850(-3349)
VIOLA	4895(-3394)	4893(-3392)
SIMPSON GROUP	4980(-3479)	4982(-3481)
SIMPSON SAND	5008(-3507)	5010(-3509)
MCLISH SHALE	5045(-3544)	5046(-3545)
RTD	5087(-3586)	
LTD		5090(-3589)

COMMENTS

Surface Casing: Set 5 joints 10 3/4" at 221' with 220 sxs Class A, 2% gel, 3% cc, 1/4# Celoflake, plug down at 9:45 pm on June 7, 2013. Cement did Circulate.

Production Casing: Ran 5 1/2" Casing.

Deviation Surveys: 1 - 220', 3/4 - 778', 3/4 - 1287', 3/4 - 1792', 3/4 - 2235', 1 - 2837', 3/4 - 3282', 1 - 3757', 1/4 - 4261', 1/2 - 4580', 2 - 5087'.

Contractor Bit Record:

1- 14 3/4" out at 221'.

2- 7 7/8" out at 4580'.

3- 7 7/8" out at 5087'.

Pipe Strap at 4580' Strap 4582.19'
Board 4580.93'

Long 1.26'

Gas Detector: Woolsey Operating Company, Trailer #1

Mud System: Mud Co, Brad Bortz, Terry Ison, Engineers

DSTs: Trilobite Testing, Leal Cason

Logged by Nabors Completion and Production Services

LTD - 5090'.

DSTs

DST #1 4490 to 4580 Mississippian

Time 30-60-60-120

1st Opening - Strong Blow, BOB 2 minutes, no blow back.

2nd Opening - Strong Blow - BOB 30 seconds, no blow back.

Recovery: 2600' GIP, 135' GCM (5% G, 95% M)

IFP 104-115# FFP 114-114#

ISIP 1004# FSIP 956#

IHP 2271# FHP 2255#

Temp 122

Note: Tool slid 15' to bottom, but did not open until on bottom. Valid test.

CREWS

Fossil Drilling, Inc Rig #3

Tool Pusher - Jim Wenrich

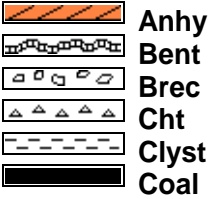
Drillers - Days - Daniel Orranta

Evening - Ed Raney

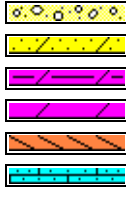
Morning - Andres Maestas

Relief - Allen Collins

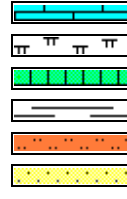
ROCK TYPES



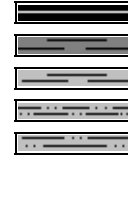
Anhy
Bent
Brec
Cht
Cyst
Coal



Congl
Sdy dolo
Shy dolo
Dol
Gyp
Sdy lmst



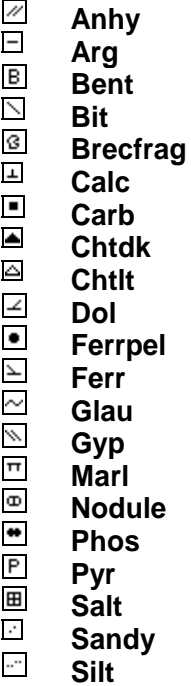
Lmst
Mrlst
Salt
Shale
Sltst
Ss



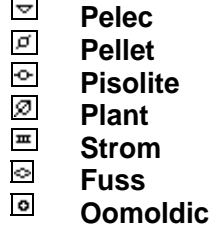
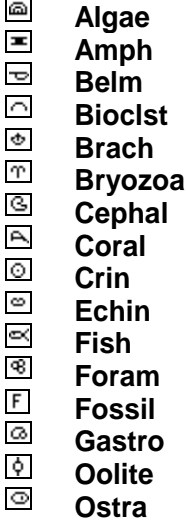
Black sh
Gry sh
Shale
Shyslst
Sltsh

ACCESSORIES

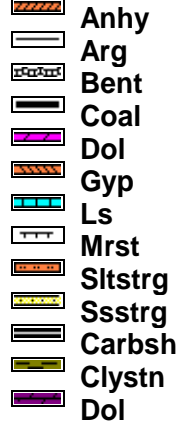
MINERAL



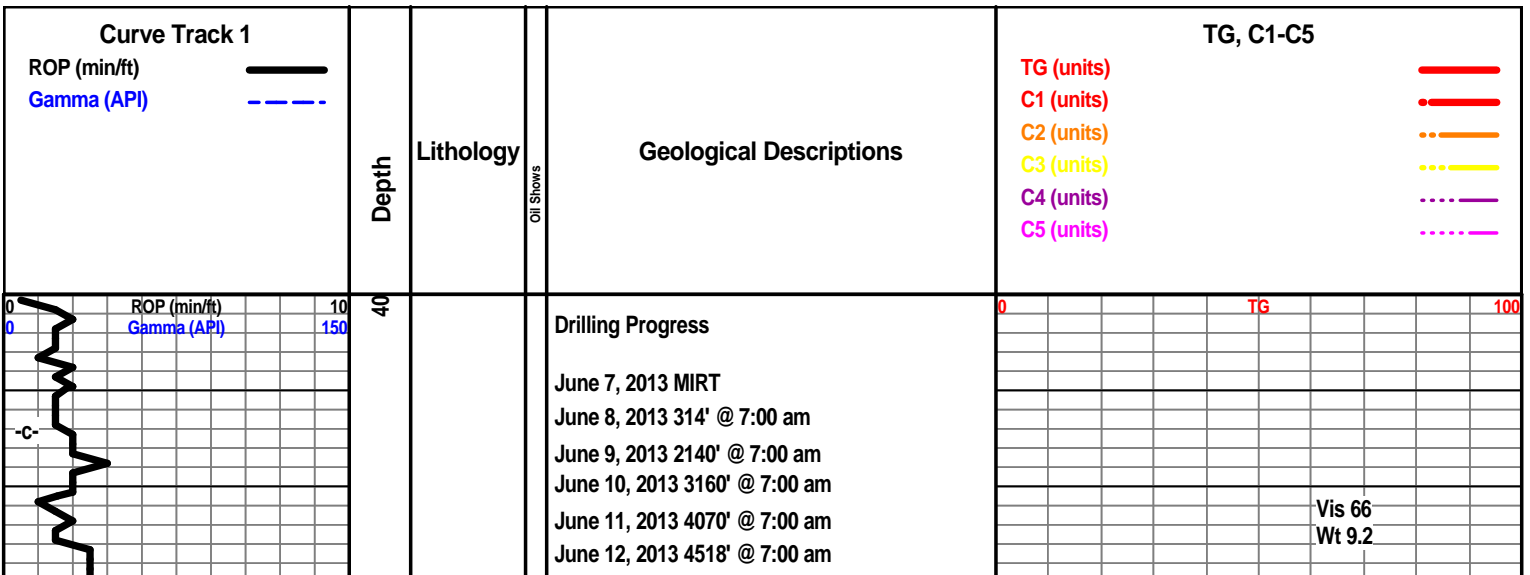
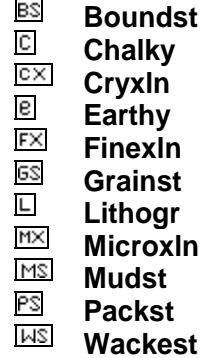
FOSSIL



STRINGER

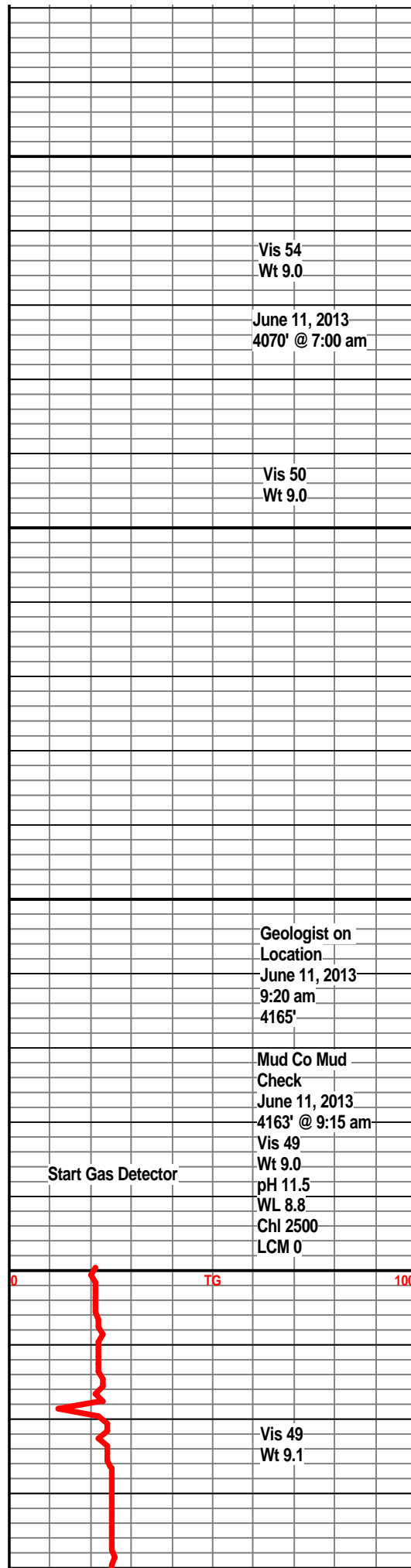
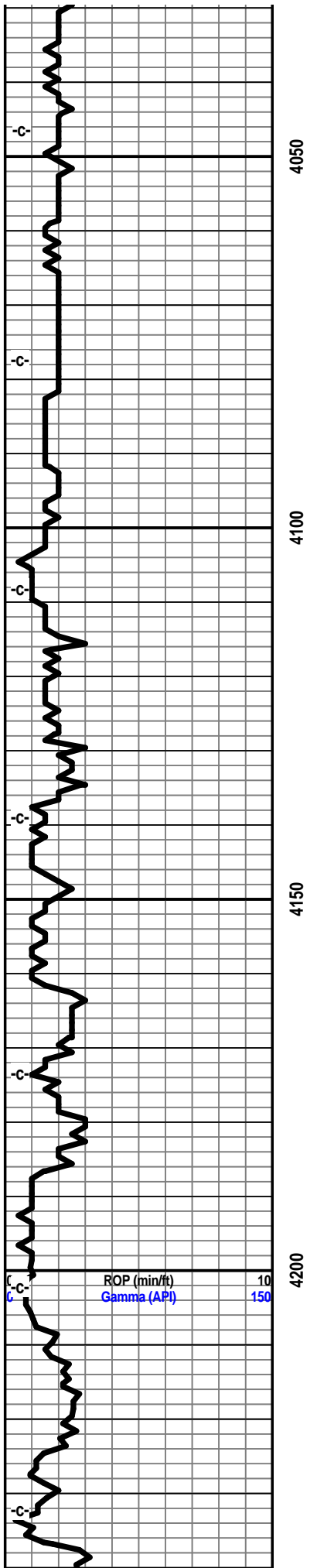


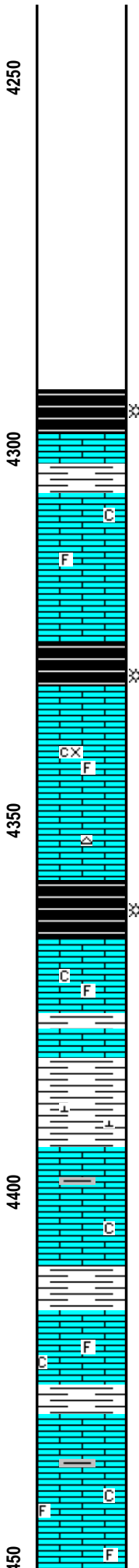
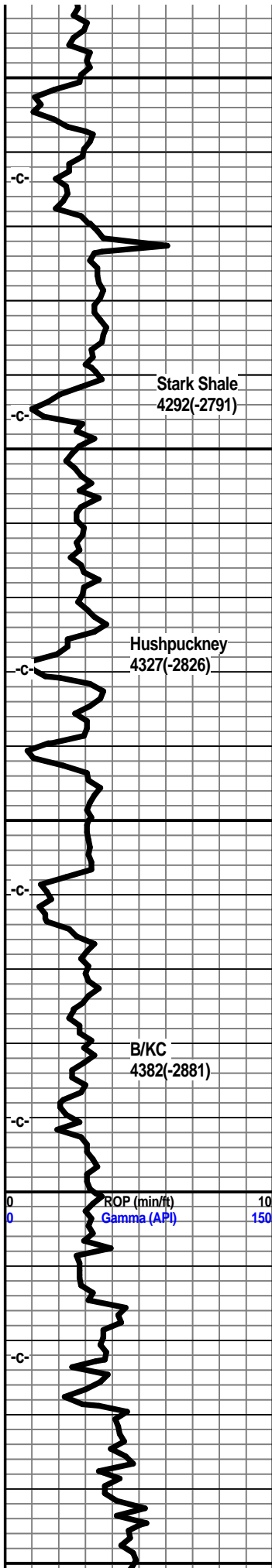
TEXTURE



June 13, 2013 4676' @ 7:00 am

June 14, 2013 5024' @ 7:00 am





Shale, grey-black, trace gas bubbles.

Limestone, cream-white, crystalline, subchalky, trace fossils, poor porosity, no visible shows, no odor.

Shale, grey-black, carb, gas bubbles.

Limestone, tan-white, buff, crystalline, trace fossils, trace crystalline porosity, no visible shows, no odor, gas kick??

Shale, grey, grey-black, gas bubbles.

Limestone, cream, tan, grey-white, crystalline, subchalky, trace fossils, no visible shows, no odor.

Shale, light grey, pale green, calcitic in part.

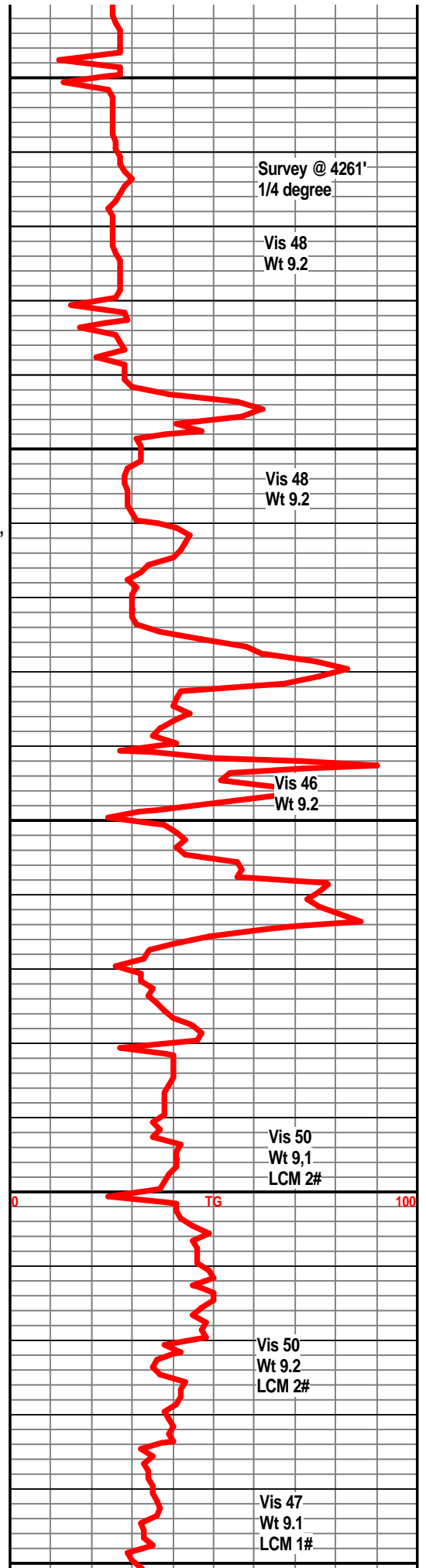
Limestone, cream, buff-white, pale green, crystalline, subchalky in part, slightly shaley on top.

Shale, light grey, pale green.

Limestone, cream, buff-white, crystalline, trace fossils, chalky in part.

Shale, light grey.

Limestone, cream, tan-white, crystalline, trace fossils, trace grey shale, slightly chalky.



Survey @ 4261' 1/4 degree

Vis 48 Wt 9.2

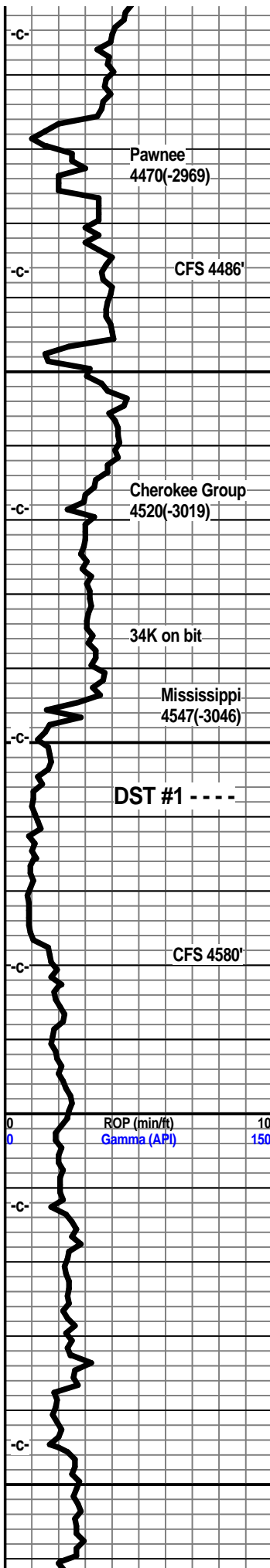
Vis 48 Wt 9.2

Vis 46 Wt 9.2

Vis 50 Wt 9.1 LCM 2#

Vis 50 Wt 9.2 LCM 2#

Vis 47 Wt 9.1 LCM 1#



Limestone, tan, tan-white, crystalline, dense, trace tan chert, trace fossils.

Shale, grey-black.

Limestone, cream, tan, crystalline, mirco oolites, trace fossiliferous porosity, slightly chalky, no visible shows, no odor, fair gas indication, dull spotty fluorescence.

Shale, grey-black.

Limestone, buff, tan, crystalline, trace fossils, subchalky in part.

Shale, grey, dark grey.

Limestone, tan, cream-tan, crystalline, dense, trace fossils, slightly chalky, trace grey shales, no visible shows.

Shale, grey.

Chert, tan, off-white, slightly limey on top, scattered weathered cherts with pin point porosity, fresh sharp cherts with some weathered edges, spotty golden brown staining, light odor, trace amount free oil in tray, spotty fluor.

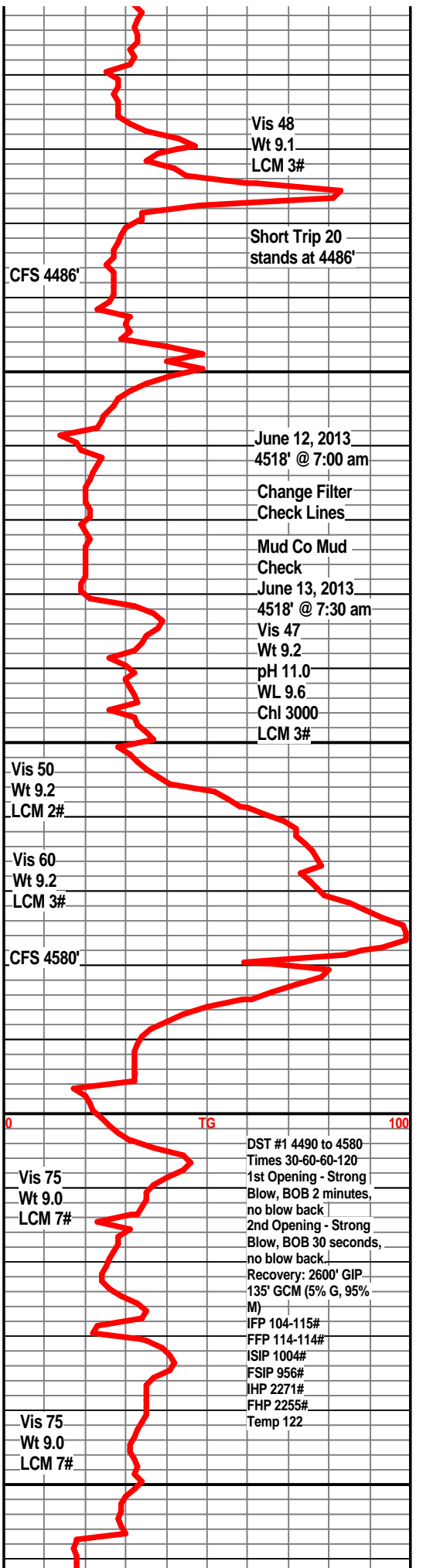
Chert, off-white, bone-white, tan, weathered, fair pin point porosity on weathered pieces, increase in fresh cherts with fair edge staining and weathering, fair to good show free oil in tray, spotty dull fluor, scattered golden staining.

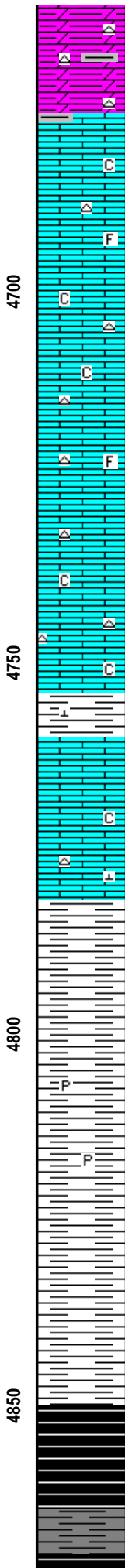
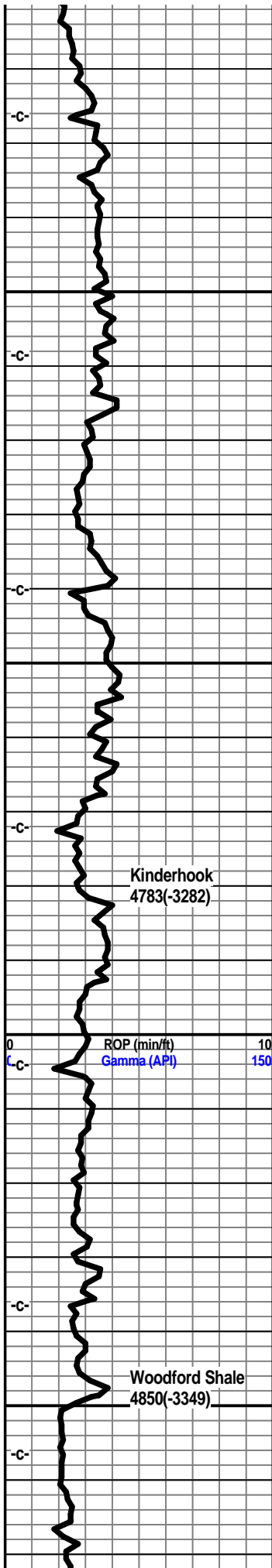
Dolo, tan, grey-white, fine grained, limestone fragments, abundant cherts, weathered to fresh, scattered staining, grey-green splintery shales.

Dolo, tan, grey-white, abundant weathered and fresh cherts, scattered stain, very shaley, traces pyrite.

Dolo, grey-white, ls frags, cherts, weathered and fresh, scattered staining.

Dolo, grey, tan, weathered and fresh cherts, some light scattered staining, no visible shows, ls frags, grey-green shales.





Dolo, tan, grey, weathered, some fresh, scattered light staining, ls frags, grey green shales, no odor, no visible shows.

Limestone, cream, tan, reddish brown, crystalline, trace fossils, fresh sharp chert, green shale, chalky.

Limestone, tan, buff-white, reddish brown, crystalline, trace fossils, chalky, pale green shales, sharp fresh chert.

Limestone, tan, buff-white, crystalline dense, subchalky, traces of chert, glauc, trace fossils.

Limestone, buff-white, tan, crystalline, trace fossils, chalky, dense.

Shale, grey, pale green, calcitic.

Limestone, cream, tan, buff, crystalline, dense subchalky, glauc, trace fossils, fresh chert.

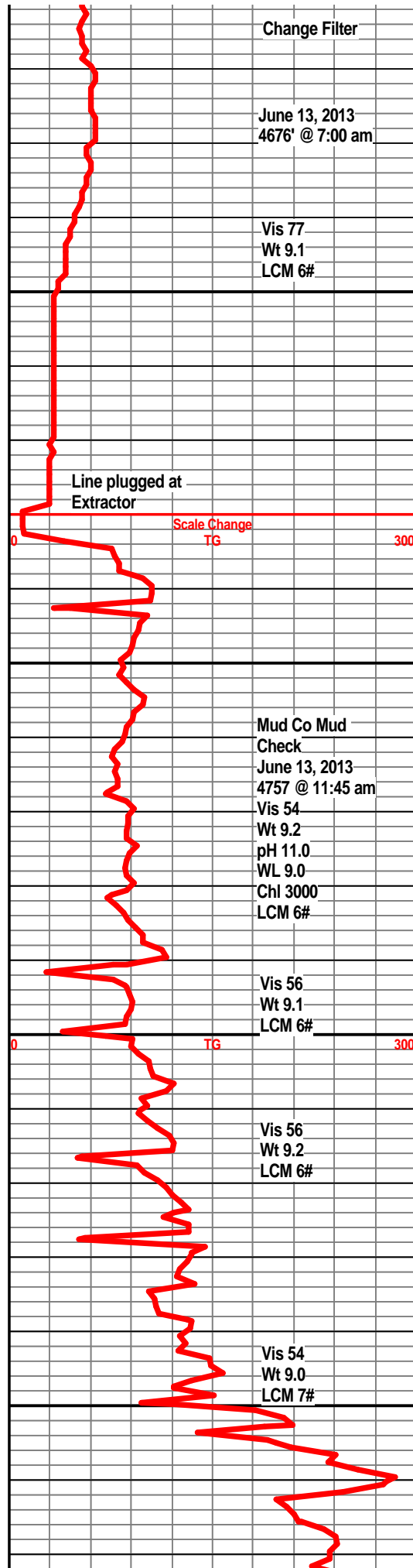
Shale, light grey, grey, silty, traces of pyrite. ls frags.

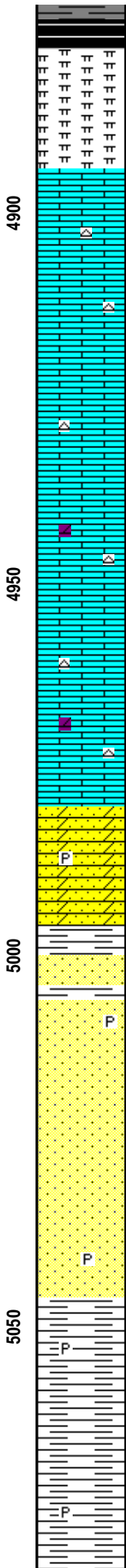
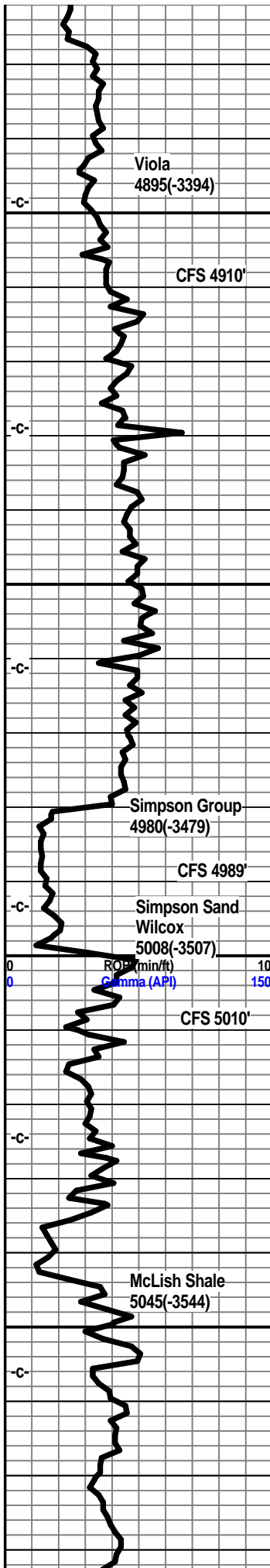
Shale, grey dark grey, silty, firm.

Shale, dark grey, silty, trace pyrite.

Shale, grey-black, carb, gas bubbles, traces pyrite.

Shale, grey-black, carb, trace gas





bubbles.

Dolo grey-white, fine grained, soft, chalky, traces ls frags, no visible shows.

Limestone, cream-white, crystalline, crystalline porosity, light show of oil under uv light, very faint odor, traces of off-white chert.

Limestone, grey-white, crystalline, dense, traces of pyrite inclusions, tan-white chert, no visible shows, no odor.

Limestone, tan, cream-white, crystalline, dense, tan chert, sharp.

Limestone, tan, granular, dense, sharp tan-brown chert.

Limestone, tan, granular, sharp tan brown chert, dolo in part.

Dolomitic sandstone, grey-white, sa, poor sorting, well cemented, tite, glauc, traces pyrite, no visible shows, no odor, some spotty dull fluorescence.

Shale, dark green, teal green, firm.

Sandstone, clear to grey-white, sa to sr, frosted qtz grains, coarse grained, friable in part, most well cemented, gil, trace show scummy oil, no odor, no kick, no fluorescence, pyrite inclusions.

Sandstone, clear to white frosted qtz grains, fine grained, sa to sr, fair sorting, well cemented in part, trace friable, pyrite, glauc, no odor, no fluorescence, shale stringers, dolo in part.

Shale, dark green, teal, firm, traces pyrite, few sand stringers.

Shale, dark green, teal green, firm, traces of

