

API # 15-135-256449-00-00

GEOLOGICAL REPORT

PREPARED BY GRACE ENERGY SERVICES

COMPANY: ABERCROMBIE ENERGY

LEASE: MEYER #1

FIELD: NE NE NE

LOCATION: NE NE NE

SEC 23 TWP 19S RGE 28W

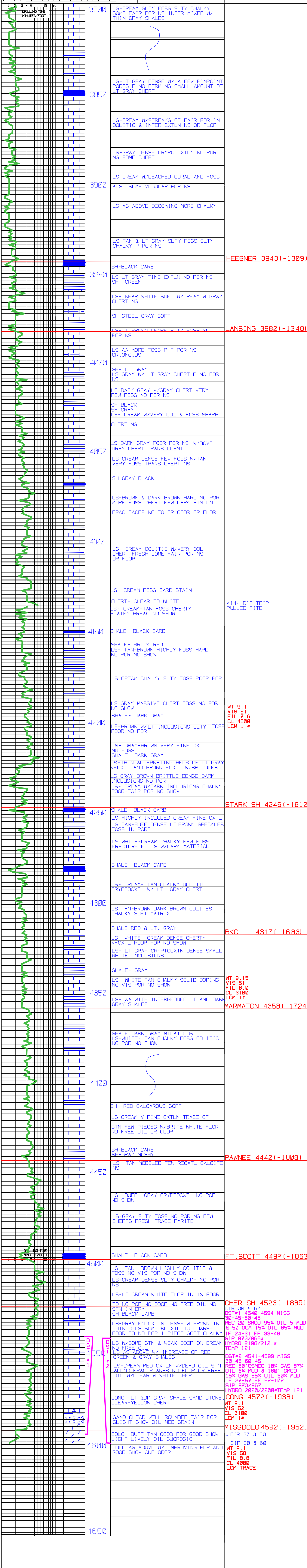
COUNTY: NESS STATE: KANSAS

CONTRACTOR: VAL RIG #7

SPUD: 2/20/2013 COMP: 08/27/2013

SAMPLES SAVED FROM 3820 TO TD

FORMATION	THICKNESS	E. LOG	DATE	A	B	C	D
HEBNER SH	3943	3941	1-1982				
MARMATON SH	4358	4355	1-1915				
STARK SH	4246	4245	1-1915				
PAWNEE SH	4442	4437	1-1915				
FT. SCOTT SH	4497	4495	1-1915				
CHERRYBLOSSOM SH	4523	4521	1-1915				
CONG. SH	4572	4569	1-1915				
MISSOURI SH	4592	4589	1-1915				



HEBNER 3943(-1309)

LANSING 3982(-1348)

STARK SH 4246(-1612)

BKC 4317(-1683)

MARMATON 4358(-1724)

PAWNEE 4442(-1808)

FT. SCOTT 4497(-1863)

CHERRY SH 4523(-1889)

CONG 4572(-1938)

MISSOURI 4592(-1952)

WT 9.1, VIS 8.8, FIL 8.8, CL 3100, LCM 1\*

WT 9.1, VIS 8.8, FIL 8.8, CL 3100, LCM 1\*

WT 9.1, VIS 8.8, FIL 8.8, CL 3100, LCM 1\*

WT 9.1, VIS 8.8, FIL 8.8, CL 3100, LCM 1\*

WT 9.1, VIS 8.8, FIL 8.8, CL 3100, LCM 1\*

WT 9.1, VIS 8.8, FIL 8.8, CL 3100, LCM 1\*