

# PROPOSED

REVISION:	LOCATION:
09/03/2013	23-T32S-R06E COWLEY COUNTY, KANSAS

WELL No:	1	REV.
----------	---	------

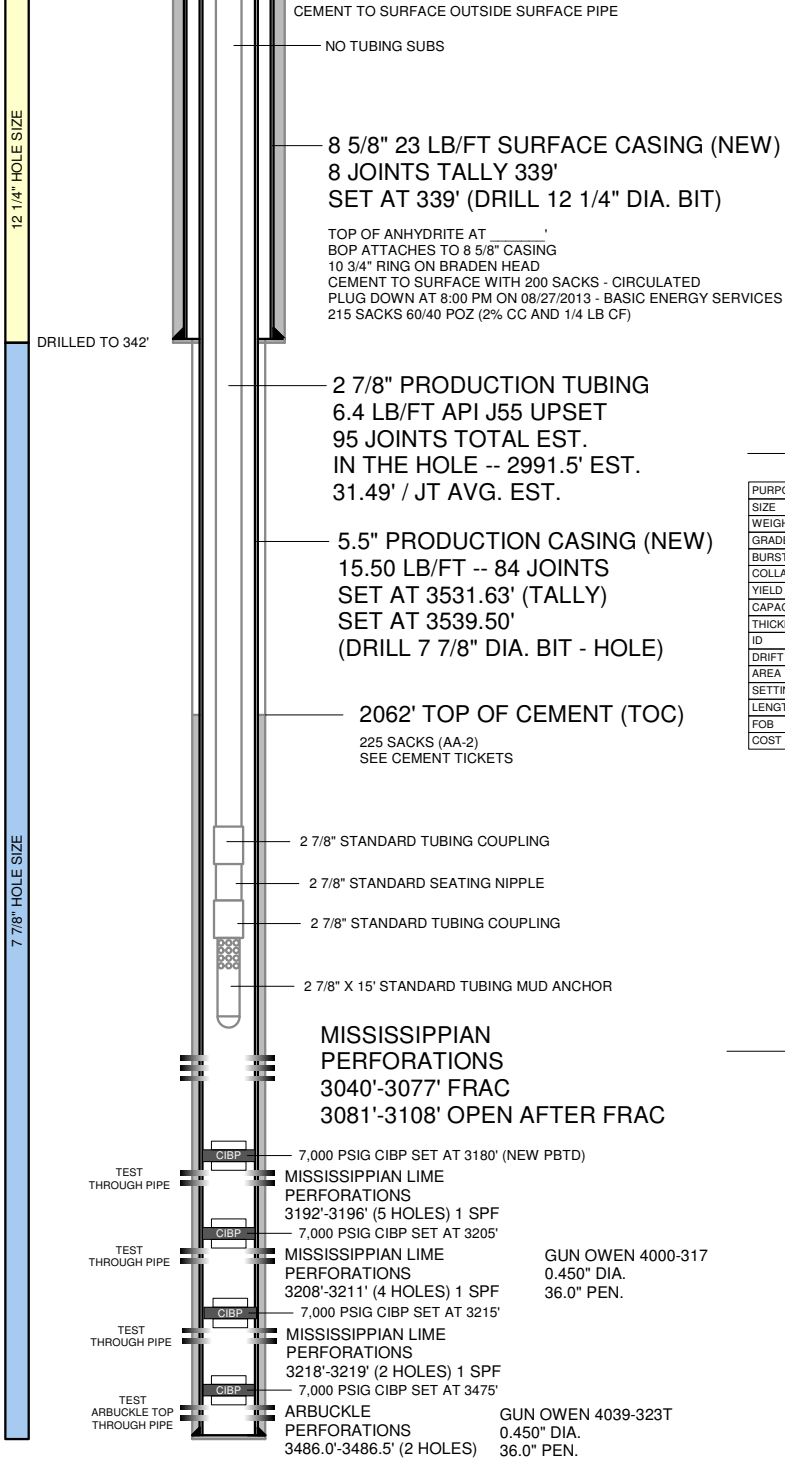
SURFACE TEMP: 80 DEG F

K.B.: 8'

5 1/2" X 2 7/8" TUBING HEAD

G.L. ELEVATION 1354' (SHL)

SET TOP CLPG 12" AGL



**NOTES:**

PUMPING UNIT: C - 228 - 246 - 86 (86" SURFACE STROKE)  
 CONVENTIONAL PARKERSBURG UNIT  
 50HP ELECTRIC MOTOR WITH 50 HP SPOCC VFD  
 VFD INSTALLED  
 RUN TIME: 24 HRS PER DAY  
 1.25" X 18" POLISHED ROD WITH LINER ASSEMBLY  
 2', 4', 4" AND 8' PONY RODS ON TOP EST. (7/8" GRADE D)  
 1.50" X 10' HARD LINED POLISHED ROD LINER WITH SEAL  
 47 - 7/8" GRADE D SUCKER RODS ON TOP EST.  
 71 - 3/4" GRADE D SUCKER RODS ON BOTTOM EST.  
 3 - 1.50" X 25" SINKER BAR ON TOP OF PUMP  
 ONE 4' X 7/8" GRADE D PONY ROD ON BOTTOM (TOP OF PUMP)  
 SPEED RANGE: 4 TO 15 SPM  
 MAX. SPEED: 15 SPM  
 MAX. DISPLACEMENT: 500 BPD (2.00" BORE PUMP)  
 MAX. DISPLACEMENT: 900 BPD (2.75" BORE PUMP W/TUBING ANCHOR)

**TUBULARS**

PURPOSE SIZE	CONDUCTOR 13 3/8"	SURFACE 8 5/8"	INTERMEDIATE	PRODUCTION 5 1/2"	PROD. TUBING 2 7/8"
WEIGHT	NONE	2,946 PSIG	NONE	15.5 LB/FT	6.40 LB/FT
GRADE	NONE	J-55	NONE	J-55	J-55
BURST	NONE	24.0 LB/FT	NONE	4,812 PSIG	7,265 PSIG
COLLAPSE	NONE	381,395 LBF	NONE	4,043 PSIG	7,676 PSIG
YIELD	NONE	1,434 PSIG	NONE	248,274 LBF	99,661 LBF
CAPACITY	NONE	0.064 BBL/S/FT	NONE	0.024 BBL/S/FT	0.006 BBL/S/FT
THICKNESS	NONE	0.2640"	NONE	0.2750"	0.2170"
ID	NONE	8.0970"	NONE	4.9500"	2.4410"
DRIFT ID	NONE	7.9720"	NONE	4.8250"	2.3470"
AREA	NONE	51.49 IN2	NONE	19.42 IN2	4.68 IN2
SETTING DEPTH	NONE	339'	NONE	3,532'	3,000' TO PUMP
LENGTH	NONE	339'	NONE	3,532'	NEED 3,525'
FOB	NONE	CHASE, KS	NONE	CHASE, KS	CHASE, KS
COST	NONE	\$ / FT	NONE	\$ / FT	\$ / FT

DATE	07/29/2013
APPROVED BY	B. KELSO
AFE	TBD
API No.	15035245130000
GL ELEVATION	1354'
KB	8'
KB ELEVATION	1362'
RIG	FOSSIL #2

**MISSISSIPPIAN PERFORATIONS:**

**SINGLE STAGE FRAC (22 HOLES TOTAL)**

MISSISSIPPIAN CHERT/CHAT  
 3040'-3046' (2 SPF)  
 HEIGHT (FT): 6  
 TOTAL HOLES: 13

AND

MISSISSIPPIAN LIME  
 3063'-3077' (1 SPF)  
 HEIGHT (FT): 14  
 TOTAL HOLES: 9  
 3063, 3064, 3066, 3067, 3068,  
 3069, 3073, 3076 & 3077

**AFTER FRAC (24 HOLES)**

3081, 3082, 3083, 3084,  
 3085, 3086, 3087, 3088, 3089,  
 3098, 3099, 3100, 3101, 3102,  
 3103, 3104, 3105, 3106, 3107,  
 3108

\*(2 SPF ON 3081, 3087, 3103 & 3108)

**DOWN HOLE SUCKER ROD PUMP:**

2.00" INSERT PUMP  
 PUMP LENGTH: 16' (NICARD AND SS)  
 BOTTOM HOLD DOWN TYPE  
 TRAVELING BARREL  
 2" X 7/8" PONY ROD ON TOP OF PUMP  
 8" GAS SEPERATOR ON THE BOTTOM  
 PUMP INTAKE DEPTH: 3000' EST.  
 PUMP IS SETTING 77' ABOVE PERFS. EST.  
 LOWER PUMP INTO RAT HOLE AFTER 2 MONTHS

PBTD: 3500' MD TVD

RTD: 3541' MD TVD

LTd: 3541' MD TVD

DOWNHOLE TEMP: 120 DEG F

**BAIR #1**

COWLEY COUNTY, KANSAS

23-T32S-R06E

SHL: 660 FSL, 660 FWL

BHL: 660 FSL, 660 FWL

LORTON FIELD

