



TEMPORARY ABANDONMENT WELL APPLICATION

All blanks must be complete

OPERATOR: License# \_\_\_\_\_  
Name: \_\_\_\_\_  
Address 1: \_\_\_\_\_  
Address 2: \_\_\_\_\_  
City: \_\_\_\_\_ State: \_\_\_\_\_ Zip: \_\_\_\_\_ + \_\_\_\_\_  
Contact Person: \_\_\_\_\_  
Phone: ( \_\_\_\_\_ ) \_\_\_\_\_  
Contact Person Email: \_\_\_\_\_  
Field Contact Person: \_\_\_\_\_  
Field Contact Person Phone: ( \_\_\_\_\_ ) \_\_\_\_\_

API No. 15- \_\_\_\_\_  
Spot Description: \_\_\_\_\_  
\_\_\_\_ - \_\_\_\_ - \_\_\_\_ - \_\_\_\_ Sec. \_\_\_\_\_ Twp. \_\_\_\_\_ S. R. \_\_\_\_\_  E  W  
\_\_\_\_\_ feet from  N /  S Line of Section  
\_\_\_\_\_ feet from  E /  W Line of Section  
GPS Location: Lat: \_\_\_\_\_, Long: \_\_\_\_\_  
(e.g. xx.xxxxx) (e.g. -xxx.xxxxx)  
Datum:  NAD27  NAD83  WGS84  
County: \_\_\_\_\_ Elevation: \_\_\_\_\_  GL  KB  
Lease Name: \_\_\_\_\_ Well #: \_\_\_\_\_  
Well Type: (check one)  Oil  Gas  OG  WSW  Other: \_\_\_\_\_  
 SWD Permit #: \_\_\_\_\_  ENHR Permit #: \_\_\_\_\_  
 Gas Storage Permit #: \_\_\_\_\_  
Spud Date: \_\_\_\_\_ Date Shut-In: \_\_\_\_\_

	Conductor	Surface	Production	Intermediate	Liner	Tubing
Size						
Setting Depth						
Amount of Cement						
Top of Cement						
Bottom of Cement						

Casing Fluid Level from Surface: \_\_\_\_\_ How Determined? \_\_\_\_\_ Date: \_\_\_\_\_  
Casing Squeeze(s): \_\_\_\_\_ to \_\_\_\_\_ w / \_\_\_\_\_ sacks of cement, \_\_\_\_\_ to \_\_\_\_\_ w / \_\_\_\_\_ sacks of cement. Date: \_\_\_\_\_  
(top) (bottom) (top) (bottom)  
Do you have a valid Oil & Gas Lease?  Yes  No  
Depth and Type:  Junk in Hole at \_\_\_\_\_ (depth)  Tools in Hole at \_\_\_\_\_ (depth) Casing Leaks:  Yes  No Depth of casing leak(s): \_\_\_\_\_  
Type Completion:  ALT. I  ALT. II Depth of:  DV Tool: \_\_\_\_\_ w / \_\_\_\_\_ sacks of cement  Port Collar: \_\_\_\_\_ w / \_\_\_\_\_ sack of cement  
(depth) (depth)  
Packer Type: \_\_\_\_\_ Size: \_\_\_\_\_ Inch Set at: \_\_\_\_\_ Feet  
Total Depth: \_\_\_\_\_ Plug Back Depth: \_\_\_\_\_ Plug Back Method: \_\_\_\_\_

Geological Data:

Formation Name	Formation Top	Formation Base	Completion Information
1. _____	At: _____	to _____ Feet	Perforation Interval _____ to _____ Feet or Open Hole Interval _____ to _____ Feet
2. _____	At: _____	to _____ Feet	Perforation Interval _____ to _____ Feet or Open Hole Interval _____ to _____ Feet

UNDER PENALTY OF PERJURY I HEREBY ATTEST THAT THE INFORMATION CONTAINED HEREIN IS TRUE AND CORRECT TO THE BEST OF MY KNOWLEDGE

Submitted Electronically

**Do NOT Write in This Space - KCC USE ONLY**

Date Tested: \_\_\_\_\_ Results: \_\_\_\_\_ Date Plugged: \_\_\_\_\_ Date Repaired: \_\_\_\_\_ Date Put Back in Service: \_\_\_\_\_

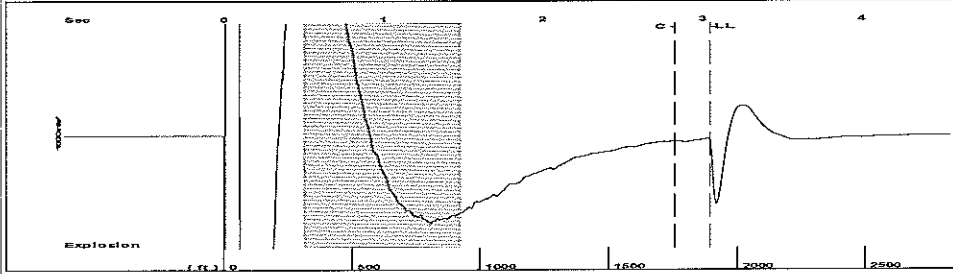
Review Completed by: \_\_\_\_\_ Comments: \_\_\_\_\_

TA Approved:  Yes  Denied Date: \_\_\_\_\_

Mail to the Appropriate KCC Conservation Office:

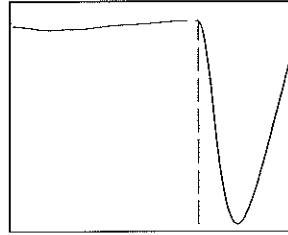
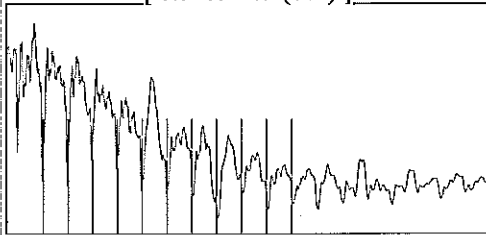
	KCC District Office #1 - 210 E. Frontview, Suite A, Dodge City, KS 67801	Phone 620.225.8888
	KCC District Office #2 / UPGS - 3450 N. Rock Road, Building 600, Suite 601, Wichita, KS 67226	Phone 316.630.4000
	KCC District Office #3 - 1500 SW Seventh Steet, Chanute, KS 66720	Phone 620.432.2300
	KCC District Office #4 - 2301 E. 13th Street, Hays, KS 67601-2651	Phone 785.625.0550

Group: MyWells Well: Ellsaesser 1-16 (acquired on: 10/04/13 07:38:34 )



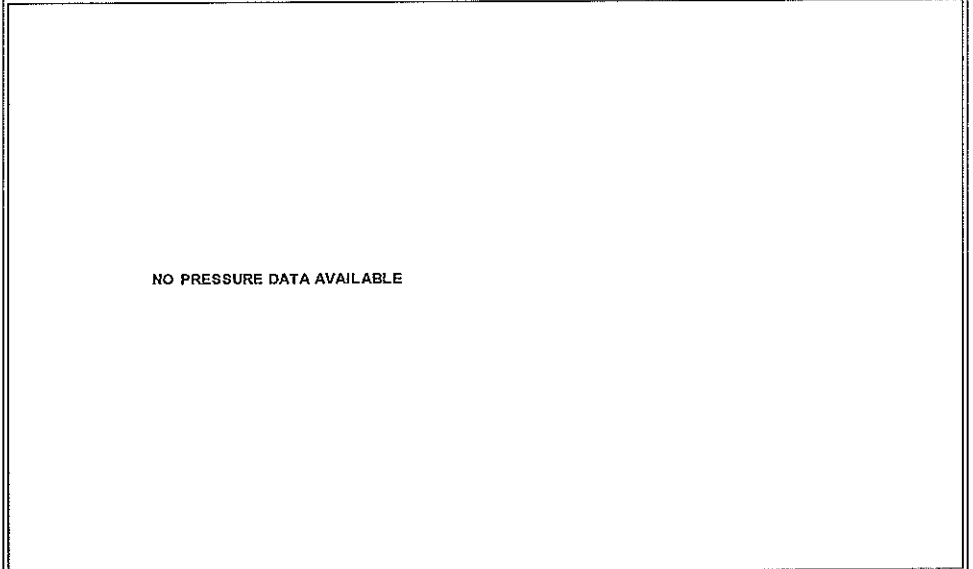
Filter Type High Pass Automatic Collar Count Yes Time 3.045 sec  
 Manual Acoustic Veloc 1233.46 ft/s Manual JTS/sec 19.4553 Joints 59.7059 Jts  
 Depth 1892.68 ft

[ 0.5 to 1.5 (Sec) ]



Analysis Method: Automatic

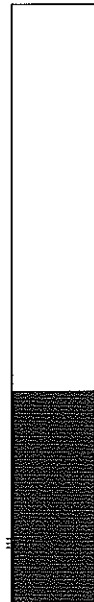
Group: MyWells Well: Ellsaesser 1-16 (acquired on: 10/04/13 07:38:34 )



Change in Pressure 0.00 psi NONE  
 Range 0 - ? psi  
 Change in Time 0.00 min

Group: MyWells Well: Ellsaesser 1-16 (acquired on: 10/04/13 07:38:34 )

Production			
Current	Potential	Casing Pressure	Producing
Oil - * -	- * - BBL/D	4238.4 psi (g)	Annular
Water - * -	- * - BBL/D	Casing Pressure Buildup	Gas Flow
Gas - * -	- * - Mscf/D	- * - psi	- * - Mscf/D
		- * - min	% Liquid
IPR Method	Vogel	Gas/Liquid Interface Pressure	100 %
PBHP/SBHP	- * -	- * - psi (g)	
Production Efficiency	0.0		
Oil 40 deg.API		Liquid Level Depth	
Water 1.05 Sp.Gr.H2O		1892.68 ft	
Gas 0.70 Sp.Gr.AIR		Pump Intake Depth	
		- * - ft	
Acoustic Velocity	1243.14 ft/s	Formation Depth	
		2775.00 ft	

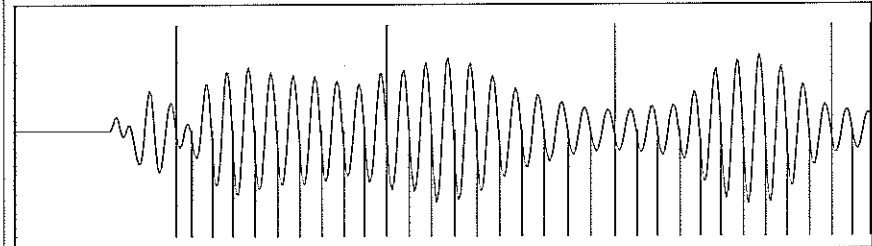


Formation Submergence  
 Total Gaseous Liquid Column HT (TVD) - \* - ft  
 Equivalent Gas Free Liquid HT (TVD) - \* - ft

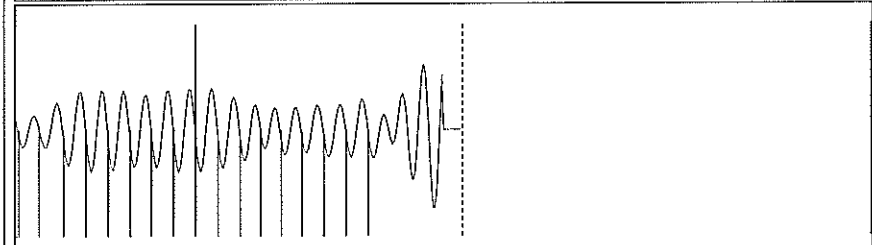
Acoustic Test

Pump Intake - \* - psi (g)  
 Producing BHP - \* - psi (g)  
 Static BHP - \* - psi (g)

Group: MyWells Well: Ellsaesser 1-16 (acquired on: 10/04/13 07:38:34 )



19.62



19.59

Acoustic Velocity	1243.14 ft/s	Joints counted	48
Joints Per Second	19.6078 jts/sec	Joints to liquid level	59.7059
Depth to liquid level	1892.68 ft	Filter Width	17.4553 21.4553
Automatic Collar Count	Yes	Time to 1st Collar	0.376 2.824

Conservation Division  
District Office No. 1  
210 E. Frontview, Suite A  
Dodge City, KS 67801



Phone: 620-225-8888  
Fax: 620-225-8885  
<http://kcc.ks.gov/>

Mark Sievers, Chairman  
Thomas E. Wright, Commissioner  
Shari Feist Albrecht, Commissioner

Sam Brownback, Governor

October 10, 2013

Dawn Richardson  
Chesapeake Operating, Inc.  
6100 N WESTERN AVE  
PO BOX 18496  
OKLAHOMA CITY, OK 73118-0496

Re: Temporary Abandonment  
API 15-081-20076-00-00  
ELLSAESSER 1-16  
SW/4 Sec.16-30S-31W  
Haskell County, Kansas

Dear Dawn Richardson:

Your application for Temporary Abandonment (TA) of the above-listed well is denied for the following reasons(s):

**NOLSE - Lack of lease**

In accordance with K.A.R. 82-3-111, this well must be plugged or returned to service by November 09, 2013.

Sincerely,

Steve Pfeifer