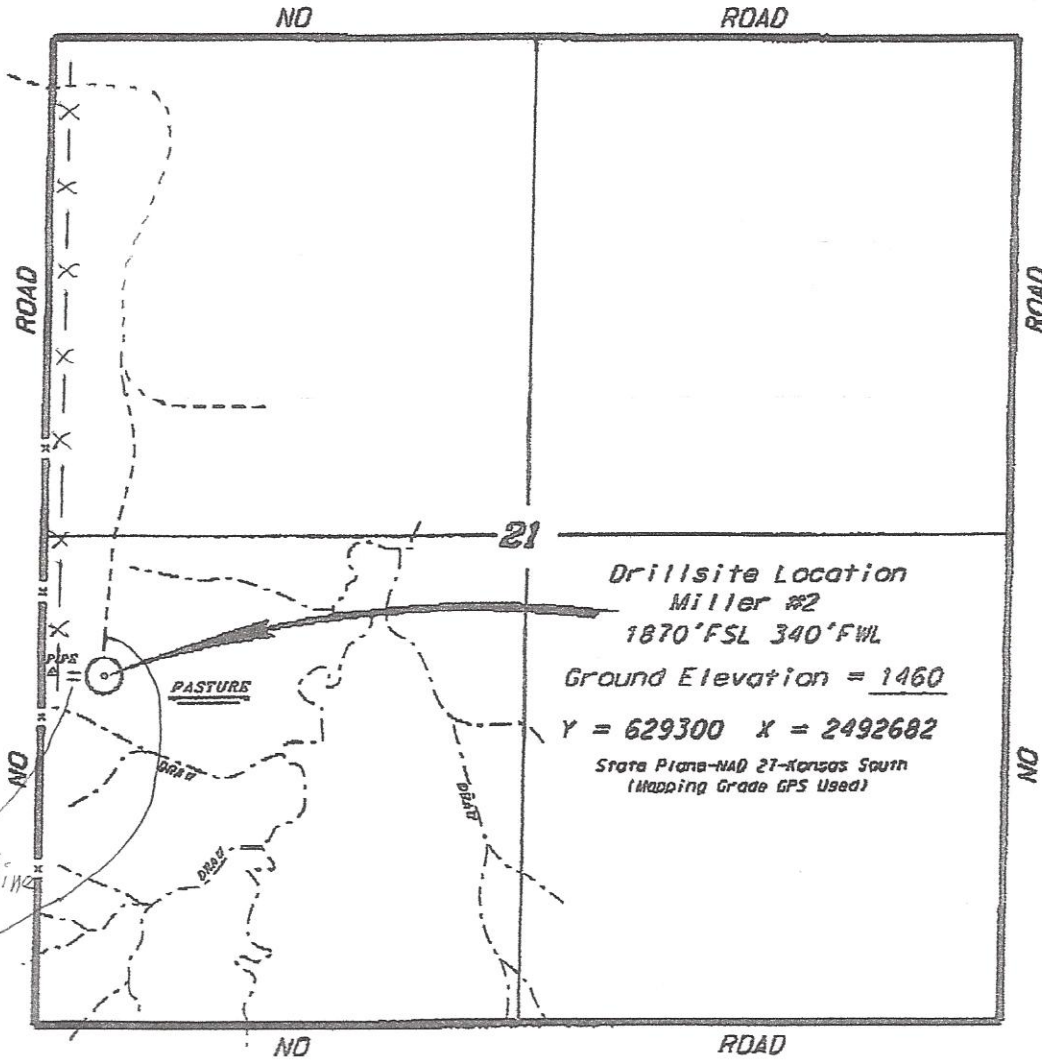


KREMIER OIL & GAS, INC.
 MILLER LEASE
 SW. 1/4, SECTION 21, T19S, R6E
 CHASE COUNTY, KANSAS

Ingress and egress to location as shown on this plat is for usage only and may not be legally opened for public use. Contact landowner, tenant and county road department for access.

New Gas Pipeline
 New Lease Rd



- Existing Lease Roads
- - - - - New Lease Road/s
- X - X - Existing Gas Pipeline
- =====
===== New Gas Pipeline

No tank batteries
 No electrical lines