

Pintail Petroleum, Ltd.

#2-10 Kerr 'DG'

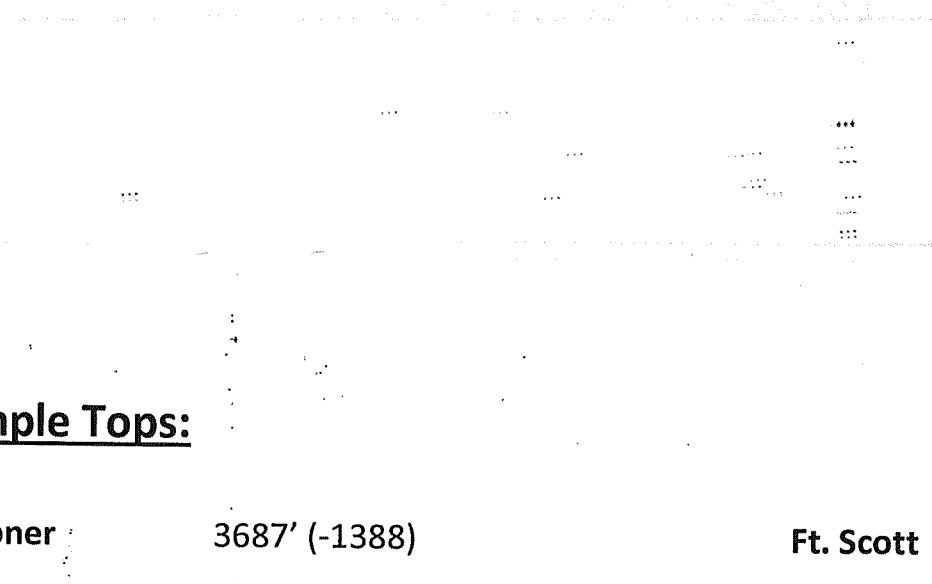
15-135-25586
SW/SE/NW/NW
1250'FNL & 790'F WL
Sec 10 T19S R24W

Franklinville Field
Ness County KS

Spud date: June 4th, 2013
Drig. comp p date: June 8th, 2013

GL: 2294'
VGS: 2299'
RTD: 4400'
4000 feet

All measurements taken from 68.
Geologist Seth Evenson on location June 8th, 2013 at 3:30pm @ 4112 ft.
Contractor: Mallard JV
1 foot drill time least from 3600 ft. to TD.
Samples examined from 4000 ft. to TD.



Sample Tops:

Heebner	3687' (-1388)	Ft. Scott	4233' (-1934)	e-log (-1932)
Toronto	3711' (-1412)	Cherokee	4258' (-1959)	e-log (-1955)
Lansing	3728' (-1429)	Cherty Conglmt	4309' (-2010)	e-log (-2005)
J zone	3954' (-1655)	Mississippi Dol	4342' (-2043)	e-log (-2039)
Hushpuckney	4008' (-1709)	RTD	4400' (-2101)	
BKC	4035' (-1736)			
Marmaton	4075' (-1776)			
Pawnee	4156' (-1857)	e-log (-1852)		

Drill Stem Tests

DST #1
Mississippian
4281'-4352'
30-30-60-60

IHP 2130#
IFP 27#-113#
ISIP 1237#
FFP 117#-197#
FSP 1263#
FHP 2098#

Rec:
160' SGOCM (5% G, 35% O)
120' SG&WCHOCM (5% G, 40% O, 5% W)
120' O&WCM (15% O, 35% W)

Structural Comparison:

	#2-10 Kerr 'DG' 10-19S-24W SW/SE/NW/NW	#1-10 Kerr 'DG' 10-19S-24W NE/NE/NW (+731)	#1-10 Aaron 10-19S-24W SE/SW/NW/NE (+738)	#1 Berger B 10-19S-24W SW/NE/NW (+733)
Anhydrite				
Heebner	(-1388)	(-1391) (+3)	(-1389) (+1)	(-1392) (+4)
Lansing	(-1429)	(-1436) (+7)	(-1431) (+2)	(-1435) (+6)
BKC	(-1736)	(-1734) (-2)	(-1737) (+1)	(-1739) (+3)
Marmaton	(-1776)	(-1777) (+1)	(-1778) (+2)	(-1779) (+3)
Pawnee	(-1852)	(-1855) (+3)	(-1853) (+2)	(-1857) (+5)
Ft. Scott	(-1932)	(-1935) (+3)	(-1935) (+3)	(-1937) (+5)
Cherokee	(-1955)	(-1958) (+3)	(-1957) (+2)	(-1959) (+4)
Miss Dolo	(-2039)	(-2051) (+12)	(-2031) (-8)	(-2035) (-4)

The #2-10 Kerr 'DG', was successfully drilled to a total depth of 4400', with 5.5 inch production casing cemented on the 8th day of June, 2013. Fair to good shows of free oil and stain were found in fairly light, dense, light brown dolomite with poor to some fair inter-crystalline porosity in the top of the Mississippian. One drill stem test was run, covering the top ten feet of the Mississippian dolomite. The test recovered approximately 280 feet of HOBSSGCM, along with 120 feet of HW&SOCM. Rat-hut in pressures held steady in the mid 1200# range, and so it was decided to attempt production through 5.5 inch casing. Shut-in for a cased-hole log was drilled to 4400', and a second, minor show was encountered in the dolomite at around 4370 feet.

There was approximately 17 feet of highly vuggy cherty conglomeration encountered at 4309'. This chert was highly vuggy, with good to very heavy black asphaltic stain, saturation, and production to a fair show of black free oil. I feel that it would be an interesting experiment to perforate and frack this chert zone, for traction testing, sometime before abandonment.

The Fort Scott limestone had a fair to good show of gassy free oil on break. The limestone was non-ooidic, with several pieces containing scattered deep vugs, and pinpoint porosity. The Fort Scott should be tested through perforations before abandonment.

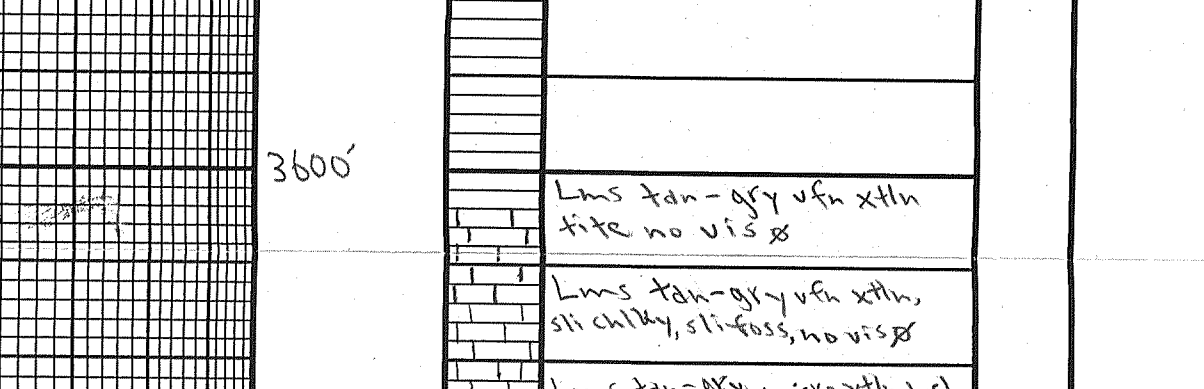
Finally, a show of live, spotty brown stain, and a trace of free oil was found in slightly chalky limestone, with very poor inter-crystalline, and poor pinpoint vuggy porosity. This is from the upper Marmaton section, and maybe tested through perforations if all other options are exhausted.

A cased hole log was run in order to locate zones to perforate more precisely. After performing the Mississippian dolomite from 4338'-4348', the well channeled significant water behind casing from the formation below. The perforations were squeezed off, and after time to harden; the well was "sand-cut" from 4339'-4341'. Hydraulic perforating job was successful. Well put on pump, making approximately 3.5 BOPD, and no water.

Respectfully submitted,

Seth Evenson

LEGEND



DRILLING TIME IN MINUTES PER FOOT Rate of Penetration Decreases	DEPTH	ASOTOHULT	SAMPLE DESCRIPTIONS	SINCHS TID	REMARKS
	3600'		Lims tan-agg with xth, no vis ss		
	3650'		Lims tan-agg with xth, no vis ss		
	3700'		Lims tan-agg with xth, no vis ss		
	3750'		Lims tan-agg with xth, no vis ss		
	3800'		Lims tan-agg with xth, no vis ss		
	3850'		Lims tan-agg with xth, no vis ss		
	3900'		Lims tan-agg with xth, no vis ss		
	3950'		Lims tan-agg with xth, no vis ss		
	4000'		Lims tan-agg with xth, no vis ss		
	4050'		Lims tan-agg with xth, no vis ss		
	4100'		Lims tan-agg with xth, no vis ss		
	4150'		Lims tan-agg with xth, no vis ss		
	4200'		Lims tan-agg with xth, no vis ss		
	4250'		Lims tan-agg with xth, no vis ss		
	4300'		Lims tan-agg with xth, no vis ss		
	4350'		Lims tan-agg with xth, no vis ss		
	4400'		Lims tan-agg with xth, no vis ss		

CONTRACTOR: Mallard JV
LEASE: Kerr DG
ELEVATION: KB 22.99
RTD: 4400'

LOCATION: 1250' FNL & 790' FWL
SEC. 10 TWP. 19S RNG 24W
COUNTY: Ness STATE: Kansas

CFS 4400' 60 min: Dolomite tan-agg with xth, no vis ss, but addresses readily equitably, flow - less than 5% of per. 1950, si, color, but show. The frac, what-act seem. Inadequate work.