



DRILL STEM TEST REPORT

Prepared For: **Shelby Resources**

2717 Canal Blvd. Hays Kansas 67601

ATTN: Jeremy Schwartz

Schlessiger Cattle

2-18s-14w-Barton

Start Date: 2013.05.22 @ 05:40:00

End Date: 2013.05.22 @ 12:41:30

Job Ticket #: 18378 DST #: 1

Superior Testers Enterprises LLC
PO Box 138 Great Bend KS 67530
1-800-792-6902

Printed: 2013.05.23 @ 21:54:52



DRILL STEM TEST REPORT

TOOL DIAGRAM

Shelby Resources
 2717 Canal Blvd. Hays Kansas 67601
 ATTN: Jeremy Schwartz

2-18s-14w-Barton
Schlessiger Cattle
 Job Ticket: 18378 **DST#: 1**
 Test Start: 2013.05.22 @ 05:40:00

Tool Information

Drill Pipe:	Length: 2820.00 ft	Diameter: 3.80 inches	Volume: 39.56 bbl	Tool Weight: 2000.00 lb
Heavy Wt. Pipe:	Length: 0.00 ft	Diameter: 0.00 inches	Volume: 0.00 bbl	Weight set on Packer: 20000.00 lb
Drill Collar:	Length: 276.44 ft	Diameter: 2.25 inches	Volume: 1.36 bbl	Weight to Pull Loose: 72000.00 lb
			<u>Total Volume: 40.92 bbl</u>	Tool Chased 0.00 ft
Drill Pipe Above KB:	31.44 ft			String Weight: Initial 68000.00 lb
Depth to Top Packer:	3093.00 ft			Final 70000.00 lb
Depth to Bottom Packer:	ft			
Interval between Packers:	61.40 ft			
Tool Length:	89.40 ft			
Number of Packers:	2	Diameter: 6.75 inches		

Tool Comments:

Tool Description	Length (ft)	Serial No.	Position	Depth (ft)	Accum. Lengths
Shut-In Tool	5.00			3070.00	
Hydraulic Tool	5.00			3075.00	
Safety Joint	2.00			3077.00	
Jars	6.00			3083.00	
Packer	5.00			3088.00	28.00 Bottom Of Top Packer
Packer	5.00			3093.00	
Anchor	5.00			3098.00	
Change Over Sub	0.75			3098.75	
Drill Pipe	31.90			3130.65	
Change Over Sub	0.75			3131.40	
Anchor	18.00			3149.40	
Recorder	1.00	6839	Inside	3150.40	
Recorder	1.00	6806	Inside	3151.40	
Bullnose	3.00			3154.40	61.40 Bottom Packers & Anchor

Total Tool Length: 89.40



DRILL STEM TEST REPORT

FLUID SUMMARY

Shelby Resources
2717 Canal Blvd. Hays Kansas 67601
ATTN: Jeremy Schwartz

2-18s-14w-Barton
Schlessiger Cattle
Job Ticket: 18378 **DST#: 1**
Test Start: 2013.05.22 @ 05:40:00

Mud and Cushion Information

Mud Type: Gel Chem	Cushion Type:	Oil API:	deg API
Mud Weight: 9.00 lb/gal	Cushion Length: ft	Water Salinity:	ppm
Viscosity: 47.00 sec/qt	Cushion Volume: bbl		
Water Loss: 7.19 in ³	Gas Cushion Type:		
Resistivity: ohm.m	Gas Cushion Pressure: psia		
Salinity: 6600.00 ppm			
Filter Cake: 1.00 inches			

Recovery Information

Recovery Table

Length ft	Description	Volume bbl
244.00	Slightly mud cut gassy oil	1.200
0.00	Oil 50% Gas40% Mud 10%	0.000
244.00	Heavily mud cut oil Oil 70%Mud 30%	3.127

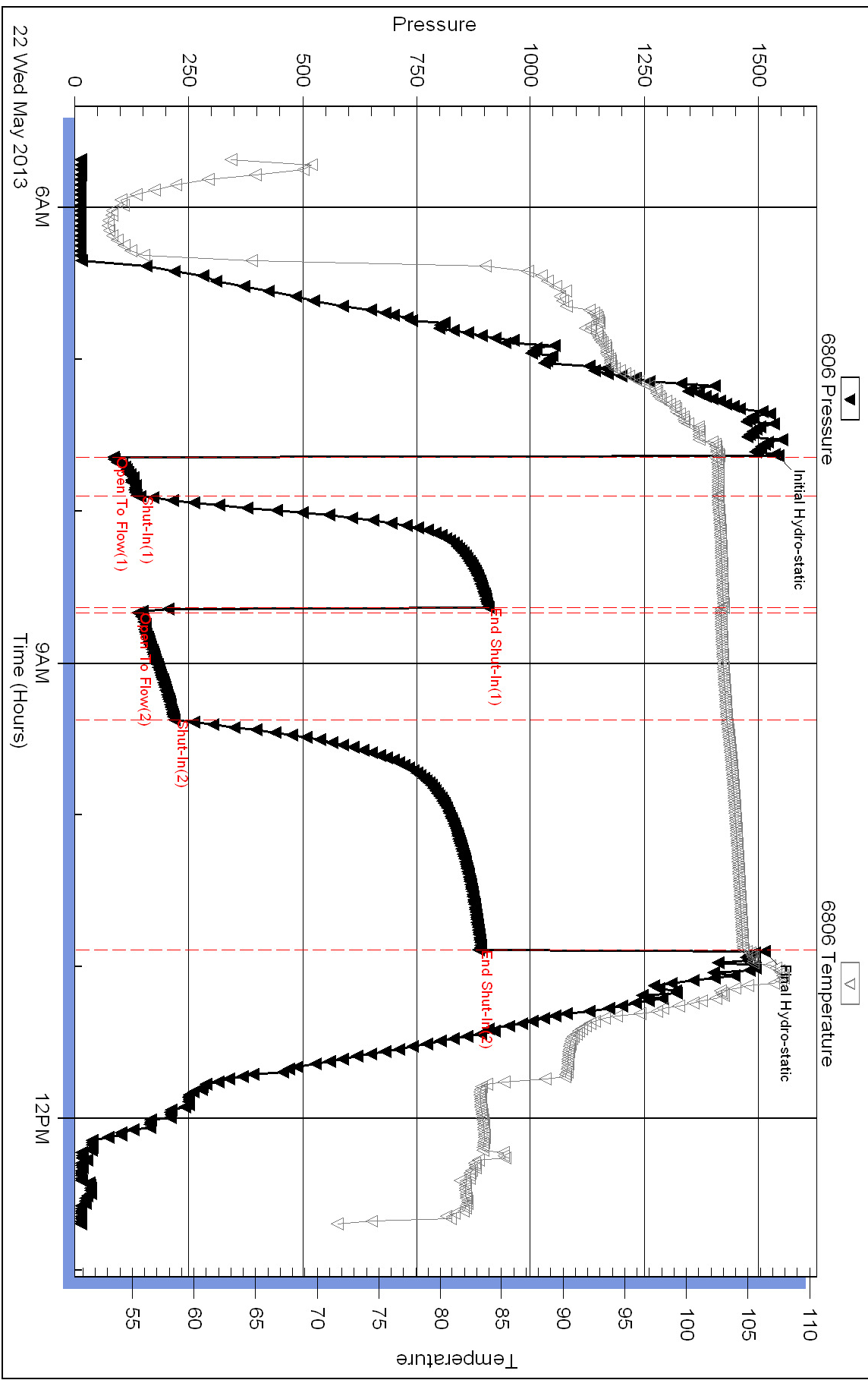
Total Length: 488.00 ft Total Volume: 4.327 bbl

Num Fluid Samples: 0 Num Gas Bombs: 0 Serial #:

Laboratory Name: Laboratory Location:

Recovery Comments:

Pressure vs. Time



Pressure vs. Time

