



DRILL STEM TEST REPORT

Prepared For: **Shelby Resources**

2717 Canal Blvd. Hays Kansas 67601

ATTN: Jeremy Schwartz

Schlessiger Cattle

2-18s-14w-Barton

Start Date: 2013.05.22 @ 09:38:00

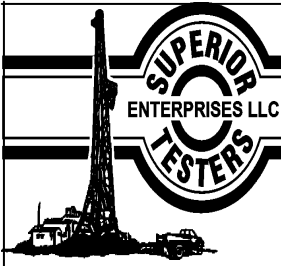
End Date: 2013.05.22 @ 16:27:30

Job Ticket #: 18379 DST #: 2

Superior Testers Enterprises LLC
PO Box 138 Great Bend KS 67530
1-800-792-6902

Printed: 2013.05.23 @ 04:52:56

Shelby Resources
2-18s-14w-Barton
Schlessiger Cattle
DST # 2
Lansing F-G
2013.05.22



DRILL STEM TEST REPORT

Shelby Resources
 2717 Canal Blvd. Hays Kansas 67601
 ATTN: Jeremy Schwartz

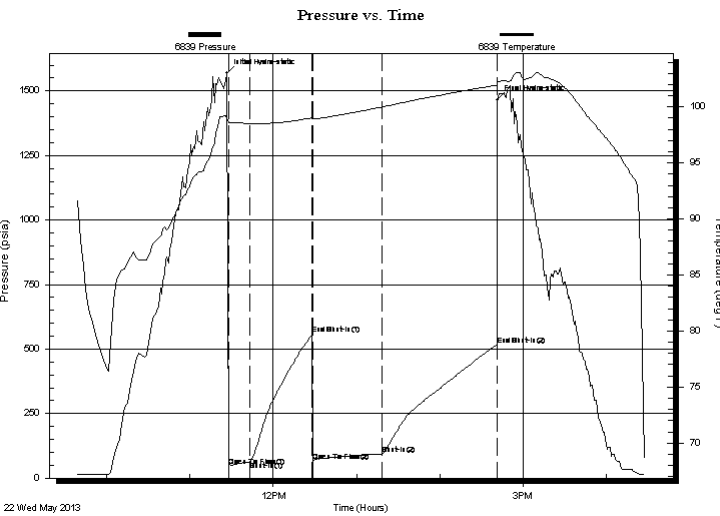
2-18s-14w-Barton
Schlessiger Cattle
 Job Ticket: 18379 **DST#: 2**
 Test Start: 2013.05.22 @ 09:38:00

GENERAL INFORMATION:

Formation: **Lansing F-G**
 Deviated: No Whipstock: ft (KB)
 Test Type: Conventional Bottom Hole (Initial)
 Time Tool Opened: 11:27:30 Tester: Dustin Ellis
 Time Test Ended: 16:27:30 Unit No: 3315-Great Bend-30
 Interval: **3153.00 ft (KB) To 3190.00 ft (KB) (TVD)** Reference Elevations: 1842.00 ft (KB)
 Total Depth: 3190.00 ft (KB) (TVD) 1833.00 ft (CF)
 Hole Diameter: 7.88 inches Hole Condition: Fair KB to GR/CF: 9.00 ft

Serial #: 6839 Inside
 Press@RunDepth: 93.71 psia @ 3186.00 ft (KB) Capacity: 5000.00 psia
 Start Date: 2013.05.22 End Date: 2013.05.22 Last Calib.: 2013.05.23
 Start Time: 09:38:00 End Time: 16:27:30 Time On Btm: 2013.05.22 @ 11:26:30
 Time Off Btm: 2013.05.22 @ 14:41:30

TEST COMMENT: 1st Open 15 minutes Weak building blow blew 1 inch into the the bucket of water
 1st Shut in 45 minutes No blow back
 2nd Open 45 minutes Weak blow stayed at 1 inch through out .
 2nd Shut in 90 minutes No blow back



PRESSURE SUMMARY

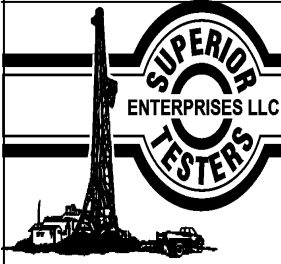
Time (Min.)	Pressure (psia)	Temp (deg F)	Annotation
0	1568.78	99.04	Initial Hydro-static
1	45.19	98.61	Open To Flow (1)
17	63.56	98.51	Shut-In(1)
62	558.81	99.02	End Shut-In(1)
62	66.27	98.91	Open To Flow (2)
112	93.71	100.00	Shut-In(2)
195	516.36	101.94	End Shut-In(2)
195	1465.21	102.24	Final Hydro-static

Recovery

Length (ft)	Description	Volume (bbl)
61.00	Oil cut mud 15%Oil 85%Mud	0.30
61.00	Muddy water Mud 70% Water 30%	0.30
0.00	Chlorides 59,000 -.2ohms @56degrees	0.00

Gas Rates

Choke (inches)	Pressure (psia)	Gas Rate (Mcf/d)



DRILL STEM TEST REPORT

Shelby Resources
 2717 Canal Blvd. Hays Kansas 67601
 ATTN: Jeremy Schwartz

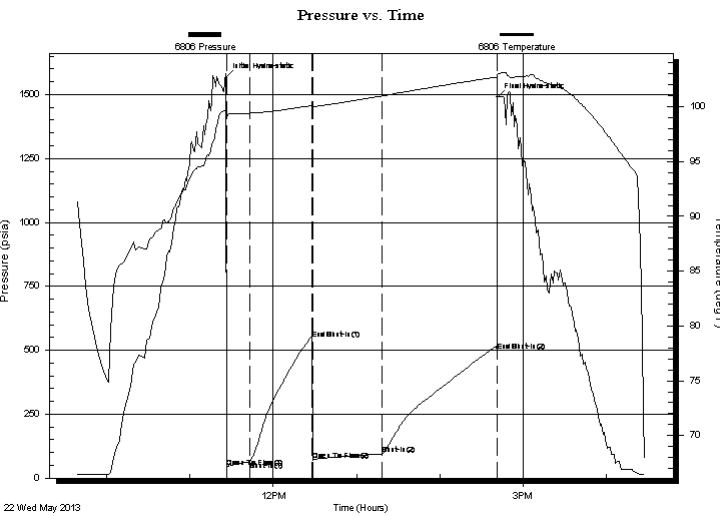
2-18s-14w-Barton
Schlessiger Cattle
 Job Ticket: 18379 **DST#: 2**
 Test Start: 2013.05.22 @ 09:38:00

GENERAL INFORMATION:

Formation: **Lansing F-G**
 Deviated: No Whipstock: ft (KB)
 Test Type: Conventional Bottom Hole (Initial)
 Time Tool Opened: 11:27:30 Tester: Dustin Ellis
 Time Test Ended: 16:27:30 Unit No: 3315-Great Bend-30
Interval: 3153.00 ft (KB) To 3190.00 ft (KB) (TVD)
 Reference Elevations: 1842.00 ft (KB)
 Total Depth: 3190.00 ft (KB) (TVD) 1833.00 ft (CF)
 Hole Diameter: 7.88 inches Hole Condition: Fair KB to GR/CF: 9.00 ft

Serial #: 6806 Outside
 Press@RunDepth: 495.02 psia @ 3187.00 ft (KB) Capacity: 5000.00 psia
 Start Date: 2013.05.22 End Date: 2013.05.22 Last Calib.: 2013.05.23
 Start Time: 09:38:00 End Time: 16:28:00 Time On Btm: 2013.05.22 @ 11:26:00
 Time Off Btm: 2013.05.22 @ 14:41:30

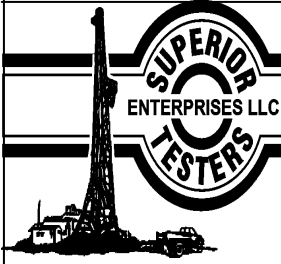
TEST COMMENT: 1st Open 15 minutes Weak building blow blew 1 inch into the the bucket of water
 1st Shut in 45 minutes No blow back
 2nd Open 45 minutes Weak blow stayed at 1 inch through out .
 2nd Shut in 90 minutes No blow back



PRESSURE SUMMARY			
Time (Min.)	Pressure (psia)	Temp (deg F)	Annotation
0	1564.99	99.68	Initial Hydro-static
1	43.06	99.02	Open To Flow (1)
17	65.25	99.41	Shut-In(1)
62	545.58	100.12	End Shut-In(1)
63	69.44	100.03	Open To Flow (2)
113	94.65	100.99	Shut-In(2)
195	495.02	102.70	End Shut-In(2)
196	1488.95	102.96	Final Hydro-static

Recovery		
Length (ft)	Description	Volume (bbl)
61.00	Oil cut mud 15%Oil 85%Mud	0.30
61.00	Muddy water Mud 70% Water 30%	0.30
0.00	Chlorides 59,000 -.2ohms @56degrees	0.00

Gas Rates			
	Choke (inches)	Pressure (psia)	Gas Rate (Mcf/d)



DRILL STEM TEST REPORT

TOOL DIAGRAM

Shelby Resources
 2717 Canal Blvd. Hays Kansas 67601
 ATTN: Jeremy Schwartz

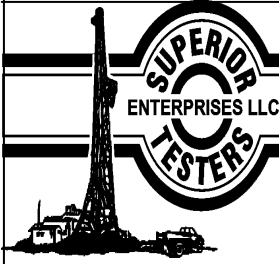
2-18s-14w-Barton
Schlessiger Cattle
 Job Ticket: 18379 **DST#: 2**
 Test Start: 2013.05.22 @ 09:38:00

Tool Information

Drill Pipe:	Length: 2880.00 ft	Diameter: 3.80 inches	Volume: 40.40 bbl	Tool Weight: 2000.00 lb
Heavy Wt. Pipe:	Length: 0.00 ft	Diameter: 0.00 inches	Volume: 0.00 bbl	Weight set on Packer: 20000.00 lb
Drill Collar:	Length: 276.44 ft	Diameter: 2.25 inches	Volume: 1.36 bbl	Weight to Pull Loose: 73000.00 lb
			<u>Total Volume: 41.76 bbl</u>	Tool Chased 0.00 ft
Drill Pipe Above KB:	31.44 ft			String Weight: Initial 67000.00 lb
Depth to Top Packer:	3153.00 ft			Final 68000.00 lb
Depth to Bottom Packer:	ft			
Interval between Packers:	37.00 ft			
Tool Length:	65.00 ft			
Number of Packers:	2	Diameter: 6.75 inches		

Tool Comments:

Tool Description	Length (ft)	Serial No.	Position	Depth (ft)	Accum. Lengths
Shut-In Tool	5.00			3130.00	
Hydraulic Tool	5.00			3135.00	
Safety Joint	2.00			3137.00	
Jars	6.00			3143.00	
Packer	5.00			3148.00	28.00 Bottom Of Top Packer
Packer	5.00			3153.00	
Anchor	32.00			3185.00	
Recorder	1.00	6839	Inside	3186.00	
Recorder	1.00	6806	Outside	3187.00	
Bullnose	3.00			3190.00	37.00 Bottom Packers & Anchor
Total Tool Length:	65.00				



DRILL STEM TEST REPORT

FLUID SUMMARY

Shelby Resources
2717 Canal Blvd. Hays Kansas 67601
ATTN: Jeremy Schwartz

2-18s-14w-Barton
Schlessiger Cattle
Job Ticket: 18379 **DST#: 2**
Test Start: 2013.05.22 @ 09:38:00

Mud and Cushion Information

Mud Type:	Gel Chem	Cushion Type:		Oil API:	deg API
Mud Weight:	9.00 lb/gal	Cushion Length:	ft	Water Salinity:	ppm
Viscosity:	58.00 sec/qt	Cushion Volume:	bbbl		
Water Loss:	7.60 in ³	Gas Cushion Type:			
Resistivity:	ohm.m	Gas Cushion Pressure:	psia		
Salinity:	5100.00 ppm				
Filter Cake:	1.00 inches				

Recovery Information

Recovery Table

Length ft	Description	Volume bbbl
61.00	Oil cut mud 15%Oil 85%Mud	0.300
61.00	Muddy w ater Mud 70% Water 30%	0.300
0.00	Chlorides 59,000 -.2ohms.@56degrees	0.000

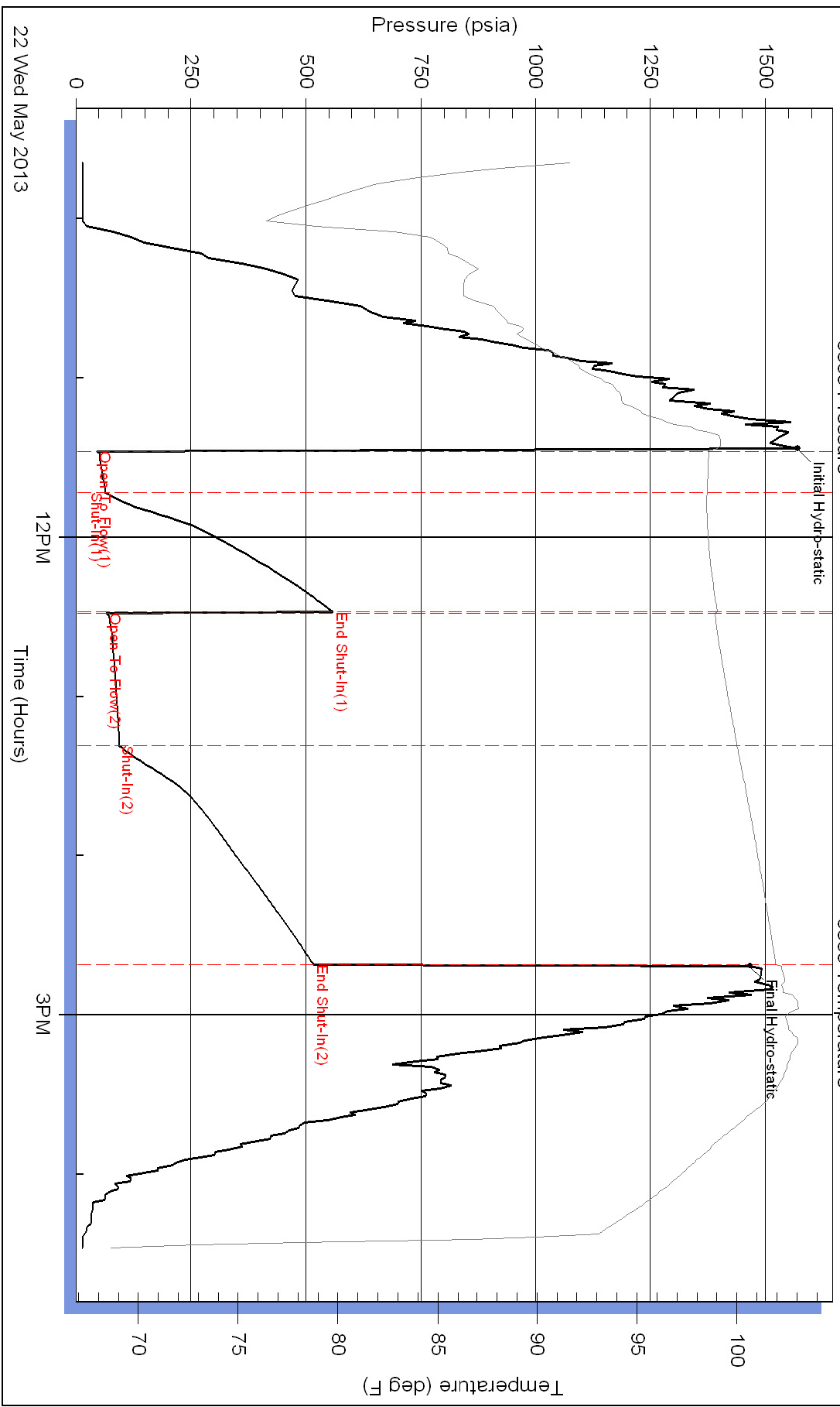
Total Length: 122.00 ft Total Volume: 0.600 bbl

Num Fluid Samples: 0 Num Gas Bombs: 0 Serial #:

Laboratory Name: Laboratory Location:

Recovery Comments:

Pressure vs. Time



22 Wed May 2013

