



## DRILL STEM TEST REPORT

Prepared For: **Shelby Resources**

2717 Canal Blvd. Hays Kansas 67601

ATTN: Jeremy Schwartz

**Schlessiger Cattle**

**2-18s-14w-Barton**

Start Date: 2013.05.25 @ 02:00:00

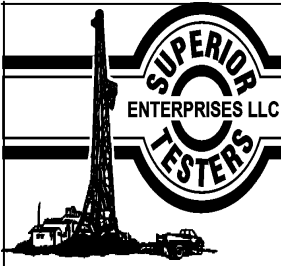
End Date: 2013.05.25 @ 09:34:30

Job Ticket #: 18382                      DST #: 5

Superior Testers Enterprises LLC  
PO Box 138 Great Bend KS 67530  
1-800-792-6902

Printed: 2013.05.25 @ 10:00:11





# DRILL STEM TEST REPORT

Shelby Resources  
 2717 Canal Blvd. Hays Kansas 67601  
 ATTN: Jeremy Schwartz

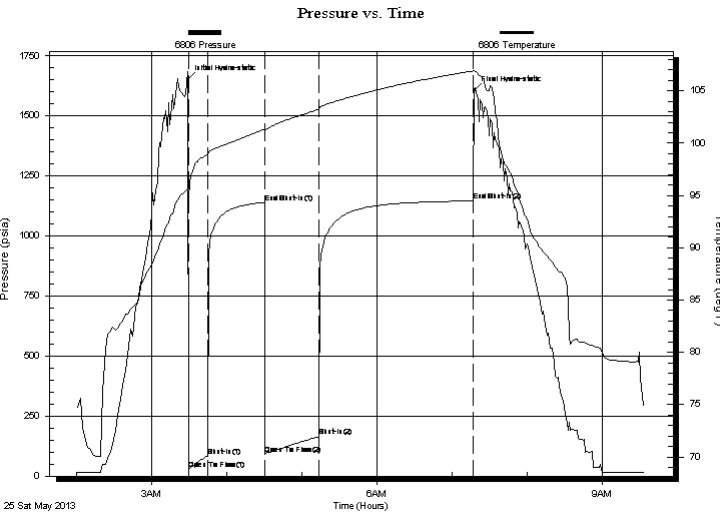
**2-18s-14w-Barton**  
**Schlessiger Cattle**  
 Job Ticket: 18382 **DST#: 5**  
 Test Start: 2013.05.25 @ 02:00:00

## GENERAL INFORMATION:

Formation: **Arbuckle**  
 Deviated: No Whipstock: ft (KB)  
 Test Type: Conventional Bottom Hole (Initial)  
 Time Tool Opened: 03:30:30 Tester: Dustin Ellis  
 Time Test Ended: 09:34:30 Unit No: 3315-Great Bend-30  
 Interval: **3335.00 ft (KB) To 3342.00 ft (KB) (TVD)** Reference Elevations: 1842.00 ft (KB)  
 Total Depth: 3342.00 ft (KB) (TVD) 1833.00 ft (CF)  
 Hole Diameter: 7.88 inches Hole Condition: Fair KB to GR/CF: 9.00 ft

**Serial #: 6806 Outside**  
 Press@RunDepth: 1146.48 psia @ 3339.00 ft (KB) Capacity: 5000.00 psia  
 Start Date: 2013.05.25 End Date: 2013.05.25 Last Calib.: 2013.05.25  
 Start Time: 02:00:00 End Time: 09:34:00 Time On Btm: 2013.05.25 @ 03:29:00  
 Time Off Btm: 2013.05.25 @ 07:17:30

**TEST COMMENT:** 1st Open 15 minutes Weak building blow built to 2 inches.  
 1st Shut in 45 minutes No blow back  
 2nd Open 45 minutes Weak building blow built to 2 inches into a 5 gallon bucket of water  
 2nd Shut in 90 minutes Yes blow back



## PRESSURE SUMMARY

Time (Min.)	Pressure (psia)	Temp (deg F)	Annotation
0	1652.40	95.67	Initial Hydro-static
1	28.18	94.87	Open To Flow (1)
16	83.60	98.91	Shut-In(1)
61	1139.90	101.33	End Shut-In(1)
62	91.70	101.09	Open To Flow (2)
105	165.22	103.24	Shut-In(2)
228	1146.48	106.90	End Shut-In(2)
229	1606.05	106.97	Final Hydro-static

## Recovery

Length (ft)	Description	Volume (bbl)
335.00	Clean gassy oil 95%Oil 5%Gas	2.83
61.00	Slightly mud cut gassy oil	0.86
0.00	Oil 90% Gas 5% Mud 5%	0.00
0.00	Gravity of oil 37 corrected	0.00

## Gas Rates

	Choke (inches)	Pressure (psia)	Gas Rate (Mcf/d)



# DRILL STEM TEST REPORT

**TOOL DIAGRAM**

Shelby Resources  
 2717 Canal Blvd. Hays Kansas 67601  
 ATTN: Jeremy Schwartz

**2-18s-14w-Barton**  
**Schlessiger Cattle**  
 Job Ticket: 18382      **DST#: 5**  
 Test Start: 2013.05.25 @ 02:00:00

**Tool Information**

Drill Pipe:	Length: 3112.00 ft	Diameter: 3.80 inches	Volume: 43.65 bbl	Tool Weight:	2000.00 lb
Heavy Wt. Pipe:	Length: 0.00 ft	Diameter: 0.00 inches	Volume: 0.00 bbl	Weight set on Packer:	20000.00 lb
Drill Collar:	Length: 204.88 ft	Diameter: 2.25 inches	Volume: 1.01 bbl	Weight to Pull Loose:	74000.00 lb
			<u>Total Volume: 44.66 bbl</u>	Tool Chased	0.00 ft
Drill Pipe Above KB:	9.88 ft			String Weight: Initial	69000.00 lb
Depth to Top Packer:	3335.00 ft			Final	70000.00 lb
Depth to Bottom Packer:	ft				
Interval between Packers:	7.00 ft				
Tool Length:	35.00 ft				
Number of Packers:	2	Diameter: 6.75 inches			
Tool Comments:					

<b>Tool Description</b>	<b>Length (ft)</b>	<b>Serial No.</b>	<b>Position</b>	<b>Depth (ft)</b>	<b>Accum. Lengths</b>
-------------------------	--------------------	-------------------	-----------------	-------------------	-----------------------

Shut-In Tool	5.00			3312.00	
Hydraulic Tool	5.00			3317.00	
Safety Joint	2.00			3319.00	
Jars	6.00			3325.00	
Packer	5.00			3330.00	28.00      Bottom Of Top Packer
Packer	5.00			3335.00	
Anchor	2.00			3337.00	
Recorder	1.00	6839	Inside	3338.00	
Recorder	1.00	6806	Outside	3339.00	
Bullnose	3.00			3342.00	7.00      Bottom Packers & Anchor
<b>Total Tool Length:</b>	<b>35.00</b>				



# DRILL STEM TEST REPORT

## FLUID SUMMARY

Shelby Resources  
2717 Canal Blvd. Hays Kansas 67601  
ATTN: Jeremy Schwartz

**2-18s-14w-Barton**  
**Schlessiger Cattle**  
Job Ticket: 18382      **DST#: 5**  
Test Start: 2013.05.25 @ 02:00:00

### Mud and Cushion Information

Mud Type: Gel Chem	Cushion Type:	Oil API:	deg API
Mud Weight: 9.00 lb/gal	Cushion Length: ft	Water Salinity:	ppm
Viscosity: 51.00 sec/qt	Cushion Volume: bbl		
Water Loss: 8.80 in <sup>3</sup>	Gas Cushion Type:		
Resistivity: ohm.m	Gas Cushion Pressure: psia		
Salinity: 6200.00 ppm			
Filter Cake: 1.00 inches			

### Recovery Information

Recovery Table

Length ft	Description	Volume bbl
335.00	Clean gassy oil 95%Oil 5%Gas	2.833
61.00	Slightly mud cut gassy oil	0.856
0.00	Oil 90% Gas 5% Mud 5%	0.000
0.00	Gravity of oil 37 corrected	0.000

Total Length: 396.00 ft      Total Volume: 3.689 bbl  
Num Fluid Samples: 0      Num Gas Bombs: 0      Serial #:  
Laboratory Name:      Laboratory Location:  
Recovery Comments:

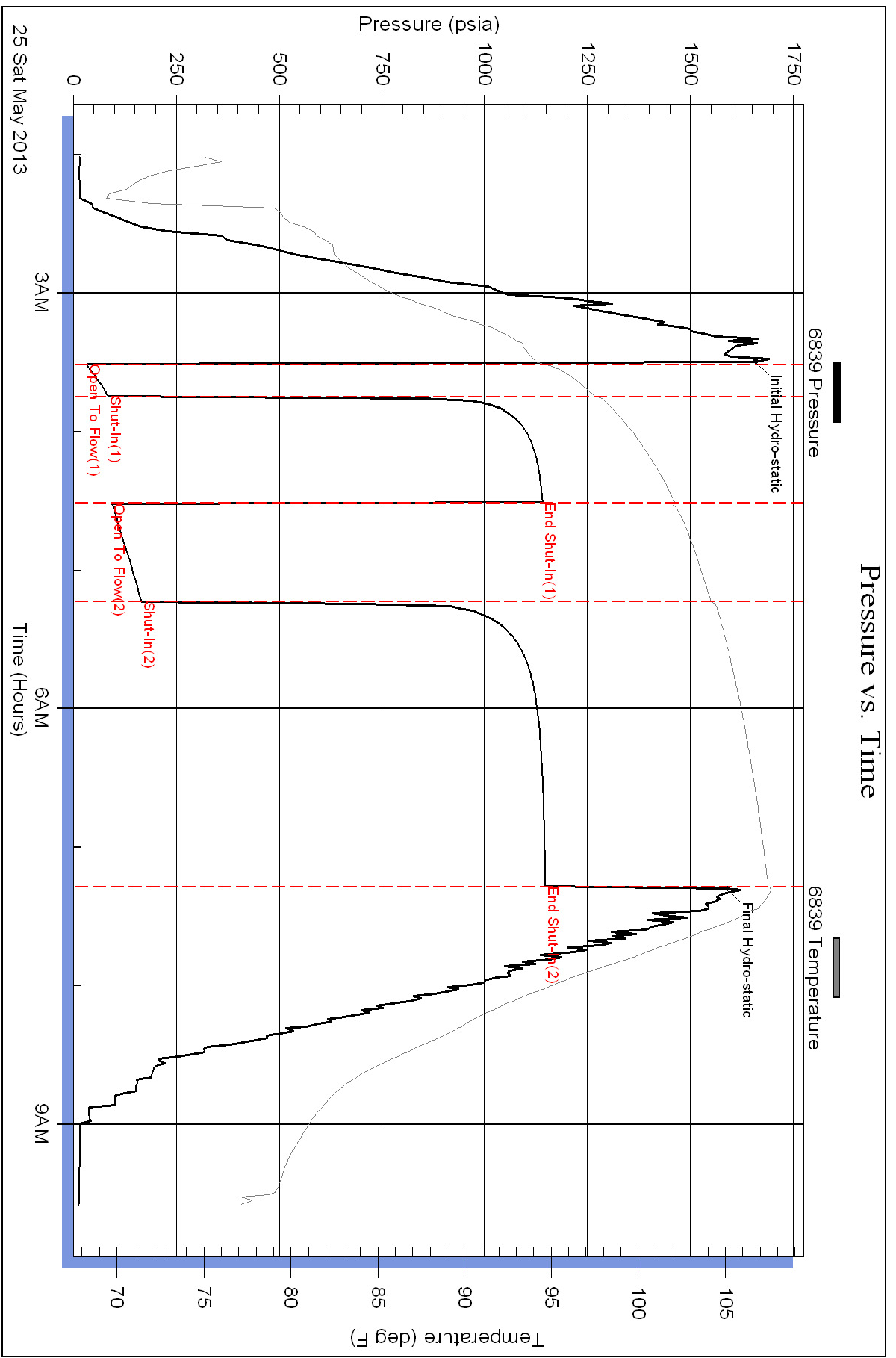
Serial #: 6839

Inside

Shelby Resources

Schlessiger Cattle

DST Test Number: 5



Superior Testers Enterprises LLC

Ref. No: 18382

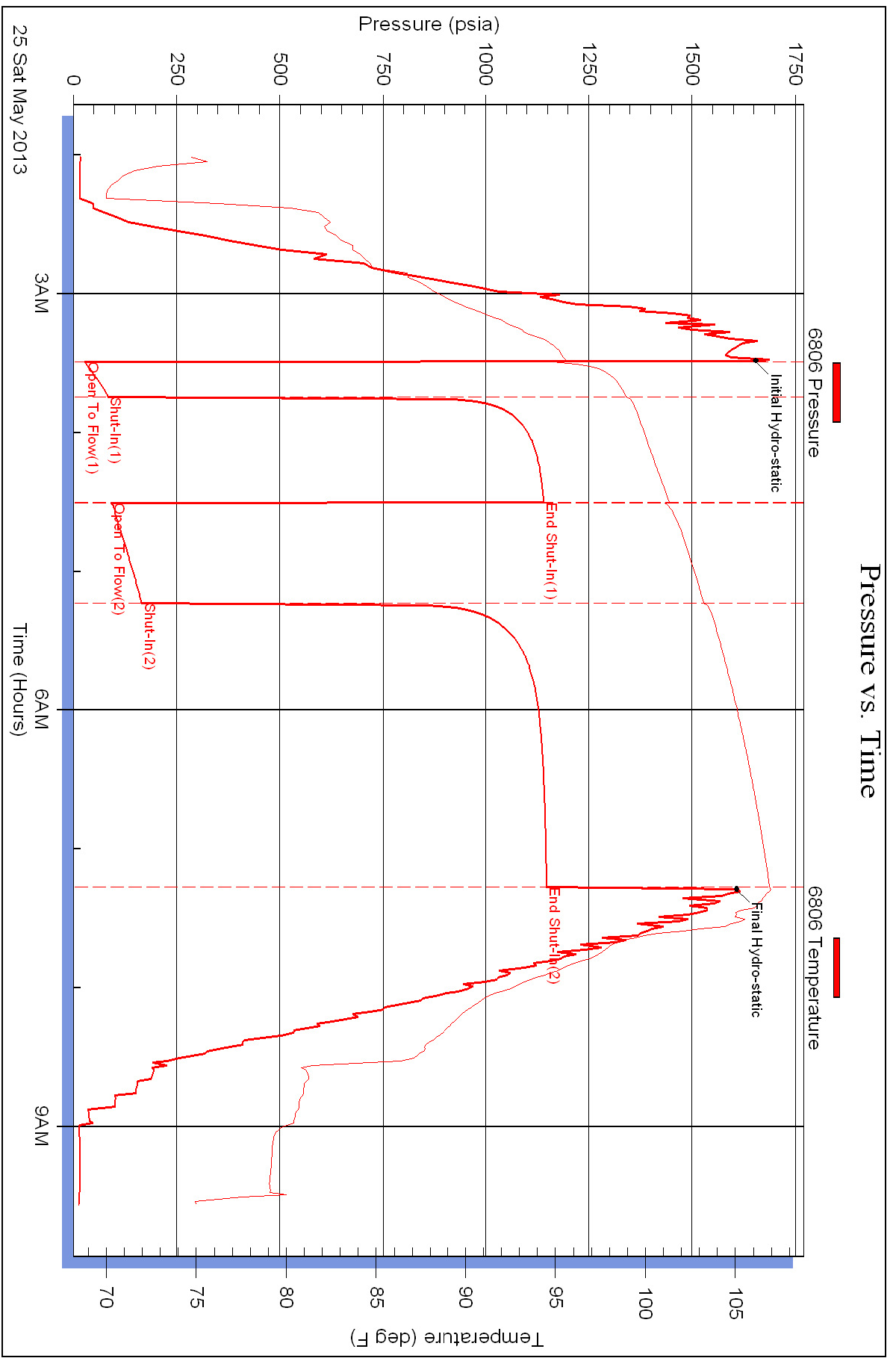
Printed: 2013.05.25 @ 10:00:12

Serial #: 6806

Outside Shelby Resources

Schlessiger Cattle

DST Test Number: 5



Superior Testers Enterprises LLC

Ref. No: 18382

Printed: 2013.05.25 @ 10:00:12