



DRILL STEM TEST REPORT

Prepared For: **Shelby Resources LLC**

2717 Canal Blvd
Suite C
Hays, Kansas 67601

ATTN: Jeremy Schwartz

S-B Unit #1-21

21/18S/14W/Barton

Start Date: 2013.05.14 @ 07:12:00

End Date: 2013.05.14 @ 12:15:00

Job Ticket #: 17489 DST #: 1

Superior Testers Enterprises LLC
PO Box 138 Great Bend KS 67530
1-800-792-6902

Printed: 2013.05.14 @ 12:42:54



DRILL STEM TEST REPORT

Shelby Resources LLC
 2717 Canal Blvd
 Suite C
 Hays, Kansas 67601
 ATTN: Jeremy Schwartz

21/18S/14W/Barton

S-B Unit #1-21

Job Ticket: 17489

DST#: 1

Test Start: 2013.05.14 @ 07:12:00

GENERAL INFORMATION:

Formation: **Lansing/Kansas City**

Deviated: No Whipstock: ft (KB)

Time Tool Opened: 08:54:30

Time Test Ended: 12:15:00

Test Type: Conventional Bottom Hole (Initial)

Tester: Ken Swinney

Unit No: 3325 Great Bend/20

Interval: 3265.00 ft (KB) To 3352.00 ft (KB) (TVD)

Reference Elevations: 1934.00 ft (KB)

Total Depth: 3352.00 ft (KB) (TVD)

1925.00 ft (CF)

Hole Diameter: 7.80 inches Hole Condition: Fair

KB to GR/CF: 9.00 ft

Serial #: 6749

Inside

Press @ Run Depth: 115.70 psia @ 3348.23 ft (KB)

Capacity: 5000.00 psia

Start Date: 2013.05.14

End Date: 2013.05.14

Last Calib.: 2013.05.14

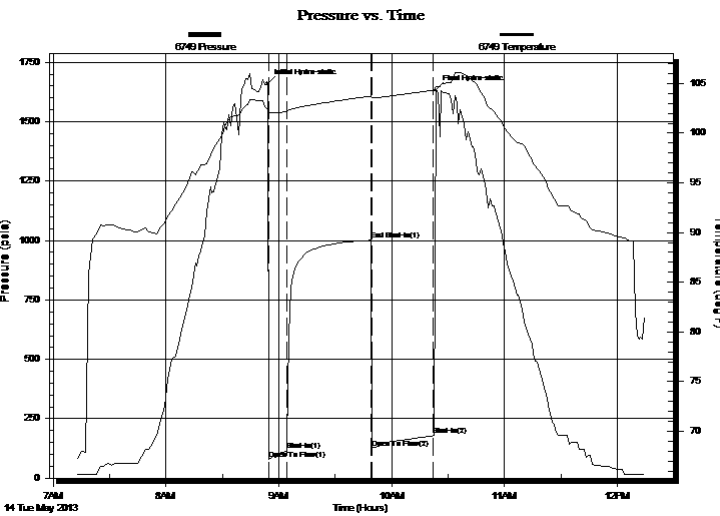
Start Time: 07:12:00

End Time: 12:15:00

Time On Btm: 2013.05.14 @ 08:54:00

Time Off Btm: 2013.05.14 @ 10:23:30

TEST COMMENT: 1ST Open 10 Minutes/Weak blow/Blow built to 1/2 inch then died to 1/4 inch
 1ST Shut In 45 Minutes/No blow back
 2ND Open 33 Minutes/Weak blow/Blow built to 1/4 inch then died in 15 minutes



PRESSURE SUMMARY

Time (Min.)	Pressure (psia)	Temp (deg F)	Annotation
0	1661.08	102.47	Initial Hydro-static
1	77.73	102.10	Open To Flow (1)
10	115.70	102.16	Shut-In(1)
55	1001.03	103.74	End Shut-In(1)
56	125.68	103.53	Open To Flow (2)
88	178.60	104.30	Shut-In(2)
90	1634.22	104.66	Final Hydro-static

Recovery

Length (ft)	Description	Volume (bbl)
240.00	Muddy Water with show of oil	1.73
0.00	Mud 10% Water 90%	0.00
0.00	Recov. Chlorides 61,000 ppm	0.00
0.00	Recov. Resist. .18 ohms @ 84 deg	0.00

Gas Rates

Choke (inches)	Pressure (psia)	Gas Rate (Mcf/d)



DRILL STEM TEST REPORT

Shelby Resources LLC
 2717 Canal Blvd
 Suite C
 Hays, Kansas 67601
 ATTN: Jeremy Schwartz

21/18S/14W/Barton

S-B Unit #1-21

Job Ticket: 17489

DST#: 1

Test Start: 2013.05.14 @ 07:12:00

GENERAL INFORMATION:

Formation: **Lansing/Kansas City**

Deviated: No Whipstock: ft (KB)

Time Tool Opened: 08:54:30

Time Test Ended: 12:15:00

Test Type: Conventional Bottom Hole (Initial)

Tester: Ken Swinney

Unit No: 3325 Great Bend/20

Interval: **3265.00 ft (KB) To 3352.00 ft (KB) (TVD)**

Reference Elevations: 1934.00 ft (KB)

Total Depth: 3352.00 ft (KB) (TVD)

1925.00 ft (CF)

Hole Diameter: 7.80 inches Hole Condition: Fair

KB to GR/CF: 9.00 ft

Serial #: **6838** Outside

Press @ Run Depth: 1002.09 psia @ 3349.23 ft (KB)

Capacity: 5000.00 psia

Start Date: 2013.05.14

End Date: 2013.05.14

Last Calib.: 2013.05.14

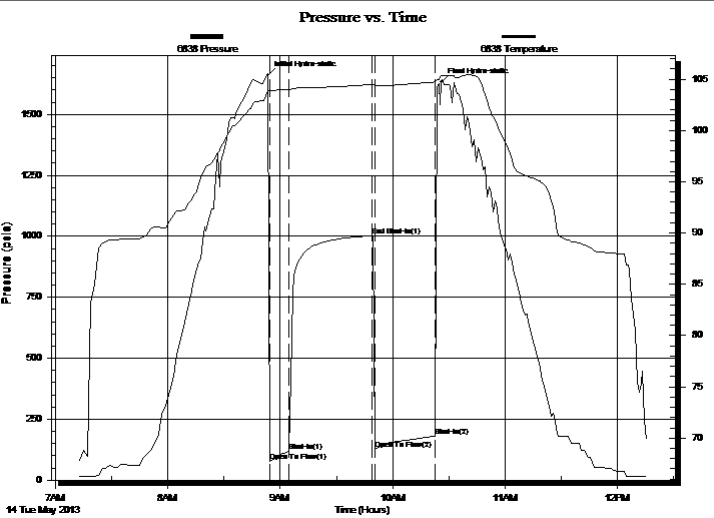
Start Time: 07:12:00

End Time: 12:15:30

Time On Btm: 2013.05.14 @ 08:53:30

Time Off Btm: 2013.05.14 @ 10:26:00

TEST COMMENT: 1ST Open 10 Minutes/Weak blow/Blow built to 1/2 inch then died to 1/4 inch
 1ST Shut In 45 Minutes/No blow back
 2ND Open 33 Minutes/Weak blow/Blow built to 1/4 inch then died in 15 minutes



PRESSURE SUMMARY

Time (Min.)	Pressure (psia)	Temp (deg F)	Annotation
0	1660.55	103.87	Initial Hydro-static
1	75.49	103.81	Open To Flow (1)
11	117.92	103.98	Shut-In(1)
56	1002.09	104.49	End Shut-In(1)
57	127.81	104.36	Open To Flow (2)
89	180.43	104.75	Shut-In(2)
93	1630.28	105.33	Final Hydro-static

Recovery

Length (ft)	Description	Volume (bbl)
240.00	Muddy Water with show of oil	1.73
0.00	Mud 10% Water 90%	0.00
0.00	Recov. Chlorides 61,000 ppm	0.00
0.00	Recov. Resist. .18 ohms @ 84 deg	0.00

Gas Rates

Choke (inches)	Pressure (psia)	Gas Rate (Mcf/d)



DRILL STEM TEST REPORT

TOOL DIAGRAM

Shelby Resources LLC
 2717 Canal Blvd
 Suite C
 Hays, Kansas 67601
 ATTN: Jeremy Schwartz

21/18S/14W/Barton
S-B Unit #1-21
 Job Ticket: 17489 **DST#: 1**
 Test Start: 2013.05.14 @ 07:12:00

Tool Information

Drill Pipe:	Length: 3085.00 ft	Diameter: 3.80 inches	Volume: 43.27 bbl	Tool Weight: 2000.00 lb
Heavy Wt. Pipe:	Length: 0.00 ft	Diameter: 0.00 inches	Volume: 0.00 bbl	Weight set on Packer: 20000.00 lb
Drill Collar:	Length: 180.00 ft	Diameter: 2.25 inches	Volume: 0.89 bbl	Weight to Pull Loose: 90000.00 lb
			<u>Total Volume: 44.16 bbl</u>	Tool Chased 0.00 ft
Drill Pipe Above KB:	27.00 ft			String Weight: Initial 69000.00 lb
Depth to Top Packer:	3265.00 ft			Final 69000.00 lb
Depth to Bottom Packer:	ft			
Interval between Packers:	87.23 ft			
Tool Length:	114.23 ft			
Number of Packers:	2	Diameter: 6.75 inches		

Tool Comments:

Tool Description	Length (ft)	Serial No.	Position	Depth (ft)	Accum. Lengths
-------------------------	--------------------	-------------------	-----------------	-------------------	-----------------------

Shut In Tool	5.00			3243.00	
Hydraulic Tool	5.00			3248.00	
Jars	5.00			3253.00	
Safety Joint	2.00			3255.00	
Packer	5.00			3260.00	27.00 Bottom Of Top Packer
Packer	5.00			3265.00	
Perforations	2.00			3267.00	
Change Over Sub	0.75			3267.75	
Drill Pipe	63.73			3331.48	
Change Over Sub	0.75			3332.23	
Anchor	15.00			3347.23	
Recorder	1.00	6749	Inside	3348.23	
Recorder	1.00	6838	Outside	3349.23	
Bullnose	3.00			3352.23	87.23 Bottom Packers & Anchor

Total Tool Length: 114.23



DRILL STEM TEST REPORT

FLUID SUMMARY

Shelby Resources LLC

21/18S/14W/Barton

2717 Canal Blvd
Suite C
Hays, Kansas 67601
ATTN: Jeremy Schwartz

S-B Unit #1-21

Job Ticket: 17489

DST#: 1

Test Start: 2013.05.14 @ 07:12:00

Mud and Cushion Information

Mud Type: Gel Chem
Mud Weight: 9.00 lb/gal
Viscosity: 54.00 sec/qt
Water Loss: 7.99 in³
Resistivity: ohm.m
Salinity: 5000.00 ppm
Filter Cake: 1.00 inches

Cushion Type:
Cushion Length: ft
Cushion Volume: bbl
Gas Cushion Type:
Gas Cushion Pressure: psia

Oil API: deg API
Water Salinity: ppm

Recovery Information

Recovery Table

Length ft	Description	Volume bbl
240.00	Muddy Water with show of oil	1.727
0.00	Mud 10% Water 90%	0.000
0.00	Recov. Chlorides 61,000 ppm	0.000
0.00	Recov. Resist. .18 ohms @ 84 deg	0.000

Total Length: 240.00 ft Total Volume: 1.727 bbl

Num Fluid Samples: 0

Num Gas Bombs: 0

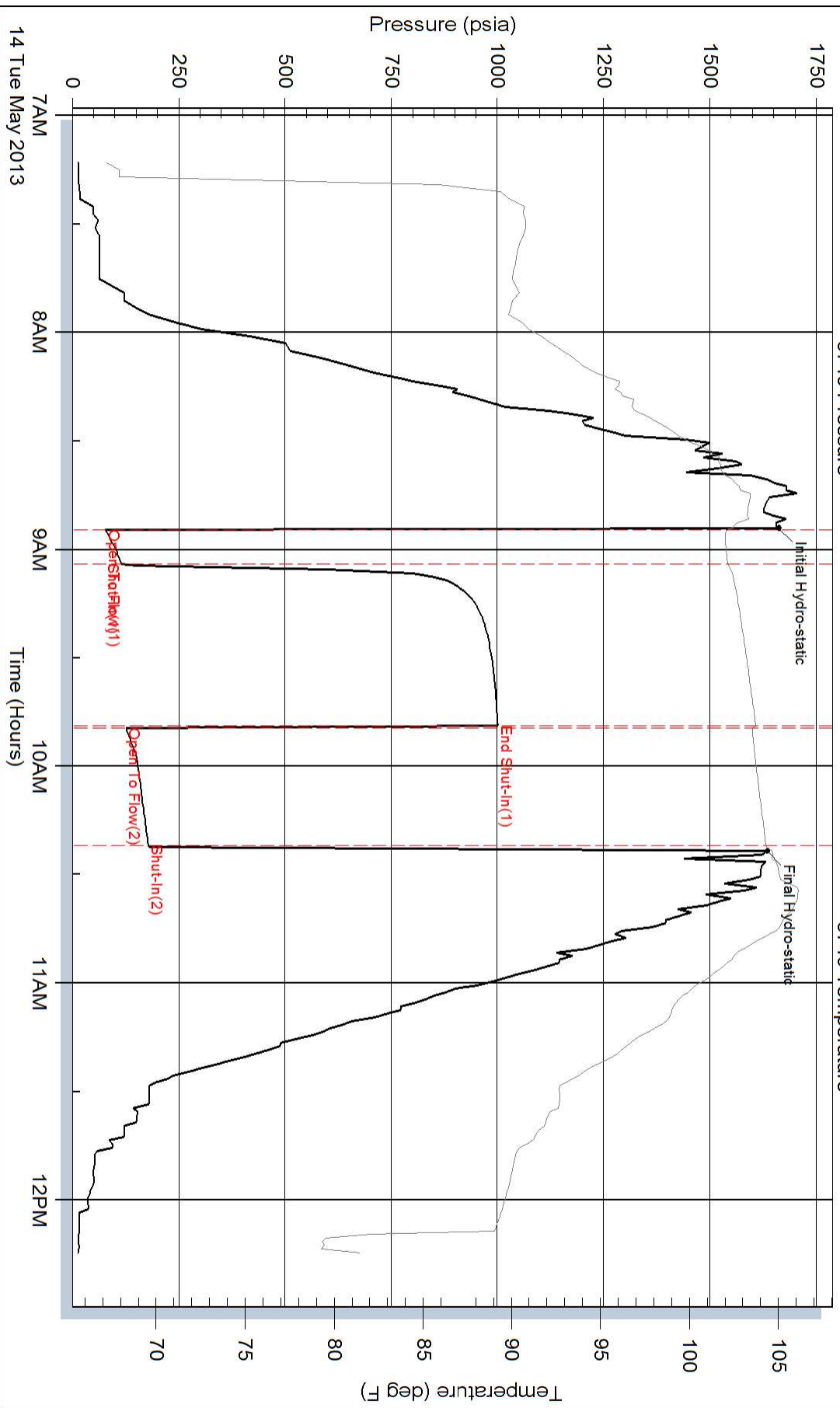
Serial #:

Laboratory Name:

Laboratory Location:

Recovery Comments:

Pressure vs. Time



Pressure vs. Time

