



## DRILL STEM TEST REPORT

Prepared For: **Shelby Resources LLC**

2717 Canal Blvd Suite C  
Hays Ks, 67601

ATTN: Jeremy Schwartz

**K-F Unit #1-34**

**34/17s/14w/Barton**

Start Date: 2013.08.29 @ 10:25:00

End Date: 2013.08.29 @ 15:35:00

Job Ticket #: 18487                      DST #: 2

Superior Testers Enterprises LLC  
PO Box 138 Great Bend KS 67530  
1-800-792-6902

Printed: 2013.08.29 @ 15:50:53



# DRILL STEM TEST REPORT

Shelby Resources LLC  
 2717 Canal Blvd Suite C  
 Hays Ks, 67601  
 ATTN: Jeremy Schwartz

**34/17s/14w/Barton**  
**K-F Unit #1-34**  
 Job Ticket: 18487      **DST#: 2**  
 Test Start: 2013.08.29 @ 10:25:00

## GENERAL INFORMATION:

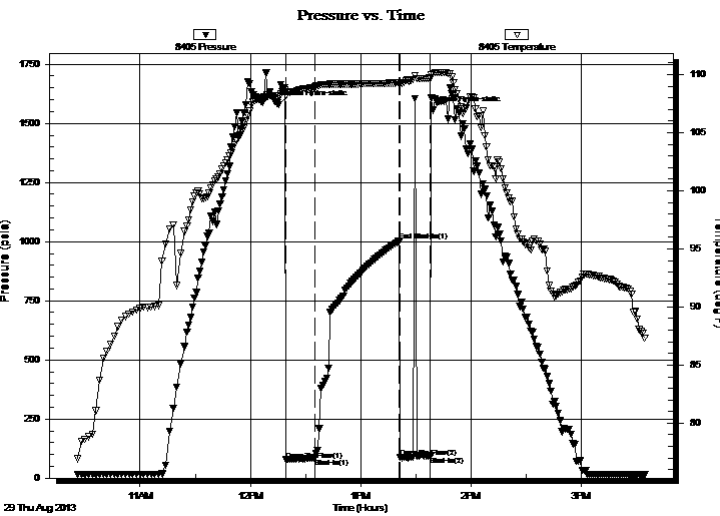
Formation: **LKC "H-K"**  
 Deviated: No Whipstock: ft (KB)  
 Time Tool Opened: 12:19:30  
 Time Test Ended: 15:35:00  
 Interval: **3228.00 ft (KB) To 3315.00 ft (KB) (TVD)**  
 Total Depth: 3315.00 ft (KB) (TVD)  
 Hole Diameter: 7.88 inches Hole Condition: Fair  
 Test Type: Conventional Bottom Hole (Initial)  
 Tester: Shane Konzem  
 Unit No: 3330/28/Great Bend  
 Reference Elevations: 1856.00 ft (KB)  
 1843.00 ft (CF)  
 KB to GR/CF: 13.00 ft

## Serial #: 8405

Inside

Press @ RunDepth: 84.23 psia @ 3311.22 ft (KB) Capacity: 5000.00 psia  
 Start Date: 2013.08.29 End Date: 2013.08.29 Last Calib.: 2013.08.29  
 Start Time: 10:25:00 End Time: 15:35:00 Time On Btm: 2013.08.29 @ 12:15:30  
 Time Off Btm: 2013.08.29 @ 13:39:30

TEST COMMENT: 1st Open/ 15 Minutes. Weak blow built to 1/4 inch in 5 gallon bucket.  
 1st Shut In/ 45 Minutes. No blow back.  
 2nd Open/ 15 Minutes. No blow, flushed tool and gained no blow. Pulled test per geo.  
 2nd Shut In/ N/A



## PRESSURE SUMMARY

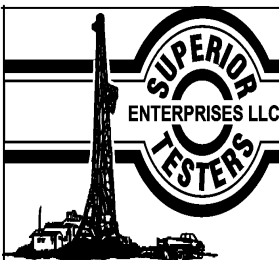
Time (Min.)	Pressure (psia)	Temp (deg F)	Annotation
0	1579.98	108.17	Initial Hydro-static
4	77.72	108.24	Open To Flow (1)
20	84.23	108.93	Shut-In(1)
66	1003.29	109.29	End Shut-In(1)
66	87.55	109.12	Open To Flow (2)
83	91.60	109.68	Shut-In(2)
84	1555.85	110.08	Final Hydro-static

## Recovery

Length (ft)	Description	Volume (bbl)
0.00	No gas	0.00
20.00	100% Mud	0.10

## Gas Rates

	Choke (inches)	Pressure (psia)	Gas Rate (Mcf/d)



# DRILL STEM TEST REPORT

Shelby Resources LLC  
 2717 Canal Blvd Suite C  
 Hays Ks, 67601  
 ATTN: Jeremy Schwartz

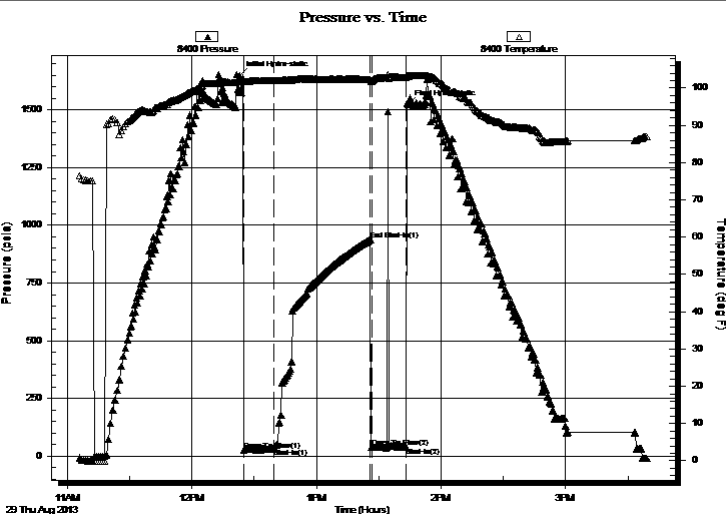
**34/17s/14w/Barton**  
**K-F Unit #1-34**  
 Job Ticket: 18487 **DST#: 2**  
 Test Start: 2013.08.29 @ 10:25:00

## GENERAL INFORMATION:

Formation: **LKC "H-K"**  
 Deviated: No Whipstock: ft (KB)  
 Time Tool Opened: 12:19:30  
 Time Test Ended: 15:35:00  
**Interval: 3228.00 ft (KB) To 3315.00 ft (KB) (TVD)**  
 Total Depth: 3315.00 ft (KB) (TVD)  
 Hole Diameter: 7.88 inches Hole Condition: Fair  
 Test Type: Conventional Bottom Hole (Initial)  
 Tester: Shane Konzem  
 Unit No: 3330/28/Great Bend  
 Reference Elevations: 1856.00 ft (KB)  
 1843.00 ft (CF)  
 KB to GR/CF: 13.00 ft

**Serial #: 8400 Outside**  
 Press @ RunDepth: 938.20 psia @ 3312.22 ft (KB)  
 Capacity: 5000.00 psia  
 Start Date: 2013.08.29 End Date: 2013.08.29 Last Calib.: 2013.08.29  
 Start Time: 10:25:00 End Time: 15:39:00 Time On Btm: 2013.08.29 @ 12:23:00  
 Time Off Btm: 2013.08.29 @ 13:44:00

**TEST COMMENT:** 1st Open/ 15 Minutes. Weak blow built to 1/4 inch in 5 gallon bucket.  
 1st Shut In/ 45 Minutes. No blow back.  
 2nd Open/ 15 Minutes. No blow , flushed tool and gained no blow . Pulled test per geo.  
 2nd Shut In/ N/A



## PRESSURE SUMMARY

Time (Min.)	Pressure (psia)	Temp (deg F)	Annotation
0	1647.41	101.91	Initial Hydro-static
2	27.24	101.67	Open To Flow (1)
17	33.39	101.97	Shut-In(1)
64	938.20	102.31	End Shut-In(1)
64	39.02	101.79	Open To Flow (2)
80	40.44	102.84	Shut-In(2)
81	1522.81	103.24	Final Hydro-static

## Recovery

Length (ft)	Description	Volume (bbl)
0.00	No gas	0.00
20.00	100% Mud	0.10

## Gas Rates

Choke (inches)	Pressure (psia)	Gas Rate (Mcf/d)



# DRILL STEM TEST REPORT

**TOOL DIAGRAM**

Shelby Resources LLC

**34/17s/14w/Barton**

2717 Canal Blvd Suite C  
Hays Ks, 67601

**K-F Unit #1-34**

Job Ticket: 18487

**DST#: 2**

ATTN: Jeremy Schwartz

Test Start: 2013.08.29 @ 10:25:00

## Tool Information

Drill Pipe:	Length: 2877.00 ft	Diameter: 3.80 inches	Volume: 40.36 bbl	Tool Weight: 2000.00 lb
Heavy Wt. Pipe:	Length: 0.00 ft	Diameter: 0.00 inches	Volume: 0.00 bbl	Weight set on Packer: 20000.00 lb
Drill Collar:	Length: 329.68 ft	Diameter: 2.25 inches	Volume: 1.62 bbl	Weight to Pull Loose: 75000.00 lb
			<u>Total Volume: 41.98 bbl</u>	Tool Chased 1.00 ft
Drill Pipe Above KB:	7.68 ft			String Weight: Initial 66000.00 lb
Depth to Top Packer:	3228.00 ft			Final 66000.00 lb
Depth to Bottom Packer:	ft			
Interval between Packers:	87.22 ft			
Tool Length:	116.22 ft			
Number of Packers:	2	Diameter: 6.75 inches		

Tool Comments:

Tool Description	Length (ft)	Serial No.	Position	Depth (ft)	Accum. Lengths
Change Over Sub	1.00			3200.00	
Shut-In Tool	5.00			3205.00	
Hydroic Tool	5.00			3210.00	
Jars	6.00			3216.00	
Safety Joint	2.00			3218.00	
Packer	5.00			3223.00	29.00 Bottom Of Top Packer
Packer	5.00			3228.00	
Perforations	5.00			3233.00	
Change Over Sub	0.75			3233.75	
Drill Pipe	63.72			3297.47	
Change Over Sub	0.75			3298.22	
Perforations	12.00			3310.22	
Recorder	1.00	8405	Inside	3311.22	
Recorder	1.00	8400	Outside	3312.22	
Bullnose	3.00			3315.22	87.22 Bottom Packers & Anchor

**Total Tool Length: 116.22**



# DRILL STEM TEST REPORT

## FLUID SUMMARY

Shelby Resources LLC

**34/17s/14w/Barton**

2717 Canal Blvd Suite C  
Hays Ks, 67601

**K-F Unit #1-34**

Job Ticket: 18487

**DST#: 2**

ATTN: Jeremy Schwartz

Test Start: 2013.08.29 @ 10:25:00

### Mud and Cushion Information

Mud Type: Gel Chem  
Mud Weight: 9.00 lb/gal  
Viscosity: 60.00 sec/qt  
Water Loss: 10.20 in<sup>3</sup>  
Resistivity: ohm.m  
Salinity: 8400.00 ppm  
Filter Cake: 1.00 inches

Cushion Type:  
Cushion Length: ft  
Cushion Volume: bbl  
Gas Cushion Type:  
Gas Cushion Pressure: psia

Oil API: deg API  
Water Salinity: ppm

### Recovery Information

Recovery Table

Length ft	Description	Volume bbl
0.00	No gas	0.000
20.00	100% Mud	0.098

Total Length: 20.00 ft      Total Volume: 0.098 bbl

Num Fluid Samples: 0

Num Gas Bombs: 0

Serial #:

Laboratory Name:

Laboratory Location:

Recovery Comments:

