



Woolsey Operating Company, LLC

Scale 1:240 (5"=100') Imperial

Measured Depth Log

Well Name: TUCKER GU A-6
Location: APPROX NW NE NW
License Number: API: 15-007-24027-00-00
Spud Date: May 28, 2013
Surface Coordinates: Section 28-T33S-R10W, 330' FNL, 1690' FWL
Traffas
Bottom Hole Vertical Hole
Coordinates:
Ground Elevation (ft): 1456 K.B. Elevation (ft): 1468
Logged Interval (ft): 4000 To: RTD Total Depth (ft): 5092
Formation: McLish Shale
Type of Drilling Fluid: Chemical Mud, Displace at 3382'.
Region: Barber County, Kansas
Drilling Completed: June 6, 2013

Printed by WellSight Log Viewer from WellSight Systems 1-800-447-1534 www.WellSight.com

OPERATOR

Company: Woolsey Operating Company, LLC
Address: 125 N. Market, Suite 1000
Wichita, KS 67202

GEOLOGIST

Name: W. Scott Alberg
Company: Alberg Petroleum, LLC
Address: 609 Meadowlark Lane
Pratt, Kansas 67124

FORMATION TOPS

	SAMPLE TOPS	LOG TOPS
STARK SHALE	4276(-2808)	4270(-2802)
HUSHPUCKNEY SHALE	4309(-2841)	4302(-2834)
B/KC	4363(-2895)	4359(-2891)
PAWNEE	4450(-2982)	4446(-2978)
MISSISSIPPIAN	4544(-3076)	4545(-3075)
KINDERHOOK SHALE	4792(-3324)	4797(-3329)
WOODFORD SHALE	4862(-3394)	4858(-3390)
VIOLA	4902(-3434)	4902(-3434)
SIMPSON SHALE	4985(-3517)	4985(-3517)
SIMPSON SAND	5003(-3535)	5001(-3533)
MCLISH SHALE	5062(-3594)	5059(-3591)
RTD	5092(-3624)	
LTD		5088(-3620)

COMMENTS

Surface Casing: Set 5 joints 10 3/4" at 217' with 200 sxs Class A, 2% gel, 3% cc, 1/4# Celoflake, plug down at 3:15 am on May 29, 2013. Cement did Circulate.

Production Casing: None

Deviation Surveys: 1 - 217', 3/4 - 715', 3/4 - 1222'. 1/2 - 1734', 1/2 - 2243', 1/2 - 2783, 1/2 - 3257', 3/4 - 3732', 3/4 - 4236', 1 1/4 - 4580', 3 - 5092'.

Contractor Bit Record:

1- 14 3/4" out at 217'.

2- 7 7/8" out at 4580'.

3- 7 7/8" out at 5092'.

Pipe Strap at

Board 4580.00

Strap 4583.94

Long 3.94'

Gas Detector: Woolsey Operating Company, Trailer #1

Mud System: Mud Co, Brad Bortz, Terry Ison, Engineers

DSTs: Trilobite Testing, Ryan Reynolds

Logged by Nabors Completion and Production Services

LTD - 5088'.

DSTs

DST #1 4468-4580 Mississippi

Times 30-60-60-120

1st Opening - weak 2 inch blow, no blow back

2nd Opening- weak surface blow, died 25 minutes, no blow back.

Recovery: 225' Drilling Mud.

IFP 118-126# FFP 122-127#

ISIP 397# FSIP 449#

IHP 2194# FHP 2120#

Temp 119

Note: Tool slid 30' to bottom.

CREWS

Fossil Drilling, Inc Rig #3

Tool Pusher - Jim Wenrich

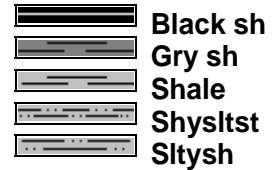
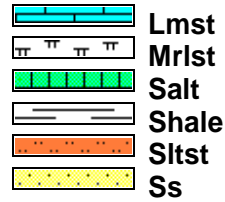
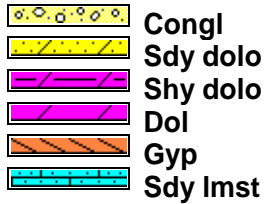
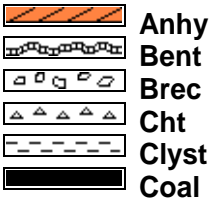
Drillers - Days - Daniel Orranta

Evening - Ed Raney

Morning - Andres Maestas

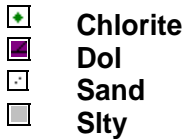
Relief - Allen Collins

ROCK TYPES

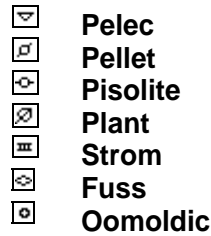
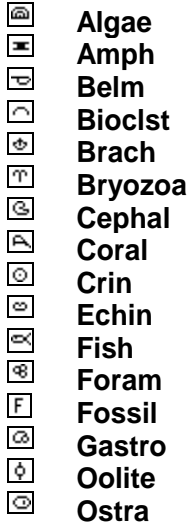


ACCESSORIES

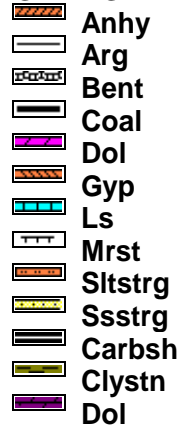
MINERAL



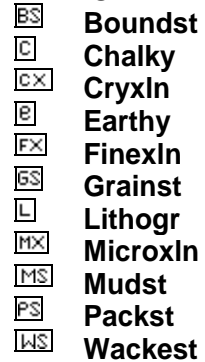
FOSSIL

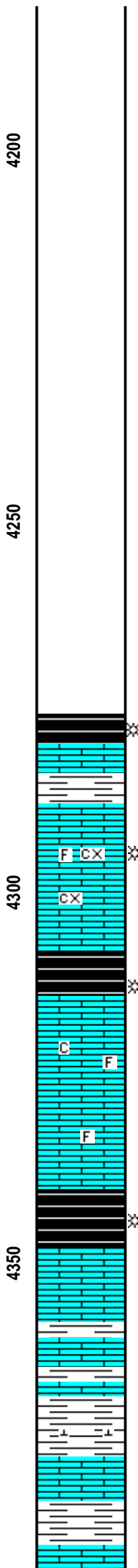
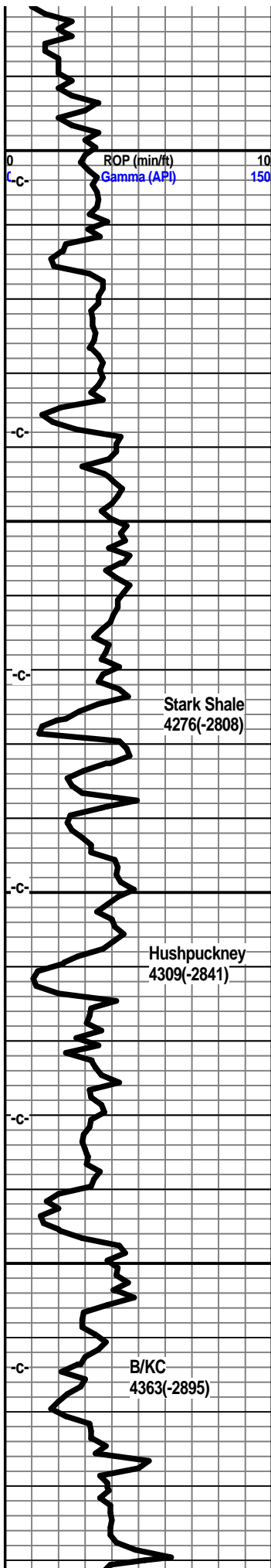


STRINGER



TEXTURE





Shale, grey-black.

Limestone, tan, tan-white, crystalline, trace crystalline porosity, trace fossils, very faint odor, slight possible gas indication, no visible shows of oil or gas, no fluorescence.

Shale, grey-black, trace gas bubbles.

Limestone, creamy, tan, white, crystalline, trace fossils, dense, subchalky, no visible shows.

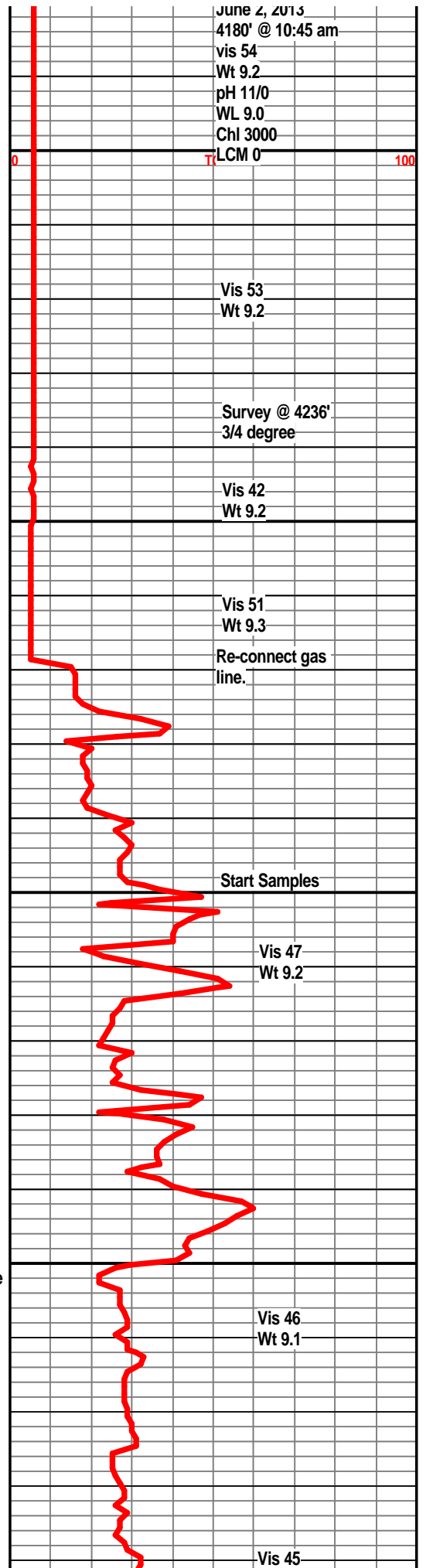
Shale, grey-black.

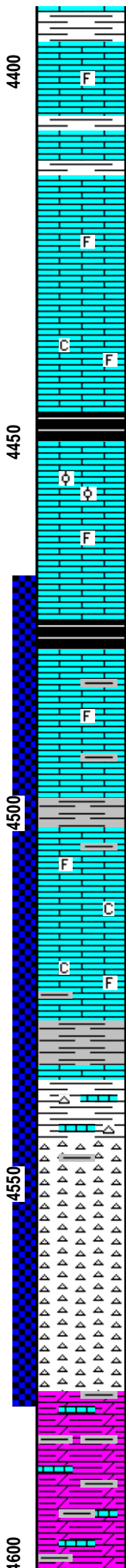
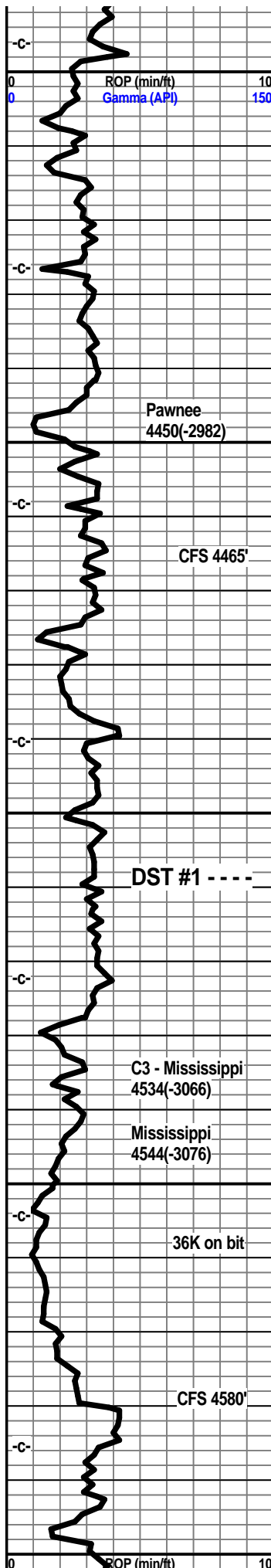
Limestone, tan, brown, crystalline, dense, trace fossils, trace tan chert, no visible shows.

Shale, grey, light grey-green, some pale green. calcitic.

Limestone, cream, pale green, crystalline, dense.

Shale, light grey, pale green.





Limestone, cream, tan, crystalline, trace fossils, dense.

Shale, light grey.

Limestone, tan, buff, crystalline, dense, trace fossils, no visible shows.

Limestone, tan, buff-white, crystalline, trace fossils, subchalky in part, no visible shows.

Shale, grey-black, trace gas bubbles.

Limestone, tan, cream-white, buff, crystalline, partly dense, traces micro oolite, trace fossils, trace crystalline porosity, very faint odor, spotty dull fluor, gas indication, no visible shows of free oil or gas.

Shale, grey-black.

Limestone, tan, grey-white, crystalline, dense, trace of fossils, shaley in part.

Shale, dark grey, grey.

Limestone, cream, tan, crystalline, shaley in part, subchalky, trace fossils.

Limestone, tan, grey-white, dense, crystalline, trace fossils.

Shale, grey

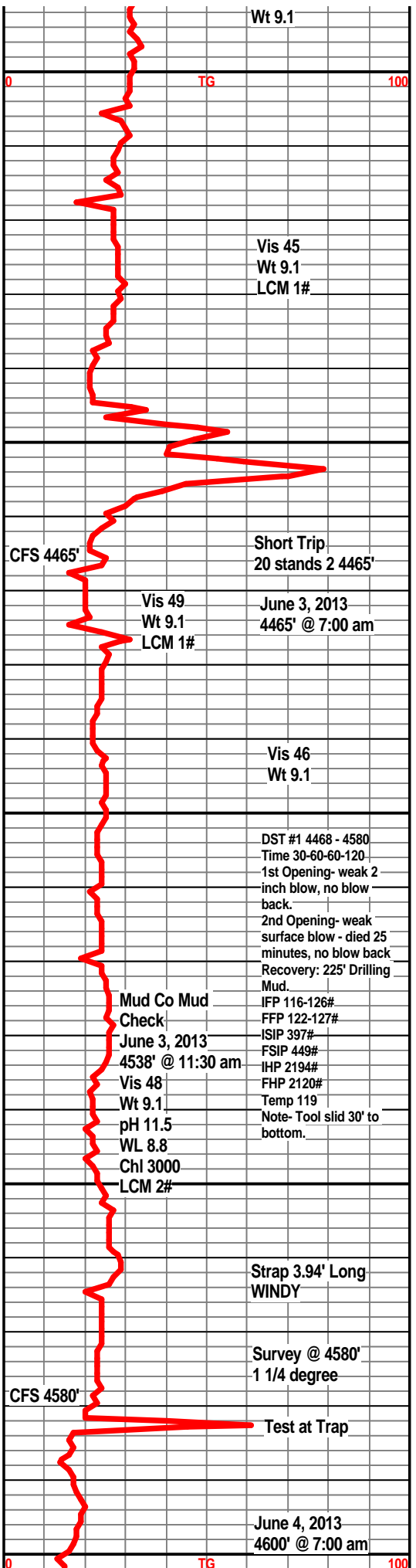
Limestone, tan, dense, trace fossils.

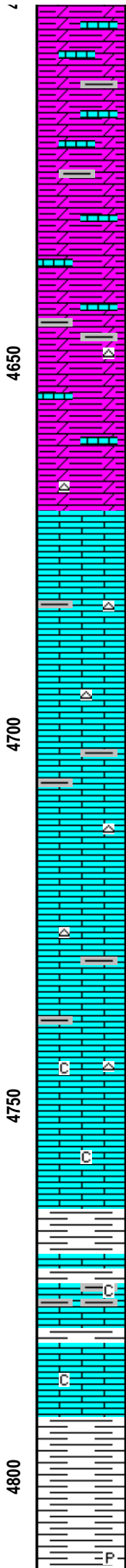
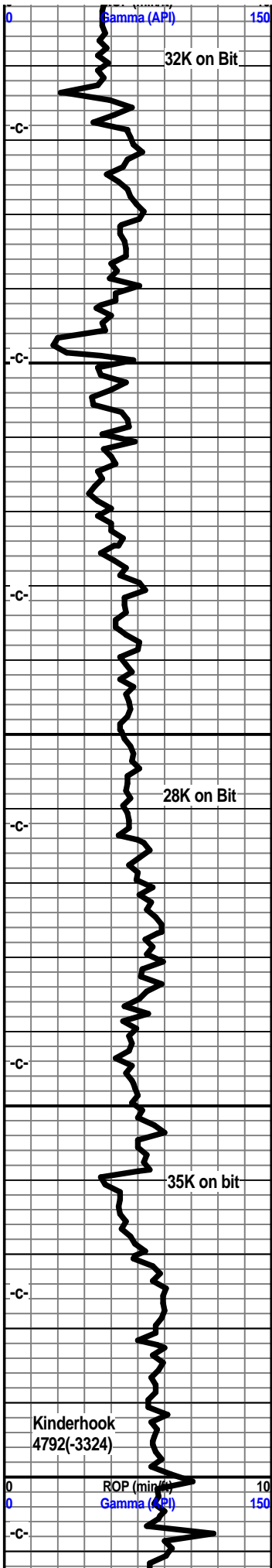
Shale, grey-green, some vari-colored shales, yellow, maroon, salmon, few pieces green chert, trace ls fragments.

Chert, white to off-white, fresh, sharp, trace weathered, very poor to no visible porosity on weathered pieces, questionable scattered light stain, no odor, no visible shows of oil or gas, trace dull spotty fluor.. shaley in part.

Chert, white to off-white, some pale green, sharp, fresh, trace weathered, poor porosity, no odor, no visible shows oil or gas, very small gas indication, trace dolomite in 60 sample, shaley in part.

Dolo, tan, cream, granular, abundant ls fragments, shale, vari-colored, yellow, grey-green, ect, traces of fresh chert, sharp, no visible shows, no odor.





Dolo, tan, cream, dense, granular, chalky tan-white limestone, shales, vari-colored.

Dolo, tan, cream-white, crystalline, dense, abundant limestone, chalky, vari-colored shales.

Dolo, tan, crystalline, abundant limestone, tan, cream, subchalky, crystalline, trace white chert, no visible shows.

Dolo, tan, dense, abundant tan, cream limestone, crystalline, subchalky, grey-green splintery shales.

Dolo, tan, granular, abundant cream tan limestone, subchalky, dense, grey-green shales, trace bone white sharp cherts.

Limestone, cream, tan, crystalline, dense, subchalky, trace off-white cherts, grey-green shales.

Limestone, tan, cream, pale green, crystalline, shaley in part, trace bone-white chert, grey green shales, some vari-colored.

Limestone, cream, tan, crystalline, dense, some pale green, subchalky in part.

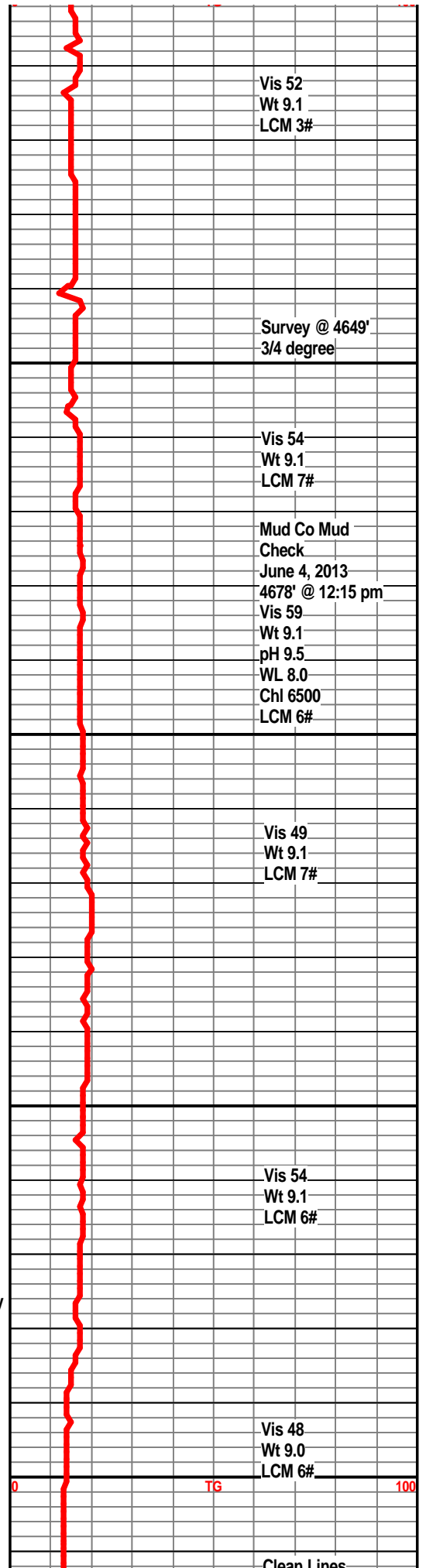
Limestone, cream, pale green, dense, crystalline, subchalky, no visible shows.

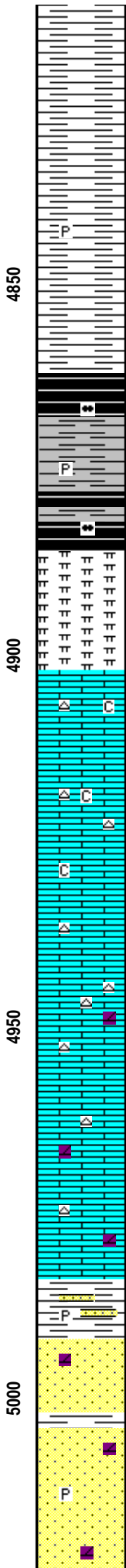
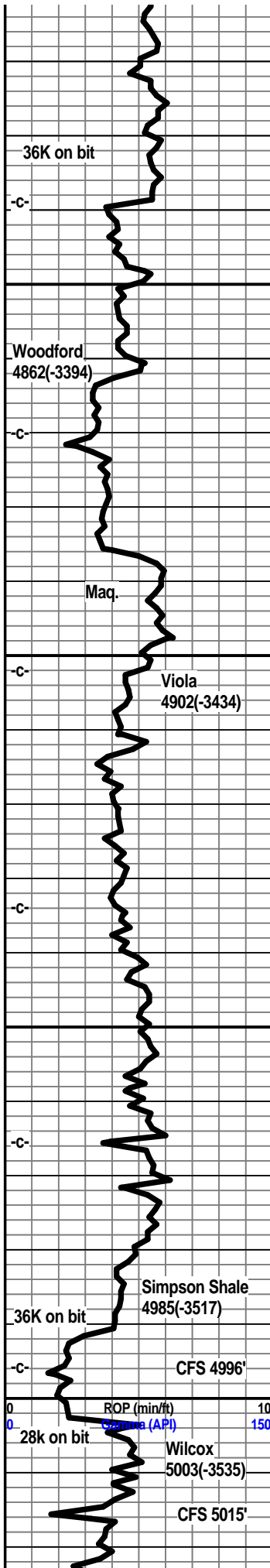
Shale, pale green-grey, calcitic.

Limestone, cream, tan crystalline dense, shaley in part.

Limestone, cream, tan, crystalline, subchalky, no visible shows.

Shale, grey, dark grey, silty, trace pyrite.





Shale, dark grey, grey, firm, blocky, traces of pyrite.

Shale, grey, dark grey, silty, firm, blocky.

Shale, grey-black, spores, trace gas bubbles.

Shale, grey-black, firm, trace pyrite.

Shale, grey-black, firm, spores, trace gas bubbles.

Dolo, grey-white, fine grained, silty, no visible shows.

Limestone, tan-white, cream-white, crystalline, dense, chalky in part, trace chert, no visible shows.

Limestone, tan, cream-white, crystalline, traces tan sharp cherts, chalky in part, no visible shows.

Limestone, tan, grey-white, crystalline, tan sharp cherts, no visible shows.

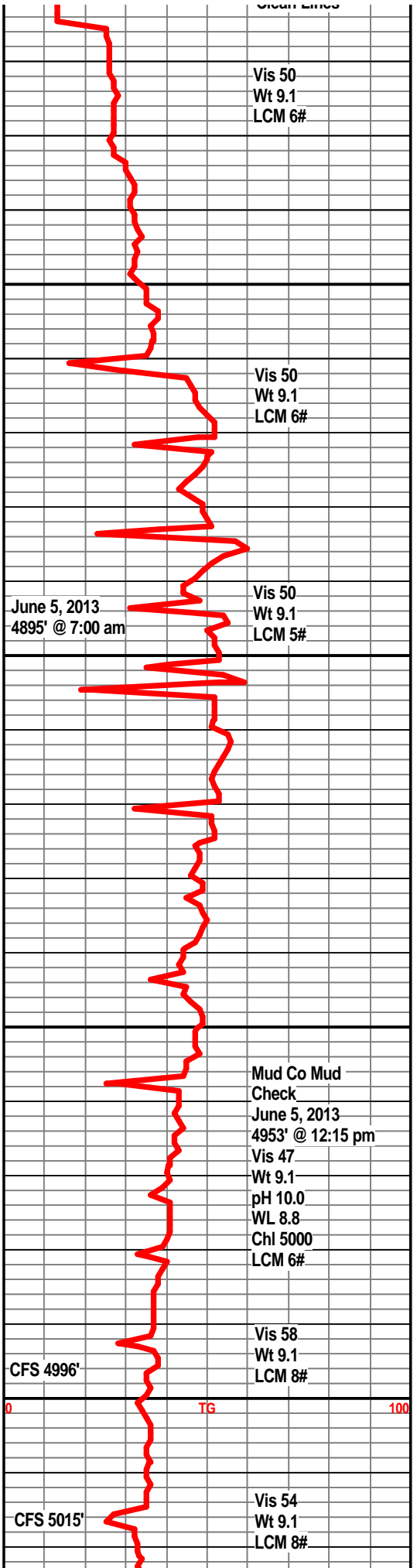
Limestone, tan, granular, dense, tan sharp cherts, dolo in part.

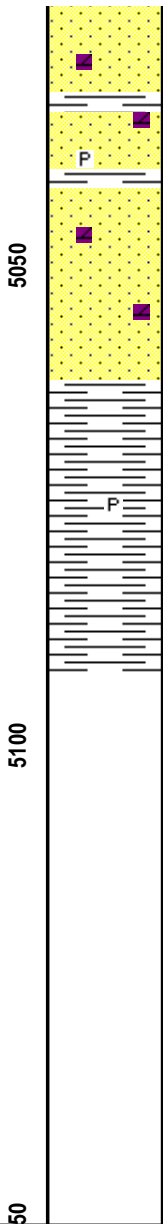
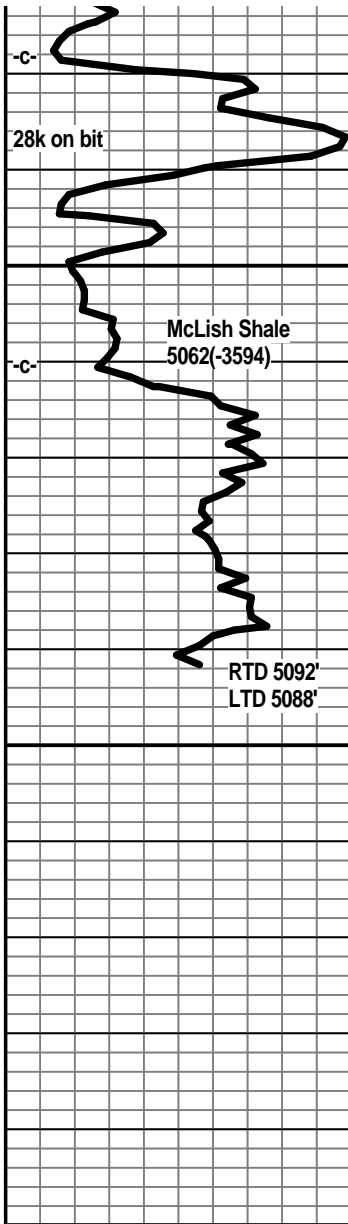
Limestone, tan, dense, granular texture, dolo in part, tan-brown sharp cherts.

Shale, dark green, teal, firm, few sand clusters, well cemented, trace pyrite.

Sandstone, grey-white, angular, poor sorting, well cemented, traces of pyrite, no visible shows.

Sandstone, clear to frosted white, well sorted, sa to sr, friable in part, dolomitic in part, few loose grains in tray, some well cemented, very faint trace scummy oil, trace spotted stain, no odor, fluorescence, no kick.





Sandstone, clear to frosted white, SA to SR, friable in part, some well cemented, dolo, galuc, traces of spotty stain, trace show of dark flakey oil, no odor, no kick, no fluorescence,

Sandstone, clear to white, sa to sr, slightly friable, dolo in part, galuc, no visible shows.

Shale, teal green, dark green, firm, traces of pyrite.

Shale, green, dark green, firm.

