

GEOLOGIST'S REPORT
DRILLING TIME AND SAMPLE LOG

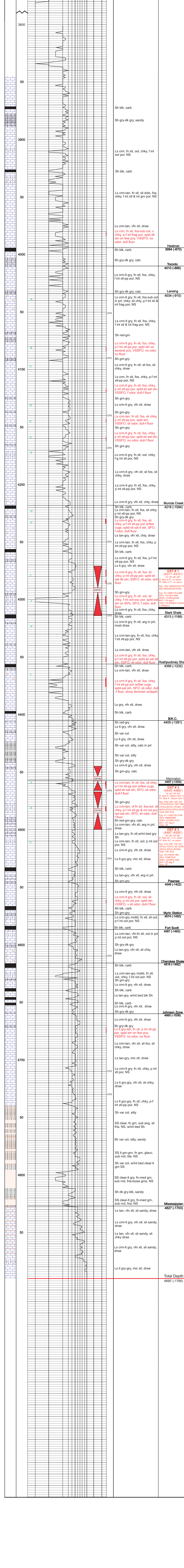
COMPANY: **SHAKESPEARE OIL CO.** ELEVATIONS: **KG 3124'**
 LEASE: **CARBON-26** FIELD: **Petco East** DF: _____
 LOCATION: **649 ENL, 1371 FEL** LOCATION: **649 ENL, 1371 FEL** SEC: **26** T15P: **16S** RGE: **34W** S4E: _____
 COUNTY: **Scott** STATE: **Kansas** Measurements Are All From: **KB**
 CONTRACTOR: **HD Rig #2** From: **KB**
 SPUD: **8-28-13** COMP: **9-7-13**
 RTD: **4890'** LTD: **4889'** CASING: _____
 MUD UP: **3600'** TYPE MUD: **Chemical** CONDUCTION: **N/A**
 SAMPLES SAVED FROM: **3800'** to RTD SURFACE: **8-5/8" @ 264'**
 DRILLING TIME KEPT FROM: **3800'** to RTD PRODUCTION: **4 1/2" @ 4890'**
 SAMPLES EXAMINED FROM: **3800'** to RTD
 GEOLOGICAL SUPERVISION FROM: **3950'** to RTD
 GEOLOGIST ON WELL: **Tim Priest** By: **Weatherford**

FORMATION TOPS: ELECTRIC LOG SAMPLE
 Anhydrite 2448 (+678) 2447 (+677)
 Heebner Shale 3993 (+869) 3994 (+870)
 Lansing 4035 (+911) 4034 (+910)
 SARC 4314 (+1190) 4313 (+1189)
 B/K.C. 4408 (+1284) 4405 (+1281)
 Fort Scott 4590 (+1466) 4587 (+1463)
 Cherokee Shale 4828 (+1704) 4827 (+1703)

REMARKS Due to the results of DSTs, it was decided to set production casing to further test the well.

Respectfully Submitted,
 Tim Priest
 Petroleum Geologist

API #15-171-20969-00-00



Total Depth 4890' (-1766)