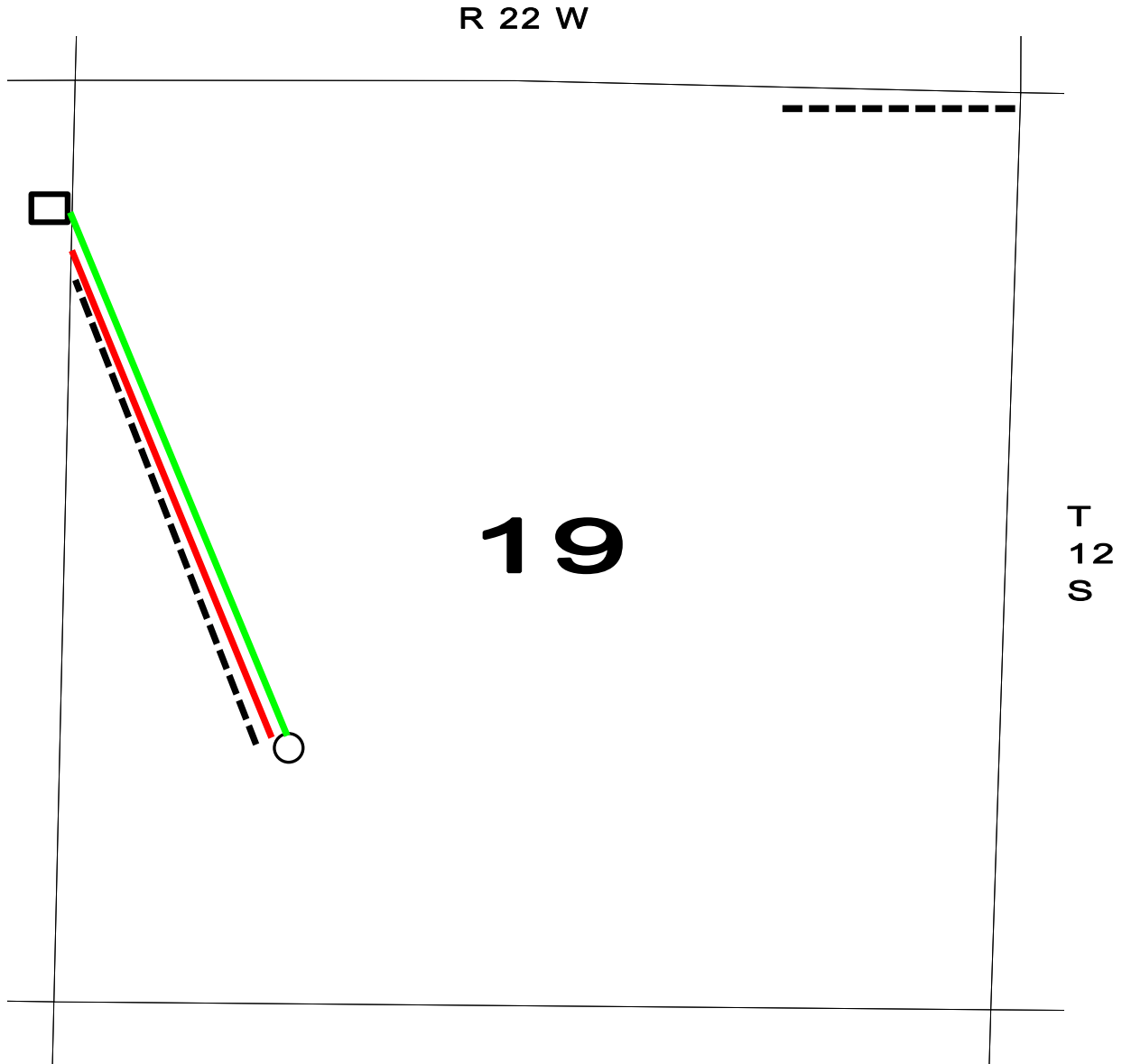


OPERATOR: Samuel Gary Jr. & Associates, Inc. 1515 Wynkoop Street, Suite 700
Denver, Colorado 80202 office: 303-831-4673 ; fax 303-863-7285

WELL NAME: RIEDEL FARMS 1-19

LOCATION: 1420 FSL / 1260 FWL Sec. 19-12S-22W TREGO COUNTY

SURFACE OWNER: Riedel Farms, LLC
28009 J Road
Wakeeney, KS 67672



○ PROPOSED WELL LOCATION

□ ESTIMATED LOCATION OF TANK BATTERY

— ESTIMATED LOCATION OF FLOWLINES

— ESTIMATED LOCATION OF ELECTRICAL LINES

--- ESTIMATED LEASE ROAD