



Scale 1:240 (5"=100') Imperial Measured Depth Log

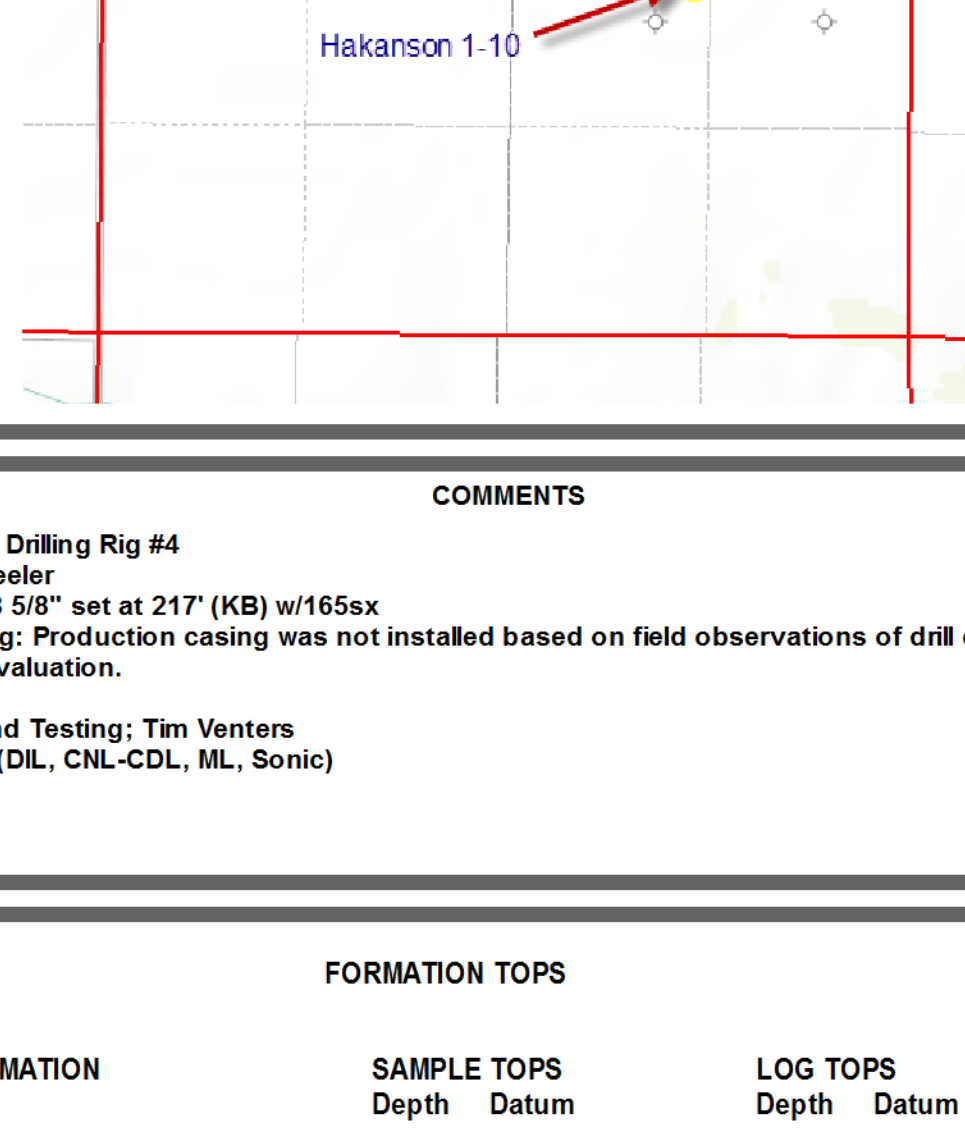
Well Name: Hakanson 1-10 Location: 2245' FSL & 1421' FEL, 10-15S-27W, Gove County, Kansas License Number: API: 15-063-22098 Surface Spud Date: 06/26/2013 Surface Coordinates: Lat: 38.7628876 Long: -100.3055507 Bottom Hole Coordinates: Vertical hole Ground Elevation (ft): 2449' Logged Interval (ft): 3500' Formation: Mississippian at RTD Type of Drilling Fluid: Chemical K.B. Elevation (ft): 2458' Total Depth (ft): 4382' Printed by MUD.LOG from WellSight Systems 1-800-447-1534 www.WellSight.com

OPERATOR

Company: MULL Drilling Company, Inc. Address: 1700 N. Waterfront Parkway, Bldg. 1200 Wichita, KS 67206-6637 316-264-6366

GEOLOGIST

Name: Kent R. Matson Company: Matson Geological Services, LLC Address: 33300 W. 15th Street S. Garden Plain, Kansas 67050 316-644-1975

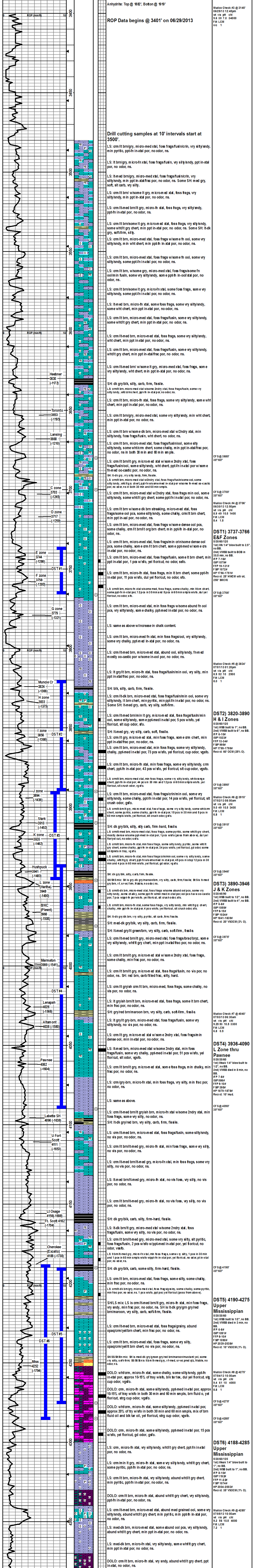


COMMENTS

Contractor: Duke Drilling Rig #4 Pusher: Rich Wheeler Surface Casing: 8 5/8" set at 217' (KB) w/165x Production Casing: Production casing was not installed based on field observations of drill cuttings, DST results and electric log evaluation. Mud by: MudCo DST's by: Diamond Testing; Tim Venters Logs by: Nabors (DIL, CNL-CDL, ML, Sonic) RTD = 4382' LTD = 4384'

FORMATION TOPS

Table with 4 columns: FORMATION, SAMPLE TOPS (Depth, Datum), LOG TOPS (Depth, Datum). Rows include Heebner Shale, Toronto, Lansing, Muncie Creek Shale, Stark Shale, Hushpuckney Shale, Marmaton, Little Osage Shale, Cherokee (Excello SH), Mississippian, RTD, LTD.



RTD 4382', -1924 LTD 4384', -1926