

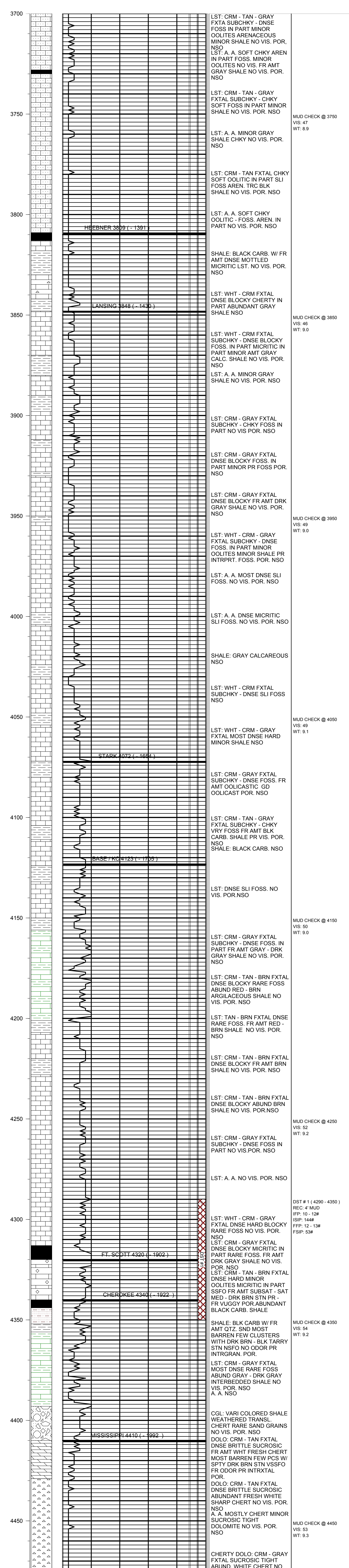
KEVIN L. KESSLER
CONSULTING PETROLEUM GEOLOGIST
(316) 522-7338

| | | |
|---|------------------------------|--------------------------------|
| OPERATOR : MULL DRILLING COMPANY, INC. | | ELEVATION |
| LEASE : PAYNE | WELL # : 1 - 26 | KB : 2418 |
| LOCATION : 360' FSL & 868' FEL | | GL : 2413 |
| SEC: 26 | TWP : 16 S | RGE : 23 W |
| COUNTY : NESS | | STATE : KANSAS |
| CONTRACTOR : W W DRILLING RIG # 10 | | CASING RECORD |
| COMM: 07 / 05 / 2013 | COMP : 07 / 11 / 2013 | SURFACE : 8 5/8" @ 210' |
| RTD : 4480 | LOG TD : 4484 | PRODUCTION : |
| SAMPLES SAVED FROM : 3700 | TO: RTD | ELECTRICAL SURVEYS: |
| GEOLOGICAL SUPERVISION FROM : 3700 | TO : RTD | CDL/CNL |
| MUD UP : 3600 | TYPE MUD : CHEMICAL | DIL |

| FORMATION | TOP | LOG | DATUM | TOP | SAMPLE | DATUM | STRUCT. COMP. |
|-------------|------|-----|--------|------|--------|--------|---------------|
| HEEBNER | 3809 | | - 1391 | 3809 | | - 1391 | - 13 |
| LANSING | 3848 | | - 1430 | 3848 | | - 1430 | - 14 |
| STARK | 4072 | | - 1654 | 4072 | | - 1654 | - 14 |
| BASE/ KC | 4123 | | - 1705 | 4123 | | - 1705 | - 11 |
| FORT SCOTT | 4320 | | - 1902 | 4320 | | - 1902 | - 14 |
| CHEROKEE | 4340 | | - 1922 | 4340 | | - 1922 | - 18 |
| MISSISSIPPI | 4410 | | - 1992 | 4410 | | - 1992 | - 12 |

REFERENCE WELL FOR STRUCTURAL COMPARISON :

PHILLIPS DODGE # 1 KLITZKE SEC 35 - T 16 S - R 23 W NESS COUNTY KANSAS



RTD = 4480 LTD = 4484

COMMENTS:

DUE TO LOW STRUCTURAL POSITION & NEGATIVE

DRILL STEM TEST RESULTS

THIS WELL WAS PLUGGED AS DRY & ABANDONED

KEVIN L. KESSLER