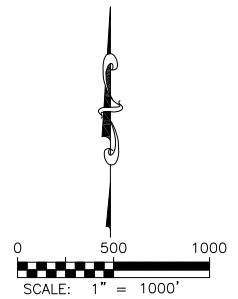
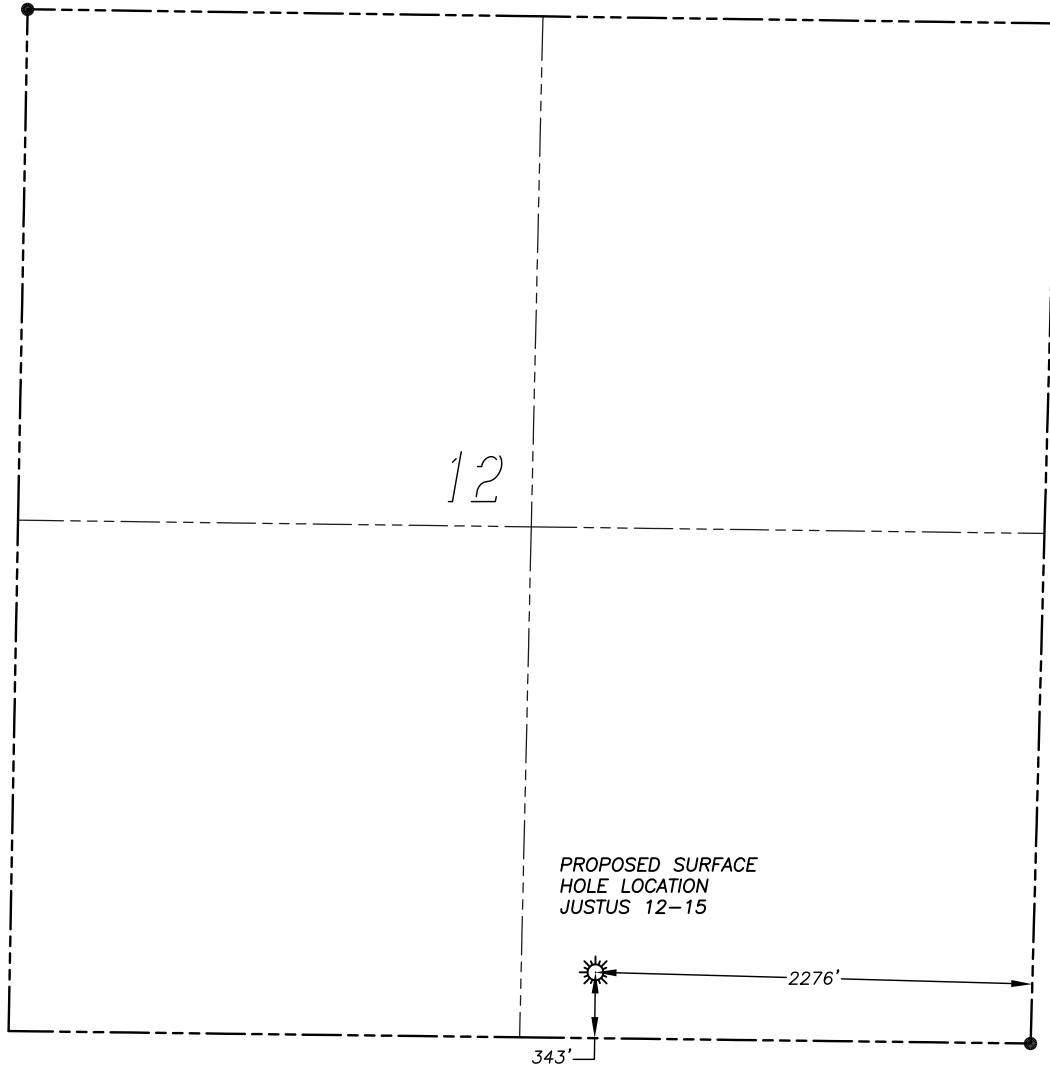


WELL LOCATION MAP JUSTUS 12-15

SECTION 12, TOWNSHIP 10 SOUTH, RANGE 22 WEST OF THE 6TH PRINCIPAL MERIDIAN



NAD 83 LATITUDE AND LONGITUDE

JUSTUS 12-15 SURFACE HOLE:

LATITUDE: N39.19131°
LONGITUDE: W99.72477°
ELEVATION: 2277'
FOOTAGE: 343' FSL, 2276' FEL
QTR/QTR: SW4/SE4
DATE: 10/8/2013

IN ACCORDANCE WITH A REQUEST FROM McELVAIN ENERGY INC., DALEY LAND SURVEYING, INC. HAS DETERMINED THE SURFACE LOCATION OF THE JUSTUS 12-15 WELL TO BE 343' FSL, 2276' FEL, AS MEASURED AT NINETY (90) DEGREES FROM THE SECTION LINES OF SECTION 12, TOWNSHIP 10 SOUTH, RANGE 22 WEST OF THE 6TH PRINCIPAL MERIDIAN, GRAHAM COUNTY, KANSAS.

NOTES:

- 1) HORIZONTAL DATUM IS NAD83.
- 2) VERTICAL DATUM IS NAVD88 AND ORIGINATES FROM N.G.S. BENCHMARK X-301 NETWORK, UTILIZING THE GEOID09 MODEL.
- 3) SURFACE USE: PASTURE.
- 4) THIS MAP DOES NOT REPRESENT A BOUNDARY SURVEY, IT IS NOT A LAND SURVEY PLAT OR AN IMPROVEMENT SURVEY PLAT AND IT IS NOT TO BE RELIED UPON FOR THE ESTABLISHMENT OF FENCE, BUILDING OR OTHER FUTURE IMPROVEMENT LINES.

ACCESS ROAD MAP JUSTUS 12-15

SECTION 12, TOWNSHIP 10 SOUTH, RANGE 22 WEST OF THE 6TH PRINCIPAL MERIDIAN

