



**TRILOBITE
TESTING, INC.**

DRILL STEM TEST REPORT

Samuel Gary Jr. & Associates

36-16s-16w-Rush Co KS

1515 Wynknopp, STE 700
Denver CO, 80202

Schneider #1-36

Job Ticket: 53983

DST#: 1

ATTN: Kurt Strube

Test Start: 2013.06.28 @ 12:52:11

GENERAL INFORMATION:

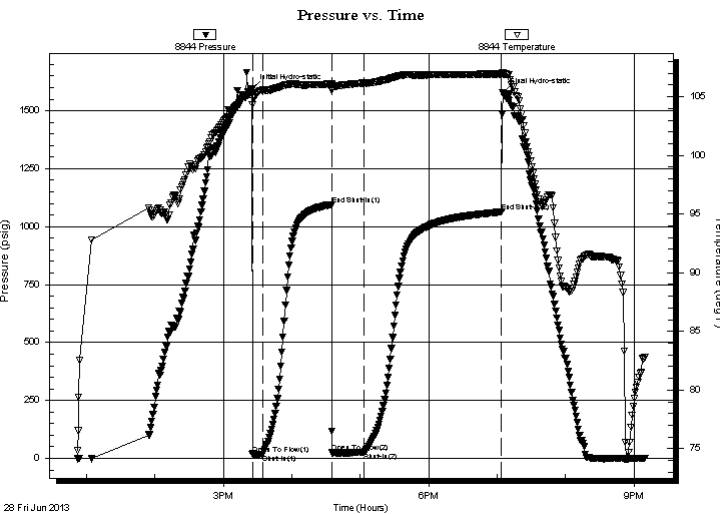
Formation: **Top of lansing -D**
 Deviated: No Whipstock: ft (KB)
 Test Type: Conventional Bottom Hole (Initial)
 Time Tool Opened: 15:25:31 Tester: Tate Lang
 Time Test Ended: 21:09:20 Unit No: 68
 Interval: **3307.00 ft (KB) To 3356.00 ft (KB) (TVD)** Reference Elevations: 2010.00 ft (KB)
 Total Depth: 3356.00 ft (KB) (TVD) 2000.00 ft (CF)
 Hole Diameter: 7.88 inches Hole Condition: Good KB to GR/CF: 10.00 ft

Serial #: 8844

Inside

Press @ Run Depth: 26.75 psig @ 3308.00 ft (KB) Capacity: 8000.00 psig
 Start Date: 2013.06.28 End Date: 2013.06.28 Last Calib.: 2013.06.28
 Start Time: 12:52:16 End Time: 21:09:20 Time On Btm: 2013.06.28 @ 15:25:21
 Time Off Btm: 2013.06.28 @ 19:05:01

TEST COMMENT: Weak surface blow built to 3 in.
 Dead no blow back.
 B.O.B. in 2 mins
 Dead no blow back



PRESSURE SUMMARY

| Time (Min.) | Pressure (psig) | Temp (deg F) | Annotation |
|-------------|-----------------|--------------|----------------------|
| 0 | 1596.42 | 105.21 | Initial Hydro-static |
| 1 | 16.38 | 104.33 | Open To Flow (1) |
| 9 | 17.97 | 105.57 | Shut-In(1) |
| 70 | 1095.03 | 106.07 | End Shut-In(1) |
| 71 | 24.89 | 105.72 | Open To Flow (2) |
| 99 | 26.75 | 106.17 | Shut-In(2) |
| 219 | 1063.46 | 106.94 | End Shut-In(2) |
| 220 | 1578.83 | 107.06 | Final Hydro-static |

Recovery

| Length (ft) | Description | Volume (bbl) |
|-------------|-------------|--------------|
| 30.00 | 15%O 85%M | 0.42 |
| 0.00 | 210 GIP | 0.00 |
| | | |
| | | |
| | | |

Gas Rates

| | Choke (inches) | Pressure (psig) | Gas Rate (Mcf/d) |
|--|----------------|-----------------|------------------|
| | | | |



**TRILOBITE
TESTING, INC.**

DRILL STEM TEST REPORT

FLUID SUMMARY

Samuel Gary Jr. & Associates

36-16s-16w-Rush Co KS

1515 Wynknopp, STE 700
Denver CO, 80202

Schneider #1-36

Job Ticket: 53983

DST#: 1

ATTN: Kurt Strube

Test Start: 2013.06.28 @ 12:52:11

Mud and Cushion Information

Mud Type: Gel Chem

Cushion Type:

Oil API:

32 deg API

Mud Weight: 9.00 lb/gal

Cushion Length:

ft

Water Salinity:

ppm

Viscosity: 42.00 sec/qt

Cushion Volume:

bbbl

Water Loss: 9.19 in³

Gas Cushion Type:

Resistivity: ohm.m

Gas Cushion Pressure:

psig

Salinity: 3200.00 ppm

Filter Cake: 1.00 inches

Recovery Information

Recovery Table

| Length ft | Description | Volume bbl |
|--------------|-------------|---------------|
| 30.00 | 15%O 85%M | 0.421 |
| 0.00 | 210 GIP | 0.000 |

Total Length: 30.00 ft Total Volume: 0.421 bbl

Num Fluid Samples: 0

Num Gas Bombs: 0

Serial #:

Laboratory Name:

Laboratory Location:

Recovery Comments: Sampler Had 200 ML Oil

