

ADVANTAGE ELEVATIONS

OIL FIELD SURVEYORS

BOX 8604 - PRATT, KS 67124
(620) 672-6491

930132

INVOICE NO.

N-10 EXPLORATION LLC

OPERATOR

13

NO.

MECICINE RIVER RANCH B

FARM

Barber

COUNTY

15

S

34s

T

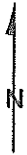
11w

R

SW NW SW

LOCATION

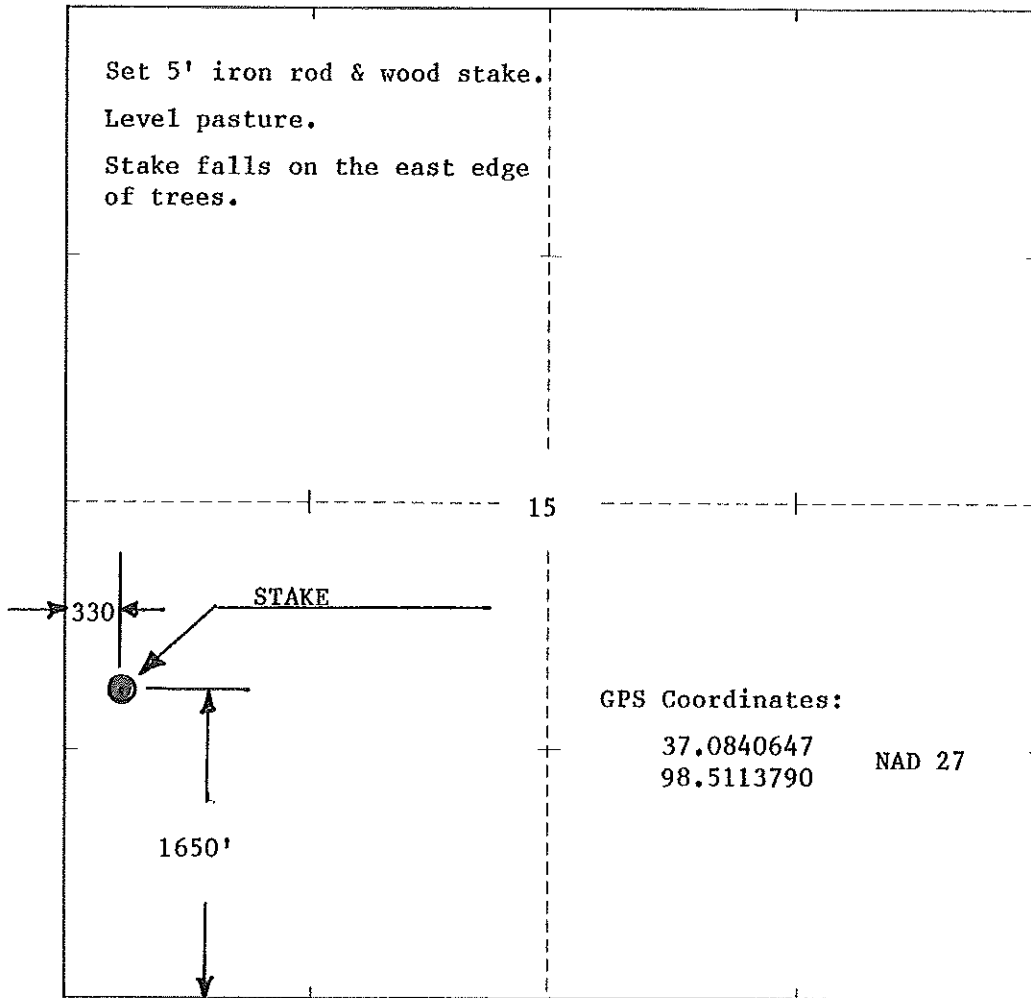
ELEVATION: 1331' GR



N-10 EXPLORATION LLC
PO Box 195
Attica, KS 67009-0195

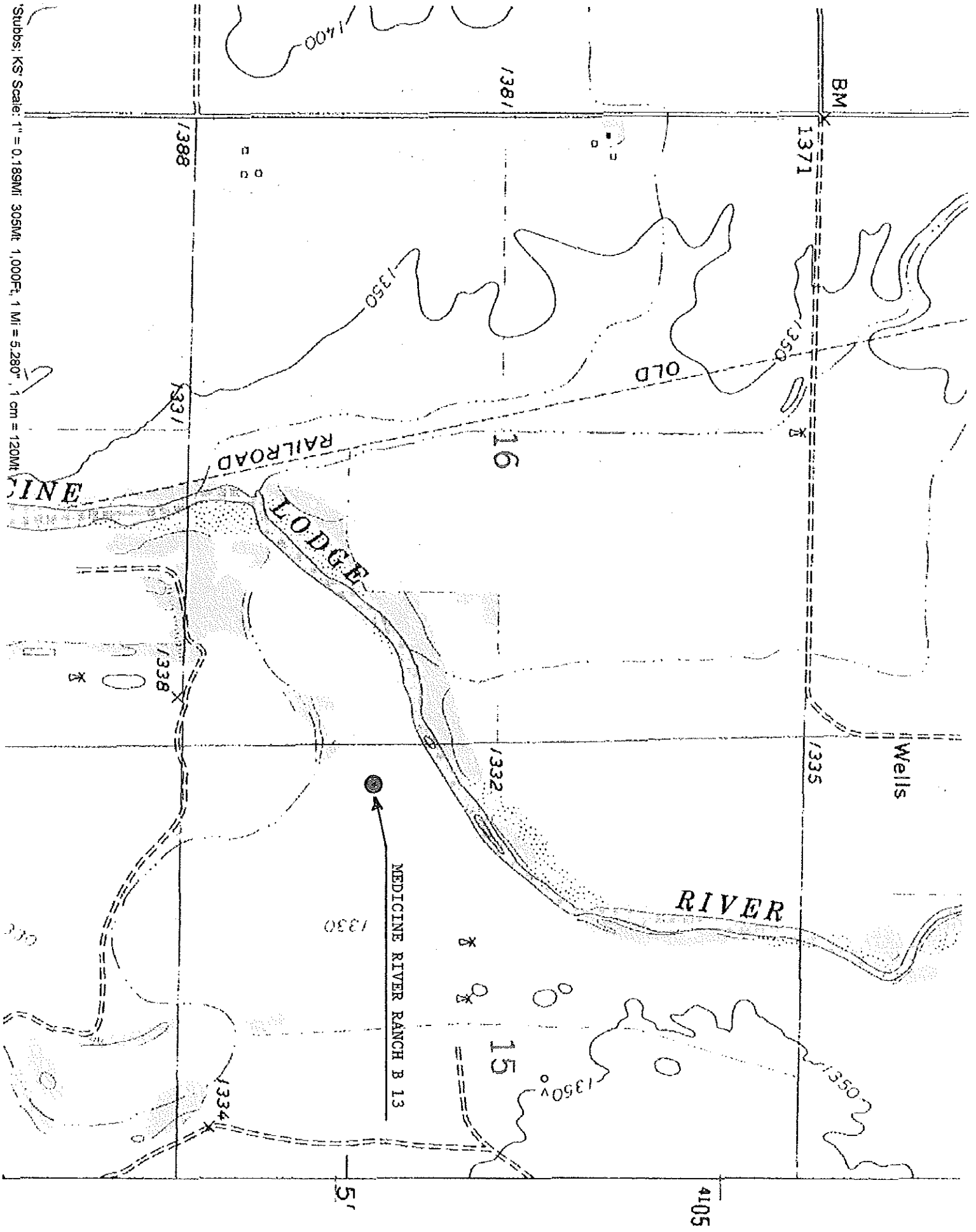
AUTHORIZED BY: Randy Newberry

SCALE: 1" = 1000'



DATE STAKED: 10/1/13

Stubs; KS' Scale: 1" = 0.189MI, 305MT, 1,000Ft, 1 MI = 5,280', 1 cm = 120MT



4105

5'