

ADVANTAGE ELEVATIONS

OIL FIELD SURVEYORS

BOX 8604 - PRATT, KS 67124
(620) 672-6491

104131

INVOICE NO.

MURFIN DRILLING CO INC
OPERATOR

1-20
NO.

MILTON OWWO
FARM

Stafford
COUNTY

20 23s 11w
S T R

SE SE SW
LOCATION

ELEVATION: 1819' GR

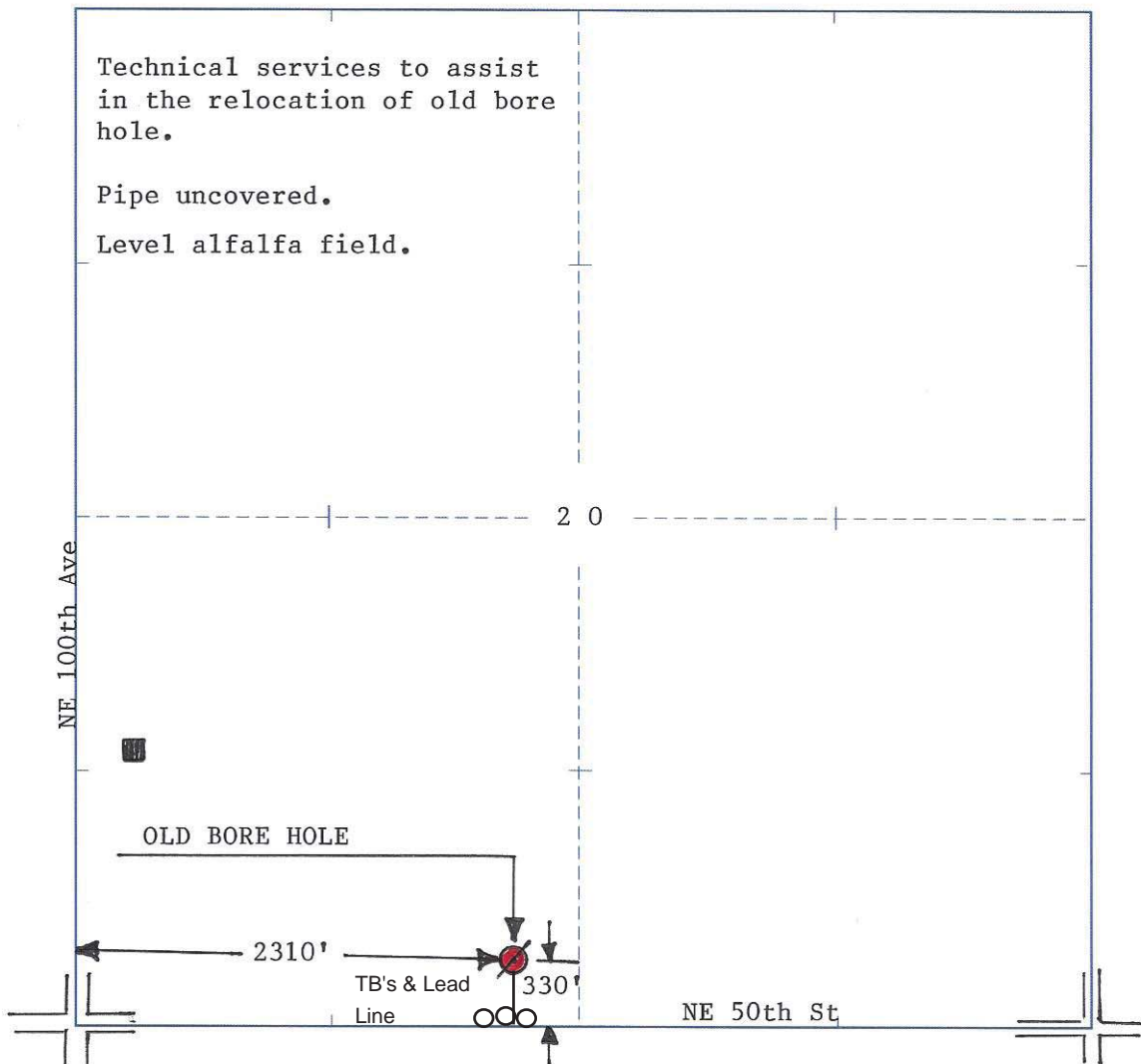


MURFIN DRILLING CO INC.
250 N Water St. Ste 300
Wichita, KS 67202

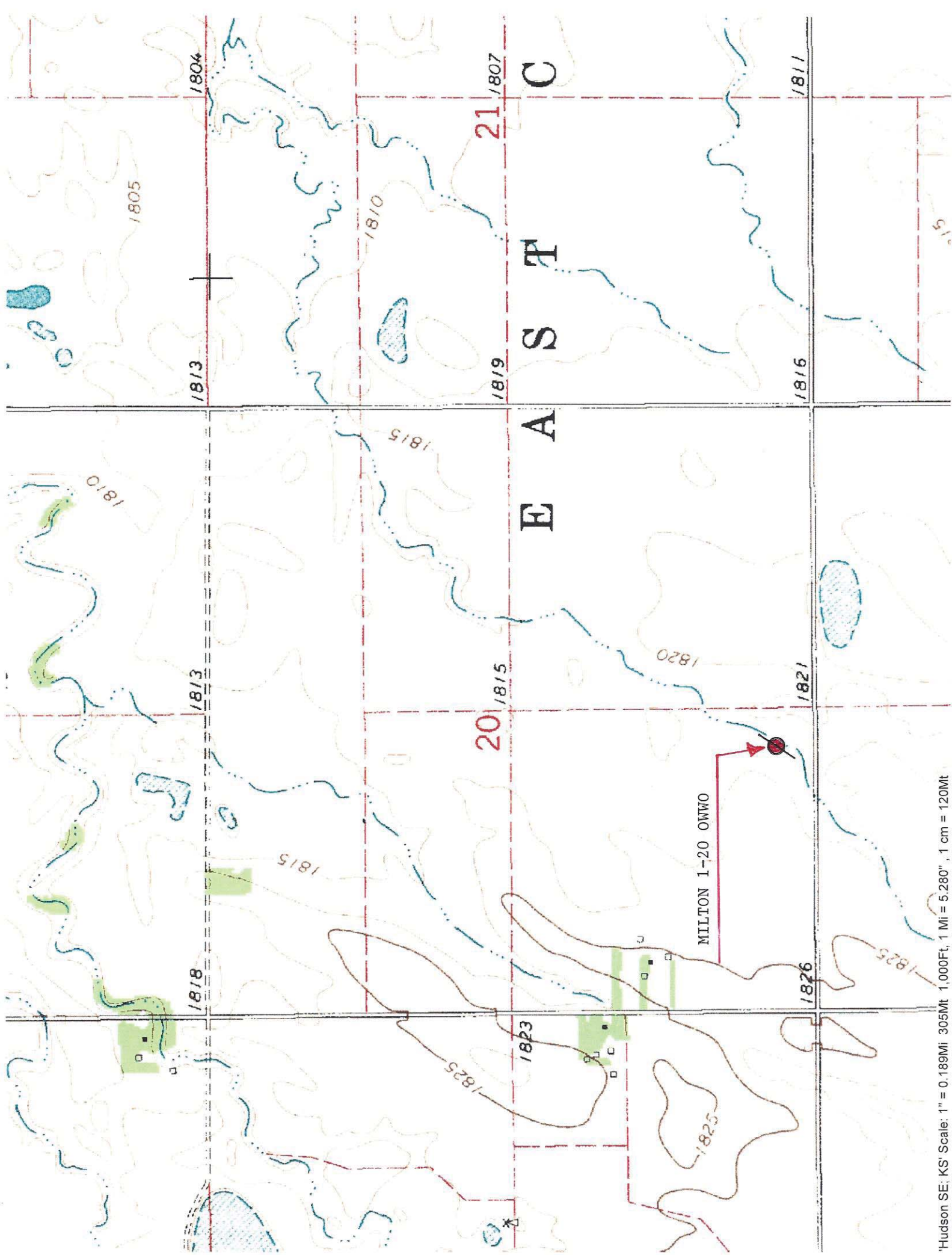
Shauna Gunzelman

AUTHORIZED BY:

SCALE: 1" = 1000'



DATE STAKED: 10/7/13



Hudson SE; KS' Scale: 1" = 0.189Mi; 305Mt; 1,000Ft, 1 Mi = 5.280", 1 cm = 120Mt