

M. Bradford Rine

Consulting Geologist, Licensed and Certified

Scale 1:240 (5"=100') Imperial
Measured Depth Log

Well Name: Butler-Bealor Unit "A" #1-6 - Trans Pacific Oil Corporation
Location: E2-N2-NE, Section 06-25S-20W
License Number: API: 15-047-21622-00-00
Spud Date: September 16, 2013
Surface Coordinates: 660' FNL & 1320' FEL,
of Section
Bottom Hole Vertical Wellbore
Coordinates: P & A
Ground Elevation (ft): 2250 Ft. K.B. Elevation (ft): 2262 Ft.
Logged Interval (ft): 3800 Ft. To: 4800 Ft. Total Depth (ft): RTD 4800 Ft. LTD 4796 Ft.
Formation: Mississippi at Total Depth
Type of Drilling Fluid: Chemical

Region: Edwards Co., Kansas
Drilling Completed: September 25, 2013
Field: Wildcat

Printed by MUD.LOG from WellSight Systems 1-800-447-1534 www.WellSight.com

Operator

Company: Trans Pacific Oil Corporation
Address: 100 South Main, Suite 200
Wichita, Kansas 67202

Geologist

Name: M. Bradford Rine
Company: Consulting Geologist, Kansas Lic. #204, Wyo #189, AAPG Cert. #2647
Address: 100 South Main, Suite #415
Wichita, Kansas 67202

Remarks

Based on sample observations, drill stem test results, and electric log evaluation, it was the decision of the Operator, to plug and abandon the "Butler-Bealor Unit 'A' #1-6, on September 25, 2013.

Respectfully submitted,
M. Bradford Rine, Geologist

Butler-Bealor Unit "A" #1-6
Section 06-25S-20W, Edwards County, Kansas



	Trans Pacific Oil Corp.			TPOC (Well A)		Well A
	Butler-Bealor Unit "A" #1-6			Butler "A" #1-6		
	660' FNL & 1320' FEL			2305' FNL & 899' FEL		
	06-25S-20W			06-25S-20W		
	KB 2262 Ft.			KB 2266 Ft.		
Formations	Sample	E-Log	Datum	E-Log	Datum	Comp.
Anhydrite	1403	1398	864	1404	862	2
B/Anhydrite	N/C	1410	852	1416	850	2
Chase	N/C	2458	-196	2476	-210	14
Heebner Sh	3988	3981	-1719	3998	-1732	13
Brown Lime	4087	4080	-1818	4100	-1834	16
Lansing	4098	4090	-1828	4111	-1845	17
Stark Sh	4348	4339	-2077	4353	-2087	10
B/Kansas City	4446	4435	-2173	4450	-2184	11
Marmaton	4468	4459	-2197	4474	-2208	11
Labette Sh	4612	4604	-2342	4616	-2350	8
Cherokee Sh	4647	4639	-2377	4652	-2386	9
Mississippi Warsaw ?	4682	4674	-2412	4692	-2426	14
Mississippi Osage	4709	4703	-2441	4713	-2447	6
Total Depth	4800	4796	-2534	4832	-2566	32

Drilling Information

Rig: Duke Drilling #1
Pump: Ideco MM700 6 x 16
Drawworks: Ideco H30
Collars: 474' 2-1/4 x 6-1/4
Drillpipe: 4-1/2" 16.6#
Toolpusher: Mike Godfrey

Mud: Mudco (Terry Ison)
Gas Detector: None
Drill Stem Tests: Diamond (Jake Fahrenbruch)
Logs: Nabors (Ian Mabb)
Water: Offerle Municipal Well (Cheyenne Tank)
Company Representatives:
Office: Beth Isern and Bryce Bidleman
Field: None

Daily Drilling Status

Date:	Operations/Depth/Comments
09-16-13	MIRT, RU, Spud @ 0'
09-17-13	Waiting on Cement @ 313'
09-18-13	Drilling @ 1871'
09-19-13	Drilling @ 2955'
09-20-13	Drilling @ 3823'
09-21-13	TOOH/DST1 @ 4145'
09-22-13	Drilling @ 4541'
09-23-13	On Bottom with DST 2 @ 4706'
09-24-13	Trip in Hole after DST 3 @ 4713'
09-25-13	Trip Out for logs @ RTD 4800'
09-26-13	Finish plugging at 3:30 am @ 4800'

Casing Record, Bit Record, Deviation Surveys

CASING:

Conductor: None

Surface: Ran 7 jts 8-5/8" 23#, set @ 311'. Cement with 225 sx Class A, 03%CC, 02% gel. Plug down @ 12:00 pm. Cement did circulate.

Production: P & A

Plugged as follows: 50 sz @ 1410', 40 sx @ 500', 50 sx @ 310', 20 sx @ 60', 30 sx in rat hole, 20 sx in mouse hole. 210 sx Total, 60/40 poz, 4% gel, 1/4# flo-cel per sk. Plug down @ 3:30 am, 09-26-13.

BITS:

No.	Size	Make	Model	Depth In	Depth Out	Hours
1	12-1/4	Varel	DT1G	0	313	2
2	7-7/8	Varel	HE29	313	4145	61.25
3	7-7/8	Varel	HE29	4145	4800	28.75

DEVIATION SURVEYS:

Deviation:	Depth:	Deviation:	Depth:
3/4*	313'	1*	2124'
3/4*	829'	1*	4145'
1*	1554'	1*	4706'
		1*	4800'

DST #1: 4116-4145 (Lansing "B")

Times: 30-75-60-90

Initial Open: Stg, b.o.b. 7.5 min'

Wk surf return, died

Final Open: Stg, b.o.b. 10.5 min,

No return blow

Rec: 970' Total Fluid

140' MCW: 73% wtr 27% mud

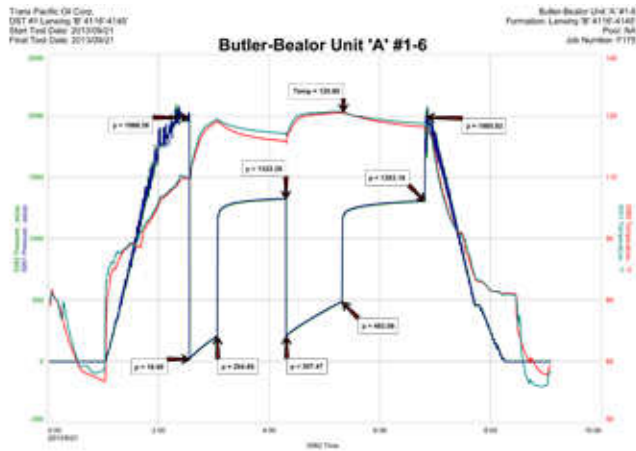
830' Wtr: (75,000 ppm Chl)

IHP: 1986 FHP: 1986

IFP: 19-205 FFP: 207-483

ISIP: 1322 FSIP: 1303

BHT: 126°F



DST #2: 4658-4706 (Mississippi)

Times: 30-75-60-90

Initial Open: Wk+, built to 2" i.b.

Final Open: Fr-, built to 3" i.b.

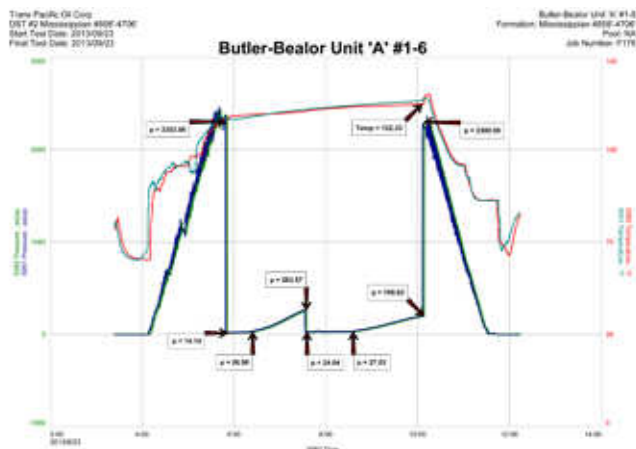
Rec: 35' SOCM 10% oil 90% mud

IHP: 2304 FHP: 2301

IFP: 14-27 FFP: 24-27

ISIP: 264 FSIP: 200

BHT: 122°F



DST #3: 4658-4713 (Mississippi)

Times: 30-75-30-90

Initial Open: Wk, built to 1" then died

Final Open: Wk surf blow, died in 5 min

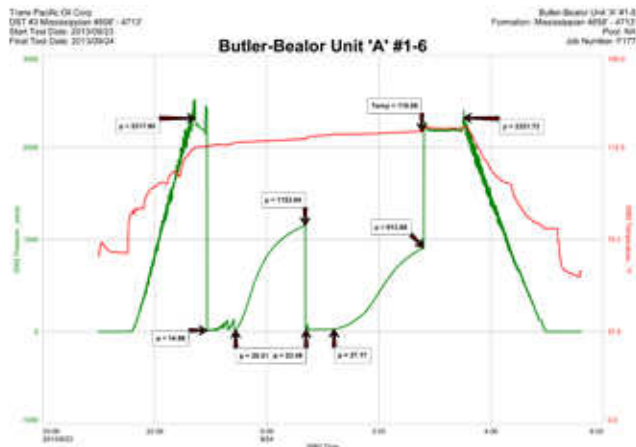
Rec: 30' VSOCM: 01% oil 99% mud

IHP: 2318 FHP: 2322

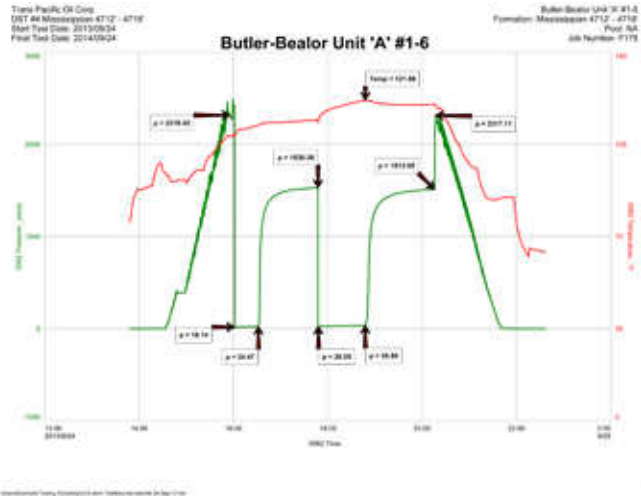
IFP: 15-21 FFP: 24-27

ISIP: 1154 FSIP: 914

BHT: 119°F



DST #4: 4712-4718 (Mississippi)
Times: 30-75-60-90
Initial Open: Wk, built to 1" i.b.
Final Open: Wk, built to 1" i.b.
Rec: 55' WCM: 35%w 65%m
Oil spots in tool
(Chl/wtr 18000ppm Chl/mud 16000)
IHP: 2318 FHP: 2317
IFP: 18-24 FFP: 26-36
ISIP: 1530 FSIP: 1514
BHT: 122°F



Rock Types

	Anhy		Black shale		Coal		Lmst		Shcol		Sltyshtst
	Bent		Congl		Meta		Mrlst		Shgy		Siltst
	Brec		Dol		Salt		Ss		Till		Sandyls
	Cht		Gyp		Shale						
	Clyst		Igne								

Accessories

MINERAL		Gyp	FOSSIL		Ostra		Siltstrg
	Anhy		Hvymin		Pelec		Ssstrg
	Arggrn		Kaol		Pellet	TEXTURE	
	Arg		Marl		Pisolite		Boundst
	Bent		Minxl		Plant		Chalky
	Bit		Nodule		Strom		Cryxln
	Brecfrag		Phos	STRINGER			Earthy
	Calc		Pyr		Anhy		Finexln
	Carb		Salt		Shale		Grainst
	Chtdk		Sandy		Bent		Lithogr
	Chtlt		Silt		Coal		Microxln
	Dol		Sil		Dol		Mudst
	Feldspar		Sulphur		Gyp		Packst
	Ferrpel		Tuff		Ls		Wackst
	Ferr				Mrst		
	Glau						

Other Symbols

OIL SHOW
 ☒ Gas show
 ● Even

☐ Spotted
 ◻ Trace/ques
 ◻ Dead

◻ Gas

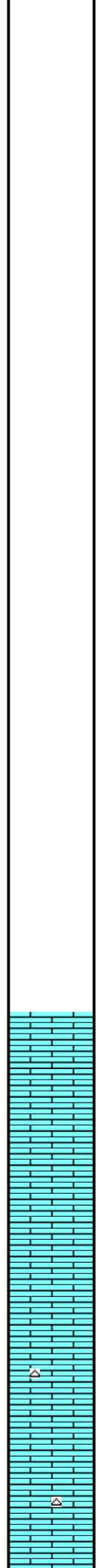
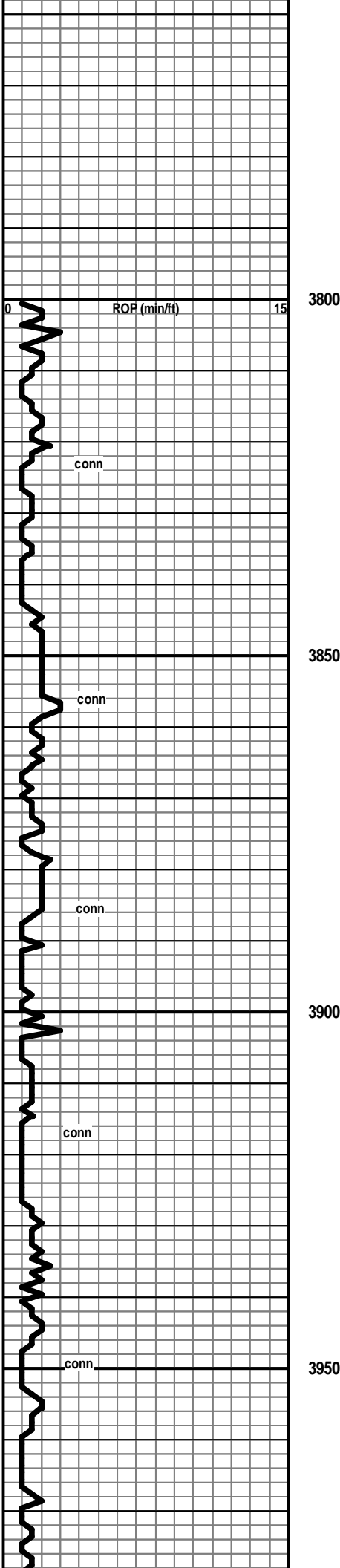
INTERVAL
 ■ Core
 ■ Dst

ROP (min/ft) ROP (min/ft) —————	Depth	Lithology	Geological Descriptions	Remarks
0 ROP (min/ft) 15				
	1300			
	50			
< ANHYDRITE	1400		←----- 1403 (+859)	
*** Depth Break ***				

* Displace & Mudup @
3602 ft.

7:00 AM, September 20, 2013

Mud Check, Drlg @ 3869':
Vis Wt WL LCM PV YP
45 9.0 8.0 1 12 15
Chl Hd pH Solids
12000 80 10.5 4.2

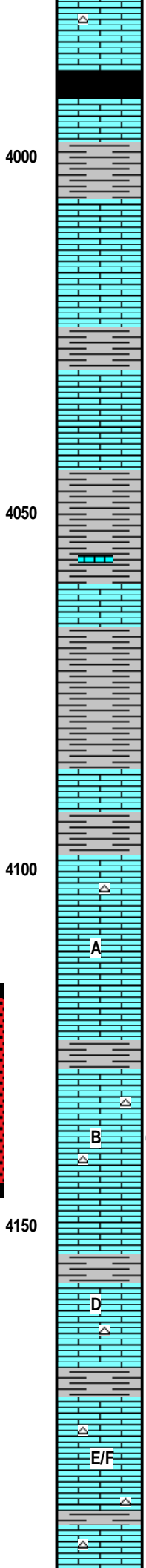
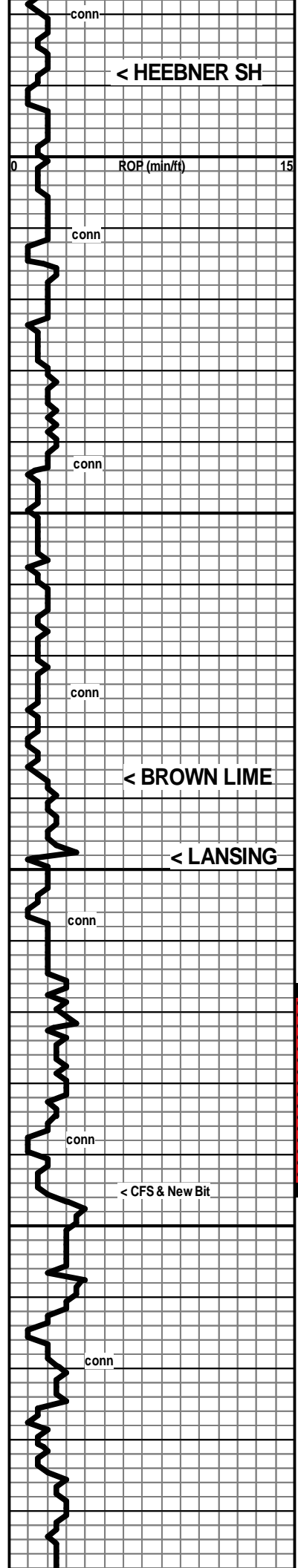


Ls cr-gy-tan, fn xln, fr xln por in pt, foss

Ls wh-cr-tan, fn xln, pr-fr xln por, foss, scatt patches of fn xln pyrite

Ls cr-tan-gy, fn xln, pr-fr xln por, some chert wh/gy mix, subgraiiny text

Ls wh-cr, fn xln, pr-fr xln por, foss, chert: fresh, lt gy, transl



----- 3988 (-1726)
 Sh black-dk gy, subcarb-carb

Sh gy-grnish gy

Ls cr-tan-gy, mostly dns, some pr xln por, subchalky in pt, sli foss
 [No Show]

Sh gy-grn

Ls wh-cr, fn xln, pr xln por in pt, chalky in pt, some subgreainy text with por, foss in pt

Sh gy-dk gy-grn, subfiss to subsilty

Poss some scatt stringers of Ls

Ls cr, fn xln, pr xln por, foss

Sh gy-grnish, calc in pt, embedded foss in pt

----- 4087 (-1825)
 Ls cr-tan, fn xln, dns, foss

Sh gy-grnish

----- 4098 (-1836)
 Ls cr-tan, fn xln, pr-fr xln por, dns in pt, some subsucr text, foss, Rr pcs Chert: frsh wh-cr, foss
 [No Show]

A
 Ls wh-cr-tan, fn xln, dns, chalky in pt, foss

Sh gy-grnish, subsilty-mic text

Ls cr, fn xln, dns, subshalky in pt, foss

Ls wh-cr-tan, fn xln, pr-fr xln por in pt, scatt pp & vug pores, foss, chert: fresh, wh, foss, opa; Rr gy subtransl pcs

B
 [No Odor, few pcs per tray with Moderate spotty-patchy fluor, found 2 pcs total with spots of brn stn and trace show lt brn FO on brk, vugs are barren]

Sh gy-dk gy-grnish, mic text scatt calc foss

D
 Ls cr-tan fn xln, some subchalky, mostly dns, foss (some weath to gy), Rr chert: fresh, gy, transl

Sh gy

Ls cr-tan, fn xln, scatt grainy text in pt, pr-fr xln por in pt, foss, abund chert: fresh, cr-gy, transl to opa; foss & ool in pt

E/F
 Ls cr-tan, fn xln, dns, foss, cherty as above

Ls wh-cr, fn xln, dns-pr xln por, chalky in pt, foss, chert: fresh,

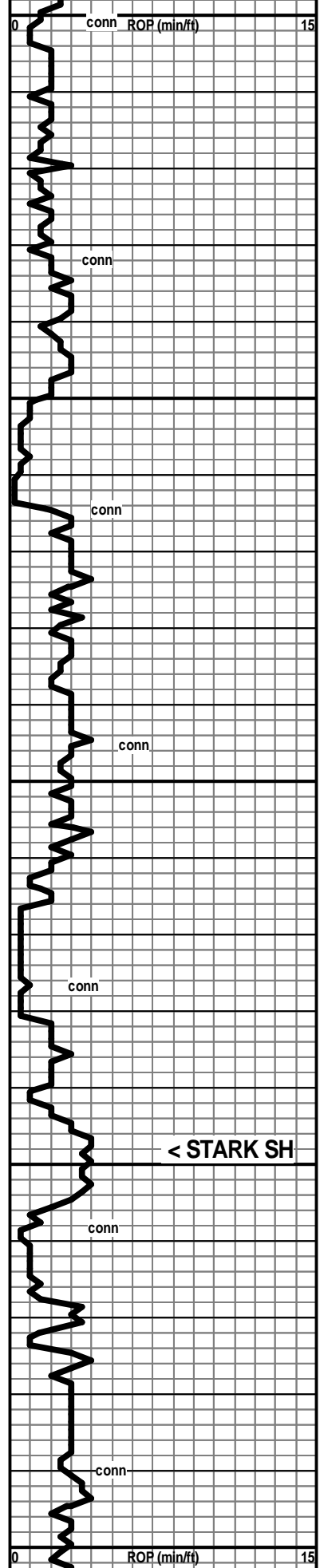
WOB: 35000
 RPM: 85
 PP: 700
 SPM: 54

Pipe Strap @ 4145':
 Strap = 4174.95'
 Board = 4169.93'
 (Strap Long 5.02')

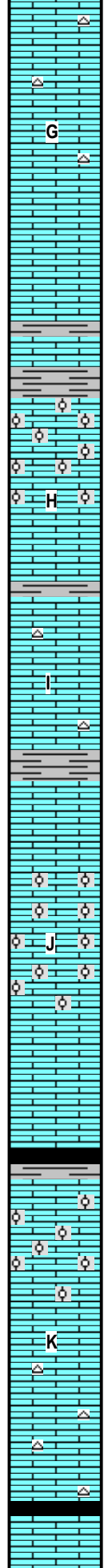
DST #1: 4116-4145 (Lans B)
 Times: 30-75-60-90
 Initial Open: Stg, b.o.b. 7.5 min, wk surf return blow died
 Final Open: Stg, b.o.b. 10.5 min, no return blow
 Rec: 970' Total Fluid
 140' MCW: 73%w 27%am
 830' Wtr: 100%w (75,000 ppm Chl)
 (Chl mud/12000 ppm)
 Scum oil in tool
 IHP: 1986 FHP: 1986
 IFP: 19-205 FFP: 207-483
 ISIP: 1322 FSIP: 1303
 BHT: 126°F

7:00 AM, September 21, 2013

Mud Check, TIH/bit @ 4145':
 Vis Wt WL LCM PV YP
 70 9.2 10.8 2 18 22
 Chl Hd pH Solids
 11000 80 9.5 5.6



4200
4250
4300
4350
4400



wh-cr, opa

G
Ls wh-cr, fn xln, dns-pr xln por, chalky in pt, abund chert: fresh, wh-cr-gy, transl-opaq, foss in pt

Ls wh-cr, fn xln, pr xln por with some vis fr xln por, foss

Sh gy

Ls cr-pl gy, fn xln, scatt xln por, ool & oom
[No Show]

H
Ls cr-tan, fn xln, dns, sli foss

Sh gy

Ls cr-tan, fn xln, dns, some subchky-chalky, foss in pt, sli cherty: fresh, gy, transl to wh & opa

I
Sh gy

Ls cr-tan, fn xln, fr-gd xln por (dolom text) oom, gd fr-gd oom por, gd crush
[No Show]

J
Ls wh-cr, fn xln, dns, foss-abund fofss

Ls cr, fn xln, pr-fr xln por, scatt sm vugs, foss

←----- 4348 (-2086)
Sh black (poorly repres in spl)

Ls cr, fn xln, dns, foss

Ls cr-tan, fn xln, ool & oom, some xln por, foss in pt
[No Show]

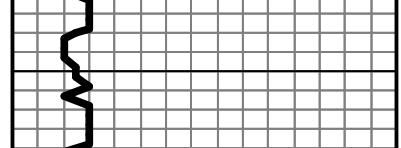
(Few pcs black shale in 4370' spl, some pyritic, some mixed with Ls)

K
(black shale in 4390' spl-only a trace, Rr pcs in 4400 ft spl)

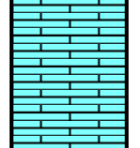
Ls cr-tan, fn xln, pr xln por-dns, foss, abund chert: fresh, wh, subpaq

Sh gy-grnish-black, carb in pt

Ls wh-cr-pl gy, vfn-fn xln, mosly dns & firm, some soft and chalky, foss in pt, scatt calcite patches
[No Show]



4200
4250
4300
4350
4400



wh-cr, opa

G
Ls wh-cr, fn xln, dns-pr xln por, chalky in pt, abund chert: fresh, wh-cr-gy, transl-opaq, foss in pt

Ls wh-cr, fn xln, pr xln por with some vis fr xln por, foss

Sh gy

Ls cr-pl gy, fn xln, scatt xln por, ool & oom
[No Show]

H
Ls cr-tan, fn xln, dns, sli foss

Sh gy

Ls cr-tan, fn xln, dns, some subchky-chalky, foss in pt, sli cherty: fresh, gy, transl to wh & opa

I
Sh gy

Ls cr-tan, fn xln, fr-gd xln por (dolom text) oom, gd fr-gd oom por, gd crush
[No Show]

J
Ls wh-cr, fn xln, dns, foss-abund fofss

Ls cr, fn xln, pr-fr xln por, scatt sm vugs, foss

←----- 4348 (-2086)
Sh black (poorly repres in spl)

Ls cr, fn xln, dns, foss

Ls cr-tan, fn xln, ool & oom, some xln por, foss in pt
[No Show]

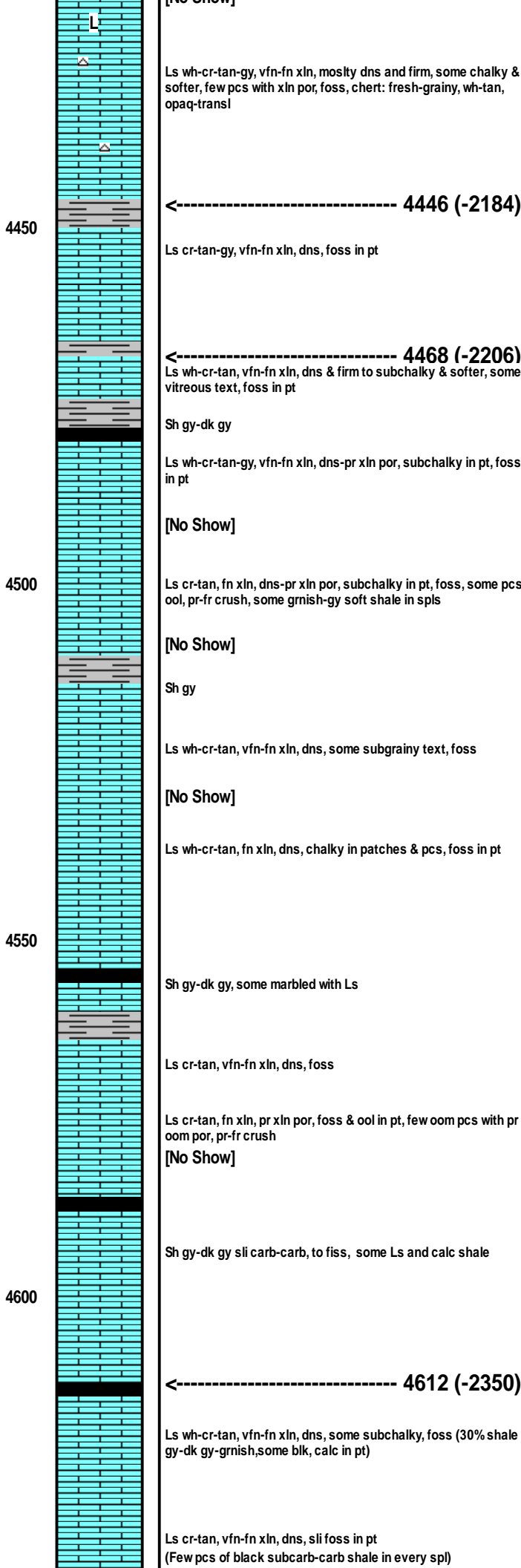
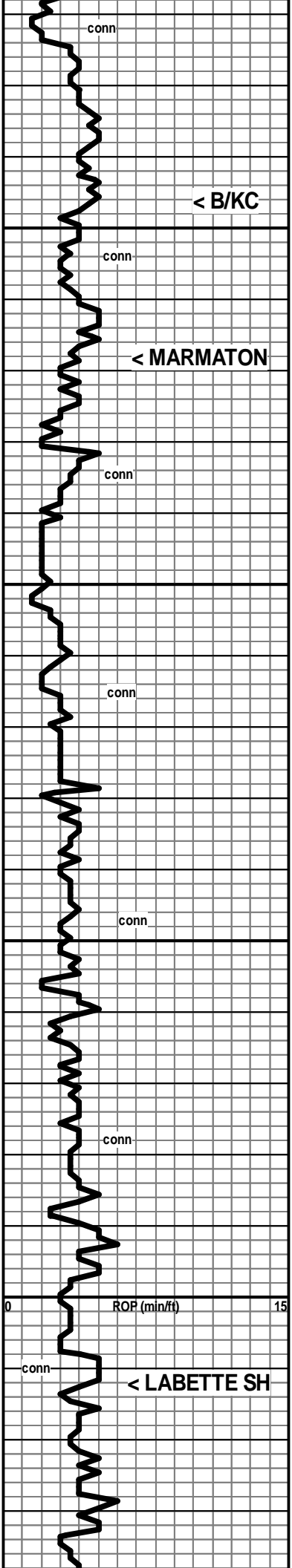
(Few pcs black shale in 4370' spl, some pyritic, some mixed with Ls)

K
(black shale in 4390' spl-only a trace, Rr pcs in 4400 ft spl)

Ls cr-tan, fn xln, pr xln por-dns, foss, abund chert: fresh, wh, subpaq

Sh gy-grnish-black, carb in pt

Ls wh-cr-pl gy, vfn-fn xln, mosly dns & firm, some soft and chalky, foss in pt, scatt calcite patches
[No Show]



[No Show]

Ls wh-cr-tan-gy, vfn-fn xln, mosly dns and firm, some chalky & softer, few pcs with xln por, foss, chert: fresh-grainy, wh-tan, opa-q-transl

----- 4446 (-2184)

Ls cr-tan-gy, vfn-fn xln, dns, foss in pt

----- 4468 (-2206)

Ls wh-cr-tan, vfn-fn xln, dns & firm to subchalky & softer, some vitreous text, foss in pt

Sh gy-dk gy

Ls wh-cr-tan-gy, vfn-fn xln, dns-pr xln por, subchalky in pt, foss in pt

[No Show]

Ls cr-tan, fn xln, dns-pr xln por, subchalky in pt, foss, some pcs ool, pr-fr crush, some grnish-gy soft shale in spls

[No Show]

Sh gy

Ls wh-cr-tan, vfn-fn xln, dns, some subgrainy text, foss

[No Show]

Ls wh-cr-tan, fn xln, dns, chalky in patches & pcs, foss in pt

Sh gy-dk gy, some marbled with Ls

Ls cr-tan, vfn-fn xln, dns, foss

Ls cr-tan, fn xln, pr xln por, foss & ool in pt, few oom pcs with pr oom por, pr-fr crush

[No Show]

Sh gy-dk gy sli carb-carb, to fiss, some Ls and calc shale

----- 4612 (-2350)

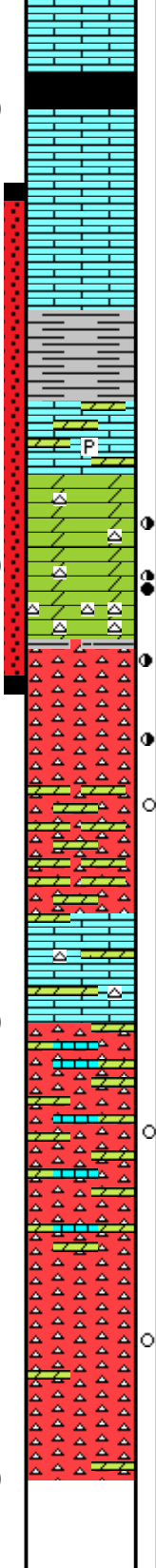
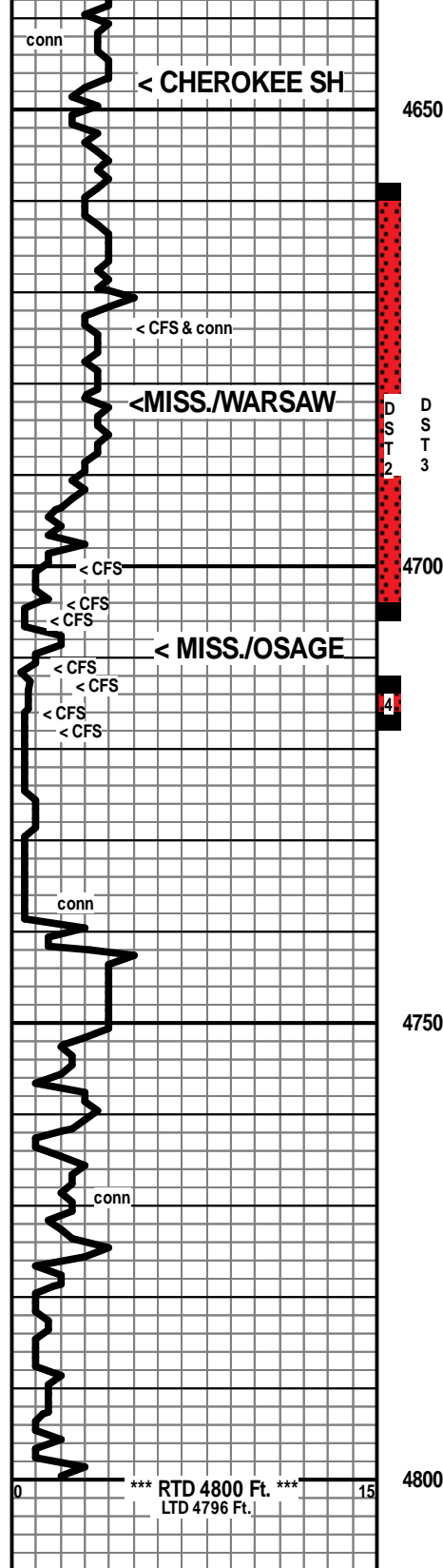
Ls wh-cr-tan, vfn-fn xln, dns, some subchalky, foss (30% shale gy-dk gy-grnish, some blk, calc in pt)

Ls cr-tan, vfn-fn xln, dns, sli foss in pt (Few pcs of black subcarb-carb shale in every spl)

7:00 AM, September 22, 2013

Mud Check, Drlg @ 4630':
 Vis Wt WL LCM PV YP
 56 9.3 8.0 2 14 18
 Chl Hd pH Solids
 10000 40 10.5 6.4

DST #2: 4658-4706 (Mississippi)
 Times: 30-75-60-90
 Initial Open: Wk+, built to 2" i.b.
 Final Open: Fr-, built to 3" i.b.
 Run: 25 20014 - 100% @ 200/...



4647 (-2385)
 (4660' spl: slight incr in dk gy-black shale, subcarb-carb)

Ls wh-cr-tan, vfn-fn xln, mostly dns & firm, some subchalky & softer, sli foss in pt

[No Show]
 4674' 40-min spl: some grn shale with brnsh marbling, calc in pt
 4780' spl: 98% Ls, 02% Shale

4690" spl: 98% Ls, wh-cr, fn xln, subchalky to firm & dns, Rr foss; 02% gy-grnsh shale
 4700' spl: same as above

4700' 20 min spl: Ls as above with approx 10% Sh-silty Sh-Shaley Siltstone, pl grn-grn, scatt pyritic, some subwaxy grnsh shale, some yell and yell/grn mix shales

4700' 40 min spl: Low % of tray Dolom cr-tan, fn xln, subsucr-sucr, pr-fr xln por, pr-fr crush, scatt glauc specks and stn; few pcs/tray of Chert: fresh-weathered, some pcs mix of each, spiculitic in pt, wh-glassy, some weath por & spic pores; more dolom in 4700 60-min spl as above

4709 (-2447)
 [4700-4704: v little chert in 20 min spl; 40-min spl mostly dolom, cr-tan, fn xln sucr, pr-fr xln por in pt, scatt sm vugs & pp por, glauc, pr-fr crush, no chert incr; Rr chert frags: fresh-subgrainy with weath patches, glassy-wh, transl-opaq

[4704-4706: 20min spl: dolom as above with increased vugs; Only a few fragments of chert in spl thru-out, mostly fresh as above with sli weath & patches of weath in pt

[4706-4711: 40-min spl: abund wh-cr chert, mostly fresh, some v sli subgrainy, foss/spic, opaq-subopaq-transl, few pcs v sli weath, still abund of dol; 60-min spl, abund fresh chert, wh-cr, opaq-transl, scatt Rr v sli eath patches

[4711-4713: some dol as above, mostly fresh chert as above, low% weath chert, wh, pr crush, spic in pt
 [4713-4718: Chert: wh, opaq, 50% fresh with some spiculitic, 25% sli weath with a grainy text and v pr crush, 25% more weathered to sli trip with pr-gd crush and rr vugs

[4718-4740: Chert: mostly fresh, some sli grainy-sli weath text with Rr patches and pcs more weathered, pr crush

[4740-4775: 75% chert, wh, mostly fresh, some v sli-sli weath, opaq, some spiculitic, 25% Ls/Dol Ls, wh-cr, fn xln, pr-fr xln por to dns, scatt glauc specks

[4740-75: V Fnt Odor, Rr patches of brn stn, NSFO]

[4775-4800: 98% Chert, mostly fresh, wh-pl gy, opaq-subop, spic in pt, some v sli weath with subgrainy text; 02% Ls/Dol Ls, wh-cr, fn xln

[No Odor, V Rr sm patches of Dull fluor, few chert pcs with patch of stn NSFO]

IHP: 2304 FHP: 2301
 IFP: 14-27 FFP: 24-27
 ISIP: 264 FSIP: 200
 BHT: 122°F

DST #3: 4658-4713 (Mississippi)
 Times: 30-75-30-90
 Initial Open: Wk, built to 1" i.b. then died after 20 min
 Final Open: Wk, surf blow, died 5 min
 Rec: 30' VSOCM: 01%o 99%w
 IHP: 2318 FHP: 2322
 IFP: 15-21 FFP: 24-27
 ISIP: 1154 FSIP: 914
 BHT: 119°F

4682 (-2420)
 [4700-above: Moderate Odor, Brt even fluor in dol, mod-dull in chert, some blk resid stn, some brn stn with sli show brn FO on brk in chert and dolom]
 [4700-4704: In Dolom: Mod + Odor, Abund brt even-patchy fluor, sli shows of oily scum and It brn gassy FO on brk; In Chert: scatt patches of blk resid stn with sli show It brn FO on brk]
 [4704-4706: Dolom, patchy-even It brn-brn to tan stn, Stg Odor, abund brt fluor, sli show of oily scum and It brn FO; Rr chert has blk patchy resid stn, sli show FO on brk]
 [4706-4711: Mild Odor, scatt brt-mod fluor, brn stn in rare patches of sli weathering, V Rr show of FO]
 [4711-4713: Mild Odor, Scatt mod fluor, It brn stn in weath chert, V sli show FO where crushable]
 [4713-4718: Mod Odor, abund mod patchy-even fluor, patchy-even It brn stn where not fresh, sli show It brn gassy FO on brk]
 [4718-4740: Fnt Odor, Rr patches of brn stn in weathered portions-with sli show of gassy FO, mostly barren]

DST #4: 4712-4718 (Mississippi)
 Times: 30-75-60-90
 Initial Open: Wk, built to 1" i.b.
 Final Open: Wk, built to 1" i.b.
 Rec: 55' WCM 35%w 65%w
 oil spots in tool
 (Chl/wtr 18000ppm Chl/mud 16000 ppm)
 IHP: 2318 FHP: 2317
 IFP: 18-24 FFP: 26-36
 ISIP: 1530 FSIP: 1514
 BHT: 122°F

RTD 4800 ft. @ 4:30 AM,
 September 25, 2013