



DRILL STEM TEST REPORT

Prepared For: **White Pine Petroleum Corp.**

110 S.Main Ste.500
Wichita KS 67202

ATTN: Pat Deenihan

Pauline Salser #2-6

6-33s-5w Harper,KS

Start Date: 2013.07.29 @ 09:33:26

End Date: 2013.07.29 @ 17:08:41

Job Ticket #: 52288 DST #: 1

Trilobite Testing, Inc
PO Box 362 Hays, KS 67601
ph: 785-625-4778 fax: 785-625-5620

Printed: 2013.08.05 @ 09:53:31



TRILOBITE TESTING, INC.

DRILL STEM TEST REPORT

White Pine Petroleum Corp.

6-33s-5w Harper,KS

110 S.Main Ste.500
Wichita KS 67202

Pauline Salsler #2-6

ATTN: Pat Deenihan

Job Ticket: 52288

DST#: 1

Test Start: 2013.07.29 @ 09:33:26

GENERAL INFORMATION:

Formation: **LKC B**

Deviated: No Whipstock: ft (KB)

Time Tool Opened: 11:13:56

Time Test Ended: 17:08:41

Test Type: Conventional Bottom Hole (Initial)

Tester: Gary Pevoteaux

Unit No: 56

Interval: 3708.00 ft (KB) To 3725.00 ft (KB) (TVD)

Reference Elevations: 1345.00 ft (KB)

Total Depth: 3725.00 ft (KB) (TVD)

1335.00 ft (CF)

Hole Diameter: 7.88 inches Hole Condition: Poor

KB to GR/CF: 10.00 ft

Serial #: 8352 Inside

Press @ Run Depth: 173.32 psig @ 3709.00 ft (KB)

Capacity: 8000.00 psig

Start Date: 2013.07.29

End Date:

2013.07.29

Last Calib.:

2013.07.29

Start Time: 09:33:31

End Time:

17:08:40

Time On Btm:

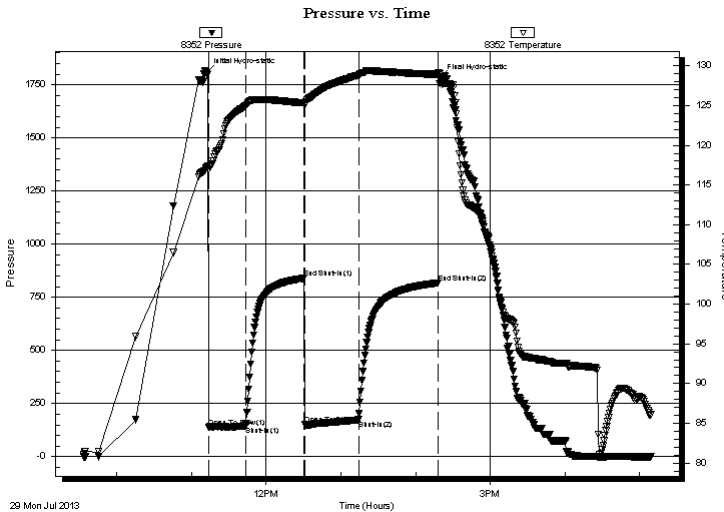
2013.07.29 @ 11:11:56

Time Off Btm:

2013.07.29 @ 14:19:56

TEST COMMENT: IF: Strong blow . B.O.B. in 13 mins.
IS: Weak blow . 1 - 2 1/2".
FF: Strong blow . B.O.B. in 20 secs.
FS: Fair blow . 3 - 6".

PRESSURE SUMMARY



Time (Min.)	Pressure (psig)	Temp (deg F)	Annotation
0	1805.69	117.16	Initial Hydro-static
2	139.57	117.00	Open To Flow (1)
32	144.75	124.99	Shut-In(1)
79	839.77	125.33	End Shut-In(1)
79	150.84	125.08	Open To Flow (2)
123	173.32	128.84	Shut-In(2)
186	817.56	128.93	End Shut-In(2)
188	1781.19	128.30	Final Hydro-static

Recovery

Length (ft)	Description	Volume (bbl)
120.00	GW&MCO 42%g 12%w 12%m 24%o	0.59
230.00	GOCM 58%g 7%o 35%m	3.23
150.00	SGCM 4%g 96%m	2.10
0.00	2550 ft.of GIP	0.00

Gas Rates

	Choke (inches)	Pressure (psig)	Gas Rate (Mcf/d)



TRILOBITE TESTING, INC.

DRILL STEM TEST REPORT

White Pine Petroleum Corp.

6-33s-5w Harper, KS

110 S. Main Ste. 500
Wichita KS 67202

Pauline Salsler #2-6

Job Ticket: 52288 **DST#: 1**

ATTN: Pat Deenihan

Test Start: 2013.07.29 @ 09:33:26

GENERAL INFORMATION:

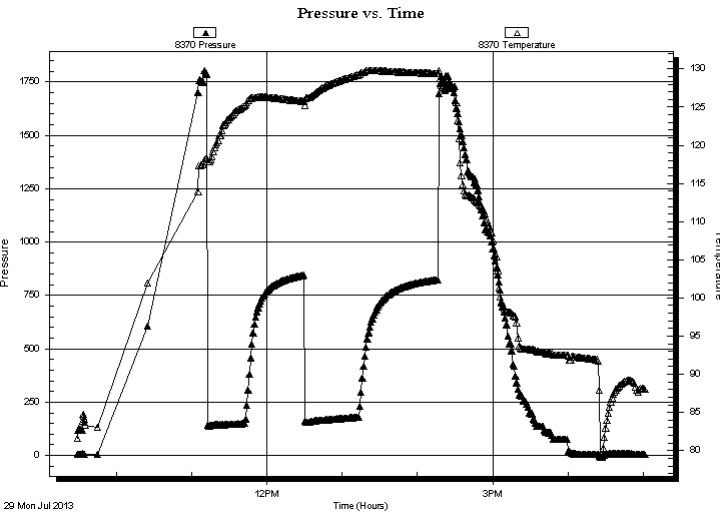
Formation: **LKC B**
 Deviated: No Whipstock: ft (KB)
 Test Type: Conventional Bottom Hole (Initial)
 Time Tool Opened: 11:13:56
 Tester: Gary Pevoteaux
 Time Test Ended: 17:08:41
 Unit No: 56
Interval: 3708.00 ft (KB) To 3725.00 ft (KB) (TVD)
 Reference Elevations: 1345.00 ft (KB)
 Total Depth: 3725.00 ft (KB) (TVD)
 1335.00 ft (CF)
 Hole Diameter: 7.88 inches
 Hole Condition: Poor
 KB to GR/CF: 10.00 ft

Serial #: 8370

Outside

Press @ Run Depth: psig @ 3709.00 ft (KB) Capacity: 8000.00 psig
 Start Date: 2013.07.29 End Date: 2013.07.29 Last Calib.: 2013.07.29
 Start Time: 09:29:13 End Time: 17:01:52 Time On Btm:
 Time Off Btm:

TEST COMMENT: IF: Strong blow . B.O.B. in 13 mins.
 IS: Weak blow . 1 - 2 1/2".
 FF: Strong blow . B.O.B. in 20 secs.
 FS: Fair blow . 3 - 6".



PRESSURE SUMMARY

Time (Min.)	Pressure (psig)	Temp (deg F)	Annotation

Recovery

Length (ft)	Description	Volume (bbl)
120.00	GW&MCO 42%g 12%w 12%m 24%o	0.59
230.00	GOCM 58%g 7%o 35%m	3.23
150.00	SGCM 4%g 96%m	2.10
0.00	2550 ft. of GIP	0.00

Gas Rates

Choke (inches)	Pressure (psig)	Gas Rate (Mcf/d)



**TRILOBITE
TESTING, INC.**

DRILL STEM TEST REPORT

TOOL DIAGRAM

White Pine Petroleum Corp.

6-33s-5w Harper, KS

110 S. Main Ste. 500
Wichita KS 67202

Pauline Salsler #2-6

Job Ticket: 52288

DST#: 1

ATTN: Pat Deenihan

Test Start: 2013.07.29 @ 09:33:26

Tool Information

Drill Pipe:	Length: 3579.00 ft	Diameter: 3.80 inches	Volume: 50.20 bbl	Tool Weight: 2400.00 lb
Heavy Wt. Pipe:	Length: 0.00 ft	Diameter: 0.00 inches	Volume: 0.00 bbl	Weight set on Packer: 24000.00 lb
Drill Collar:	Length: 120.00 ft	Diameter: 2.25 inches	Volume: 0.59 bbl	Weight to Pull Loose: 83000.00 lb
			<u>Total Volume: 50.79 bbl</u>	Tool Chased 2.00 ft
Drill Pipe Above KB:	19.00 ft			String Weight: Initial 62000.00 lb
Depth to Top Packer:	3708.00 ft			Final 65000.00 lb
Depth to Bottom Packer:	ft			
Interval between Packers:	18.00 ft			
Tool Length:	46.00 ft			
Number of Packers:	2	Diameter: 6.75 inches		

Tool Comments:

Tool Description	Length (ft)	Serial No.	Position	Depth (ft)	Accum. Lengths
------------------	-------------	------------	----------	------------	----------------

C.O. Sub	1.00			3681.00	
Shut in tool	5.00			3686.00	
HMV	5.00			3691.00	
Jars	5.00			3696.00	
Safety Joint	3.00			3699.00	
Packer	4.00			3703.00	28.00 Bottom Of Top Packer
Packer	5.00			3708.00	
Stubb	1.00			3709.00	
Recorder	0.00	8352	Inside	3709.00	
Recorder	0.00	8370	Outside	3709.00	
Perforations	12.00			3721.00	
Bullnose	5.00			3726.00	18.00 Bottom Packers & Anchor

Total Tool Length: 46.00



**TRILOBITE
TESTING, INC.**

DRILL STEM TEST REPORT

FLUID SUMMARY

White Pine Petroleum Corp.

6-33s-5w Harper,KS

110 S.Main Ste.500
Wichita KS 67202

Pauline Salsler #2-6

Job Ticket: 52288

DST#: 1

ATTN: Pat Deenihan

Test Start: 2013.07.29 @ 09:33:26

Mud and Cushion Information

Mud Type: Gel Chem

Cushion Type:

Oil API:

deg API

Mud Weight: 9.00 lb/gal

Cushion Length:

ft

Water Salinity:

4000 ppm

Viscosity: 56.00 sec/qt

Cushion Volume:

bbbl

Water Loss: 8.76 in³

Gas Cushion Type:

Resistivity: 0.00 ohm.m

Gas Cushion Pressure:

psig

Salinity: 5000.00 ppm

Filter Cake: 0.20 inches

Recovery Information

Recovery Table

Length ft	Description	Volume bbbl
120.00	GW&MCO 42%g 12%w 12%m 24%o	0.590
230.00	GOCM 58%g 7%o 35%m	3.226
150.00	SGCM 4%g 96%m	2.104
0.00	2550 ft.of GIP	0.000

Total Length: 500.00 ft

Total Volume: 5.920 bbl

Num Fluid Samples: 0

Num Gas Bombs: 0

Serial #: none

Laboratory Name:

Laboratory Location:

Recovery Comments:

Serial #: 8352

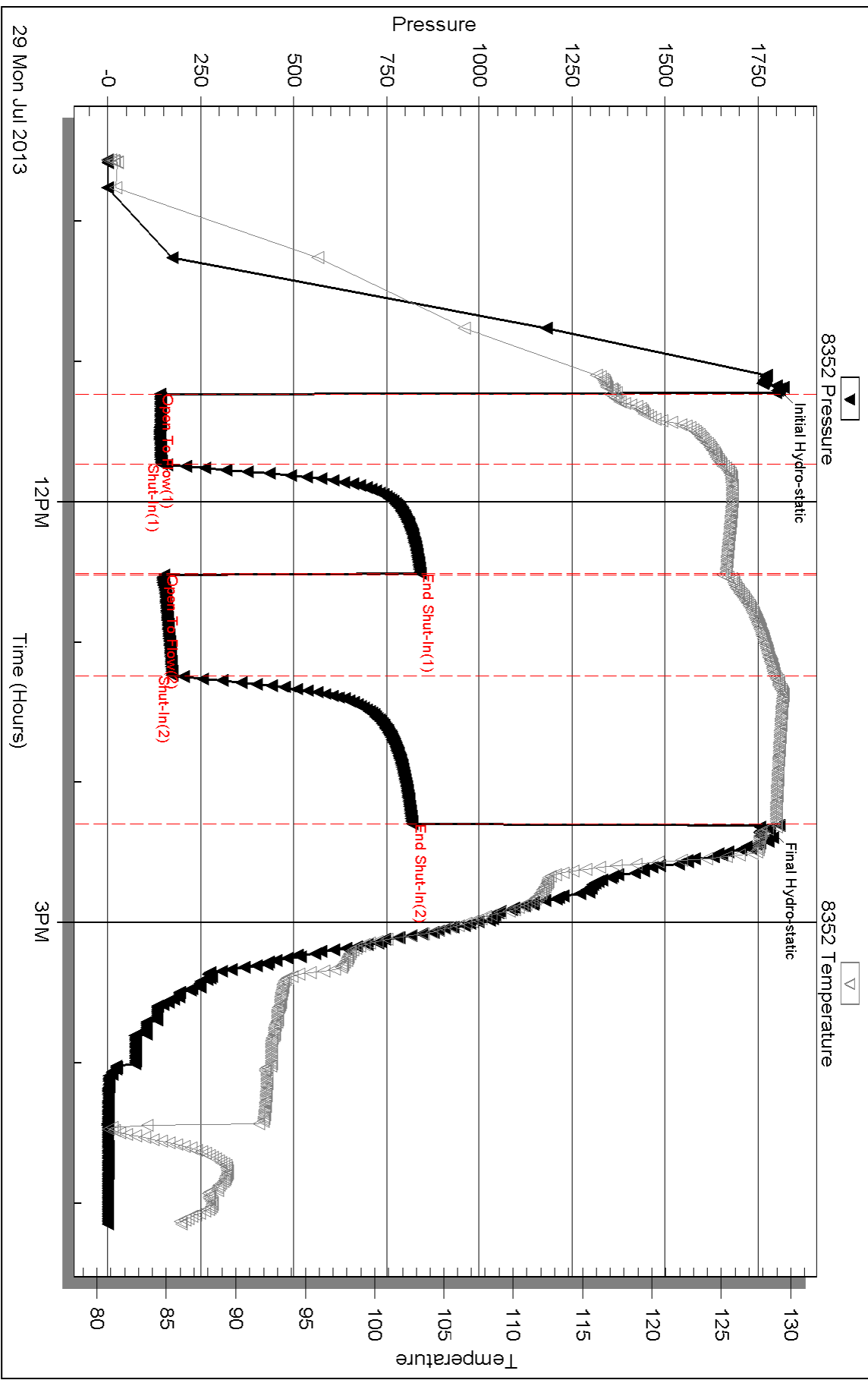
Inside

White Pine Petroleum Corp.

Pauline Salsar #2-6

DST Test Number: 1

Pressure vs. Time



Triobite Testing, Inc

Ref. No: 52288

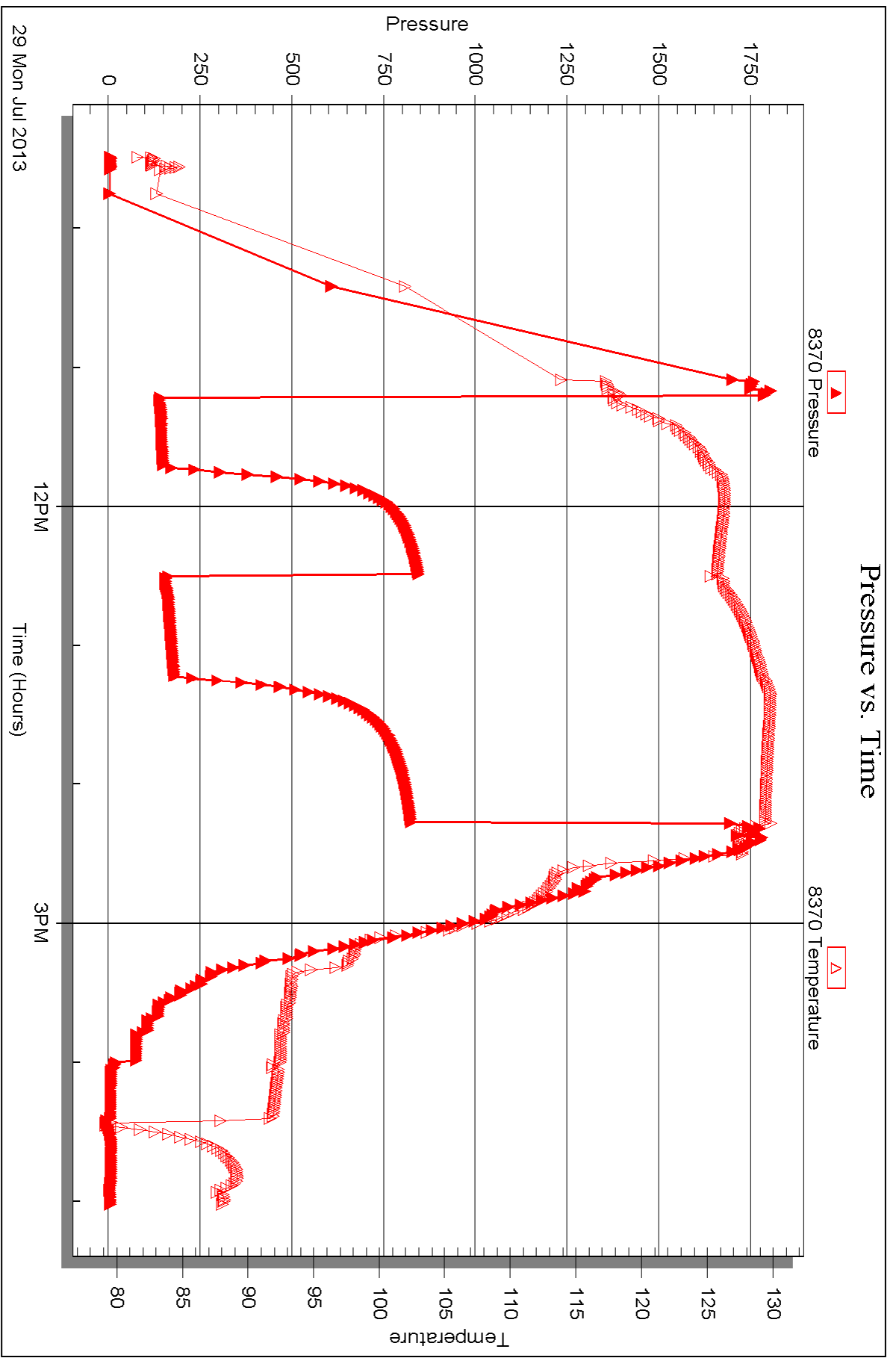
Printed: 2013.08.05 @ 09:53:34

Serial #: 8370

Outside White Pine Petroleum Corp.

Pauline Salsler #2-6

DST Test Number: 1



29 Mon Jul 2013

Triobite Testing, Inc

Ref. No: 52288

Printed: 2013.08.05 @ 09:53:34



DRILL STEM TEST REPORT

Prepared For: **White Pine Petroleum Corp.**

110 S.Main Ste.500
Wichita KS 67202

ATTN: Pat Deenihan

Pauline Salser #2-6

6-33s-5w Harper,KS

Start Date: 2013.08.01 @ 06:41:46

End Date: 2013.08.01 @ 14:32:16

Job Ticket #: 52289 DST #: 2

Trilobite Testing, Inc
PO Box 362 Hays, KS 67601
ph: 785-625-4778 fax: 785-625-5620

Printed: 2013.08.05 @ 09:52:43

White Pine Petroleum Corp. 6-33s-5w Harper,KS Pauline Salser #2-6 DST # 2 Miss. 2013.08.01



TRILOBITE TESTING, INC.

DRILL STEM TEST REPORT

White Pine Petroleum Corp.

6-33s-5w Harper, KS

110 S. Main Ste. 500
Wichita KS 67202

Pauline Salsler #2-6

ATTN: Pat Deenihan

Job Ticket: 52289

DST#: 2

Test Start: 2013.08.01 @ 06:41:46

GENERAL INFORMATION:

Formation: **Miss.**
 Deviated: No Whipstock: ft (KB)
 Time Tool Opened: 08:38:46
 Time Test Ended: 14:32:16
 Interval: **4372.00 ft (KB) To 4381.00 ft (KB) (TVD)**
 Total Depth: 4381.00 ft (KB) (TVD)
 Hole Diameter: 7.88 inches Hole Condition: Poor
 Test Type: Conventional Bottom Hole (Reset)
 Tester: Gary Pevoteaux
 Unit No: 56
 Reference Elevations: 1345.00 ft (KB)
 1335.00 ft (CF)
 KB to GR/CF: 10.00 ft

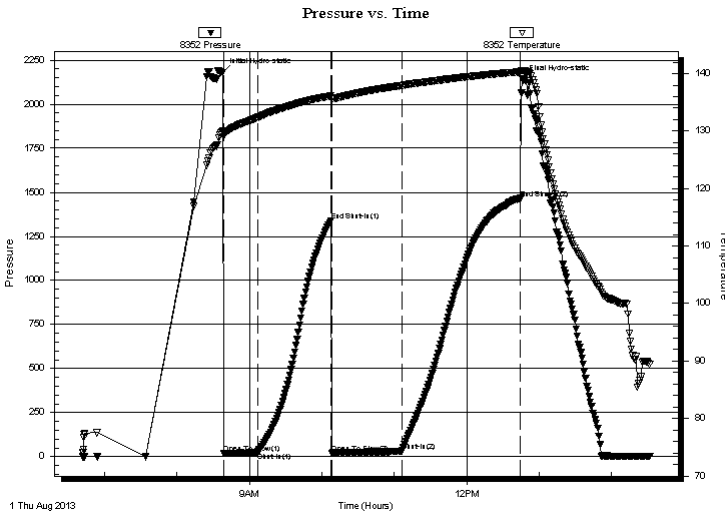
Serial #: 8352

Inside

Press @ Run Depth: 29.31 psig @ 4373.00 ft (KB) Capacity: 8000.00 psig
 Start Date: 2013.08.01 End Date: 2013.08.01 Last Calib.: 2013.08.01
 Start Time: 06:41:51 End Time: 14:32:15 Time On Btm: 2013.08.01 @ 08:37:46
 Time Off Btm: 2013.08.01 @ 12:46:01

TEST COMMENT: IF: Weak blow . Slow increase to 4".
 IS: No blow .
 FF: Strong blow . B.O.B. in 12 mins.
 FS: Weak blow . 1 - 2".

PRESSURE SUMMARY



Time (Min.)	Pressure (psig)	Temp (deg F)	Annotation
0	2177.94	129.99	Initial Hydro-static
1	16.51	129.61	Open To Flow (1)
29	21.68	132.33	Shut-In(1)
90	1338.83	136.13	End Shut-In(1)
91	19.38	135.70	Open To Flow (2)
149	29.31	137.92	Shut-In(2)
247	1465.43	140.30	End Shut-In(2)
249	2142.37	140.55	Final Hydro-static

Recovery

Length (ft)	Description	Volume (bbl)
50.00	SOCGM 2%o 13%g 85%m	0.25
0.00	700 ft. of GIP	0.00

* Recovery from multiple tests

Gas Rates

Choke (inches)	Pressure (psig)	Gas Rate (Mcf/d)



**TRILOBITE
TESTING, INC.**

DRILL STEM TEST REPORT

White Pine Petroleum Corp.

6-33s-5w Harper, KS

110 S. Main Ste. 500
Wichita KS 67202

Pauline Salser #2-6

ATTN: Pat Deenihan

Job Ticket: 52289

DST#: 2

Test Start: 2013.08.01 @ 06:41:46

GENERAL INFORMATION:

Formation: **Miss.**

Deviated: No Whipstock: ft (KB)

Time Tool Opened: 08:38:46

Time Test Ended: 14:32:16

Test Type: Conventional Bottom Hole (Reset)

Tester: Gary Pevoteaux

Unit No: 56

Interval: 4372.00 ft (KB) To 4381.00 ft (KB) (TVD)

Reference Elevations: 1345.00 ft (KB)

Total Depth: 4381.00 ft (KB) (TVD)

1335.00 ft (CF)

Hole Diameter: 7.88 inches Hole Condition: Poor

KB to GR/CF: 10.00 ft

Serial #: 8370 Outside

Press @ Run Depth: psig @ 4373.00 ft (KB)

Capacity: 8000.00 psig

Start Date: 2013.08.01 End Date: 2013.08.01

Last Calib.: 2013.08.01

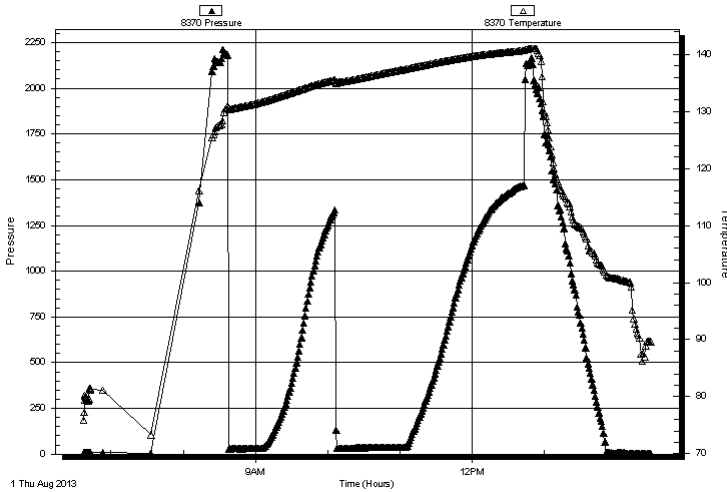
Start Time: 06:37:20 End Time: 14:27:59

Time On Btm:

Time Off Btm:

TEST COMMENT: IF: Weak blow . Slow increase to 4".
IS: No blow .
FF: Strong blow . B.O.B. in 12 mins.
FS: Weak blow . 1 - 2".

Pressure vs. Time



PRESSURE SUMMARY

Time (Min.)	Pressure (psig)	Temp (deg F)	Annotation
-------------	-----------------	--------------	------------

Recovery

Length (ft)	Description	Volume (bbl)
50.00	SOCGM 2%o 13%g 85%m	0.25
0.00	700 ft. of GIP	0.00

Gas Rates

	Choke (inches)	Pressure (psig)	Gas Rate (Mcf/d)
--	----------------	-----------------	------------------

* Recovery from multiple tests



**TRILOBITE
TESTING, INC.**

DRILL STEM TEST REPORT

TOOL DIAGRAM

White Pine Petroleum Corp.

6-33s-5w Harper, KS

110 S. Main Ste. 500
Wichita KS 67202

Pauline Salsler #2-6

Job Ticket: 52289

DST#: 2

ATTN: Pat Deenihan

Test Start: 2013.08.01 @ 06:41:46

Tool Information

Drill Pipe:	Length: 4235.00 ft	Diameter: 3.80 inches	Volume: 59.41 bbl	Tool Weight: 2400.00 lb
Heavy Wt. Pipe:	Length: 0.00 ft	Diameter: 0.00 inches	Volume: 0.00 bbl	Weight set on Packer: 24000.00 lb
Drill Collar:	Length: 120.00 ft	Diameter: 2.25 inches	Volume: 0.59 bbl	Weight to Pull Loose: 79000.00 lb
			<u>Total Volume: 60.00 bbl</u>	Tool Chased 0.00 ft
Drill Pipe Above KB:	3.00 ft			String Weight: Initial 67000.00 lb
Depth to Top Packer:	4372.00 ft			Final 68000.00 lb
Depth to Bottom Packer:	ft			
Interval between Packers:	9.00 ft			
Tool Length:	29.00 ft			
Number of Packers:	2	Diameter: 6.75 inches		

Tool Comments:

Tool Description	Length (ft)	Serial No.	Position	Depth (ft)	Accum. Lengths
------------------	-------------	------------	----------	------------	----------------

C.O. Sub	1.00			4353.00	
Shut in tool	5.00			4358.00	
HMV	5.00			4363.00	
Packer	4.00			4367.00	20.00 Bottom Of Top Packer
Packer	5.00			4372.00	
Stubb	1.00			4373.00	
Recorder	0.00	8352	Inside	4373.00	
Recorder	0.00	8370	Outside	4373.00	
Perforations	3.00			4376.00	
Bullnose	5.00			4381.00	9.00 Bottom Packers & Anchor
Total Tool Length:	29.00				



**TRILOBITE
TESTING, INC.**

DRILL STEM TEST REPORT

FLUID SUMMARY

White Pine Petroleum Corp.

6-33s-5w Harper, KS

110 S. Main Ste. 500
Wichita KS 67202

Pauline Salsler #2-6

Job Ticket: 52289

DST#: 2

ATTN: Pat Deenihan

Test Start: 2013.08.01 @ 06:41:46

Mud and Cushion Information

Mud Type: Gel Chem

Cushion Type:

Oil API:

deg API

Mud Weight: 9.00 lb/gal

Cushion Length:

ft

Water Salinity:

3000 ppm

Viscosity: 48.00 sec/qt

Cushion Volume:

bbbl

Water Loss: 8.78 in³

Gas Cushion Type:

Resistivity: 0.00 ohm.m

Gas Cushion Pressure:

psig

Salinity: 3000.00 ppm

Filter Cake: 0.20 inches

Recovery Information

Recovery Table

Length ft	Description	Volume bbl
50.00	SOCGM 2%o 13%g 85%m	0.246
0.00	700 ft.of GIP	0.000

Total Length: 50.00 ft Total Volume: 0.246 bbl

Num Fluid Samples: 0

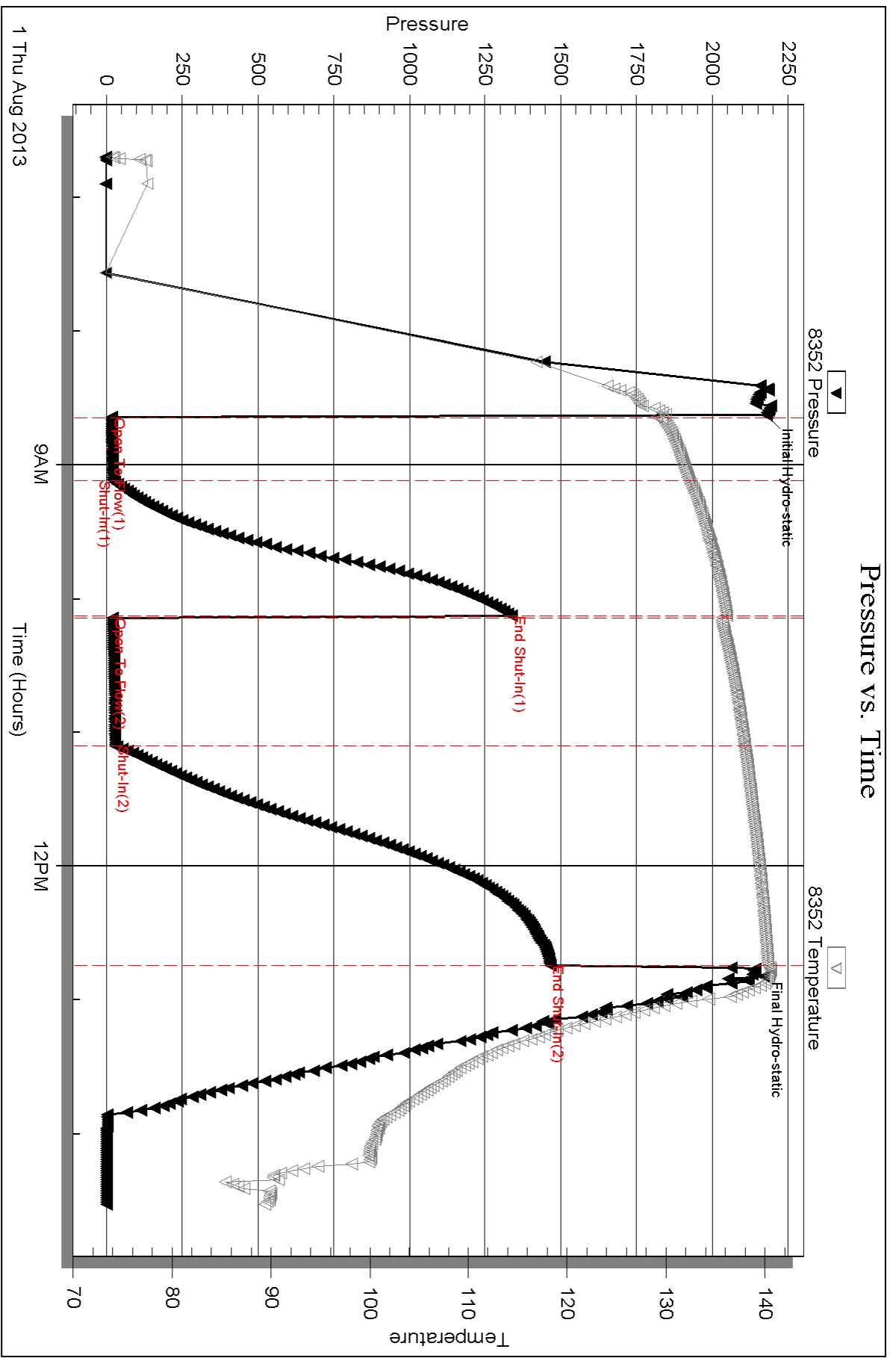
Num Gas Bombs: 0

Serial #: none

Laboratory Name:

Laboratory Location:

Recovery Comments:

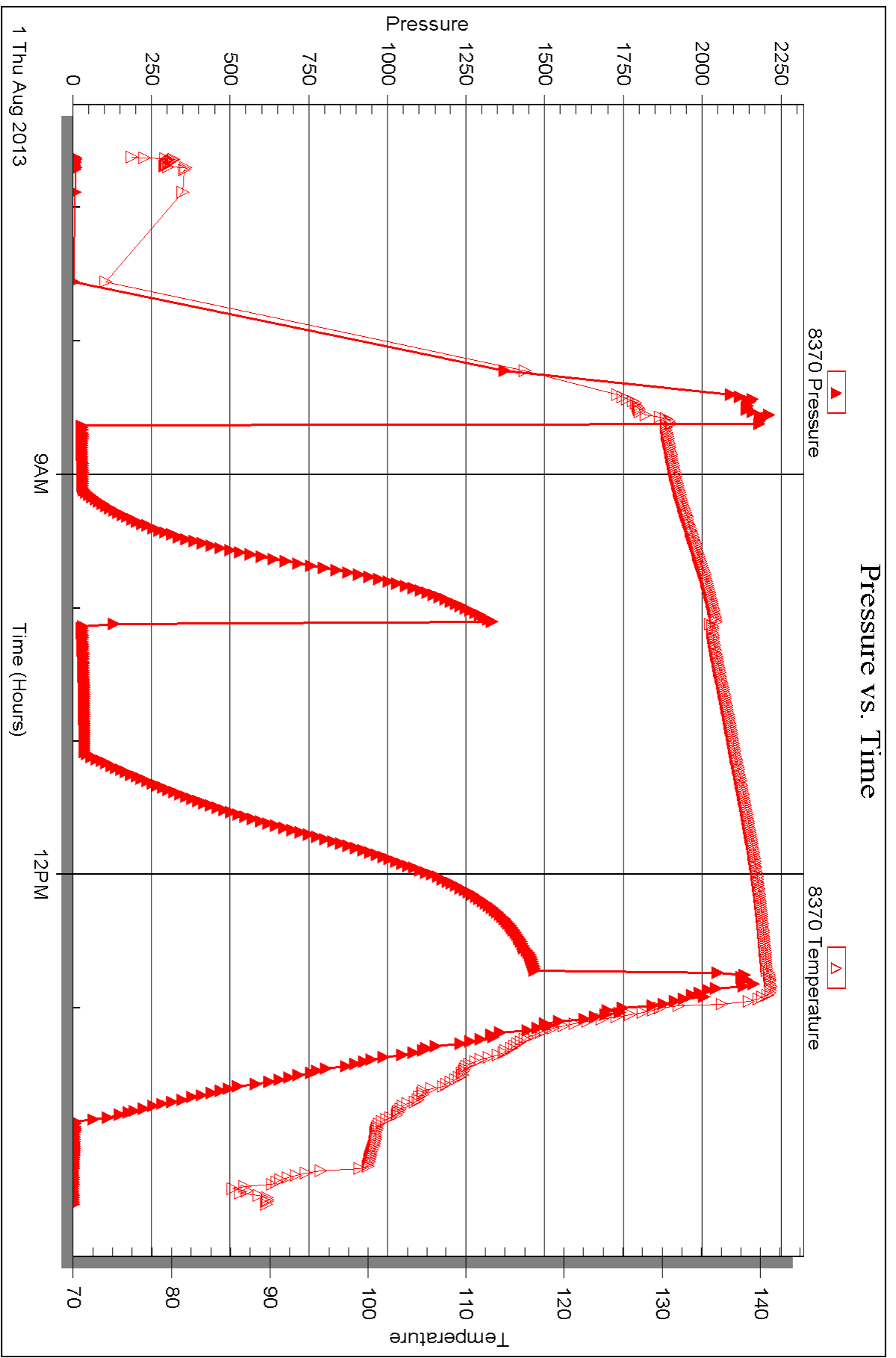


Serial #: 8370

Outside White Pine Petroleum Corp.

Pauline Salser #2-6

DST Test Number: 2





DRILL STEM TEST REPORT

Prepared For: **White Pine Petroleum Corp.**

110 S.Main Ste.500
Wichita KS 67202

ATTN: Pat Deenihan

Pauline Salser #2-6

6-33s-5w Harper,KS

Start Date: 2013.08.01 @ 20:35:21

End Date: 2013.08.02 @ 05:49:06

Job Ticket #: 52290 DST #: 3

Trilobite Testing, Inc
PO Box 362 Hays, KS 67601
ph: 785-625-4778 fax: 785-625-5620

Printed: 2013.08.05 @ 09:51:48



TRILOBITE TESTING, INC.

DRILL STEM TEST REPORT

White Pine Petroleum Corp.

6-33s-5w Harper, KS

110 S. Main Ste. 500
Wichita KS 67202

Pauline Salsler #2-6

ATTN: Pat Deenihan

Job Ticket: 52290

DST#: 3

Test Start: 2013.08.01 @ 20:35:21

GENERAL INFORMATION:

Formation: **Miss.**

Deviated: No Whipstock: ft (KB)

Time Tool Opened: 22:28:36

Time Test Ended: 05:49:06

Test Type: Conventional Bottom Hole (Reset)

Tester: Gary Pevoteaux

Unit No: 56

Interval: 4375.00 ft (KB) To 4388.00 ft (KB) (TVD)

Reference Elevations: 1345.00 ft (KB)

Total Depth: 4388.00 ft (KB) (TVD)

1335.00 ft (CF)

Hole Diameter: 7.88 inches Hole Condition: Poor

KB to GR/CF: 10.00 ft

Serial #: 8352 Inside

Press @ Run Depth: 109.25 psig @ 4376.00 ft (KB)

Capacity: 8000.00 psig

Start Date: 2013.08.01

End Date:

2013.08.02

Last Calib.:

2013.08.02

Start Time: 20:35:26

End Time:

05:49:06

Time On Btm:

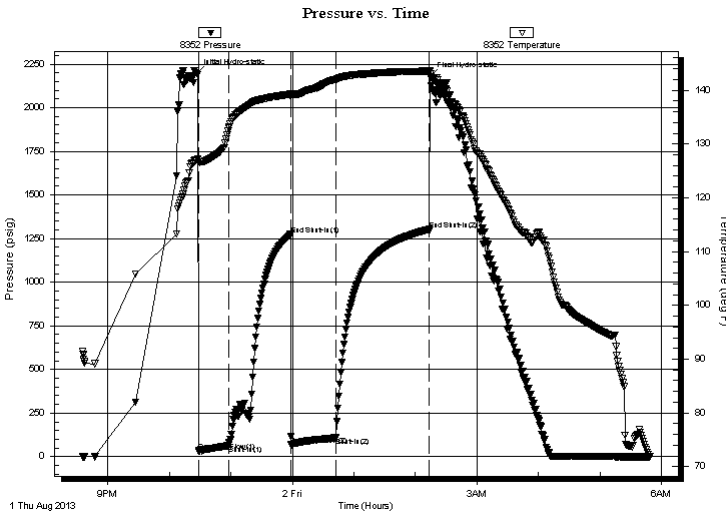
2013.08.01 @ 22:26:36

Time Off Btm:

2013.08.02 @ 02:14:36

TEST COMMENT: IF: Strong blow . B.O.B. in 35 secs.
IS: Strong blow . B.O.B.
FF: Strong blow . B.O.B. in 5 secs.
FS: Strong blow . B.O.B. GTS 20 mins in to FSIP

PRESSURE SUMMARY



Time (Min.)	Pressure (psig)	Temp (deg F)	Annotation
0	2193.97	127.11	Initial Hydro-static
2	30.74	126.62	Open To Flow (1)
32	63.80	132.95	Shut-In(1)
92	1274.08	139.29	End Shut-In(1)
92	67.47	138.93	Open To Flow (2)
136	109.25	142.00	Shut-In(2)
227	1302.57	143.56	End Shut-In(2)
228	2176.89	143.00	Final Hydro-static

Recovery

Length (ft)	Description	Volume (bbl)
60.00	MW/w/o specs 14% m 86% w / Rw .07 @ 83	0.30
175.00	GOCM 22% g 28% o 50% m	1.91

* Recovery from multiple tests

Gas Rates

Choke (inches)	Pressure (psig)	Gas Rate (Mcf/d)



**TRILOBITE
TESTING, INC.**

DRILL STEM TEST REPORT

White Pine Petroleum Corp.

6-33s-5w Harper, KS

110 S. Main Ste. 500
Wichita KS 67202

Pauline Salser #2-6

ATTN: Pat Deenihan

Job Ticket: 52290

DST#: 3

Test Start: 2013.08.01 @ 20:35:21

GENERAL INFORMATION:

Formation: **Miss.**
 Deviated: No Whipstock: ft (KB)
 Time Tool Opened: 22:28:36
 Time Test Ended: 05:49:06
 Interval: **4375.00 ft (KB) To 4388.00 ft (KB) (TVD)**
 Total Depth: 4388.00 ft (KB) (TVD)
 Hole Diameter: 7.88 inches Hole Condition: Poor
 Test Type: Conventional Bottom Hole (Reset)
 Tester: Gary Pevoteaux
 Unit No: 56
 Reference Elevations: 1345.00 ft (KB)
 1335.00 ft (CF)
 KB to GR/CF: 10.00 ft

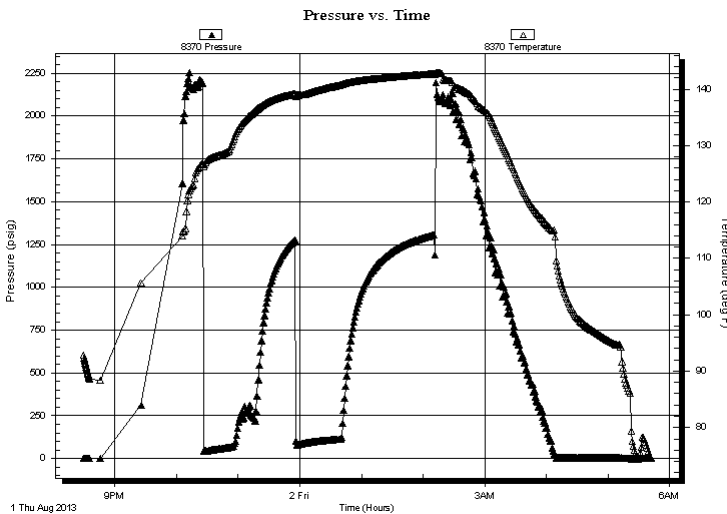
Serial #: 8370

Outside

Press @ RunDepth: psig @ 4376.00 ft (KB) Capacity: 8000.00 psig
 Start Date: 2013.08.01 End Date: 2013.08.02 Last Calib.: 2013.08.02
 Start Time: 20:29:34 End Time: 05:41:44 Time On Btm:
 Time Off Btm:

TEST COMMENT: IF: Strong blow . B.O.B. in 35 secs.
 IS: Strong blow . B.O.B.
 FF: Strong blow . B.O.B. in 5 secs.
 FS: Strong blow . B.O.B. GTS 20 mins in to FSIP

PRESSURE SUMMARY



Time (Min.)	Pressure (psig)	Temp (deg F)	Annotation

Recovery

Length (ft)	Description	Volume (bbl)
60.00	MMW/o specs 14% m 86% w / Rw .07 @ 3	0.30
175.00	GOCM 22% g 28% o 50% m	1.91

Gas Rates

Choke (inches)	Pressure (psig)	Gas Rate (Mcf/d)

* Recovery from multiple tests



**TRILOBITE
TESTING, INC.**

DRILL STEM TEST REPORT

TOOL DIAGRAM

White Pine Petroleum Corp.

6-33s-5w Harper, KS

110 S. Main Ste. 500
Wichita KS 67202

Pauline Salsler #2-6

Job Ticket: 52290

DST#: 3

ATTN: Pat Deenihan

Test Start: 2013.08.01 @ 20:35:21

Tool Information

Drill Pipe:	Length: 4266.00 ft	Diameter: 3.80 inches	Volume: 59.84 bbl	Tool Weight: 2400.00 lb
Heavy Wt. Pipe:	Length: 0.00 ft	Diameter: 0.00 inches	Volume: 0.00 bbl	Weight set on Packer: 24000.00 lb
Drill Collar:	Length: 120.00 ft	Diameter: 2.25 inches	Volume: 0.59 bbl	Weight to Pull Loose: 83000.00 lb
			<u>Total Volume: 60.43 bbl</u>	Tool Chased 0.00 ft
Drill Pipe Above KB:	31.00 ft			String Weight: Initial 67000.00 lb
Depth to Top Packer:	4375.00 ft			Final 68500.00 lb
Depth to Bottom Packer:	ft			
Interval between Packers:	13.00 ft			
Tool Length:	33.00 ft			
Number of Packers:	2	Diameter: 6.75 inches		
Tool Comments:				

Tool Description	Length (ft)	Serial No.	Position	Depth (ft)	Accum. Lengths
------------------	-------------	------------	----------	------------	----------------

C.O. Sub	1.00			4356.00	
Shut in tool	5.00			4361.00	
HMV	5.00			4366.00	
Packer	4.00			4370.00	20.00 Bottom Of Top Packer
Packer	5.00			4375.00	
Stubb	1.00			4376.00	
Recorder	0.00	8352	Inside	4376.00	
Recorder	0.00	8370	Outside	4376.00	
Perforations	7.00			4383.00	
Bullnose	5.00			4388.00	13.00 Bottom Packers & Anchor
Total Tool Length:	33.00				



**TRILOBITE
TESTING, INC.**

DRILL STEM TEST REPORT

FLUID SUMMARY

White Pine Petroleum Corp.

6-33s-5w Harper, KS

110 S. Main Ste. 500
Wichita KS 67202

Pauline Salsler #2-6

Job Ticket: 52290

DST#: 3

ATTN: Pat Deenihan

Test Start: 2013.08.01 @ 20:35:21

Mud and Cushion Information

Mud Type: Gel Chem

Cushion Type:

Oil API:

deg API

Mud Weight: 9.00 lb/gal

Cushion Length:

ft

Water Salinity:

94000 ppm

Viscosity: 48.00 sec/qt

Cushion Volume:

bbbl

Water Loss: 8.78 in³

Gas Cushion Type:

Resistivity: 0.00 ohm.m

Gas Cushion Pressure:

psig

Salinity: 3000.00 ppm

Filter Cake: 0.20 inches

Recovery Information

Recovery Table

Length ft	Description	Volume bbl
60.00	MWw /o specs 14% m 86% w / Rw .07 @ 83deg	0.295
175.00	GOCM 22% g 28% o 50% m	1.908

Total Length: 235.00 ft

Total Volume: 2.203 bbl

Num Fluid Samples: 0

Num Gas Bombs: 0

Serial #: none

Laboratory Name:

Laboratory Location:

Recovery Comments:

Serial #: 8352

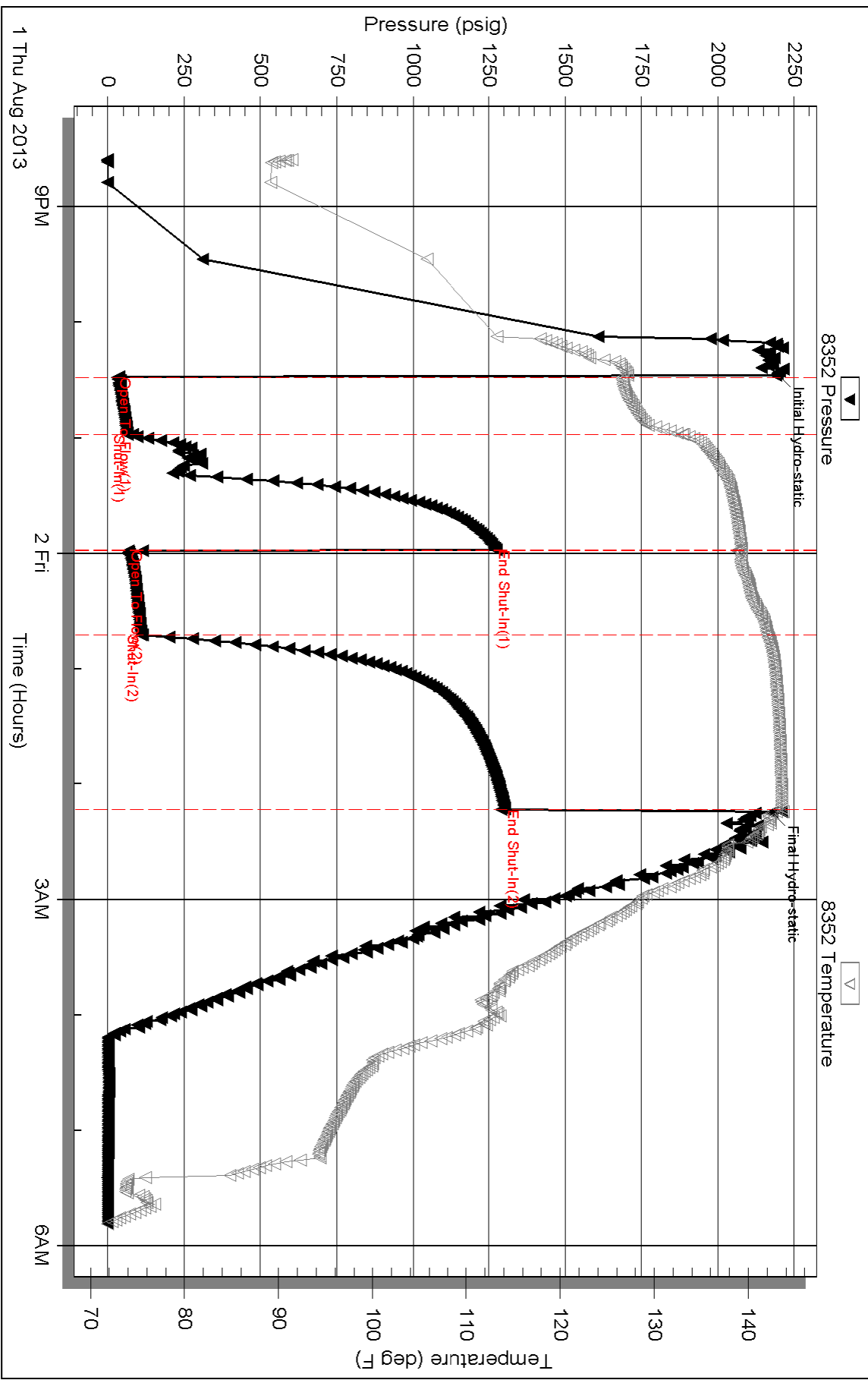
Inside

White Pine Petroleum Corp.

Pauline Salsar #2-6

DST Test Number: 3

Pressure vs. Time

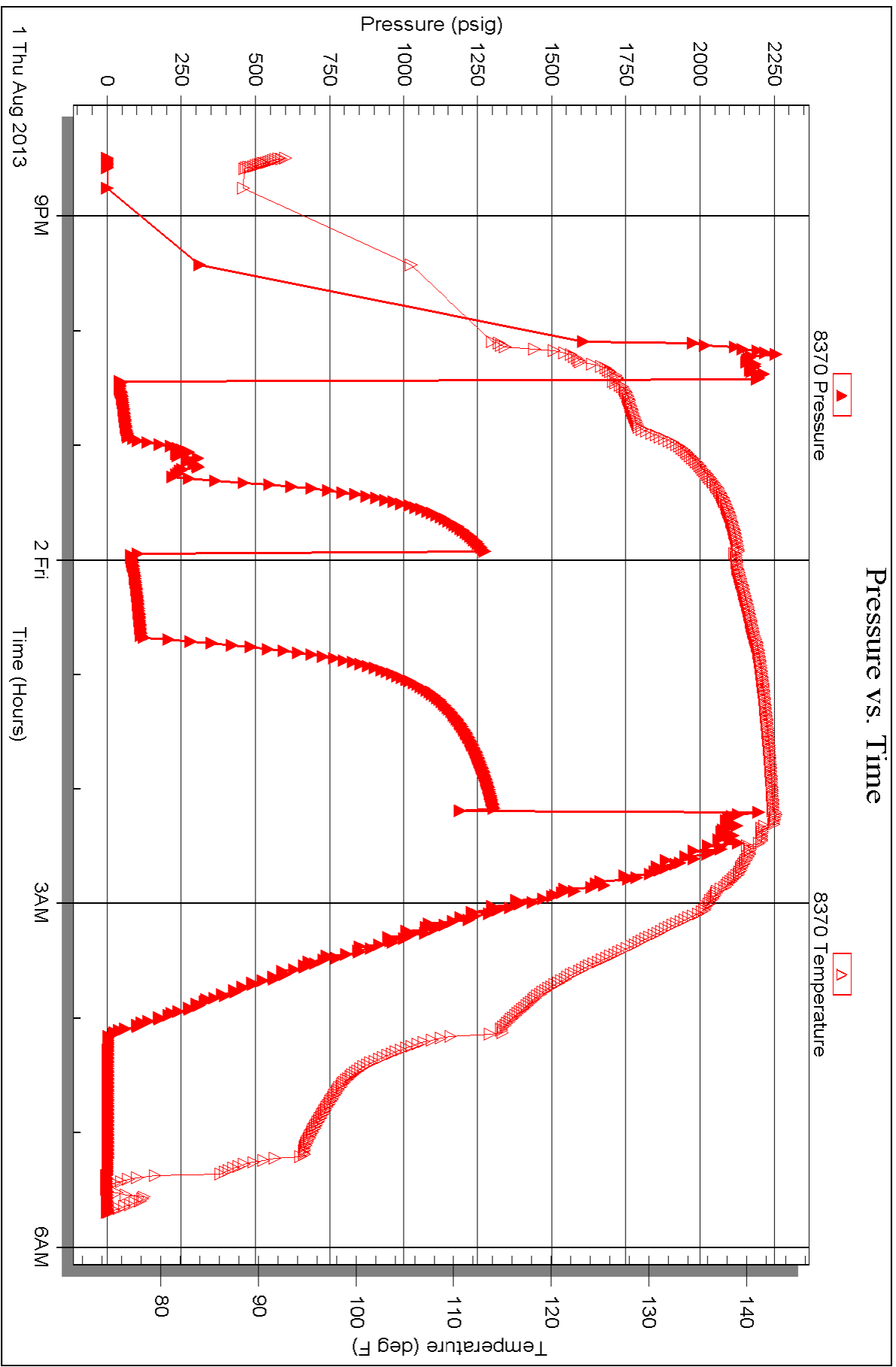


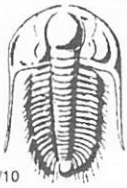
Serial #: 8370

Outside White Pine Petroleum Corp.

Pauline Salsler #2-6

DST Test Number: 3





TRILOBITE TESTING INC.

1515 Commerce Parkway • Hays, Kansas 67601

Test Ticket

NO. 52288

Well Name & No. PAULINE SALSER #2-C Test No. 1 Date 7-29-13
 Company WHITE PINE PETL. CORP. Elevation 1345 KB 1335 GL
 Address 110 S. MAIN ST. STE. 500, WICHITA KS. 67202
 Co. Rep / Geo. PAT DEENIHAN Rig HARDY DRUG #1
 Location: Sec. 6 Twp. 33S Rge. 5W Co. HARPER State Ks.

Interval Tested 3708 - 3725' Zone Tested LANS, KC 'B'
 Anchor Length 17' Drill Pipe Run 3579' Mud Wt. 9.4
 Top Packer Depth 3703' Drill Collars Run 120 Vis 56
 Bottom Packer Depth (SHALE) 3708' Wt. Pipe Run 0 WL 8.8 cc
 Total Depth 3725' Chlorides 5000 ppm System LCM 0
 Blow Description FF; Strong blow. B.O.B. in 13 mins. ISI; Weak blow. 1-2 1/2".

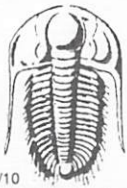
FF; Strong blow. B.O.B. in 20 mins. FSI; Fair blow, 3-6".
2550' Gas in pipe

Rec	Feet of	%gas	%oil	%water	%mud
<u>150</u>	<u>SGCM</u>	<u>4</u>		<u>96</u>	
<u>230</u>	<u>GOEM</u>	<u>58</u>	<u>7</u>	<u>35</u>	
<u>120</u>	<u>GWEMCO</u>	<u>42</u>	<u>34</u>	<u>12</u>	<u>12</u>

Rec Total 500 Fluid BHT 1290 Gravity N/A API RW N.C. @ °F Chlorides 5,000 ppm

(A) Initial Hydrostatic	<u>1806</u>	<input checked="" type="checkbox"/> Test	<u>1150</u>	T-On Location	<u>0820</u>
(B) First Initial Flow	<u>140</u>	<input checked="" type="checkbox"/> Jars	<u>250</u>	T-Started	<u>0933</u>
(C) First Final Flow	<u>145</u>	<input checked="" type="checkbox"/> Safety Joint	<u>75</u>	T-Open	<u>1113</u>
(D) Initial Shut-In	<u>840</u>	<input type="checkbox"/> Circ Sub		T-Pulled	<u>1419</u>
(E) Second Initial Flow	<u>151</u>	<input type="checkbox"/> Hourly Standby		T-Out	<u>1708</u>
(F) Second Final Flow	<u>173</u>	<input checked="" type="checkbox"/> Mileage	<u>144</u> 223.20	Comments	
(G) Final Shut-In	<u>818</u>	<input type="checkbox"/> Sampler			
(H) Final Hydrostatic	<u>1781</u>	<input type="checkbox"/> Straddle		<input type="checkbox"/> Ruined Shale Packer	
Initial Open	<u>30</u>	<input checked="" type="checkbox"/> Shale Packer	<u>250</u>	<input type="checkbox"/> Ruined Packer	
Initial Shut-In	<u>45</u>	<input type="checkbox"/> Extra Packer		<input type="checkbox"/> Extra Copies	
Final Flow	<u>45</u>	<input type="checkbox"/> Extra Recorder		Sub Total	<u>0</u>
Final Shut-In	<u>60</u>	<input type="checkbox"/> Day Standby		Total	<u>1948.20</u>
		<input type="checkbox"/> Accessibility		MP/DST Disc't	
		Sub Total	<u>1948.20</u>		

Approved By _____ Our Representative Cory P. [Signature]
 Trilobite Testing Inc. shall not be liable for damaged of any kind of the property or personnel of the one for whom a test is made, or for any loss suffered or sustained, directly or indirectly, through the use of its equipment, or its statements or opinion concerning the results of any test, tools lost or damaged in the hole shall be paid for at cost by the party for whom the test is made.



TRILOBITE TESTING INC.

1515 Commerce Parkway • Hays, Kansas 67601

Test Ticket

NO. 52289

4/10

Well Name & No. PAULINE SALSER # 2-6 Test No. 2 Date 8-1-13
 Company WHITE PINE PETL. CORP. Elevation 1345 KB 1335 GL
 Address 110 S. MAIN ST. STE. 500, WICHITA KS. 67202
 Co. Rep / Geo. PAT DEENIHAN Rig HARST DRG # 1
 Location: Sec. 6 Twp. 33S Rge. 5W Co. HARPER State Ks

Interval Tested 4372 ~ 4381 Zone Tested MISS.
 Anchor Length 9' Drill Pipe Run 4235 Mud Wt. 9.4
 Top Packer Depth 4367 Drill Collars Run 120 Vis 48
 Bottom Packer Depth (SHALE) 4372 Wt. Pipe Run 0 WL 8.8cc
 Total Depth 4381 Chlorides 3,000 ppm System LCM 0

Blow Description IF: Weak blow. slow increase to 4".
ISI: No blow.
FF: Strong blow. B.O.B. in 12 mins. EST: Weak blow.
1-2".

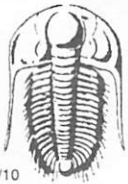
Rec	Feet of	%gas	%oil	%water	%mud
<u>700</u>	<u>Coas in pipe</u>				
<u>50</u>	<u>SOC, GM</u>	<u>13</u>	<u>2</u>	<u>85</u>	<u>85</u>
Rec	Feet of	%gas	%oil	%water	%mud
Rec	Feet of	%gas	%oil	%water	%mud
Rec	Feet of	%gas	%oil	%water	%mud

Rec Total 50 Fluid BHT 1400 Gravity N/A API RW N.C. @ — ° F Chlorides 3,000 ppm
 (A) Initial Hydrostatic 2178 Test 1250 T-On Location 0602
 (B) First Initial Flow 17 Jars _____ T-Started 0641
 (C) First Final Flow 22 Safety Joint _____ T-Open 0838
 (D) Initial Shut-In 1339 Circ Sub _____ T-Pulled 1244
 (E) Second Initial Flow 19 Hourly Standby _____ T-Out 1432
 (F) Second Final Flow 29 Mileage 144 223.20 Comments _____
 (G) Final Shut-In 1465 Sampler _____
 (H) Final Hydrostatic 2142 Straddle _____

Shale Packer 250 Ruined Shale Packer _____
 Extra Packer _____ Ruined Packer _____
 Extra Recorder _____ Sub Total 1225
 Day Standby 1d 36.75h Total 2948.20
 Accessibility _____ MP/DST Disc't _____
 Sub Total 1723.20

Approved By _____ Our Representative Pat Deenihan

Trilobite Testing Inc. shall not be liable for damaged of any kind of the property or personnel of the one for whom a test is made, or for any loss suffered or sustained, directly or indirectly, through the use of its equipment, or its statements or opinion concerning the results of any test, tools lost or damaged in the hole shall be paid for at cost by the party for whom the test is made.



TRILOBITE TESTING INC.

1515 Commerce Parkway • Hays, Kansas 67601

Test Ticket

NO. 52290

Well Name & No. PAULINE SALSER #2-6 Test No. 3 Date 8-1-13
 Company WHITE PINE PETROLEUM CORP. Elevation 1345 KB 1335 GL
 Address 1105. MAIN ST. 500, WICHITA KS-67202
 Co. Rep / Geo. PAT DEENTHAN Rig HARDT DRUG #1
 Location: Sec. 6 Twp. 33S Rge. 5W Co. HARPER State Ks

Interval Tested 4375-4388' Zone Tested MISS.
 Anchor Length 13' Drill Pipe Run 4266' Mud Wt. 9.4
 Top Packer Depth 4370' Drill Collars Run 120' Vis 48
 Bottom Packer Depth 4375' Wt. Pipe Run 0 WL 8.8 cc
 Total Depth 4388' Chlorides 3,000 ppm System LCM 0

Blow Description IF: Strong blow. B.O.B. in 35 secs. ISI: Strong blow. B.O.B.
FF: Strong blow. B.O.B. in 5 secs. FSI: Strong blow. B.O.B.
GTS 20 mins. in to FSIP

Rec	Feet of	%gas	%oil	%water	%mud
175	GOCM	22	28	50	
60	MW/wo specs.			86	14

Rec Total 235 Fluid BHT 1440 Gravity N/A API RW .07 @ 83 °F Chlorides 94000 ppm

(A) Initial Hydrostatic 2194 Test 1250 T-On Location 2005
 (B) First Initial Flow 31 Jars T-Started 2035
 (C) First Final Flow 64 Safety Joint T-Open 2228
 (D) Initial Shut-In 1274 Circ Sub T-Pulled 0214
 (E) Second Initial Flow 67 Hourly Standby T-Out 0549
 (F) Second Final Flow 109 Mileage 1447 223.20 Comments _____
 (G) Final Shut-In 1303 Sampler _____
 (H) Final Hydrostatic 2177 Straddle _____

* Shale Packer 250 Ruined Shale Packer _____

Initial Open 30 Extra Packer _____ Extra Copies _____
 Initial Shut-In 60 Extra Recorder _____ Sub Total 0
 Final Flow 45 Day Standby _____ Total 1723.20
 Final Shut-In 90 Accessibility _____ MP/DST Disc't _____
 Sub Total 1723.20

Approved By _____

Our Representative Gay Deenthan

TriLOBITE Testing Inc. shall not be liable for damaged of any kind of the property or personnel of the one for whom a test is made, or for any loss suffered or sustained, directly or indirectly, through the use of its equipment, or its statements or opinion concerning the results of any test, tools lost or damaged in the hole shall be paid for at cost by the party for whom the test is made.