

OPERATOR

Company: OUTLAW WELL SERVICE LLC
 Address: 1408 WEST 42ND
 HAYS, KS 67601

Contact Geologist: PRESTON WOLF
 Contact Phone Nbr: 785-650-2399

Well Name: PARIS #1
 Location: SW SE SE S4 T8S R21W
 Pool:
 State: KANSAS

API: 15-065-23952-00-00
 Field: KENYON SOUTHWEST
 Country: USA

Scale 1:240 Imperial

Well Name: PARIS #1
 Surface Location: SW SE SE S4 T8S R21W
 Bottom Location:
 API: 15-065-23952-00-00
 License Number: 34272
 Spud Date: 8/3/2013 Time: 6:41 AM
 Region: GRAHAM COUNTY
 Drilling Completed: 8/7/2013 Time: 8:00 PM
 Surface Coordinates: 330 FSL & 990 FWL
 Bottom Hole Coordinates:
 Ground Elevation: 2014.00ft
 K.B. Elevation: 2022.00ft
 Logged Interval: 2900.00ft To: 3620.00ft
 Total Depth: 3620.00ft
 Formation: LANSING KANSAS CITY
 Drilling Fluid Type: CHEMICAL/ FRESH WATER GEL

SURFACE CO-ORDINATES

Well Type: Vertical
 Longitude: Latitude:
 N/S Co-ord: 330 FSL
 E/W Co-ord: 990 FWL

LOGGED BY

Company: SOLUTIONS CONSULTING, INC
 Address: 108 W 35TH
 HAYS, KS 67601

Phone Nbr: (785) 639-1337
 Logged By: Geologist Name: STEVE REED/ HERB DEINES

CONTRACTOR

Contractor: DISCOVERY DRILLING, INC
 Rig #: 1
 Rig Type: MUD ROTARY
 Spud Date: 8/3/2013 Time: 6:41 AM
 TD Date: 8/7/2013 Time: 8:00 PM
 Rig Release: 8/8/2013 Time: 12:30 PM

ELEVATIONS

K.B. Elevation: 2022.00ft Ground Elevation: 2014.00ft
 K.B. to Ground: 8.00ft

NOTES

RECOMMENDATION TO PLUG WELL BASED ON NEGATIVE DRILL STEM TEST RESULTS AND LOW STRUCTURE WITH RESPECT TO COMPARISON WELLS.

GEOPHYSICAL WELL LOGGING WAS PERFORMED BY GEMINI WIRELINE: DUAL INDUCTION LOG, DUAL COMPENSATED POROSITY LOG AND MICRORESISTIVITY LOG

DRILL STEM TESTING WAS PERFORMED BY TRILOBITE TESTING, INC. : ONE (1) CONVENTIONAL TEST AND ONE (1) STRADDLE TEST WERE RUN

FORMATION TOPS AND CHRONOLOGY OF DAILY ACTIVITY

	WELL NAME		COMPARISON WELL	COMPARISON WELL
	PARIS #1		NEVINS #1	NEVINS UNIT #1
FORMATION	SAMPLE TOPS	LOG TOPS	LOG TOPS	LOG TOPS
ANHYDRITE	1589 + 433	1584 + 438	+446	+442
B-ANHYDRITE	1620 + 402	1616 + 406	+415	+410
TOPEKA	3003 - 981	2996 - 974	-954	-966
HEEBNER SHALE	3216 - 1194	3214 - 1192	-1165	-1173
TORONTO	3239 - 1217	3236 - 1214	-1187	-1198
LKC	3254 - 1232	3251 - 1229	-1203	-1213
BKC	3455 - 1433	3455 - 1433	-1406	-1409
ARBUCKLE	3533 - 1511	3532 - 1510	-1513	-1491
RTD & LTD	3620 - 1598	3619 - 1597		

SUMMARY OF DAILY ACTIVITY

8-3-13 RU, spud, set 8 5/8" surface pipe to 221 w/150 sxs common 2% gel, 3%CC, plug down, WOC 8 hrs

8-4-13 714', drilling

8-5-13 2532', drilling, 3226' CFS 20-40-60, Short trip.

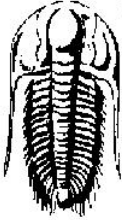
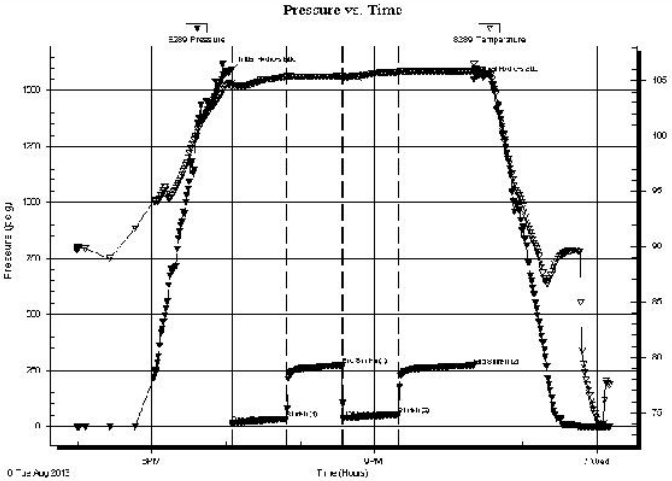
8-6-13 3337', 3300' CFS 20-40-60; 3337' CFS 20-40-60; DST #1 LKC "c-f" 3280' to 3337'. Strap .78 long, slope 1 degree

8-7-13 3620', RTD. 3426' CFS 20-40-60; mini trip, Logging

8-8-13 3620', DST #2 straddle ARBUCKLE 3512' to 3556'. P&A

8-9-13 Rig down

DST#1 3280' TO 3337' "C" TO "F" LKC TEST SUMMARY

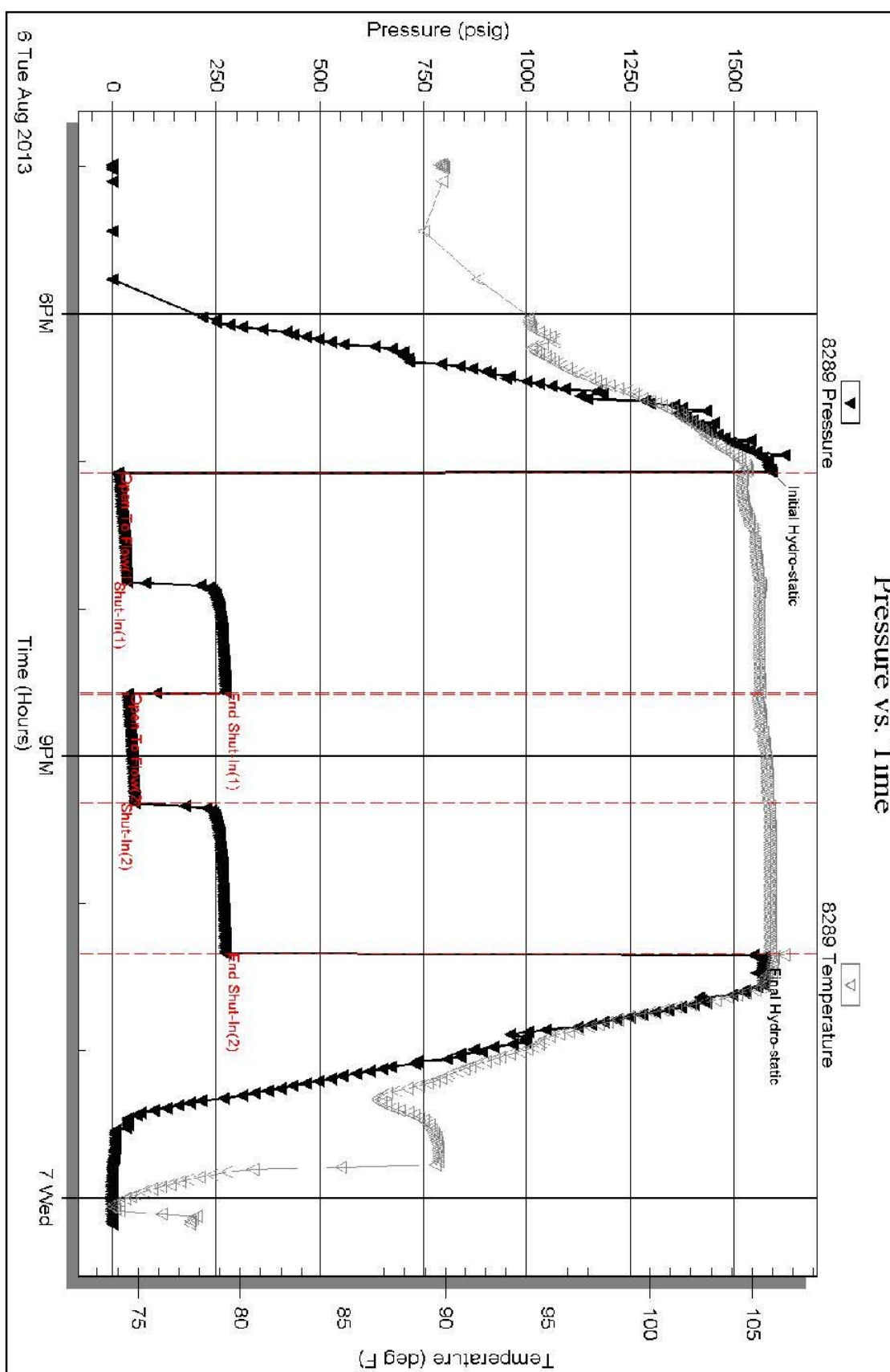
 <p>TRILOBITE TESTING, INC.</p>	DRILL STEM TEST REPORT			
	Outlaw Well Service LLC 1408 Weat 42nd Hays KS 67601 ATTN: Steve Reed	4 8s 21w Graham Paris # 1 Job Ticket: 50451 DST#:1 Test Start: 2013.08.06 @ 16:59:00		
GENERAL INFORMATION:				
Formation: LKC "C - F" Deviated: No Whipstock: 2022.00 ft (KB) Time Tool Opened: 19:04:30 Time Test Ended: 00:11:00		Test Type: Conventional Bottom Hole (Initial) Tester: Jim Svaty Unit No: 54		
Interval: 3280.00 ft (KB) To 3337.00 ft (KB) (TVD) Total Depth: 3337.00 ft (KB) (TVD) Hole Diameter: 7.88 inches Hole Condition: Fair		Reference Elevations: 2022.00 ft (KB) 2015.00 ft (CF) KB to GR/CF: 7.00 ft		
Serial #: 8289 Outside				
Press@RunDepth: 53.02 psig @ 3300.00 ft (KB) Start Date: 2013.08.06 End Date: 2013.08.07 Start Time: 16:59:02 End Time: 00:11:00		Capacity: 8000.00 psig Last Calib.: 2013.08.07 Time On Btm: 2013.08.06 @ 19:04:15 Time Off Btm: 2013.08.06 @ 22:20:45		
TEST COMMENT: 45-IFP- Surface Blow Building to 5 1/4in. 45-ISIP- No Blow 45-FFP- No Blow Flushed at 15 min. Surface Blow Building to 1/2in. 60-FSIP- No Blow				
	PRESSURE SUMMARY			
	Time (Min.)	Pressure (psig)	Temp (deg F)	Annotation
	0	1591.64	104.79	Initial Hydro-static
	1	12.47	104.28	Open To Flow (1)
	45	35.41	105.32	Shut-In(1)
	90	272.16	105.37	End Shut-In(1)
	91	36.63	105.25	Open To Flow (2)
	135	53.02	105.77	Shut-In(2)
	197	271.45	105.89	End Shut-In(2)
	197	1546.43	106.54	Final Hydro-static
Recovery		Gas Rates		
Length (ft)	Description	Choke (inches)	Pressure (psig)	Gas Rate (Mcf/d)
50.00	Mud 100%			0.70

DST #1 PRESSURE VS. TIME CHART

TriLOBITE Testing, Inc

Ref. No: 50451

Printed: 2013.08.07 @ 08:05:32



Serial #: 8289

Outside Outlaw Well Service LLC

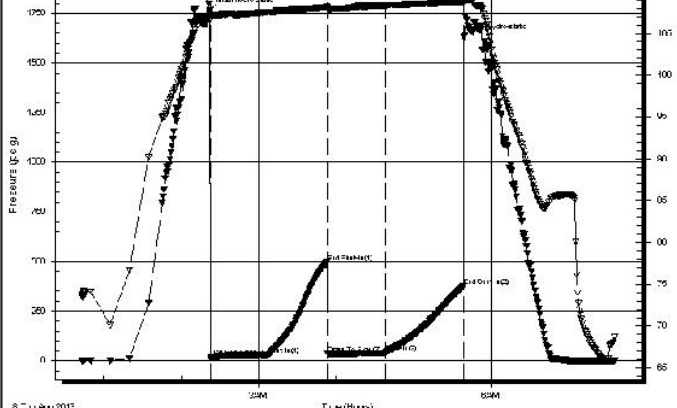
Paris # 1

DST Test Number: 1

DST #2 STRADDLE 3512' TO 3556' ARBUCKLE TEST SUMMARY

	DRILL STEM TEST REPORT	
	Outlaw Well Service LLC 1408 Weat 42nd Hays KS 67601 ATTN: Steve Reed	4 8s 21w Graham Paris # 1 Job Ticket: 50452 DST#:2 Test Start: 2013.08.08 @ 00:43:00
GENERAL INFORMATION:		
Formation: Arbuckle Deviated: No Whipstock: 2022.00 ft (KB) Time Tool Opened: 02:22:30 Time Test Ended: 07:36:00	Test Type: Conventional Straddle (Reset) Tester: Jim Svaty Unit No: 54	Reference Elevations: 2022.00 ft (KB) 2015.00 ft (CF) KB to GR/CF: 7.00 ft
Interval: 3512.00 ft (KB) To 3556.00 ft (KB) (TVD) Total Depth: 3620.00 ft (KB) (TVD) Hole Diameter: 7.88 inches Hole Condition: Fair		
Serial #: 8289 Outside Press@RunDepth: 39.37 psig @ 3515.00 ft (KB) Start Date: 2013.08.08 End Date: 2013.08.08 Start Time: 00:43:02 End Time: 07:36:00	Capacity: 8000.00 psig Last Calib.: 2013.08.08 Time On Btm: 2013.08.08 @ 02:22:15 Time Off Btm: 2013.08.08 @ 05:39:00	
TEST COMMENT: 45-IFP- Surface Blow in 2min. Building to 2 in. 45-ISIP- No Blow 45-FFP- Very Weak Surface Blow in 9 min. 60-FSIP- No Blow		

	PRESSURE SUMMARY			
	Time	Pressure	Temp	Annotation



(Min.)	(psig)	(deg F)	
0	1765.58	107.44	Initial Hydro-static
1	17.91	106.82	Open To Flow (1)
46	29.87	107.51	Shut-In(1)
91	495.99	108.15	End Shut-In(1)
92	32.49	107.98	Open To Flow (2)
136	39.37	108.38	Shut-In(2)
197	377.71	108.73	End Shut-In(2)
197	1630.86	109.24	Final Hydro-static

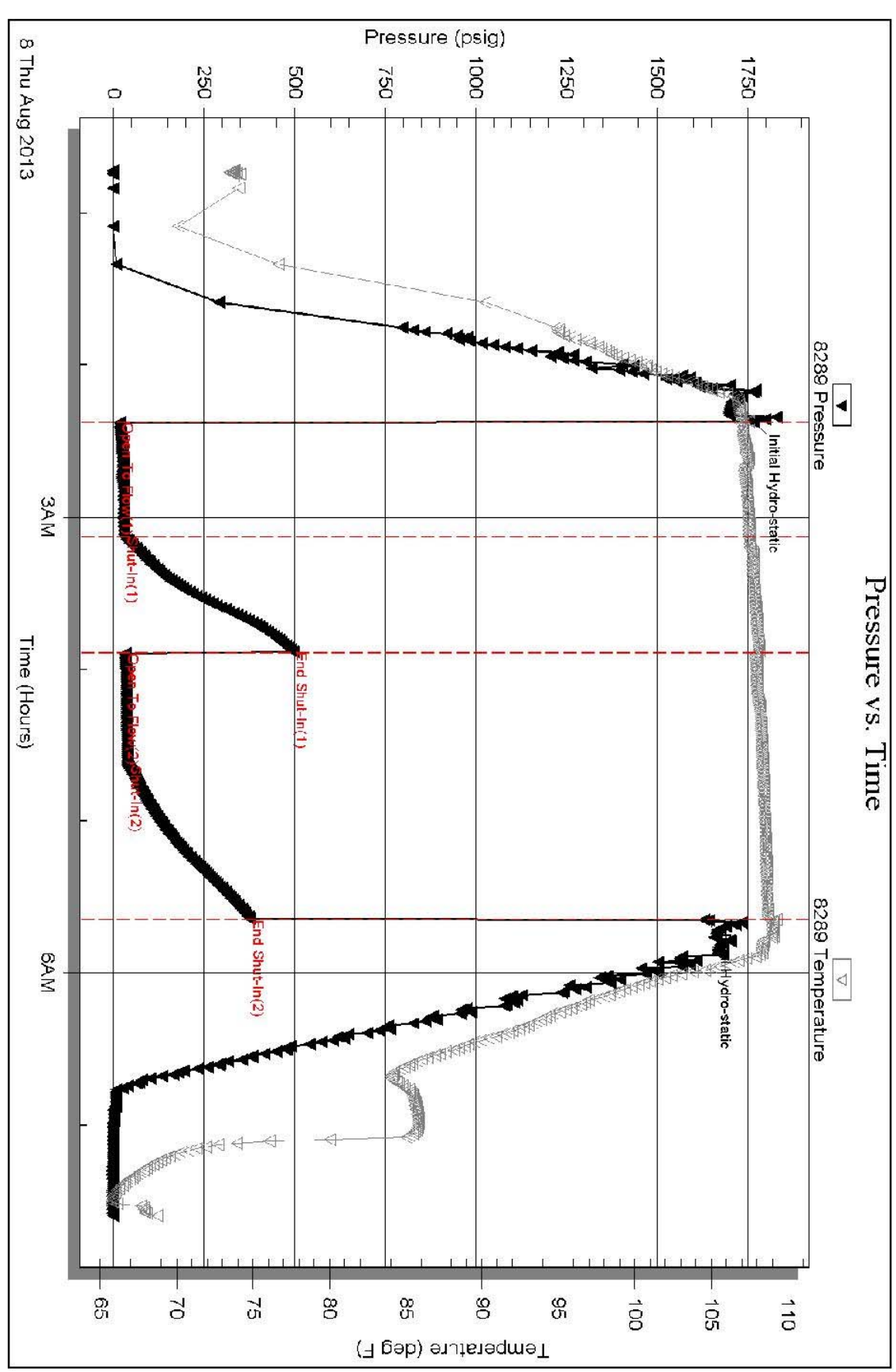
Length (ft)	Description	Volume (bbl)
50.00	OCM 2%o 98%m	0.70
8.00	MCO 20%m 80%o	0.11

* Recovery from multiple tests

Choke (inches)	Pressure (psig)	Gas Rate (Mcf/d)

Trilobite Testing, Inc Ref. No: 50452 Printed: 2013.08.08 @ 08:34:27

DST #2 PRESSURE VS. TIME CHART BOTTOM PACKER HELD



Serial #: 8289 Outside Outlaw Well Service LLC Paris # 1 DST Test Number 2
 Trilobite Testing, Inc Ref. No: 50452
 Printed: 2013.08.08 @ 08:34:29

ACCESSORIES

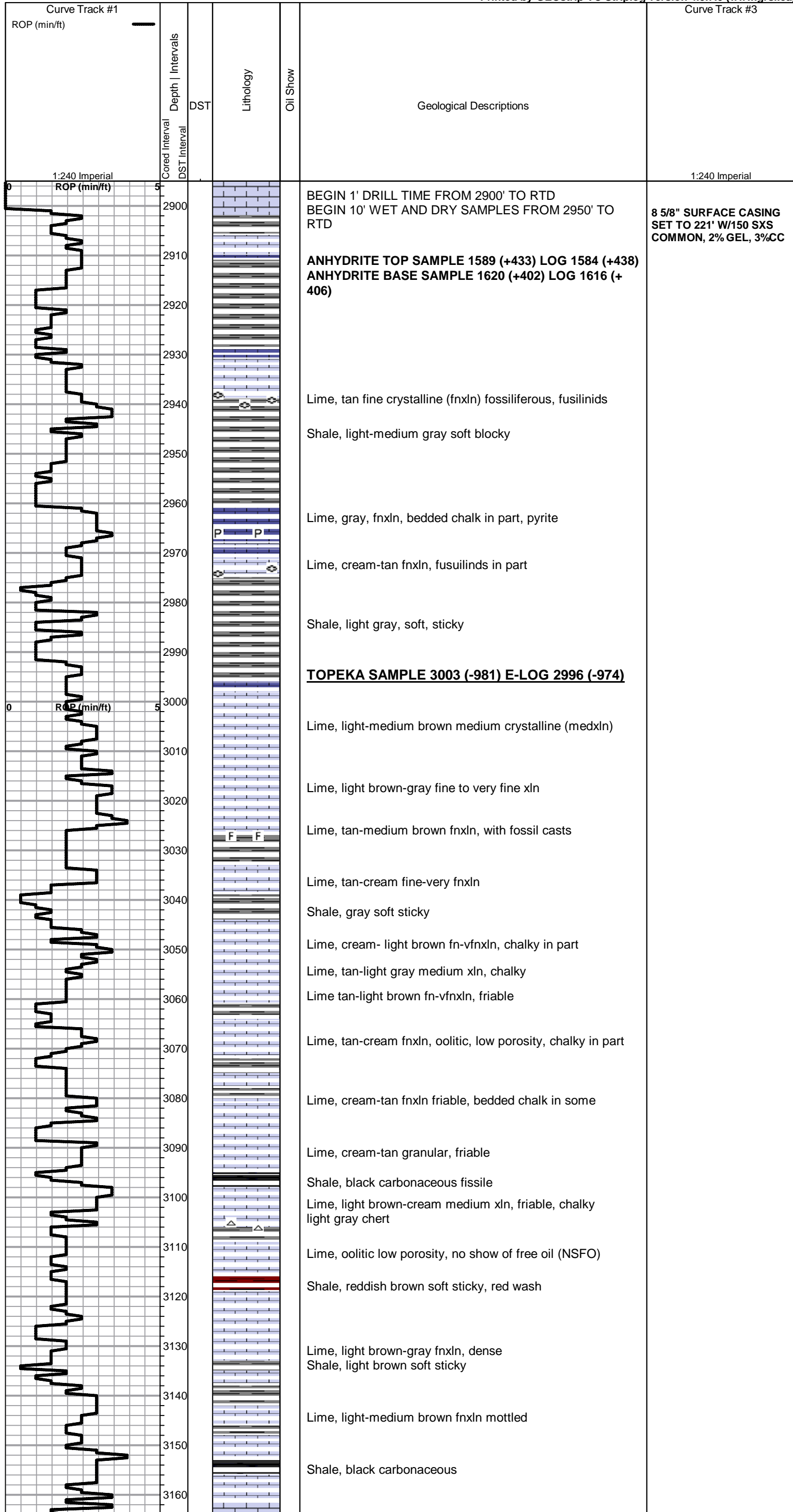
MINERAL
 P Pyrite
 △ Chert White

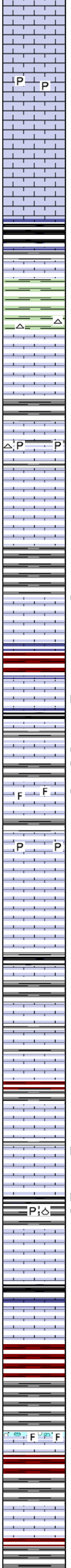
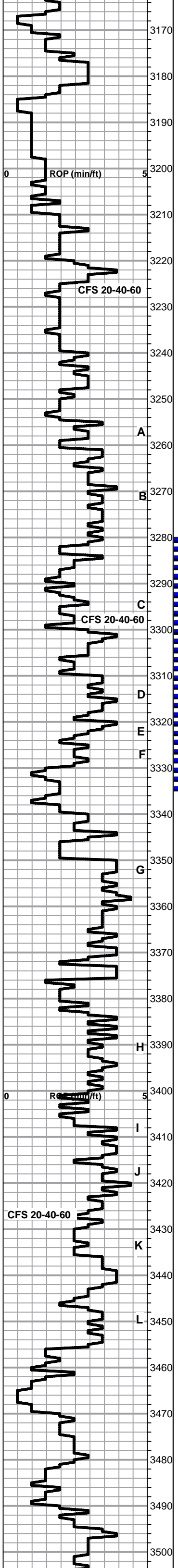
FOSSIL
 ◇ Brachiopod
 F Fossils < 20%
 ⊕ Fossiliferous

OTHER SYMBOLS

DST
 ■ DST Int
 ■ DST alt

Printed by GEOstrip VC Striplog version 4.0.7.0 (www.grsi.ca)





Lime, light gray-brown fnxln, chalky

Lime, light tan-light brown fn-vnxln, chalky in part, pyrite

Lime, light brown-gray granular friable

Lime, light brown granular friable, very chalky

HEEBNER SAMPLE 3216 (-981) LOG 3214 (-974)
Shale, black carbonaceous

Shale, gray-green soft blocky

TORONTO SAMPLE 3239 (-1217) LOG 3236 (-1214)

Lime, cream-offwhite bright, dense medium xln

LKC SAMPLE 3254 (-1232) LOG 3251 (-1229)

Lime, oolitic, slightly oomoldic, low porosity, NSFO, no odor

Lime, cream fnxln friable

Lime, cream-tan fn-vfxln, dense

Lime, cream-tan fn-medxln dense

Shale, gray-brown sticky, soft

DST # 1 3280' TO 3337'
SEE HEADER FOR TEST SUMMARY AND CHART

Lime, tan oolitic, show of free oil upon crush, sl odor, fluorescence under uv light.

Shale, reddish brown soft and sticky

Lime, off white medium xln, friable, with gilsonitic stain

Lime, tan-light brown fnxln, brittle

2 chips granular with slight stain, slight odor, NSFO

Lime, tan oolitic slight vugular porosity, SFO, slight odor

Lime, fossiliferous, slight stain, slight odor

Lime, cream off white fnxln brittle, pyrite

Lime, cream clean fn-medxln, friable, bedded chalk in part

Lime, cream fnxln

Shale, light- medium gray soft sticky

Lime, medium brown fn-medxln

Shale, light gray-greenish fissile

Lime, cream-tan fnxln

Lime, cream-light brown fn-medxln NSFO

Shale, purple-maroon-brownish soft blocky

Lime, light brown-tan fnxln with slight odor, gilsonitic stain NSFO, bedded chalk in part

Lime, tan fine intercrystalline porosity with slight scattered gilsonitic staining, 1 chip with free oil, low porosity, pyrite brachiopod

Lime, cream fine-medium xln

Lime, cream-light brown fn-medxln

Lime, light gray-brown granular chalky in part

BKC SAMPLE 3455 (-1433) LOG 3455 (-1433)

Shale, maroon-gray soft blocky

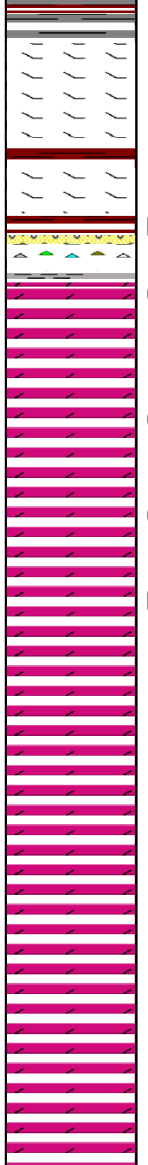
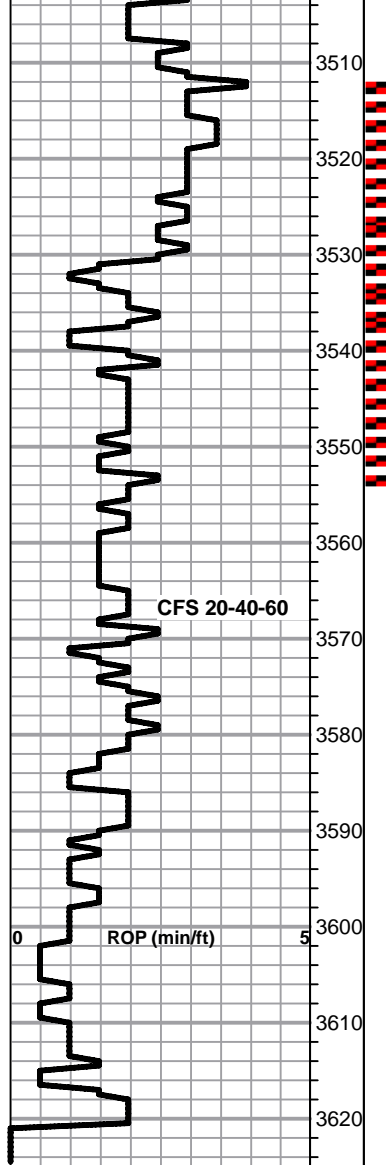
Lime, cream-light brown fnxln fossiliferous

Shale, gray- reddish brown soft sticky, red wash

Lime-cream- off white fnxln friable

Shale, brown soft blocky

Shale, gray-maroon sticky



Lime, cream granular, slightly dolomitic

Shale, reddish brown soft sticky, red wash

Sand clusters with slight gilsonitic stain

Cherts various colors

ARBUCKLE SAMPLE 3533 (-1511) LOG 3532 (-

Dolomite, well developed rhombic crystals, SFO, good odor, saturated stain, hard on crush

Dolomite, saturated stain frxn tight porosity

Dolomite, fine intercrystalline porosity with saturated stain

Dolomite, cream-tan frxn scattered stain, gilsonitic

Dolomite, cream frxn

Dolomite, cream frxn

Dolomite, cream fr-medxln

Dolomite, cream granular

RTD 3620-1598 LTD 3619-1597

**DST #2 STRADDLE TEST
3512' TO 3556' SEE
HEADER FOR TEST
SUMMARY AND CHART**