



**TRILOBITE  
TESTING, INC.**

# DRILL STEM TEST REPORT

Outlaw Well Service LLC

**4 8s 21w Graham**

1408 Weat 42nd  
Hays KS 67601

**Paris # 1**

ATTN: Steve Reed

Job Ticket: 50451

**DST#: 1**

Test Start: 2013.08.06 @ 16:59:00

## GENERAL INFORMATION:

Formation: **LKC " C - F "**

Deviated: No Whipstock: 2022.00 ft (KB)

Time Tool Opened: 19:04:30

Time Test Ended: 00:11:00

Test Type: Conventional Bottom Hole (Initial)

Tester: Jim Svaty

Unit No: 54

**Interval: 3280.00 ft (KB) To 3337.00 ft (KB) (TVD)**

Reference Elevations: 2022.00 ft (KB)

Total Depth: 3337.00 ft (KB) (TVD)

2015.00 ft (CF)

Hole Diameter: 7.88 inches Hole Condition: Fair

KB to GR/CF: 7.00 ft

**Serial #: 8289 Outside**

Press @ Run Depth: 53.02 psig @ 3300.00 ft (KB)

Capacity: 8000.00 psig

Start Date: 2013.08.06

End Date:

2013.08.07

Last Calib.:

2013.08.07

Start Time: 16:59:02

End Time:

00:11:00

Time On Btm:

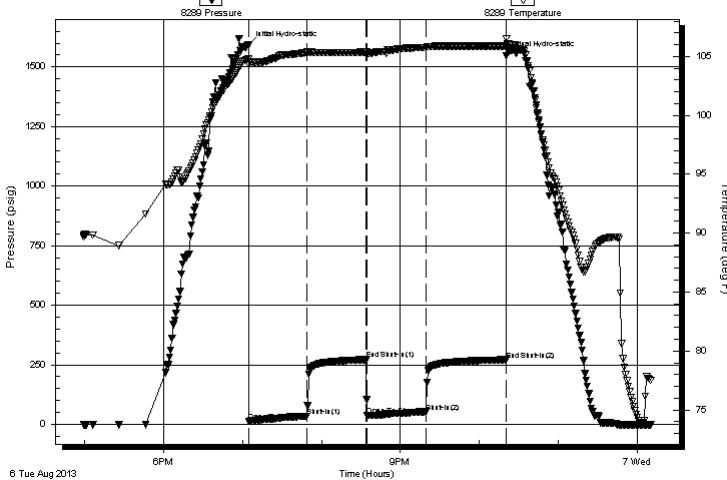
2013.08.06 @ 19:04:15

Time Off Btm:

2013.08.06 @ 22:20:45

**TEST COMMENT:** 45-IFP- Surface Blow Building to 5 1/4in.  
45-ISIP- No Blow  
45-FFP- No Blow Flushed at 15 min. Surface Blow Building to 1/2in.  
60-FSIP- No Blow

Pressure vs. Time



## PRESSURE SUMMARY

Time (Min.)	Pressure (psig)	Temp (deg F)	Annotation
0	1591.64	104.79	Initial Hydro-static
1	12.47	104.28	Open To Flow (1)
45	35.41	105.32	Shut-In(1)
90	272.16	105.37	End Shut-In(1)
91	36.63	105.25	Open To Flow (2)
135	53.02	105.77	Shut-In(2)
197	271.45	105.89	End Shut-In(2)
197	1546.43	106.54	Final Hydro-static

## Recovery

Length (ft)	Description	Volume (bbl)
50.00	Mud 100%	0.70

## Gas Rates

	Choke (inches)	Pressure (psig)	Gas Rate (Mcf/d)



**TRILOBITE  
TESTING, INC.**

**DRILL STEM TEST REPORT**

**FLUID SUMMARY**

Outlaw Well Service LLC

**4 8s 21w Graham**

1408 Weat 42nd  
Hays KS 67601

**Paris # 1**

Job Ticket: 50451

**DST#: 1**

ATTN: Steve Reed

Test Start: 2013.08.06 @ 16:59:00

**Mud and Cushion Information**

Mud Type: Gel Chem

Cushion Type:

Oil API:

deg API

Mud Weight: 9.00 lb/gal

Cushion Length:

ft

Water Salinity:

ppm

Viscosity: 64.00 sec/qt

Cushion Volume:

bbbl

Water Loss: 6.79 in<sup>3</sup>

Gas Cushion Type:

Resistivity: ohm.m

Gas Cushion Pressure:

psig

Salinity: 43000.00 ppm

Filter Cake: 2.00 inches

**Recovery Information**

Recovery Table

Length ft	Description	Volume bbl
50.00	Mud 100%	0.701

Total Length: 50.00 ft      Total Volume: 0.701 bbl

Num Fluid Samples: 0

Num Gas Bombs: 0

Serial #:

Laboratory Name:

Laboratory Location:

Recovery Comments:

