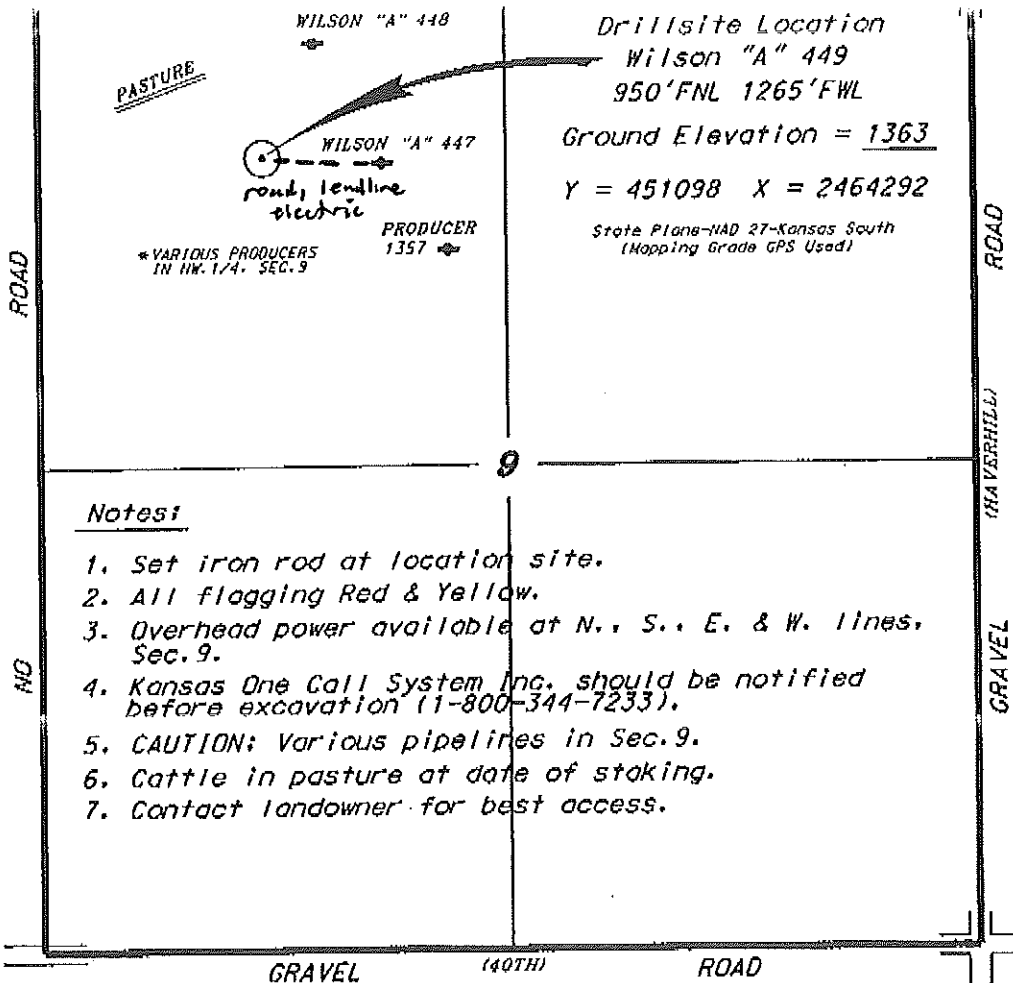
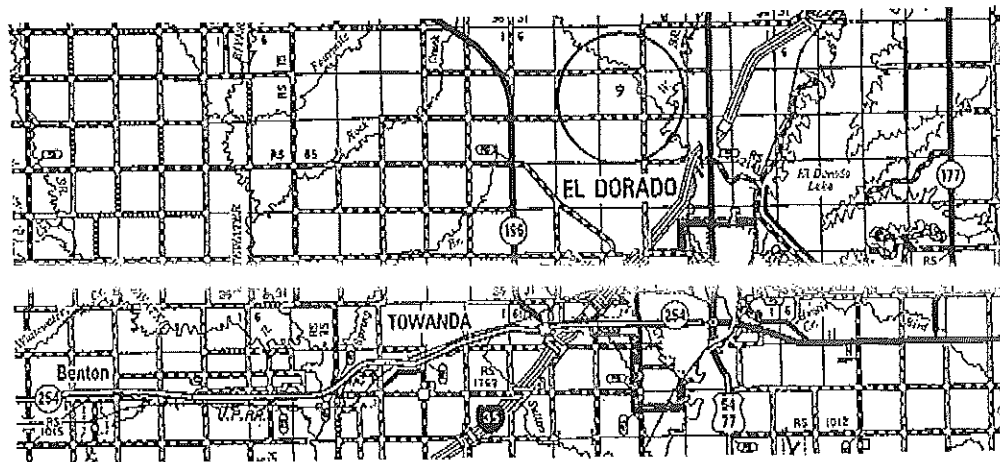


VESS OIL CORPORATION
WILSON LEASE
NW. 1/4, SECTION 9, T25S, R5E
BUTLER COUNTY, KANSAS

FLAGGED ROAD OPPOSITE LOC. GRAVEL (50TH) CATTLE-GUARD ROAD



* Ingress and egress to location as shown on this plat is per usage only and may not be legally opened for public use. Contact landowner, tenant and county road department for access.



• Controlled data is based upon the best maps and photographs available to us and upon a regular

• Appropriate section lines were determined using the normal standard of care of oilfield surveyors practicing in the state of Kansas. The station corners, which establish the precise section lines, were not necessarily located, and the exact location of the drillsite location in the section is not guaranteed. Therefore, the operator accepting this service and accepting this plat and all other parties relying thereon agree to hold Central Kansas Oilfield Services, Inc., its officers and employees harmless from all losses, costs and expenses and hold entities released from any liability from incidental or consequential damages.

• Elevations derived from National Geospatial Vertical Datum.

Date October 16, 2013