



Unit Petroleum Company

Date of Last Revision:

21-Oct-13

Well:

Loudenback 7 #1H

API No.:

1515521662

Location:

7-24S-9W

Rig:

Unit Drilling #331

County, State:

Reno County, KS

Engineer:

Brent Keys (918) 477-4510

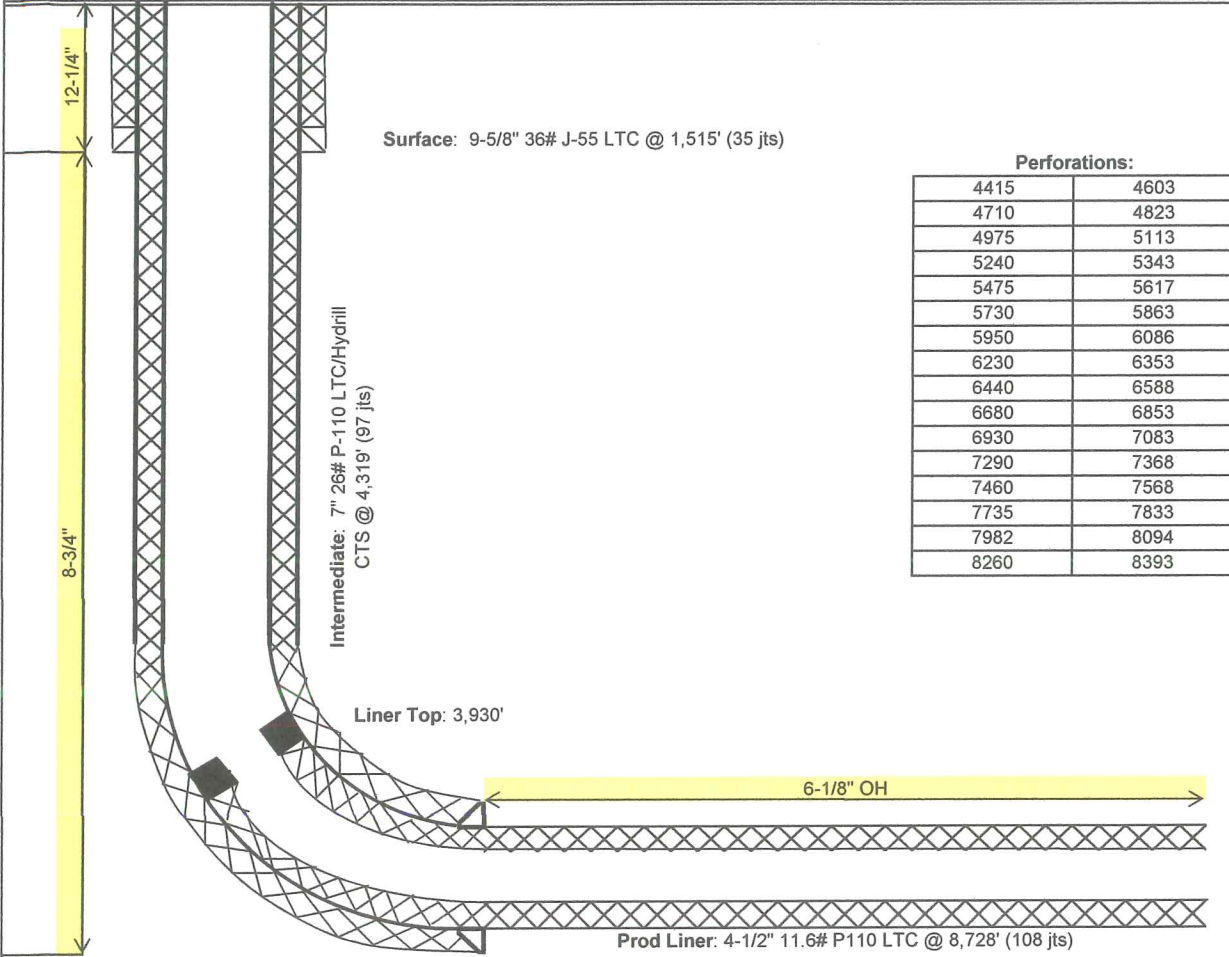
Surface Location:

150' FNL & 850' FEL

Geology:

Rob Wilson (928) 477-5728

OH Size



Perforations:

4415	4603
4710	4823
4975	5113
5240	5343
5475	5617
5730	5863
5950	6086
6230	6353
6440	6588
6680	6853
6930	7083
7290	7368
7460	7568
7735	7833
7982	8094
8260	8393