



DRILL STEM TEST REPORT

Prepared For: **Gore Oil Company**

PO Box 2757
Wichita, KS 67202

ATTN: Marc Downing

Ordway C #9

16-10s-18w Rooks,KS

Start Date: 2013.04.25 @ 00:11:45

End Date: 2013.04.25 @ 06:01:45

Job Ticket #: 52115 DST #: 1

Trilobite Testing, Inc

PO Box 362 Hays, KS 67601

ph: 785-625-4778 fax: 785-625-5620

Printed: 2013.04.29 @ 13:34:50



TRILOBITE TESTING, INC.

DRILL STEM TEST REPORT

Gore Oil Company

16-10s-18w Rooks,KS

PO Box 2757
Wichita, KS 67202

Ordway C #9

Job Ticket: 52115

DST#: 1

ATTN: Marc Downing

Test Start: 2013.04.25 @ 00:11:45

GENERAL INFORMATION:

Formation: **Arbuckle**

Deviated: No Whipstock: ft (KB)

Time Tool Opened: 02:22:45

Time Test Ended: 06:01:45

Test Type: Conventional Bottom Hole (Initial)

Tester: Dustin Rash

Unit No: 66

Interval: 3660.00 ft (KB) To 3694.00 ft (KB) (TVD)

Reference Elevations: 2142.00 ft (KB)

Total Depth: 3694.00 ft (KB) (TVD)

2134.00 ft (CF)

Hole Diameter: 7.88 inches Hole Condition: Fair

KB to GR/CF: 8.00 ft

Serial #: 8520 Outside

Press @ Run Depth: psig @ 3663.00 ft (KB)

Capacity: 8000.00 psig

Start Date: 2013.04.25

End Date:

2013.04.25

Last Calib.:

2013.04.25

Start Time: 00:21:45

End Time:

06:01:45

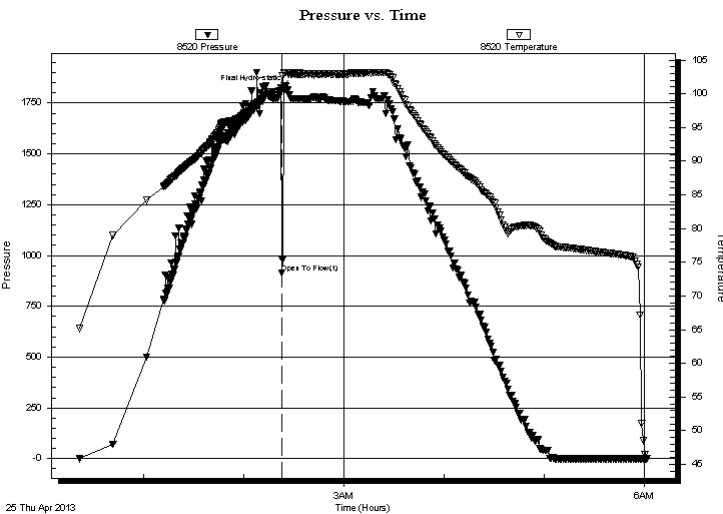
Time On Btm:

2013.04.25 @ 02:22:15

Time Off Btm:

2013.04.25 @ 02:26:15

TEST COMMENT: IF-Misrun



PRESSURE SUMMARY

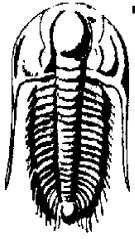
Time (Min.)	Pressure (psig)	Temp (deg F)	Annotation
0	1824.47	100.34	Initial Hydro-static
1	912.42	100.73	Open To Flow (1)
4	1815.00	103.08	Final Hydro-static

Recovery

Length (ft)	Description	Volume (bbl)
230.00	100%Mud	3.23

Gas Rates

Choke (inches)	Pressure (psig)	Gas Rate (Mcf/d)



TRILOBITE TESTING, INC.

DRILL STEM TEST REPORT

Gore Oil Company

16-10s-18w Rooks,KS

PO Box 2757
Wichita, KS 67202

Ordway C #9

Job Ticket: 52115 **DST#: 1**

ATTN: Marc Downing

Test Start: 2013.04.25 @ 00:11:45

GENERAL INFORMATION:

Formation: **Arbuckle**

Deviated: No Whipstock: ft (KB)

Time Tool Opened: 02:22:45

Time Test Ended: 06:01:45

Test Type: Conventional Bottom Hole (Initial)

Tester: Dustin Rash

Unit No: 66

Interval: 3660.00 ft (KB) To 3694.00 ft (KB) (TVD)

Reference Elevations: 2142.00 ft (KB)

Total Depth: 3694.00 ft (KB) (TVD)

2134.00 ft (CF)

Hole Diameter: 7.88 inches Hole Condition: Fair

KB to GR/CF: 8.00 ft

Serial #: 8354 Inside

Press @ Run Depth: psig @ 3663.00 ft (KB)

Capacity: 8000.00 psig

Start Date: 2013.04.25 End Date: 2013.04.25

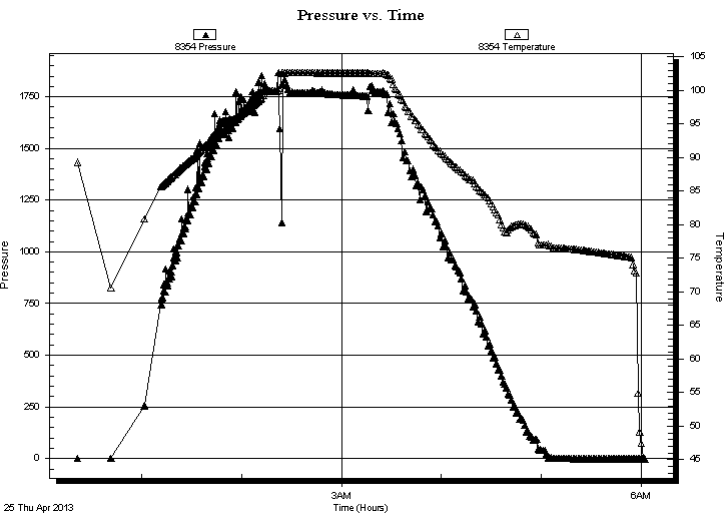
Last Calib.: 2013.04.25

Start Time: 00:21:30 End Time: 06:02:30

Time On Btm:

Time Off Btm:

TEST COMMENT: IF-Misrun



PRESSURE SUMMARY

Time (Min.)	Pressure (psig)	Temp (deg F)	Annotation

Recovery

Length (ft)	Description	Volume (bbl)
230.00	100%Mud	3.23

Gas Rates

	Choke (inches)	Pressure (psig)	Gas Rate (Mcf/d)



**TRILOBITE
TESTING, INC.**

DRILL STEM TEST REPORT

TOOL DIAGRAM

Gore Oil Company

16-10s-18w Rooks,KS

PO Box 2757
Wichita, KS 67202

Ordway C #9

Job Ticket: 52115

DST#: 1

ATTN: Marc Downing

Test Start: 2013.04.25 @ 00:11:45

Tool Information

Drill Pipe:	Length: 3654.00 ft	Diameter: 3.80 inches	Volume: 51.26 bbl	Tool Weight: 2000.00 lb
Heavy Wt. Pipe:	Length: 0.00 ft	Diameter: 2.70 inches	Volume: 0.00 bbl	Weight set on Packer: 25000.00 lb
Drill Collar:	Length: 0.00 ft	Diameter: 2.25 inches	Volume: 0.00 bbl	Weight to Pull Loose: 5000.00 lb
			<u>Total Volume: 51.26 bbl</u>	Tool Chased 0.00 ft
Drill Pipe Above KB:	14.00 ft			String Weight: Initial 50000.00 lb
Depth to Top Packer:	3660.00 ft			Final 50000.00 lb
Depth to Bottom Packer:	ft			
Interval between Packers:	34.00 ft			
Tool Length:	54.00 ft			
Number of Packers:	2	Diameter: 6.75 inches		

Tool Comments:

Tool Description	Length (ft)	Serial No.	Position	Depth (ft)	Accum. Lengths
------------------	-------------	------------	----------	------------	----------------

Change Over Sub	1.00			3641.00	
Shut In Tool	5.00			3646.00	
Hydraulic tool	5.00			3651.00	
Packer	5.00			3656.00	20.00 Bottom Of Top Packer
Packer	4.00			3660.00	
Stubb	1.00			3661.00	
Perforations	2.00			3663.00	
Recorder	0.00	8354	Inside	3663.00	
Recorder	0.00	8520	Outside	3663.00	
Perforations	28.00			3691.00	
Bullnose	3.00			3694.00	34.00 Bottom Packers & Anchor

Total Tool Length: 54.00



**TRILOBITE
TESTING, INC.**

DRILL STEM TEST REPORT

FLUID SUMMARY

Gore Oil Company

16-10s-18w Rooks,KS

PO Box 2757
Wichita, KS 67202

Ordway C #9

Job Ticket: 52115

DST#: 1

ATTN: Marc Downing

Test Start: 2013.04.25 @ 00:11:45

Mud and Cushion Information

Mud Type: Gel Chem

Cushion Type:

Oil API:

deg API

Mud Weight: 9.00 lb/gal

Cushion Length:

ft

Water Salinity:

ppm

Viscosity: 54.00 sec/qt

Cushion Volume:

bbbl

Water Loss: 7.38 in³

Gas Cushion Type:

Resistivity: ohm.m

Gas Cushion Pressure:

psig

Salinity: 4400.00 ppm

Filter Cake: inches

Recovery Information

Recovery Table

Length ft	Description	Volume bbbl
230.00	100%Mud	3.226

Total Length: 230.00 ft Total Volume: 3.226 bbl

Num Fluid Samples: 0

Num Gas Bombs: 0

Serial #:

Laboratory Name:

Laboratory Location:

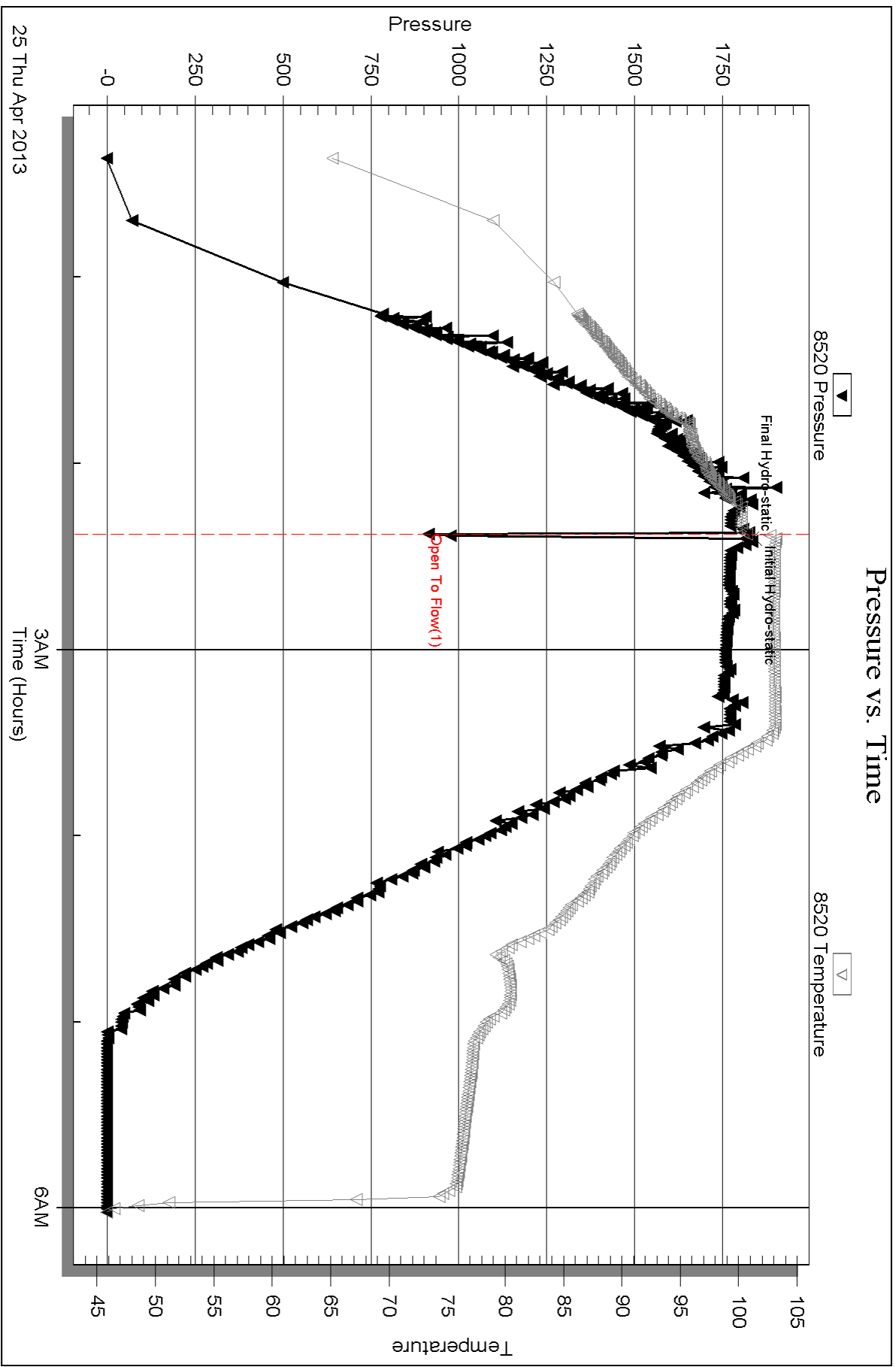
Recovery Comments:

Serial #: 8520

Outside Gore Oil Company

Ordway C#9

DST Test Number: 1



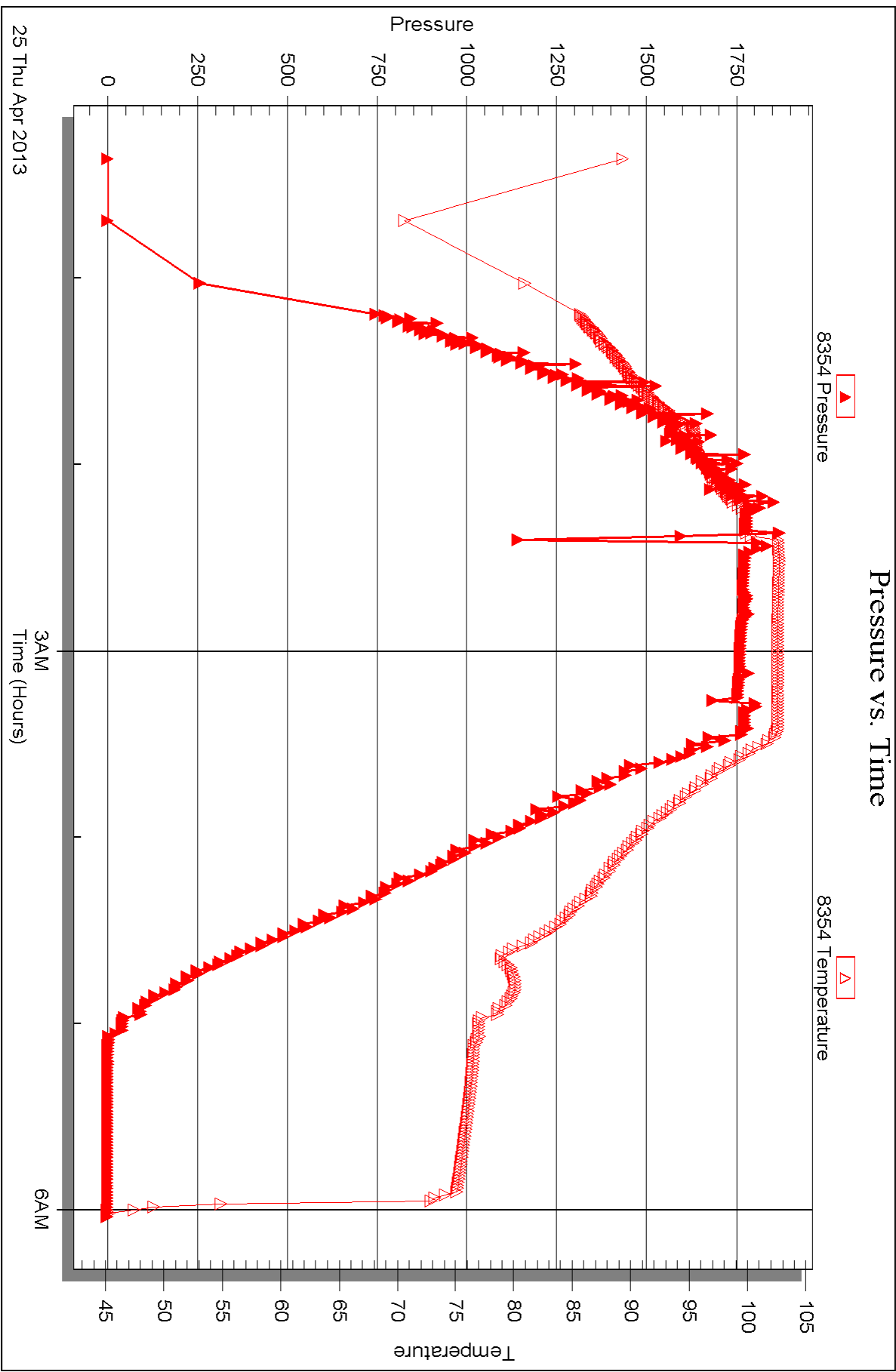
Serial #: 8354

Inside

Gore Oil Company

Ordway C#9

DST Test Number: 1





DRILL STEM TEST REPORT

Prepared For: **Gore Oil Company**

PO Box 2757
Wichita, KS 67202

ATTN: Marc Downing

Ordway C #9

16-10s-18w Rooks,KS

Start Date: 2013.04.25 @ 06:42:45

End Date: 2013.04.25 @ 13:51:15

Job Ticket #: 52116 DST #: 2

Trilobite Testing, Inc

PO Box 362 Hays, KS 67601

ph: 785-625-4778 fax: 785-625-5620

Printed: 2013.04.29 @ 13:34:09



**TRILOBITE
TESTING, INC.**

DRILL STEM TEST REPORT

Gore Oil Company

16-10s-18w Rooks,KS

PO Box 2757
Wichita, KS 67202

Ordway C #9

ATTN: Marc Downing

Job Ticket: 52116

DST#: 2

Test Start: 2013.04.25 @ 06:42:45

GENERAL INFORMATION:

Formation: **Arbuckle**

Deviated: No Whipstock: ft (KB)

Time Tool Opened: 08:39:05

Time Test Ended: 13:51:15

Test Type: Conventional Bottom Hole (Initial)

Tester: Dustin Rash

Unit No: 66

Interval: 3630.00 ft (KB) To 3694.00 ft (KB) (TVD)

Reference Elevations: 2142.00 ft (KB)

Total Depth: 3694.00 ft (KB) (TVD)

2134.00 ft (CF)

Hole Diameter: 7.88 inches Hole Condition: Fair

KB to GR/CF: 8.00 ft

Serial #: 8520 Outside

Press @ Run Depth: 240.35 psig @ 3668.00 ft (KB)

Capacity: 8000.00 psig

Start Date: 2013.04.25 End Date: 2013.04.25

Last Calib.: 2013.04.25

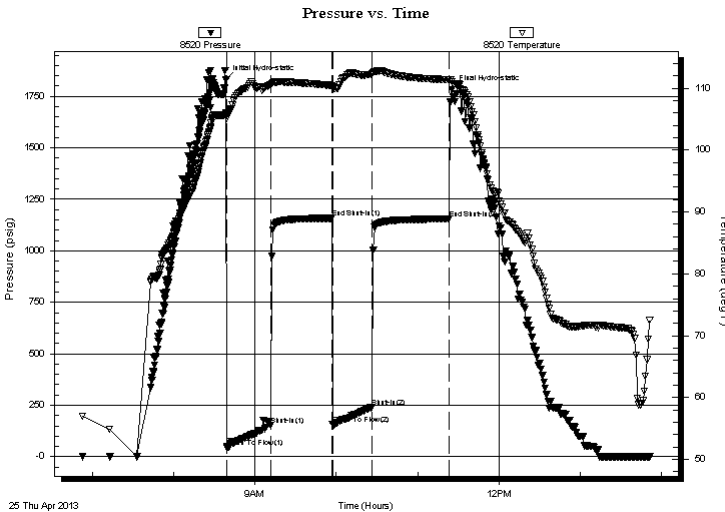
Start Time: 06:52:45 End Time: 13:51:15

Time On Btm: 2013.04.25 @ 08:38:35

Time Off Btm: 2013.04.25 @ 11:25:15

TEST COMMENT: IF-Fair building blow . BOB @ 11 minutes 30 seconds.
IS-No Return.
FF-Fair building blow . BOB @ 12 minutes 30 seconds.
FS-No Return.

PRESSURE SUMMARY



Time (Min.)	Pressure (psig)	Temp (deg F)	Annotation
0	1830.47	105.97	Initial Hydro-static
1	44.70	105.61	Open To Flow (1)
33	153.25	110.48	Shut-In(1)
79	1158.23	110.44	End Shut-In(1)
79	157.54	110.16	Open To Flow (2)
108	240.35	112.27	Shut-In(2)
165	1155.23	111.35	End Shut-In(2)
167	1782.81	111.05	Final Hydro-static

Recovery

Length (ft)	Description	Volume (bbl)
220.00	10%Gas/30%Oil/10%Water/50%Mud	3.09
126.00	20%Gas/40%Oil/20%Water/20%Mud	1.77
126.00	15%Gas/40%Oil/30%Water/15%Mud	1.77

Gas Rates

Choke (inches)	Pressure (psig)	Gas Rate (Mcf/d)



**TRILOBITE
TESTING, INC.**

DRILL STEM TEST REPORT

TOOL DIAGRAM

Gore Oil Company

16-10s-18w Rooks,KS

PO Box 2757
Wichita, KS 67202

Ordway C #9

Job Ticket: 52116

DST#: 2

ATTN: Marc Downing

Test Start: 2013.04.25 @ 06:42:45

Tool Information

Drill Pipe:	Length: 3623.00 ft	Diameter: 3.80 inches	Volume: 50.82 bbl	Tool Weight:	2000.00 lb
Heavy Wt. Pipe:	Length: 0.00 ft	Diameter: 2.70 inches	Volume: 0.00 bbl	Weight set on Packer:	25000.00 lb
Drill Collar:	Length: 0.00 ft	Diameter: 2.25 inches	Volume: 0.00 bbl	Weight to Pull Loose:	10000.00 lb
			<u>Total Volume: 50.82 bbl</u>	Tool Chased	0.00 ft
Drill Pipe Above KB:	13.00 ft			String Weight: Initial	50000.00 lb
Depth to Top Packer:	3630.00 ft			Final	53000.00 lb
Depth to Bottom Packer:	ft				
Interval between Packers:	64.00 ft				
Tool Length:	84.00 ft				
Number of Packers:	2	Diameter:	6.75 inches		
Tool Comments:					

Tool Description

Tool Description	Length (ft)	Serial No.	Position	Depth (ft)	Accum. Lengths
Change Over Sub	1.00			3611.00	
Shut In Tool	5.00			3616.00	
Hydraulic tool	5.00			3621.00	
Packer	5.00			3626.00	20.00 Bottom Of Top Packer
Packer	4.00			3630.00	
Stubb	1.00			3631.00	
Perforations	5.00			3636.00	
Change Over Sub	1.00			3637.00	
Drill Pipe	30.00			3667.00	
Change Over Sub	1.00			3668.00	
Recorder	0.00	8354	Inside	3668.00	
Recorder	0.00	8520	Outside	3668.00	
Perforations	23.00			3691.00	
Bullnose	3.00			3694.00	64.00 Bottom Packers & Anchor

Total Tool Length: 84.00



**TRILOBITE
TESTING, INC.**

DRILL STEM TEST REPORT

FLUID SUMMARY

Gore Oil Company

16-10s-18w Rooks,KS

PO Box 2757
Wichita, KS 67202

Ordway C #9

Job Ticket: 52116

DST#: 2

ATTN: Marc Downing

Test Start: 2013.04.25 @ 06:42:45

Mud and Cushion Information

Mud Type: Gel Chem

Cushion Type:

Oil API:

deg API

Mud Weight: 9.00 lb/gal

Cushion Length:

ft

Water Salinity:

ppm

Viscosity: 59.00 sec/qt

Cushion Volume:

bbbl

Water Loss: 7.39 in³

Gas Cushion Type:

Resistivity: ohm.m

Gas Cushion Pressure:

psig

Salinity: 4400.00 ppm

Filter Cake: inches

Recovery Information

Recovery Table

Length ft	Description	Volume bbbl
220.00	10%Gas/30%Oil/10%Water/50%Mud	3.086
126.00	20%Gas/40%Oil/20%Water/20%Mud	1.767
126.00	15%Gas/40%Oil/30%Water/15%Mud	1.767

Total Length: 472.00 ft

Total Volume: 6.620 bbl

Num Fluid Samples: 0

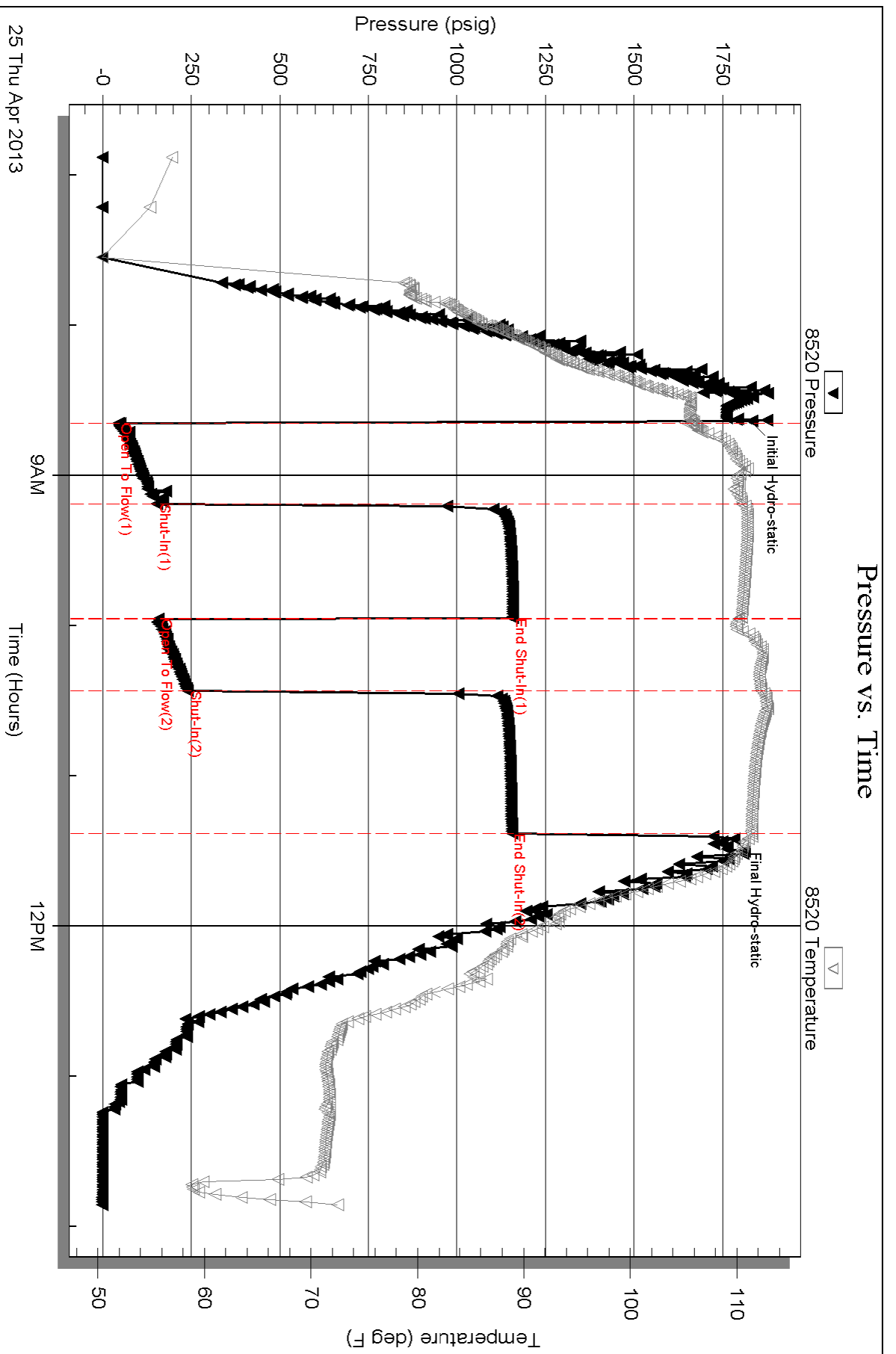
Num Gas Bombs: 0

Serial #:

Laboratory Name:

Laboratory Location:

Recovery Comments:



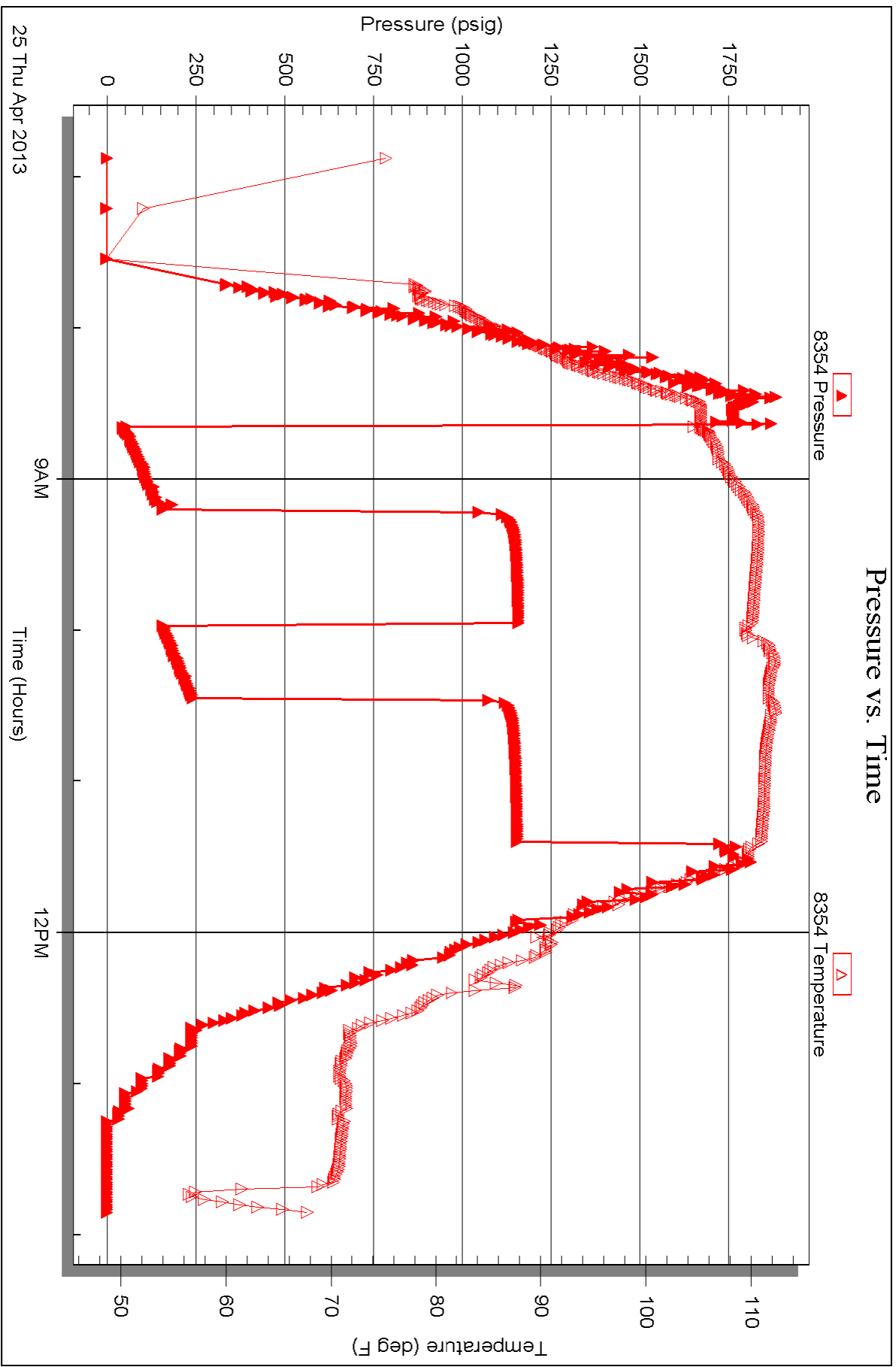
Serial #: 8354

Inside

Gore Oil Company

Ordway C#9

DST Test Number: 2





TRILOBITE TESTING INC.

1515 Commerce Parkway • Hays, Kansas 67601

Test Ticket

NO. 52115

Well Name & No. Ordway C#9 Test No. 1 Date 4-24-13
 Company Gore Oil Company Elevation ~~2139~~ 2142 KB ~~2129~~ 2134 GL
 Address P.O. Box 2757 Wichita KS 67202
 Co. Rep / Geo. Mark Downing Rig Maverick 108
 Location: Sec. 16 Twp. 10S Rge. 18W Co. Rooks State KS

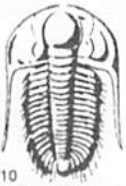
Interval Tested 3660-3694 Zone Tested Arbuckle
 Anchor Length 34' Drill Pipe Run _____ Mud Wt. 9.1
 Top Packer Depth 3655 Drill Collars Run 0 Vis 59
 Bottom Packer Depth 3660 Wt. Pipe Run 0 WL 7.4
 Total Depth 3694 Chlorides 4400 ppm System LCM 4
 Blow Description IF- MISUM,

Rec	Feet of	%gas	%oil	%water	%mud
<u>230</u>	<u>Mud</u>				<u>100</u>
Rec _____	Feet of _____	%gas	%oil	%water	%mud
Rec _____	Feet of _____	%gas	%oil	%water	%mud
Rec _____	Feet of _____	%gas	%oil	%water	%mud

Rec Total 230 BHT _____ Gravity _____ API RW _____ @ _____ ° F Chlorides _____ ppm

(A) Initial Hydrostatic _____ Test 950 T-On Location 1900
 (B) First Initial Flow _____ Jars _____ T-Started 0015
 (C) First Final Flow _____ Safety Joint _____ T-Open _____
 (D) Initial Shut-In _____ Circ Sub _____ T-Pulled _____
 (E) Second Initial Flow _____ Hourly Standby _____ T-Out 0600
 (F) Second Final Flow _____ Mileage 55 RT X2 85.25 Comments Batt-0011
 (G) Final Shut-In _____ Sampler _____ Had to return to pick up tools
 (H) Final Hydrostatic _____ Straddle _____ Ruined Shale Packer _____
 Shale Packer _____ Ruined Packer _____
 Extra Packer _____ Extra Copies _____
 Extra Recorder _____ Sub Total 0
 Day Standby _____ Total 1035.25
 Accessibility _____ MP/DST Disc _____
 Sub Total 1035.25

Approved By _____ Our Representative [Signature]
 Trilobite Testing Inc. shall not be liable for damaged of any kind of the property or personnel of the one for whom a test is made, or for any loss suffered or sustained, directly or indirectly, through the use of its equipment, or its statements or opinion concerning the results of any test, tools lost or damaged in the hole shall be paid for at cost by the party for whom the test is made.



TRILOBITE TESTING INC.

1515 Commerce Parkway • Hays, Kansas 67601

Test Ticket

NO. 52116

Well Name & No. Ordway C#9 Test No. 2 Date 4-25-13
 Company Coor Oil Company Elevation 2142 KB 2134 GL
 Address P.O. Box 2757 Wichita, KS 67202
 Co. Rep / Geo. Marc Downing Rig Maverick 108
 Location: Sec. 16 Twp. 10S Rge. 18W Co. Rooks State KS

Interval Tested 3630-3694 Zone Tested Arbuckle
 Anchor Length 64' Drill Pipe Run 3623 Mud Wt. 9.1
 Top Packer Depth 3625 Drill Collars Run 0 Vis 59
 Bottom Packer Depth 3630 Wt. Pipe Run 0 WL 7.4
 Total Depth 3694 Chlorides 4400 ppm System LCM 4

Blow Description IF - Fair building blow, BOB @ 11 minutes 30 seconds,
IF - No Return,
FF - Fair building blow, BOB @ 12 minutes 30 seconds,
FF - No Return,

Rec	Feet of	%gas	%oil	%water	%mud
<u>220</u>	<u>HOCGWM</u>	<u>10</u>	<u>30</u>	<u>10</u>	<u>50</u>
<u>126</u>	<u>HOCGWM</u>	<u>20</u>	<u>40</u>	<u>20</u>	<u>20</u>
<u>126</u>	<u>HOCGMW</u>	<u>15</u>	<u>40</u>	<u>30</u>	<u>15</u>
Rec	Feet of	%gas	%oil	%water	%mud
Rec	Feet of	%gas	%oil	%water	%mud

Rec Total 472 BHT 112 Gravity _____ API RW _____ @ _____ ° F Chlorides _____ ppm

(A) Initial Hydrostatic 1830 Test 1150 T-On Location 0615
 (B) First Initial Flow 45 Jars _____ T-Started 0645
 (C) First Final Flow 153 Safety Joint _____ T-Open 0839
 (D) Initial Shut-In 11:58 Circ Sub _____ T-Pulled 1115
 (E) Second Initial Flow 158 Hourly Standby _____ T-Out 01345
 (F) Second Final Flow 240 Mileage 85.25 Comments POST-0642
 (G) Final Shut-In 1155 Sampler _____ loaded tools 5:00 4/26
 (H) Final Hydrostatic 1783 Straddle _____ Ruined Shale Packer _____
 Shale Packer _____ Ruined Packer _____

Initial Open 30 Extra Packer _____ Extra Copies _____
 Initial Shut-In 45 Extra Recorder _____ Sub Total 0
 Final Flow 30 Day Standby _____ Total 1235.25
 Final Shut-In 45 Accessibility _____ MP/DST Disc't _____
 Sub Total 1235.25

Approved By _____ Our Representative D. Rash

Trilobite Testing Inc. shall not be liable for damaged of any kind of the property or personnel of the one for whom a test is made, or for any loss suffered or sustained, directly or indirectly, through the use of its equipment, or its statements or opinion concerning the results of any test, tools lost or damaged in the hole shall be paid for at cost by the party for whom the test is made.