



DRILL STEM TEST REPORT

Prepared For: **Eagle Creek Corporation**

150 N. Main STE 905
Wichita KS 67202

ATTN: Gary Gensch

Barnhart #1-17

17-17s-34w Scott,KS

Start Date: 2013.08.11 @ 22:30:15

End Date: 2013.08.12 @ 07:32:45

Job Ticket #: 53148 DST #: 1

Trilobite Testing, Inc
PO Box 362 Hays, KS 67601
ph: 785-625-4778 fax: 785-625-5620

Printed: 2013.08.15 @ 08:41:20



TRILOBITE TESTING, INC.

DRILL STEM TEST REPORT

Eagle Creek Corporation
 150 N. Main STE 905
 Wichita KS 67202
 ATTN: Gary Gensch

17-17s-34w Scott,KS
Barnhart #1-17
 Job Ticket: 53148 **DST#: 1**
 Test Start: 2013.08.11 @ 22:30:15

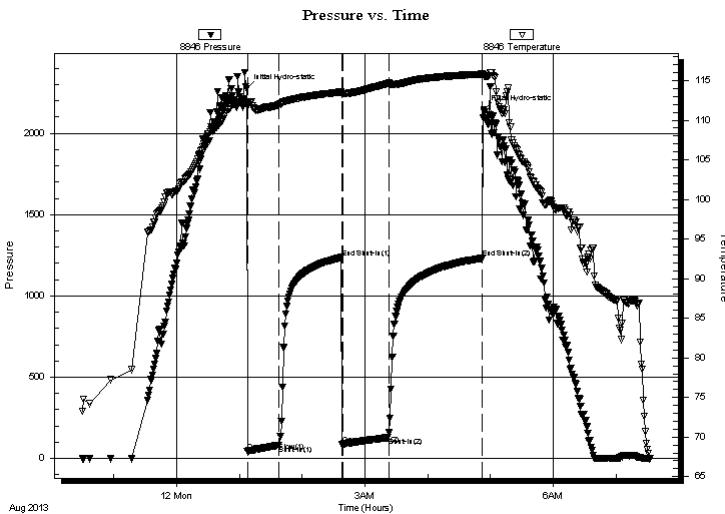
GENERAL INFORMATION:

Formation: **Marmaton A-B**
 Deviated: No Whipstock: ft (KB)
 Test Type: Conventional Bottom Hole (Initial)
 Time Tool Opened: 01:07:45 Tester: Mike Roberts
 Time Test Ended: 07:32:45 Unit No: 65
 Interval: **4468.00 ft (KB) To 4525.00 ft (KB) (TVD)** Reference Elevations: 3139.00 ft (KB)
 Total Depth: 4425.00 ft (KB) (TVD) 3129.00 ft (CF)
 Hole Diameter: 7.88 inches Hole Condition: Poor KB to GR/CF: 10.00 ft

Serial #: 8846 Outside
 Press @ Run Depth: 129.13 psig @ 4505.00 ft (KB) Capacity: 8000.00 psig
 Start Date: 2013.08.11 End Date: 2013.08.12 Last Calib.: 2013.08.12
 Start Time: 22:30:15 End Time: 07:32:45 Time On Btm: 2013.08.12 @ 01:07:15
 Time Off Btm: 2013.08.12 @ 04:53:45

TEST COMMENT: IF: BOB 14 min.
 IS: Return blow built to 1/8"
 FF: BOB 11 min.
 FS: Return blow built to 1/4"

PRESSURE SUMMARY



Time (Min.)	Pressure (psig)	Temp (deg F)	Annotation
0	2275.08	112.09	Initial Hydro-static
1	41.74	111.72	Open To Flow (1)
31	80.23	111.94	Shut-In(1)
91	1236.69	113.55	End Shut-In(1)
92	86.87	113.35	Open To Flow (2)
136	129.13	114.65	Shut-In(2)
225	1231.84	115.81	End Shut-In(2)
227	2147.79	115.59	Final Hydro-static

Recovery

Length (ft)	Description	Volume (bbl)
62.00	gcom 10%g 10%o 80%m	0.60
62.00	gcom 10%g 20%o 70%m	0.87
154.00	gco 40%g 60%o	2.16
0.00	GIP= 216	0.00

Gas Rates

Choke (inches)	Pressure (psig)	Gas Rate (Mcf/d)



**TRILOBITE
TESTING, INC.**

DRILL STEM TEST REPORT

TOOL DIAGRAM

Eagle Creek Corporation

17-17s-34w Scott,KS

150 N. Main STE 905
Wichita KS 67202

Barnhart #1-17

Job Ticket: 53148

DST#: 1

ATTN: Gary Gensch

Test Start: 2013.08.11 @ 22:30:15

Tool Information

Drill Pipe:	Length: 4443.00 ft	Diameter: 3.80 inches	Volume: 62.32 bbl	Tool Weight:	1500.00 lb
Heavy Wt. Pipe:	Length: 0.00 ft	Diameter: 0.00 inches	Volume: 0.00 bbl	Weight set on Packer:	25000.00 lb
Drill Collar:	Length: 30.00 ft	Diameter: 2.25 inches	Volume: 0.15 bbl	Weight to Pull Loose:	80000.00 lb
			<u>Total Volume: 62.47 bbl</u>	Tool Chased	0.00 ft
Drill Pipe Above KB:	25.00 ft			String Weight: Initial	68000.00 lb
Depth to Top Packer:	4468.00 ft			Final	71000.00 lb
Depth to Bottom Packer:	ft				
Interval between Packers:	57.00 ft				
Tool Length:	77.00 ft				
Number of Packers:	2	Diameter: 7.88 inches			
Tool Comments:					

Tool Description	Length (ft)	Serial No.	Position	Depth (ft)	Accum. Lengths
------------------	-------------	------------	----------	------------	----------------

Change Over Sub	1.00			4449.00	
Shut In Tool	5.00			4454.00	
Hydraulic tool	5.00			4459.00	
Packer	5.00			4464.00	20.00 Bottom Of Top Packer
Packer	4.00			4468.00	
Stubb	1.00			4469.00	
Perforations	2.00			4471.00	
Change Over Sub	1.00			4472.00	
Drill Pipe	32.00			4504.00	
Change Over Sub	1.00			4505.00	
Recorder	0.00	8737	Inside	4505.00	
Recorder	0.00	8846	Outside	4505.00	
Perforations	15.00			4520.00	
Bullnose	5.00			4525.00	57.00 Bottom Packers & Anchor

Total Tool Length: 77.00



**TRILOBITE
TESTING, INC.**

DRILL STEM TEST REPORT

FLUID SUMMARY

Eagle Creek Corporation

17-17s-34w Scott,KS

150 N. Main STE 905
Wichita KS 67202

Barnhart #1-17

Job Ticket: 53148

DST#: 1

ATTN: Gary Gensch

Test Start: 2013.08.11 @ 22:30:15

Mud and Cushion Information

Mud Type: Gel Chem

Cushion Type:

Oil API:

28 deg API

Mud Weight: 9.00 lb/gal

Cushion Length:

ft

Water Salinity:

0 ppm

Viscosity: 51.00 sec/qt

Cushion Volume:

bbbl

Water Loss: 10.71 in³

Gas Cushion Type:

Resistivity: 0.00 ohm.m

Gas Cushion Pressure:

psig

Salinity: 12000.00 ppm

Filter Cake: 1.00 inches

Recovery Information

Recovery Table

Length ft	Description	Volume bbbl
62.00	gcom 10%g 10%o 80%m	0.596
62.00	gcom 10%g 20%o 70%m	0.870
154.00	gco 40%g 60%o	2.160
0.00	GIP= 216	0.000

Total Length: 278.00 ft Total Volume: 3.626 bbl

Num Fluid Samples: 0

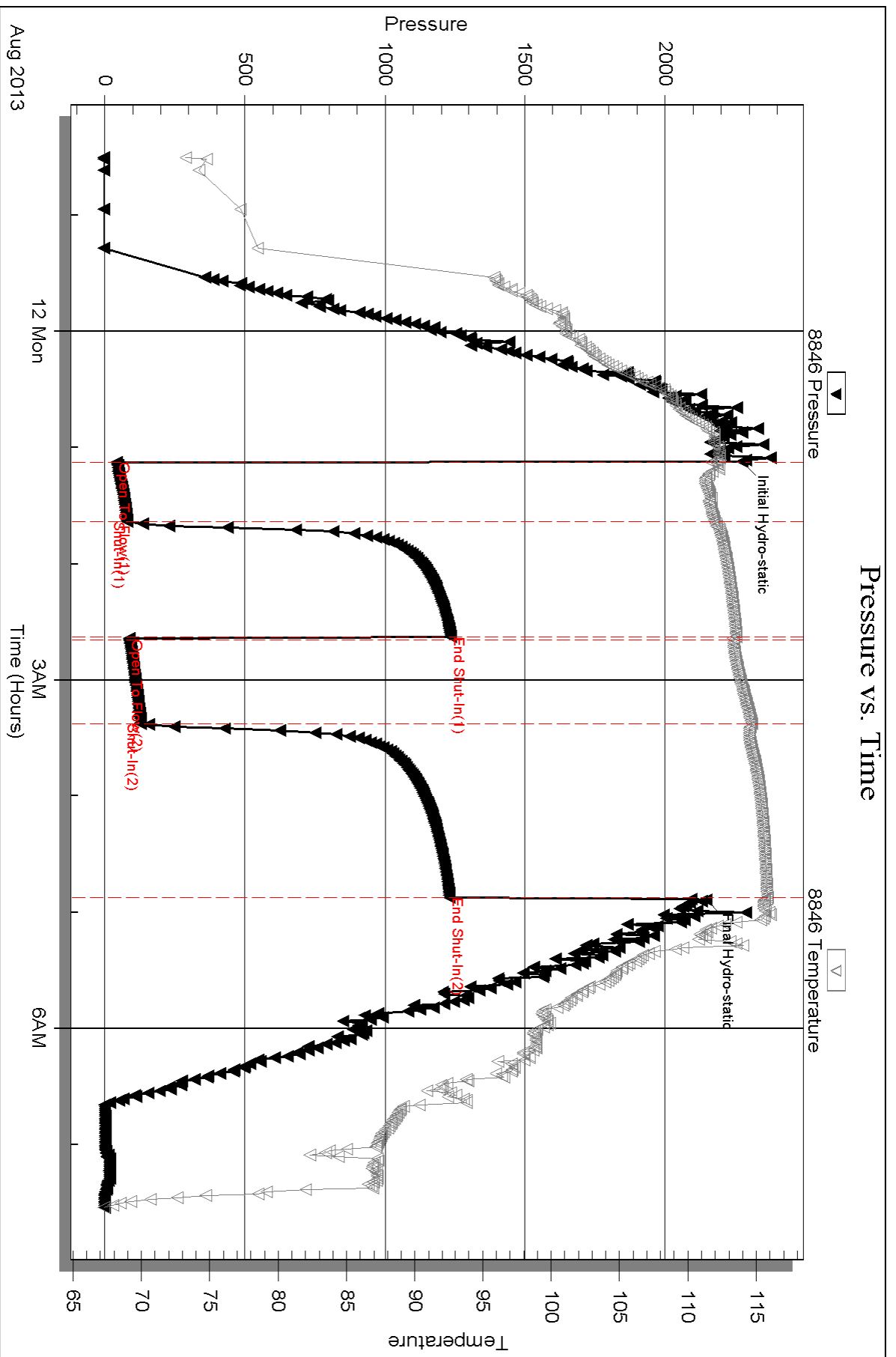
Num Gas Bombs: 0

Serial #:

Laboratory Name:

Laboratory Location:

Recovery Comments: API= 31 @90 corrected to 28@60



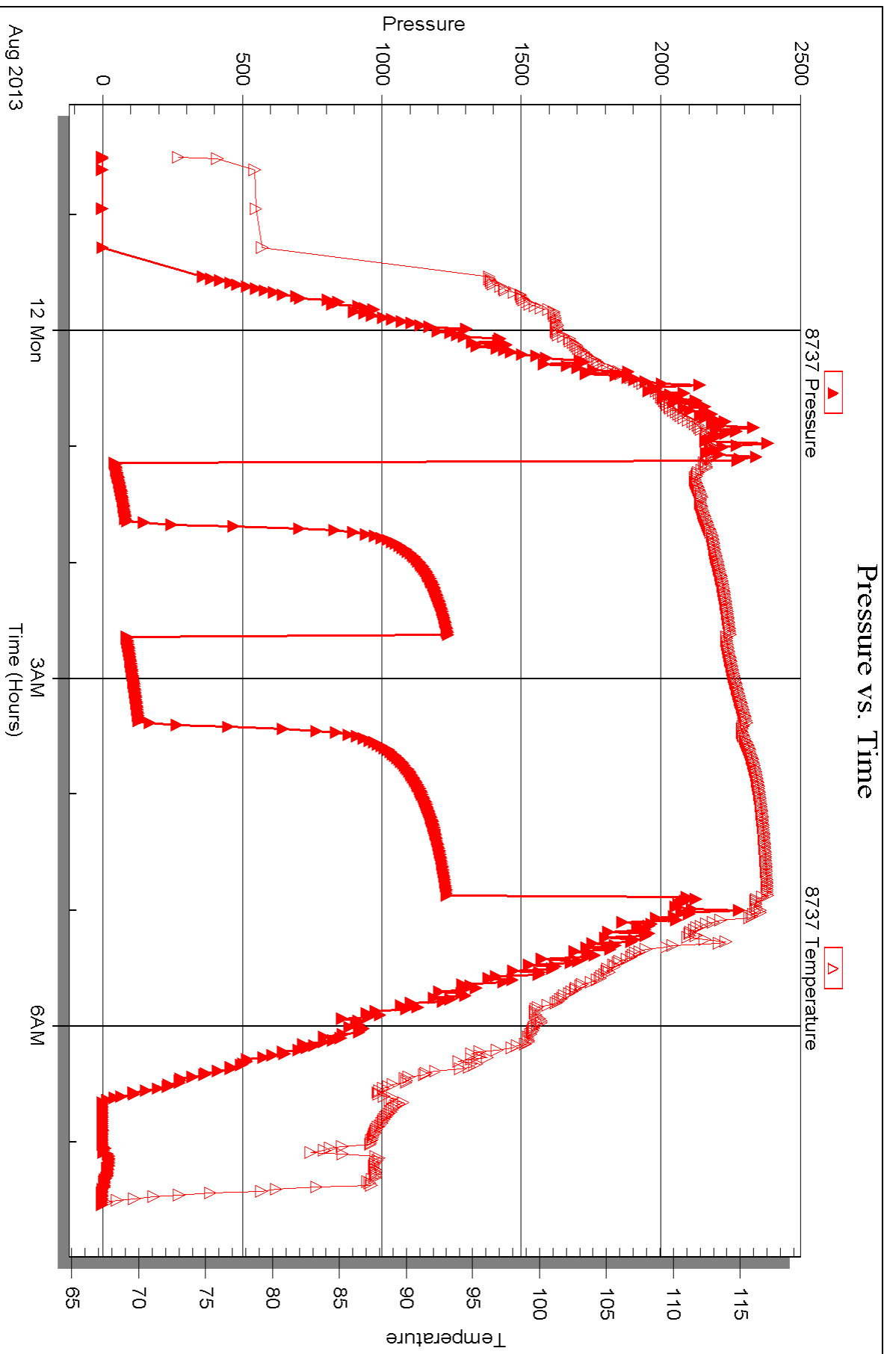
Serial #: 8737

Inside

Eagle Creek Corporation

Barnhart #1-17

DST Test Number: 1





DRILL STEM TEST REPORT

Prepared For: **Eagle Creek Corporation**

150 N. Main STE 905
Wichita KS 67202

ATTN: Gary Gensch

Barnhart #1-17

17-17s-34w Scott,KS

Start Date: 2013.08.12 @ 16:34:15

End Date: 2013.08.12 @ 22:18:15

Job Ticket #: 53149 DST #: 2

Trilobite Testing, Inc

PO Box 362 Hays, KS 67601

ph: 785-625-4778 fax: 785-625-5620

Printed: 2013.08.15 @ 08:40:45



TRILOBITE TESTING, INC.

DRILL STEM TEST REPORT

Eagle Creek Corporation
 150 N. Main STE 905
 Wichita KS 67202
 ATTN: Gary Gensch

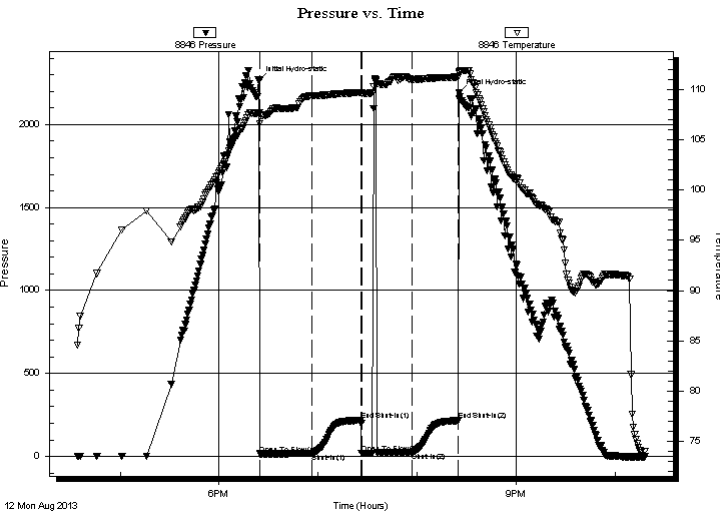
17-17s-34w Scott,KS
Barnhart #1-17
 Job Ticket: 53149 **DST#: 2**
 Test Start: 2013.08.12 @ 16:34:15

GENERAL INFORMATION:

Formation: **Marm C**
 Deviated: No Whipstock: ft (KB)
 Time Tool Opened: 18:24:30
 Time Test Ended: 22:18:15
 Interval: **4526.00 ft (KB) To 4545.00 ft (KB) (TVD)**
 Total Depth: 4545.00 ft (KB) (TVD)
 Hole Diameter: 7.88 inches Hole Condition: Poor
 Test Type: Conventional Bottom Hole (Reset)
 Tester: Mike Roberts
 Unit No: 65
 Reference Elevations: 3139.00 ft (KB)
 3129.00 ft (CF)
 KB to GR/CF: 10.00 ft

Serial #: 8846 Outside
 Press @ Run Depth: 24.34 psig @ 4527.00 ft (KB) Capacity: 8000.00 psig
 Start Date: 2013.08.12 End Date: 2013.08.12 Last Calib.: 2013.08.12
 Start Time: 16:34:15 End Time: 22:18:15 Time On Btm: 2013.08.12 @ 18:24:15
 Time Off Btm: 2013.08.12 @ 20:25:30

TEST COMMENT: IF: Built to 1/4" blow and died in 10 min.
 IS: No return blow
 FF: No blow --- flushed tool --- bubbled tw ice and died
 FS: No return blow



PRESSURE SUMMARY

Time (Min.)	Pressure (psig)	Temp (deg F)	Annotation
0	2263.61	107.71	Initial Hydro-static
1	15.04	106.58	Open To Flow (1)
32	18.18	109.39	Shut-In(1)
62	217.60	109.72	End Shut-In(1)
62	19.48	109.64	Open To Flow (2)
93	24.34	110.98	Shut-In(2)
121	215.20	111.24	End Shut-In(2)
122	2189.07	111.77	Final Hydro-static

Recovery

Length (ft)	Description	Volume (bbl)
10.00	mud w ith trace of oil	0.05

* Recovery from multiple tests

Gas Rates

Choke (inches)	Pressure (psig)	Gas Rate (Mcf/d)



**TRILOBITE
TESTING, INC.**

DRILL STEM TEST REPORT

TOOL DIAGRAM

Eagle Creek Corporation

17-17s-34w Scott,KS

150 N. Main STE 905
Wichita KS 67202

Barnhart #1-17

Job Ticket: 53149

DST#: 2

ATTN: Gary Gensch

Test Start: 2013.08.12 @ 16:34:15

Tool Information

Drill Pipe:	Length: 4502.00 ft	Diameter: 3.80 inches	Volume: 63.15 bbl	Tool Weight: 1500.00 lb
Heavy Wt. Pipe:	Length: 0.00 ft	Diameter: 0.00 inches	Volume: 0.00 bbl	Weight set on Packer: 25000.00 lb
Drill Collar:	Length: 30.00 ft	Diameter: 2.25 inches	Volume: 0.15 bbl	Weight to Pull Loose: 90000.00 lb
			<u>Total Volume: 63.30 bbl</u>	Tool Chased 0.00 ft
Drill Pipe Above KB:	26.00 ft			String Weight: Initial 70000.00 lb
Depth to Top Packer:	4526.00 ft			Final 70000.00 lb
Depth to Bottom Packer:	ft			
Interval between Packers:	19.00 ft			
Tool Length:	39.00 ft			
Number of Packers:	2	Diameter: 7.88 inches		

Tool Comments:

Tool Description

Tool Description	Length (ft)	Serial No.	Position	Depth (ft)	Accum. Lengths
Change Over Sub	1.00			4507.00	
Shut In Tool	5.00			4512.00	
Hydraulic tool	5.00			4517.00	
Packer	5.00			4522.00	20.00 Bottom Of Top Packer
Packer	4.00			4526.00	
Stubb	1.00			4527.00	
Recorder	0.00	8737	Inside	4527.00	
Recorder	0.00	8846	Outside	4527.00	
Perforations	13.00			4540.00	
Bullnose	5.00			4545.00	19.00 Bottom Packers & Anchor
Total Tool Length:	39.00				



**TRILOBITE
TESTING, INC.**

DRILL STEM TEST REPORT

FLUID SUMMARY

Eagle Creek Corporation

17-17s-34w Scott,KS

150 N. Main STE 905
Wichita KS 67202

Barnhart #1-17

Job Ticket: 53149

DST#: 2

ATTN: Gary Gensch

Test Start: 2013.08.12 @ 16:34:15

Mud and Cushion Information

Mud Type: Gel Chem

Cushion Type:

Oil API:

0 deg API

Mud Weight: 9.00 lb/gal

Cushion Length:

ft

Water Salinity:

0 ppm

Viscosity: 48.00 sec/qt

Cushion Volume:

bbbl

Water Loss: 11.93 in³

Gas Cushion Type:

Resistivity: 0.00 ohm.m

Gas Cushion Pressure:

psig

Salinity: 12000.00 ppm

Filter Cake: 1.00 inches

Recovery Information

Recovery Table

Length ft	Description	Volume bbl
10.00	mud w ith trace of oil	0.049

Total Length: 10.00 ft Total Volume: 0.049 bbl

Num Fluid Samples: 0

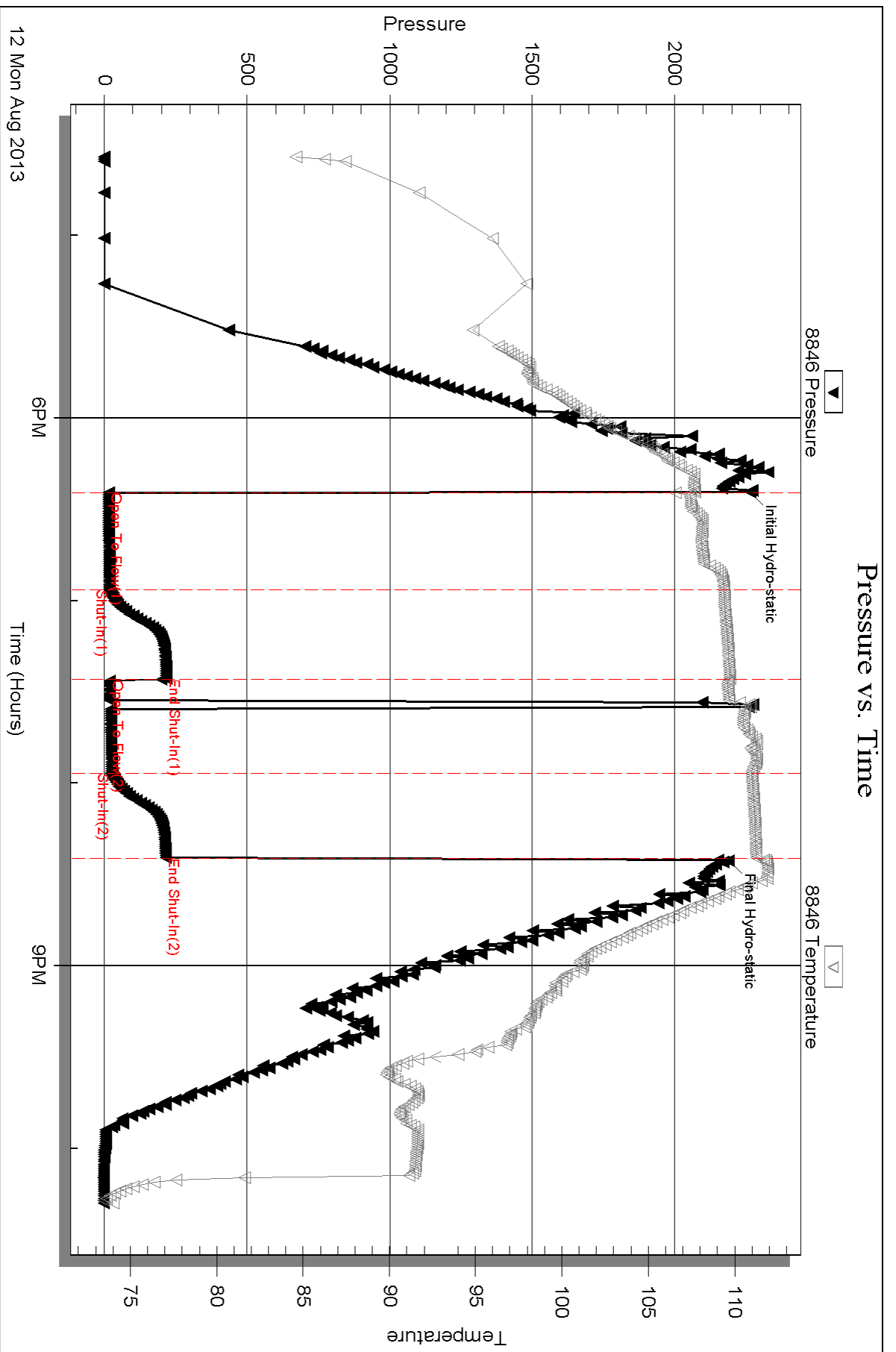
Num Gas Bombs: 0

Serial #:

Laboratory Name:

Laboratory Location:

Recovery Comments:



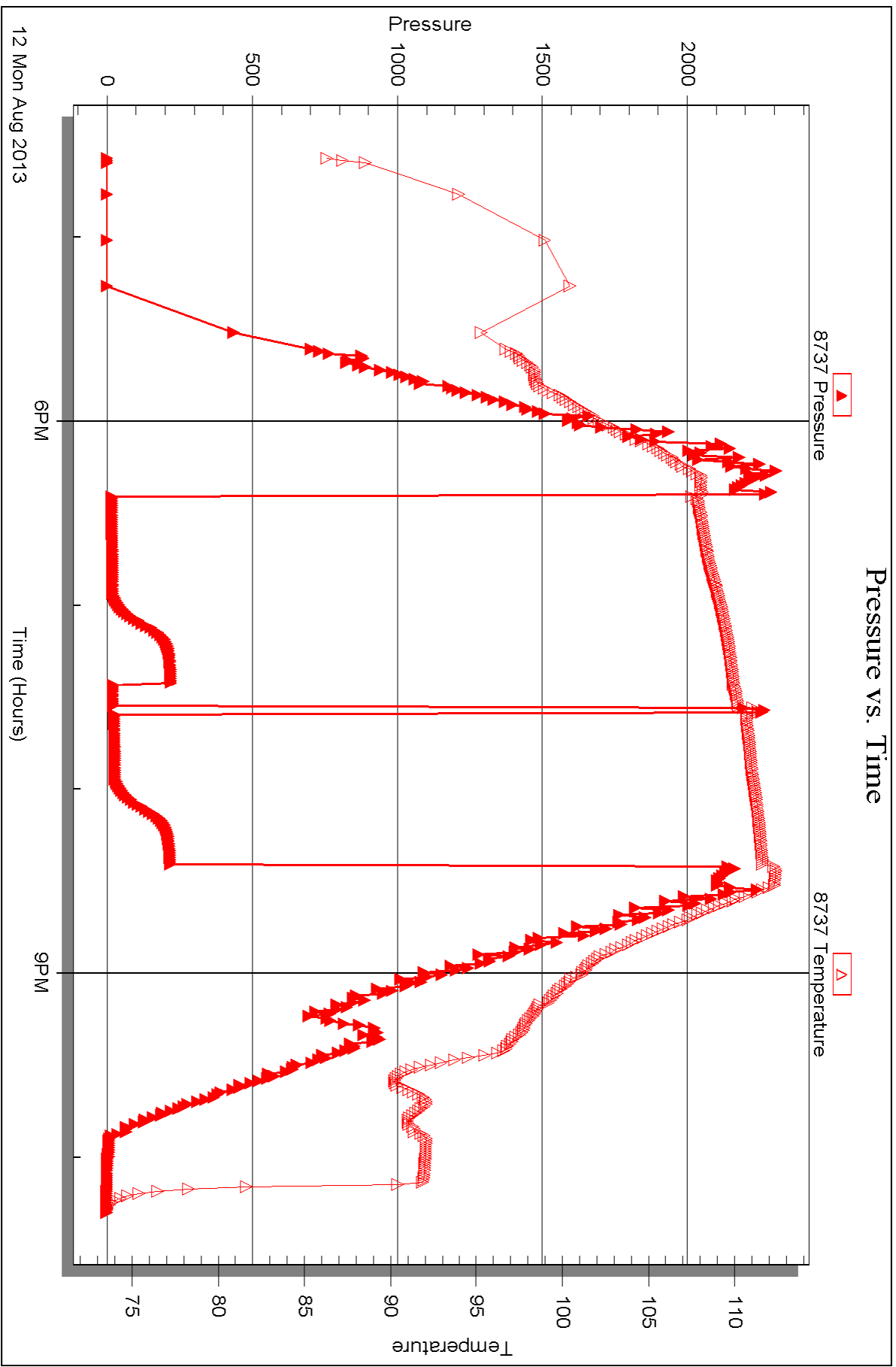
Serial #: 8737

Inside

Eagle Creek Corporation

Barnhart #1-17

DST Test Number: 2





DRILL STEM TEST REPORT

Prepared For: **Eagle Creek Corporation**

150 N. Main STE 905
Wichita KS 67202

ATTN: Gary Gensch

Barnhart #1-17

17-17s-34w Scott,KS

Start Date: 2013.08.13 @ 16:57:15

End Date: 2013.08.13 @ 23:36:00

Job Ticket #: 52901 DST #: 3

Trilobite Testing, Inc
PO Box 362 Hays, KS 67601
ph: 785-625-4778 fax: 785-625-5620

Printed: 2013.08.15 @ 08:40:02



TRILOBITE TESTING, INC.

DRILL STEM TEST REPORT

Eagle Creek Corporation
 150 N. Main STE 905
 Wichita KS 67202
 ATTN: Gary Gensch

17-17s-34w Scott, KS
Barnhart #1-17
 Job Ticket: 52901 **DST#: 3**
 Test Start: 2013.08.13 @ 16:57:15

GENERAL INFORMATION:

Formation: **Marm D-Cherokee**
 Deviated: No Whipstock: ft (KB) Test Type: Conventional Bottom Hole (Reset)
 Time Tool Opened: 19:11:30 Tester: Mike Roberts
 Time Test Ended: 23:36:00 Unit No: 65
Interval: 4561.00 ft (KB) To 4653.00 ft (KB) (TVD) Reference Elevations: 3139.00 ft (KB)
 Total Depth: 4653.00 ft (KB) (TVD) 3129.00 ft (CF)
 Hole Diameter: 7.88 inches Hole Condition: Poor KB to GR/CF: 10.00 ft

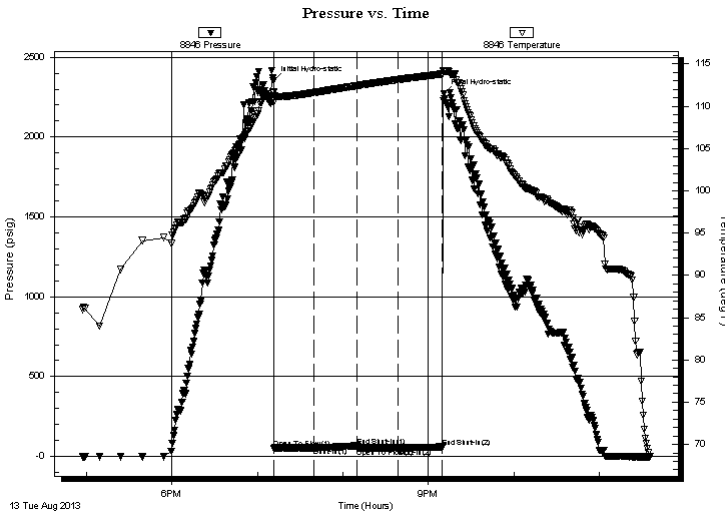
Serial #: 8846

Outside

Press @ Run Depth: 53.50 psig @ 4638.00 ft (KB) Capacity: 8000.00 psig
 Start Date: 2013.08.13 End Date: 2013.08.13 Last Calib.: 2013.08.13
 Start Time: 16:57:15 End Time: 23:36:00 Time On Btm: 2013.08.13 @ 19:11:15
 Time Off Btm: 2013.08.13 @ 21:11:00

TEST COMMENT: IF: Weak surface blow died in 5 min.
 IS: No return blow
 FF: No blow
 FS: No return blow

PRESSURE SUMMARY



Time (Min.)	Pressure (psig)	Temp (deg F)	Annotation
0	2355.07	111.67	Initial Hydro-static
1	52.57	110.39	Open To Flow (1)
29	53.87	111.60	Shut-In(1)
59	66.21	112.43	End Shut-In(1)
59	53.49	112.43	Open To Flow (2)
88	53.50	113.15	Shut-In(2)
119	59.91	113.81	End Shut-In(2)
120	2272.21	114.15	Final Hydro-static

Recovery

Length (ft)	Description	Volume (bbl)
5.00	mud w ith oil spots	0.02

* Recovery from multiple tests

Gas Rates

Choke (inches)	Pressure (psig)	Gas Rate (Mcf/d)



**TRILOBITE
TESTING, INC.**

DRILL STEM TEST REPORT

TOOL DIAGRAM

Eagle Creek Corporation

17-17s-34w Scott,KS

150 N. Main STE 905
Wichita KS 67202

Barnhart #1-17

Job Ticket: 52901

DST#: 3

ATTN: Gary Gensch

Test Start: 2013.08.13 @ 16:57:15

Tool Information

Drill Pipe:	Length: 4535.00 ft	Diameter: 3.80 inches	Volume: 63.61 bbl	Tool Weight:	1500.00 lb
Heavy Wt. Pipe:	Length: 0.00 ft	Diameter: 0.00 inches	Volume: 0.00 bbl	Weight set on Packer:	25000.00 lb
Drill Collar:	Length: 30.00 ft	Diameter: 2.25 inches	Volume: 0.15 bbl	Weight to Pull Loose:	80000.00 lb
			<u>Total Volume: 63.76 bbl</u>	Tool Chased	0.00 ft
Drill Pipe Above KB:	24.00 ft			String Weight: Initial	70000.00 lb
Depth to Top Packer:	4561.00 ft			Final	70000.00 lb
Depth to Bottom Packer:	ft				
Interval between Packers:	92.00 ft				
Tool Length:	112.00 ft				
Number of Packers:	2	Diameter: 7.88 inches			

Tool Comments:

Tool Description

Tool Description	Length (ft)	Serial No.	Position	Depth (ft)	Accum. Lengths
Change Over Sub	1.00			4542.00	
Shut In Tool	5.00			4547.00	
Hydraulic tool	5.00			4552.00	
Packer	5.00			4557.00	20.00 Bottom Of Top Packer
Packer	4.00			4561.00	
Stubb	1.00			4562.00	
Perforations	11.00			4573.00	
Change Over Sub	1.00			4574.00	
Drill Pipe	63.00			4637.00	
Change Over Sub	1.00			4638.00	
Recorder	0.00	8737	Inside	4638.00	
Recorder	0.00	8846	Outside	4638.00	
Perforations	10.00			4648.00	
Bullnose	5.00			4653.00	92.00 Bottom Packers & Anchor

Total Tool Length: 112.00



**TRILOBITE
TESTING, INC.**

DRILL STEM TEST REPORT

FLUID SUMMARY

Eagle Creek Corporation

17-17s-34w Scott,KS

150 N. Main STE 905
Wichita KS 67202

Barnhart #1-17

Job Ticket: 52901

DST#: 3

ATTN: Gary Gensch

Test Start: 2013.08.13 @ 16:57:15

Mud and Cushion Information

Mud Type: Gel Chem

Cushion Type:

Oil API:

0 deg API

Mud Weight: 9.00 lb/gal

Cushion Length:

ft

Water Salinity:

0 ppm

Viscosity: 54.00 sec/qt

Cushion Volume:

bbbl

Water Loss: 10.37 in³

Gas Cushion Type:

Resistivity: 0.00 ohm.m

Gas Cushion Pressure:

psig

Salinity: 9500.00 ppm

Filter Cake: 1.00 inches

Recovery Information

Recovery Table

Length ft	Description	Volume bbl
5.00	mud w ith oil spots	0.025

Total Length: 5.00 ft Total Volume: 0.025 bbl

Num Fluid Samples: 0

Num Gas Bombs: 0

Serial #:

Laboratory Name:

Laboratory Location:

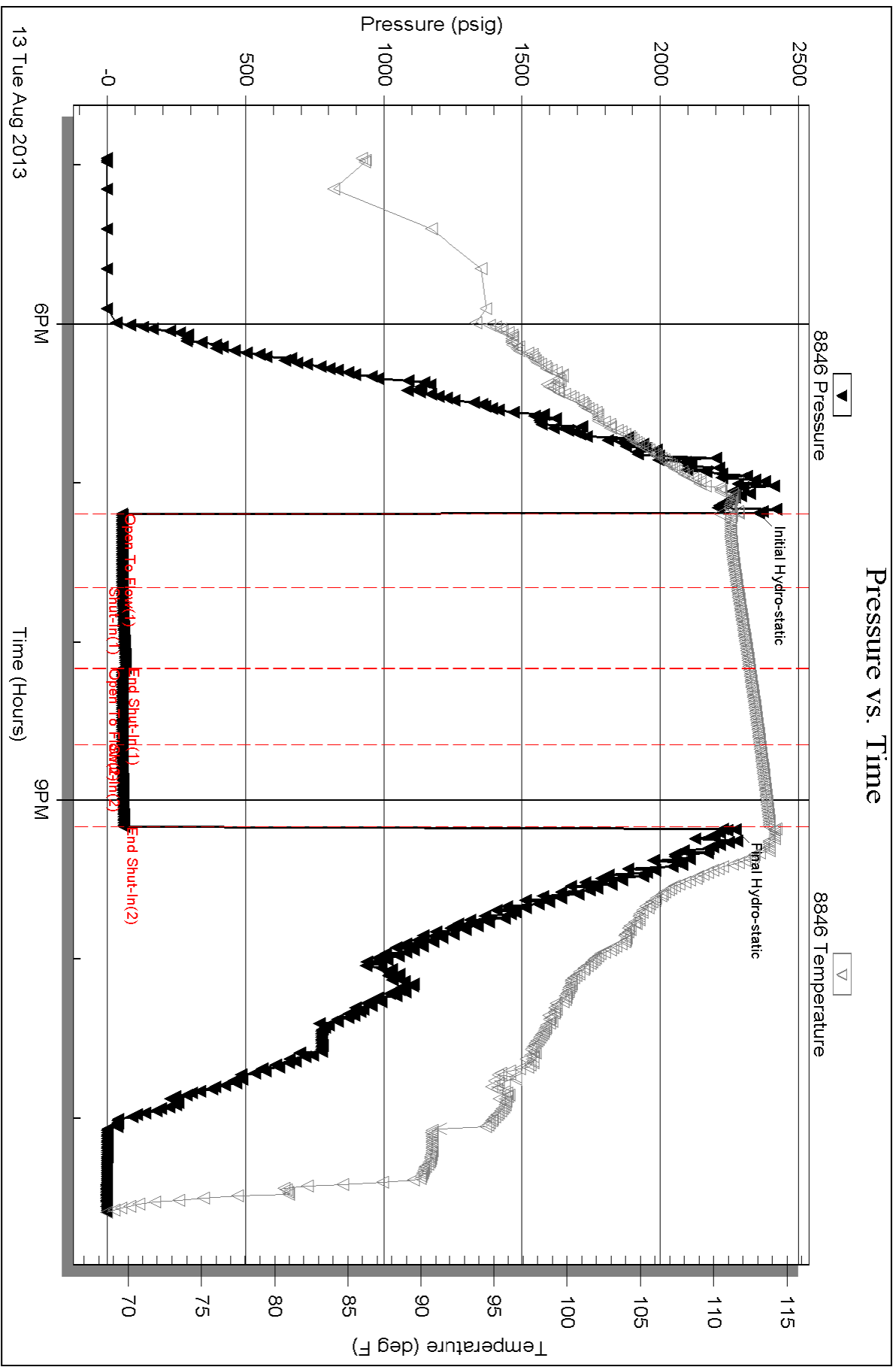
Recovery Comments:

Serial #: 8846

Outside Eagle Creek Corporation

Barnhart #1-17

DST Test Number: 3



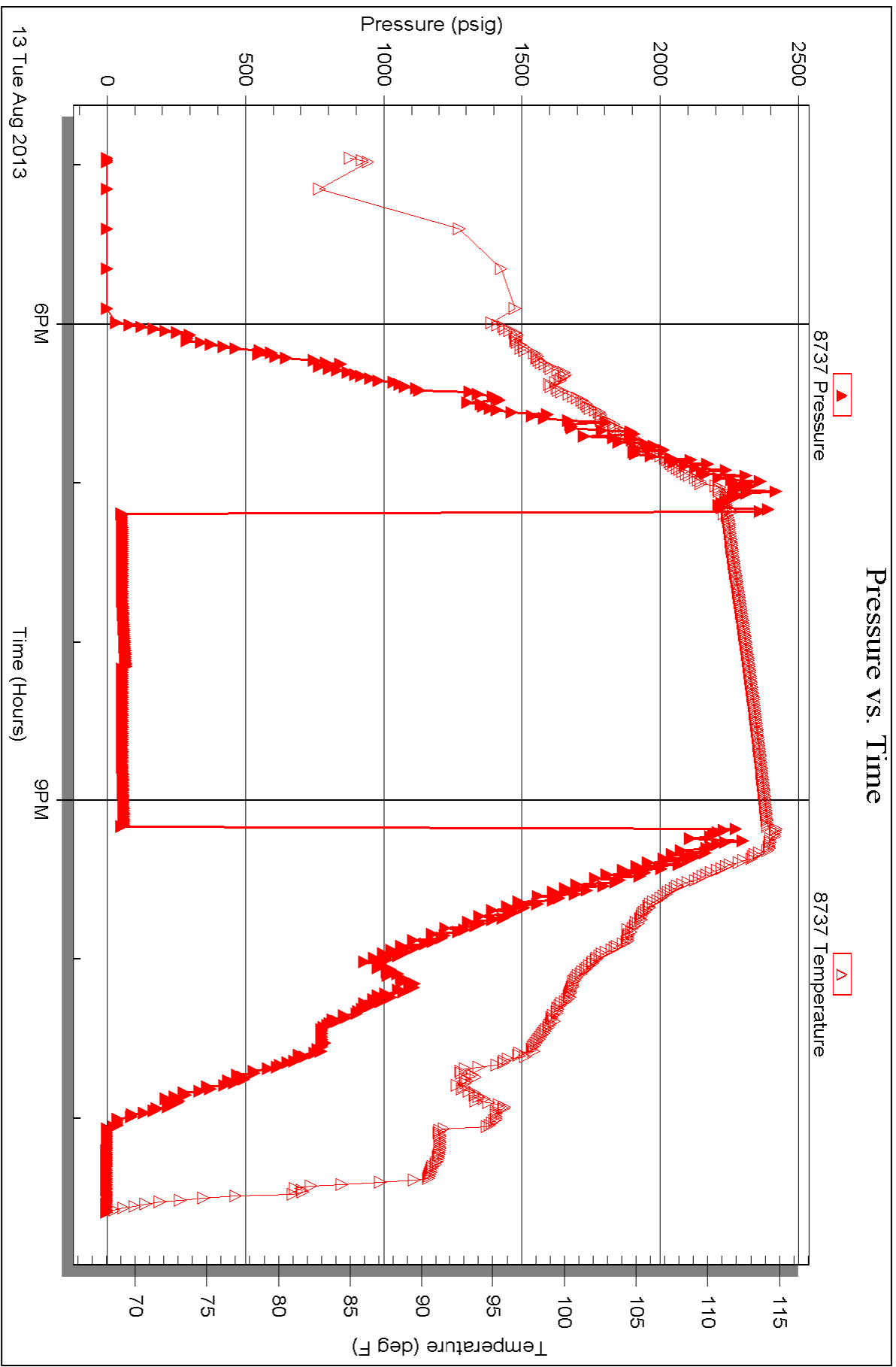
Serial #: 8737

Inside

Eagle Creek Corporation

Barnhart #1-17

DST Test Number: 3





TRILOBITE TESTING INC.

1515 Commerce Parkway • Hays, Kansas 67601

Test Ticket

NO. 53148

Well Name & No. Barnhart Trust #1-17 Test No. 1 Date 8-11-13
 Company Eagle Creek Corporation Elevation 3139 KB 3129 GL
 Address 150 N. Main St. 905 Wichita KS 67202
 Co. Rep / Geo. Gary Gensch Rig Val #4
 Location: Sec. 17 Twp. 17S Rge. 34W Co. SCOTT State KS

Interval Tested 4468-4525 Zone Tested Marmaton A-B
 Anchor Length 57 Drill Pipe Run ~~4443~~ 4443 Mud Wt. 9.3
 Top Packer Depth 4464 Drill Collars Run 30 Vis 51
 Bottom Packer Depth 4468 Wt. Pipe Run 0 WL 10.8
 Total Depth 4525 Chlorides 12000 ppm System LCM 1

Blow Description IF: BOB IN 14 Min.
IS: Return Blow Boilt to 48"
FF: BOB IN 11 Min
FS: Return Blow Boilt to 44"

Rec	Feet of	%gas	%oil	%water	%mud
<u>0</u>	Feet of <u>GIP = 216</u>	<u>100</u>			
<u>154</u>	Feet of <u>gco</u>	<u>40</u>	<u>60</u>		
<u>62</u>	Feet of <u>gcom</u>	<u>10</u>	<u>20</u>	<u>70</u>	
<u>62</u>	Feet of <u>gcom</u>	<u>10</u>	<u>20</u>	<u>80</u>	
<u>62</u>	Feet of <u>gcom</u>	<u>10</u>	<u>20</u>	<u>80</u>	

Rec Total BHT 115 Gravity 28 API RW — @ — °F Chlorides — ppm
 (A) Initial Hydrostatic 2275 Test 12.50.00/ T-On Location 20:15
 (B) First Initial Flow 41 Jars — T-Started 22:30
 (C) First Final Flow 80 Safety Joint — T-Open 01:09
 (D) Initial Shut-In 1236 Circ Sub N/C T-Pulled 04:54
 (E) Second Initial Flow 86 Hourly Standby — T-Out 07:32
 (F) Second Final Flow 129 Mileage 56 RT 86.50/ Comments —
 (G) Final Shut-In 1231 Sampler —
 (H) Final Hydrostatic 2147 Straddle —
 Shale Packer — Ruined Shale Packer —
 Extra Packer — Ruined Packer —
 Extra Recorder — Extra Copies —

Initial Open 30
 Initial Shut-In 60
 Final Flow 45
 Final Shut-In 90
 Sub Total 0
 Total 1336.80
 MP/DST Disc't —

Approved By Gary Gensch Our Representative Mike Roberts
 Sub Total 4136.80

Trilobite Testing Inc. shall not be liable for damaged of any kind of the property or personnel of the one for whom a test is made, or for any loss suffered or sustained, directly or indirectly, through the use of its equipment, or its statements of opinion concerning the results of any test, tools lost or damaged in the hole shall be paid for at cost by the party for whom the test is made.



TRILOBITE TESTING INC.

1515 Commerce Parkway • Hays, Kansas 67601

Test Ticket

NO. 53149

Well Name & No. Barnhart Trust #1-17 Test No. 2 Date 8-12-13
 Company Eagle Creek Corporation Elevation 3139 KB 3129 GL
 Address 150 N. Main St. 905 Wichita KS 67202
 Co. Rep / Geo. Gary Gensch Rig Val 4
 Location: Sec. 17 Twp. 17S Rge. 34W Co. Scott State KS

Interval Tested 4526-4545 Zone Tested Marm C
 Anchor Length 19 Drill Pipe Run 4502 Mud Wt. 9.0
 Top Packer Depth 4522 Drill Collars Run 30 Vis 48
 Bottom Packer Depth 4526 Wt. Pipe Run Ø WL 12.0
 Total Depth 4545 Chlorides 12000 ppm System LCM 2

Blow Description IF: Built to 1/4" Blow + Died in 10 Min.
FS: No Return Blow
FF: No Blow - Flushed tool - 2 Bubbles Died
FS: No Return Blow

Rec	Feet of	%gas	%oil	%water	%mud
<u>10</u>	<u>MUD with Trace of oil</u>			<u>100</u>	
Rec	Feet of	%gas	%oil	%water	%mud
Rec	Feet of	%gas	%oil	%water	%mud
Rec	Feet of	%gas	%oil	%water	%mud
Rec	Feet of	%gas	%oil	%water	%mud

Rec Total 10 BHT 112 Gravity — API RW — @ — ° F Chlorides — ppm

(A) Initial Hydrostatic <u>2263</u>	<input checked="" type="checkbox"/> Test <u>1250.00/-</u>	T-On Location <u>16:25</u>
(B) First Initial Flow <u>15</u>	<input type="checkbox"/> Jars	T-Started <u>16:34</u>
(C) First Final Flow <u>18</u>	<input type="checkbox"/> Safety Joint	T-Open <u>18:25</u>
(D) Initial Shut-In <u>217</u>	<input checked="" type="checkbox"/> Circ Sub <u>NL</u>	T-Pulled <u>20:25</u>
(E) Second Initial Flow <u>19</u>	<input type="checkbox"/> Hourly Standby	T-Out <u>22:18</u>
(F) Second Final Flow <u>24</u>	<input checked="" type="checkbox"/> Mileage <u>56 RT 86.80/-</u>	Comments
(G) Final Shut-In <u>215</u>	<input type="checkbox"/> Sampler	
(H) Final Hydrostatic <u>2189</u>	<input type="checkbox"/> Straddle	<input type="checkbox"/> Ruined Shale Packer

Initial Open 30 Shale Packer Ruined Packer
 Initial Shut-In 30 Extra Packer Extra Copies
 Final Flow 30 Extra Recorder Sub Total 0
 Final Shut-In 30 Day Standby Total 1336.80
 Accessibility MP/DST Disc't
 Sub Total 1336.80/-

Approved By Gary Gensch Our Representative Mark Patto

Trilobite Testing Inc. shall not be liable for damaged or any kind of the property or personnel of the one for whom a test is made, or for any loss suffered or sustained, directly or indirectly, through the use of its equipment, or its statements or opinion concerning the results of any test, tools lost or damaged in the hole shall be paid for at cost by the party for whom the test is made.



TRILOBITE TESTING INC.

1515 Commerce Parkway • Hays, Kansas 67601

Change TIMES

Test Ticket

NO. 52901

Well Name & No. Barnhart Trust #1-17 Test No. 3 Date 8-13-13
 Company Eagle Creek Corporation Elevation 3139 KB 3129 GL
 Address 150 N. Main St. 905 Wichita KS 67202
 Co. Rep / Geo. Gray Gensch Rig Val #4
 Location: Sec. 17 Twp. 17S Rge. 34W Co. SCOTT State KS

Interval Tested 4561-4653 Zone Tested Marm D - Cherokee
 Anchor Length 92' Drill Pipe Run 4535 Mud Wt. 9.1
 Top Packer Depth 4559 Drill Collars Run 30 Vis 54
 Bottom Packer Depth 4561 Wt. Pipe Run 9 WL 10.4
 Total Depth 4653 Chlorides 9500 ppm System LCM 1

Blow Description IF: Weak Surface Blow Died in 5 Min
IS: NO Return Blow
FF: No Blow
FS: No Return Blow

Rec	Feet of	%gas	%oil	%water	%mud
<u>5</u>	<u>Mud with Oil Spots</u>			<u>100</u>	
Rec	Feet of	%gas	%oil	%water	%mud
Rec	Feet of	%gas	%oil	%water	%mud
Rec	Feet of	%gas	%oil	%water	%mud

Rec Total 5 BHT 115 Gravity — API RW — @ — °F Chlorides — ppm

(A) Initial Hydrostatic <u>2355</u>	<input checked="" type="checkbox"/> Test <u>1250.00/-</u>	T-On Location <u>16:30</u>
(B) First Initial Flow <u>52</u>	<input type="checkbox"/> Jars	T-Started <u>16:57</u>
(C) First Final Flow <u>53</u>	<input checked="" type="checkbox"/> Safety Joint <u>NC</u>	T-Open <u>19:10</u>
(D) Initial Shut-In <u>66</u>	<input checked="" type="checkbox"/> Circ Sub <u>NC</u>	T-Pulled <u>21:10</u>
(E) Second Initial Flow <u>53</u>	<input type="checkbox"/> Hourly Standby	T-Out <u>23:36</u>
(F) Second Final Flow <u>53</u>	<input checked="" type="checkbox"/> Mileage <u>Start = 80%</u> 173.60	Comments <u>m. leage x2</u>
(G) Final Shut-In <u>59</u>	<input type="checkbox"/> Sampler	<u>Loaded tools @</u>
(H) Final Hydrostatic <u>2272</u>	<input type="checkbox"/> Straddle	<u>16:30 8-14</u>

Initial Open <u>30</u>	<input type="checkbox"/> Shale Packer	<input type="checkbox"/> Ruined Shale Packer
Initial Shut-In <u>30</u>	<input type="checkbox"/> Extra Packer	<input type="checkbox"/> Ruined Packer
Final Flow <u>30</u>	<input type="checkbox"/> Extra Recorder	Sub Total <u>0</u>
Final Shut-In <u>30</u>	<input type="checkbox"/> Day Standby	Total <u>1423.60</u>
	<input type="checkbox"/> Accessibility <u>1423.60</u>	MP/DST Disc't
	Sub Total <u>7336.80/-</u>	

Approved By Gray Gensch Our Representative Mats Pelt

Trilobite Testing Inc. shall not be liable for damaged of any kind of the property or personnel of the one for whom a test is made, or for any loss suffered or sustained, directly or indirectly, through the use of its equipment, or its statements or opinion concerning the results of any test, tools lost or damaged in the hole shall be paid for at cost by the party for whom the test is made.