



DRILL STEM TEST REPORT

Prepared For: **Charter Energy Inc.**

PO Box 252
Great Bend KS 67530

ATTN: Wyatt Urban

CJ&M A #2

26-20s-16w Pawnee,KS

Start Date: 2013.06.10 @ 20:09:27

End Date: 2013.06.11 @ 02:07:27

Job Ticket #: 52284 DST #: 1

Trilobite Testing, Inc

PO Box 362 Hays, KS 67601

ph: 785-625-4778 fax: 785-625-5620

Printed: 2013.06.13 @ 09:43:13



**TRILOBITE
TESTING, INC.**

DRILL STEM TEST REPORT

Charter Energy Inc.
PO Box 252
Great Bend KS 67530
ATTN: Wyatt Urban

26-20s-16w Pawnee, KS
CJ&M A #2
Job Ticket: 52284 **DST#: 1**
Test Start: 2013.06.10 @ 20:09:27

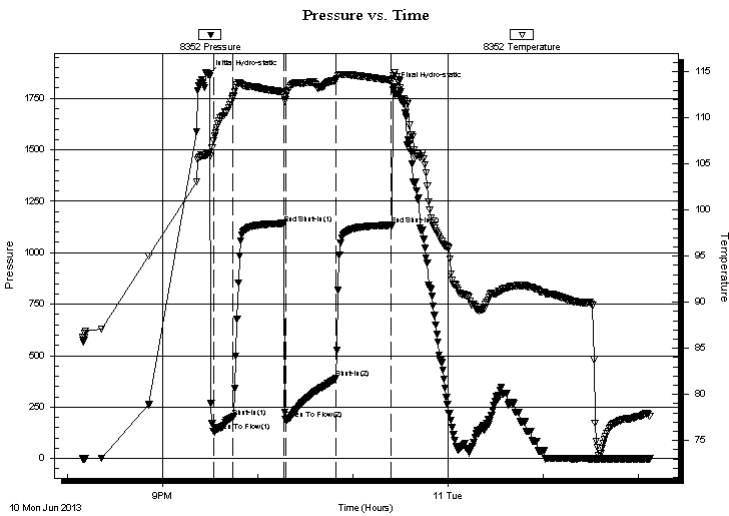
GENERAL INFORMATION:

Formation: **Arbuckle**
Deviated: No Whipstock: ft (KB)
Time Tool Opened: 21:31:57
Time Test Ended: 02:07:27
Interval: **3683.00 ft (KB) To 3775.00 ft (KB) (TVD)**
Total Depth: 3775.00 ft (KB) (TVD)
Hole Diameter: 7.88 inches Hole Condition: Fair
Test Type: Conventional Bottom Hole (Initial)
Tester: Gary Pevoteaux
Unit No: 56
Reference Elevations: 2044.00 ft (KB)
2037.00 ft (CF)
KB to GR/CF: 7.00 ft

Serial #: 8352 Inside
Press @ Run Depth: 390.70 psig @ 3684.00 ft (KB) Capacity: 8000.00 psig
Start Date: 2013.06.10 End Date: 2013.06.11 Last Calib.: 2013.06.11
Start Time: 20:09:32 End Time: 02:07:26 Time On Btm: 2013.06.10 @ 21:28:42
Time Off Btm: 2013.06.10 @ 23:25:42

TEST COMMENT: IF: Strong blow . B.O.B. in 20 secs.
IS: GTS in 4 mins. w hile bleeding off . 2" blow back.
FF: Strong blow . B.O.B. in 20 secs.
FS: Venting gas throughout.

PRESSURE SUMMARY



| Time (Min.) | Pressure (psig) | Temp (deg F) | Annotation |
|-------------|-----------------|--------------|----------------------|
| 0 | 1867.42 | 106.15 | Initial Hydro-static |
| 4 | 131.62 | 107.53 | Open To Flow (1) |
| 16 | 199.91 | 112.34 | Shut-In(1) |
| 48 | 1142.03 | 112.81 | End Shut-In(1) |
| 49 | 188.87 | 111.97 | Open To Flow (2) |
| 81 | 390.70 | 114.14 | Shut-In(2) |
| 116 | 1134.06 | 114.09 | End Shut-In(2) |
| 117 | 1807.44 | 114.52 | Final Hydro-static |

Recovery

| Length (ft) | Description | Volume (bbl) |
|-------------|---------------------------|--------------|
| 100.00 | GOCM 47%g 8%o 45%w | 1.40 |
| 315.00 | GM&WCO 40%g 4%w 15%o 41%w | 4.42 |
| 315.00 | GM&WCO 38%g 8%w 25%o 29%w | 4.42 |
| 275.00 | GM&WCO 32%g 8%w 21%o 39%w | 3.86 |
| | | |
| | | |

Gas Rates

| Choke (inches) | Pressure (psig) | Gas Rate (Mcf/d) |
|----------------|-----------------|------------------|
| | | |



**TRILOBITE
TESTING, INC.**

DRILL STEM TEST REPORT

TOOL DIAGRAM

Charter Energy Inc.
PO Box 252
Great Bend KS 67530
ATTN: Wyatt Urban

26-20s-16w Pawnee,KS
CJ&M A #2
Job Ticket: 52284 **DST#: 1**
Test Start: 2013.06.10 @ 20:09:27

Tool Information

| | | | | |
|---------------------------|--------------------|-----------------------|--------------------------------|------------------------------------|
| Drill Pipe: | Length: 3669.00 ft | Diameter: 3.80 inches | Volume: 51.47 bbl | Tool Weight: 2400.00 lb |
| Heavy Wt. Pipe: | Length: 0.00 ft | Diameter: 0.00 inches | Volume: 0.00 bbl | Weight set on Packer: 24000.00 lb |
| Drill Collar: | Length: 0.00 ft | Diameter: 0.00 inches | Volume: 0.00 bbl | Weight to Pull Loose: 61000.00 lb |
| | | | <u>Total Volume: 51.47 bbl</u> | Tool Chased 0.00 ft |
| Drill Pipe Above KB: | 6.00 ft | | | String Weight: Initial 47000.00 lb |
| Depth to Top Packer: | 3683.00 ft | | | Final 50000.00 lb |
| Depth to Bottom Packer: | ft | | | |
| Interval between Packers: | 92.00 ft | | | |
| Tool Length: | 112.00 ft | | | |
| Number of Packers: | 2 | Diameter: 6.75 inches | | |

Tool Comments:

| Tool Description | Length (ft) | Serial No. | Position | Depth (ft) | Accum. Lengths |
|------------------|-------------|------------|----------|------------|------------------------------------|
| C.O. Sub | 1.00 | | | 3664.00 | |
| Shut in tool | 5.00 | | | 3669.00 | |
| HMV | 5.00 | | | 3674.00 | |
| Packer | 4.00 | | | 3678.00 | 20.00 Bottom Of Top Packer |
| Packer | 5.00 | | | 3683.00 | |
| Stubb | 1.00 | | | 3684.00 | |
| Recorder | 0.00 | 8352 | Inside | 3684.00 | |
| Recorder | 0.00 | 8370 | Outside | 3684.00 | |
| Perforations | 6.00 | | | 3690.00 | |
| Blank Spacing | 63.00 | | | 3753.00 | |
| Perforations | 17.00 | | | 3770.00 | |
| Bullnose | 5.00 | | | 3775.00 | 92.00 Bottom Packers & Anchor |

Total Tool Length: 112.00



**TRILOBITE
TESTING, INC.**

DRILL STEM TEST REPORT

FLUID SUMMARY

Charter Energy Inc.
PO Box 252
Great Bend KS 67530
ATTN: Wyatt Urban

26-20s-16w Pawnee,KS
CJ&M A #2
Job Ticket: 52284 **DST#: 1**
Test Start: 2013.06.10 @ 20:09:27

Mud and Cushion Information

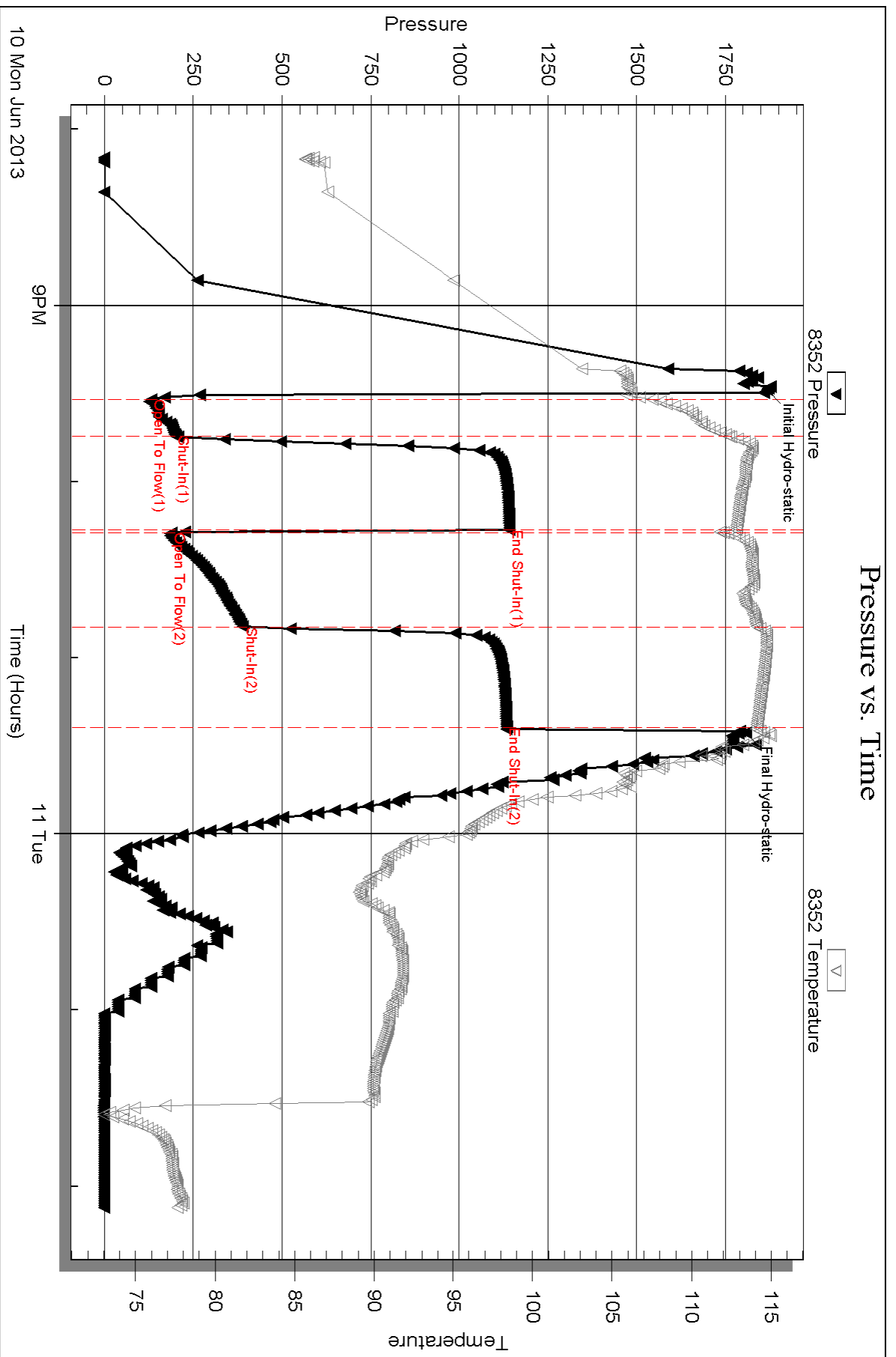
| | | | |
|----------------------------------|----------------------------|-----------------|-----------|
| Mud Type: Gel Chem | Cushion Type: | Oil API: | deg API |
| Mud Weight: 9.00 lb/gal | Cushion Length: ft | Water Salinity: | 39000 ppm |
| Viscosity: 80.00 sec/qt | Cushion Volume: bbl | | |
| Water Loss: 9.17 in ³ | Gas Cushion Type: | | |
| Resistivity: 0.00 ohm.m | Gas Cushion Pressure: psig | | |
| Salinity: 7000.00 ppm | | | |
| Filter Cake: 0.20 inches | | | |

Recovery Information

Recovery Table

| Length ft | Description | Volume bbl |
|--------------|---------------------------|---------------|
| 100.00 | GOCM 47%g 8%o 45%m | 1.403 |
| 315.00 | GM&WCO 40%g 4%m 15%w 41%o | 4.419 |
| 315.00 | GM&WCO 38%g 8%m 25%w 29%o | 4.419 |
| 275.00 | GM&WCO 32%g 8%m 21%w 39%o | 3.858 |

Total Length: 1005.00 ft Total Volume: 14.099 bbl
 Num Fluid Samples: 0 Num Gas Bombs: 0 Serial #: none
 Laboratory Name: Laboratory Location:
 Recovery Comments: Rw .17ohms @ 78deg

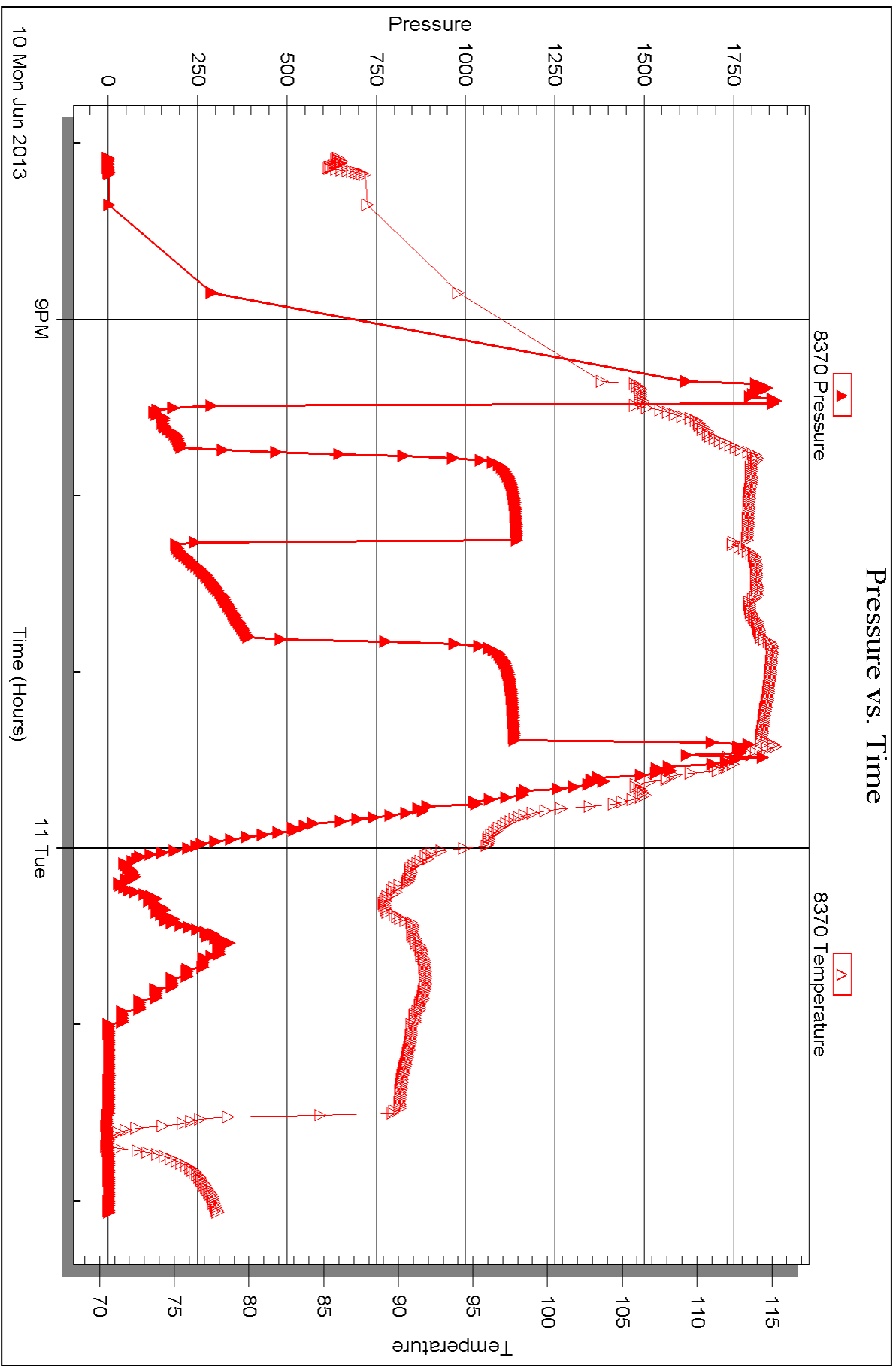


Serial #: 8370

Outside Charter Energy Inc.

CU&MA#2

DST Test Number: 1





DRILL STEM TEST REPORT

Prepared For: **Charter Energy Inc.**

PO Box 252
Great Bend KS 67530

ATTN: Wyatt Urban

CJ&M A #2

26-20s-16w Pawnee,KS

Start Date: 2013.06.11 @ 08:29:18

End Date: 2013.06.11 @ 14:20:33

Job Ticket #: 52285 DST #: 2

Trilobite Testing, Inc

PO Box 362 Hays, KS 67601

ph: 785-625-4778 fax: 785-625-5620

Printed: 2013.06.13 @ 09:41:56



**TRILOBITE
TESTING, INC.**

DRILL STEM TEST REPORT

TOOL DIAGRAM

Charter Energy Inc.
PO Box 252
Great Bend KS 67530
ATTN: Wyatt Urban

26-20s-16w Pawnee,KS
CJ&M A #2
Job Ticket: 52285 **DST#: 2**
Test Start: 2013.06.11 @ 08:29:18

Tool Information

| | | | | | |
|---------------------------|--------------------|-----------------------|--------------------------------|------------------------|-------------|
| Drill Pipe: | Length: 3765.00 ft | Diameter: 3.80 inches | Volume: 52.81 bbl | Tool Weight: | 2400.00 lb |
| Heavy Wt. Pipe: | Length: 0.00 ft | Diameter: 0.00 inches | Volume: 0.00 bbl | Weight set on Packer: | 24000.00 lb |
| Drill Collar: | Length: 0.00 ft | Diameter: 0.00 inches | Volume: 0.00 bbl | Weight to Pull Loose: | 64000.00 lb |
| | | | <u>Total Volume: 52.81 bbl</u> | Tool Chased | 0.00 ft |
| Drill Pipe Above KB: | 7.00 ft | | | String Weight: Initial | 46000.00 lb |
| Depth to Top Packer: | 3778.00 ft | | | Final | 58000.00 lb |
| Depth to Bottom Packer: | ft | | | | |
| Interval between Packers: | 12.00 ft | | | | |
| Tool Length: | 32.00 ft | | | | |
| Number of Packers: | 2 | Diameter: 6.75 inches | | | |

Tool Comments:

| Tool Description | Length (ft) | Serial No. | Position | Depth (ft) | Accum. Lengths |
|---------------------------|--------------|------------|----------|------------|------------------------------------|
| C.O. Sub | 1.00 | | | 3759.00 | |
| Shut in tool | 5.00 | | | 3764.00 | |
| HMV | 5.00 | | | 3769.00 | |
| Packer | 4.00 | | | 3773.00 | 20.00 Bottom Of Top Packer |
| Packer | 5.00 | | | 3778.00 | |
| Stubb | 1.00 | | | 3779.00 | |
| Recorder | 0.00 | 8352 | Inside | 3779.00 | |
| Recorder | 0.00 | 8370 | Outside | 3779.00 | |
| Perforations | 6.00 | | | 3785.00 | |
| Bullnose | 5.00 | | | 3790.00 | 12.00 Bottom Packers & Anchor |
| Total Tool Length: | 32.00 | | | | |



**TRILOBITE
TESTING, INC.**

DRILL STEM TEST REPORT

FLUID SUMMARY

Charter Energy Inc.
PO Box 252
Great Bend KS 67530
ATTN: Wyatt Urban

26-20s-16w Pawnee,KS
CJ&M A #2
Job Ticket: 52285 **DST#: 2**
Test Start: 2013.06.11 @ 08:29:18

Mud and Cushion Information

| | | | |
|----------------------------------|----------------------------|-----------------|-----------|
| Mud Type: Gel Chem | Cushion Type: | Oil API: | deg API |
| Mud Weight: 9.00 lb/gal | Cushion Length: ft | Water Salinity: | 40500 ppm |
| Viscosity: 64.00 sec/qt | Cushion Volume: bbl | | |
| Water Loss: 9.18 in ³ | Gas Cushion Type: | | |
| Resistivity: 0.00 ohm.m | Gas Cushion Pressure: psig | | |
| Salinity: 8000.00 ppm | | | |
| Filter Cake: 0.20 inches | | | |

Recovery Information

Recovery Table

| Length ft | Description | Volume bbl |
|--------------|--------------------------|---------------|
| 0.00 | 580 ft.of GIP | 0.000 |
| 140.00 | GOCMW 9%g 12%o 25%m 54%w | 1.964 |
| 250.00 | GOCW 4%g 3%o 93%w | 3.507 |
| 2120.00 | SW /w oil specs | 29.738 |

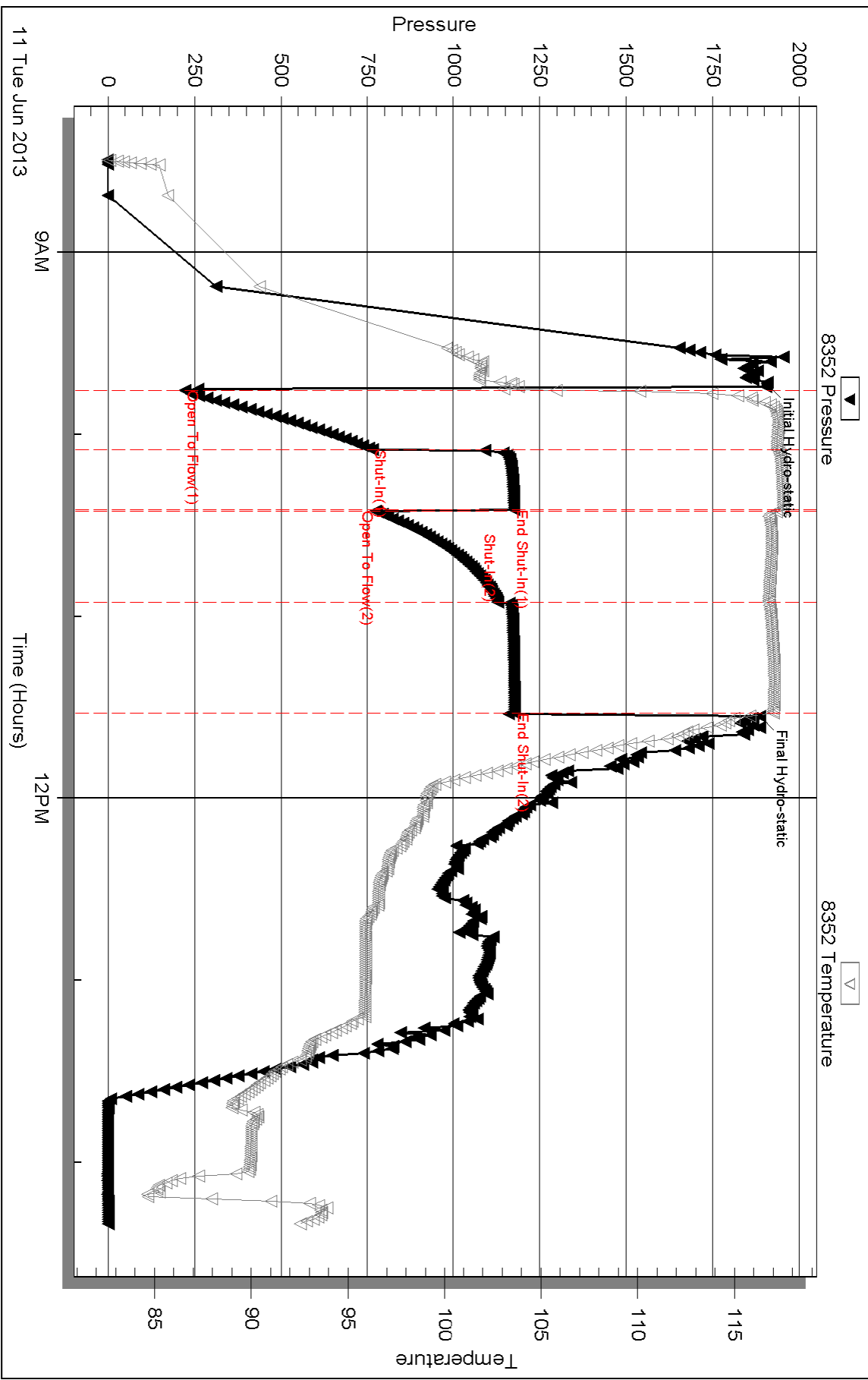
Total Length: 2510.00 ft Total Volume: 35.209 bbl

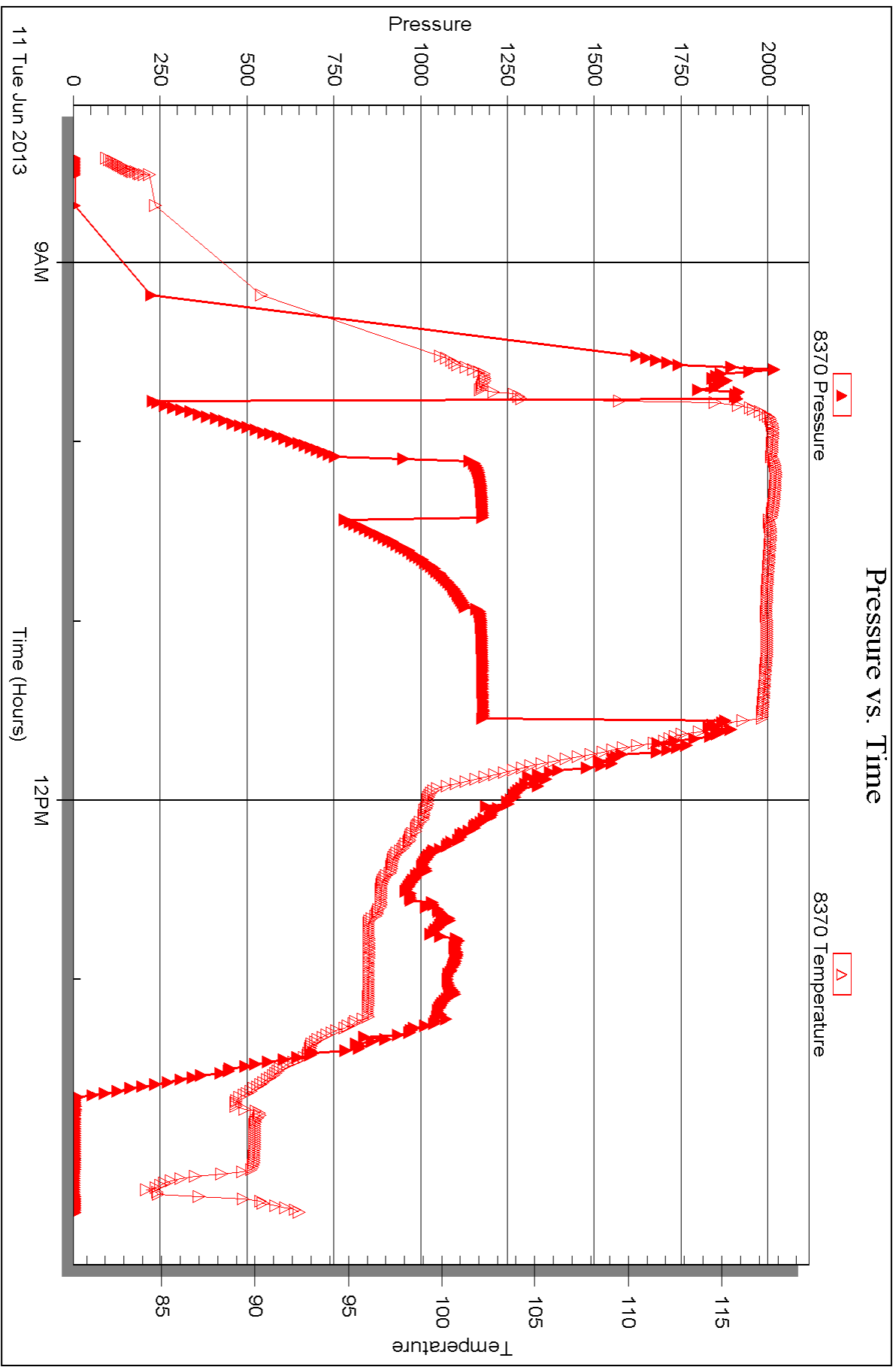
Num Fluid Samples: 0 Num Gas Bombs: 0 Serial #: none

Laboratory Name: Laboratory Location:

Recovery Comments: Rw .18ohms @95deg

Pressure vs. Time







DRILL STEM TEST REPORT

Prepared For: **Charter Energy Inc.**

PO Box 252
Great Bend KS 67530

ATTN: Wyatt Urban

CJ&M A #2

26-20s-16w Pawnee,KS

Start Date: 2013.06.11 @ 20:38:40

End Date: 2013.06.12 @ 01:35:55

Job Ticket #: 52286 DST #: 3

Trilobite Testing, Inc

PO Box 362 Hays, KS 67601

ph: 785-625-4778 fax: 785-625-5620

Printed: 2013.06.13 @ 09:40:28



**TRILOBITE
TESTING, INC.**

DRILL STEM TEST REPORT

TOOL DIAGRAM

Charter Energy Inc.

26-20s-16w Pawnee,KS

PO Box 252
Great Bend KS 67530

CJ&M A #2

Job Ticket: 52286

DST#: 3

ATTN: Wyatt Urban

Test Start: 2013.06.11 @ 20:38:40

Tool Information

| | | | | | |
|---------------------------|--------------------|-----------------------|--------------------------------|------------------------|-------------|
| Drill Pipe: | Length: 3795.00 ft | Diameter: 3.80 inches | Volume: 53.23 bbl | Tool Weight: | 2400.00 lb |
| Heavy Wt. Pipe: | Length: 0.00 ft | Diameter: 0.00 inches | Volume: 0.00 bbl | Weight set on Packer: | 24000.00 lb |
| Drill Collar: | Length: 0.00 ft | Diameter: 0.00 inches | Volume: 0.00 bbl | Weight to Pull Loose: | 63000.00 lb |
| | | | <u>Total Volume: 53.23 bbl</u> | Tool Chased | 0.00 ft |
| Drill Pipe Above KB: | 21.00 ft | | | String Weight: Initial | 46000.00 lb |
| Depth to Top Packer: | 3794.00 ft | | | Final | 51000.00 lb |
| Depth to Bottom Packer: | ft | | | | |
| Interval between Packers: | 12.00 ft | | | | |
| Tool Length: | 32.00 ft | | | | |
| Number of Packers: | 2 | Diameter: 6.75 inches | | | |
| Tool Comments: | | | | | |

| Tool Description | Length (ft) | Serial No. | Position | Depth (ft) | Accum. Lengths |
|------------------|-------------|------------|----------|------------|----------------|
|------------------|-------------|------------|----------|------------|----------------|

| | | | | | |
|---------------------------|--------------|------|---------|---------|-------------------------------|
| C.O. Sub | 1.00 | | | 3775.00 | |
| Shut in tool | 5.00 | | | 3780.00 | |
| HMV | 5.00 | | | 3785.00 | |
| Packer | 4.00 | | | 3789.00 | 20.00 Bottom Of Top Packer |
| Packer | 5.00 | | | 3794.00 | |
| Stubb | 1.00 | | | 3795.00 | |
| Recorder | 0.00 | 8352 | Inside | 3795.00 | |
| Recorder | 0.00 | 8370 | Outside | 3795.00 | |
| Perforations | 6.00 | | | 3801.00 | |
| Bullnose | 5.00 | | | 3806.00 | 12.00 Bottom Packers & Anchor |
| Total Tool Length: | 32.00 | | | | |



**TRILOBITE
TESTING, INC.**

DRILL STEM TEST REPORT

FLUID SUMMARY

Charter Energy Inc.
PO Box 252
Great Bend KS 67530
ATTN: Wyatt Urban

26-20s-16w Pawnee,KS
CJ&M A #2
Job Ticket: 52286 **DST#: 3**
Test Start: 2013.06.11 @ 20:38:40

Mud and Cushion Information

| | | | |
|----------------------------------|----------------------------|-----------------|-----------|
| Mud Type: Gel Chem | Cushion Type: | Oil API: | deg API |
| Mud Weight: 9.00 lb/gal | Cushion Length: ft | Water Salinity: | 43000 ppm |
| Viscosity: 64.00 sec/qt | Cushion Volume: bbl | | |
| Water Loss: 9.18 in ³ | Gas Cushion Type: | | |
| Resistivity: 0.00 ohm.m | Gas Cushion Pressure: psig | | |
| Salinity: 8000.00 ppm | | | |
| Filter Cake: 0.20 inches | | | |

Recovery Information

Recovery Table

| Length ft | Description | Volume bbl |
|--------------|-------------------------|---------------|
| 0.00 | 90 ft.of GIP | 0.000 |
| 240.00 | GCMW/w o specs 6%g 94%w | 3.367 |
| 2010.00 | GCW 3%g 97%w | 28.195 |

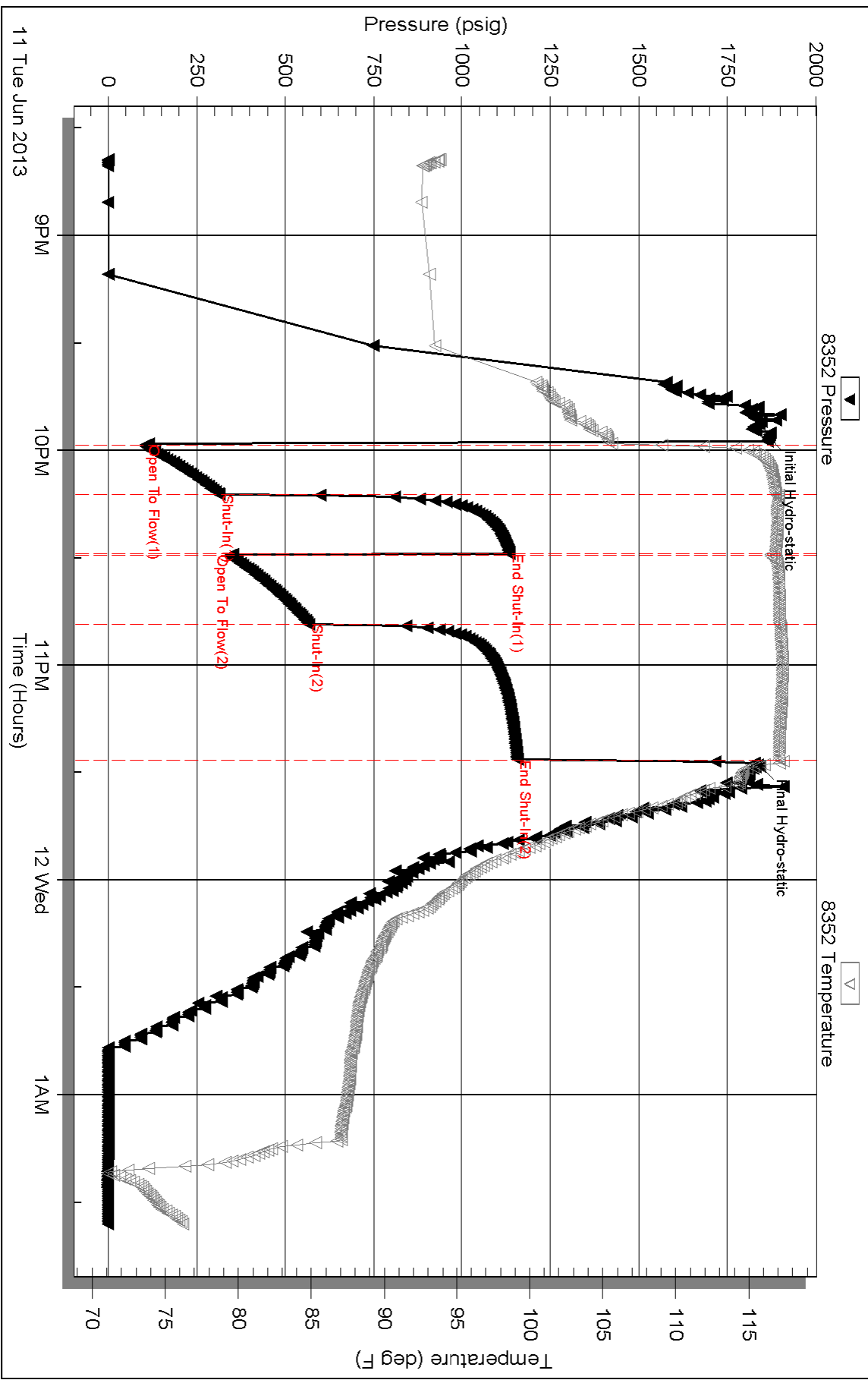
Total Length: 2250.00 ft Total Volume: 31.562 bbl

Num Fluid Samples: 0 Num Gas Bombs: 0 Serial #: none

Laboratory Name: Laboratory Location:

Recovery Comments: Rw .14ohms @85deg

Pressure vs. Time

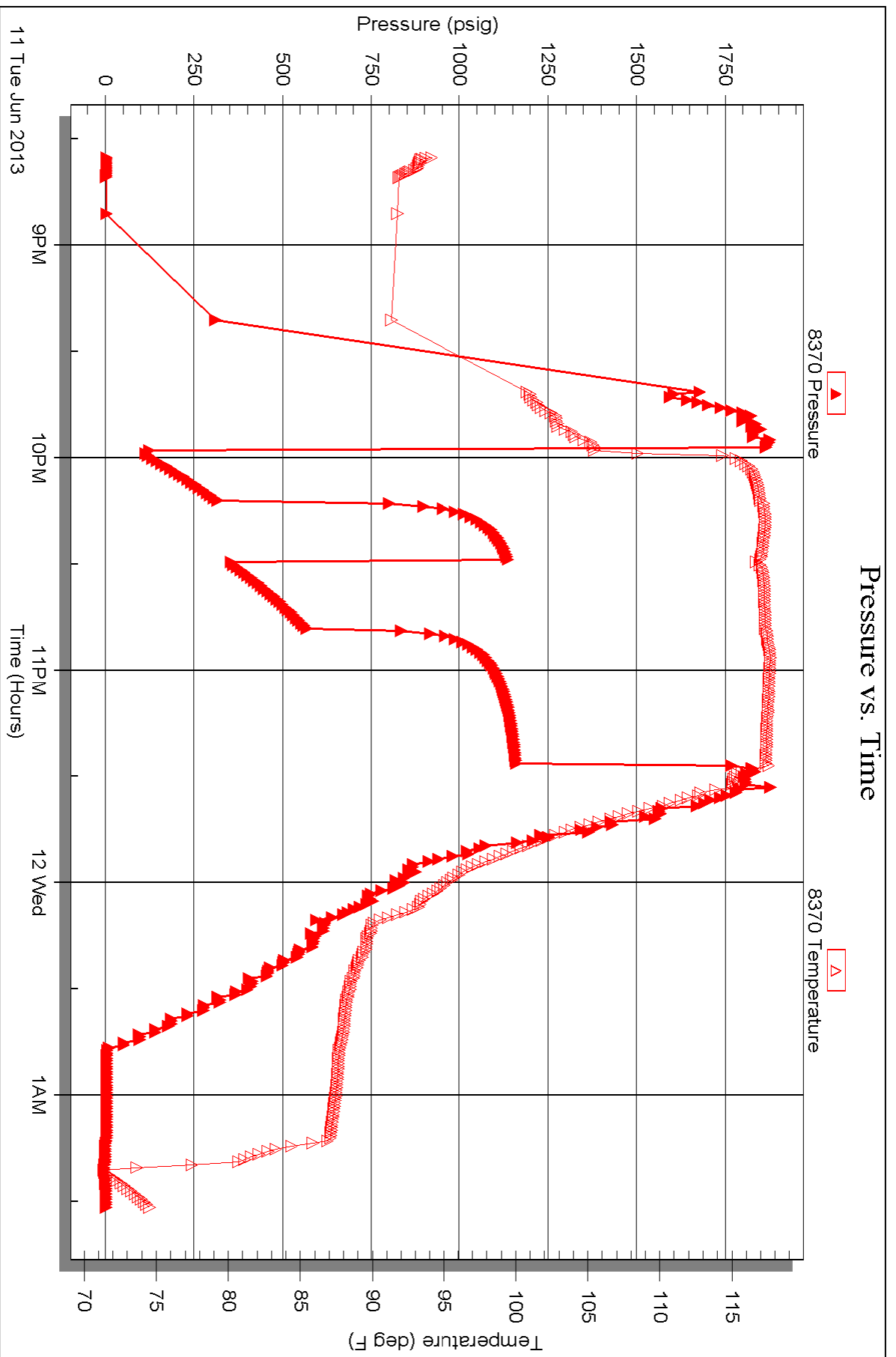


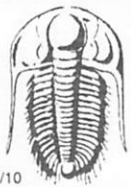
Serial #: 8370

Outside Charter Energy Inc.

CU&MA#2

DST Test Number: 3





TRILOBITE TESTING INC.

1515 Commerce Parkway • Hays, Kansas 67601

Test Ticket

NO. 52284

Well Name & No. CJEM A#2 Test No. 1 Date 6-10-13
 Company CHARTER ENERGY INC. Elevation 2044 KB 2037 GL
 Address PO. Box 252, GREAT BEND KS. 67530
 Co. Rep / Geo. WYATT URBAN Rig ROYAL DRUG #2
 Location: Sec. 26 Twp. 20S Rge. 16W Co. PAWNEE State Ks.

Interval Tested 3683 ~ 3775' Zone Tested ARBUCKLE
 Anchor Length 92' Drill Pipe Run 3669 Mud Wt. 9.0
 Top Packer Depth 3678' Drill Collars Run 0 Vis 80
 Bottom Packer Depth 3683' Wt. Pipe Run 0 WL 9.2
 Total Depth 3775' Chlorides 7000 ppm System LCM 0

Blow Description IF: Strong blow. B.O.B. in 20 secs. ISI. GTS in 4 mins while bleeding off. 2" blow back.
FF: Strong blow. B.O.B. in 20 secs. FSI: Venting gas throughout

| Rec | Feet of | %gas | %oil | %water | %mud |
|-----|---------|------|------|--------|------|
| 100 | GOEM | 47 | 48 | 45 | |
| 315 | GM EWCO | 40 | 41 | 15 | 4 |
| 315 | GM EWCO | 38 | 29 | 25 | 8 |
| 225 | GM EWCO | 32 | 39 | 21 | 8 |

Rec Total 1005 BHT 1140 Gravity N/A API RW .17 @ 78 °F Chlorides 39,000 ppm

(A) Initial Hydrostatic 1867 Test 1150 T-On Location 1914
 (B) First Initial Flow 132 Jars _____ T-Started 2009
 (C) First Final Flow 200 Safety Joint _____ T-Open 2131
 (D) Initial Shut-In 1142 Circ Sub _____ T-Pulled 23 21
 (E) Second Initial Flow 189 Hourly Standby _____ T-Out 0207
 (F) Second Final Flow 391 Mileage 130 201.50 Comments _____
 (G) Final Shut-In 1134 Sampler _____
 (H) Final Hydrostatic 1807 Straddle _____
 Shale Packer _____
 Ruined Shale Packer _____
 Ruined Packer _____
 Extra Packer _____
 Extra Copies _____

Initial Open 15
 Initial Shut-In 30
 Final Flow 30
 Final Shut-In 30
 Extra Recorder _____
 Day Standby _____
 Accessibility _____
 Sub Total 1351.50
 Sub Total 1351.50
 Total 1351.50
 MP/DST Disc't _____

Approved By [Signature] Our Representative [Signature]

Trilobite Testing Inc. shall not be liable for damaged of any kind of the property or personnel of the one for whom a test is made, or for any loss suffered or sustained, directly or indirectly, through the use of its equipment, or its statements or opinion concerning the results of any test, tools lost or damaged in the hole shall be paid for at cost by the party for whom the test is made.



TRILOBITE TESTING INC.

1515 Commerce Parkway • Hays, Kansas 67601

Test Ticket

NO. 52285

Well Name & No. CJEM A#2 Test No. 2 Date 6-11-13
 Company CHARTER ENERGY INC. Elevation 2044 KB 2037 GL
 Address P.O. Box 252, GREAT BEND, Ks. 67530
 Co. Rep / Geo. WYATT URBAN Rig ROYAL DRLO #2
 Location: Sec. 26 Twp. 20S Rge. 16W Co. PAWNEE State Ks.

Interval Tested 3778-3790' Zone Tested ARBUCKLE
 Anchor Length 12' Drill Pipe Run 3765' Mud Wt. 8.9
 Top Packer Depth 3773' Drill Collars Run 0 Vis 64
 Bottom Packer Depth 3778' Wt. Pipe Run 0 WL 9.2cc
 Total Depth 3790' Chlorides 8,000 ppm System LCM 0

Blow Description IF: Strong blow. B.O.B. in 35 sec. FSI: Weak blow. 1-3 1/2"

FF: Strong blow. B.O.B. in 40 sec. FSI: Weak to fair blow. 1-2 1/2"

| Rec | Feet of | %gas | %oil | %water | %mud |
|-------------|----------------------|----------|-----------|-----------|-----------|
| <u>580</u> | <u>GIP</u> | <u>9</u> | <u>12</u> | <u>54</u> | <u>25</u> |
| <u>140</u> | <u>GOMMw</u> | <u>4</u> | <u>3</u> | <u>93</u> | |
| <u>250</u> | <u>GO CW</u> | | | | |
| <u>2120</u> | <u>SW/w 0 speeds</u> | | | | |

Rec Total 2510 BHT 117° Gravity N/A API RW .18 @ 95 °F Chlorides 40,500 ppm

(A) Initial Hydrostatic 1907 Test 1150 T-On Location 0814
 (B) First Initial Flow 222 Jars _____ T-Started 0829
 (C) First Final Flow 764 Safety Joint _____ T-Open 0945
 (D) Initial Shut-In 1176 Circ Sub 50 T-Pulled 1128
 (E) Second Initial Flow 774 Hourly Standby _____ T-Out 1420
 (F) Second Final Flow 1130 Mileage (130) 201.50 Comments _____
 (G) Final Shut-In 1177 Sampler _____
 (H) Final Hydrostatic 1888 Straddle _____ Ruined Shale Packer _____
 Shale Packer _____ Ruined Packer _____
 Extra Packer _____ Extra Copies _____
 Extra Recorder _____ Sub Total 0
 Day Standby _____ Total 1401.50
 Accessibility _____ MP/DST Disc't _____

Initial Open 20
 Initial Shut-In 20
 Final Flow 30
 Final Shut-In 30
 Sub Total 1401.50

Approved By [Signature] Our Representative [Signature]

Trilobite Testing Inc. shall not be liable for damaged or any kind of the property or personnel of the one for whom a test is made, or for any loss suffered or sustained, directly or indirectly, through the use of its equipment, or its statements or opinion concerning the results of any test, tools lost or damaged in the hole shall be paid for at cost by the party for whom the test is made.



TRILOBITE TESTING INC.

1515 Commerce Parkway • Hays, Kansas 67601

Test Ticket

NO. 52286

Well Name & No. CJEM A#2 Test No. 3 Date 6-11-13
 Company CHARTER ENERGY INC. Elevation 2044 KB 2037 GL
 Address P.O. Box 252, GREAT BEND KS. 67530
 Co. Rep / Geo. WYATT URBAN Rig ROYAL DRUG #2
 Location: Sec. 26 Twp. 20^S Rge. 16 W Co. PAWNEE State KS.

Interval Tested 3794 - 3806' Zone Tested ARBUCKLE
 Anchor Length 12' Drill Pipe Run 3795' Mud Wt. 9.2
 Top Packer Depth 3789' Drill Collars Run 0 Vis 64
 Bottom Packer Depth 3794' Wt. Pipe Run 0 WL 9.2 cc
 Total Depth 3806' Chlorides 4,000 ppm System LCM 0

Blow Description FF: Strong blow. B.O.B. in 65 sec. - FSI: Weak below. 1-3 1/4"
FF: Strong blow. B.O.B. in 65-70 sec. - FSI: Weak below. 1-4"

| Rec | Feet of | %gas | %oil | %water | %mud |
|-------------|------------------------|----------|-----------|-----------|------|
| <u>90</u> | <u>GIP</u> | | | | |
| <u>240</u> | <u>GCMW/w/0 specs.</u> | <u>6</u> | <u>84</u> | <u>10</u> | |
| <u>1010</u> | <u>GCW</u> | <u>3</u> | <u>97</u> | | |
| | | | | | |
| | | | | | |

Rec Total 1250 BHT 117° Gravity N/A API RW -14 @ 85 ° F Chlorides 43,000 ppm

(A) Initial Hydrostatic 1866 Test 1150 T-On Location 2019
 (B) First Initial Flow 106 Jars _____ T-Started 2038
 (C) First Final Flow 314 Safety Joint _____ T-Open 2158
 (D) Initial Shut-In 1135 Circ Sub _____ T-Pulled 2323
 (E) Second Initial Flow 345 Hourly Standby _____ T-Out 0135
 (F) Second Final Flow 567 Mileage 130 403 Comments _____
 (G) Final Shut-In 1157 Sampler _____ loaded tools 6/12 10:15
 (H) Final Hydrostatic 1843 Straddle _____ Ruined Shale Packer _____
 Shale Packer _____ Ruined Packer _____

Initial Open 15 Extra Packer _____ Extra Copies _____
 Initial Shut-In 15 Extra Recorder _____ Sub Total 0
 Final Flow 20 Day Standby _____ Total 1553
 Final Shut-In 30 Accessibility _____ MP/DST Disc't _____
 Sub Total 1553

Approved By Wyatt Urban Our Representative Cory Poterans

Trilobite Testing Inc. shall not be liable for damaged of any kind of the property or personnel of the one for whom a test is made, or for any loss suffered or sustained, directly or indirectly, through the use of its equipment, or its statements or opinion concerning the results of any test, tools lost or damaged in the hole shall be paid for at cost by the party for whom the test is made.